

RUBBER DAM



Professor Cristina Masino
Professor Anty Lam

OBJECTIVES

- IDENTIFY THE INDICATIONS AND CONTRAINDICATIONS OF RUBBER DAM ISOLATION
- RECOGNIZE THE ARMAMENTARIUM USED TO PLACE AND REMOVE A RUBBER DAM
- EXPLAIN THE PROPER STEPS TO PLACE AND REMOVE A RUBBER DAM

RATIONALE

THE PRIMARY PURPOSE OF THE RUBBER DAM IS TO IMPROVE THE QUALITY OF DENTAL TREATMENT.



THE EFFECTIVENESS OF THE RUBBER DAM IS A RESULT OF FIVE ATTRIBUTES:

- MOISTURE CONTROL
- ACCESSIBILITY AND VISIBILITY
- PATIENT AND OPERATOR PROTECTION
- PATIENT MANAGEMENT
- SAFETY



DISADVANTAGES

- TIME
CONSUMING
- PATIENT
OBJECTION

CONTRAINDICATIONS

- ALLERGY TO LATEX (YOU SHOULD BE USING NITRILE)
- ACTIVE HERPETIC LESIONS
- RESPIRATORY DIFFICULTIES
- PSYCHIATRIC/ANXIETY/ CLAUSTROPHIA
- USE JUDGEMENT ON PARTIALLY ERUPTED OR MALALIGNED TEETH

ARMAMENTARIUM



ARMAMENTARIUM

RUBBER DAM MATERIAL



ARMAMENTARIUM

- RUBBER DAM MATERIAL CHARACTERISTICS
 - SIZE (IN INCHES)
 - THICKNESS
 - COLOR
 - LATEX VS NON-LATEX





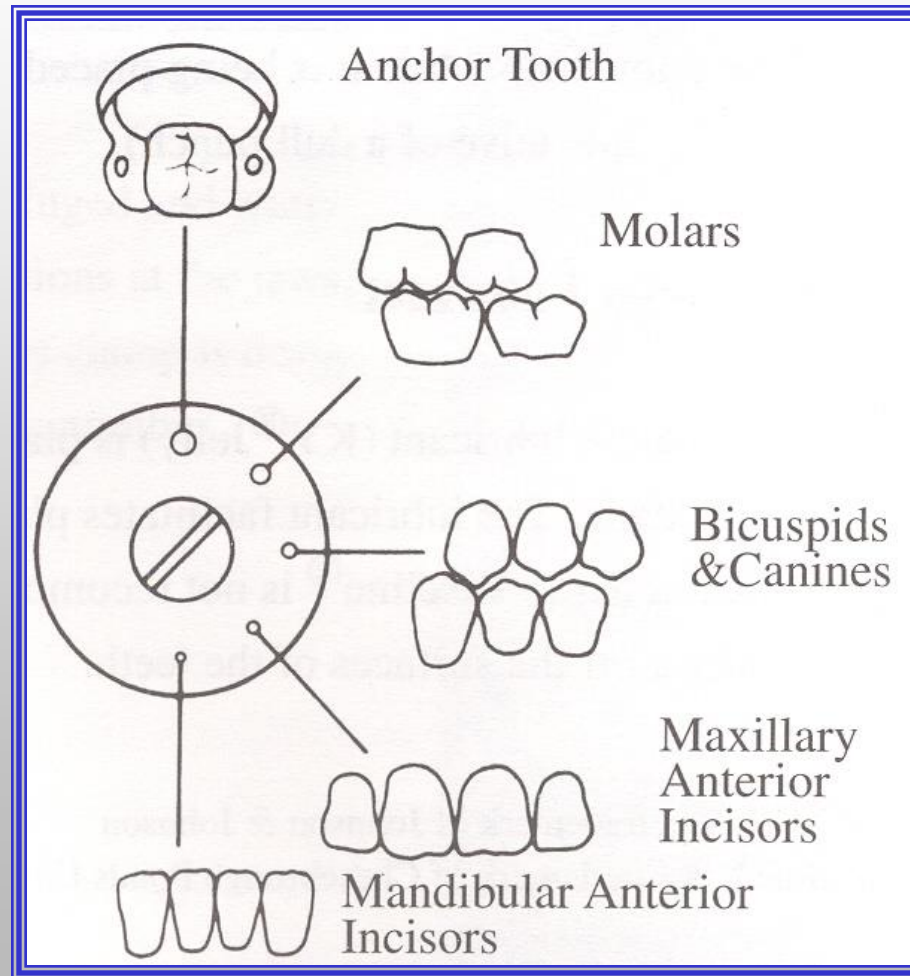
ARMAMENTARIUM

RUBBER DAM PUNCH

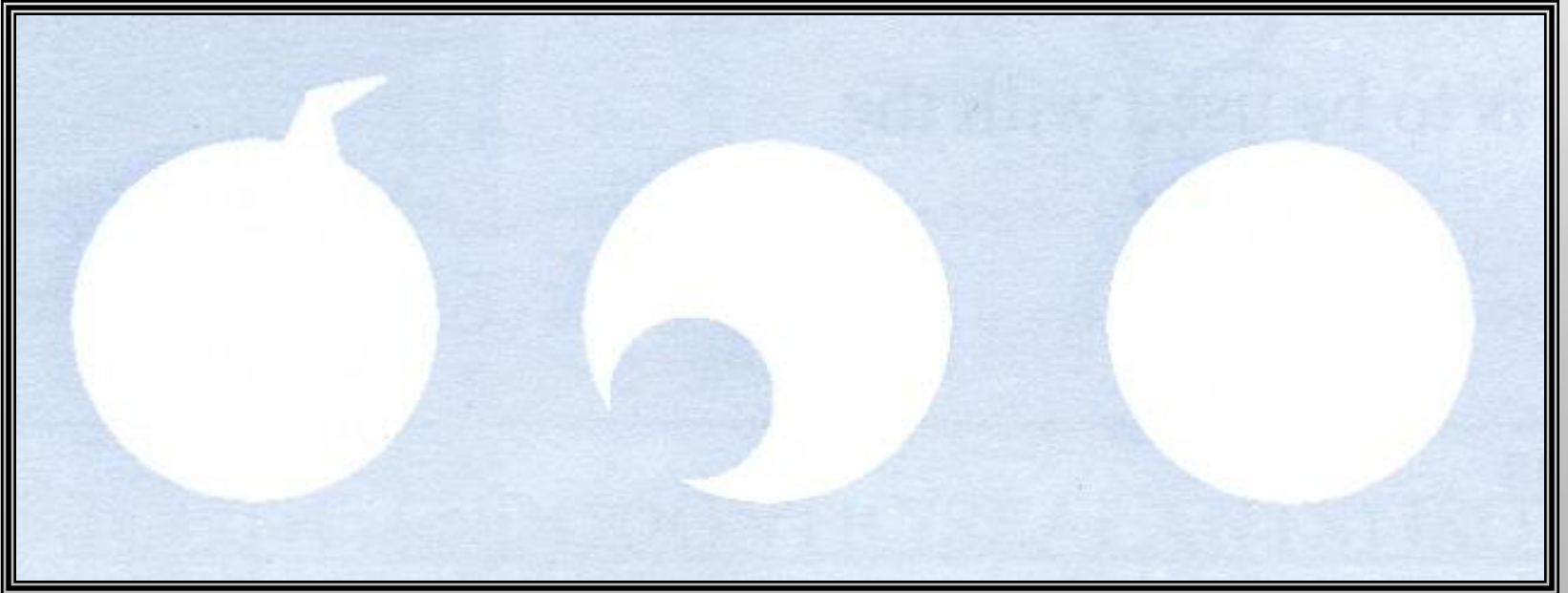
- USED TO PUNCH HOLES IN THE RUBBER DAM MATERIAL



RUBBER DAM PUNCH SIZES



RUBBER DAM PUNCH



ARMAMENTARIUM

RUBBER DAM FORCEPS

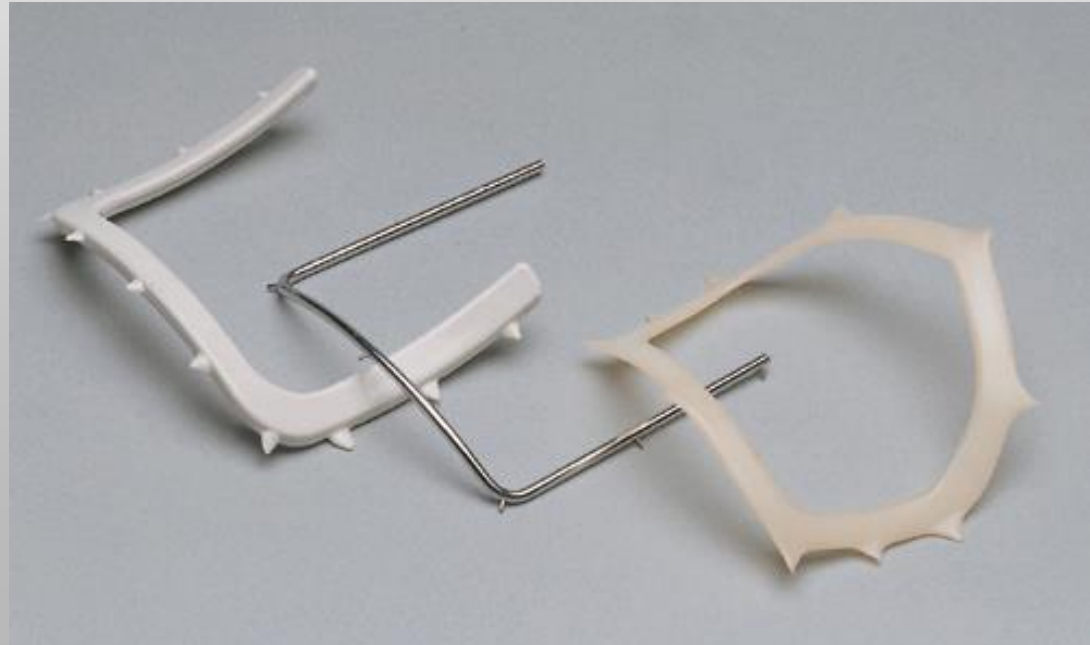
- USED TO PLACE THE RUBBER DAM CLAMP ON THE ANCHOR TOOTH



ARMAMENTARIUM

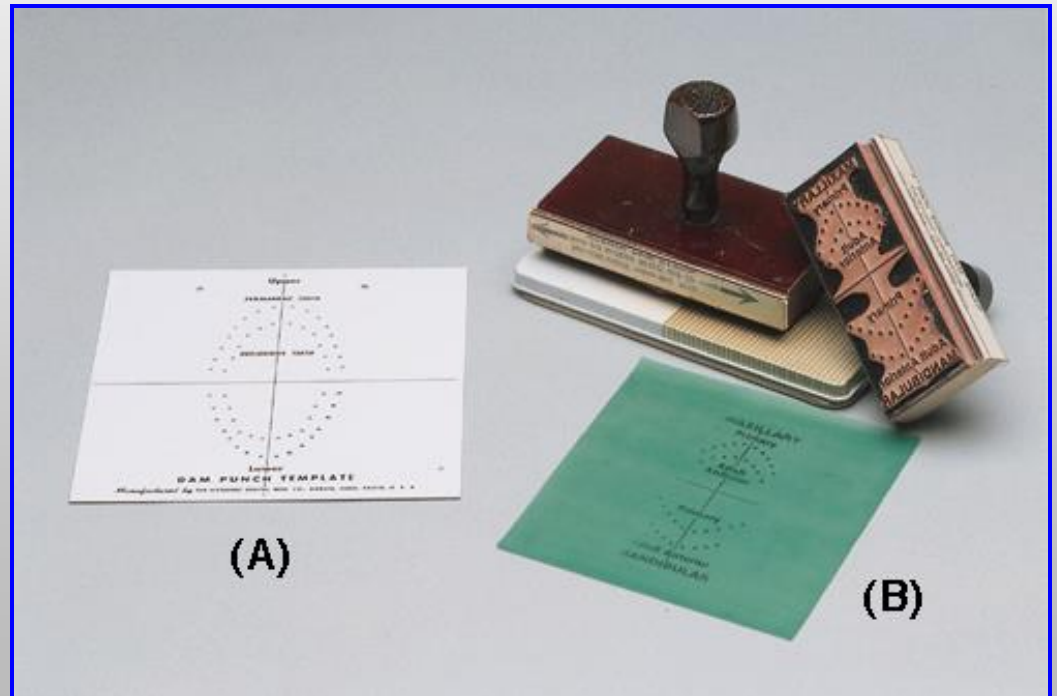
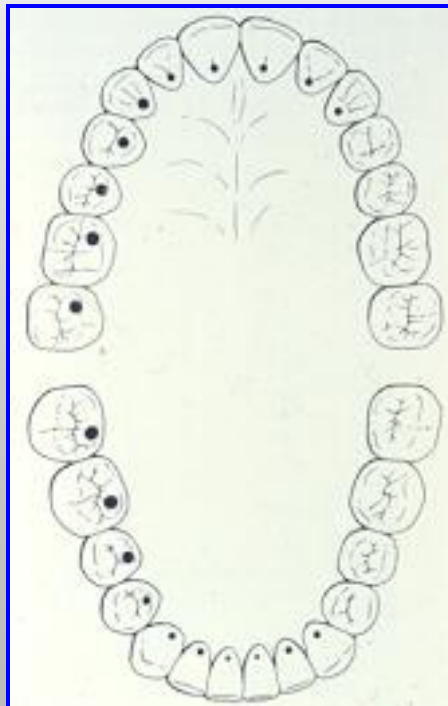
RUBBER DAM FRAME

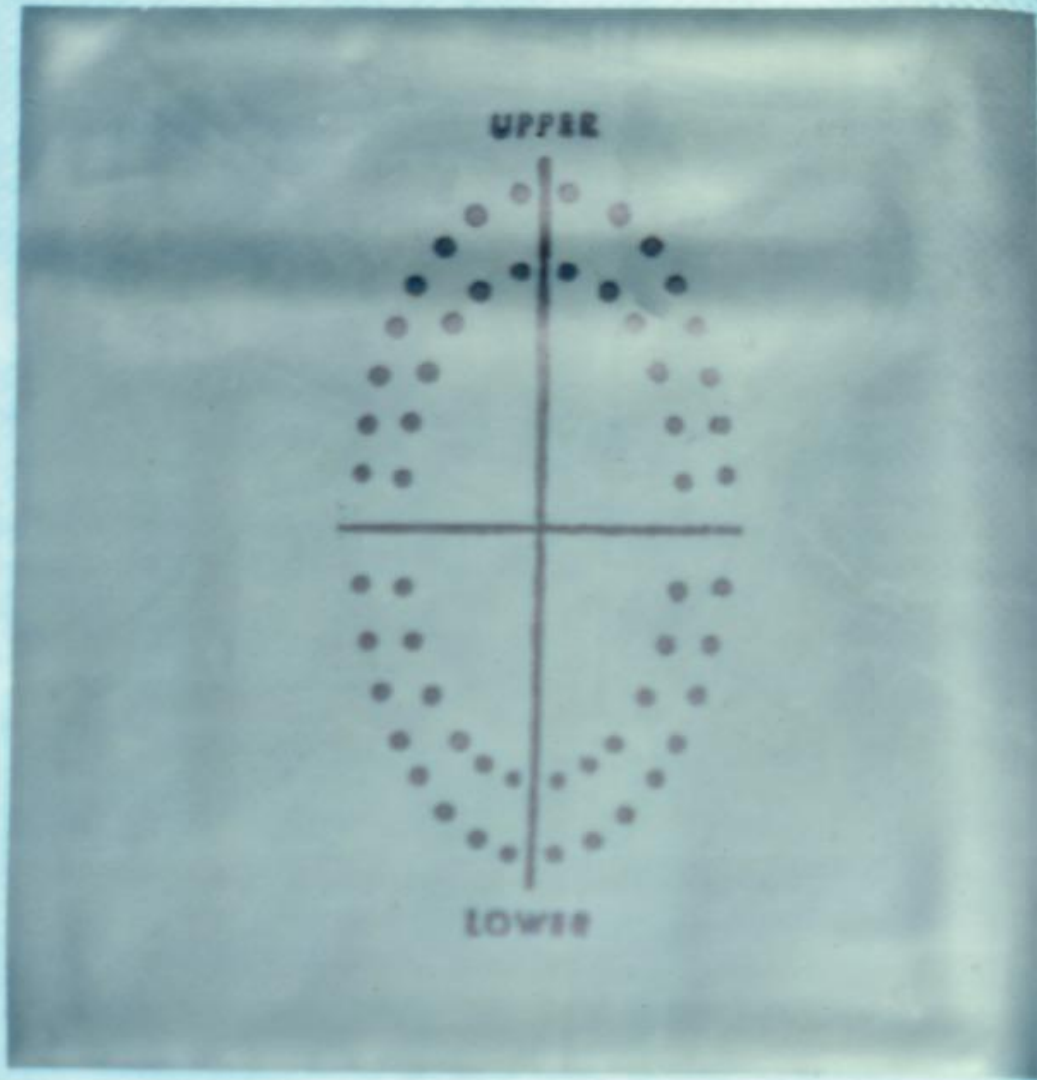
- *ALWAYS PLACED ON TOP OF THE RUBBER DAM
- USED TO SECURE THE EXTRAORAL RUBBER DAM MATERIAL
- CAN BE METAL OR PLASTIC



RUBBER DAM STAMP OR TEMPLATE

Rubber dam material is stamped to determine correct location to punch the hole





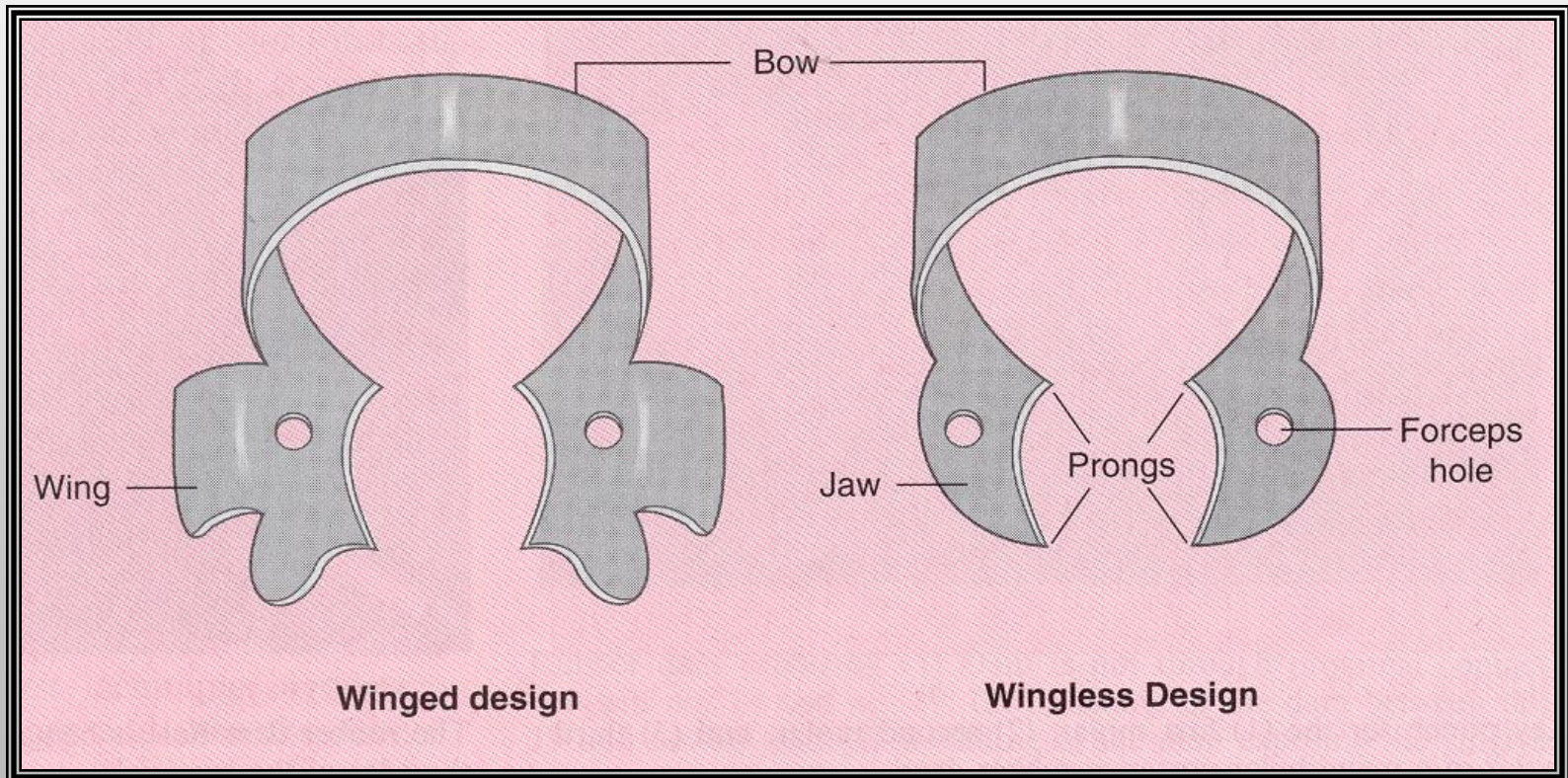
ARMAMENTARIUM

- **RUBBER DAM CLAMP**
 - PROVIDES THE INTRAORAL STABILIZATION OF THE RUBBER DAM
 - **ANCHOR**
 - RETRACTS THE GINGIVA
 - WINGED
 - WINGLESS



RUBBER DAM CLAMPS

Two Designs of Clamps



CLAMP

BOW – JOINS TWO JAWS OF CLAMP
TOGETHER

FORCEPS HOLE – WHERE THE RUBBER DAM
FORCEPS ATTACH TO THE CLAMP

JAW – SECURES THE CLAMP TO THE TOOTH

PRONGS (POINTS) – PARTS OF THE JAWS THAT
CONTACT TOOTH

WINGS – ATTACHES RUBBER DAM TO CLAMP



RUBBER DAM CLAMP

SELECTION IS BASED ON THE ANATOMY OF
THE ANCHOR TOOTH

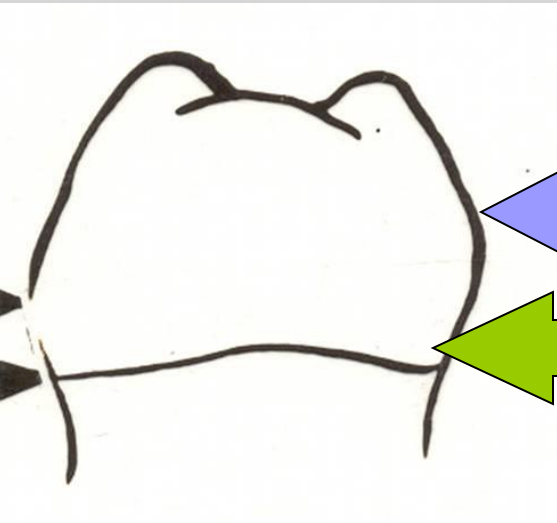




PROPERLY PLACED CLAMP

ALL FOUR PRONGS SHOULD
CONTACT

THE TOOTH NEAR ITS LINE ANGLES
CERVICAL TO THE HEIGHT OF
CONTOUR.

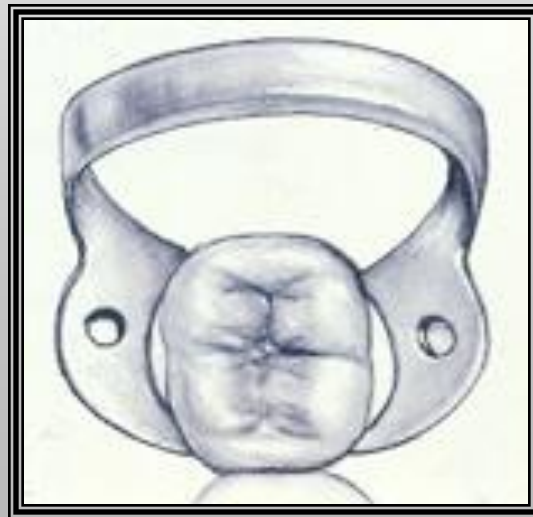


HEIGHT OF CONTOUR

PLACEMENT OF CLAMP

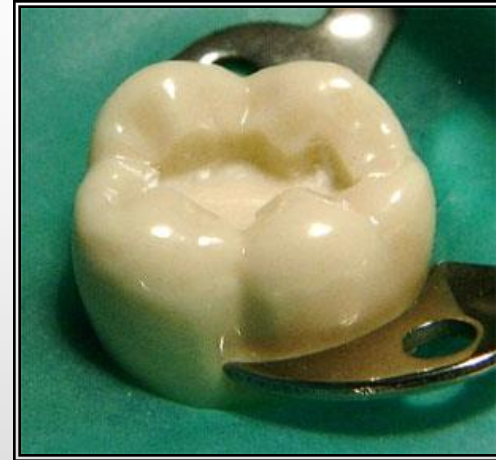
PROPERLY PLACED CLAMP

Clamp should be stable when gently rocked with light finger pressure.

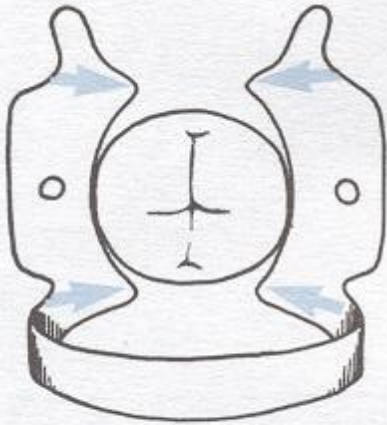


PROPERLY PLACED CLAMP

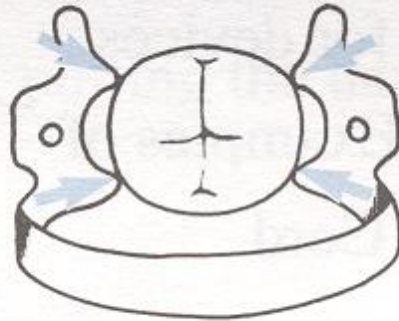
CLAMP SHOULD
NOT IMPINGE ON
SOFT TISSUE.



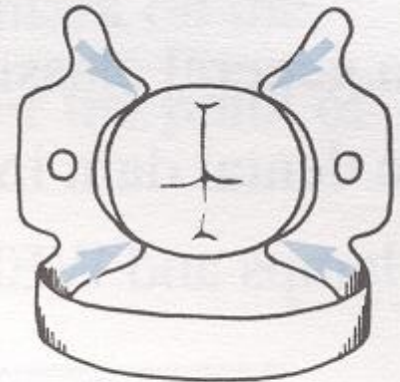
PROPERLY PLACED CLAMP



Too Large



Too Small



Correct

WHICH ONE IS CORRECT?



ARMAMENTARIUM

- **DENTAL FLOSS**



DENTAL FLOSS USE



**THERE MUST ALWAYS BE FLOSS ATTACHED
TO THE CLAMP BEFORE SEATED IN THE
PATIENT'S MOUTH**

**THIS IS DONE SO THAT THE CLAMP CAN BE
RETRIEVED IF IT IS ACCIDENTALLY
SWALLOWED/GOES DOWN THE PATIENT'S
AIRWAY.**

**NO FLOSS ON CLAMP = AUTOMATIC
FAILURE**

Winged Technique for Rubber Dam Placement

1



2



3



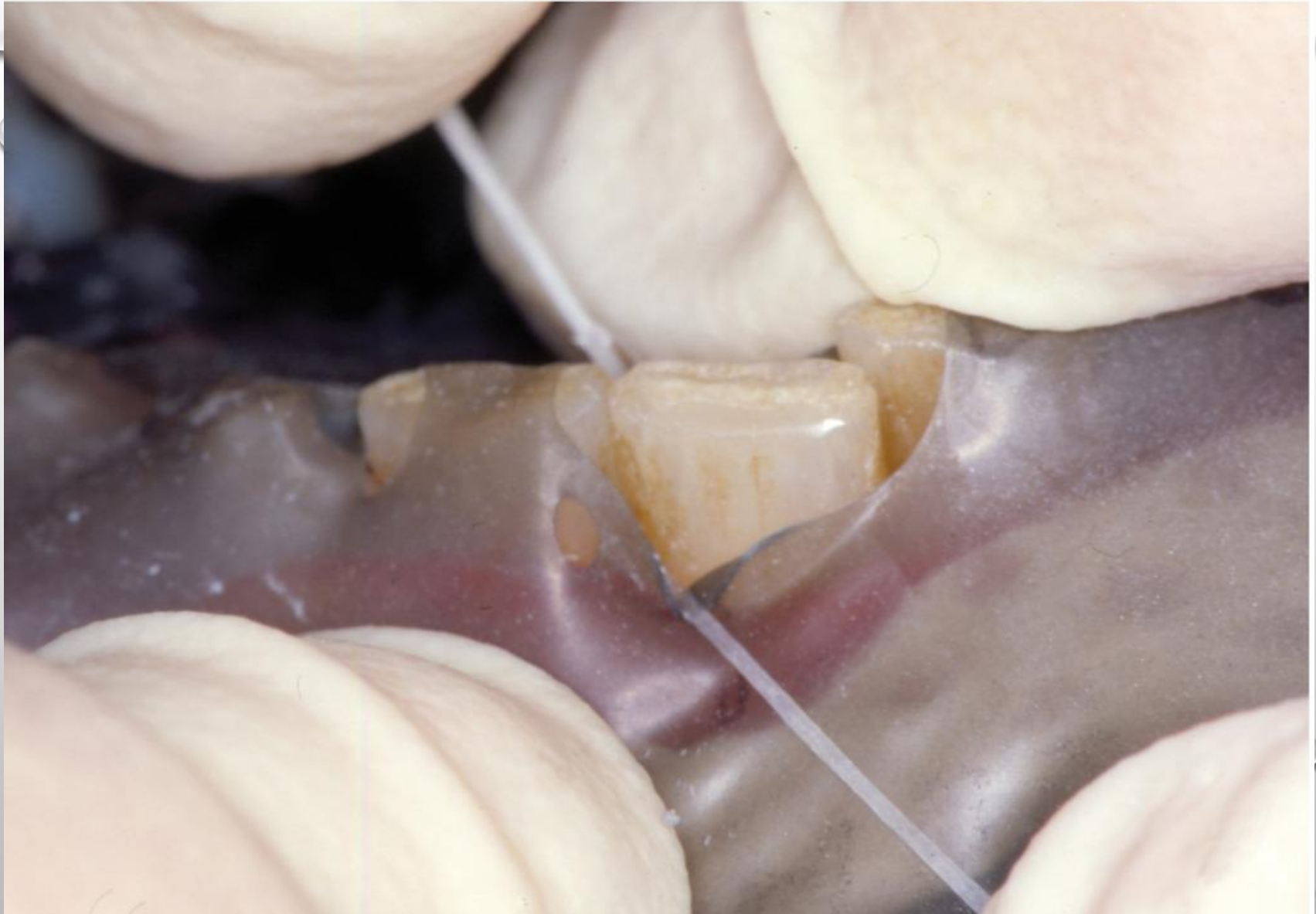
4



Winged Technique Continued





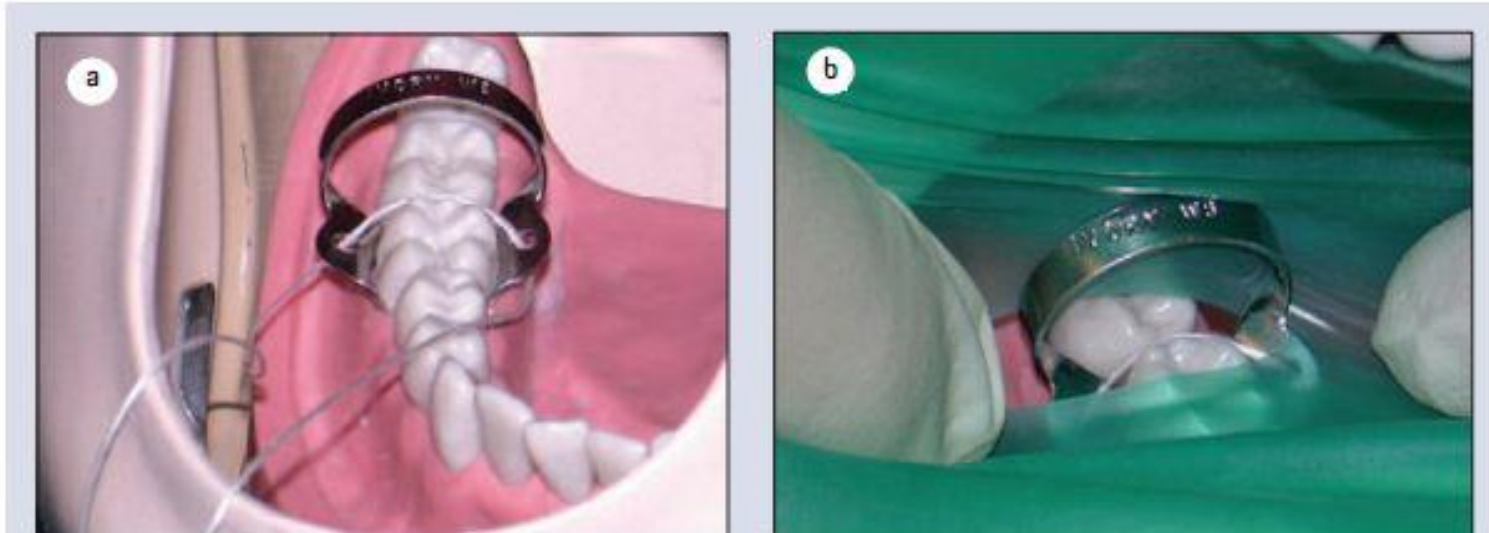




Final Step for Winged Technique Only



Wingless Technique



Video for Wingless Technique



Opal Dam



myagmoor

Dentistry Faculty K.A.U



Rubber Dam Removal

