

# Cementicles, Cemental Spurs, Concrecence

By: Akbar Sayeed

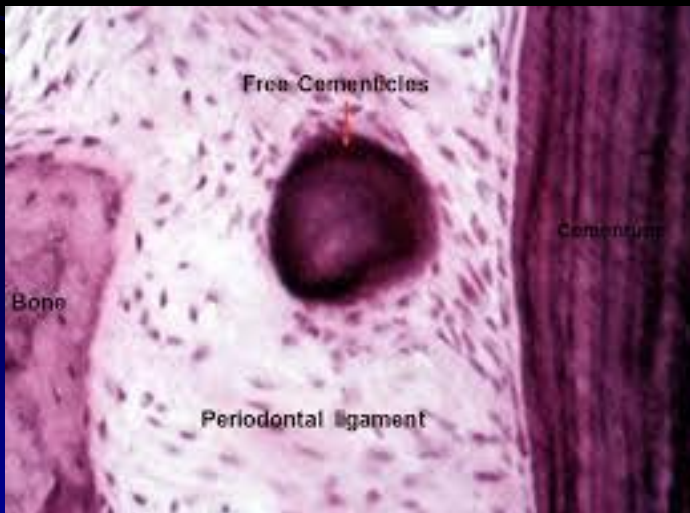


# Cementicles

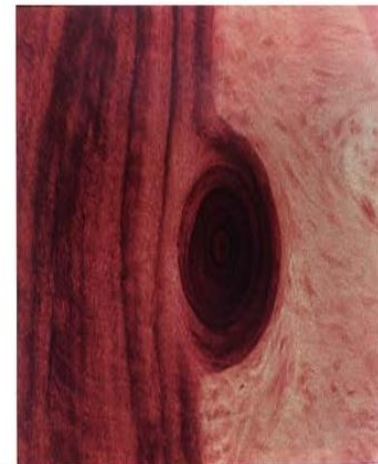
- Spherical calcified/mineralized bodies lying free in the periodontal membrane.
- May also be incorporated within the cementum or the alveolar bone
- They become attached or fuse from the continued appositional growth of cementum and may be noted on radiographs

## 3 Types:

- 1) Embedded cementicles (within the cementum)
- 2) Attached cementicles
- 3) Free cementicles ( not attached to cementum)



## ATTACHED CEMENTICLES ON SURFACE OF CEMENTUM



# Cemental spurs

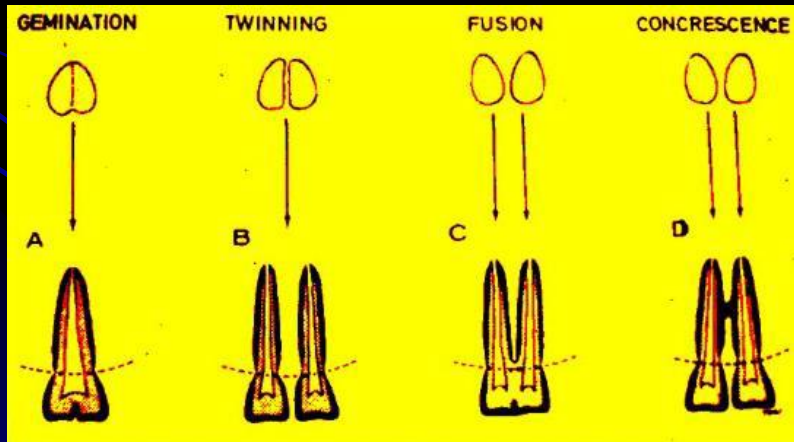
- **Cemental spurs** can be found at or near the CEJ.
- Symmetrical spheres of cementum attached to the cemental root surface
- Cemental spurs result from irregular deposition of cementum on the root
- They can present some clinical problems in differentiation from calculus and may be noted on radiographs because they are hard dental tissue,
- They are not easily removed thus may also interfere with periodontal treatment.



# Concrecence



- Fusion of two teeth from the root structure through the cementum only
- Commonly affects permanent maxillary molars
- In a clinical setting some considerations may be Extraction or Endodontic complications.



# Role of Dental Team

- Be able to distinguish from calculus.
  - Identify the radiographic appearance of Cementicles, Cemental Spurs, Concrescence
  - Document any abnormality findings
  - Referral to dental specialist if need may be.
- 