

Fusion vs Gemination

Developmental Disturbances During The Cap Stage

By George Murphy
January 2016
DEN1114- Histology

Characteristics

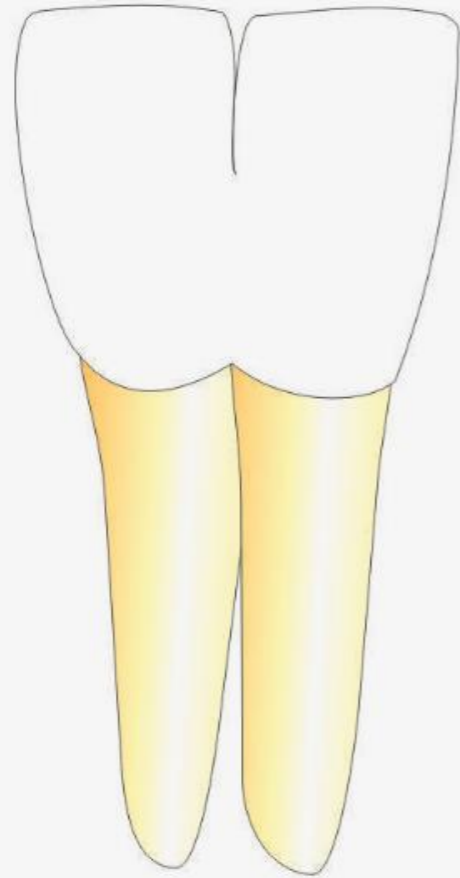
Fusion

- During Cap Stage: Union of Two adjacent tooth germs
- Etiological Factors: Pressure in area of fusion site. (Force)
- Clinical Ramifications: Large Crown with TWO distinct pulp cavities.
- Number of Teeth is ONE less due to Fusion.

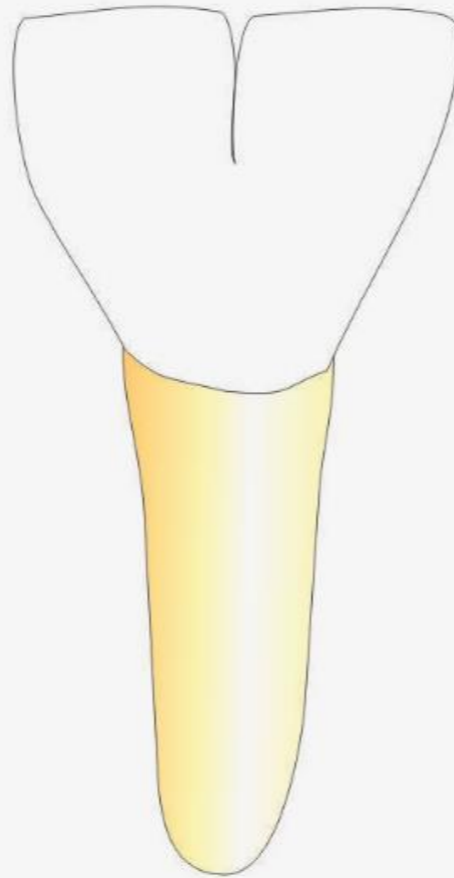
Gemination

- During Cap Stage: Tooth germ tries to divide.
- Etiological Factors: Hereditary
- Clinical Ramifications: Large Crown with single pulp cavity.
- Normal Number of Teeth Present.

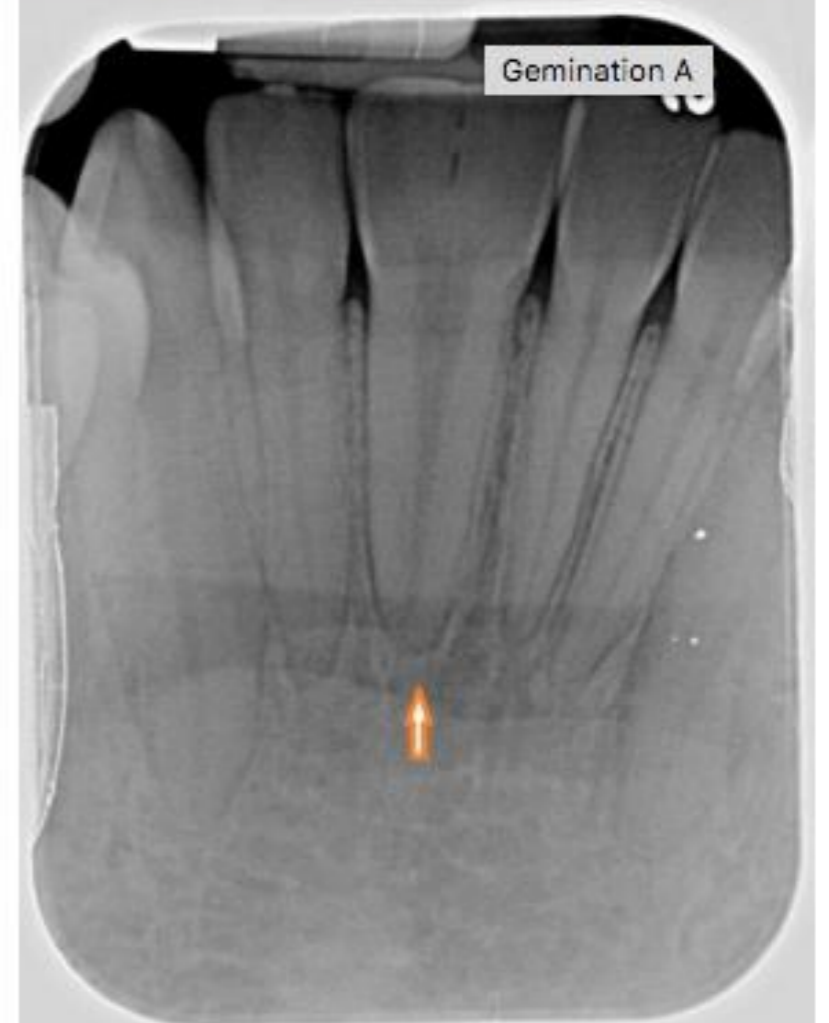
Photos



Fusion



Gemination



Actual Fusion Tooth Restructuring and Positioning



The Actual Surgery



Role of Dental Team

- If patient presents with this developmental disturbance; Note it in chart, and inform patient.
- If it is a problem for the patient, patient could be referred to endodontist, or orthodontist, to provide the general dentist a “blank canvas to work on” in order to restructure the Tooth into looking more aesthetically normal.
- Patient could still have their cleaning.