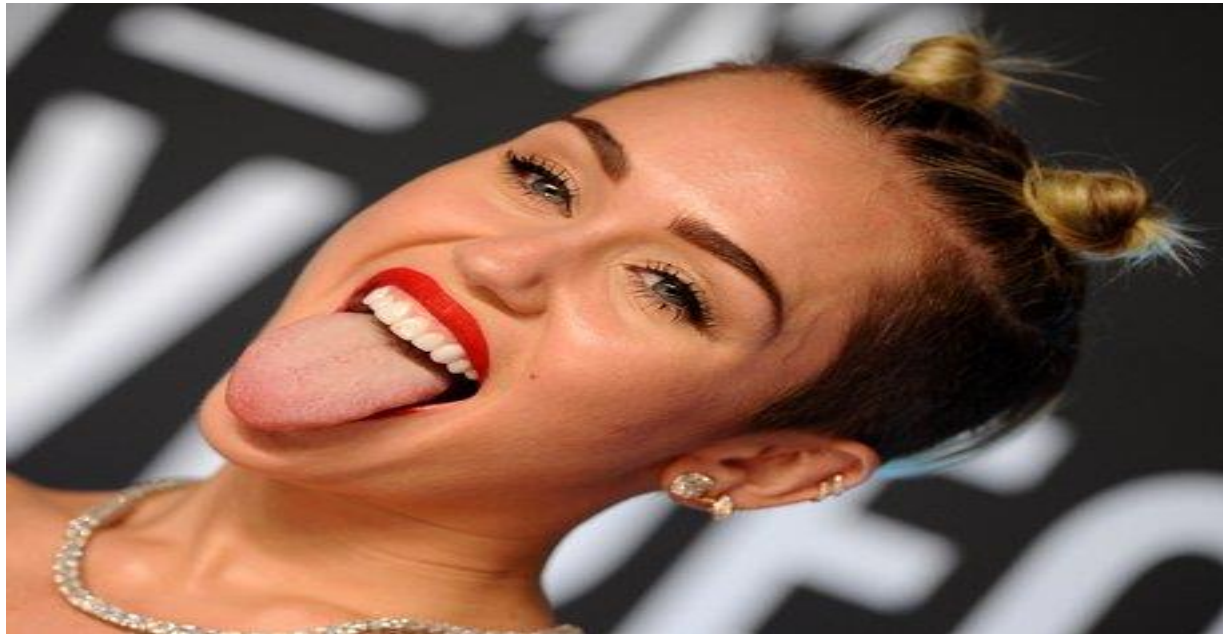


THE TONGUE



Gehan Ibrahim
DEN 1114

ANKYLOGLOSSIA

ALSO DESCRIBED AS “TONGUE-TIE”

AN UNUSUALLY SHORT, THICK LINGUAL FRENULUM WHICH TETHERS THE BOTTOM OF THE TONGUE’S TIP TO THE FLOOR OF THE MOUTH.



WHAT IT IS...

- ◆ IT IS A CONDITION PRESENT AT BIRTH THAT RESTRICTS THE TONGUE'S RANGE OF MOTION.
- ◆ RESULTS IN DIFFICULTY OF STICKING THE TONGUE OUT
- ◆ IT CAN AFFECT THE WAY A CHILD SPEAKS, EATS, SWALLOWS AND IT ALSO INTERFERES WITH BREAST-FEEDING.
- ◆ AFFECTS ORAL HYGIENE
- ◆ ITS CAUSE IS UNKNOWN

GEOGRAPHIC TONGUE

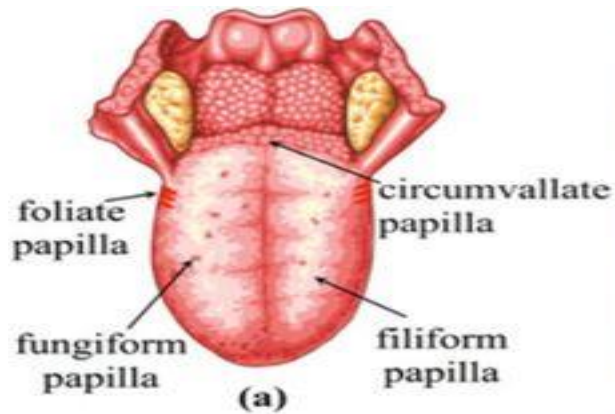
PATCHES ON THE SURFACE OF THE TONGUE ARE MISSING PAPILLAE AND APPEAR AS SMOOTH, RED "ISLANDS," OFTEN WITH SLIGHTLY RAISED BORDERS.



WHAT IT IS...

- ◆ IT'S A HARMLESS CONDITION AFFECTING THE SURFACE OF YOUR TONGUE.
- ◆ NORMALLY COVERED WITH TINY, PINKISH-WHITE BUMPS (PAPILLAE) WHICH ARE ACTUALLY SHORT, FINE, HAIR-LIKE PROJECTIONS.
- ◆ THESE PATCHES (LESIONS) THAT ARE MISSING, GIVE THE TONGUE A MAP-LIKE, OR GEOGRAPHIC APPEARANCE.
- ◆ THE LESIONS OFTEN HEAL IN ONE AREA AND THEN MIGRATE TO A DIFFERENT PART OF THE TONGUE.

- ◆ although geographic tongue may look alarming, it does not cause health problems and isn't associated with infection or cancer.
- ◆ it can sometimes cause tongue discomfort and increased sensitivity to certain substances.
- ◆ the cause is unknown



(c)



(d)



(e)



(f)

BLACK HAIRY TONGUE

RESULTS FROM A BUILD UP OF DEAD SKIN CELLS ON THE NUMEROUS TINY PAPILLAE ON THE SURFACE OF YOUR TONGUE THAT CONTAIN TASTE BUDS.



WHAT IT IS...

- ◆ Temporary, harmless oral condition that gives your tongue a dark furry appearance.
- ◆ These papillae trap and can be stained by tobacco, food or other substances and bacteria or yeast.
- ◆ Excess of keratin formation.
- ◆ Although black hairy tongue may look alarming, typically it does not cause any health problems and is usually painless.



ROLE OF THE DENTAL TEAM

- ◆ Practicing good oral hygiene and eliminating factors that may contribute to the condition of black hairy tongue- such as tobacco use.
- ◆ Surgical treatment may be required for Ankyloglossia.
- ◆ No treatment needed for Geographic tongue.

