

# Dental Charting

DEN1100

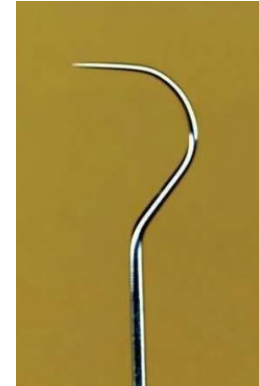


# Hard Tissue Examination Procedure

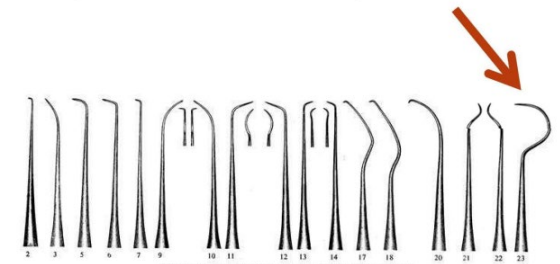
- Shepherd's Hook Explorer is used for hard tissue examination.
- It resembles the long, curved stick used by shepherds to catch sheep

Supragingival use only, for examination of:

- Dental caries (decay)
- Margins of restorations



Shepherd's Hook Explorer #23





# Hard Tissue Examination Procedure



**Dental Charting of Existing Conditions:** missing teeth (extracted, unerupted), supernumerary teeth, fixed and removable prostheses, sealants, overhangs, open contacts, etc.)

## **Assessment of Non-carious and Carious Lesions:**

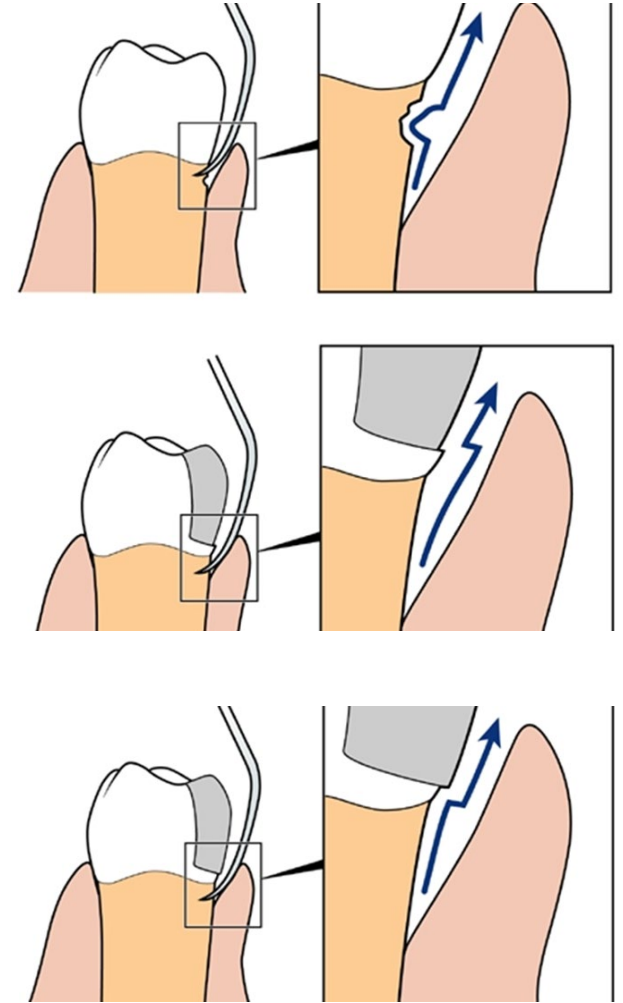
- Visual examination
- Radiographic examination
- Clinical examination
- Documentation

**Occlusion:** normal occlusion, malocclusion, malrelations

# Assessment of restorations and Dental Caries with Explorer

- **Overhanging restorations:** Explorer must move away from the tooth and over the restoration. "Skating over a section of a sidewalk that is higher than the adjacent section"
- **Deficient margin of restoration:** Explorer dips in to trace the restoration. "Skating onto a section of pavement that is lower than the surrounding pavement"
- **Carious lesion:** Explorer tip dips into a rough depression. "Skating into a pothole".

*\*For exploring of cavitated lesions the use of the side of the explorer, probe, or PSR probe is advised.*



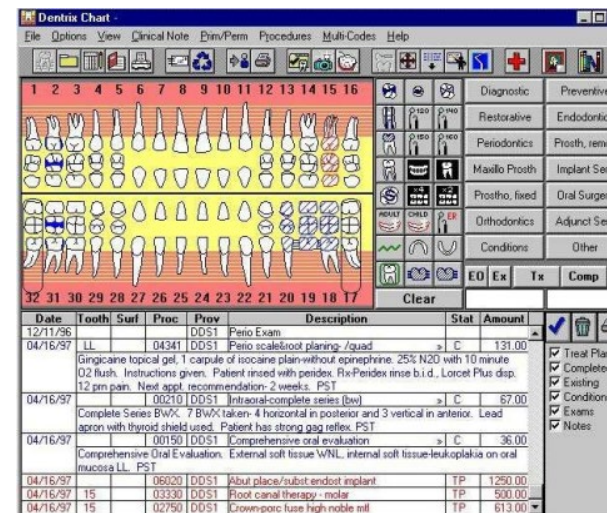
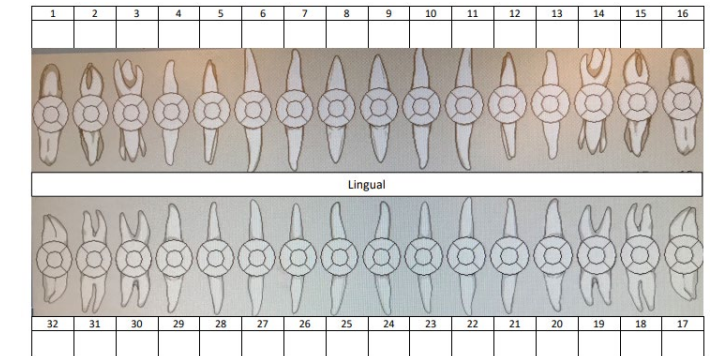
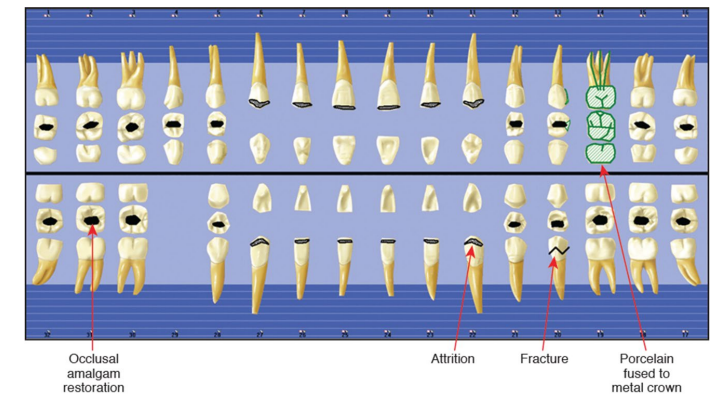
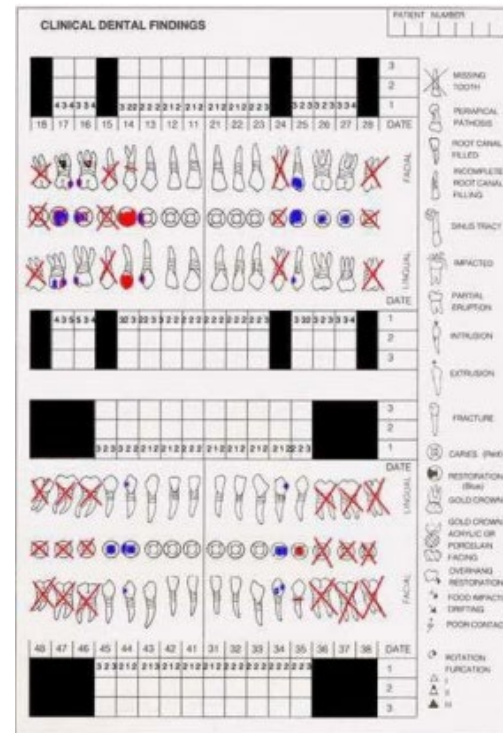
# Dental Charting Procedure:

- Use Clinical worksheet
- If applicable, cross out any missing teeth, chart mixed dentition
- Use mouth mirror, Shepard Hook Explorer, and air/water syringe to evaluate all teeth. Look closely at each tooth to identify present restorations (sealants, composite fillings, amalgam fillings, crowns, bridges, onlays/inlays, etc.), and conditions (decay, attrition, erosion, abfractions, etc.)
- Chart your findings CW
- Evaluate occlusion: Class of occlusion on both sides, measure overbite and overjet - record those findings in CW.
- Complete Caries risk box CW
- Faculty will work with you on confirming your findings.
- Once approved by faculty, transfer your findings to Dentimax Chart and write a statement in a SOAP note.



# Charting and Documentation

- Graphic charts: anatomic drawings or geometric representation
- Paper forms (clinical worksheet)
- Digital software
- Clinical notes (SOAP)



# Examples of Restorations





# Dental Charting in Dentimax:

- Once you open your patient's chart, click on **CHART** and open the **Current Conditions Panel** on the left side of the screen.
- Use only **“Existing Restorations” mode** to chart present conditions (caries, fillings, missing teeth, etc.)
- NOTE: dental charting saves automatically

