

*Audio for The Electroacoustic
Improvisation Summit*

Daniela Tomaino – SP 2022

Introduction/ Project Description

This project revolved around the audio system for the Electroacoustic Improvisation Summit (EIS). This is a show that the Entertainment Technology Department produces each Spring semester. This show had a complex networked audio system that need to deliver audio live in person, online via streaming, and for archival recording.

My Role

- oversee the installation and operation of the system as the audio crew chief
- Front of House mixer
- ensure that the system is thoroughly documented for the future.

The Process...

Step 1...

✓ Strike “A Cowboy From the Bronx” Audio System

✓ Meet with Professor Huntington to discuss what needed to get done for EIS, and how it would be executed.

- April 9-11, 2022**
- Work on EIS diagrams, lists, etc.
 - Initial meeting w/ advisor Professor Huntington

- April 12, 2022**
- Strike audio system from Cowboy from the Bronx

- April 14, 2022**
- Shop prep of audio in V-014

- April 15, 2022**
- Set up Dante patches/Soft patches of the system

- April 18, 2022**
- Load-in and install EIS sound system

- April 28, 2022**
- Tech Act 1

- April 29, 2022**
- Tech in the morning of act 2-5
 - Show! @ 7pm
 - Strike sub and racks on stage

- May 3, 2022**
- Strike complete audio system

- May 3- May 13, 2022**
- Finalize poster, PowerPoint
 - Meet w/ Prof. Huntington

- May 16, 2022**
- Poster Session



The Process cont....

Step 2...

Shop prep of audio system in V-014 based on Professor Huntington Input & Patch Sheet and network system

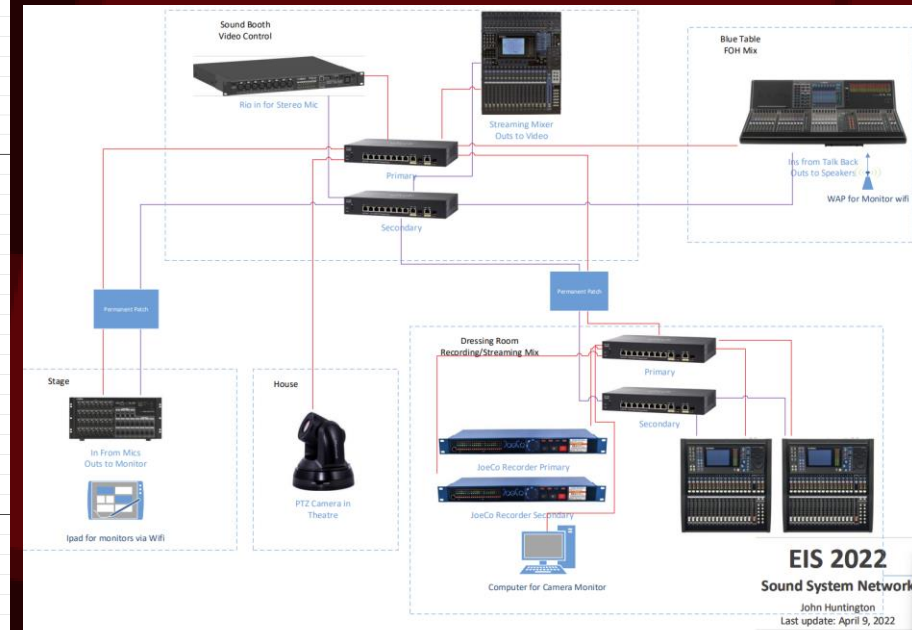
Soft patching of system/Dante



Preliminary Paperwork

EIS 2022 Input and Patch Sheet						
By: John Huntington Last Updated: 4/18/22						
Input	FOH CL5 Patch	Type	CL5 Ch	JoeCo Dante In	LS9 Dante	LS9 Ch
Stage Box-1	Act 1 L		1		LS9-1: Slot In Ch 1	LS9-1: 1
Stage Box-2	Act 1 R		2		LS9-1: Slot In Ch 2	LS9-1: 2
Stage Box-3	Act 2 L		3		LS9-1: Slot In Ch 3	LS9-1: 3
Stage Box-4	Act 2 R		4		LS9-1: Slot In Ch 4	LS9-1: 4
Stage Box-5	Act 3 L		5		LS9-1: Slot In Ch 5	LS9-1: 5
Stage Box-6	Act 3 R		6		LS9-1: Slot In Ch 6	LS9-1: 6
Stage Box-7	Act 4 L		7		LS9-1: Slot In Ch 7	LS9-1: 7
Stage Box-8	Act 4 R		8		LS9-1: Slot In Ch 8	LS9-1: 8
Stage Box-9	Act 5 1		9		LS9-1: Slot In Ch 9	LS9-1: 9
Stage Box-10	Act 5 2		10		LS9-1: Slot In Ch 10	LS9-1: 10
Stage Box-11	Act 5 3		11		LS9-1: Slot In Ch 11	LS9-1: 11
Stage Box-12	Act 5 4		12		LS9-1: Slot In Ch 12	LS9-1: 12
Stage Box-13			13		LS9-1: Slot In Ch 13	LS9-1: 13
Stage Box-14			14		LS9-1: Slot In Ch 14	LS9-1: 14
Submix In from LS9-2 to LS9-1 L					LS9-1: Slot In Ch 15	LS9-1: 15
Submix In from LS9-2 to LS9-1 R					LS9-1: Slot In Ch 16	LS9-1: 16
Stage Box-17	Wireless Mic A (with Dugan)	Beta58	17	17	LS9-2: Slot In Ch 1	LS9-2: 1
Stage Box-18	Wireless Mic B (with Dugan)	Beta58	18	18	LS9-2: Slot In Ch 2	LS9-2: 2
Stage Box-19	Wireless Mic C (with Dugan)	Beta58	19	19	LS9-2: Slot In Ch 3	LS9-2: 3
Stage Box-20	Wireless Mic D (with Dugan)	Beta58	20	20	LS9-2: Slot In Ch 4	LS9-2: 4
Stage Box-21			21	21	LS9-2: Slot In Ch 5	LS9-2: 5
Stage Box-22			22	22	LS9-2: Slot In Ch 6	LS9-2: 6
Stage Box-23	Announce/Audience Question Mic	Wired SM58	23	23	LS9-2: Slot In Ch 7	LS9-2: 7
Stage Box-24	Announce Spare	Wired SM58	24	24	LS9-2: Slot In Ch 8	LS9-2: 8
Stage Box-25			25	25	LS9-2: Slot In Ch 9	LS9-2: 9
Stage Box-26			26	26	LS9-2: Slot In Ch 10	LS9-2: 10
Stage Box-27			27	27	LS9-2: Slot In Ch 11	LS9-2: 11
Stage Box-28			28	28	LS9-2: Slot In Ch 12	LS9-2: 12
Stage Box-29			29	29	LS9-2: Slot In Ch 13	LS9-2: 13
Stage Box-30			30	30	LS9-2: Slot In Ch 14	LS9-2: 14
Ambience Mic L From 01v96 Slot Out 5				31	LS9-2: Slot In Ch 15	LS9-2: 15
Ambience Mic R From 01v96 Slot Out 6				32	LS9-2: Slot In Ch 16	LS9-2: 16
CL5 Internal						
CL5 Talkback	FOH Talkback	Wired SM58				
Mix 1	Monitor 1	fo Stage Box 1				
Mix 2	Monitor 2	fo Stage Box 2				
Mix 8	Subwoofer	fo Stage Box 8				
CL5 Outputs						
Omni 1	Matrix 1	CQ L				
Omni 2	Matrix 2	CQ R				
Omni 3	Matrix 3	UPA-1P L				
Omni 4	Matrix 4	UPA-1P R				
LS9-1 Internal						
Mix 1	Monitor L					
Mix 2	Monitor R					

LS9-2 Outputs						
L	Submix Out from LS9-2 to LS9-1 L				LS9-2: Slot Out Ch 15	LS9-2: Out L
R	Submix Out from LS9-2 to LS9-1 R				LS9-2: Slot Out Ch 16	LS9-2: Out R
Rio 3224 Outputs						
Out 1	Monitor 1	UPA-2P L				
Out 2	Monitor 2	UPA-2P R				
Out 3						
Out 4						
Out 5						
Out 6						
Out 7						
Out 8	Subwoofer	650P				
01v96 For Streaming Inputs						
				Routing		
1	Lav 1				Via Snake 1	
2	Lav 2				Via Snake 2	
3						
4						
5	Ambient Stereo Mic L			Local		Insert Out to Slot Out 5
6	Ambient Stereo Mic R			Local		Insert Out to Slot Out 6
7						
8						
9	Qlab L			Local		
10	Qlab R			Local		
11						
12						
13						
14						
15	EIS Submix L				Dante Slot 1: 15	
16	EIS Submix R				Dante Slot 1: 16	
01v96 Outputs						
L	Video Feed L					
R	Video Feed R					
Omni 1	Local Monitor	M-Audio				
Omni 2	Stage Monitor	UPM		Via Snake A		
Omni 3						
Omni 4						

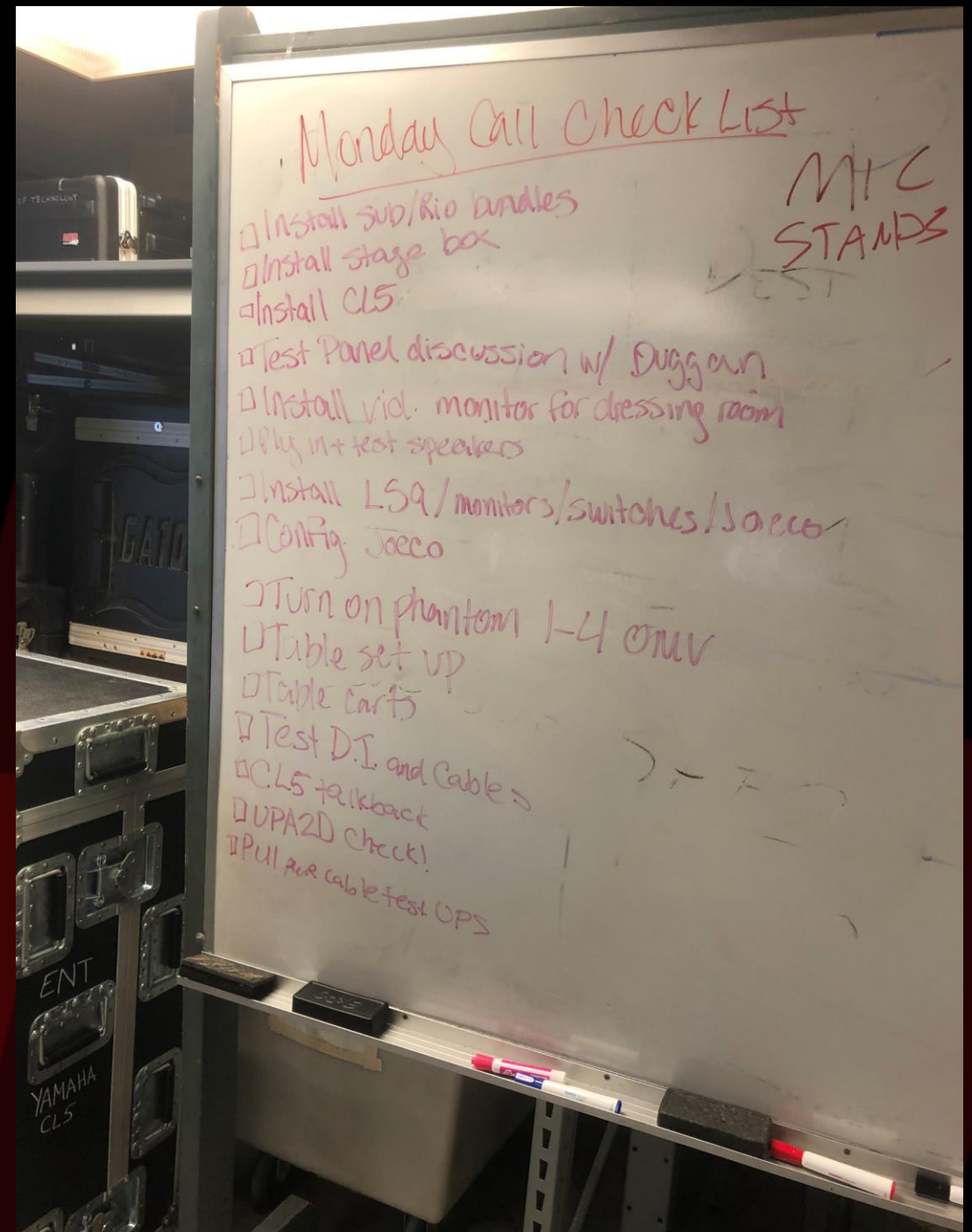


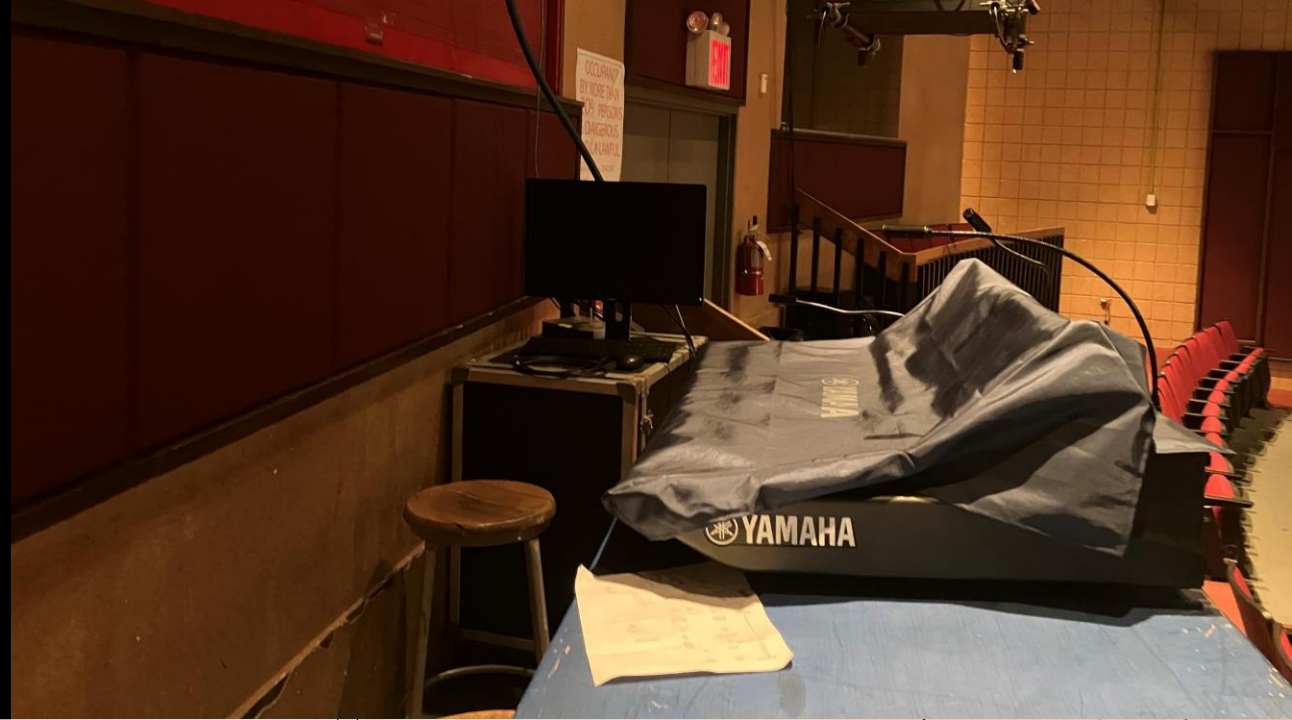
The Process cont....

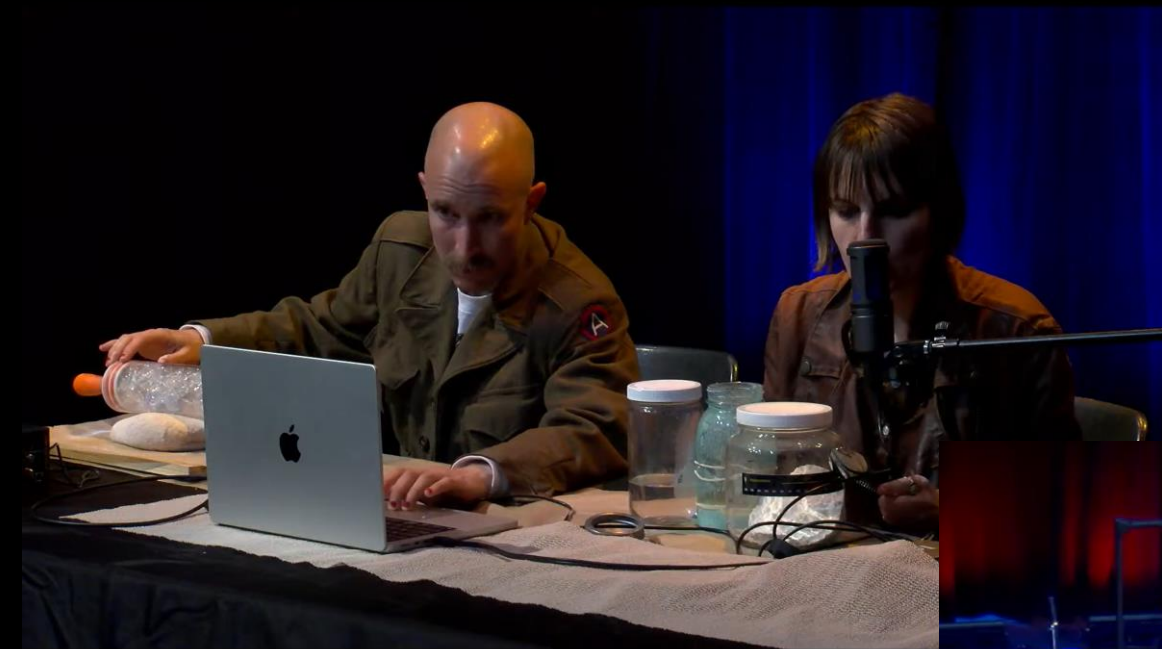
Step 3...

✓ Create a plan for installation day

✓ Install the system into the
Voorhees theatre









SHOW DAY!

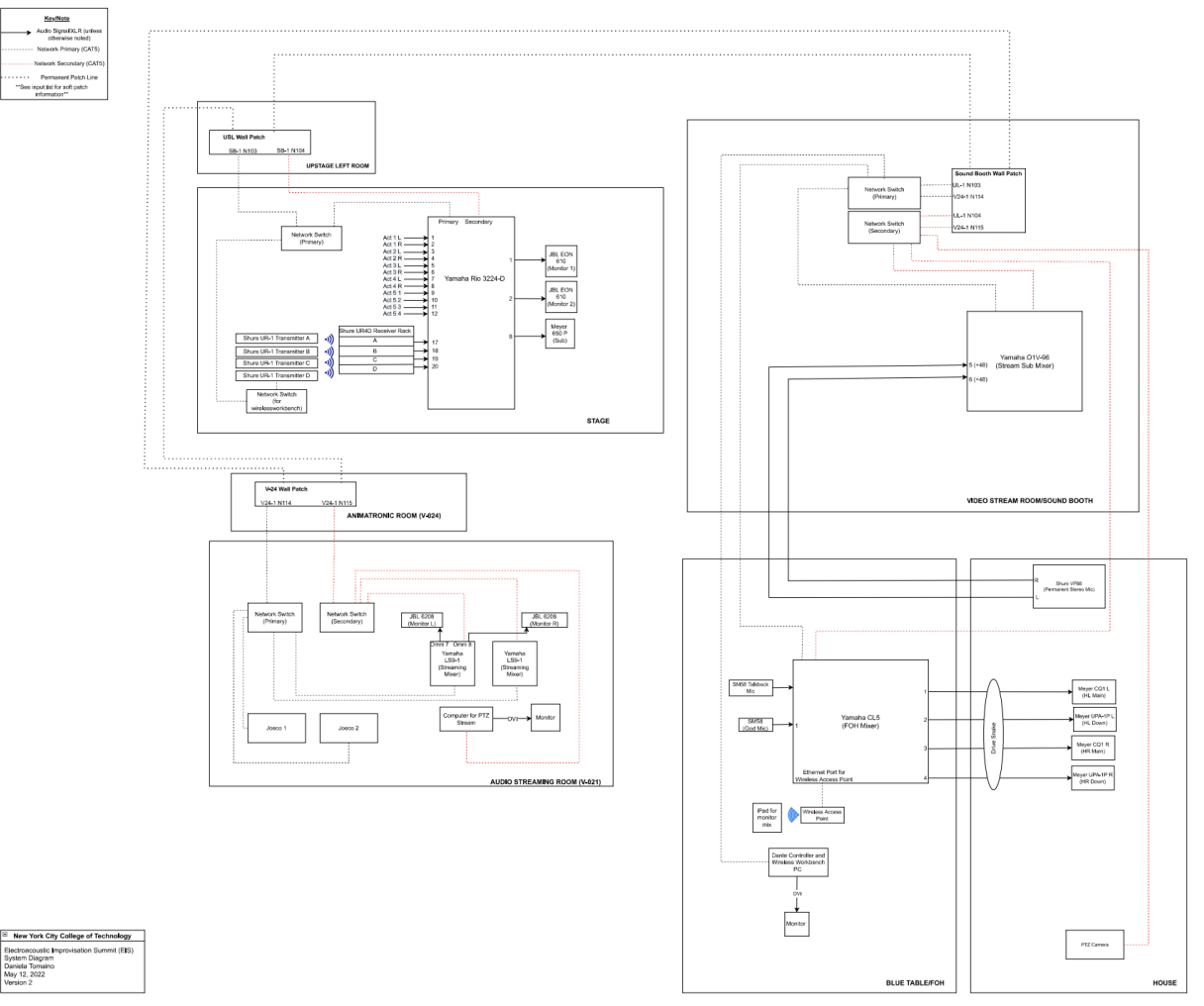


Strike!

- ✓ Immediately after the show we had to quickly strike the stage of the sub and mic racks.
- ✓ A few days after this we had to strike the entire audio system

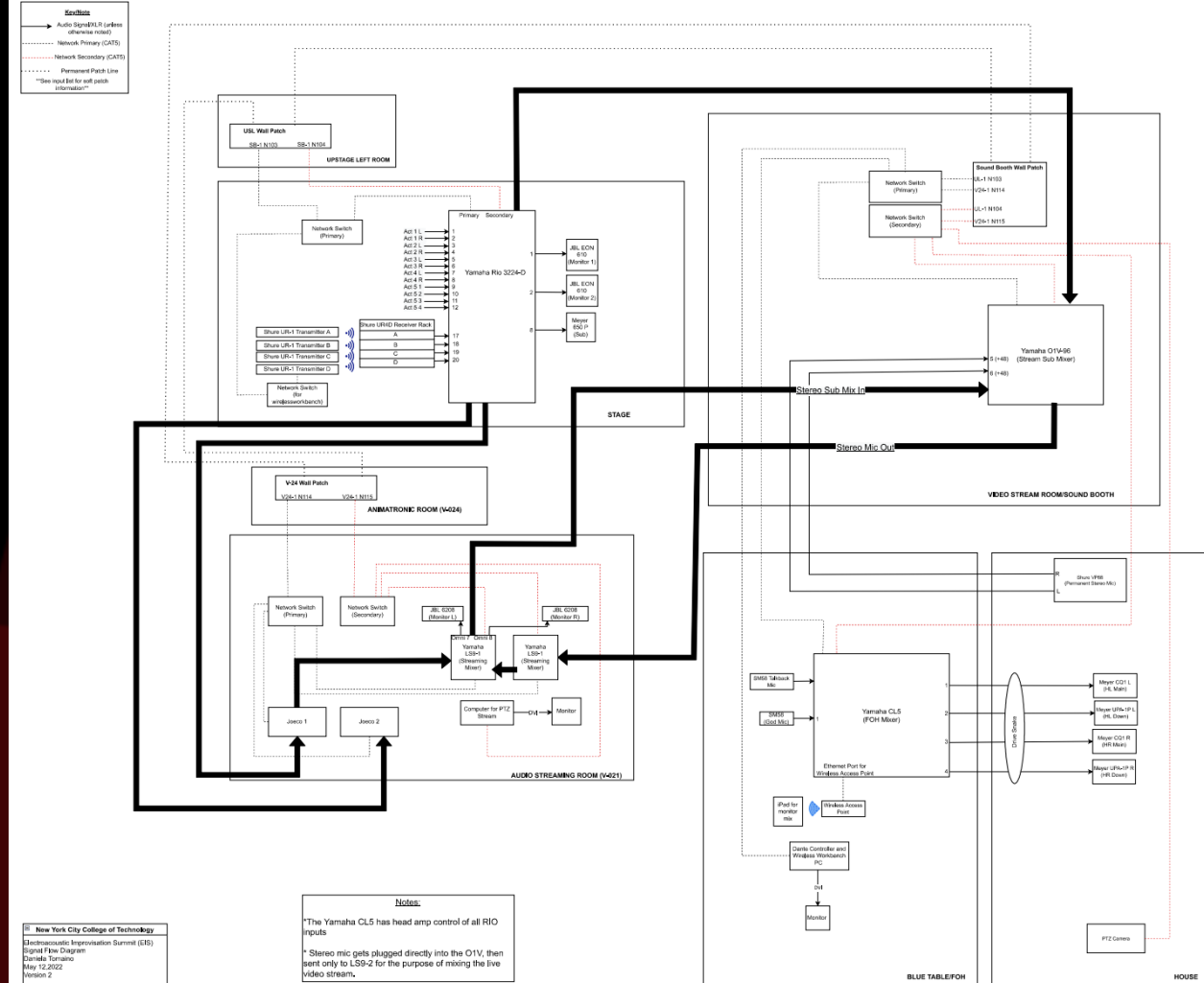
Documenting the Show for the Future

EIS Audio System 2022



System Diagram

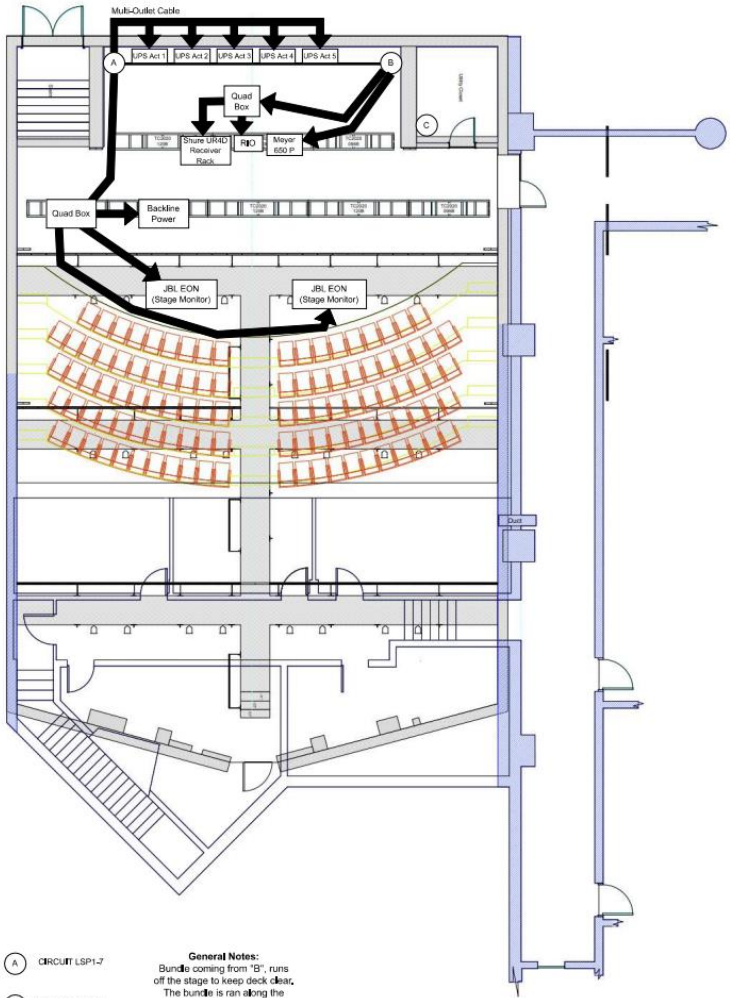
EIS Signal Flow 2022



Signal Flow

EIS Audio Power Runs 2022

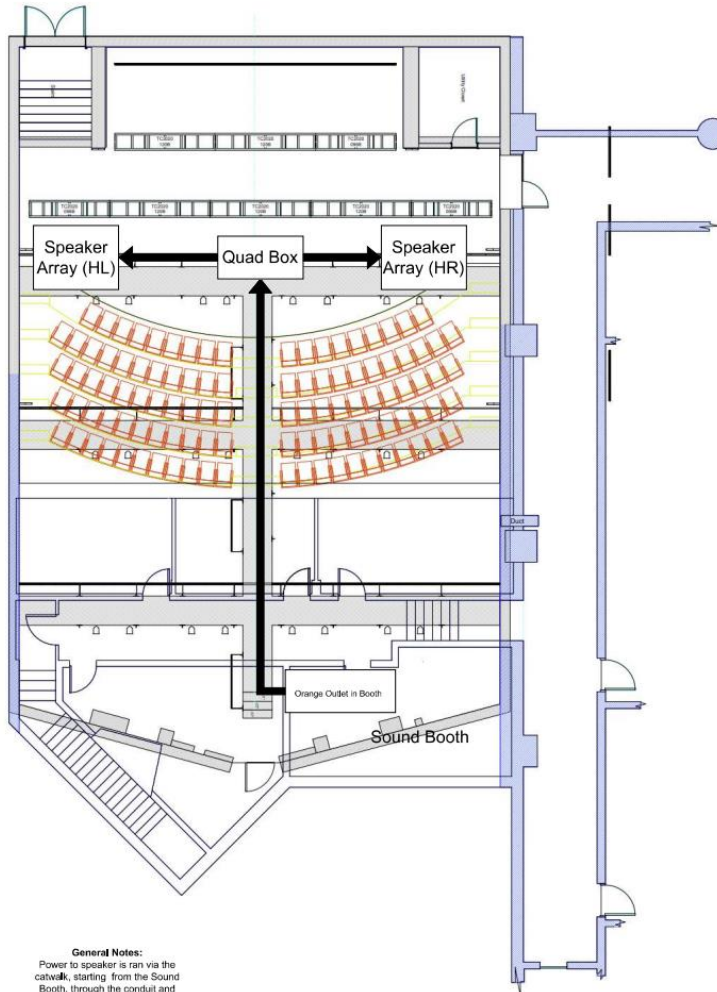
Stage Power Runs



- (A) CIRCUIT LSP1-7
- (B) CIRCUIT LSP1-5
- (C) BREAKER

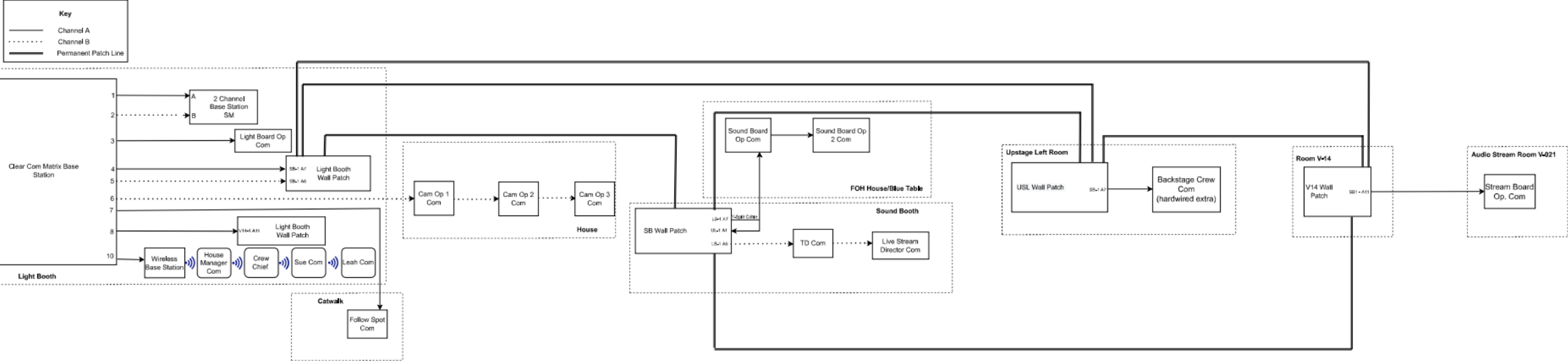
General Notes:
 Bundle coming from "B", runs off the stage to keep deck clear. The bundle is run along the wall, then tied to a hoist rope tied to the 2nd truss.

Catwalk Power Runs



General Notes:
 Power to speaker is ran via the catwalk, starting from the Sound Booth, through the conduit and along the catwalk to a quad box located above Catwalk 3.

EIS Clear Com System 2022



New York City College of Technology
 Electroacoustic Improvisation Summit (EIS)
 Clear Com System Diagram
 Daniela Tomaino
 May 12, 2022
 Version 2

Clear Com

Possible Upgrades

Purchasing Request

Date: May 10, 2022

Name of Requester: Daniela Tomaino

Request Title: Luminex Network Switch Upgrade

Part #	Product	Quantity	Unit	Cost	Extended Cost	Vendor
LU0100058-POE	Luminex GigaCore 10 Pre-Configured 8-Port Ethernet Switch with PoE	8	per.	\$2,273	\$18,180	https://www.bhphotovideo.com/c/product/1477869-REG/luminex_lu0100058_poe_gigacore_10_8x_neutral.html
LU0100058	Luminex GigaCore 10 Pre-Configured 8-Port Ethernet Switch	8	per.	\$1,615.50	\$12,924.00	https://www.bhphotovideo.com/c/product/1477855-REG/luminex_lu0100058_gigacore_10_8x_neutral.html
LU0100052-POE	Luminex GigaCore 26i Gigabit Ethernet Switch with 370W PoE Supply (24 RJ45 Ports, 6 SFP	6	per.	\$4,005	\$24,030	https://www.bhphotovideo.com/c/product/1477829-REG/luminex_lu0100052_poe_gigacore_26i_gigabit_ethernet.html
LU0100052	Luminex GigaCore 26i Gigabit Ethernet Switch (24 RJ45 Ports, 6 SFP Ports)	6	per.	\$3,025.50	\$18,153.00	https://www.bhphotovideo.com/c/product/1477828-REG/luminex_lu0100052_gigacore_26i_gigabit_ethernet.html

Challenges in the Process

- Not a mixer
- Never lead a crew before
- No previous networked audio experience.
- Before the show, how many people we had to work the show was up in the air (scheduling conflicts).
Would we have enough people?
- Time crunch in-between shows.
- Some issues during the show (violin had feedback loop, turned on gate instead of compression)

What did I Learn?

Learned A LOT

- More comfortable on CL5 with basic mixing and patching
- More comfortable with networked audio and Dante
- More practice with documentation
- Learn how to lead a crew, lessons in management and leadership



Thank You!!!

Professor Huntington – Advisor
Tech Production Audio Crew – Joel Barbecho, Nick Mallios, Sibel Yalin,
Adam Valle, Hesler Garcia, Michael Torres, Wilson Huang, David Binns,
Nesreen Hosameldin, Sepidah Saleh
Cindy Vazquez – Monitor Mixer/ Head A2
Friends and Family!