

# ANALYZING A SUPPLEMENT

With fewer restrictions on supplements it's harder to figure out what is truly on the label, and if it is selling what it claims. Organizations such as NSF International conducts testing that allows supplements to be certified. Testing is key to ensuring that the product is good for the consumer.



## Application

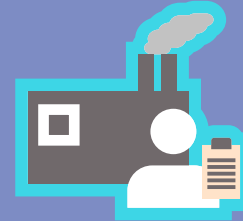
Application gathers the formulation, label, ingredients, suppliers and manufacturing information.



## Toxicology Review

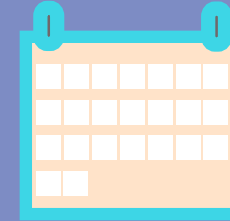
The review compares the label to the formulation. Formulation is essentially what has been mixed in the product being tested.

They also review the ingredient and determination of product testing.



## Facility Inspection

Facility Inspection inspects the suppliers contact with the product being tested. This includes reaching the Good Manufacturing Practices, observations of in-house laboratories, sourcing and traceability procedures, and ingredients provided by the supplier.



## Annual Laboratory Testing

With constant changes to products annual testing of microbiologicals, Heavy metals, pesticides/herbicides, label content, verification, and disintegration is included in its review.



## Product Certification

A product certified continues to be monitored for control formulation/ingredient supplier changes as well as marketplace sampling - testing the product that goes on the shelves.



NSF International is a nonprofit group that aids in ensuring that the public health is protected. They create public health standards and certifications that protects water, food and consumer products as well as the environment.