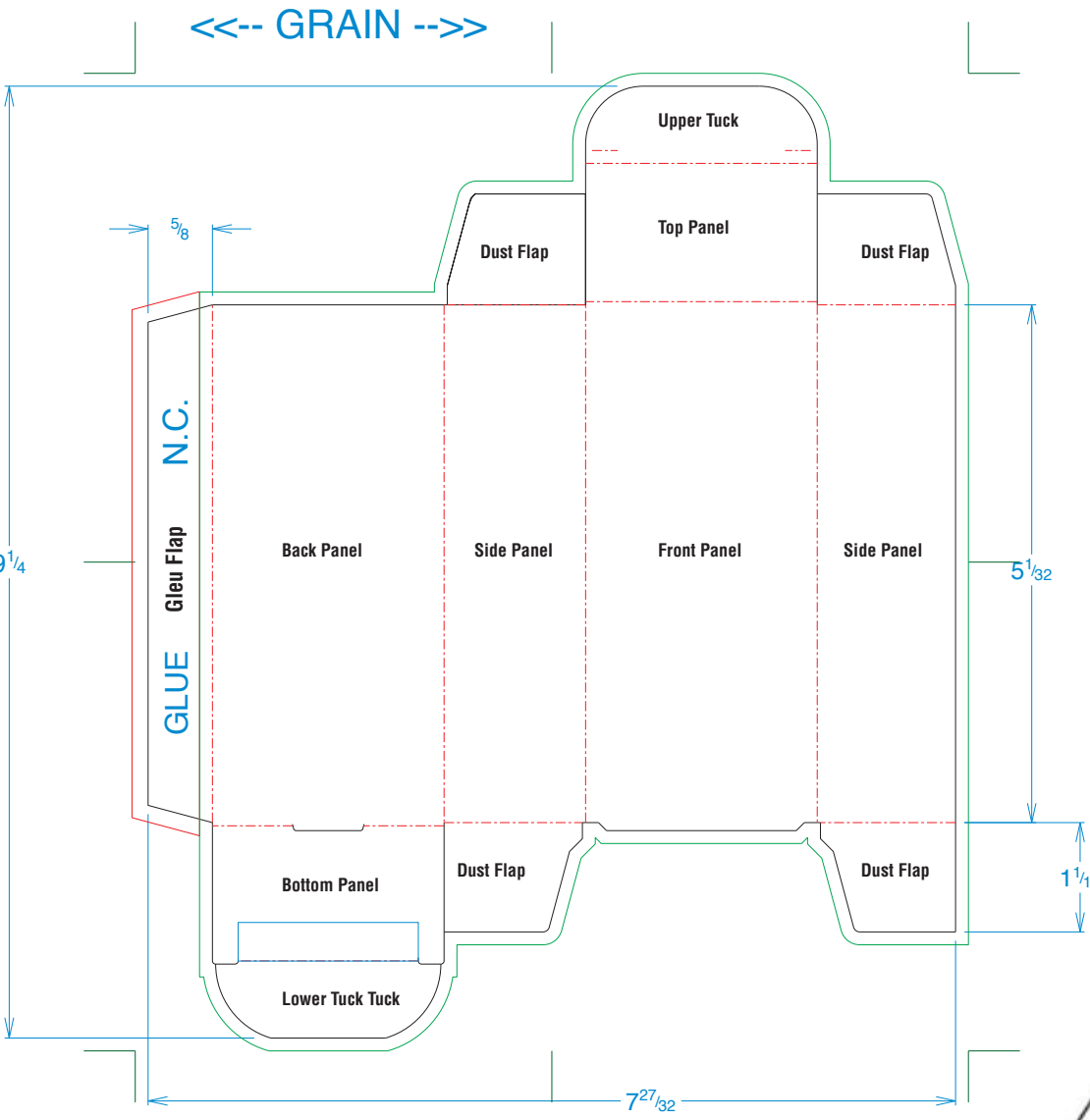
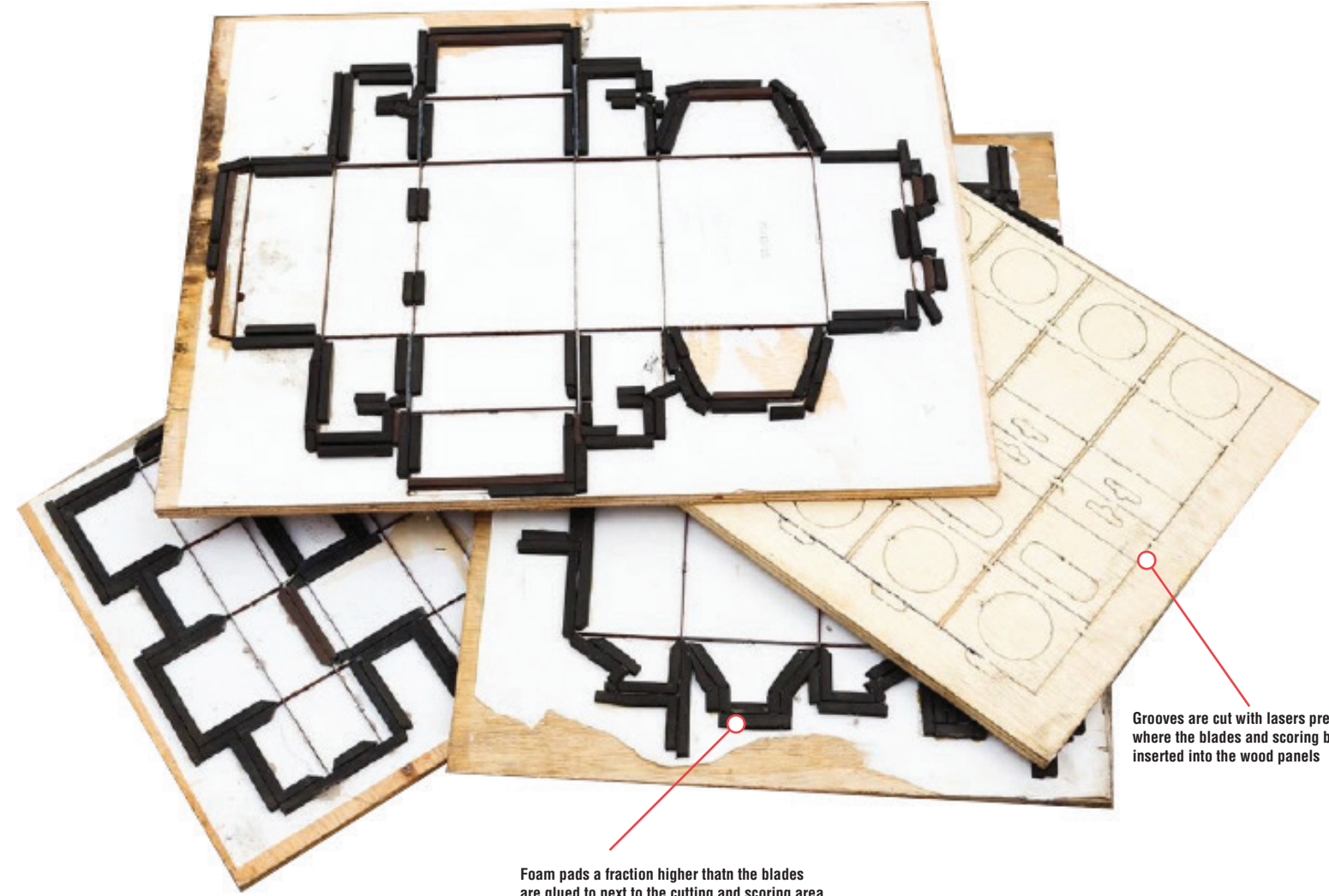


Understanding a Die Line



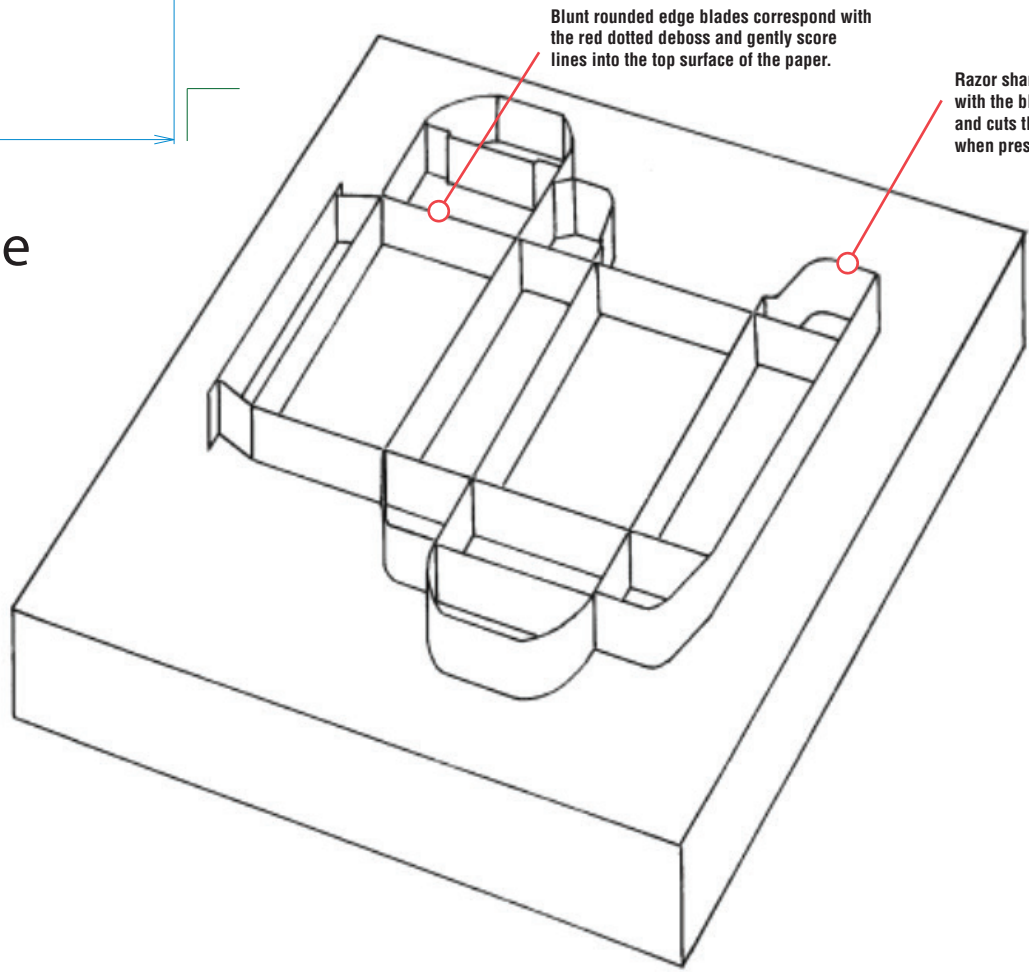
Red Dotted Line = Fold
 Solid Black Line = Cut
 Solid Green Line = Bleed



Foam pads a fraction higher than the blades are glued to next to the cutting and scoring area to assure that the paper doesn't slip

Grooves are cut with lasers precisely where the blades and scoring bars are inserted into the wood panels

Die



Blunt rounded edge blades correspond with the red dotted deboss and gently score lines into the top surface of the paper.

Razor sharp blades correspond with the black lines on die line and cuts through paper thickness when pressed into the paper

How a die board is made
<https://www.youtube.com/watch?v=8F4ofe4ox5Y>

Digital Cutting Table
https://www.youtube.com/watch?v=Mhn8R_cur84

Die Cut machine in operation
https://www.youtube.com/watch?v=_6H81grG4HQ&feature=emb_logo

Manual Die Cutting Machine
<https://www.youtube.com/watch?v=j9K9XGnixu4>