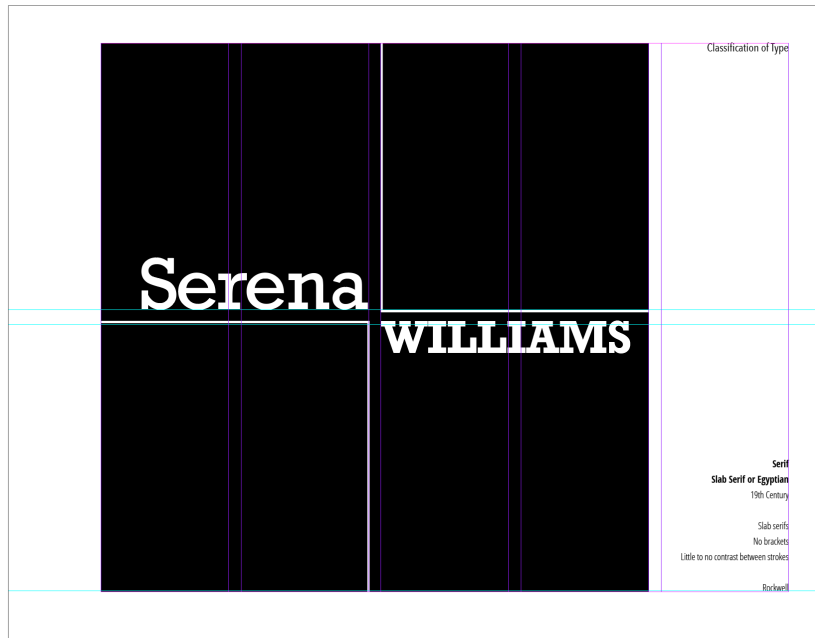


Graphic Assignment:

Type Classification or Families of Type:

Use pages 3 to 4 of your Book Document

**5th Column Info:**

- Name of Classification and Sub Classification
- Timeline (when)
- Characteristics (at least 2)
- Name of typeface used

Use the first 4 columns as your entire "art area"**Page#1: Serif**

Choose: an Old Style, Transitional, Modern, or Slab Serif Typeface

Page#2: Sans Serif

Choose: any Sans Serif Typeface

Do not use display, scripts or novelty typefaces

Must use the complete name of famous person / Create an interesting composition with caps and lower case or all lowercase type

Can use basic lines and shapes, but avoid gradients, illustrations and photos