

Kimmerly Gomez

COMD 1100

A shade of blue

Ultramarine is a shade of blue which is also known for "True Blue." It all started back in the 6th Century; the pigment came from a Gemstone called Lapis Lazuli. Lapis Lazuli is a deep blue metamorphic rock that change in form. Metamorphic rocks are formed through high heat, high pressure, hot mineral-rich and fluids. Back then, the Egyptians had trouble making the color ultramarine into paint form. While in the process of trying to attempt this color, it resulted in forming a dull gray. Therefore, they decided to make jewelry and headdresses. Ultramarine was an expensive color, its deep royal color was just as precious as gold. The artist who created "the girl with a pearl earring" loved the color so much that he ended up pushing his family into debt. The theory of Michelangelo leaving his painting behind call "The Entombment" was unfinished because ultramarine blue was expensive to restock on.

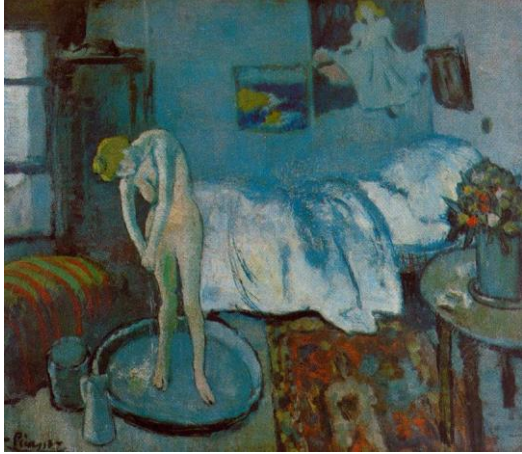
According to Cameron Chapman "Cool colors included green, blue, and purple, are often more subdued than warm colors of night, of water, of nature, and are usually calming, relaxing, and reserved." Blue can associate with a lot of different emotions, depending on the shade it can bring Emotions that are either uplifting or the complete opposite. Blue is a primary color, and its part on the cool spectrum. Examples of what blue are used at are at Spas, bathrooms, quiet environment, and it represents dependability, stability, and authority. which is commonly worn in uniform. Jennifer Bourn states "The different shades, tints, and hues of blue have different meanings behind it. As an example, dark blue be elegant, rich, sophisticated, intelligent, and old fashioned, royal blue can represent superiority, and light blue can mean honesty and trustworthiness." Presidents often wear navy blue during an important conference because it is presentable, it looks sharp and it is a sign for good luck. Blue is worn by Police officers, which symbolize protection. Blue is traditional, from infants to adults. We are given colors at birth like pink and blue. Pink representing it is a girl and blue as in it is a boy. Blue is described as a favorite color by many people and it is the color preferred by men. Most would say It is more of a masculine color. Dark blue is associated with depth, expertise, and stability; it is a preferred color for corporate America.

When it comes to blue it reminds me of being Refresh, relaxed, comfortable, and it brings a nature feel. It is a very soothing color to the eyes, as if it can make you feel safe and protected. Some would say that blue rooms can be calming or depressing for humans. And it also influences humans. According to bourns, "blue is often used to decorate offices because research has shown people are more productive in blue rooms. It is one of the least appetizing,

some weight loss plans even recommend eating of a blue plate. Humans are geared to avoid foods that are poisonous and blue coloring in food is often a sign of spoilage or poison. "Blue can help to slow human metabolism, is cooling in nature, and helps with balance and self-expression. Blue is also an appetite suppressant. As the color of the spirit, it invokes rest and can cause the body to produce chemicals that are calming and exude feelings of tranquility. Blue can help to slow human metabolism, is cooling in nature, and helps with balance and self-expression. Blue is also an appetite suppressant.

A famous artist whose uses different various of blues is Pablo Picasso. He has art period decade to blue called "**The Blue Period 1901-1904**". In 1901, Picasso decided that he was in the position to make a response and create new art of his own. And that is when the "**The Blue Period**" came along. When he created most of his art it was during a winter season. The Revolution in Arts stated "The report that Picasso even burnt a large number of his drawings for heating that winter may be mere legend, but in terms of the art market he was certainly in the cold. And this isolation continued till 1905, when collectors began to take an interest in his work of the Blue and Rose Periods." During this time, he created an art piece called "The Blue Room". Blue was very important in this experiment because the meaning had a history Its melancholy mood was often discussed in theoretical writings on art and in literature at the time. Painter-poet Rusinol, one of the leading Catalan "Modernistas", published a short Symbolist tale, "El patio azul" (The Blue Courtyard), in the 10 March 1901 issue of Soler and Picasso's magazine "Arte Joven". The main character is a painter engaged in trying to capture the melancholy atmosphere of a courtyard surrounded by houses. In the process he meets a consumptive girl, who dies when he finishes his painting. Shortly after, in his studio at Boulevard de Clichy 130 in Paris, Picasso painted "**The Blue Room**". He was joining the debate on the significance of the colour.

"The Blue Room"-1901



Ultramarine

