

Construct your future with the New York State Department of Transportation

Transportation Construction Inspector

Each year, prior to the construction season, the New York State Department of Transportation (DOT) begins hiring qualified individuals to augment its permanent workforce. All Transportation Construction Inspectors (TCIs) are seasonal employees who assist in monitoring and inspecting construction projects beginning in April.

Tasks and Duties

Under the supervision of a Department of Transportation engineer, a Transportation Construction Inspector will be physically assigned to one or more construction projects to perform the following construction or materials inspection or inspection-related tasks:

- **Earthwork Inspection:** Inspects building of earth or rock embankments; conducts gradation, compaction and moisture content tests; checks thickness of materials placed and type and suitability of compaction equipment; assists in survey, layout and measurement activities.
- **On-Site Concrete Inspection:** Inspects concrete placement for pavement, bridge piers and abutments; tests air content and slump and obtains cylinders for subsequent load tests; inspects method of handling and placing concrete to minimize segregation, concrete finishing, and curing method; inspects paving trains to ensure smooth concrete pavement.
- **Structural Inspection:** Inspects steel erection, field welds, surface preparation and steel painting.
- **Drainage Inspection:** Inspects installation of culverts, sewers and ditches; ensures trench excavation is done safely for proper alignment and grade, that correct material is placed and properly shaped, and that material and compaction of backfill over pipe is correct.
- **Asphalt Pavement Inspection:** Inspects asphalt pavement placement; ensures correct temperature, lift thickness and proper compaction.
- **Materials Inspection:** Inspects concrete production; ensures ingredients are from an approved source and are mixed in correct proportions for a specified time period; checks that automation features are working properly;
- **Project Support Activities:** Calculates actual construction project length, areas and volumes; performs technical checking activities.
- **Materials Analyst:** Performs design, verification, or acceptance testing of construction materials at the central laboratory. Lab groups focus on geotechnical applications, strength of materials, geologic characterization, concrete asphalt, or chemical analysis.
- **Miscellaneous Inspection Assignments:** Inspects curbing, sidewalk, signs, guide rail, pavement markings, traffic signals, lighting, fencing, etc.



**Department of
Transportation**

Construct your future with the New York State Department of Transportation

Qualifications to Apply

Transportation Construction Inspector 1, hourly rate of \$19.51 as of 2023

- A. One *construction season (minimum of 3 months)* of work experience in highway, bridge or other civil engineering related construction inspection, as described in the Transportation Construction Inspector Tasks and Duties, or;
- B. Completion of at least one year (minimum of 27 semester credit hours) of college course work as part of an Associate's Degree program in engineering, engineering technology, construction technology, engineering science, surveying technology, drafting/CAD, or heavy equipment operations or;
- C. Completion of at least one year (minimum of 27 semester credit hours) of college course work as part of a Bachelor's Degree program in engineering, engineering technology, environmental sciences or environmental technology, construction management, construction supervision, engineering management, construction engineering or construction engineering technology, transportation planning, mathematics, physical science, architecture or architectural technology, construction technology, landscape architecture, surveying, physics, geology or forestry.

Transportation Construction Inspector 2, hourly rate of \$21.66 as of 2023

- A. Two **separate** *construction seasons (minimum 6 months total)* of work experience in highway, bridge or other civil engineering related construction inspection, as described in the Transportation Construction Inspector Tasks and Duties, or;
- B. Completion of an Associate's Degree program in engineering, engineering technology, construction technology, engineering science, surveying technology, drafting/CAD, or heavy equipment operations or;
- C. Completion of at least two years (minimum of 54 semester credit hours) of college course work as part of a Bachelor's Degree program in engineering, engineering technology, environmental sciences or environmental technology, construction management, construction supervision, engineering management, construction engineering or construction engineering technology, transportation planning, mathematics, physical science, architecture or architectural technology, construction technology, landscape architecture, surveying, physics, geology or forestry or;
- D. Completion of **one** *construction season* of work experience, as described in TCI 1 above, plus minimum of 27 semester credit hours of college course work as part of an Associate's or Bachelor's Degree program as cited above.

Transportation Construction Inspector 3, hourly rate of \$24.11 as of 2023

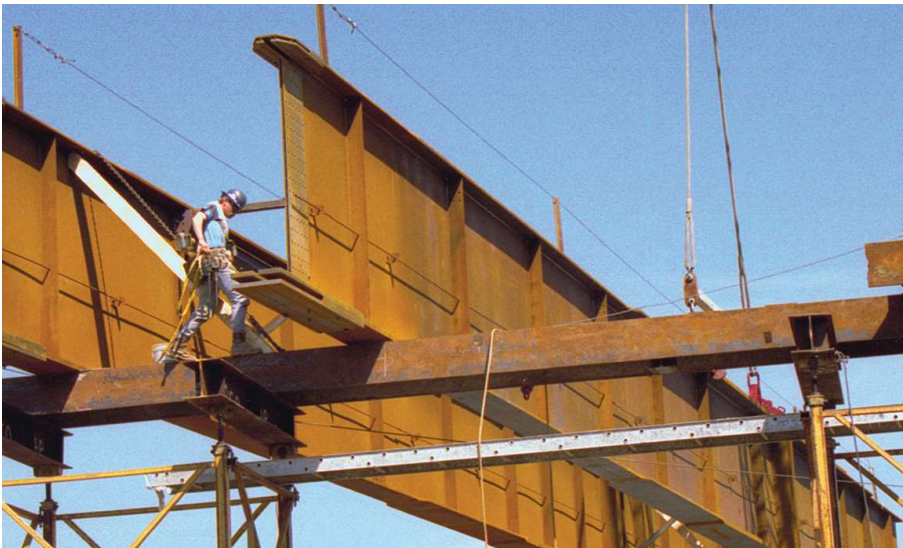
- All Transportation Construction Inspector 2's will progress to Transportation Construction Inspector 3 upon satisfactory completion of six months as a Transportation Construction Inspector 2 or completion of three months as a Transportation Construction Inspector 2 and completion of at least 27 additional credit hours of college course work as part of Bachelor's Degree program as cited in C above.

Construct your future with the New York State Department of Transportation

How to Apply

No Civil Service test required.

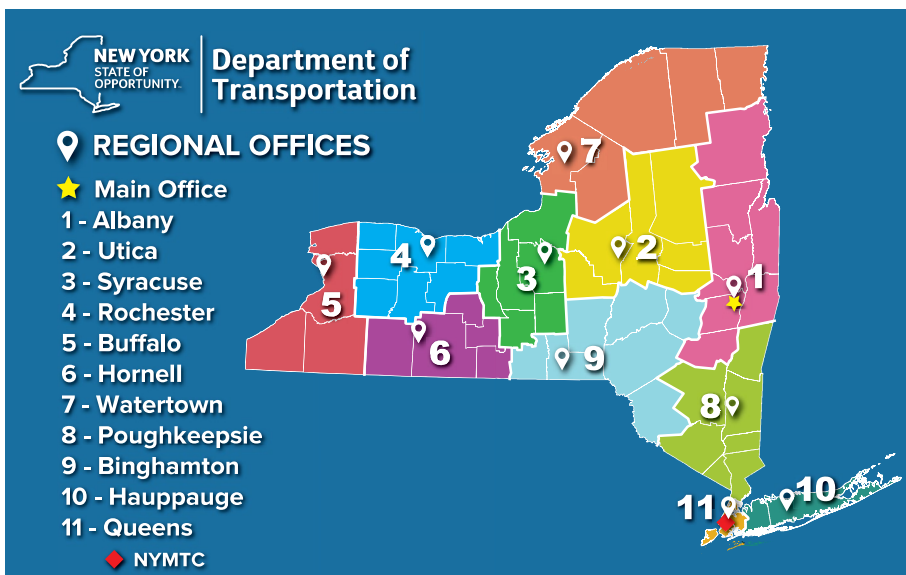
Visit our website: www.ny.gov/dotjobs for an application and more information about our current openings, training opportunities and DOT locations.



Call us: 1-877-DOT-JOB1

Email us: recruitment@dot.ny.gov

50 Wolf Road, Albany, New York 12232



APPLY NOW!

Construct your future with the New York State Department of Transportation

Benefits

Permanent, full-time NYSDOT employees enjoy many benefits

Annual Paid Leave

- 13 vacation days, increasing to 20 days after 7 years
- 5 personal days
- 13 sick days
- 12 paid holidays

Health Insurance

- State pays approximately 85% of individual plans and approximately 70% of family plans
- No cost vision and dental coverage

Retirement

- Employee contribution rate to retirement system based on annual wage
- Defined benefit pension plan determined by total years of service and final average salary

Deferred Compensation Plan:

- Voluntary participation allows employees to contribute tax deferred money for supplemental retirement purposes

Flex Spend Account:

- Voluntary participation allows employees to put money aside, through a pre-tax payroll deduction, for health care costs not reimbursed by health insurance plans, and for eligible dependent care (child care, elder care, or disabled dependent care)

Permanent Employees May Also Qualify For:

- Tuition Reimbursement
- Military Leave
- Paid Jury Duty Leave
- Child Rearing Leave
- Part-time or Reduced Work Schedule
- Compressed Work Schedule

Contact NYSDOT Personnel Bureau:
(518) 457-6460
1-877-DOT-JOB1
recruitment@dot.ny.gov