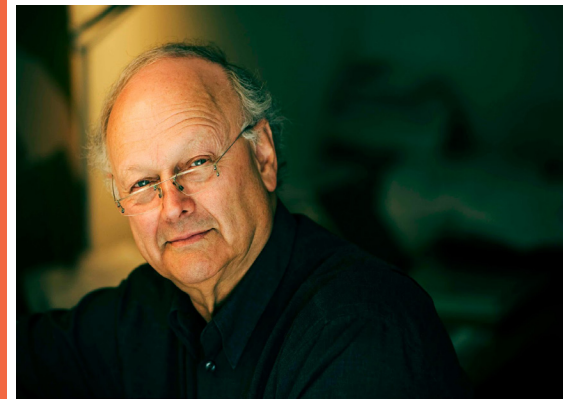
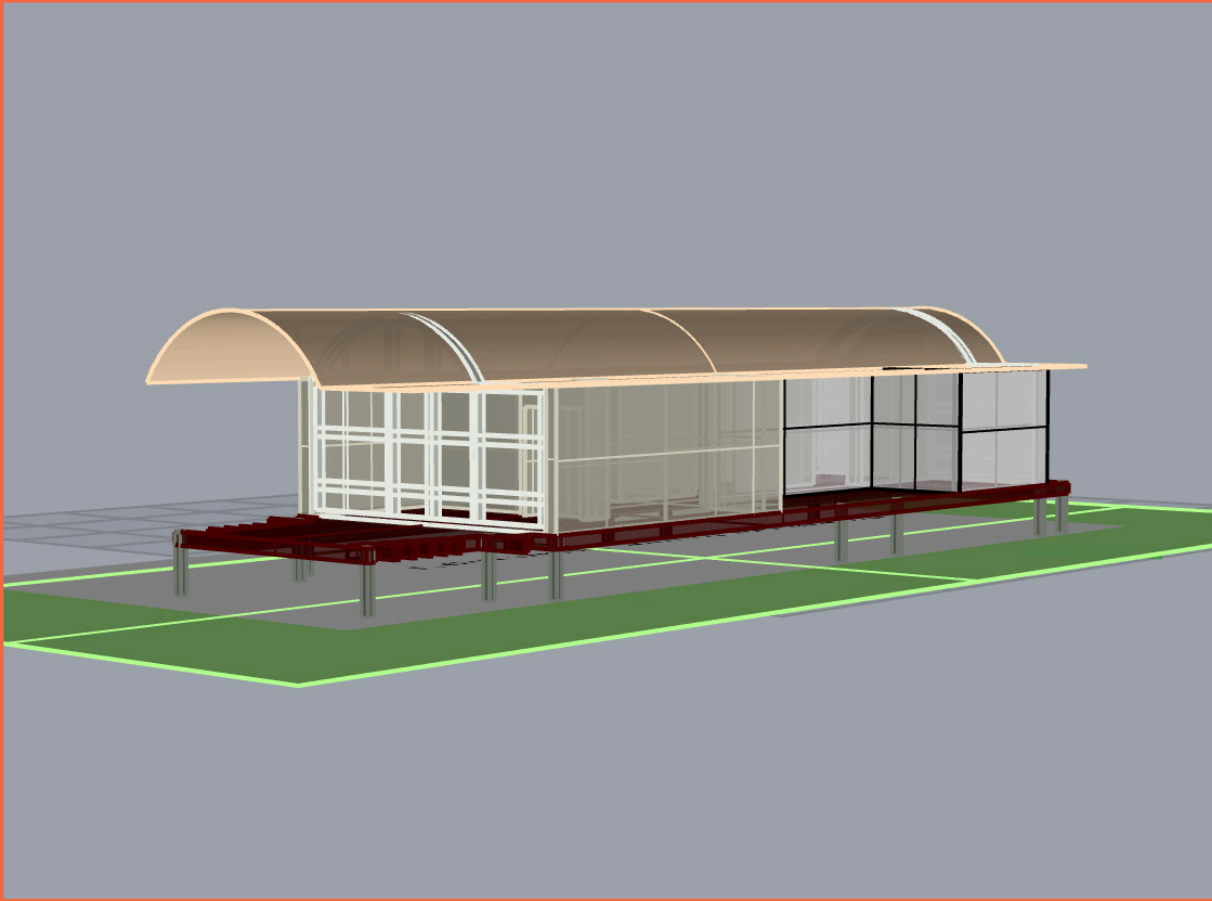


Melissa Sanchez  
Spring 2017  
Design 3  
Prof. Severn Clay



The Ball Eastaway House by  
Glenn Murcutt  
Built in: 1980-1983  
Located in Glenorie, Australia  
(North of Sydney)

This house is located in the woods, near a river due to this conditions the house stands in top of beams to allow the water to go under the house when the river overflows.

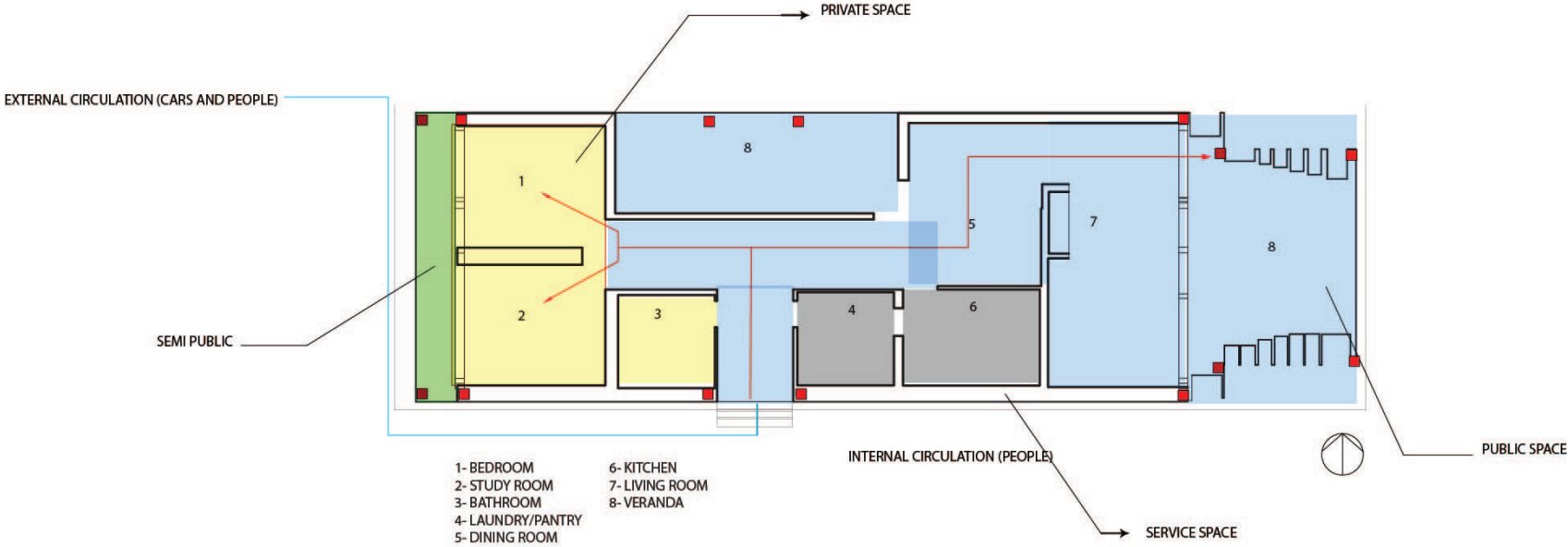
Some of the Materials utilized in the making of this house were:

- steel
- wood
- plaster board

The House was designed for 2 painters and it was meant to serve as home, art gallery and recreation spot for other artist.

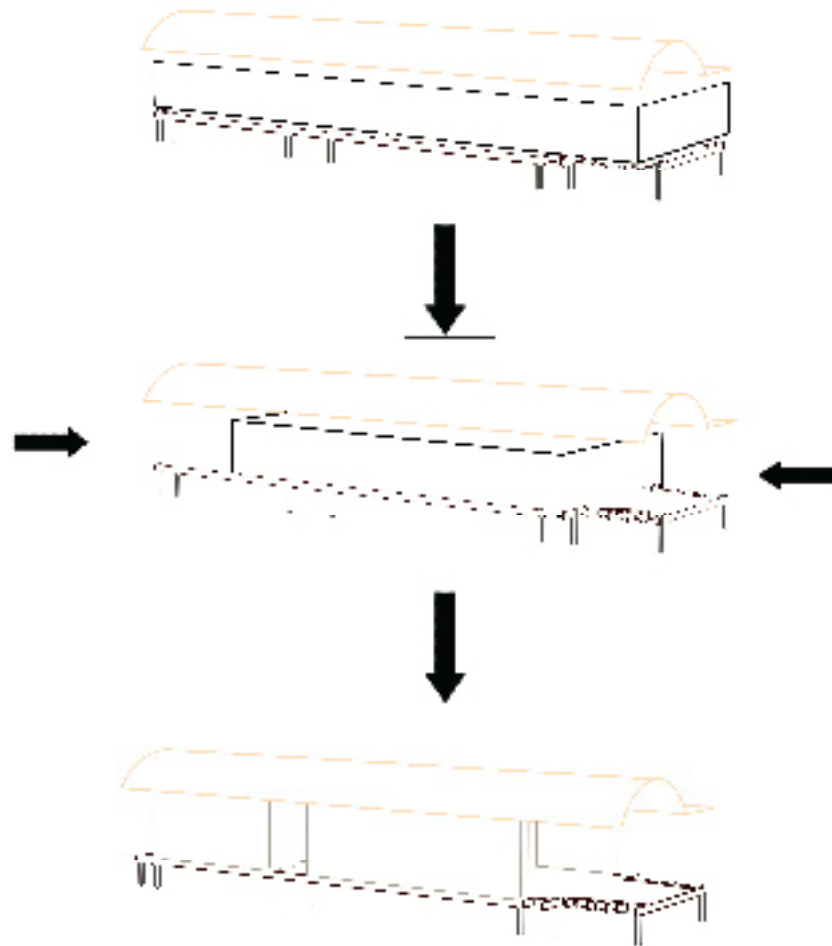
# BALL EASTAWAY HOUSE

BY GLENN MURCUTT

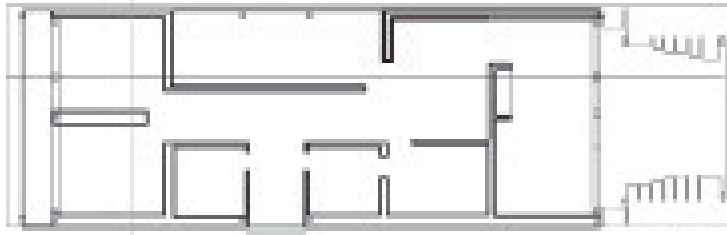


# Massing Diagram

Ball Eastaway House By Glenn Murcutt



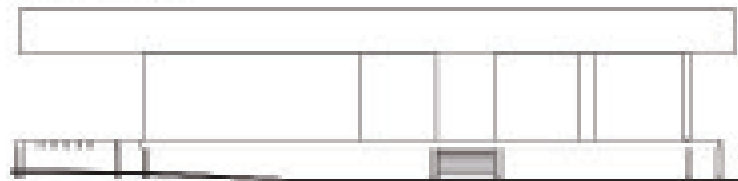
FLOOR PLAN



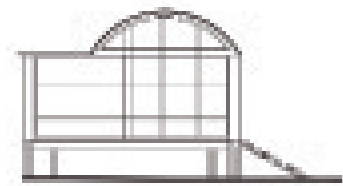
FRONT ELEVATION



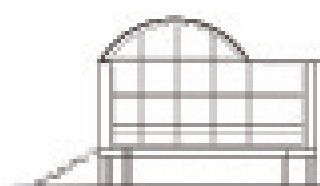
BACK ELEVATION



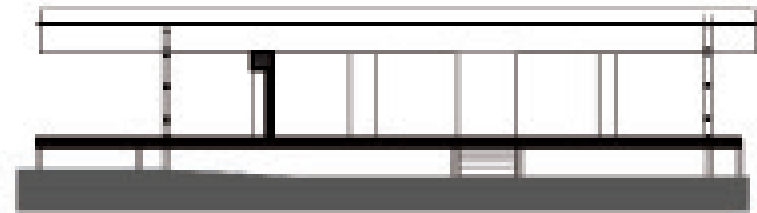
LEFT ELEVATION



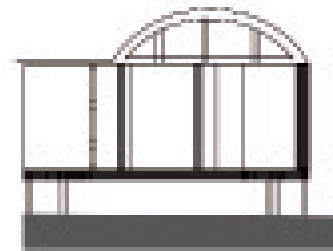
RIGHT ELEVATION



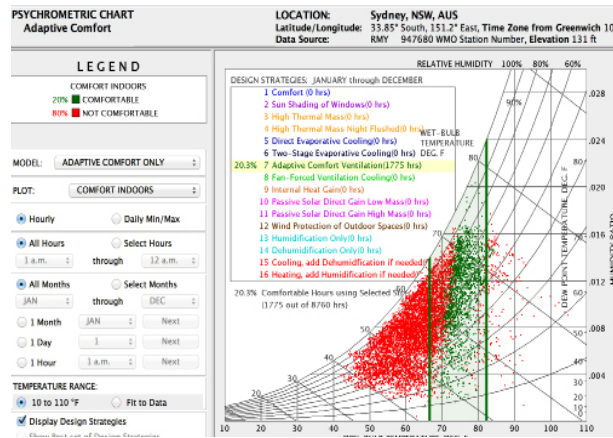
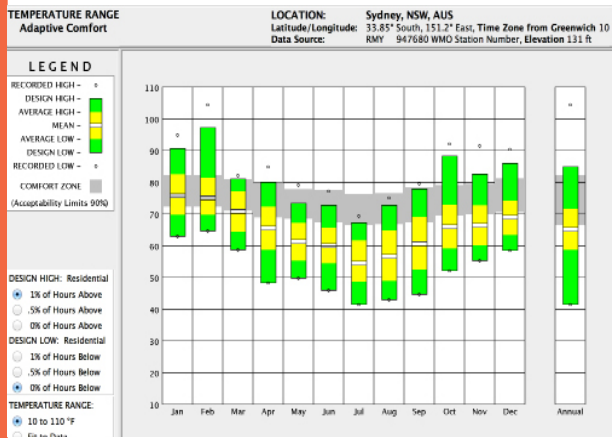
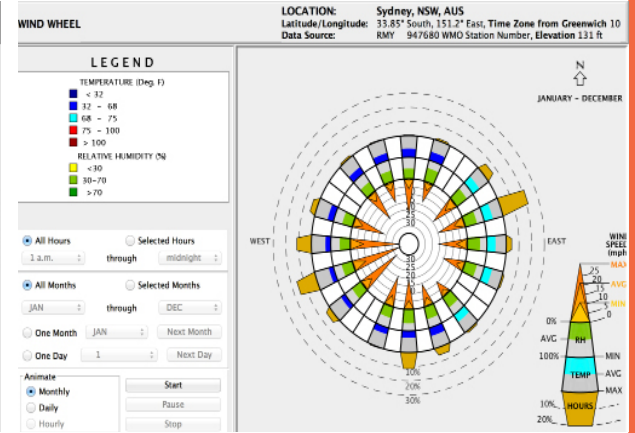
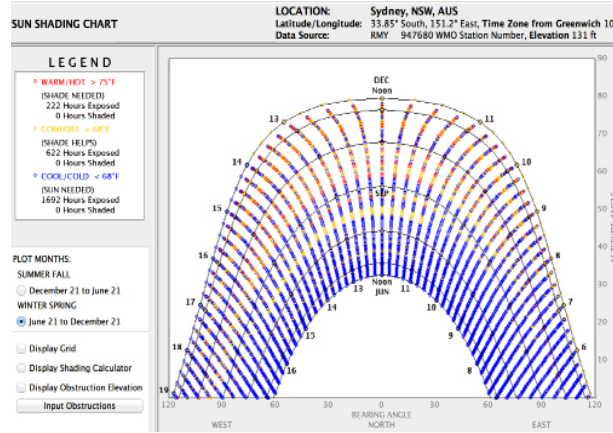
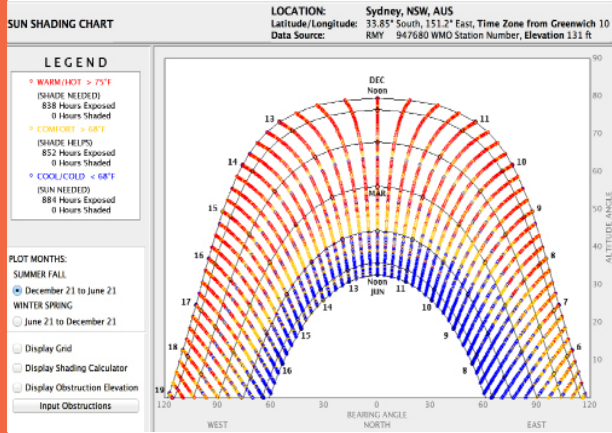
SECTION A



SECTION B



# Climate Consultant Data



# Interior Perspective

