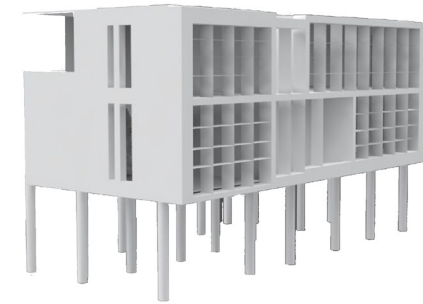


Loblolly House

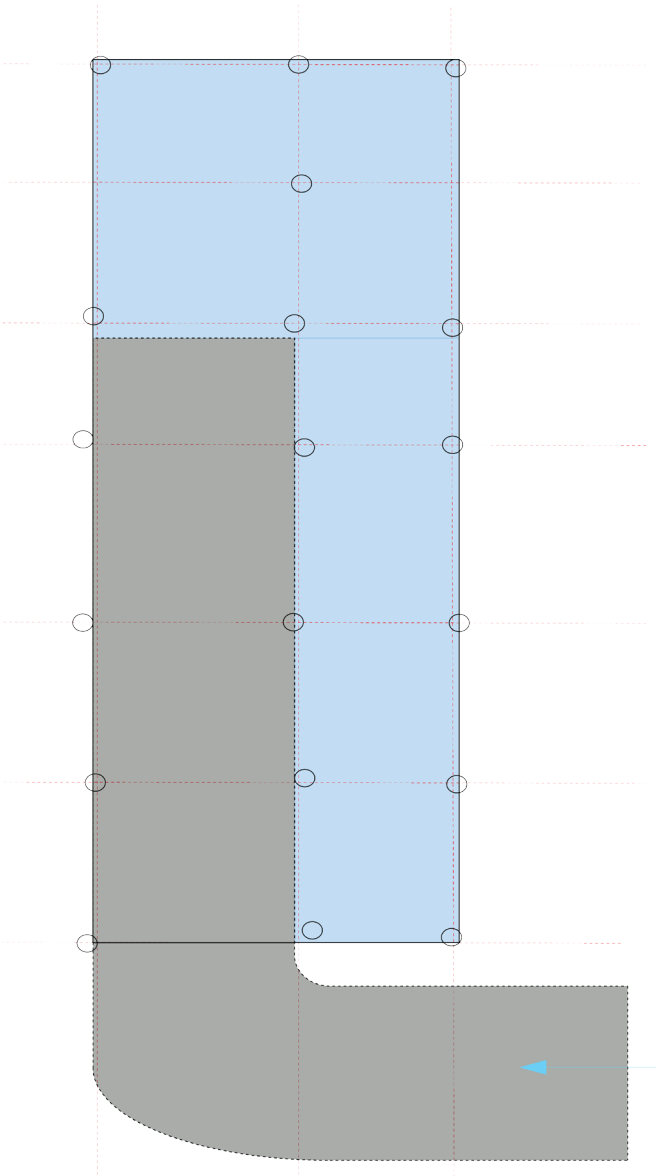
Chesapeake bay, Maryland

Architect: Kieran Timberlake

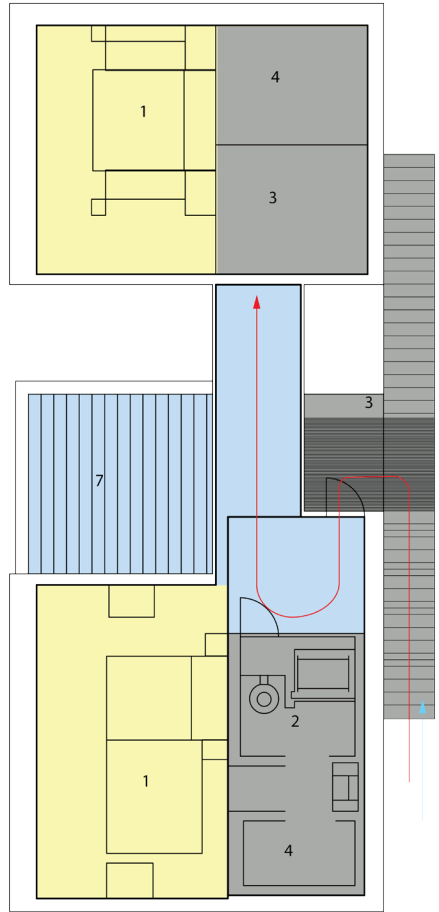


Closely studied before cutting the Loblolly house was built in weeks. Using pre fabricated parts Timberlake managed to cut down of the time in the job site and running into problems that occur at your usual job site. They aimed to create a house using only simple hand tools. Most parts were pre assembled off site like the bathrooms and kitchen and floor, they all came with wires and pipes installed. The conception and detailing revolved around four new elements of architecture. Scaffold, cartridges, blocks and equipment. They used high tolerance product like bosh aluminum strut to hold the house up. After the frame is assembled floor cartages are placed giving the simple installation of wires and pipes running throughout the house The aluminum scaffold used in the building

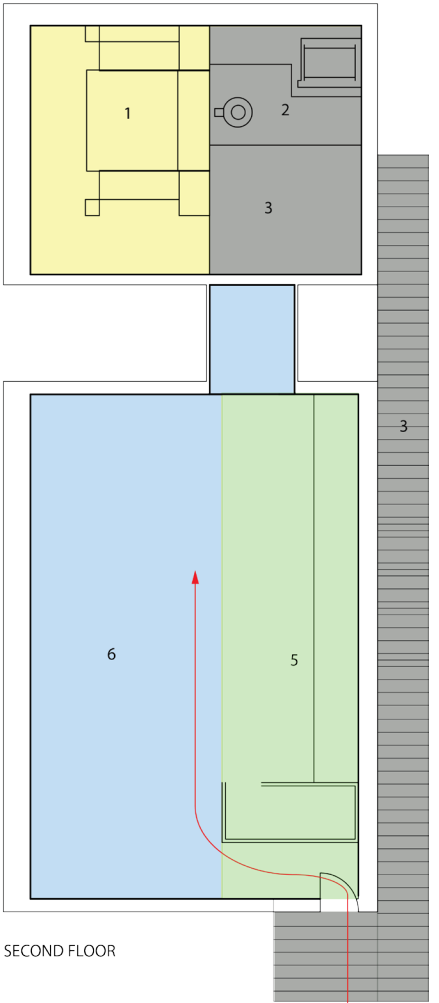
HOUSE PORGRAMS



DRIVEWAY



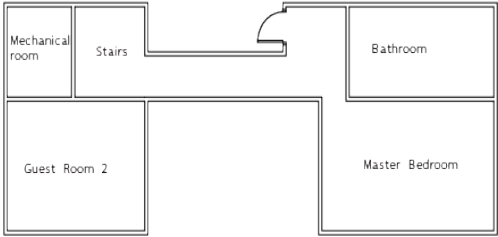
FIRST FLOOR



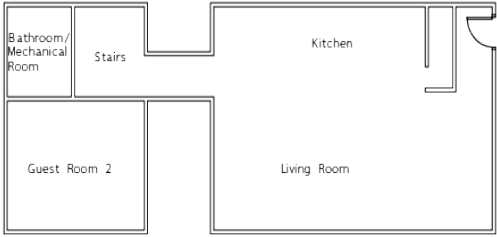
SECOND FLOOR

- 1 BEDROOMS
- 2 BATHROOMS
- 3 STAIRS
- 4 MECHANICAL ROOMS
- 5 KITCHEN
- 6 LIVING ROOM
- 7 BALCONY

MASSING DIAGRAM AND FLOOR PLANS



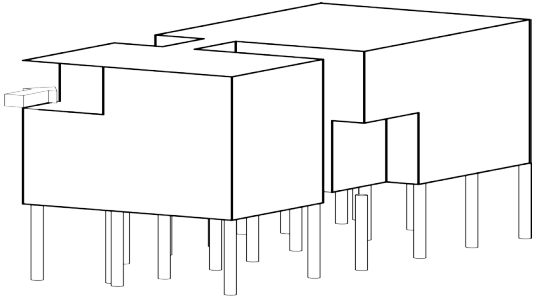
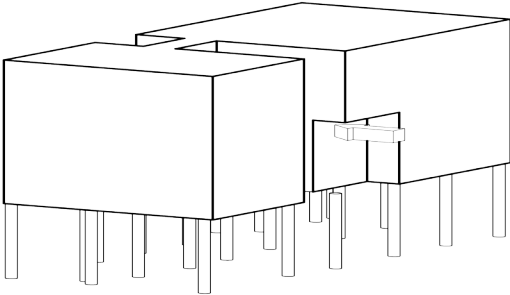
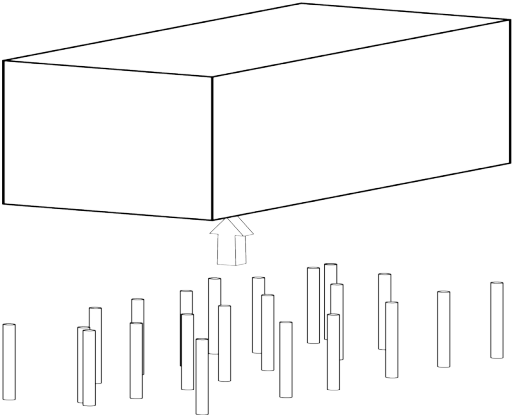
First Floor Plan



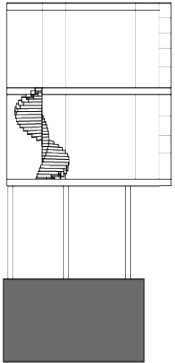
Second Floor Plan



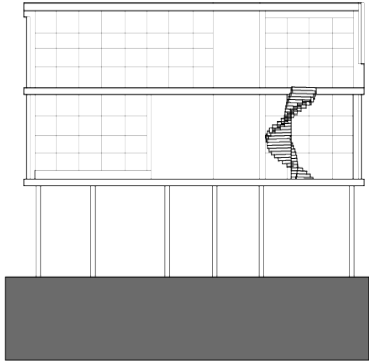
Column Plan



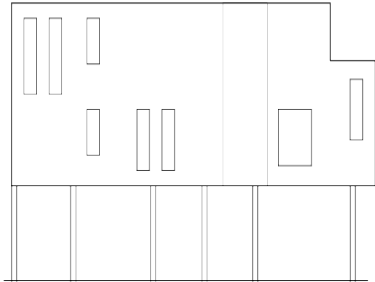
ELEVATIONS



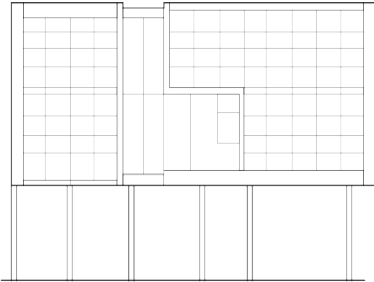
Cross Section



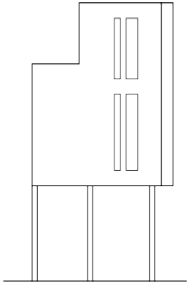
Longitudinal Section



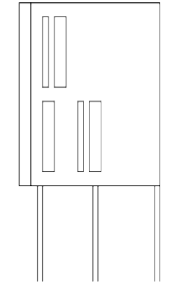
South Elevation



North Elevation



East Elevation



West elevation

CLIMATE CONSULTANT

