

Le Corbusier Maison Cook

Built in 1926

Located in Boulogne-sur-Siène, France

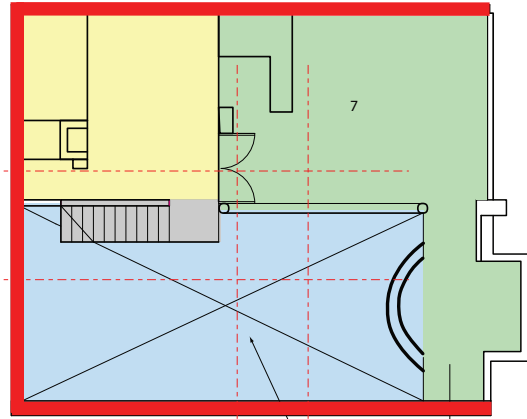
Le Corbusier's first piece to present his five points of architecture. Pilotis: It was built to have the support the structure without the need of big walls. Free Facade: The facade has different distributions, and more

Free Plan: The distributions in plan of the different floors are different between one another, because the walls are simply partitions, and they are not supporting any weight.

Ribbon Windows: Big openings in the facades, to let in natural light and ventilation  
Roof Garden: He believed that nature should be always present in architecture.

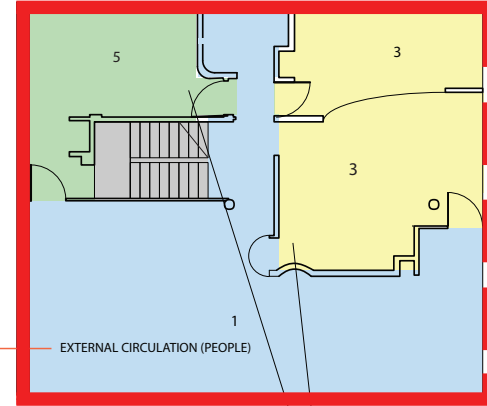
# CIRCULATION/SPACIAL/STRUC-TURAL DIAGRAMS

## Maison Cook Floor Plans



Terrace

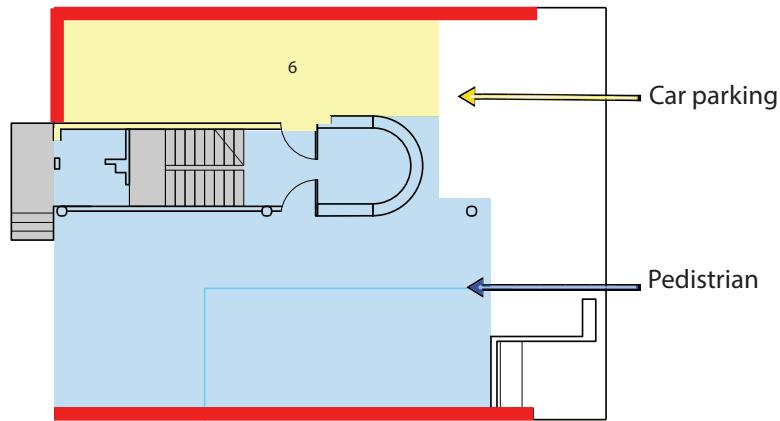
SEMI-PUBLIC SPACE (GREEN)  
PUBLIC SPACE (BLUE)



Second Floor Plan

EXTERNAL CIRCULATION (PEOPLE)

PRIVATE SPACE (YELLOW)  
SEMI-PUBLIC SPACE (GREEN)



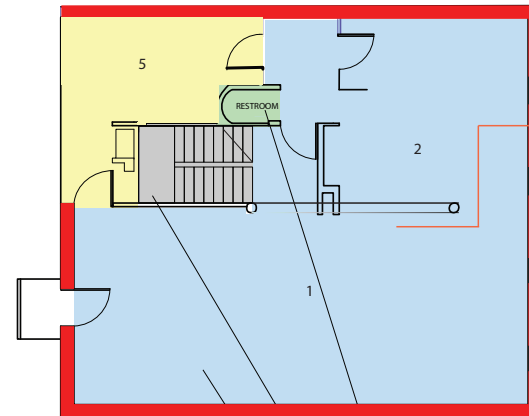
Entrance

- 1. LIVING ROOM
- 2. DINING ROOM
- 3. BEDROOM
- 4. RESTROOM
- 5. KITCHEN
- 6. PARKING LOT
- 7. TERRACE

EXTERNAL CIRCULATION (CARS AND PEOPLE)

Car parking

Pedestrian

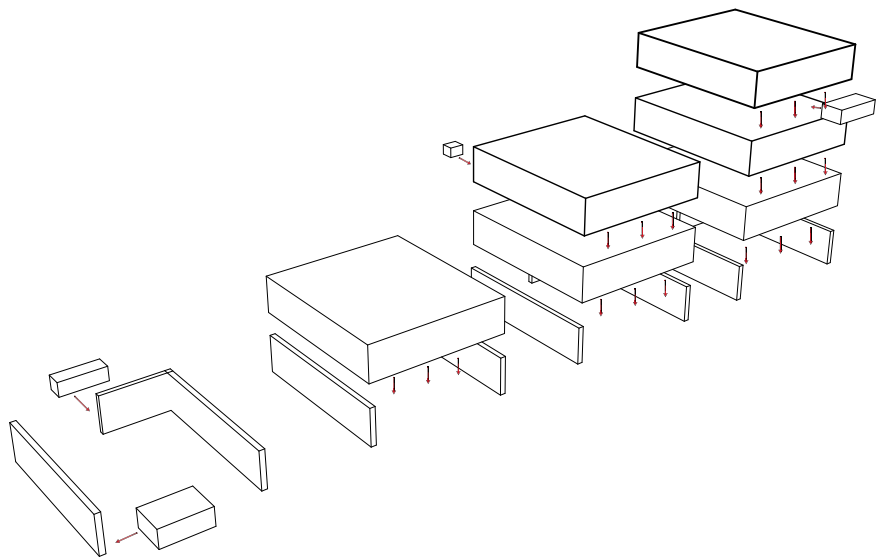


First Floor Plan

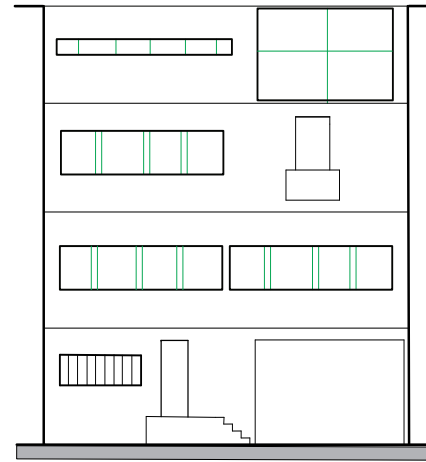
INTERNAL CIRCULATION (PEOPLE)

SEMI-PUBLIC SPACE (GREEN)  
SERVICE SPACE (GRAY)  
PUBLIC SPACE (BLUE)

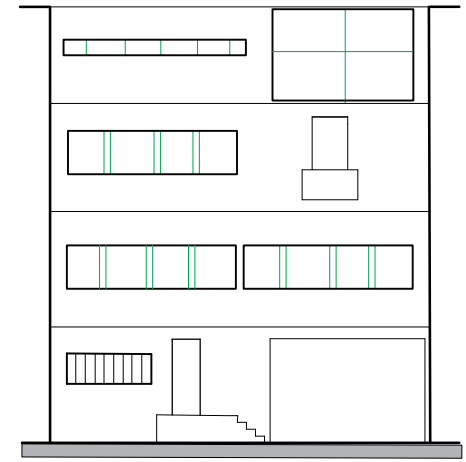
# MASSING DIAGRAM



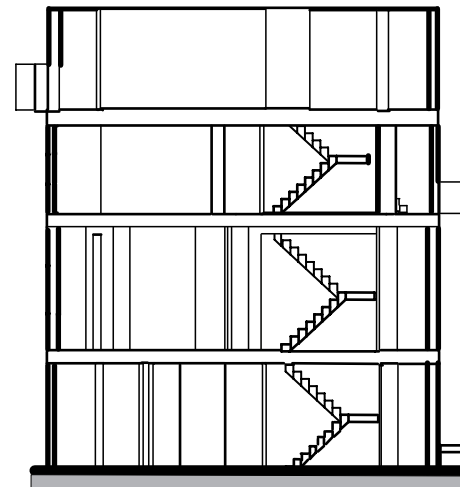
# 2D DRAWINGS



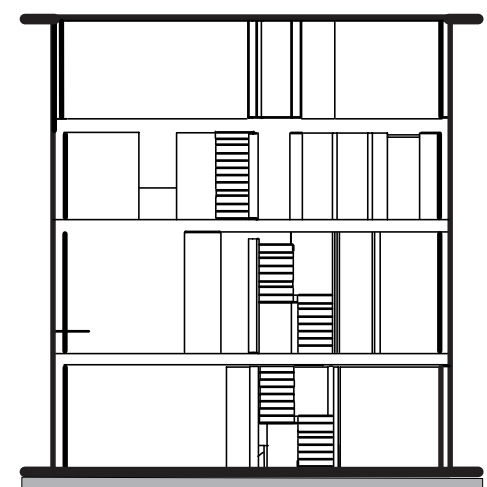
Front Elevation



Back Elevation

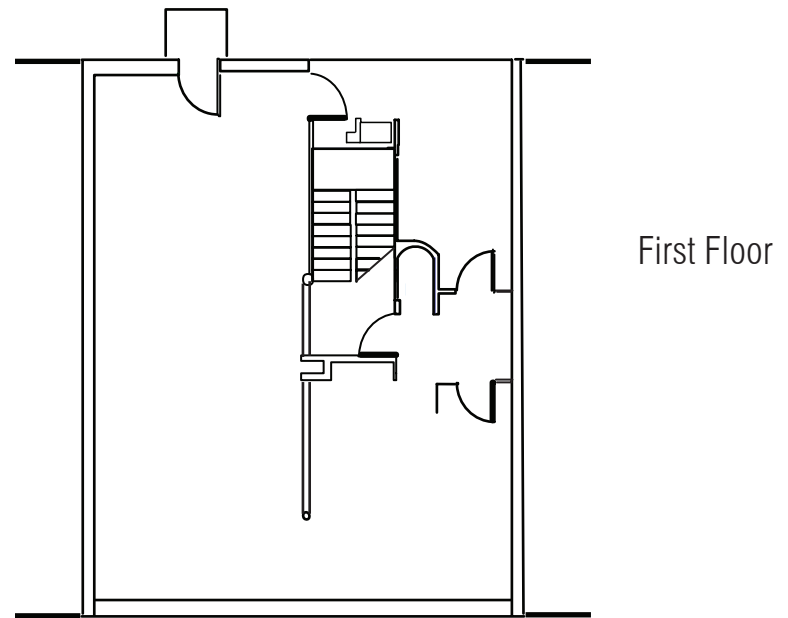
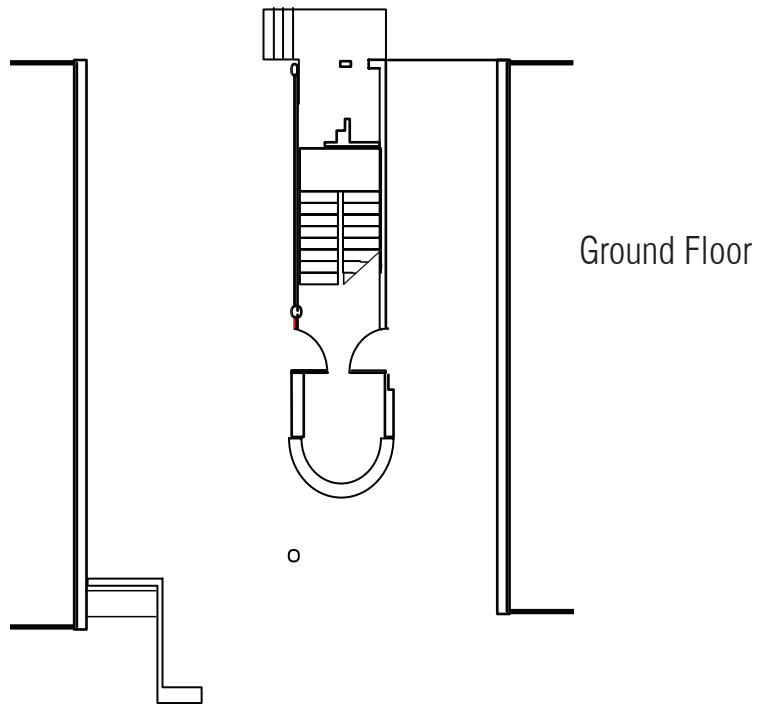
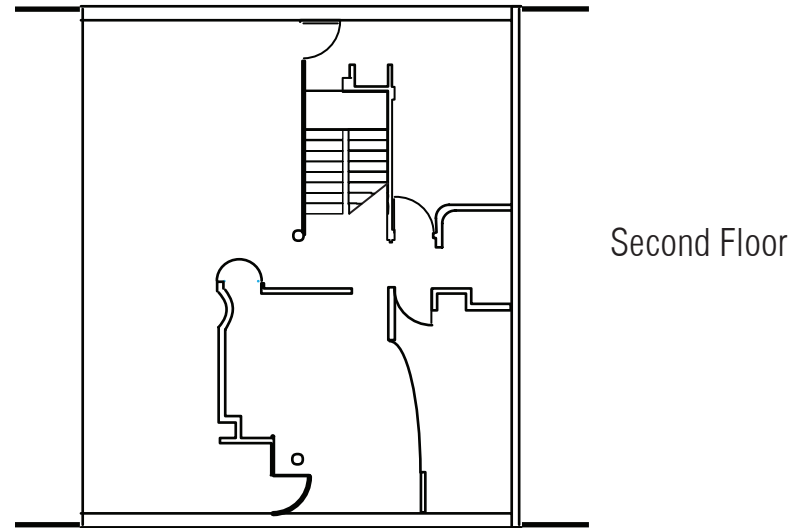
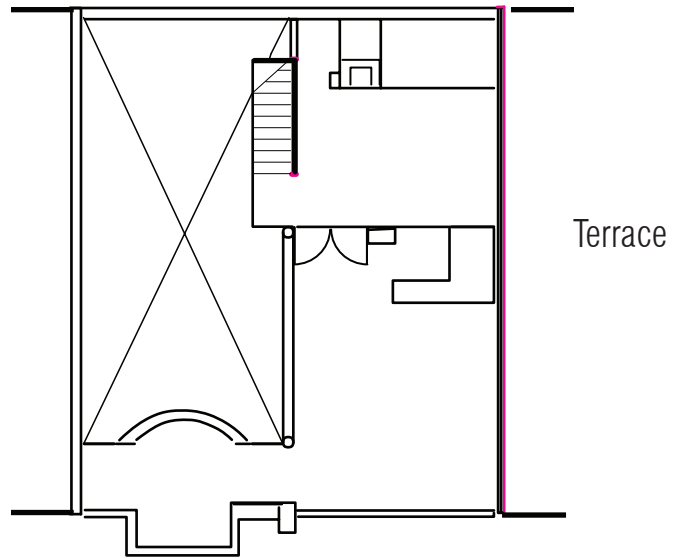


Long Section

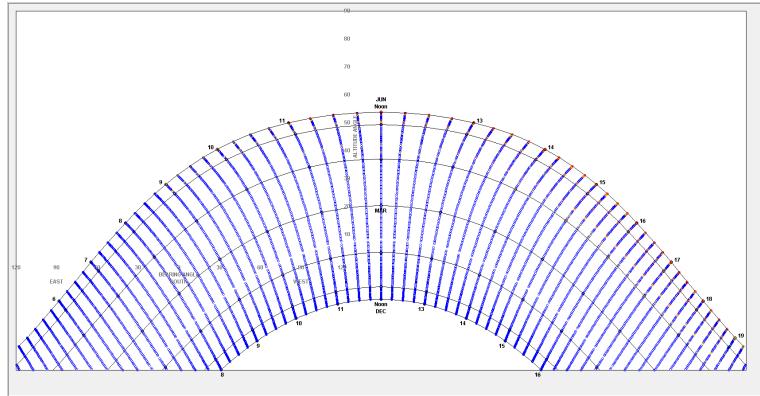


Short Section

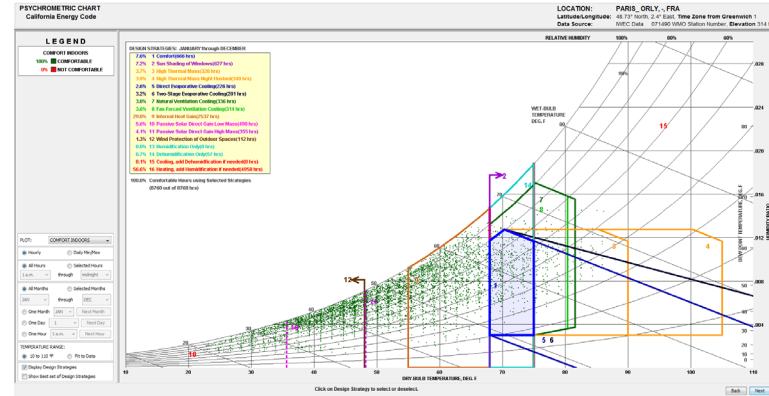
## 2D DRAWINGS



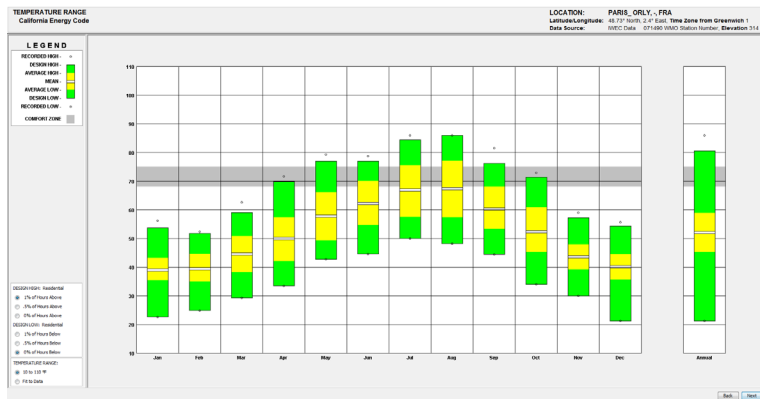
# CLIMATE CONSULTANT



Sun Shading winter Time

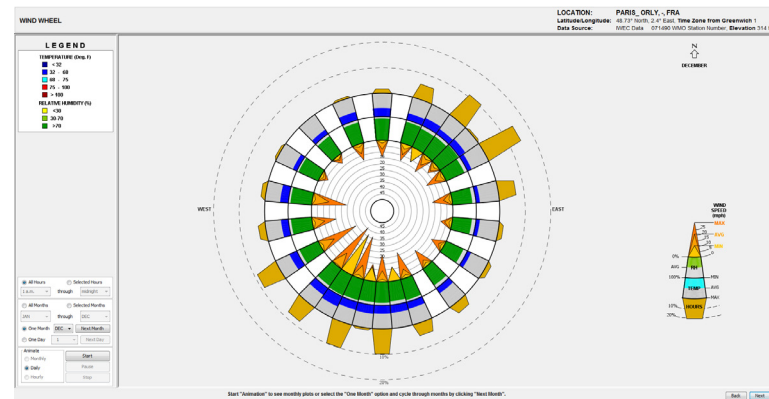


Psychrometric Chart Psychrometric Chart

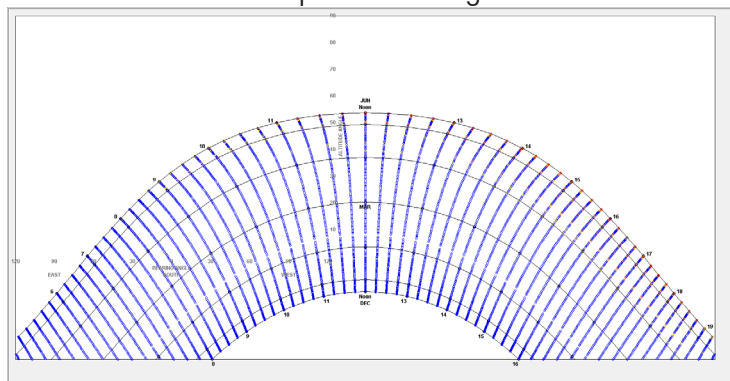


Temperature Range

DATA



Wind Wheel



Sun Shading Summer Time

# INTERIOR PERSPECTIVES

