

TWA TERMINAL AT JFK AIRPORT

DESIGNED BY ARCHITECT EERO SAARINEN IN 1956, THE TERMINAL IS BEST KNOWN FOR ITS CAVERNOUS, ARCHED WHITE CEILINGS AND MID-CENTURY MOD STYLE.

TWA COMMISSIONED SAARINEN TO CREATE A SPACE THAT EMBODIED THE SPIRIT OF FLYING. CURVED LINES AND WING-LIKE STRUCTURES IMITATE A BIRD'S MOVEMENTS.

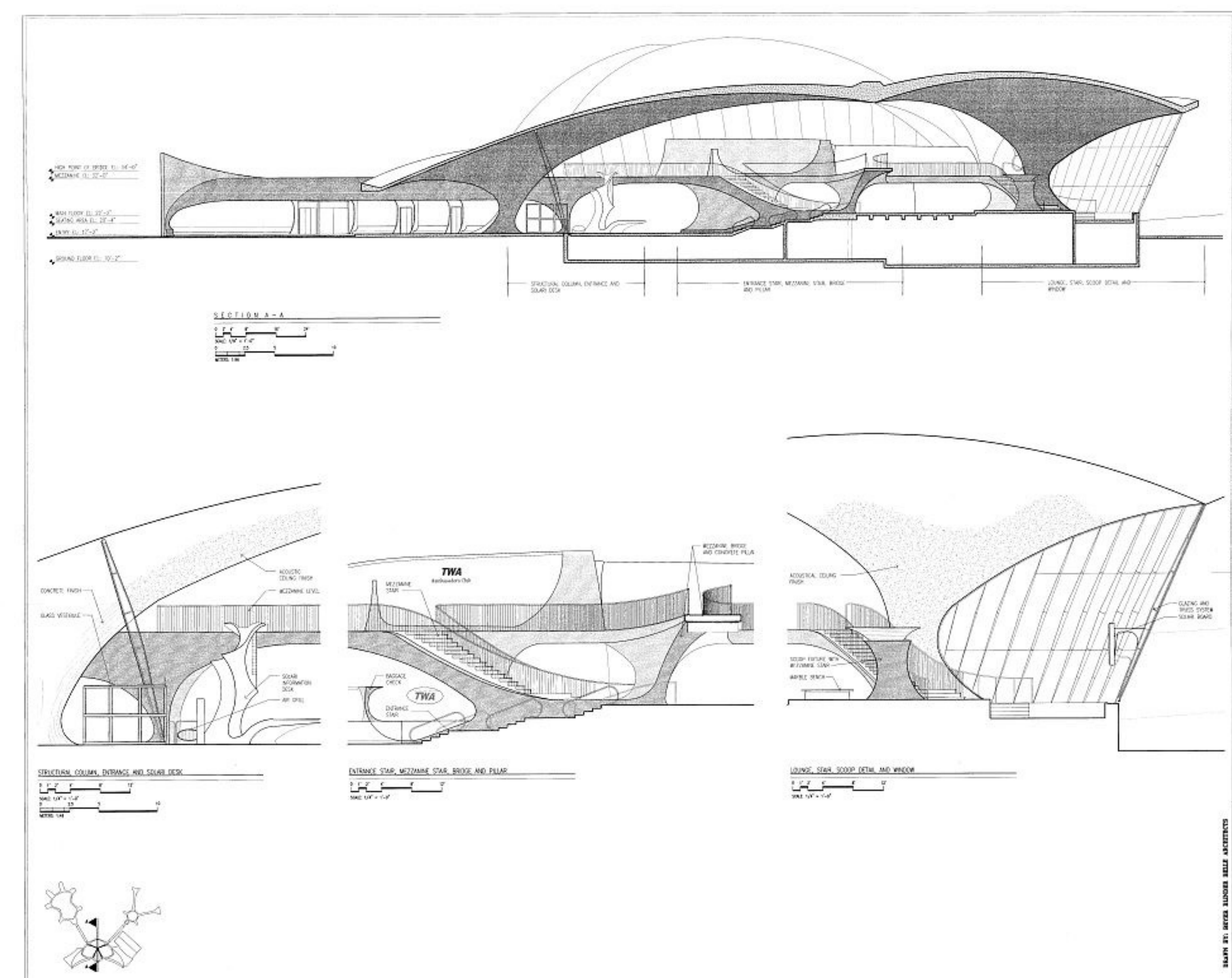
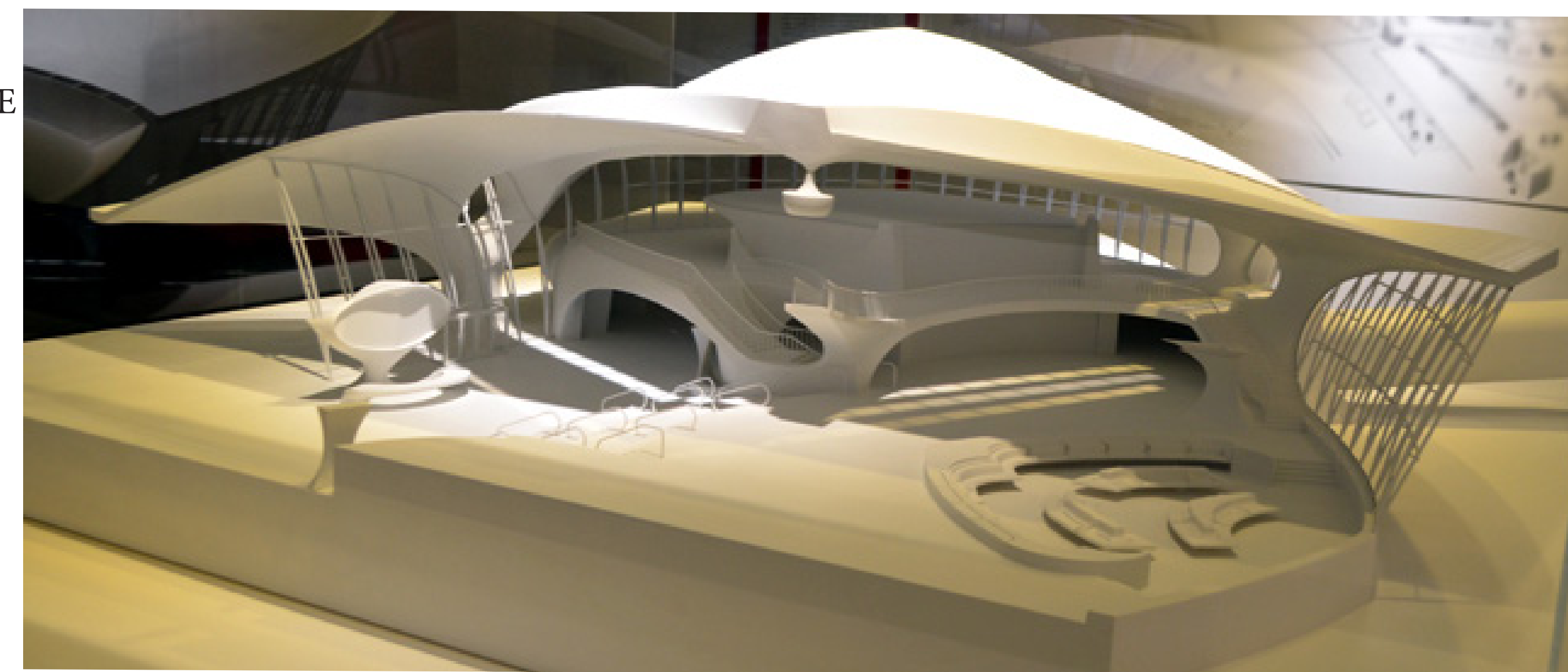
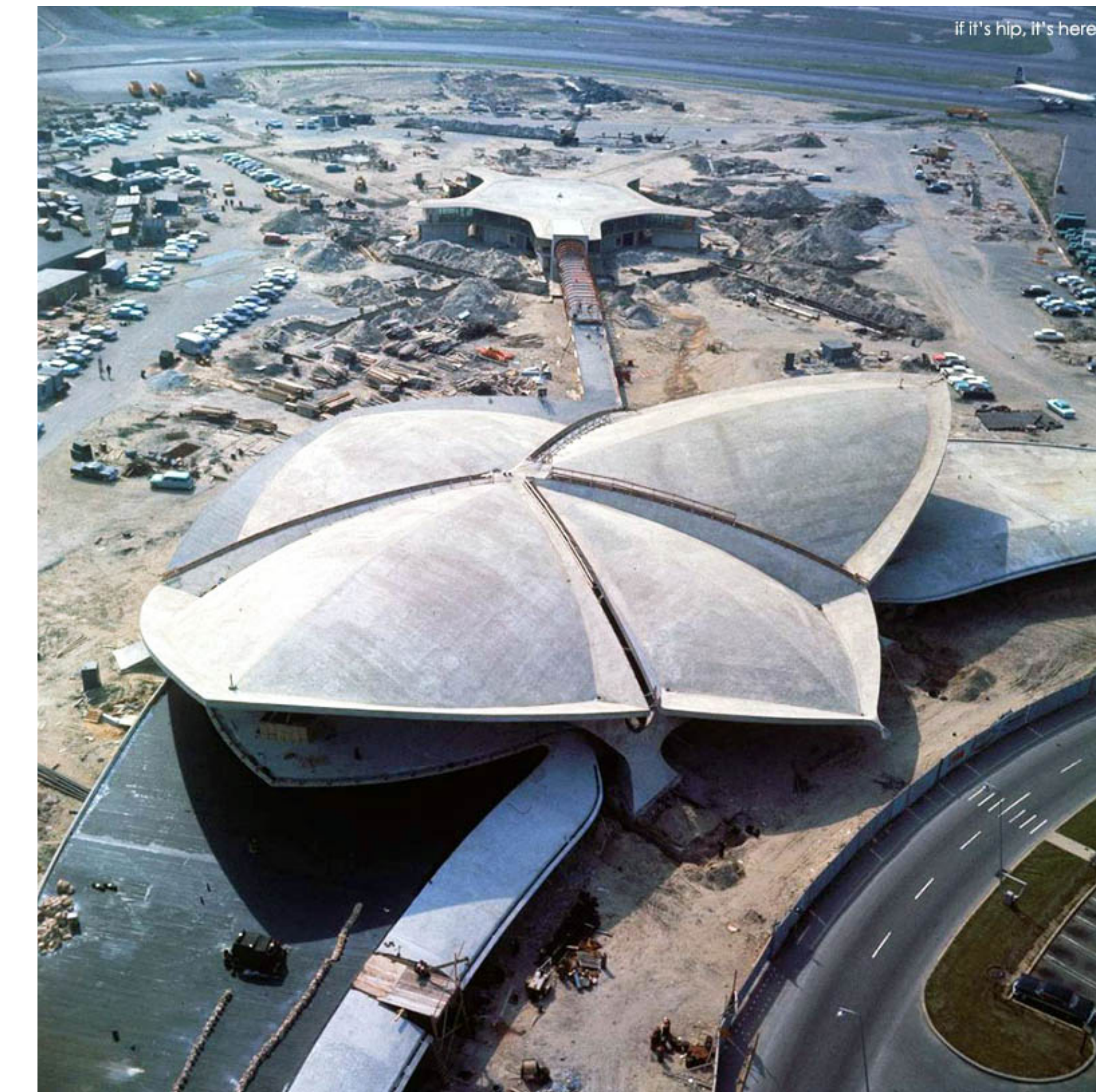
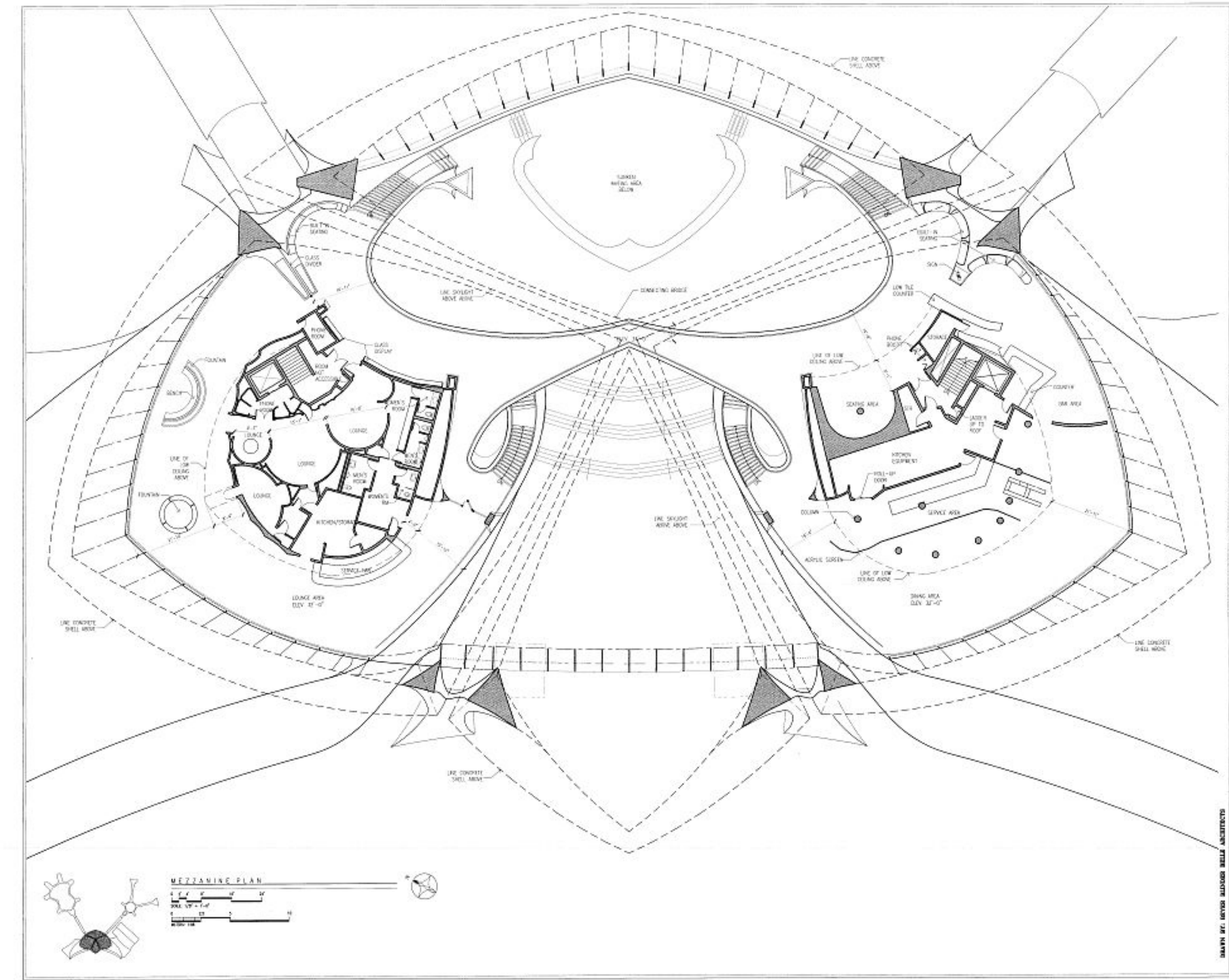
"WE WANTED THE ARCHITECTURE TO REVEAL THE TERMINAL NOT AS A STATIC, ENCLOSED PLACE," SAARINEN SAID IN A LECTURE IN 1959, "BUT AS A PLACE OF MOVEMENT AND TRANSITION."

CRITICS NOTE THAT THE TERMINAL'S DESIGN PRIORITIZES PASSENGERS AS MUCH AS AESTHETICS. FADED, PLUSH RED COUCHES FACE OUTSIDE SO FLIERS CAN WATCH PLANES LAND AND TAKE OFF.

IN ORDER TO CAPTURE THE CONCEPT OF FLIGHT, SAARINEN USED CURVES TO CREATE SPACES THAT FLOWED INTO ONE ANOTHER. THE EXTERIOR'S CONCRETE ROOF IMITATES A BIRD IN FLIGHT WITH TWO MASSIVE "WINGS." THE INTERIOR CONSISTS OF A CONTINUOUS RIBBON OF ELEMENTS, ALL WHISKING THEMSELVES IN FROM THE EXTERIOR, SO THAT CEILINGS CONTINUOUSLY RUN INTO WALLS AND THOSE WALLS BECOME FLOORS.

"ALL THE CURVES, ALL THE SPACES AND ELEMENTS RIGHT DOWN TO THE SHAPE OF THE SIGNS, DISPLAY BOARDS, RAILINGS AND CHECK-IN DESKS WERE TO BE OF A MATCHING NATURE. WE WANTED PASSENGERS PASSING THROUGH THE BUILDING TO EXPERIENCE A FULLY-DESIGNED ENVIRONMENT, IN WHICH EACH PART ARISES FROM ANOTHER AND EVERYTHING BELONGS TO THE SAME FORMAL WORLD," STATED EERO SAARINEN DURING CONSTRUCTION IN 1959.

SECTION SECTION THE NATIONAL HISTORIC LANDMARK WILL BE TRANSFORMED INTO A HOTEL AND CONFERENCE CENTER, SCHEDULED TO OPEN IN LATE 2018. THE GUEST ROOMS WILL BE HOUSED IN TWO ADJACENT TOWERS ...



CONCRETE