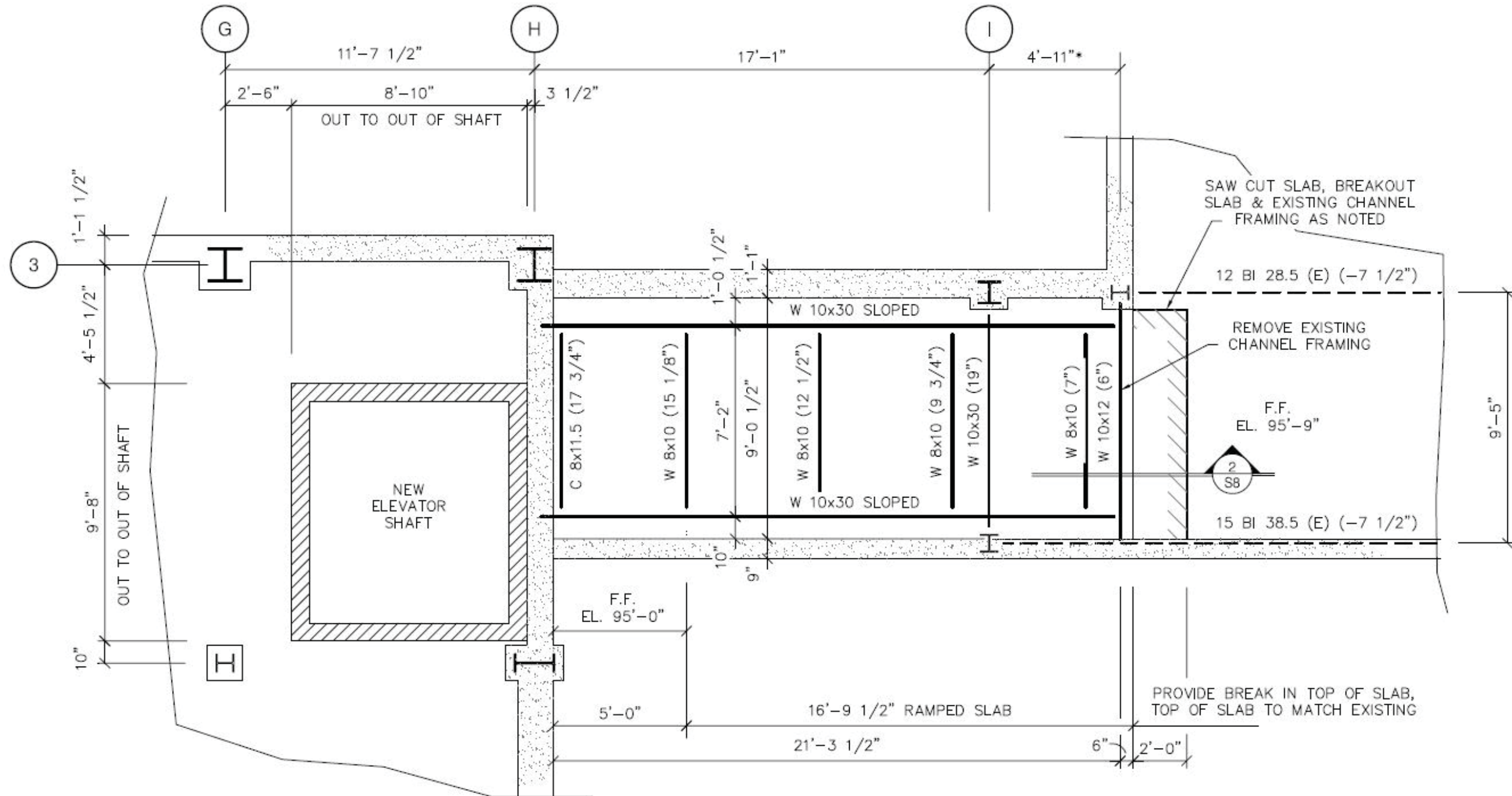


# FRAMING PLANS - NEW RAMP

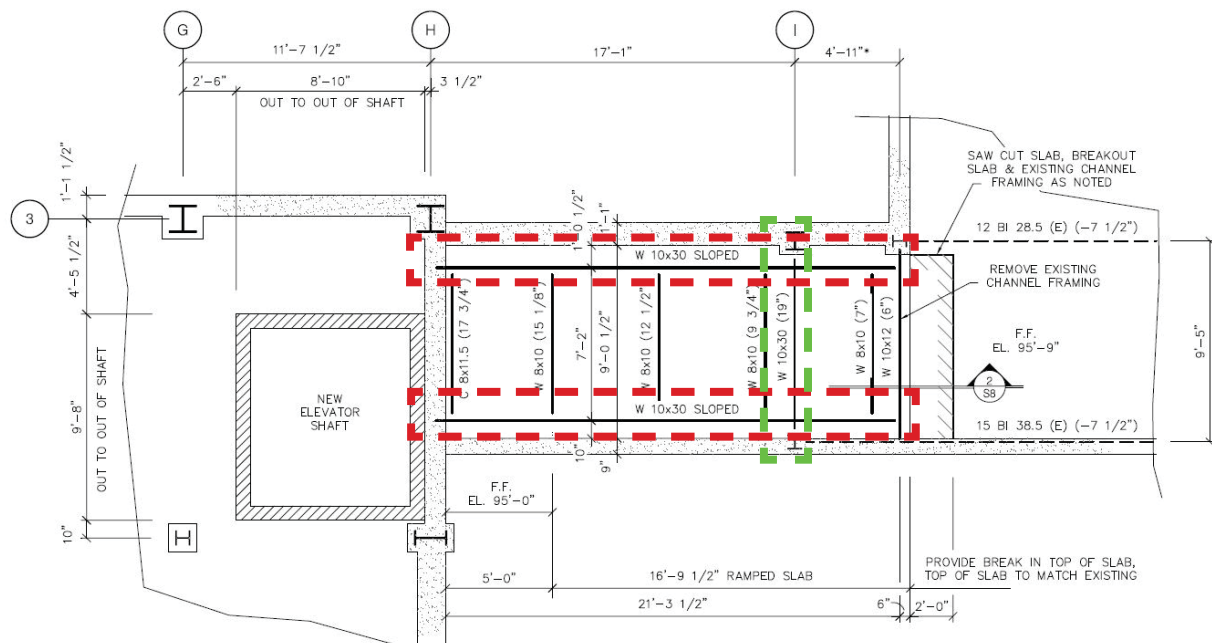
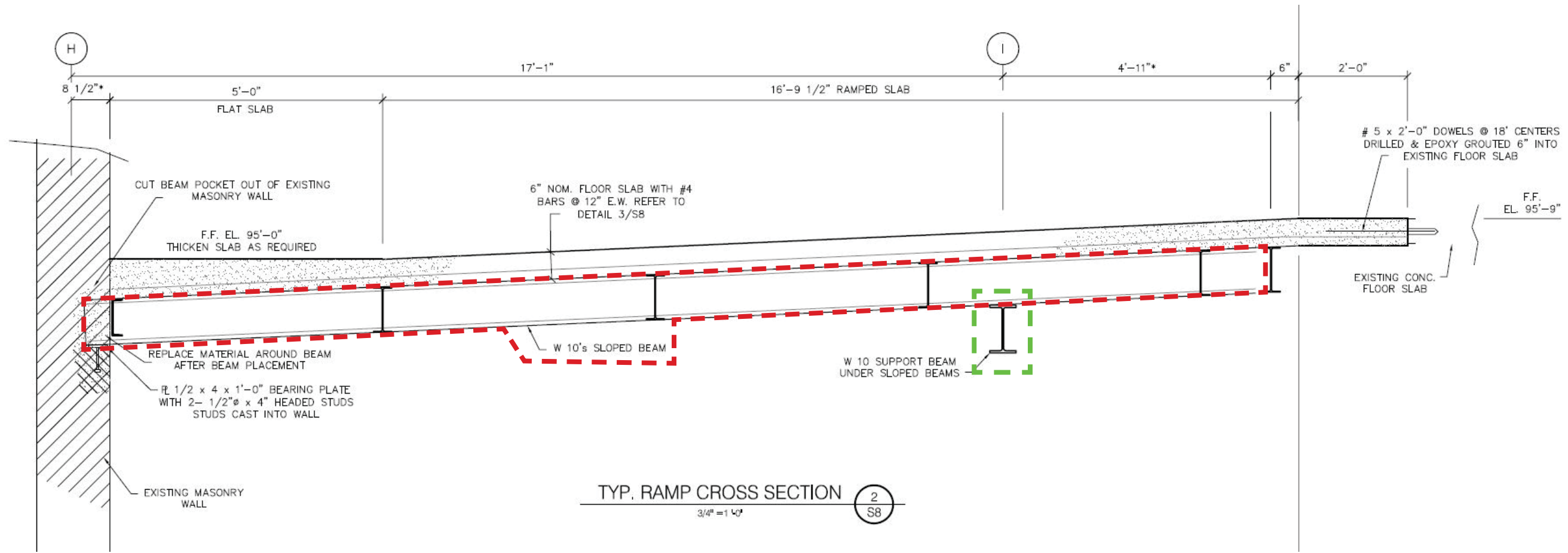


BASEMENT MEZZANINE  
PARTIAL FLOOR PLAN

1/4" = 1'-0"

1  
S8

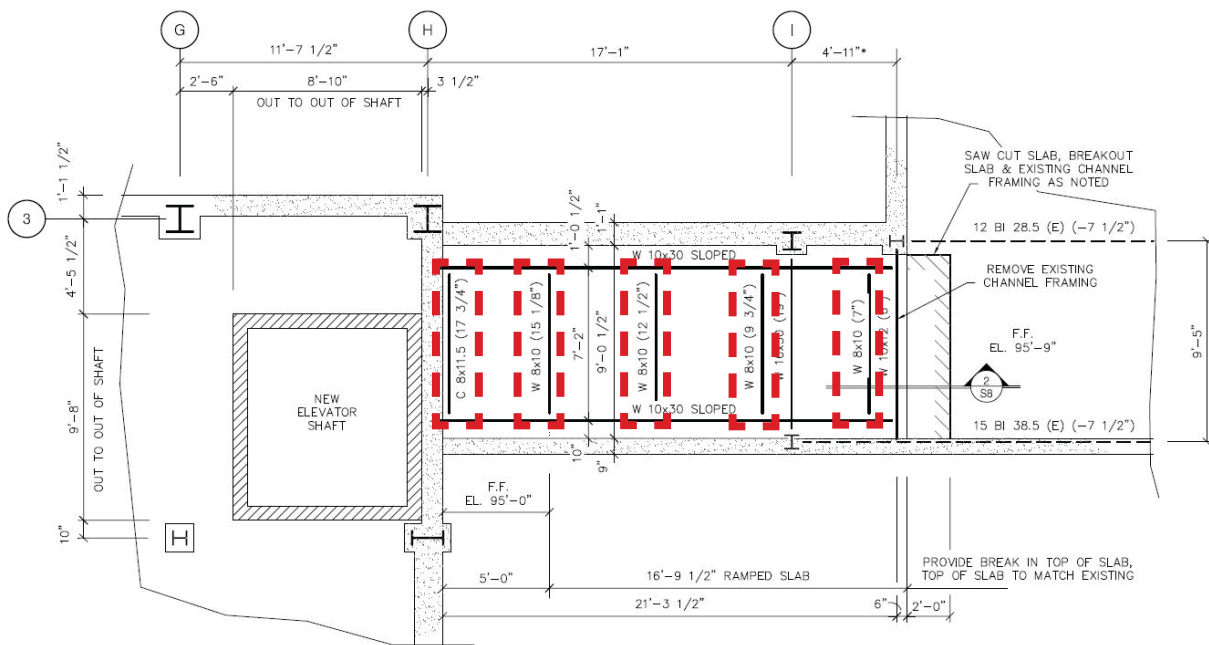
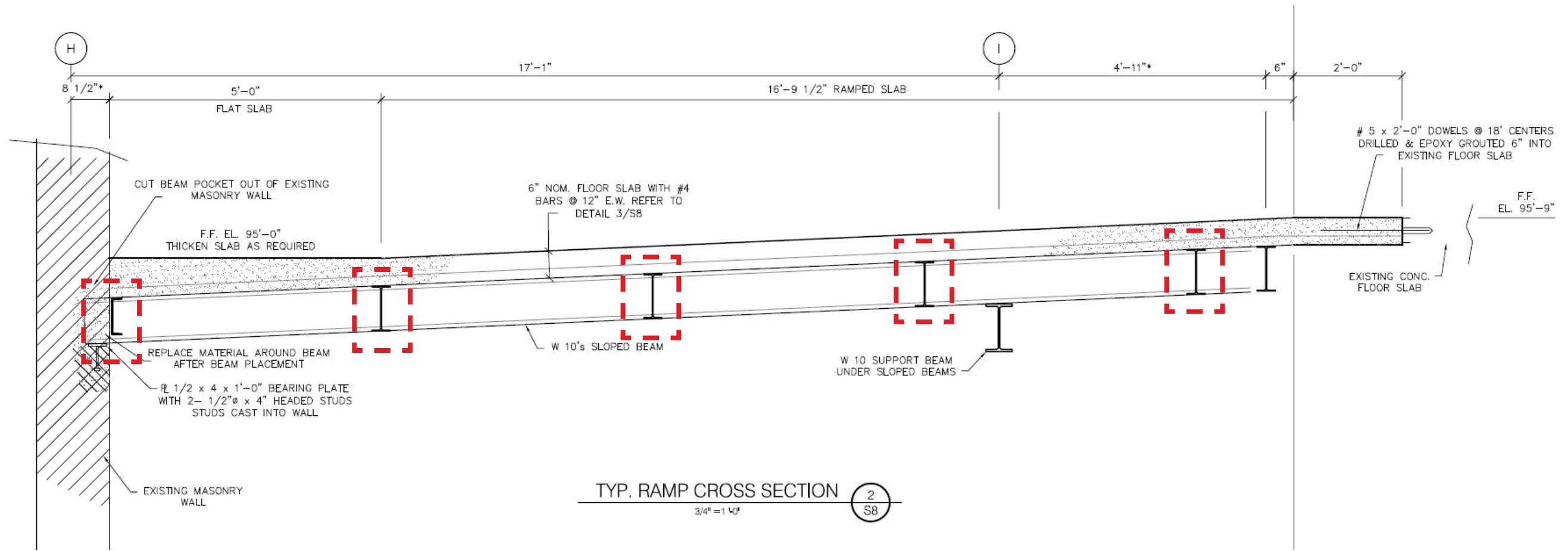
# FRAMING PLANS - NEW RAMP



## GIRDERS:

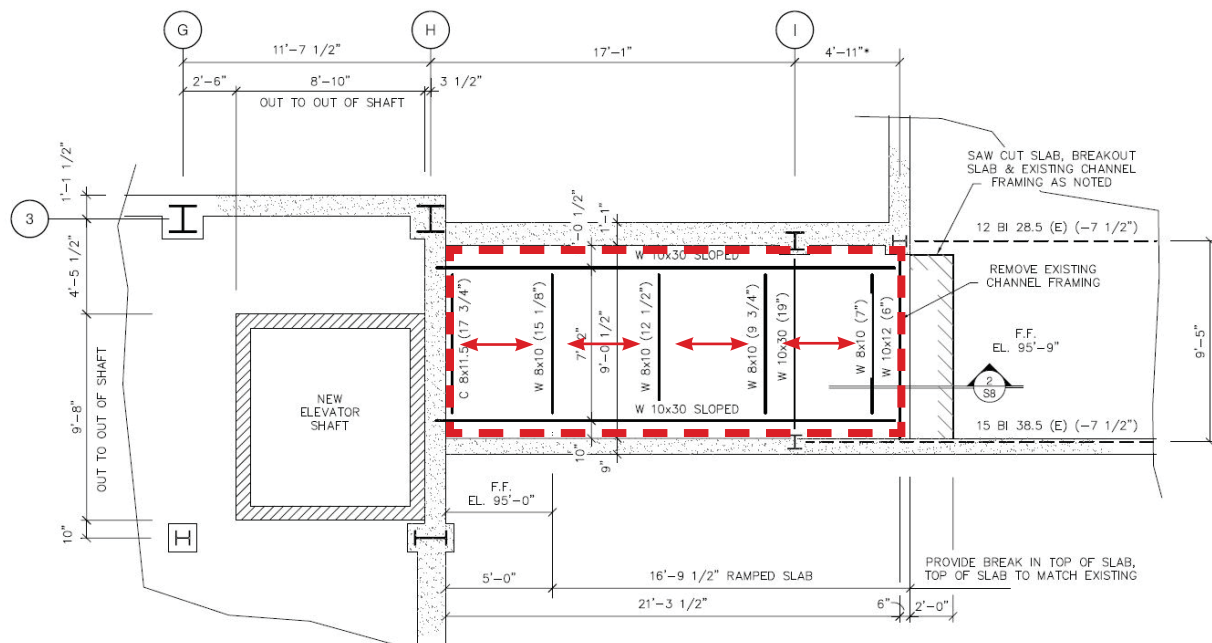
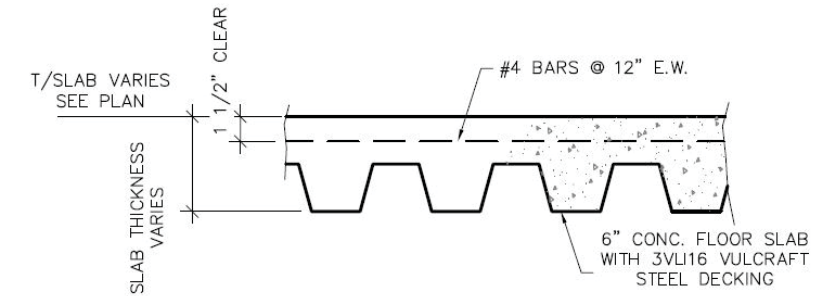
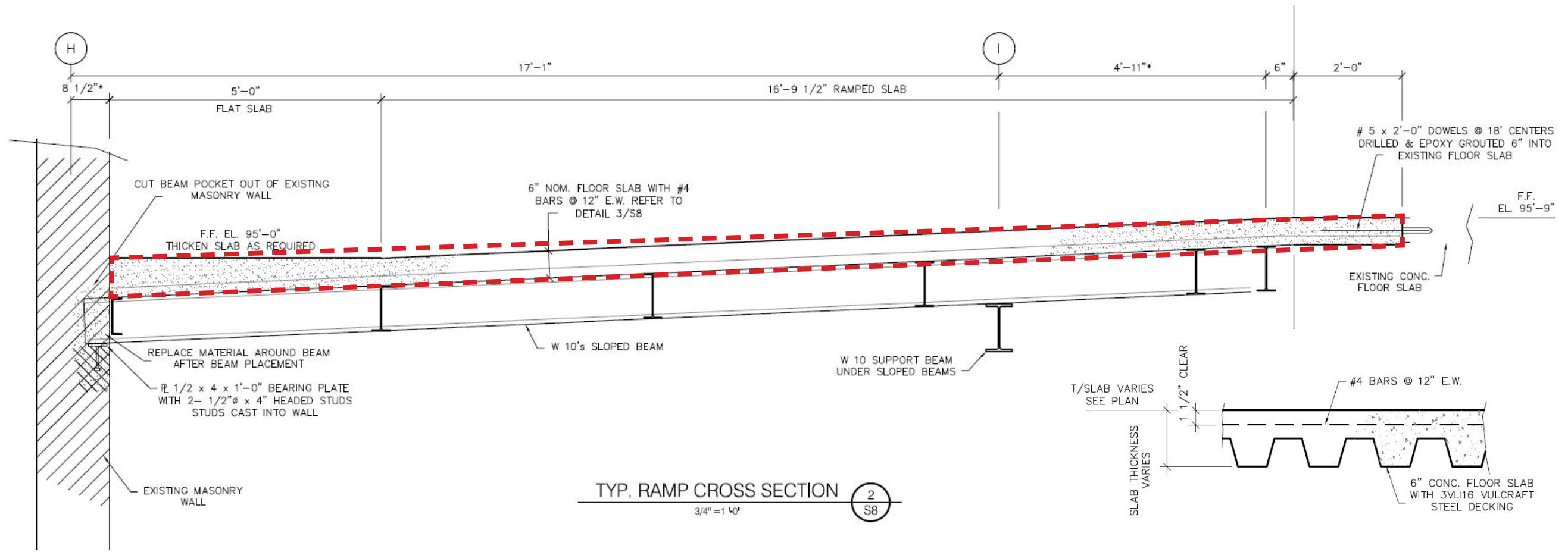
LARGE, PRIMARY STRUCTURAL MEMBERS USED TO SUPPORT THE BEAMS

# FRAMING PLANS - NEW RAMP



**BEAMS:**  
SMALLER, SECONDARY MEMBERS USED TO SUPPORT THE DECKING

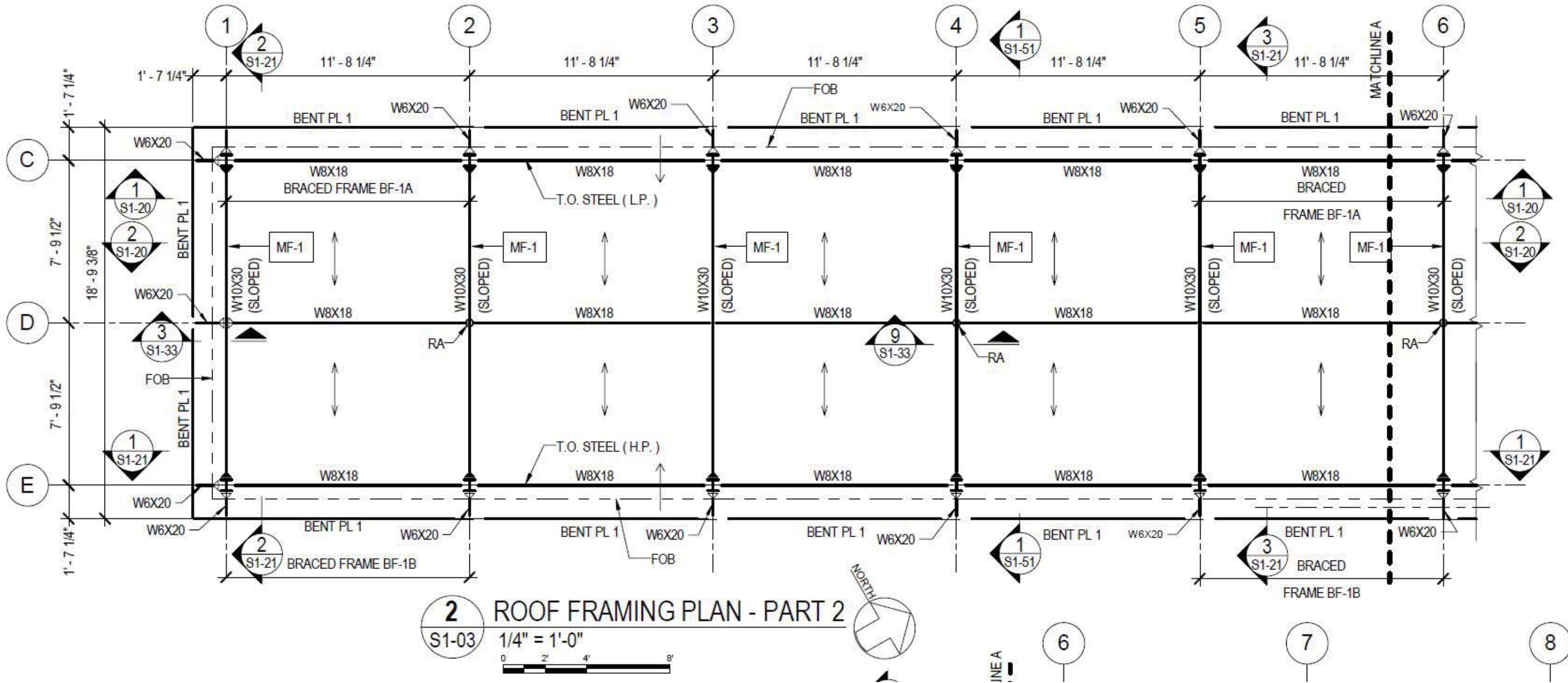
# FRAMING PLANS - NEW RAMP



## DECKING / SLAB:

TOPPING LAYER, SPANS BETWEEN BEAMS AND USED TO CREATE A FLAT WALKABLE SURFACE

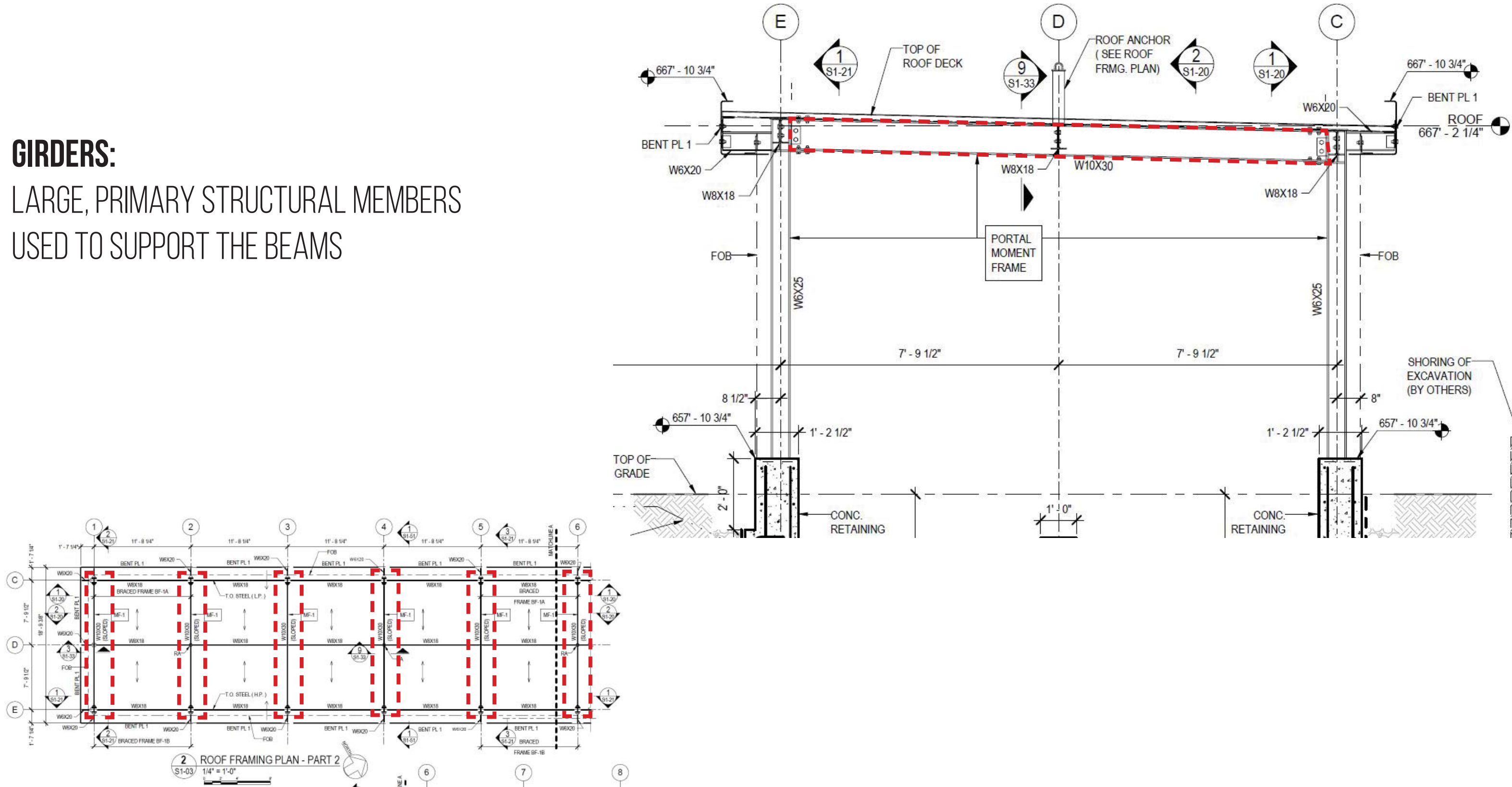
# FRAMING PLANS - ROOF FRAMING



# FRAMING PLANS - NEW RAMP

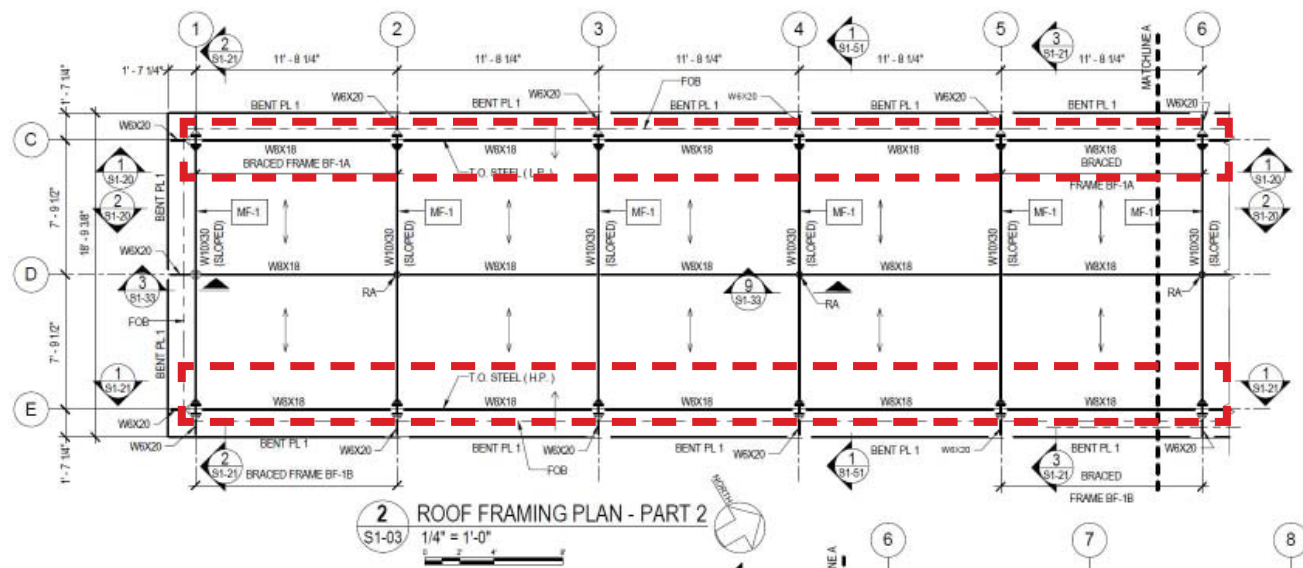
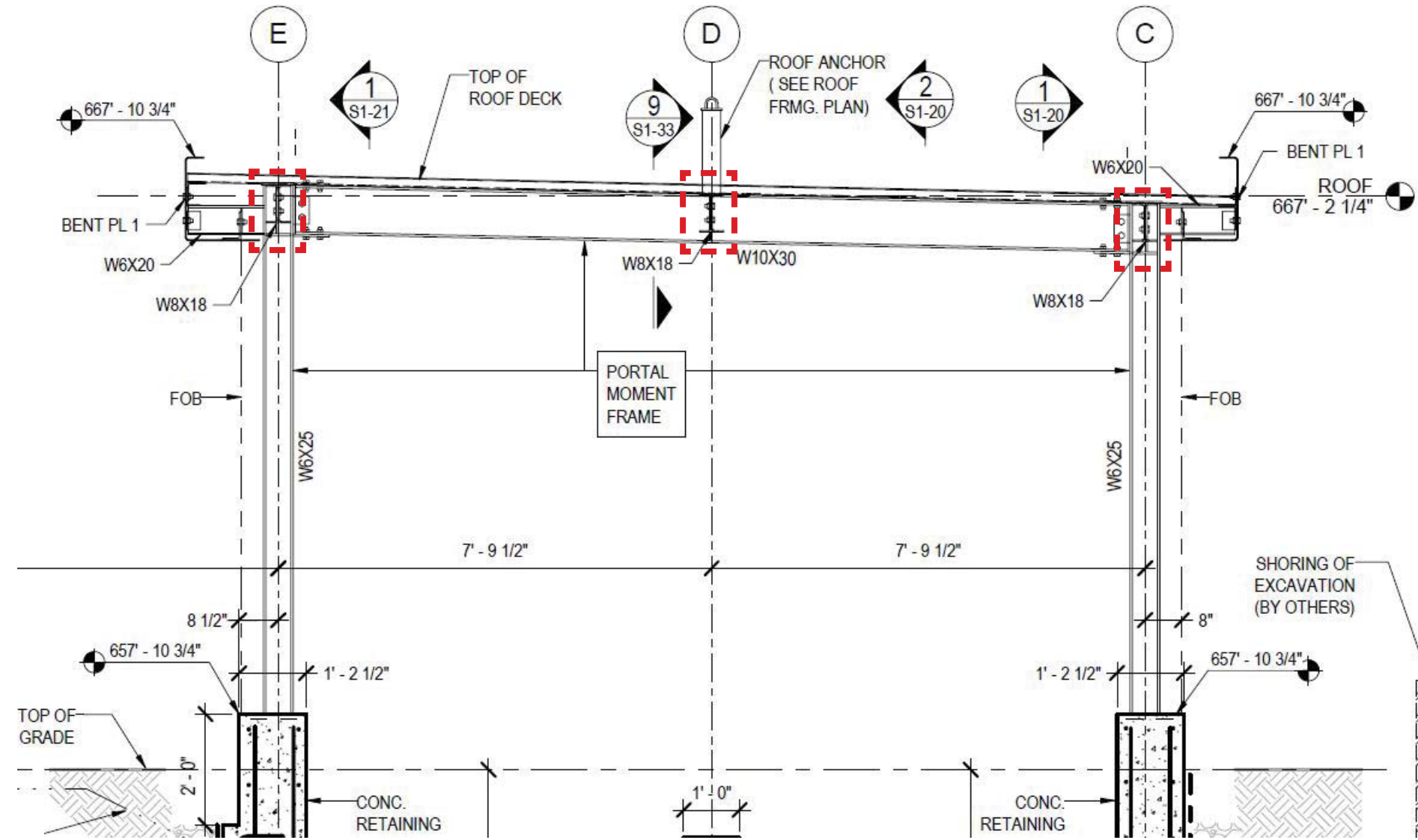
## GIRDERS:

LARGE, PRIMARY STRUCTURAL MEMBERS USED TO SUPPORT THE BEAMS



# FRAMING PLANS - NEW RAMP

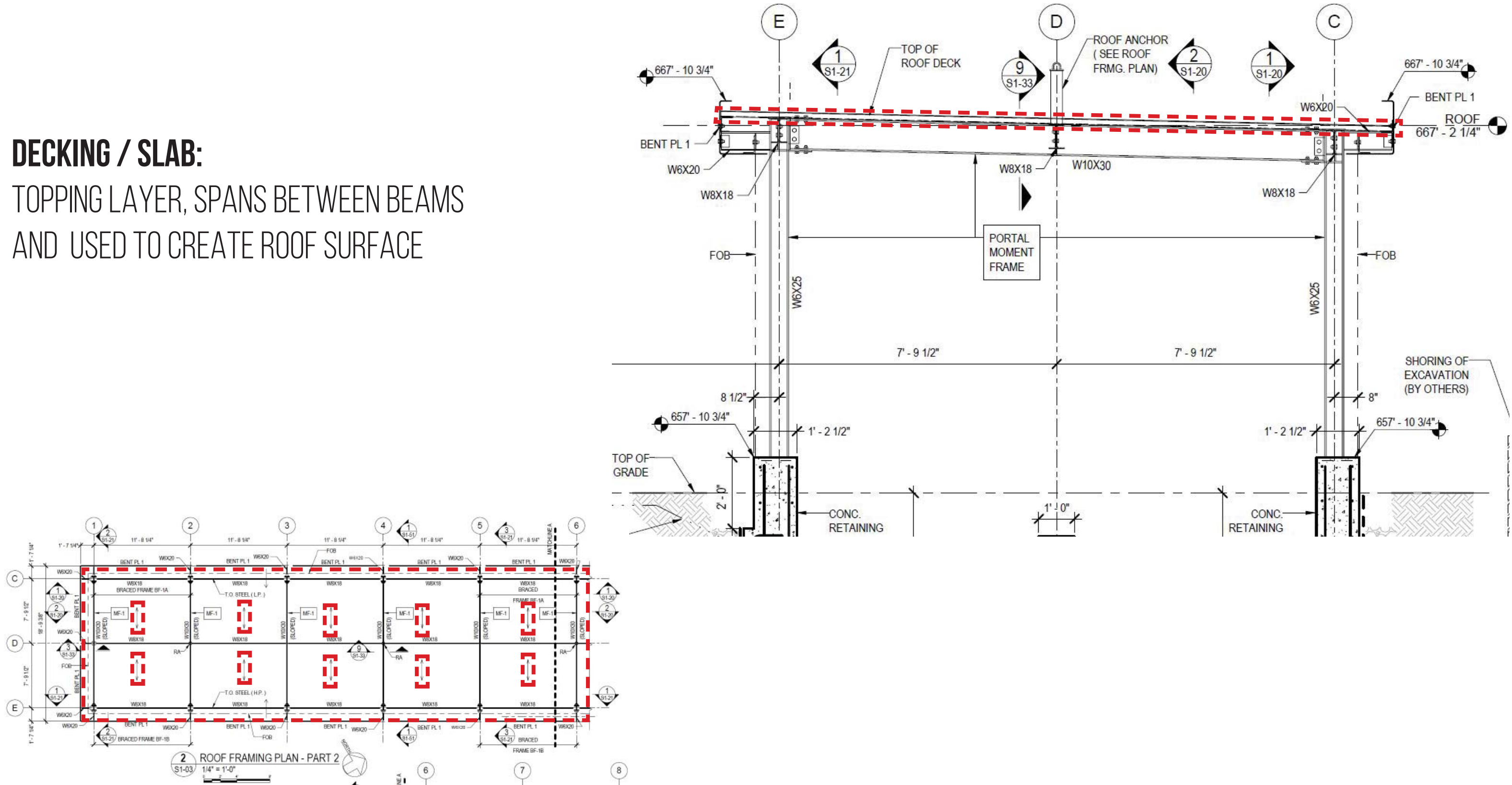
**BEAMS:**  
SMALLER, SECONDARY MEMBERS USED TO SUPPORT THE DECKING



# FRAMING PLANS - NEW RAMP

## DECKING / SLAB:

TOPPING LAYER, SPANS BETWEEN BEAMS AND USED TO CREATE ROOF SURFACE





# FRAMING PLANS - LET'S MAKE ONE

**10" DEEP BEAMS:**

CAN SPAN UP TO 25'-0"

**8" DEEP BEAMS:**

CAN SPAN UP TO 20'-0"

**DECKING:**

CAN SPAN UP TO 10'-0"

