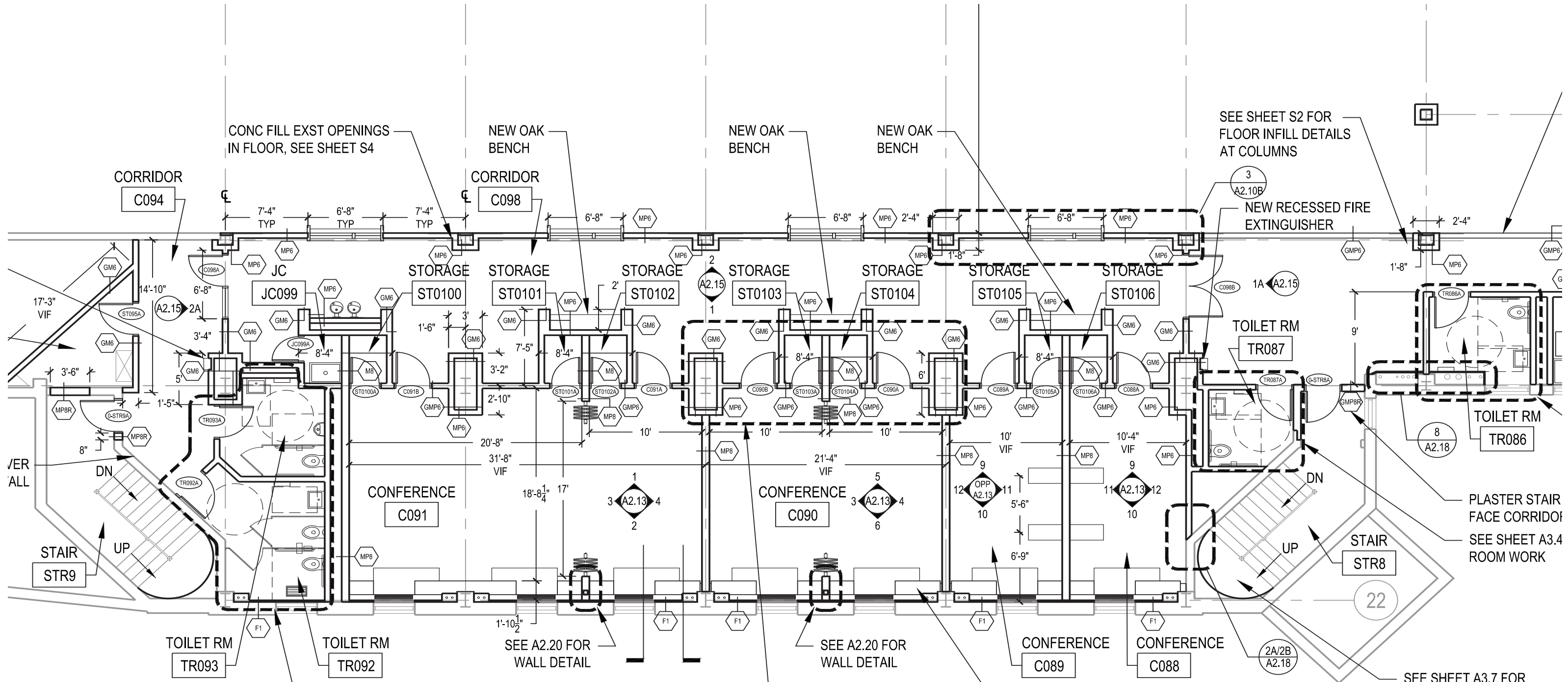


# READING DRAWINGS



NOTE:  
CONFERENCE ROOMS C088,  
C089, C090, AND C091 TO  
HAVE NEW CARPET FLOORS

NOTE:  
CONCRETE FLOORS IN ROOMS  
C076, C084, C094, C098, AND  
BR097 TO BE PAINTED

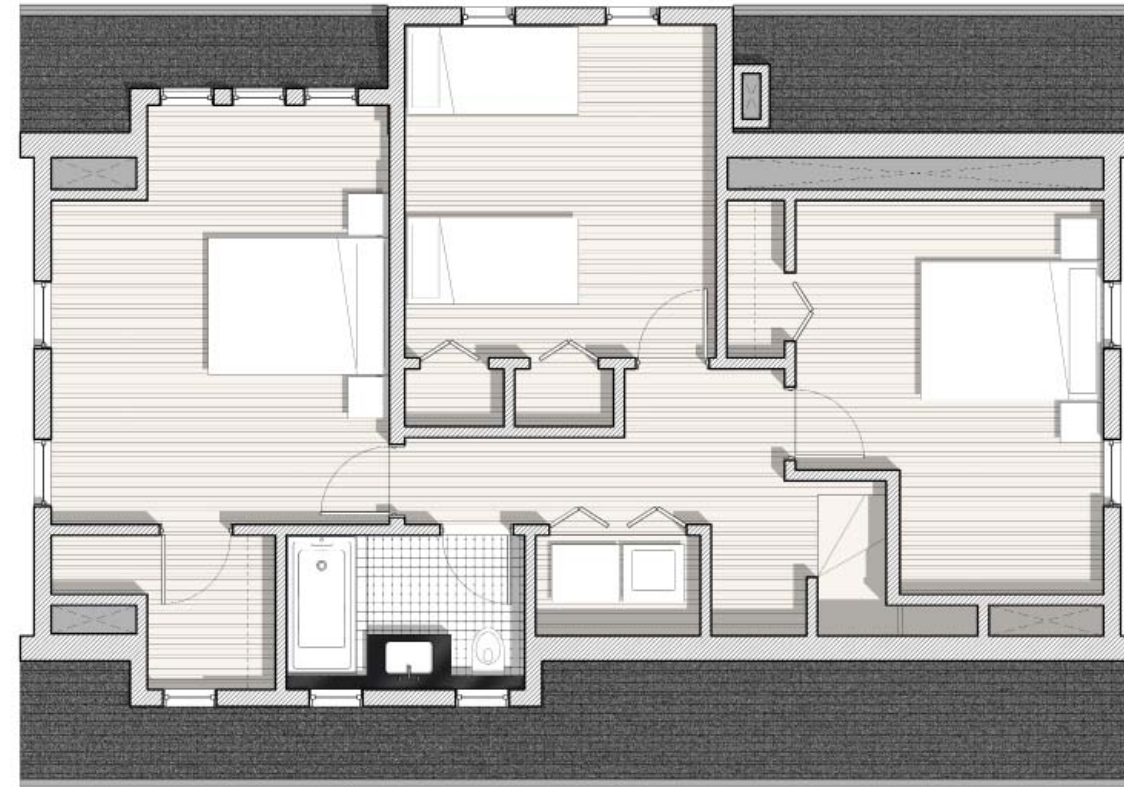
# DESIGN / PRESENTATION DRAWINGS

- USED TO CONVEY DESIGN INTENT IN A WAY THAT IS EASY TO UNDERSTAND AND DIGEST, EVEN FOR PEOPLE WHO ARE NOT IN THE BUILDING INDUSTRY
- SHOULD BE CLEAR AND INTUITIVE
- MAY BE USEFUL FOR CONSTRUCTION, BUT TYPICALLY NOT SUFFICIENT
- CAN BE PLANS, SECTIONS, ELEVATIONS, OR 3D DRAWINGS / RENDERINGS



# DESIGN / PRESENTATION DRAWINGS - FLOOR PLANS

- WHAT DO WE SEE IN THESE PLANS?
- HOW IS INFORMATION CONVEYED?



THIRD FLOOR PLAN

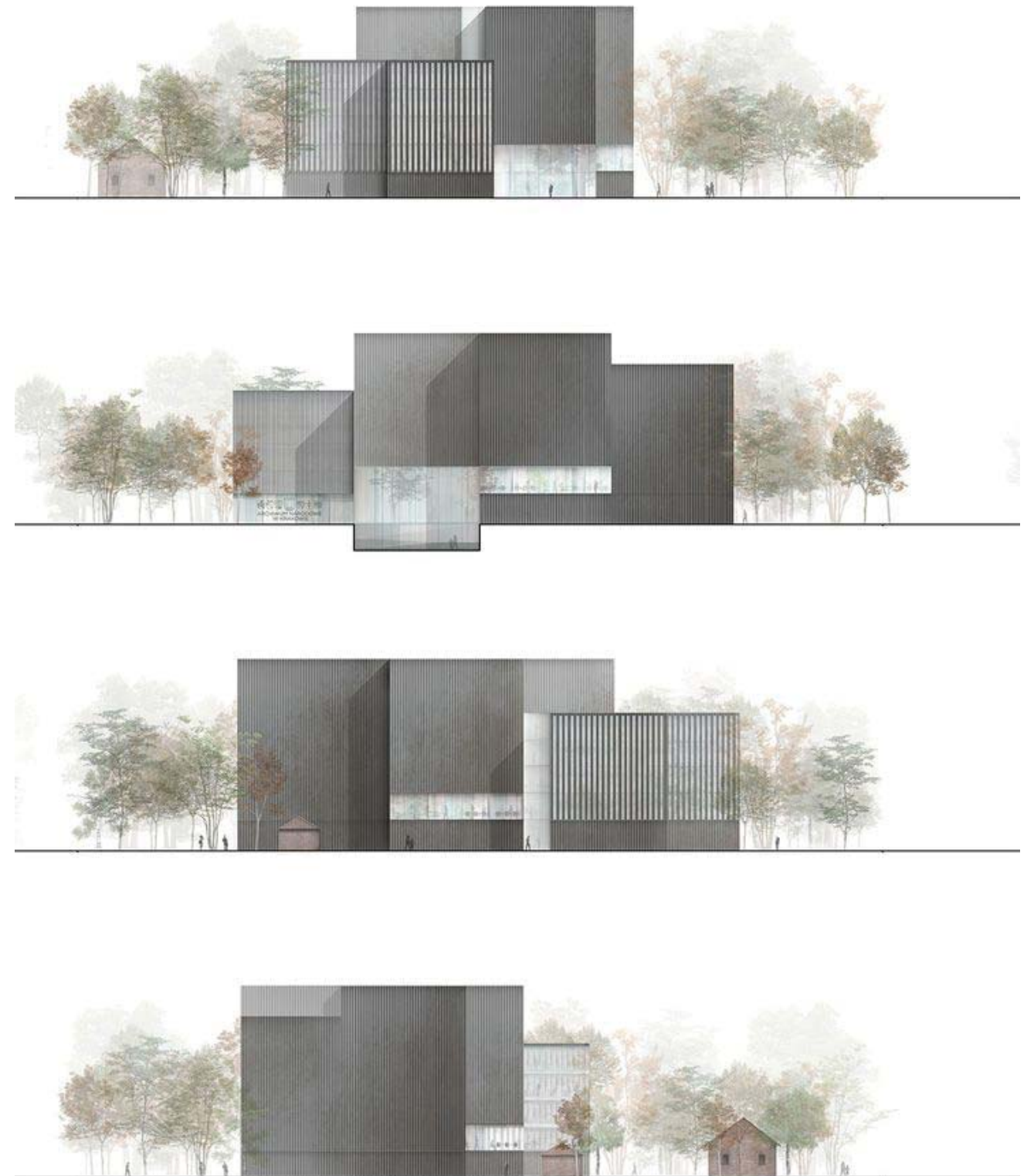


SECOND FLOOR PLAN

# DESIGN / PRESENTATION DRAWINGS - SECTIONS / ELEVATIONS



HIGH RISE SECTION



ELEVATIONS

# DESIGN / PRESENTATION DRAWINGS - INTERIORS

Axon of bathroom option 01 - Finish Materials



Axon of bathroom option 02 - Finish Materials



AXON DRAWINGS



INTERIOR ELEVATIONS

# DESIGN / PRESENTATION DRAWINGS - RENDERINGS



RENDERINGS



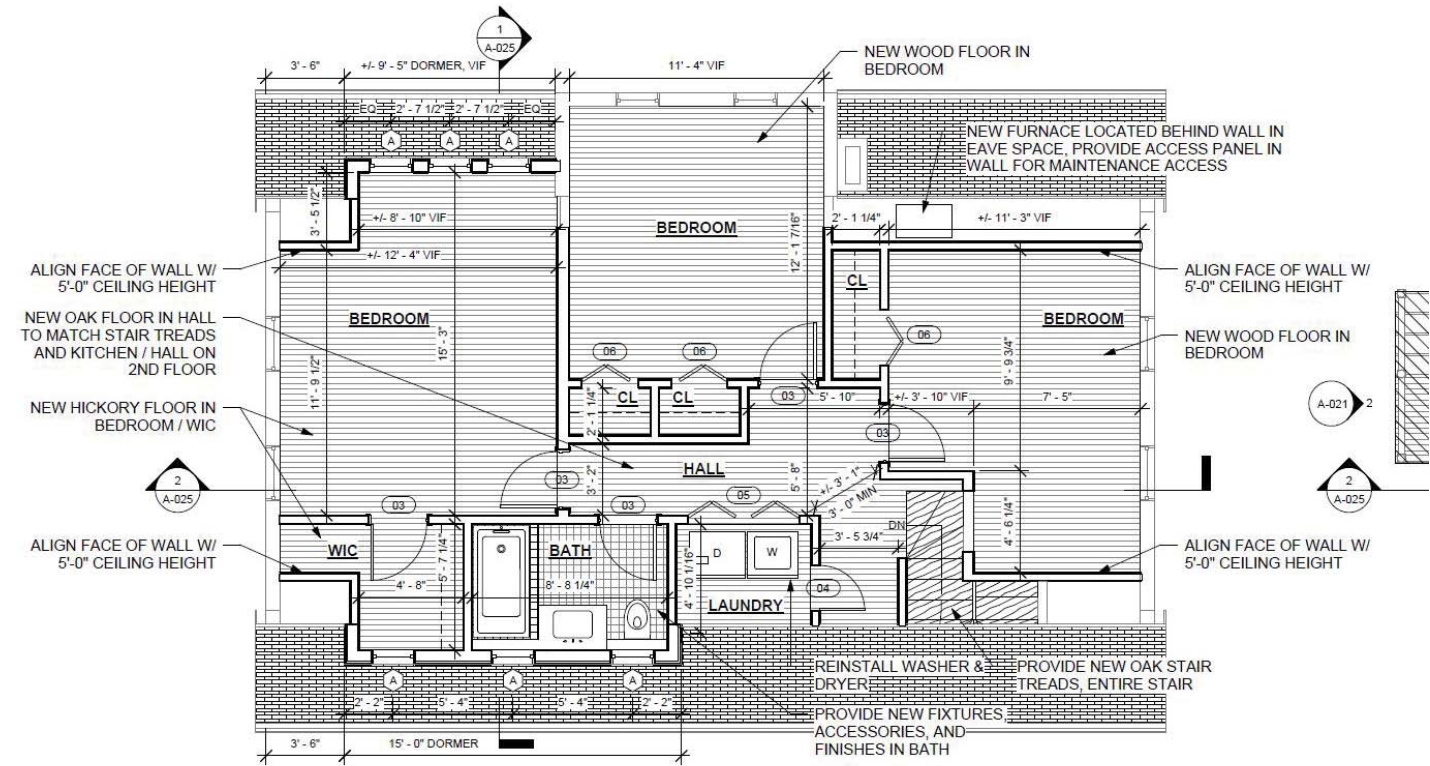
# TECHNICAL / CONSTRUCTION DRAWINGS

- USED TO CONVEY DESIGN INTENT IN A WAY THAT IS VERY SPECIFIC, AND IS INTENDED FOR USE BY CONTRACTORS / BUILDERS
- USES STANDARD CONVENTIONS UNDERSTOOD ACROSS THE INDUSTRY
- USEFUL FOR CONSTRUCTION, BUT MAY BE DIFFICULT TO UNDERSTAND FOR THOSE NOT FAMILIAR WITH THE INDUSTRY
- CAN BE PLANS, SECTIONS, ELEVATIONS, OR 3D DRAWINGS / RENDERINGS

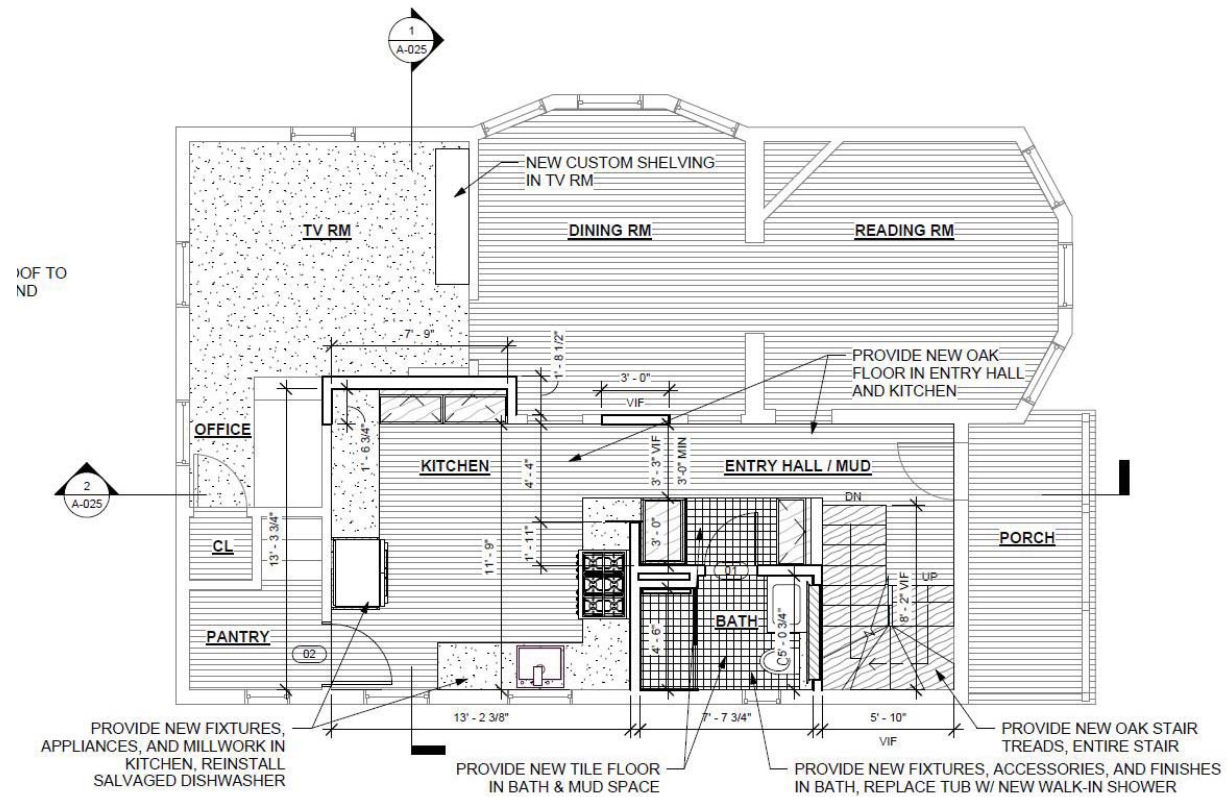


# TECHNICAL / CONSTRUCTION DRAWINGS - FLOOR PLANS

- WHAT DO WE SEE IN THESE PLANS?
- HOW IS INFORMATION CONVEYED?



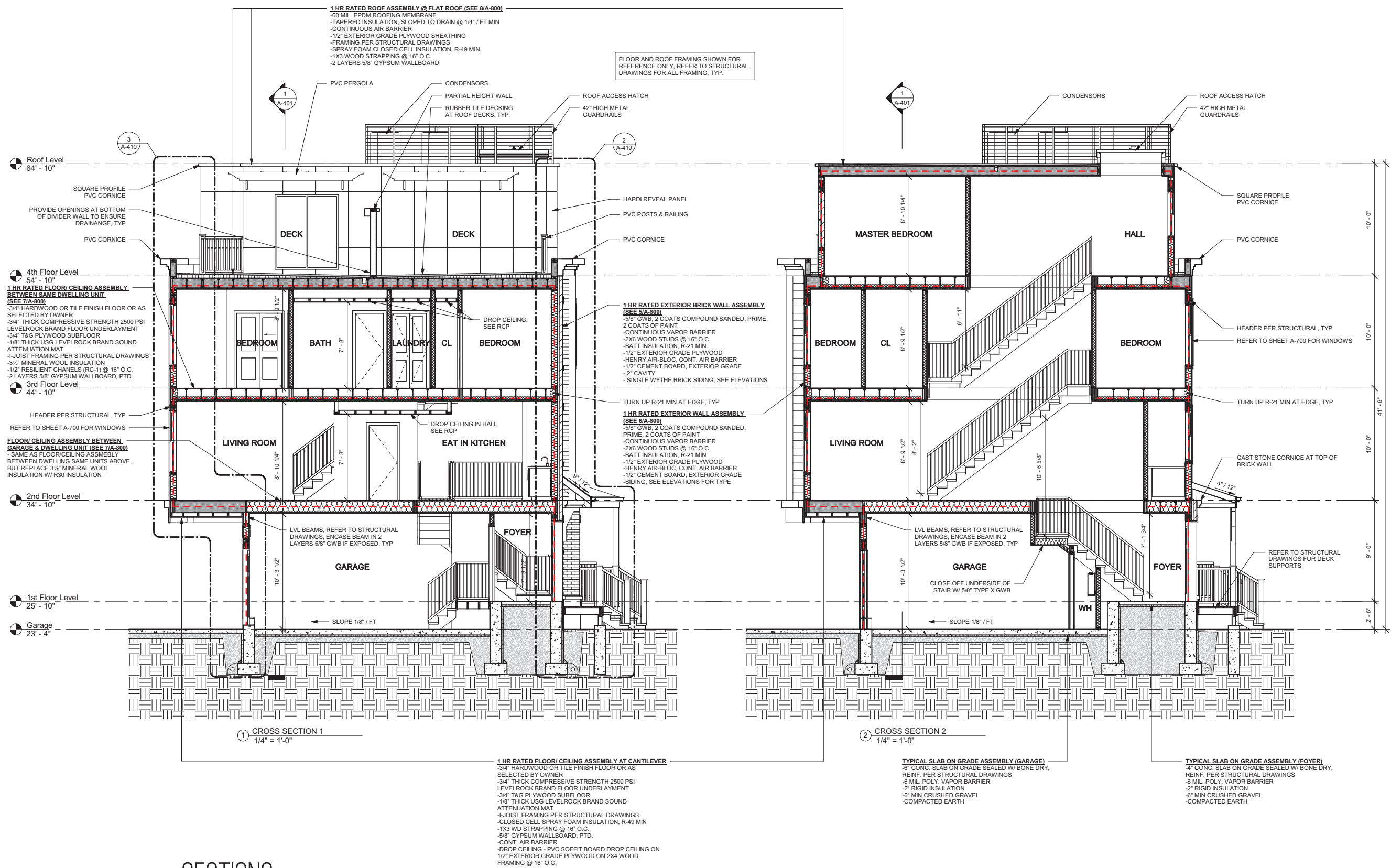
THIRD FLOOR PLAN



SECOND FLOOR PLAN

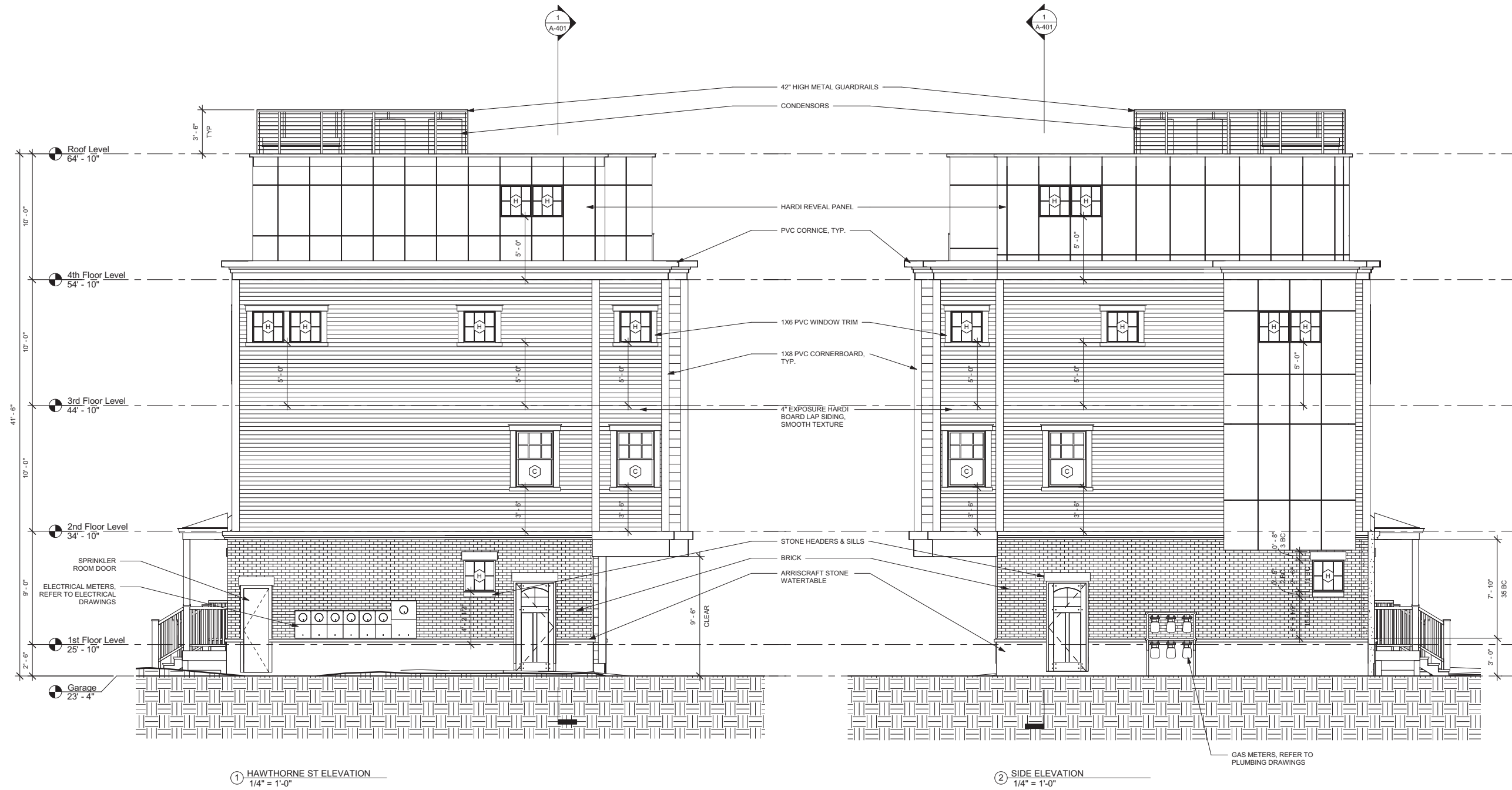


# TECHNICAL / CONSTRUCTION DRAWINGS- SECTIONS



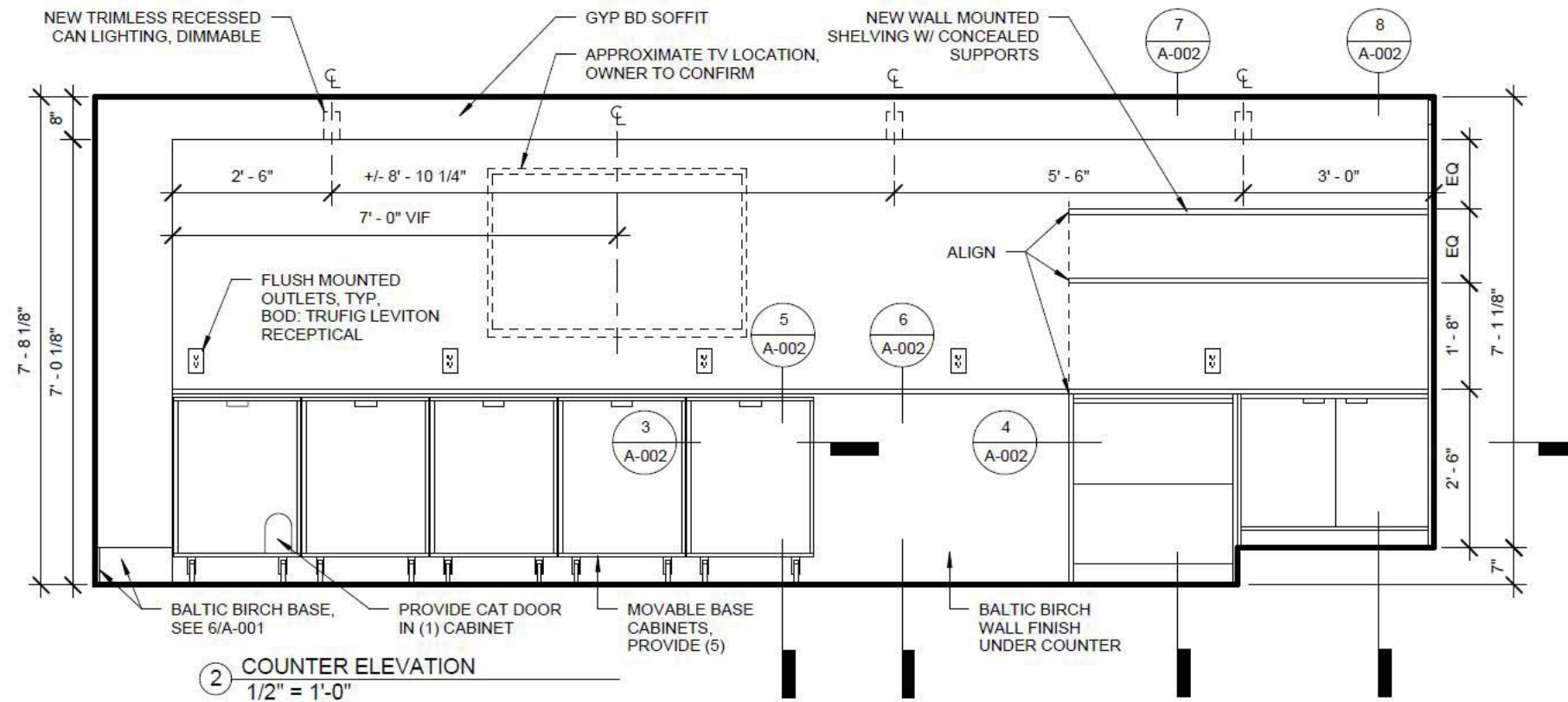
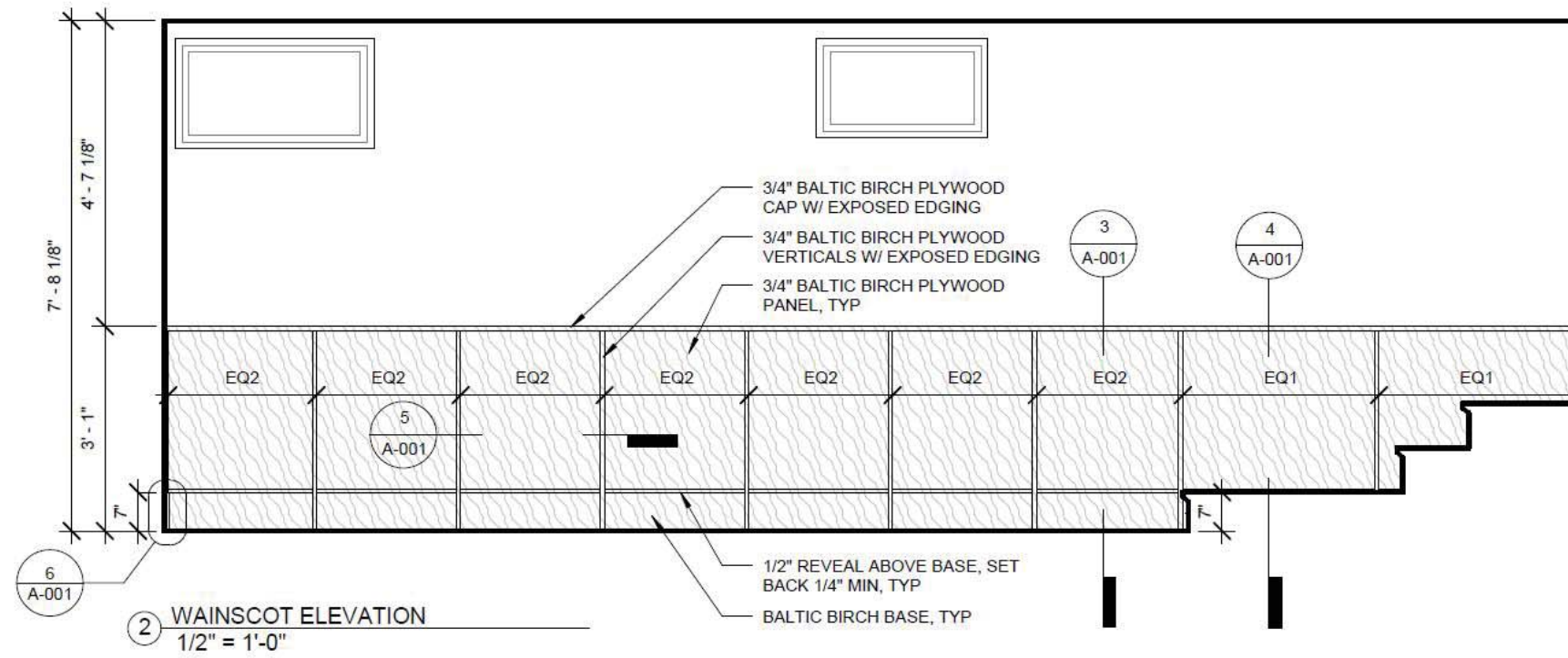
SECTIONS

# TECHNICAL / CONSTRUCTION DRAWINGS - ELEVATIONS



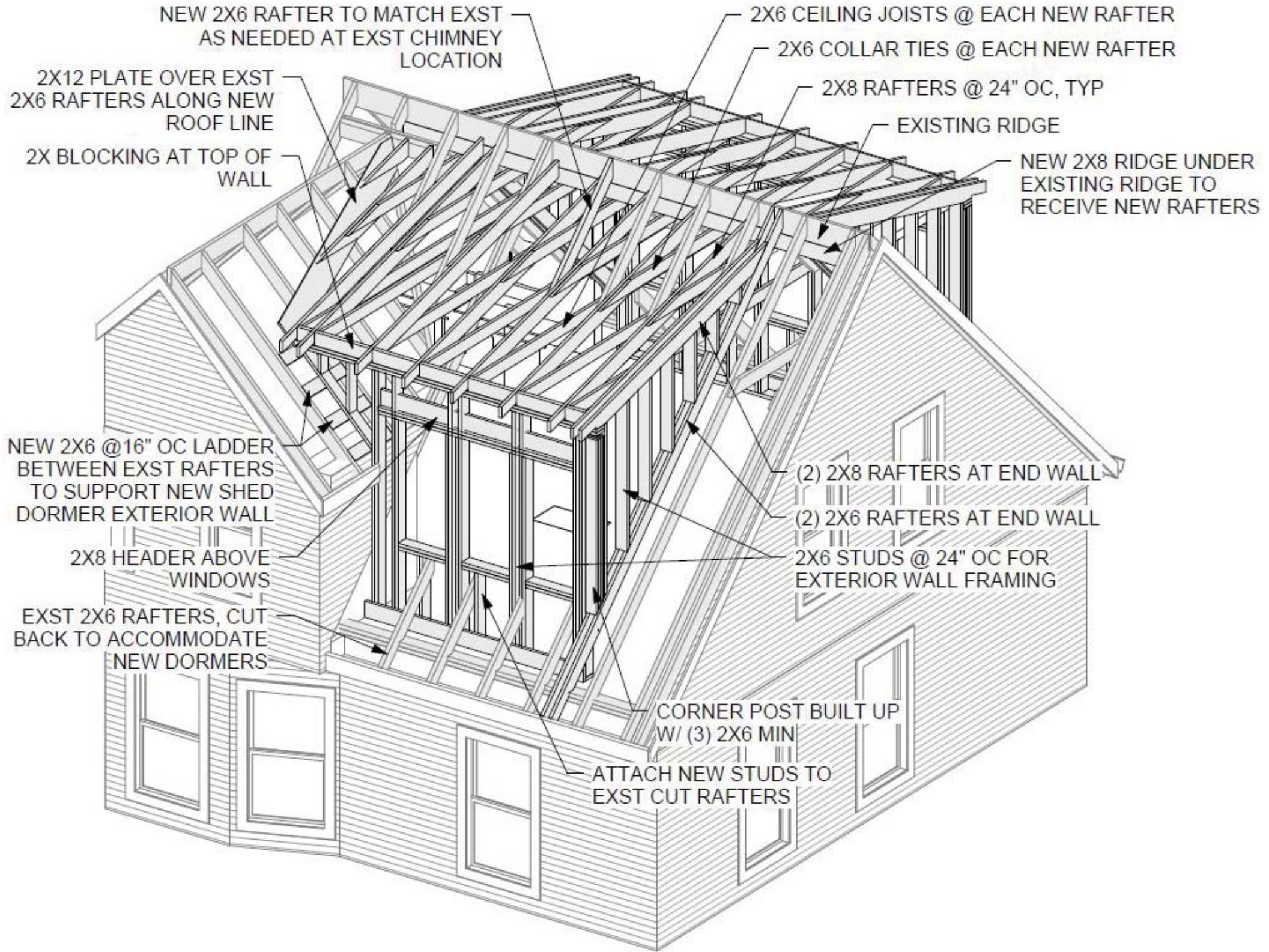
ELEVATIONS

# TECHNICAL / CONSTRUCTION DRAWINGS - INTERIORS



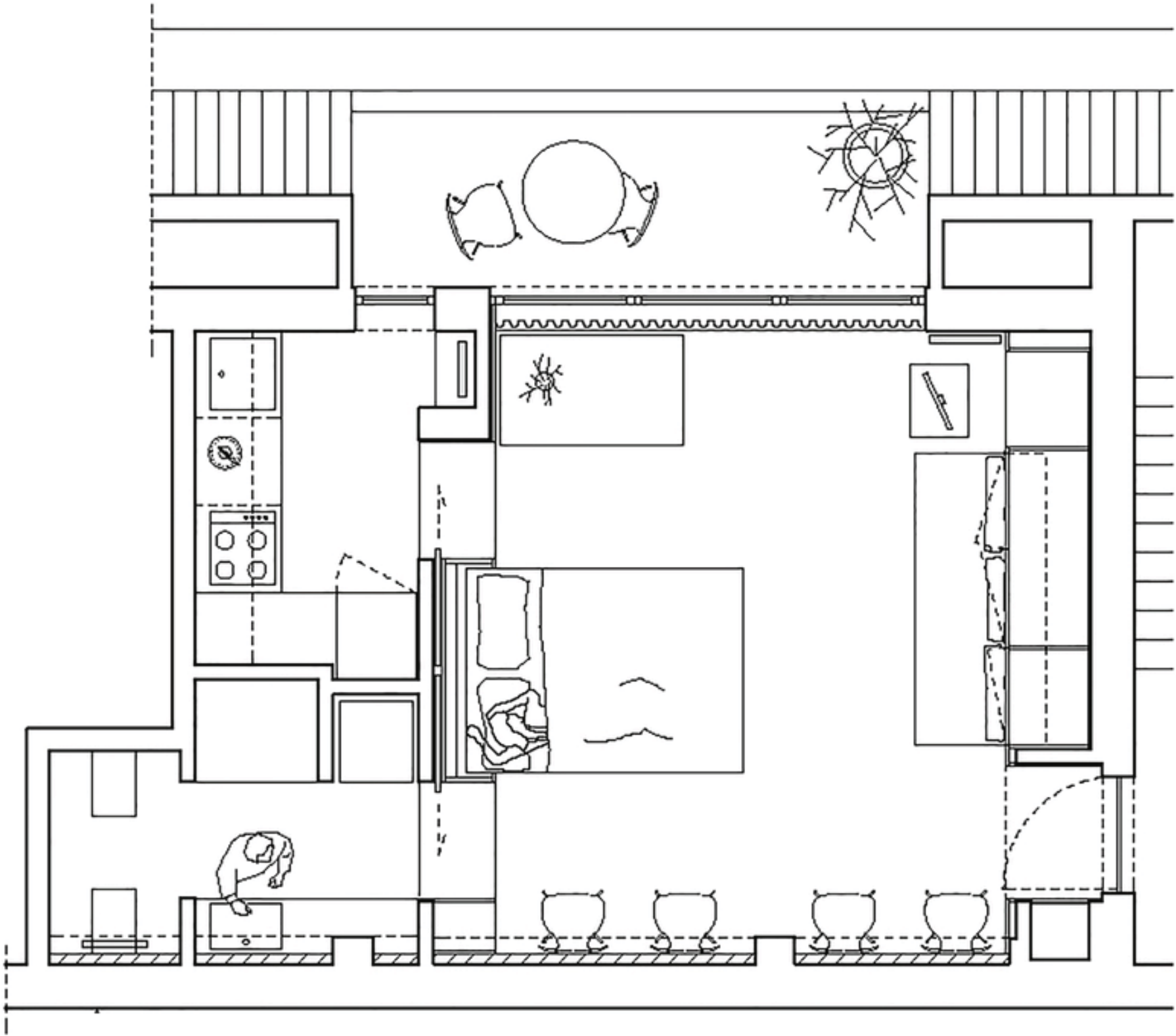
## INTERIOR ELEVATIONS

# TECHNICAL / CONSTRUCTION DRAWINGS - 3D AXON

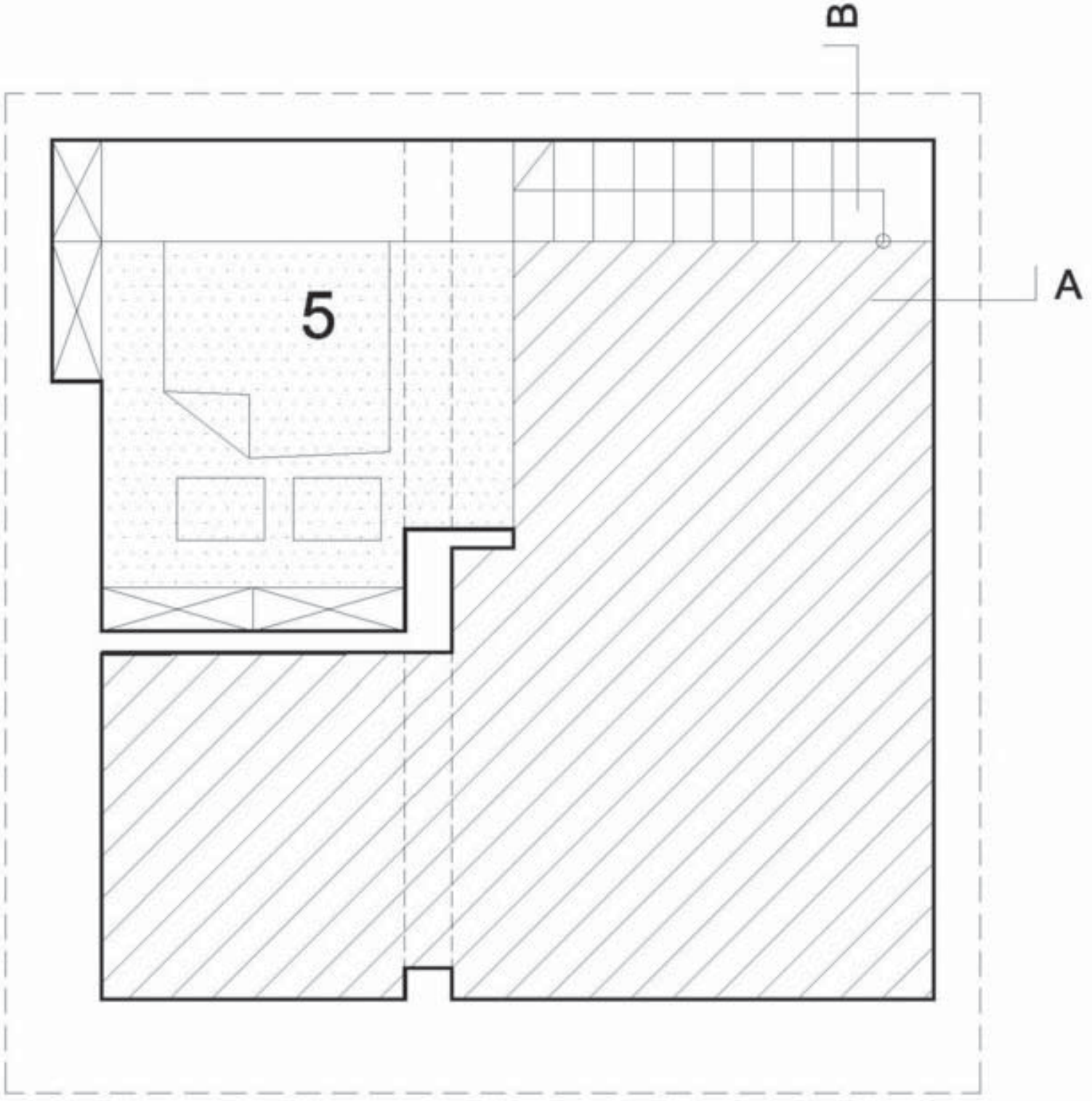
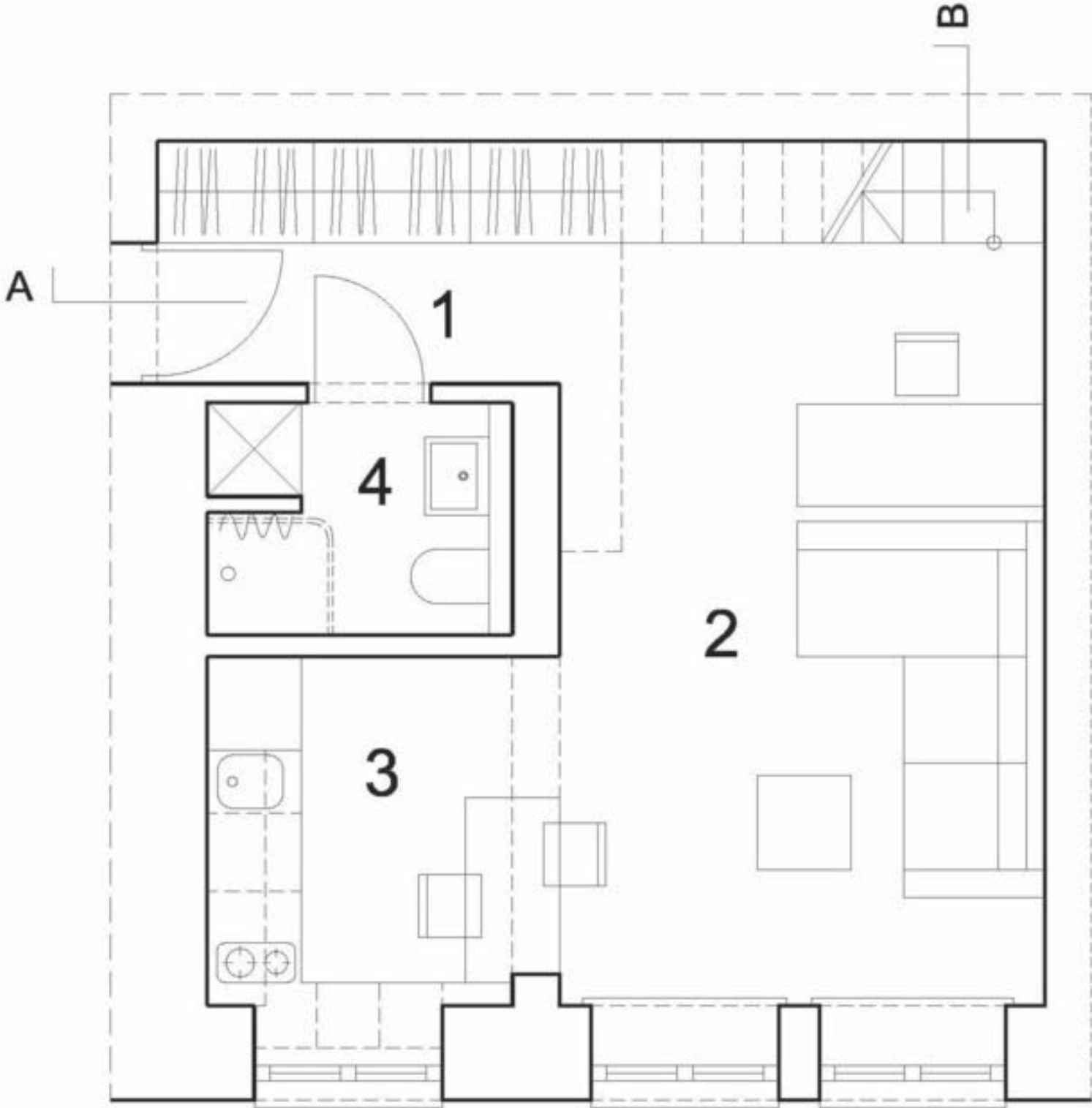


STRUCTURAL AXON

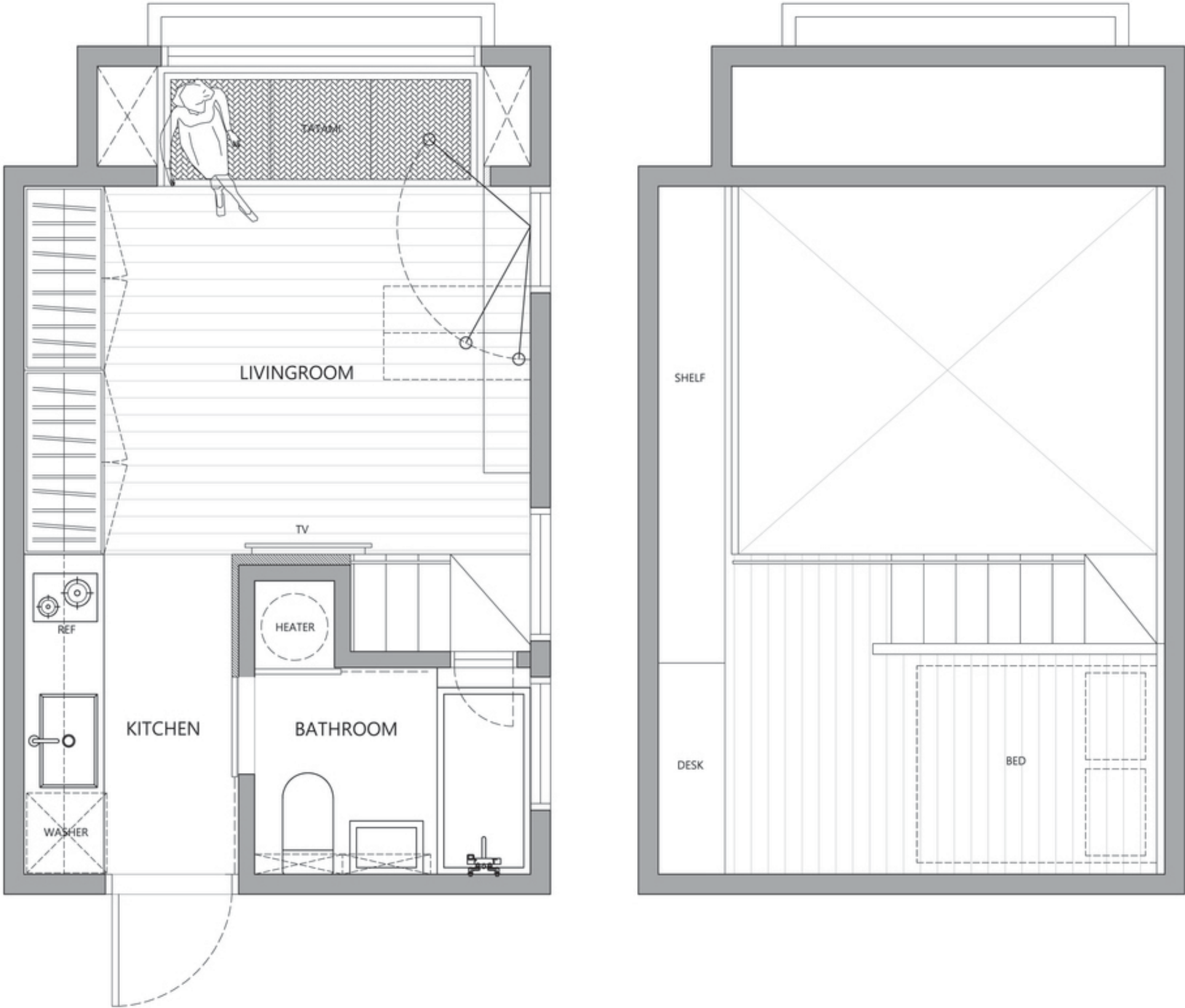
# READING DRAWINGS - LINE WEIGHTS + HATCHING



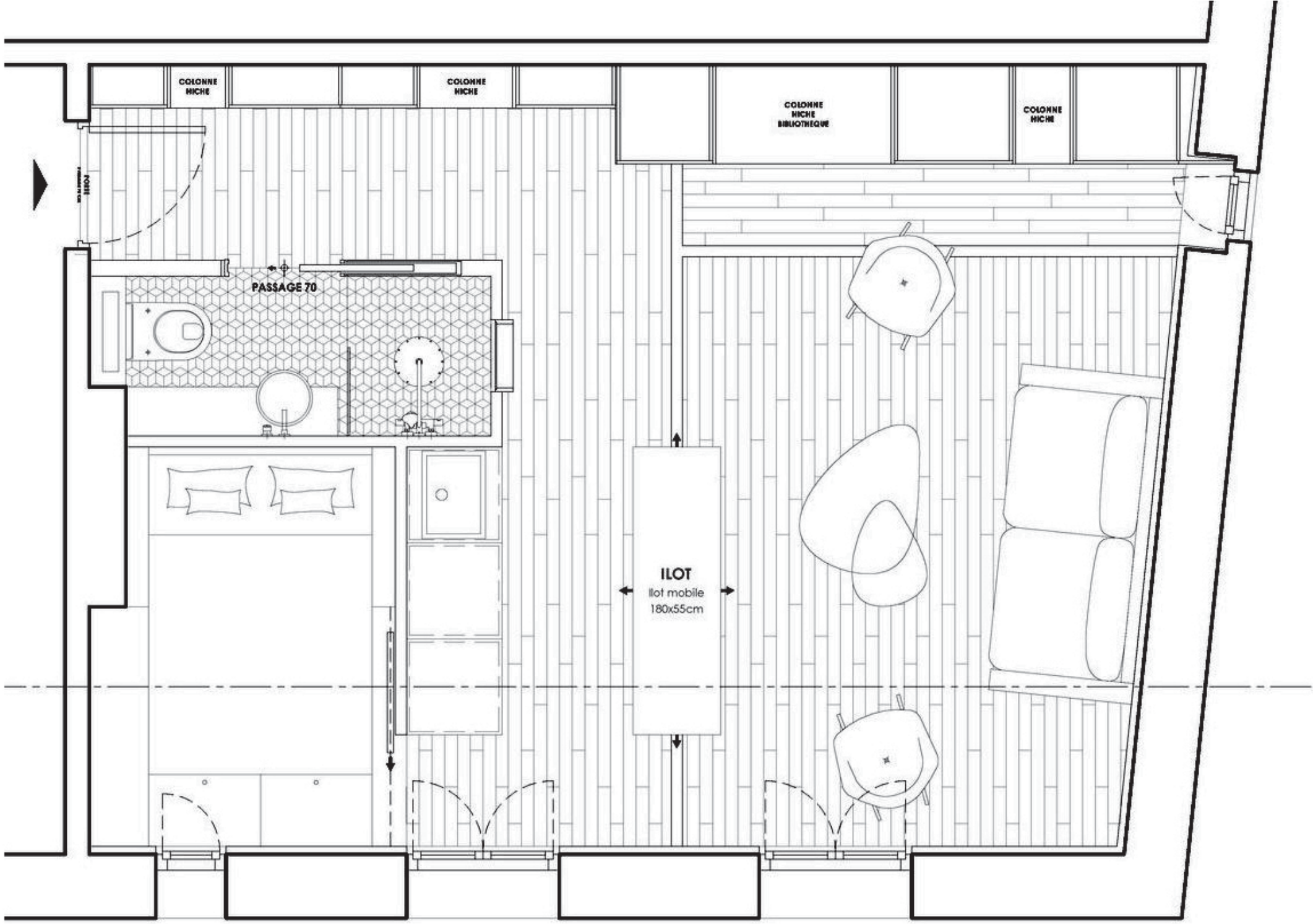
# READING DRAWINGS - LINE WEIGHTS + HATCHING



# READING DRAWINGS - LINE WEIGHTS + HATCHING

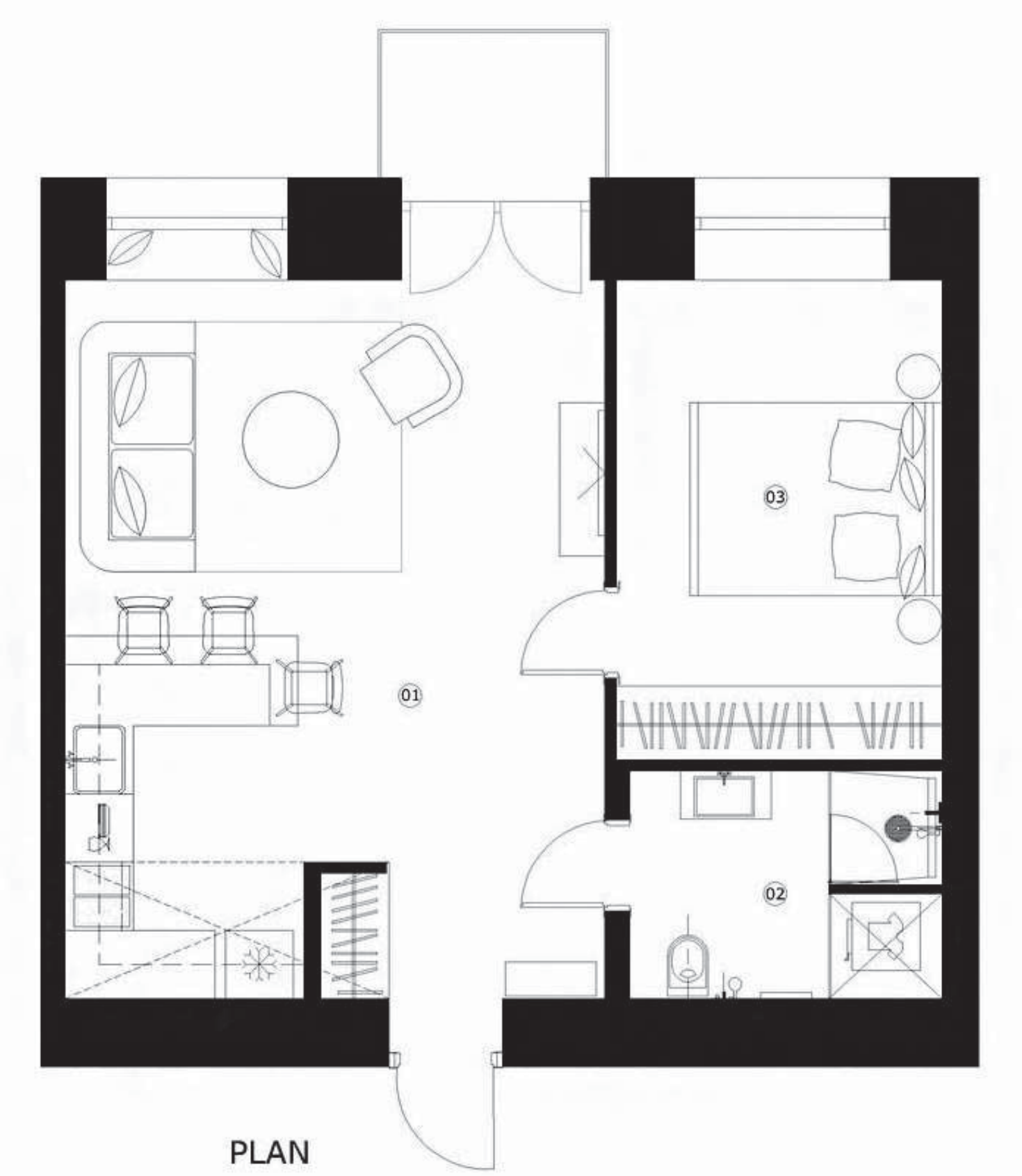


# READING DRAWINGS - LINE WEIGHTS + HATCHING

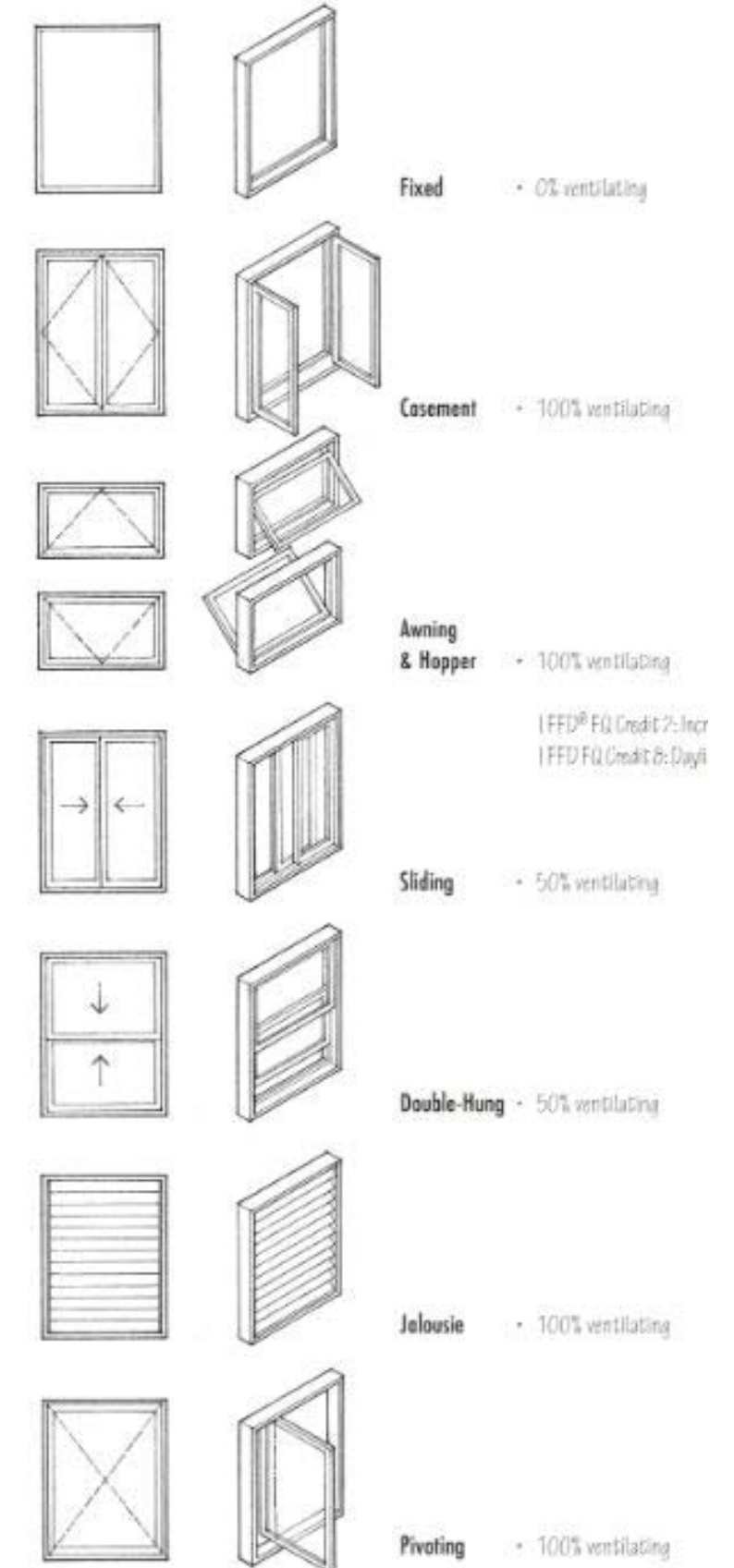
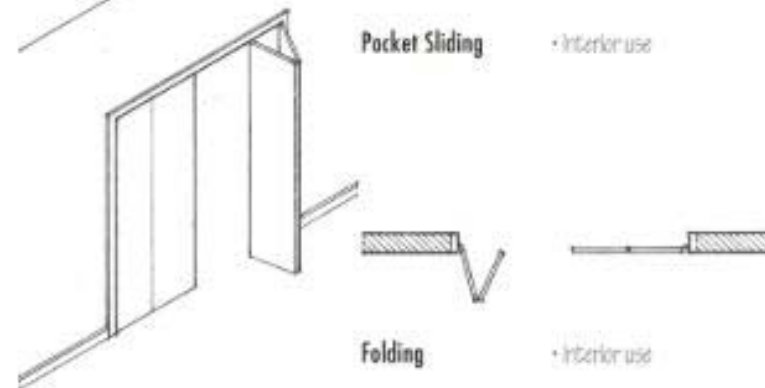
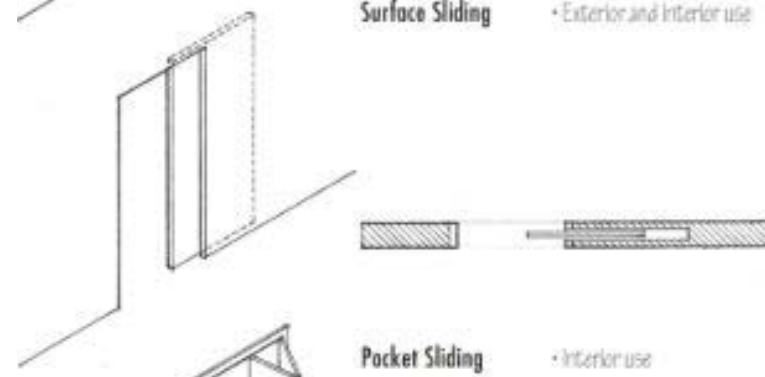
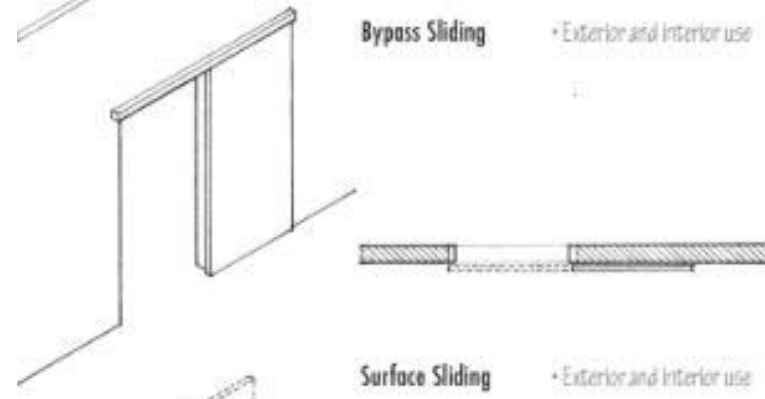
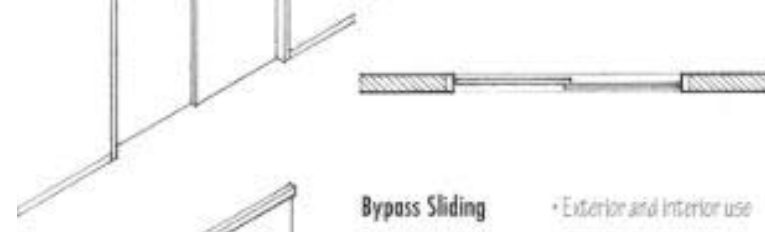
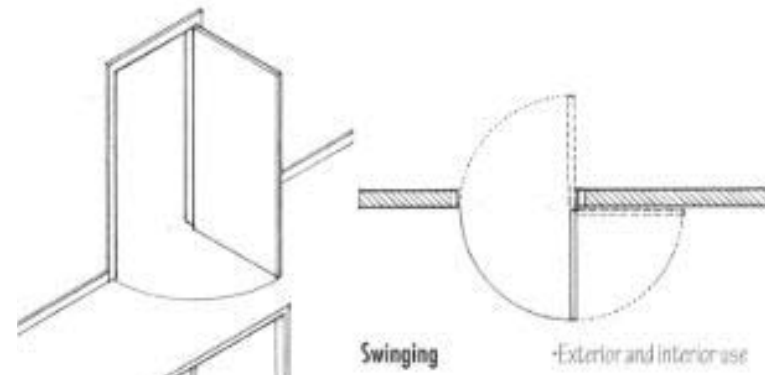
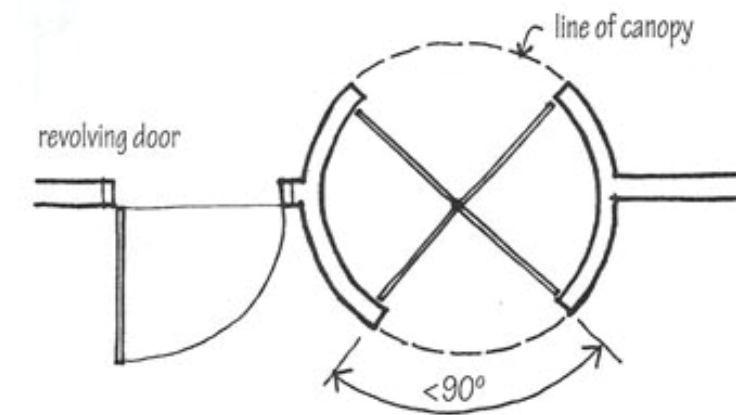
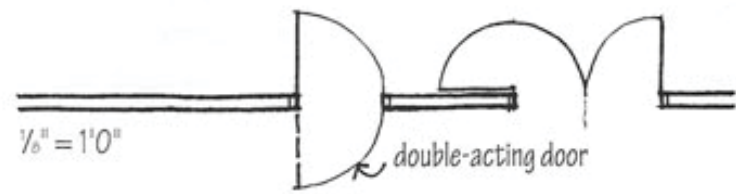
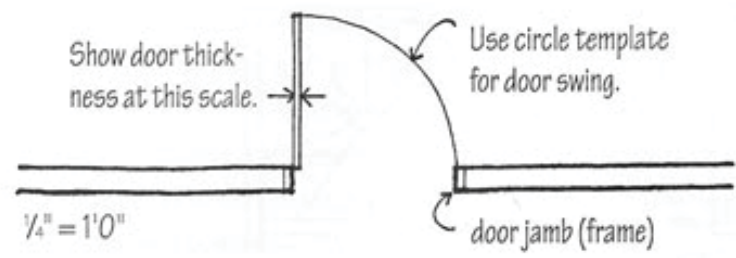




# READING DRAWINGS - LINE WEIGHTS + HATCHING



# READING DRAWINGS - STANDARD CONVENTIONS



# READING DRAWINGS - STANDARD CONVENTIONS

## Architectural Blueprint Symbols

