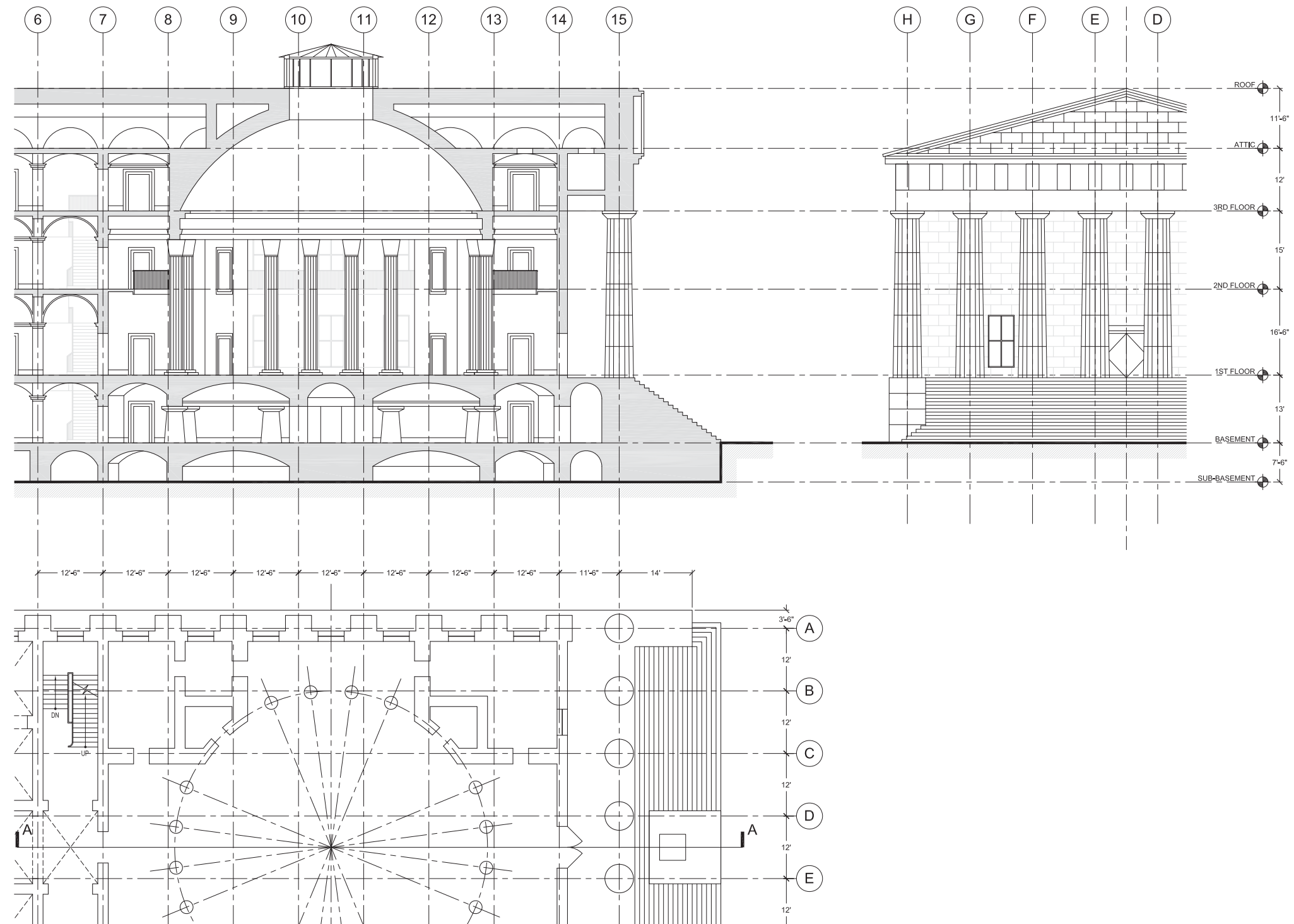
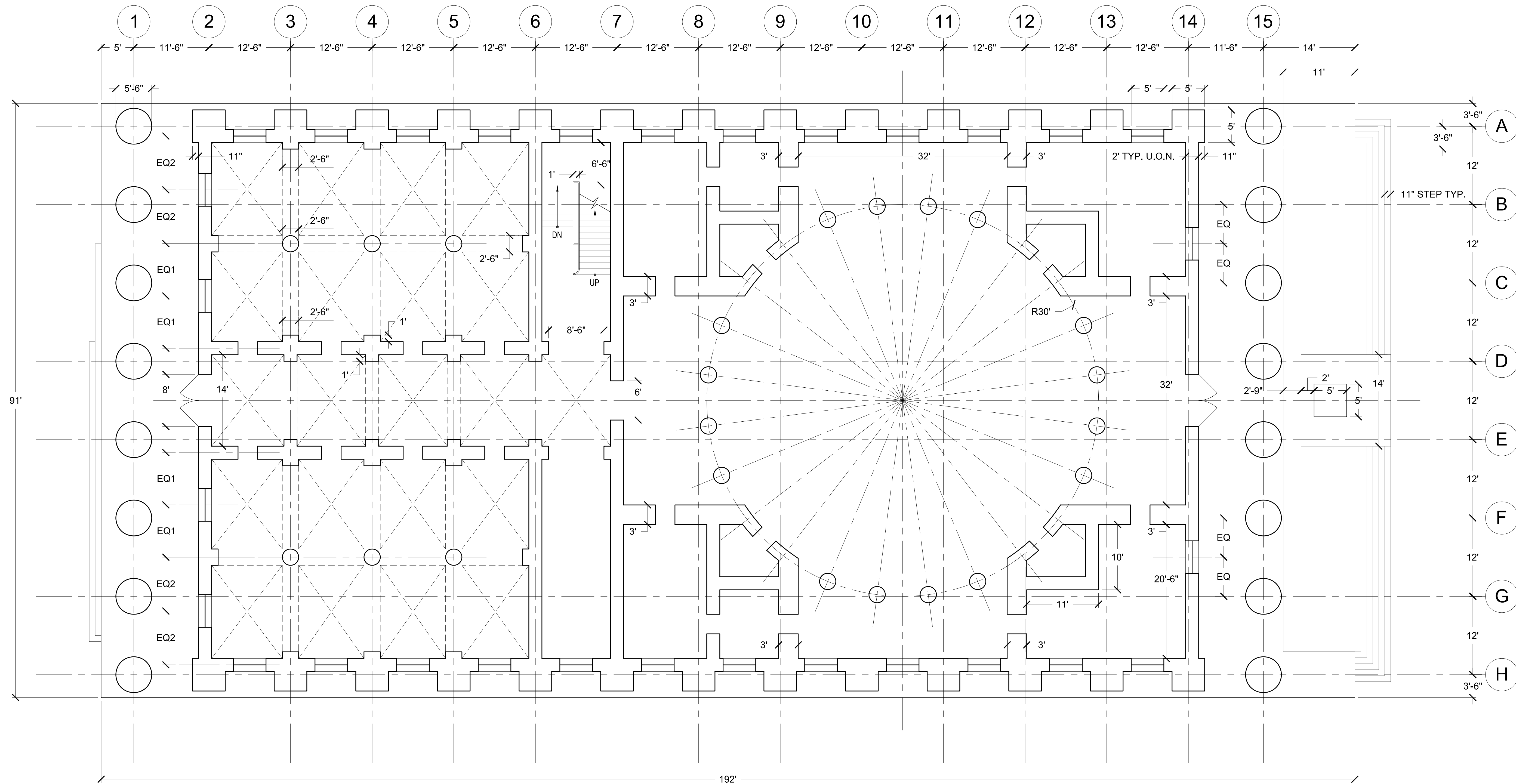


DRAWING SETUP - FEDERAL HALL

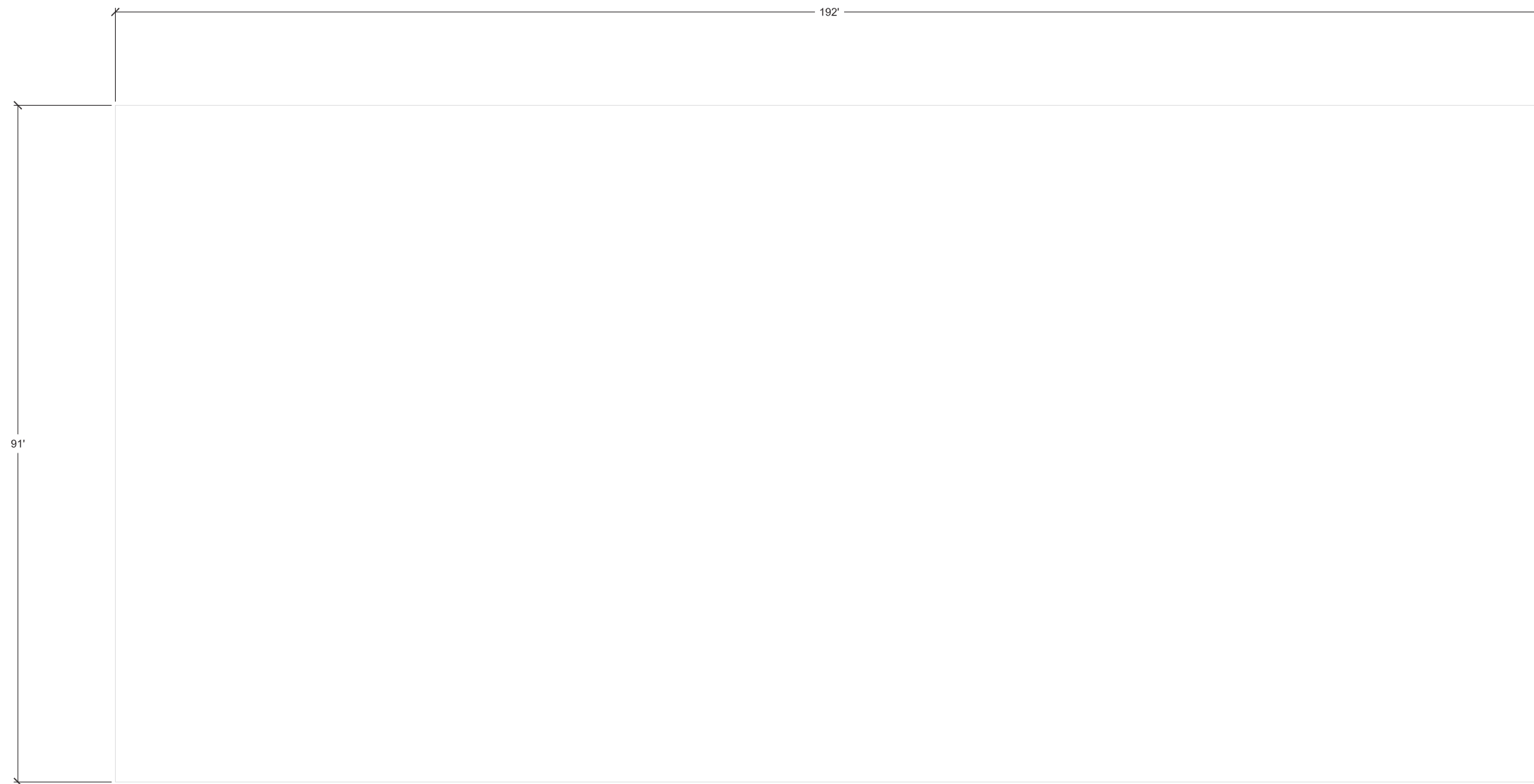




NOTES:

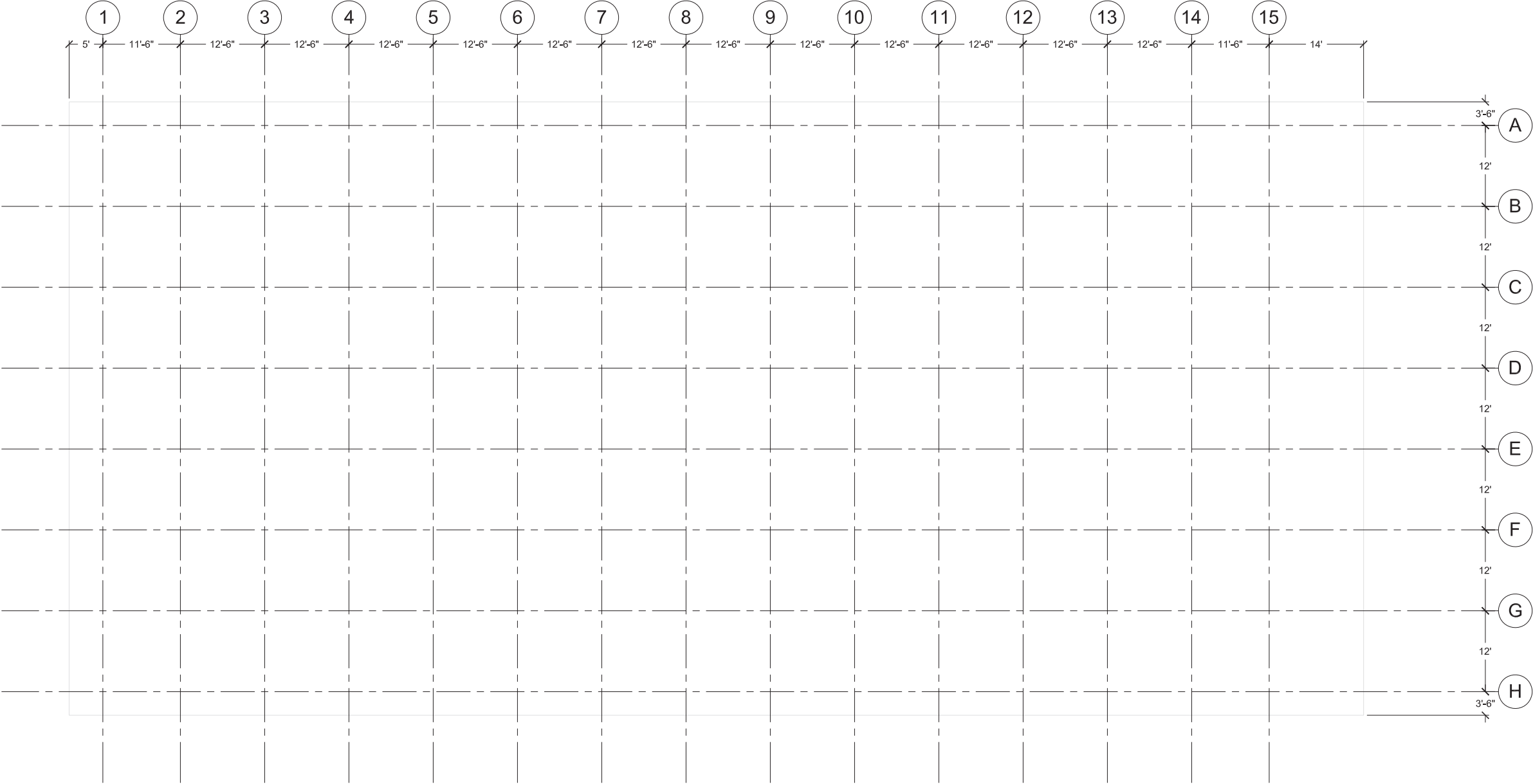
1. ALL WALLS 2'-0" THICK UNLESS OTHERWISE NOTED (U.O.N.)
2. ALL DOOR OPENINGS 3'-0" U.O.N.
3. ALL DOORS CENTERED U.O.N.
4. ALL WINDOWS 5'-0" WIDE
5. ALL STAIRS HAVE 11" TREADS, TYPICAL (TYP.)
6. EXTERIOR COLUMNS = 5'-6" DIAMETER, TYP.
7. INTERIOR COLUMNS = 2'-6" DIAMETER, TYP.
8. INTERIOR PILASTERS PROJECT 1'-0" OFF OF WALL, TYP.

PLAN SETUP



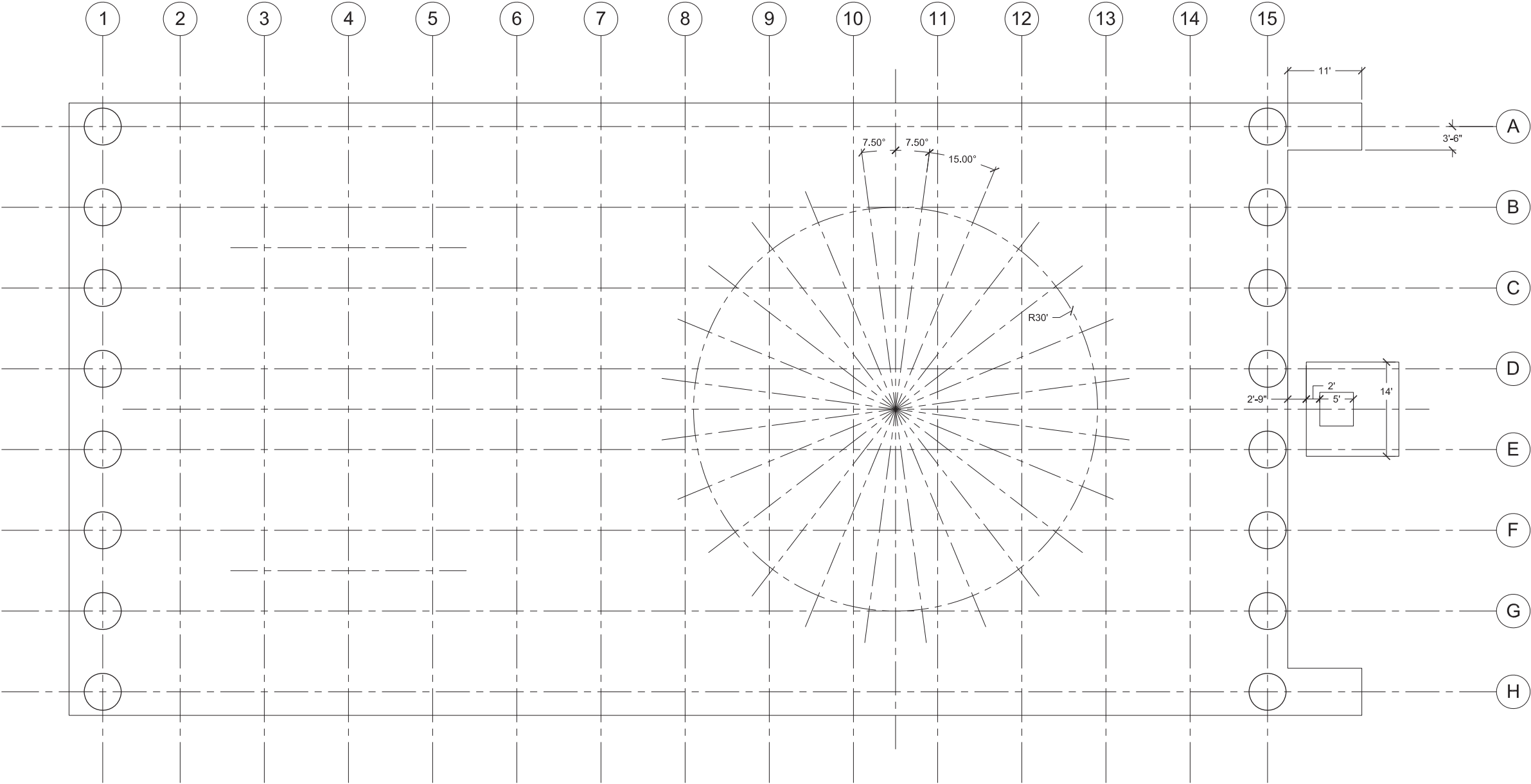
START BY LAYING OUT THE BASE USING THE DIMENSIONS GIVEN - USE LIGHT CONSTRUCTION LINES

PLAN SETUP



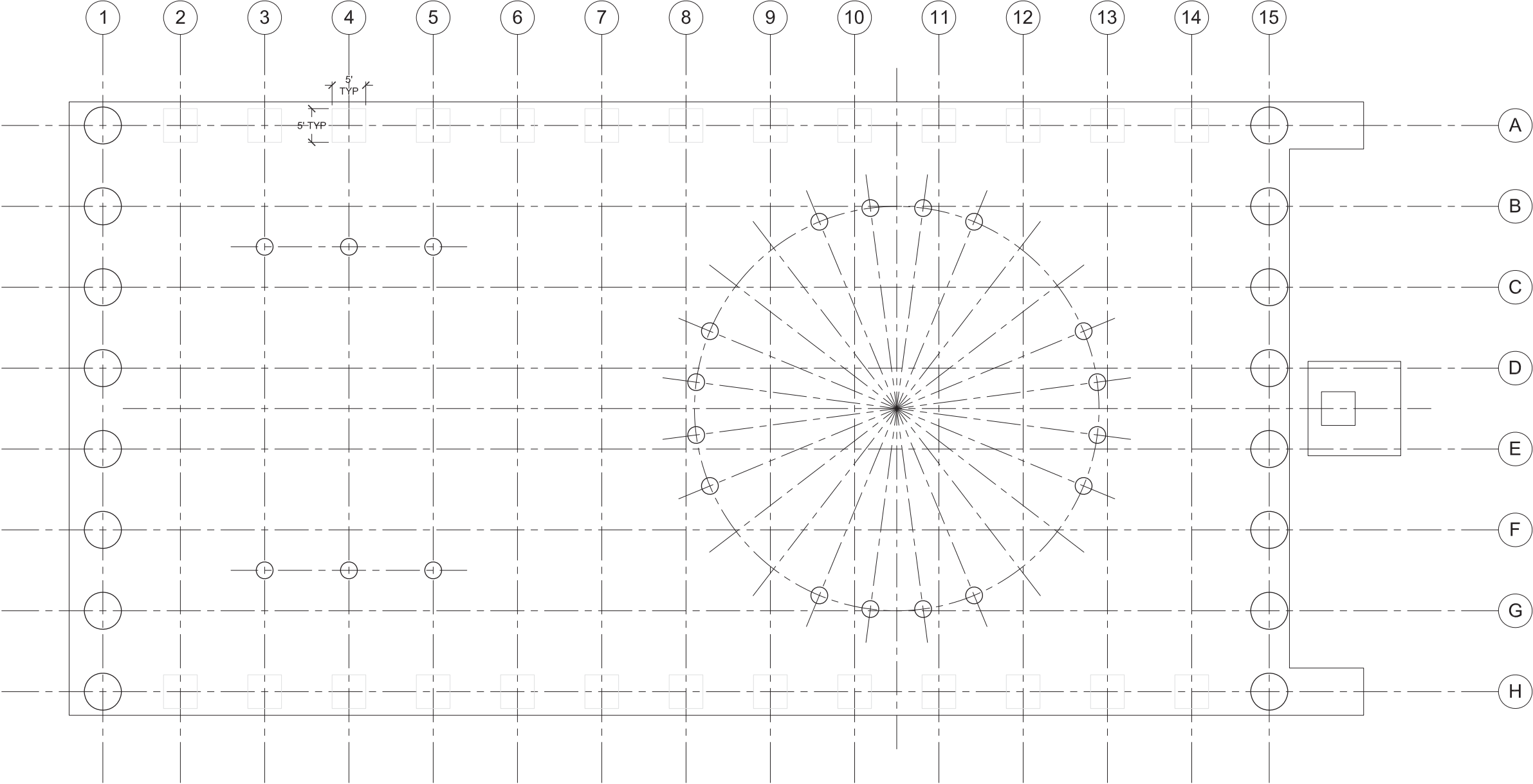
LAY OUT GRID LINES - USE THE CORNERS OF THE BASE TO ESTABLISH WHERE THE GRIDS START

PLAN SETUP



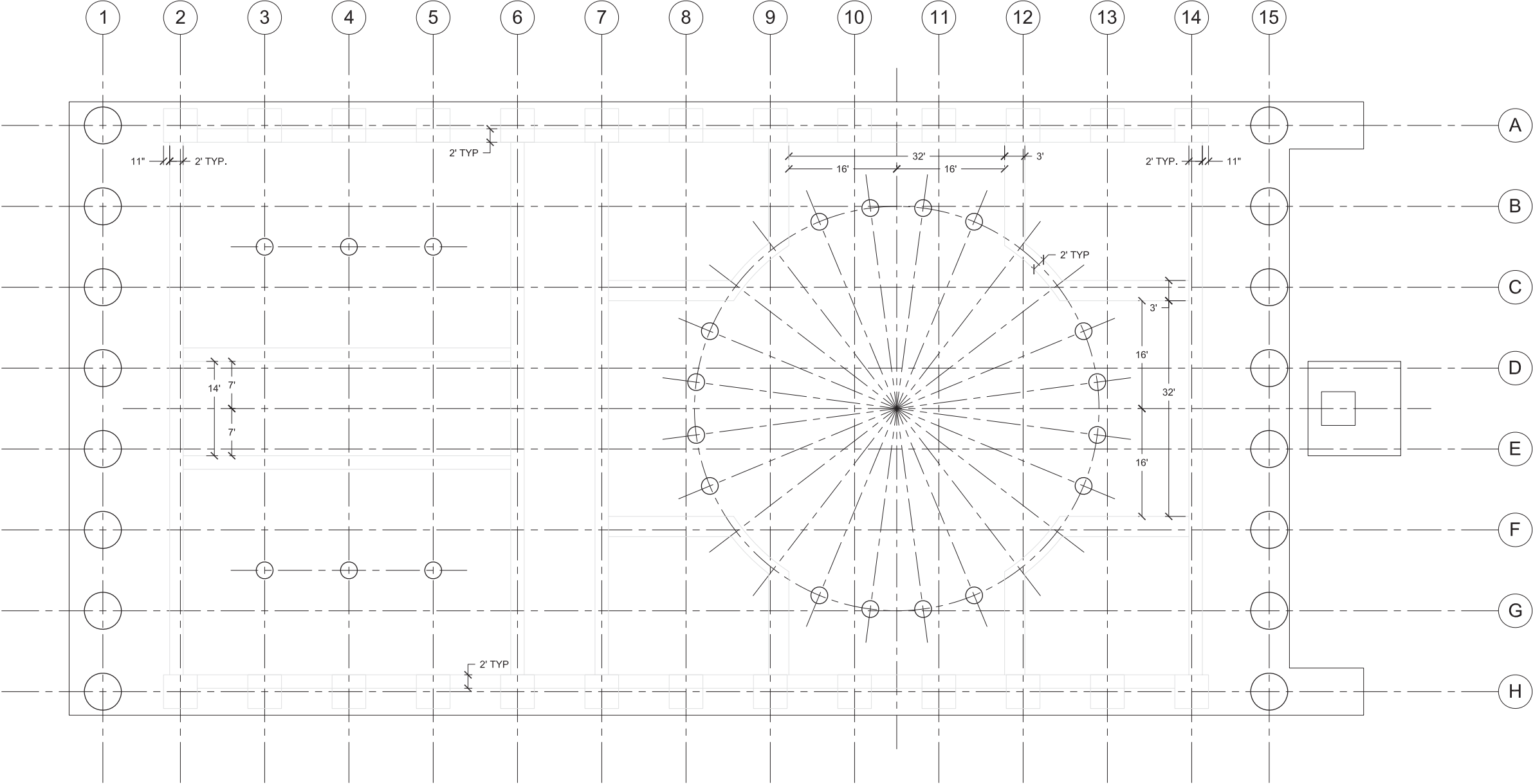
IDENTIFY KEY CENTERLINES AND LOCATE THE ROTUNDA - BEGIN LOCATING COLUMNS AT GRID INTERSECTIONS AND FINISH THE BASE

PLAN SETUP



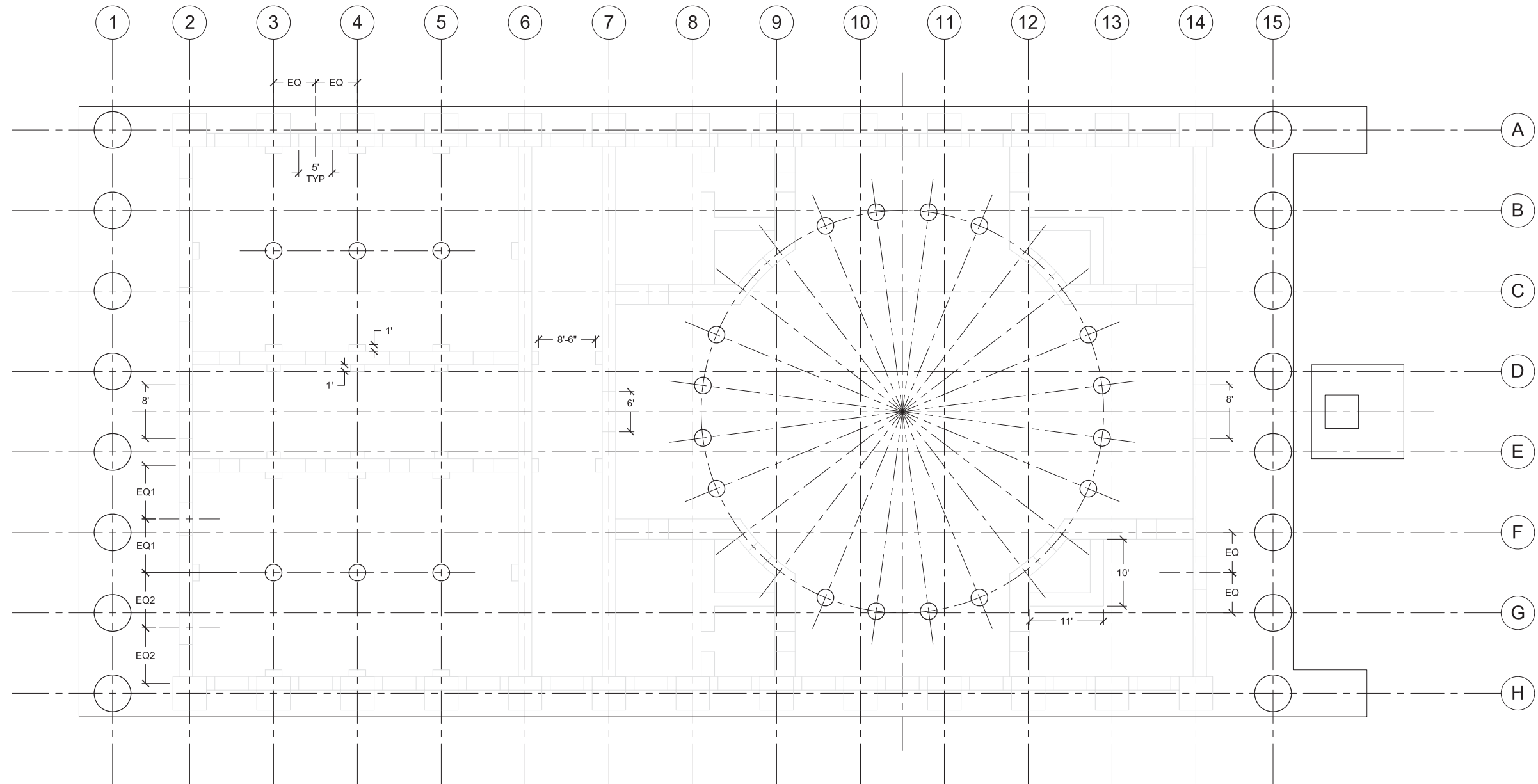
LAY OUT THE INTERIOR COLUMNS AND BEGIN SETTING UP THE 5'X5' COLUMNS AT THE EXTERIOR WALLS USING CONSTRUCTION LINES

PLAN SETUP



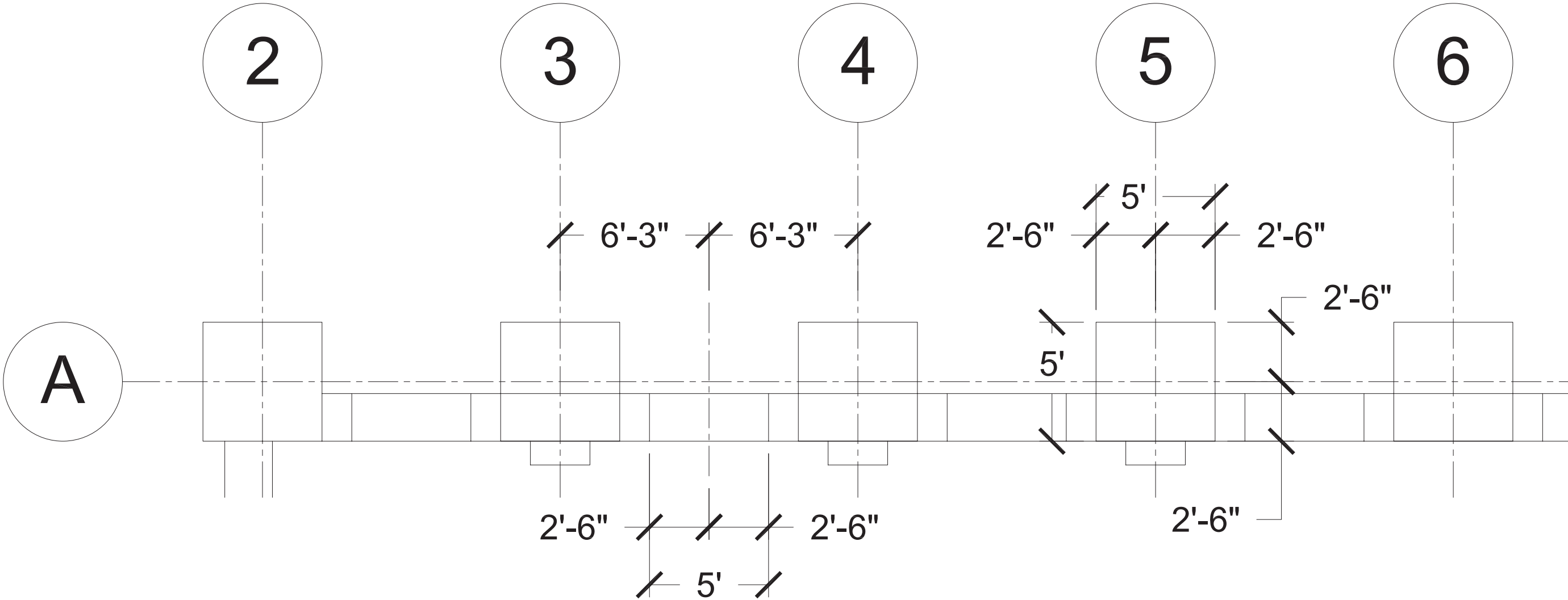
USING LIGHT CONSTRUCTION LINES, LOCATE INTERIOR AND EXTERIOR WALLS BASED ON DIMENSIONS GIVEN

PLAN SETUP



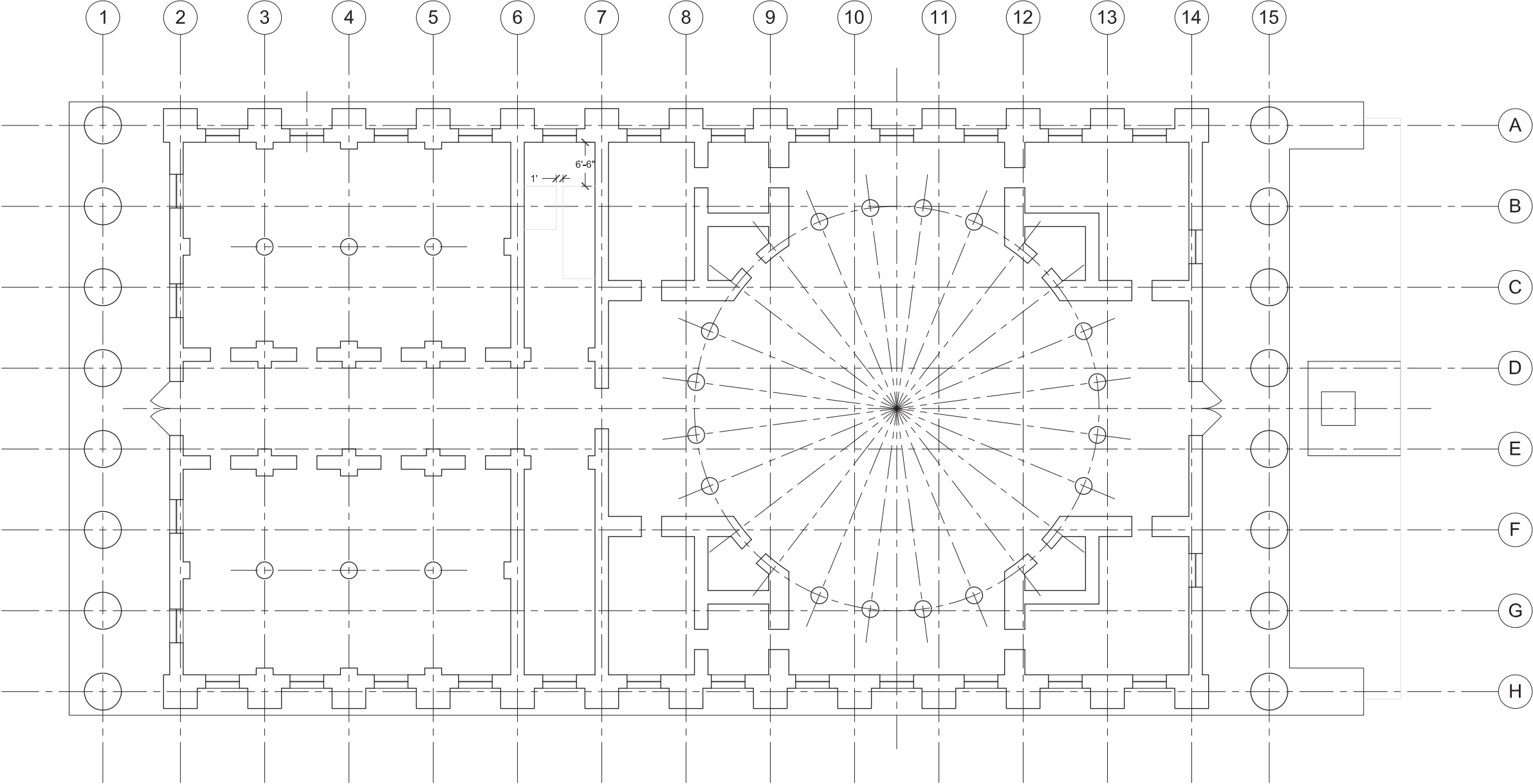
FINISH LAYING OUT INTERIOR PARTITIONS AND STRUCTURAL ELEMENTS, AND LOCATE DOOR AND WINDOW OPENINGS

PLAN SETUP



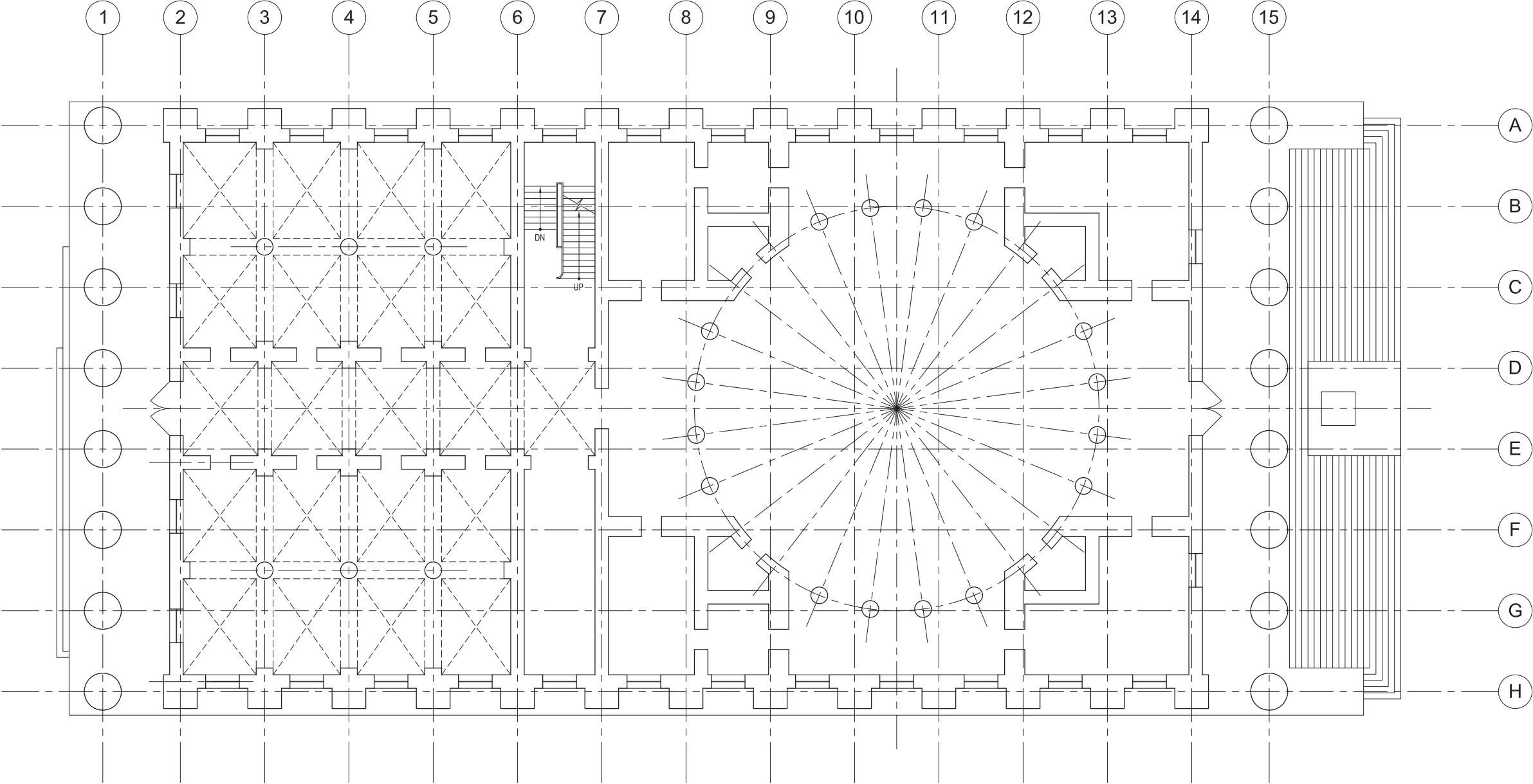
EXTERIOR WALL SETUP - USE YOUR GRIDS TO LOCATE EXTERIOR COLUMNS AND MAKE SURE TO CENTER WINDOWS

PLAN SETUP



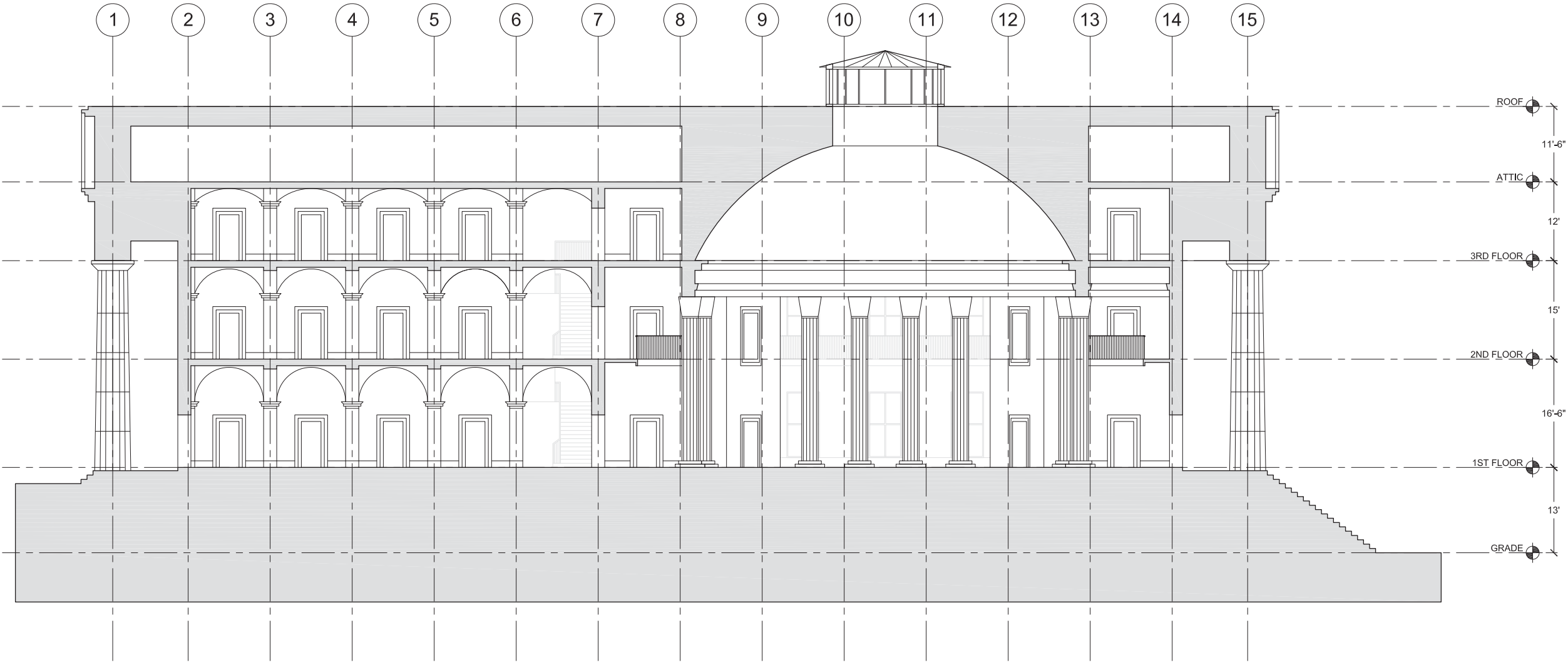
DARKEN ALL WALLS, DRAW DOORS AND WINDOWS, AND BEGIN TO BLOCK IN STAIRS

PLAN SETUP



FINISH STAIRS AND LIGHTLY DASH IN CEILING VAULTING... ALL DONE!

SECTION SETUP



NOW LET'S FIGURE OUT HOW TO GET HERE...