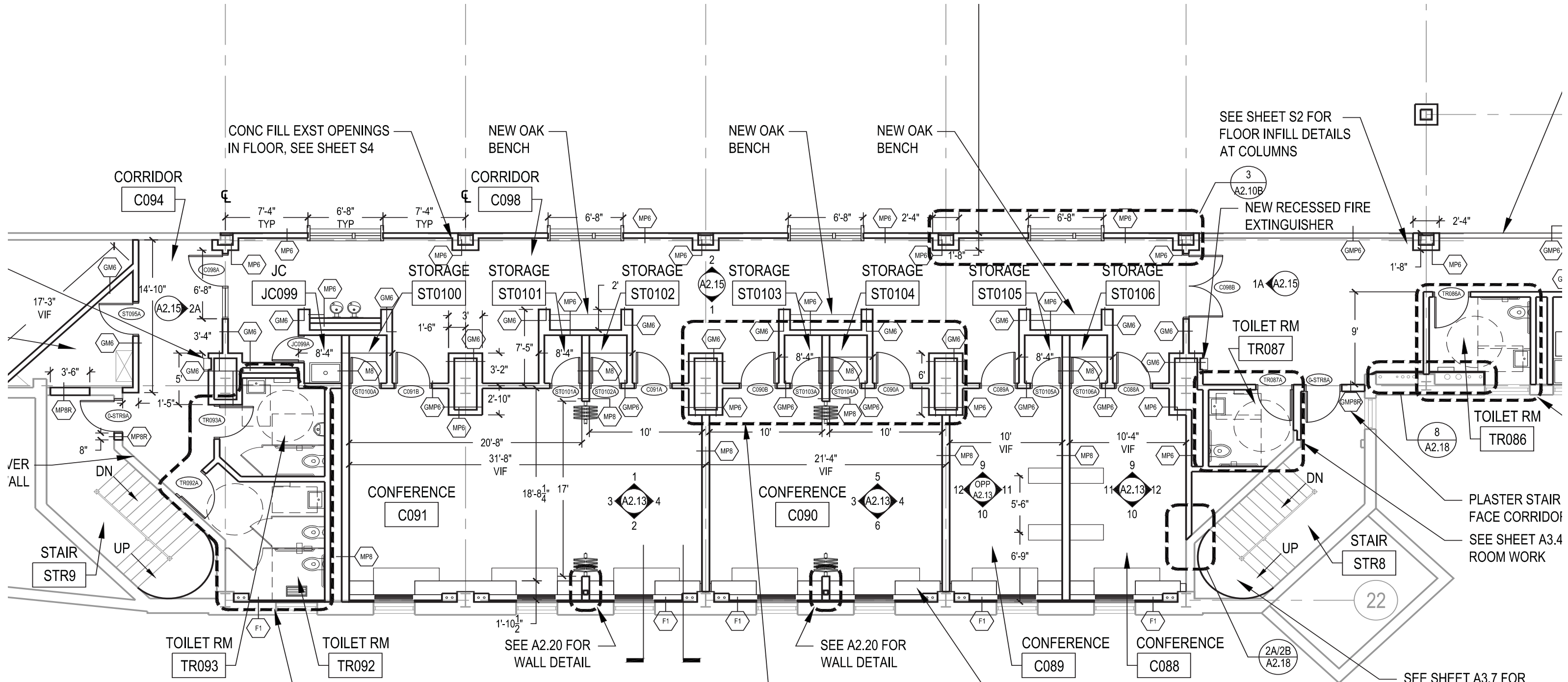


READING DRAWINGS



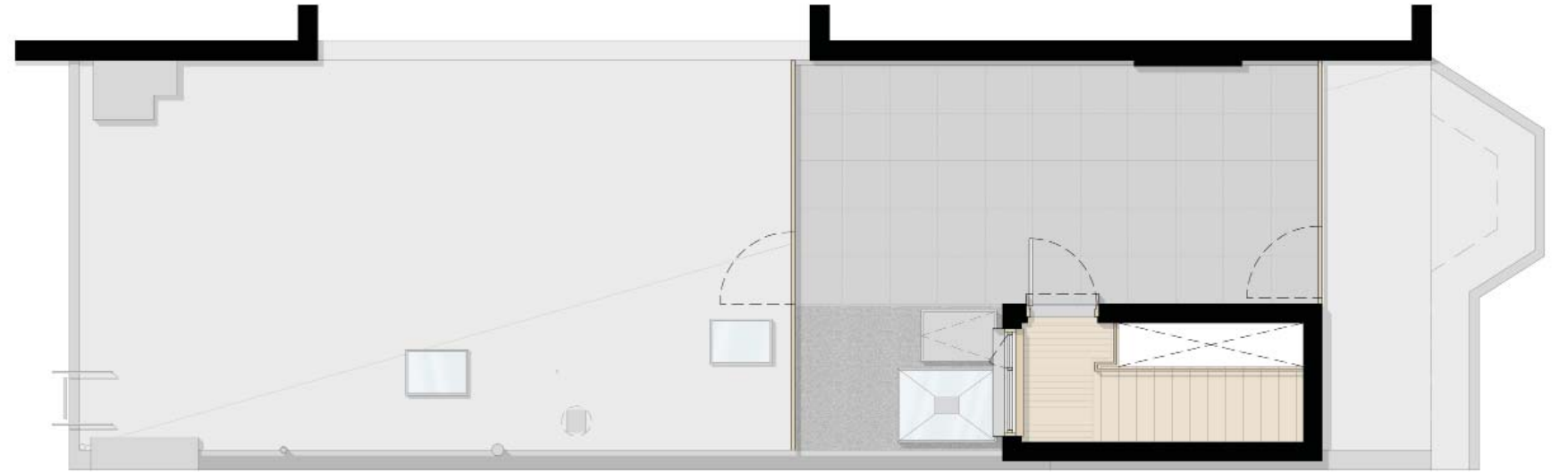
DESIGN / PRESENTATION DRAWINGS

- USED TO CONVEY DESIGN INTENT IN A WAY THAT IS EASY TO UNDERSTAND AND DIGEST, EVEN FOR PEOPLE WHO ARE NOT IN THE BUILDING INDUSTRY
- SHOULD BE CLEAR AND INTUITIVE
- MAY BE USEFUL FOR CONSTRUCTION, BUT TYPICALLY NOT SUFFICIENT
- CAN BE PLANS, SECTIONS, ELEVATIONS, OR 3D DRAWINGS / RENDERINGS

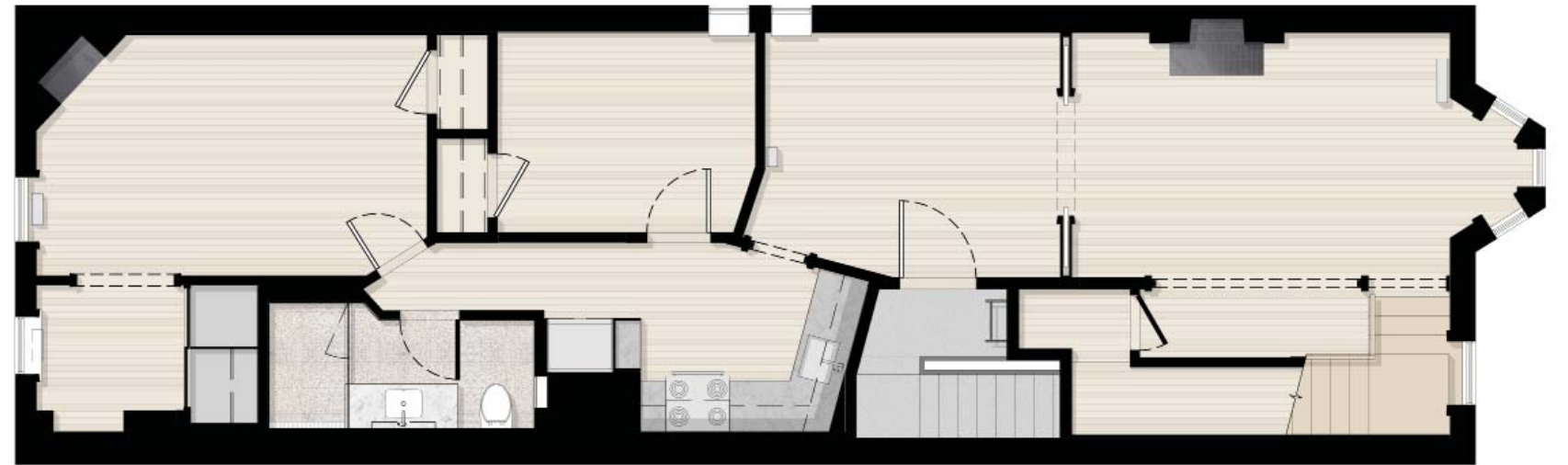


DESIGN / PRESENTATION DRAWINGS - FLOOR PLANS

- WHAT DO WE SEE IN THESE PLANS?
- HOW IS INFORMATION CONVEYED?



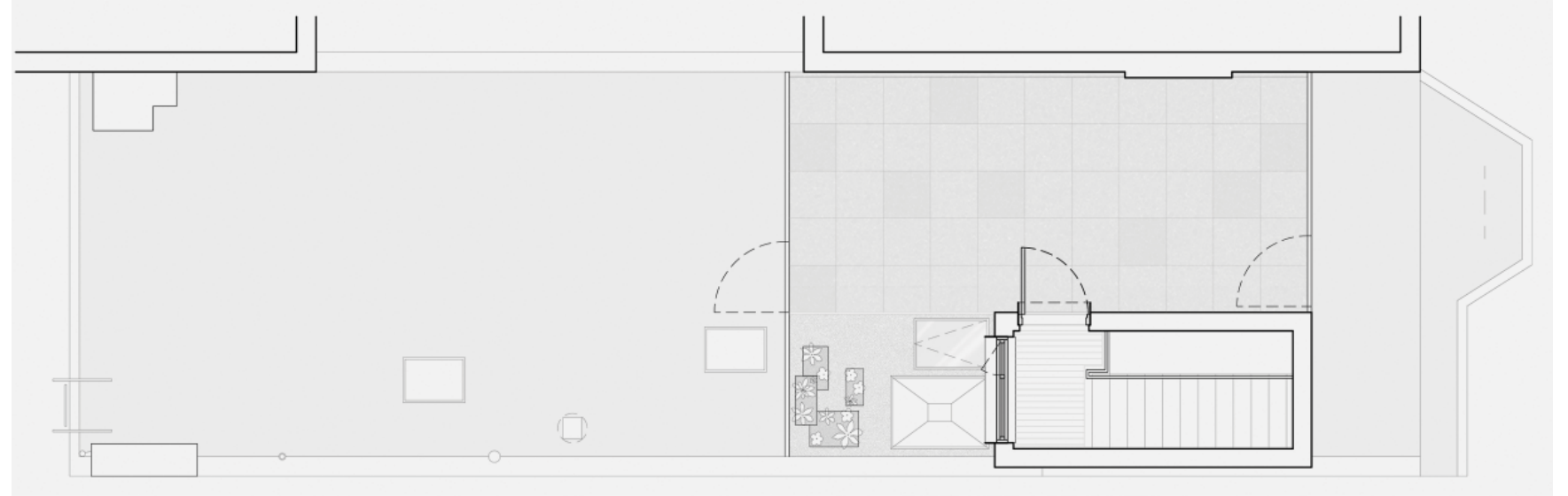
ROOF PLAN



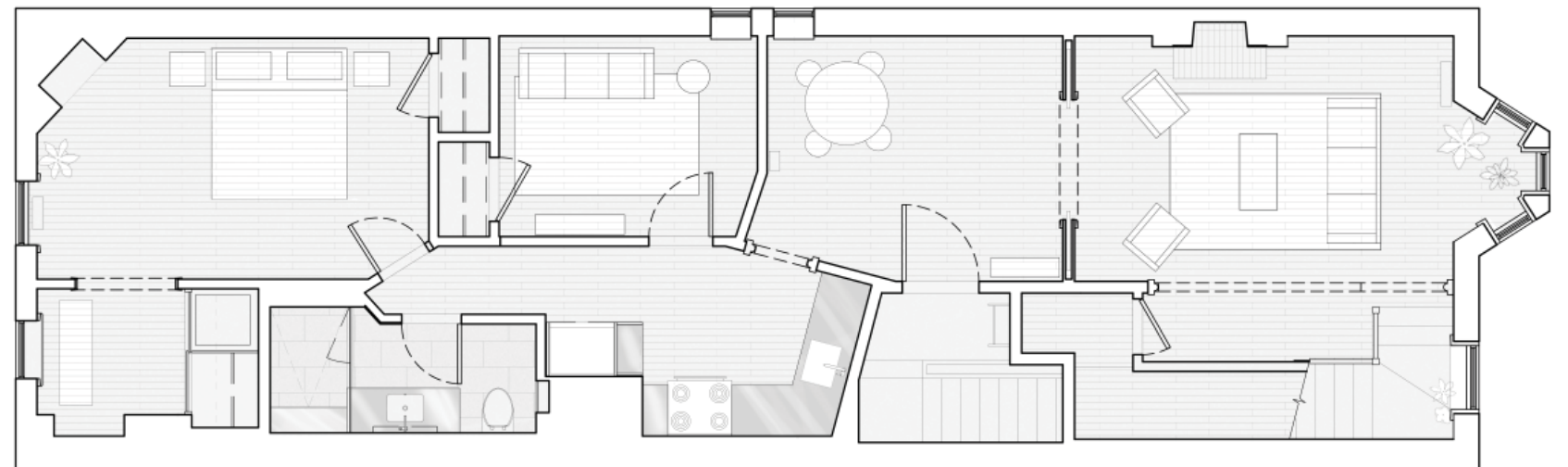
4TH FLOOR PLAN

DESIGN / PRESENTATION DRAWINGS - FLOOR PLANS

- WHAT ABOUT HERE?
- HOW ARE THESE DIFFERENT?



ROOF PLAN

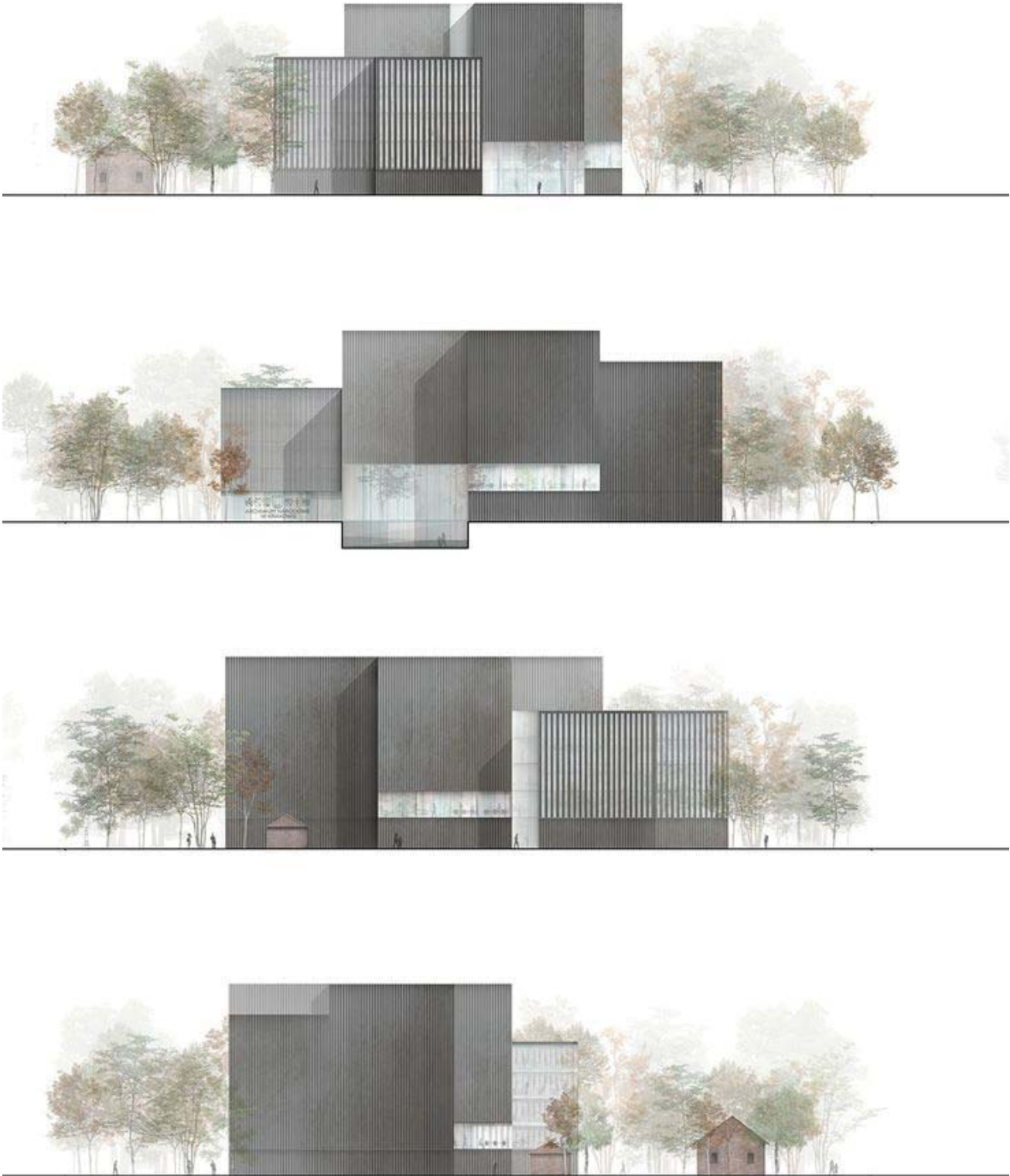


4TH FLOOR PLAN

DESIGN / PRESENTATION DRAWINGS - SECTIONS / ELEVATIONS

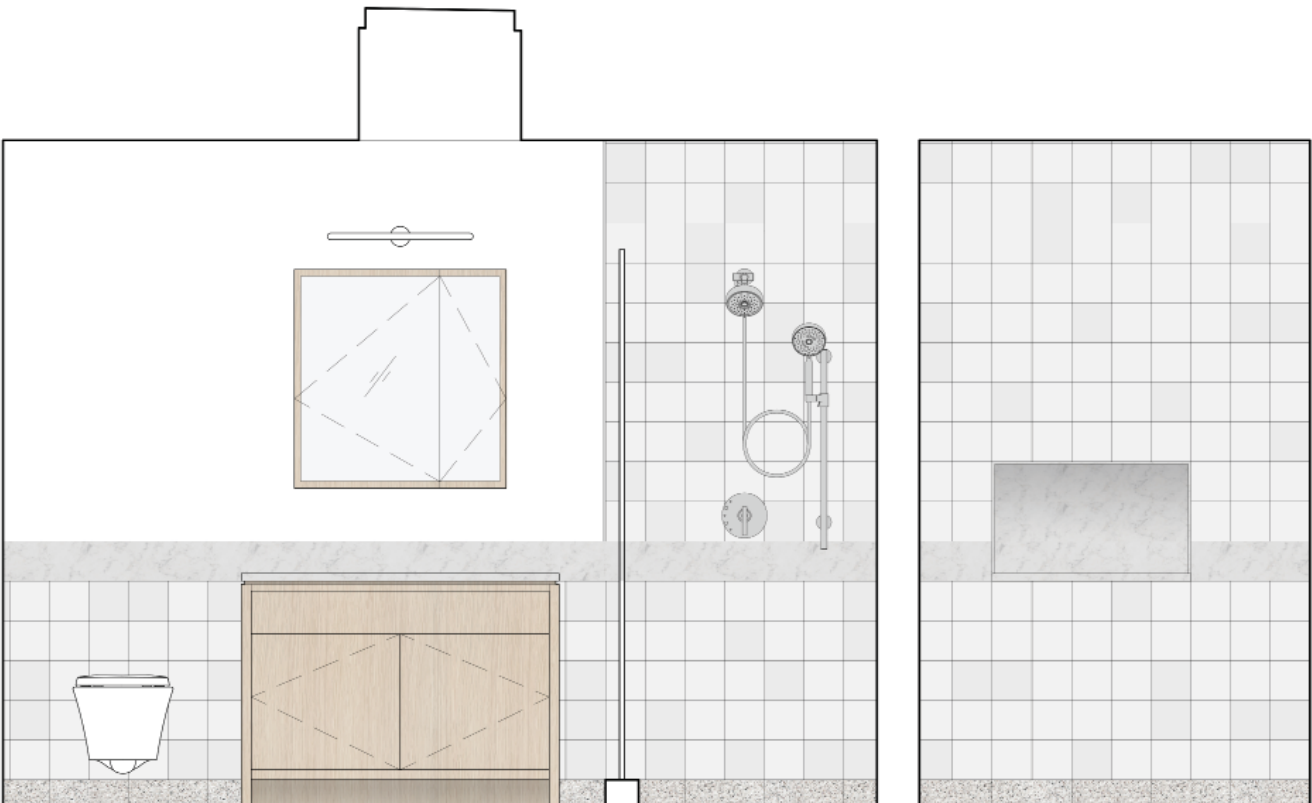
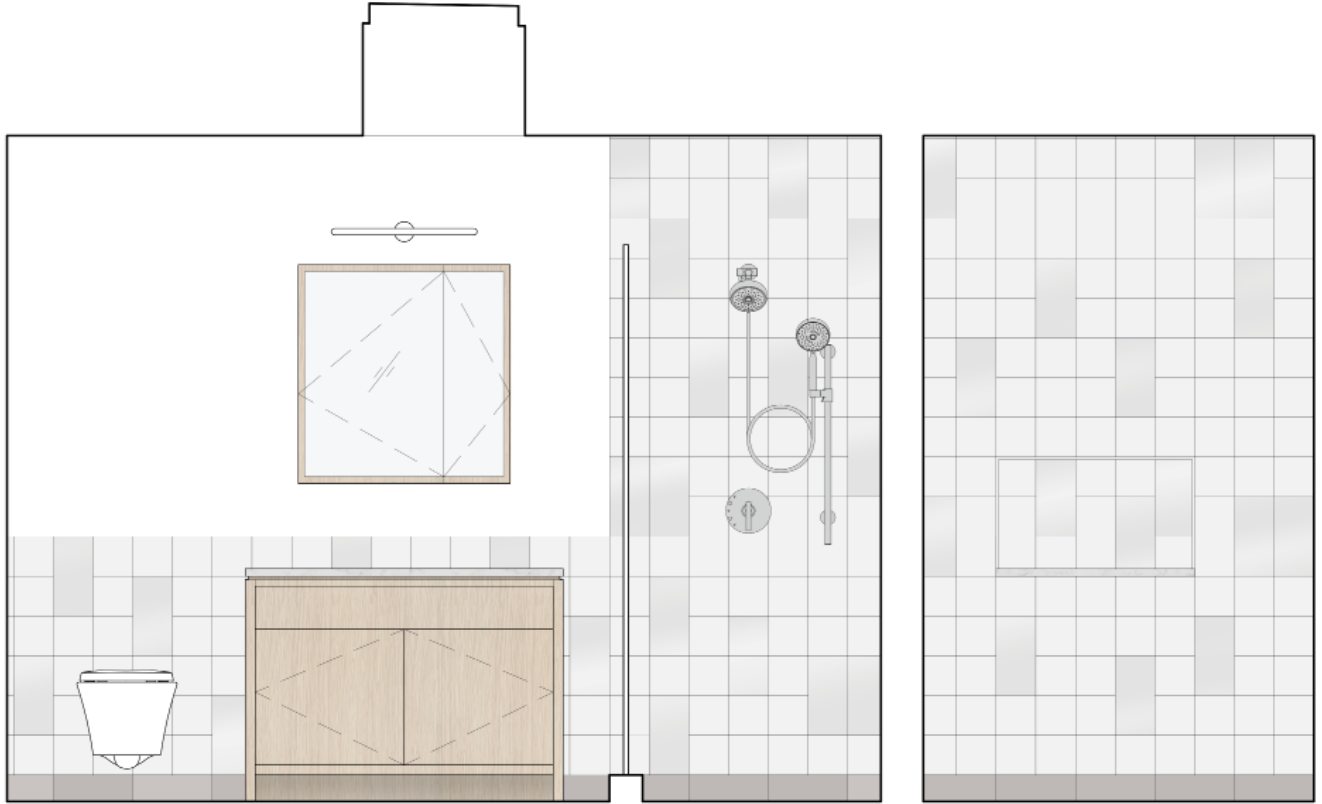


HIGH RISE SECTION



ELEVATIONS

DESIGN / PRESENTATION DRAWINGS - INTERIOR ELEVATIONS

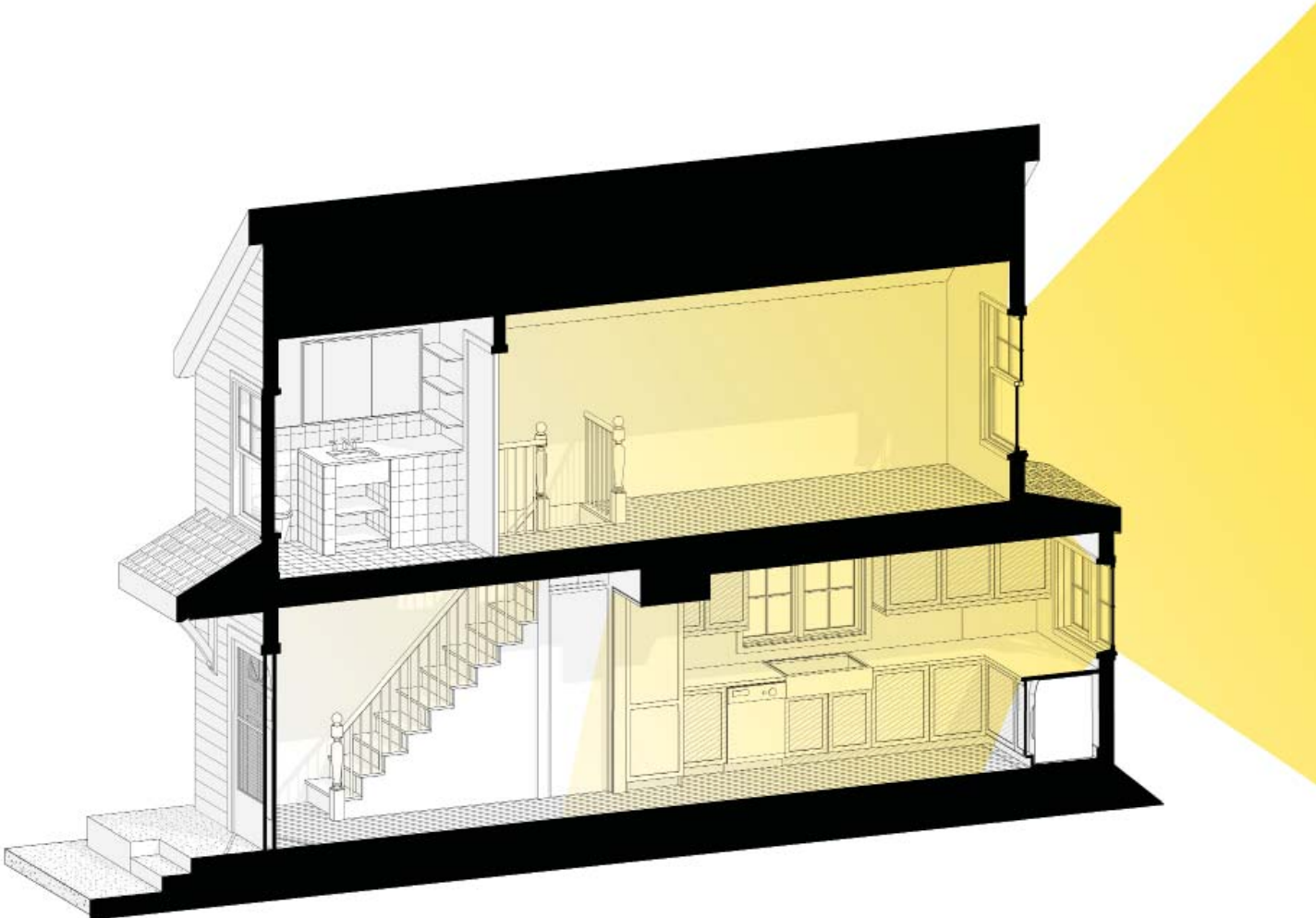


INTERIOR ELEVATIONS

DESIGN / PRESENTATION DRAWINGS - 3D AXON

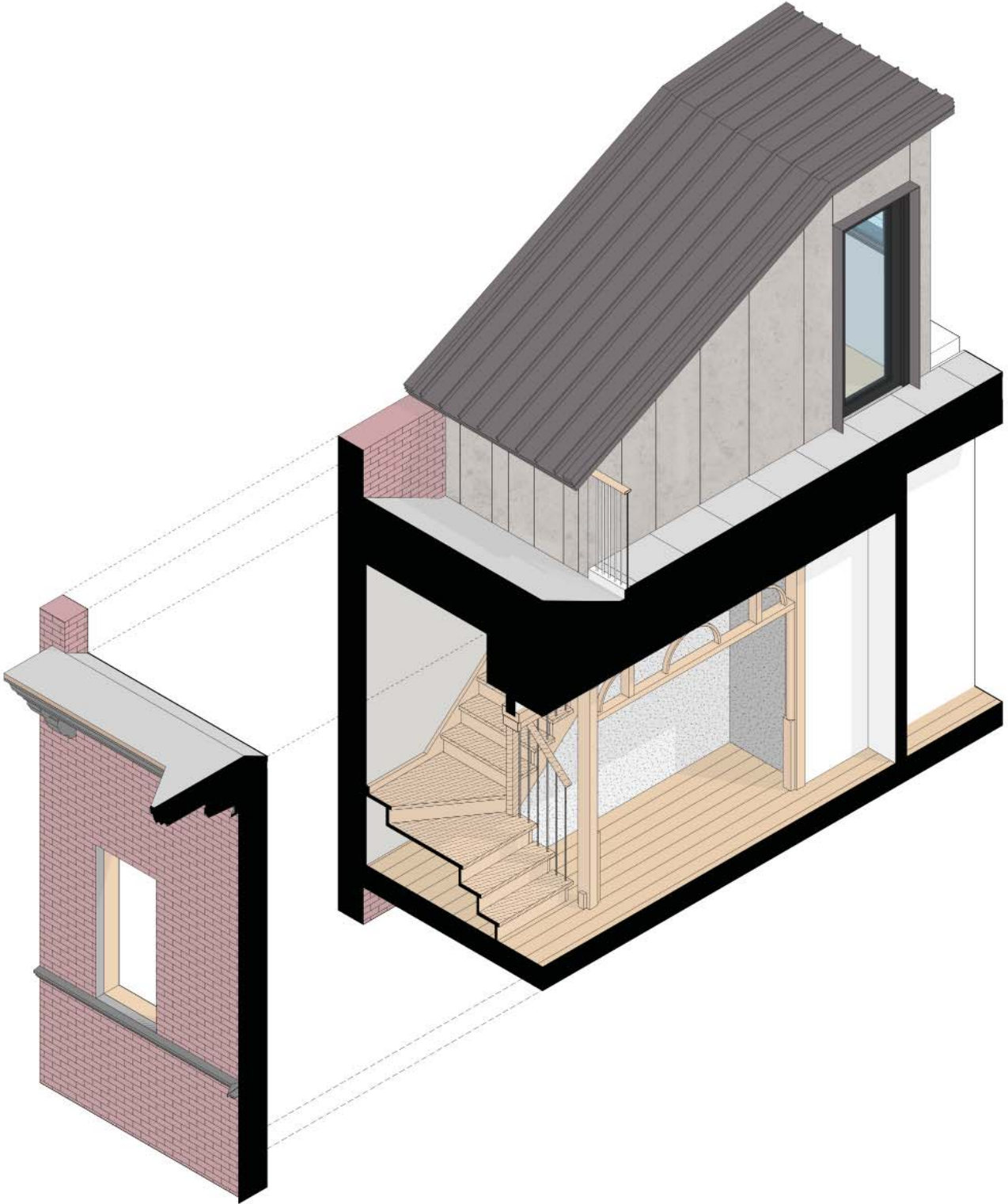


EXISTING



PROPOSED

DESIGN / PRESENTATION DRAWINGS - 3D AXON



DESIGN / PRESENTATION DRAWINGS - 3D PERSPECTIVE



RENDERINGS

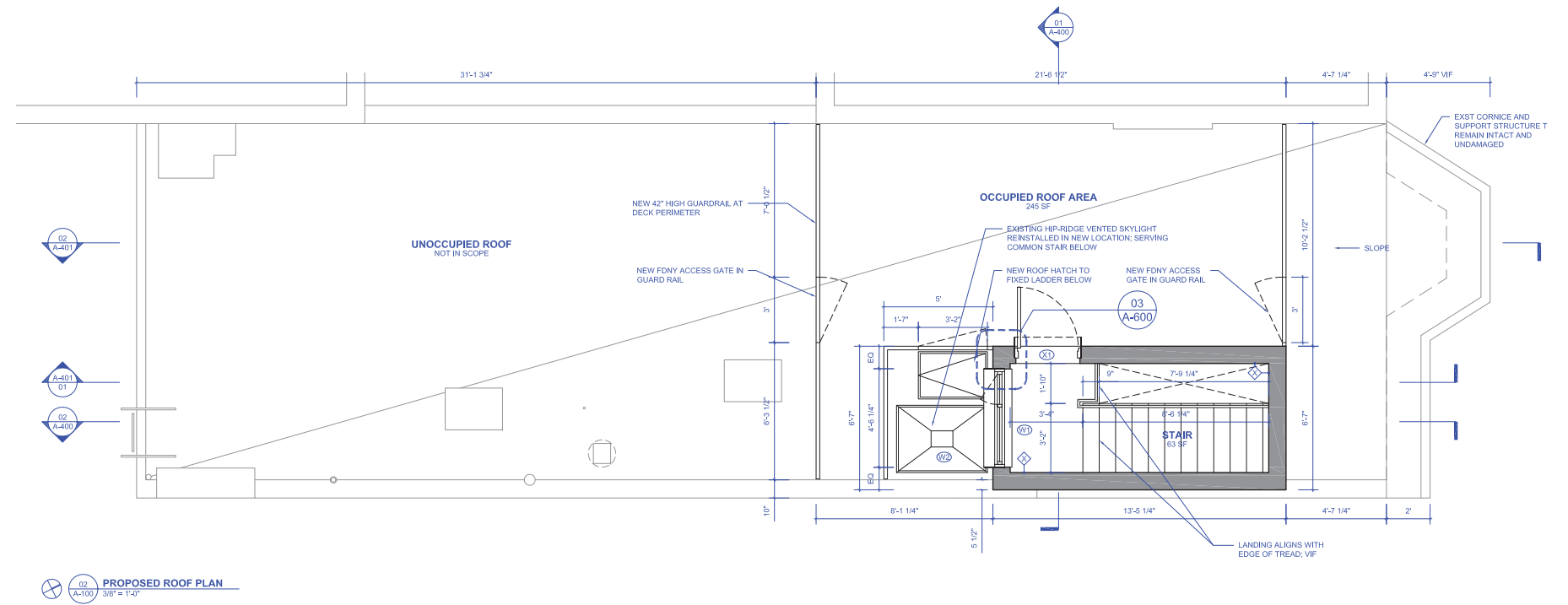
TECHNICAL / CONSTRUCTION DRAWINGS

- USED TO CONVEY DESIGN INTENT IN A WAY THAT IS VERY SPECIFIC, AND IS INTENDED FOR USE BY CONTRACTORS / BUILDERS
- USES STANDARD CONVENTIONS UNDERSTOOD ACROSS THE INDUSTRY
- USEFUL FOR CONSTRUCTION, BUT MAY BE DIFFICULT TO UNDERSTAND FOR THOSE NOT FAMILIAR WITH THE INDUSTRY
- CAN BE PLANS, SECTIONS, ELEVATIONS, OR 3D DRAWINGS / RENDERINGS

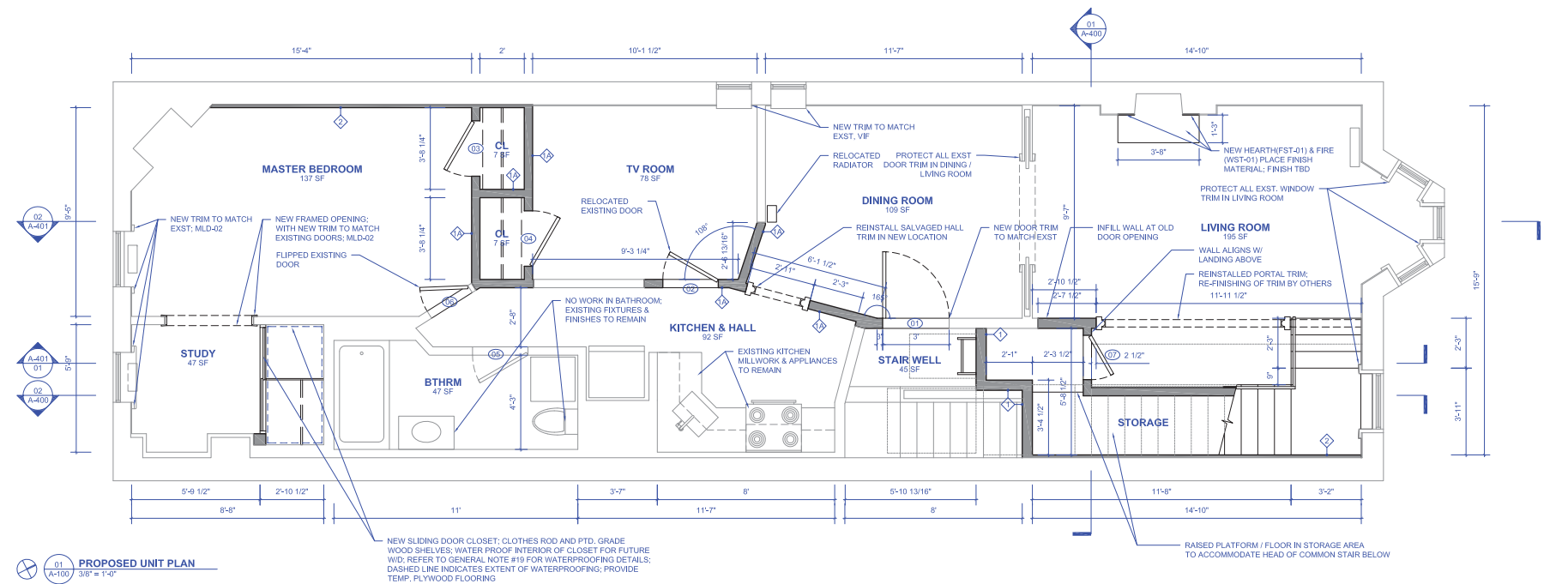


TECHNICAL / CONSTRUCTION DRAWINGS - FLOOR PLANS

- WHAT DO WE SEE IN THESE PLANS?
- HOW IS INFORMATION CONVEYED?

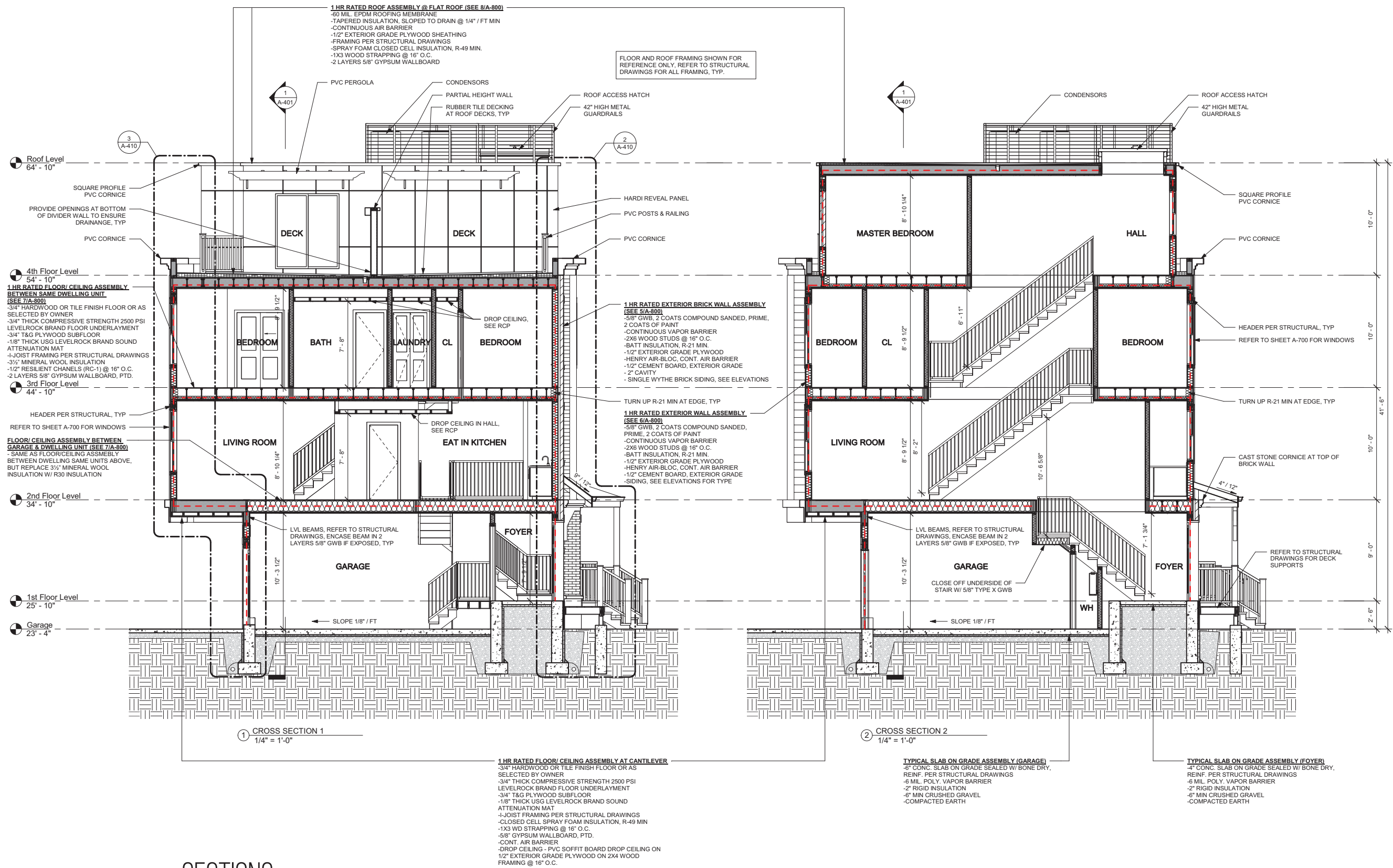


ROOF PLAN



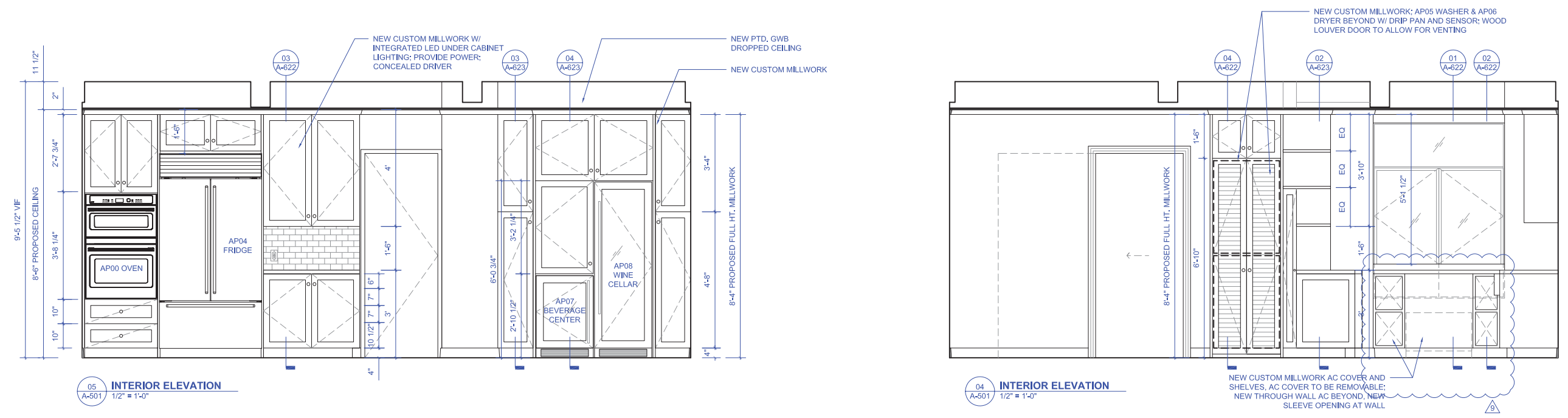
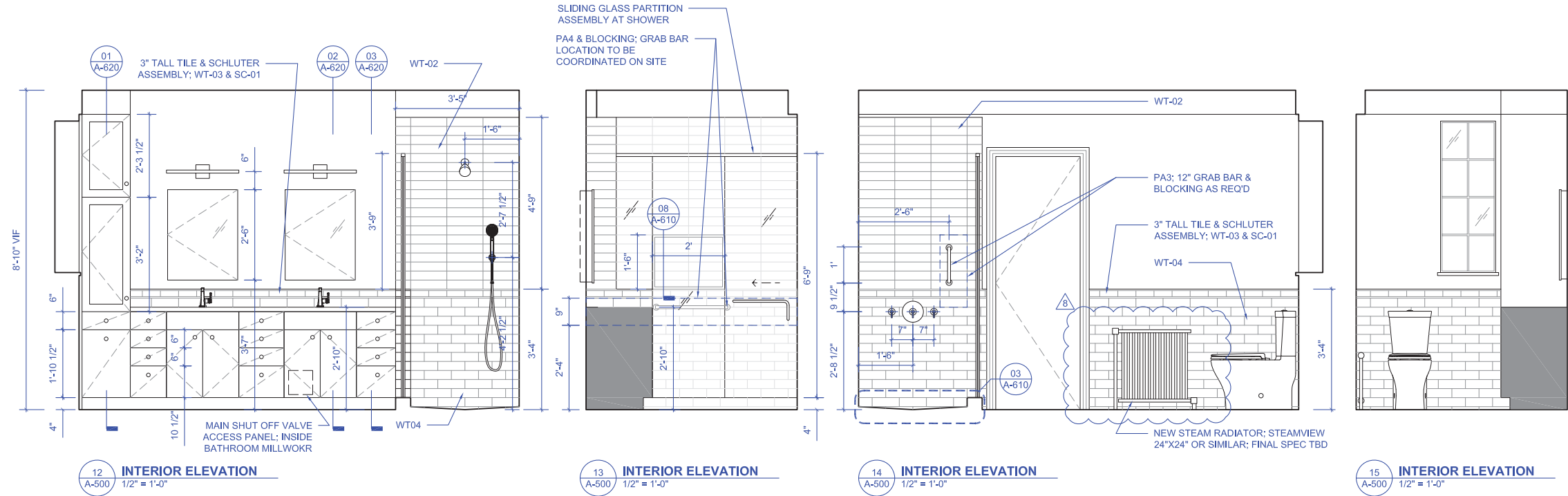
4TH FLOOR PLAN

TECHNICAL / CONSTRUCTION DRAWINGS- SECTIONS



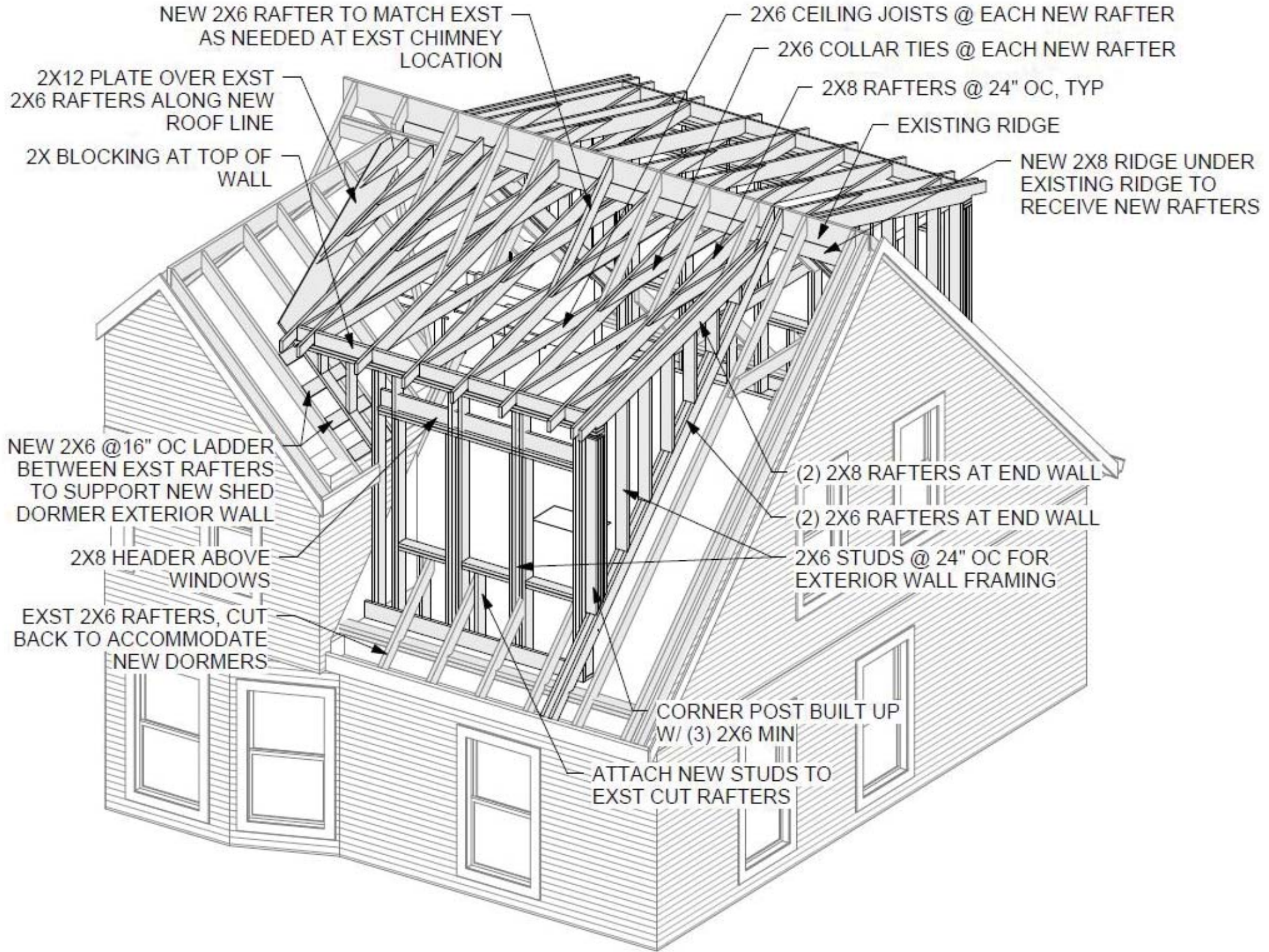
SECTIONS

TECHNICAL / CONSTRUCTION DRAWINGS - INTERIOR ELEVATIONS



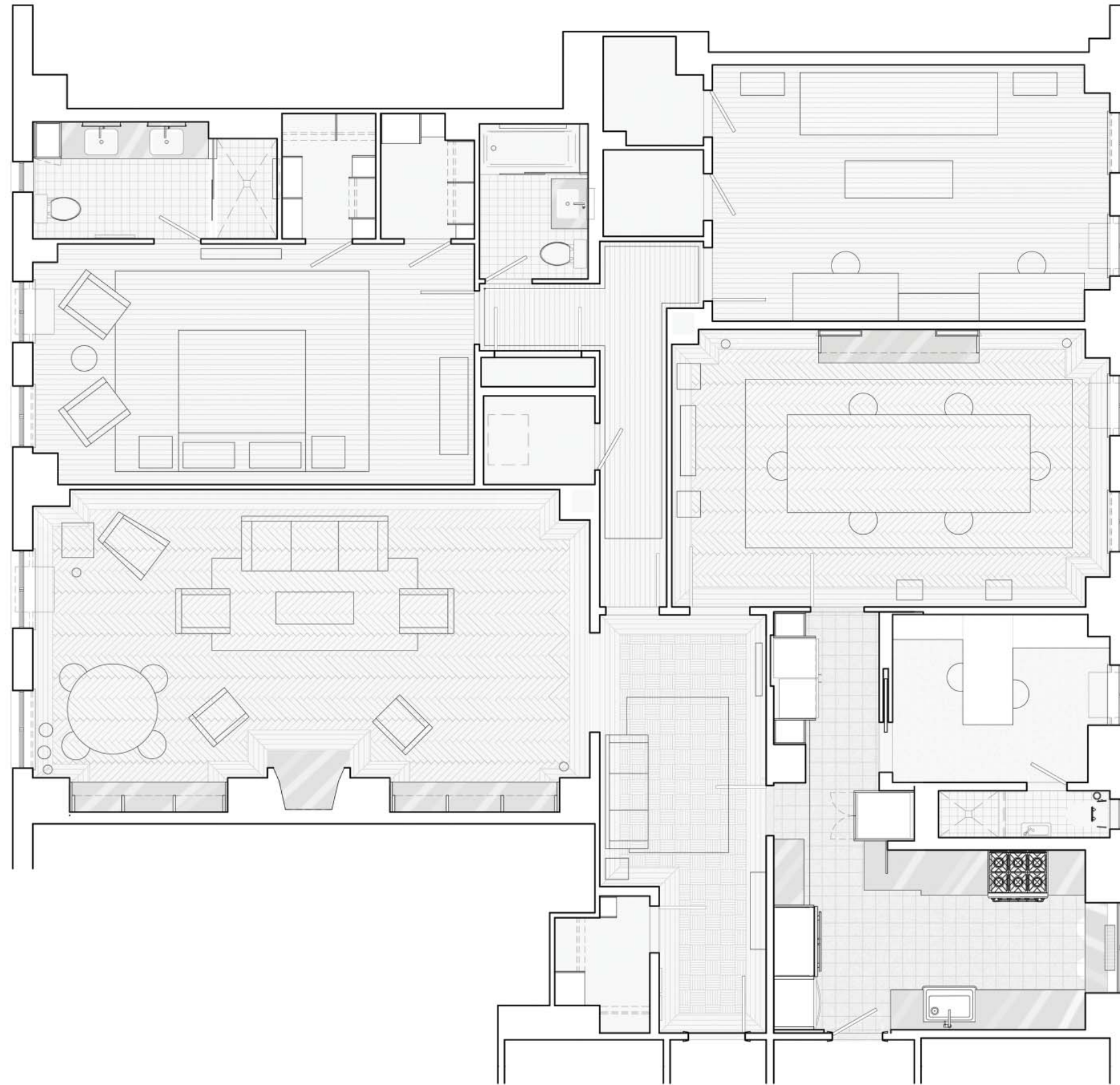
INTERIOR ELEVATIONS

TECHNICAL / CONSTRUCTION DRAWINGS - 3D AXON

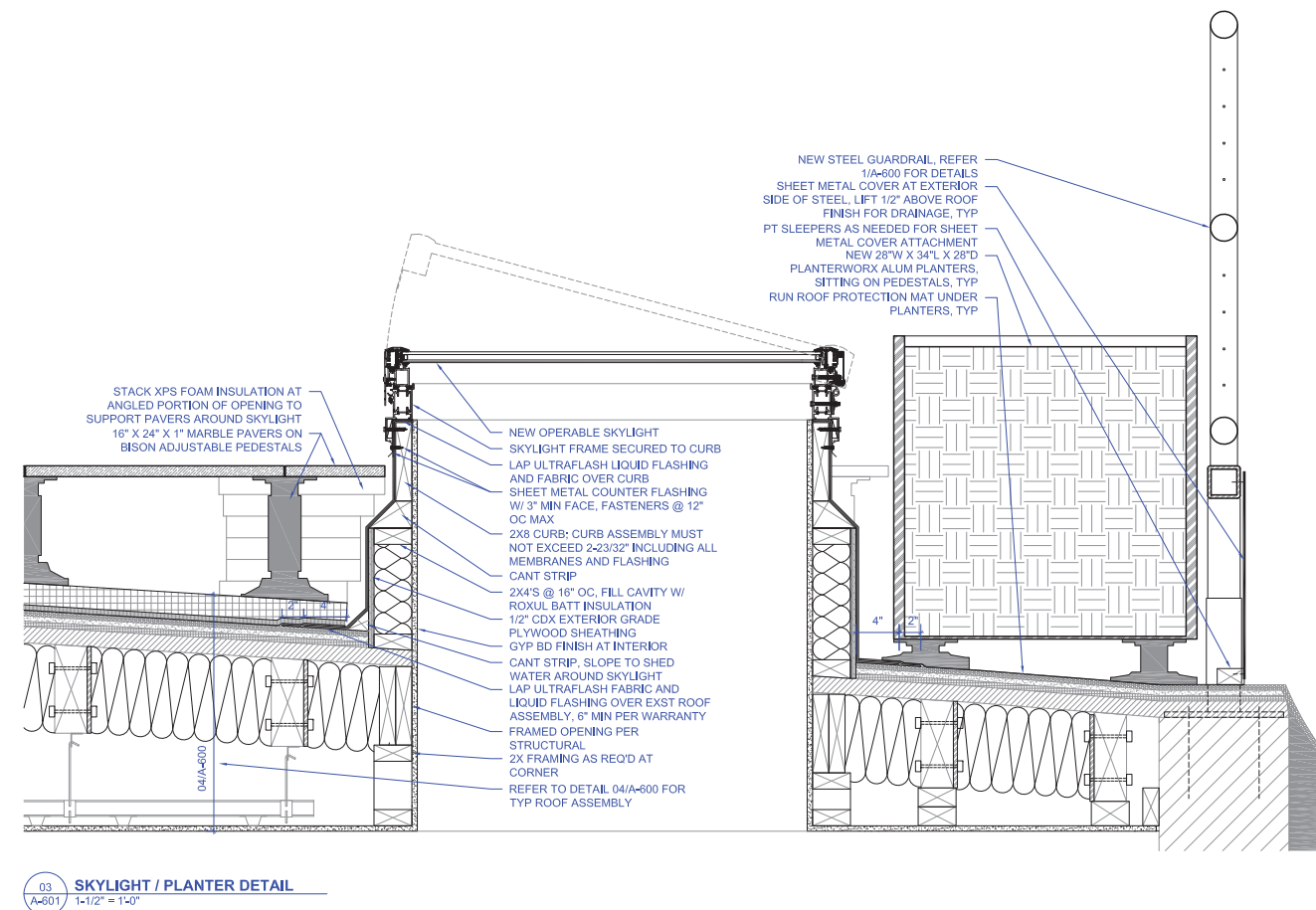
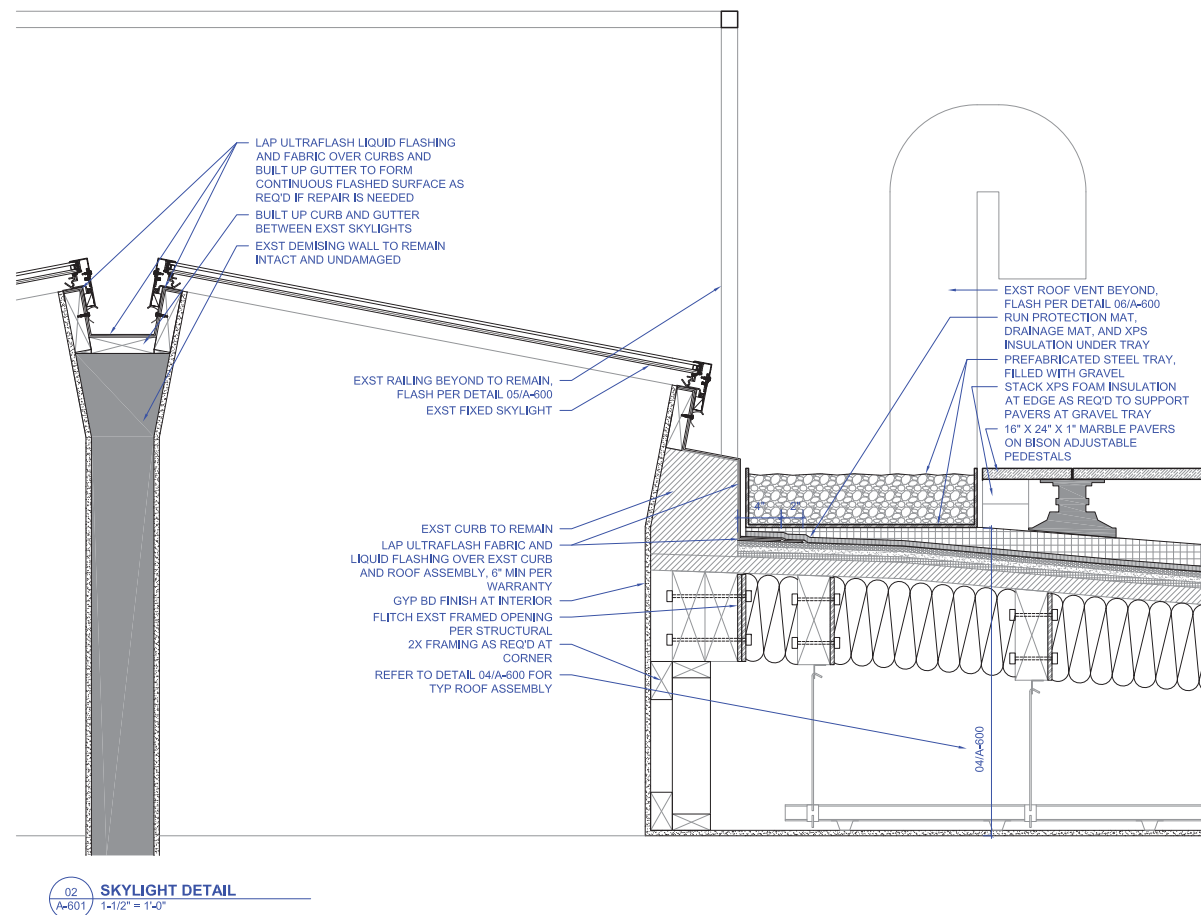
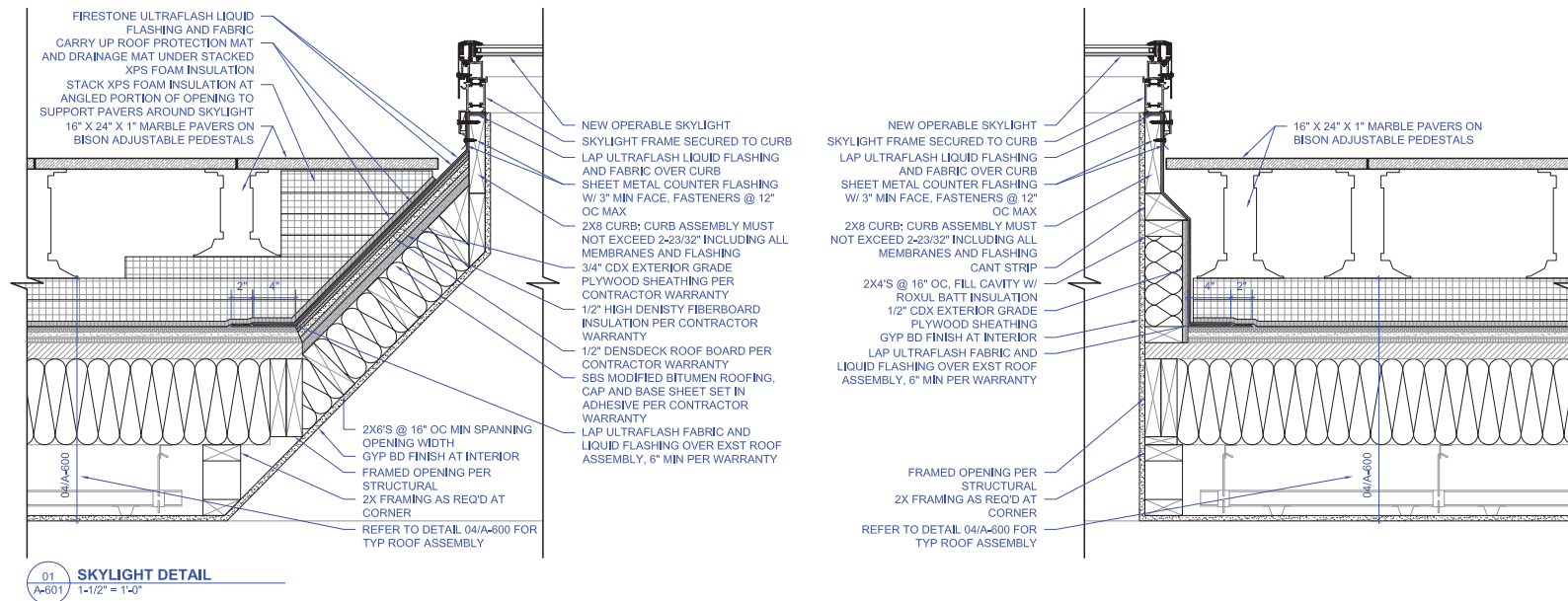


STRUCTURAL AXON

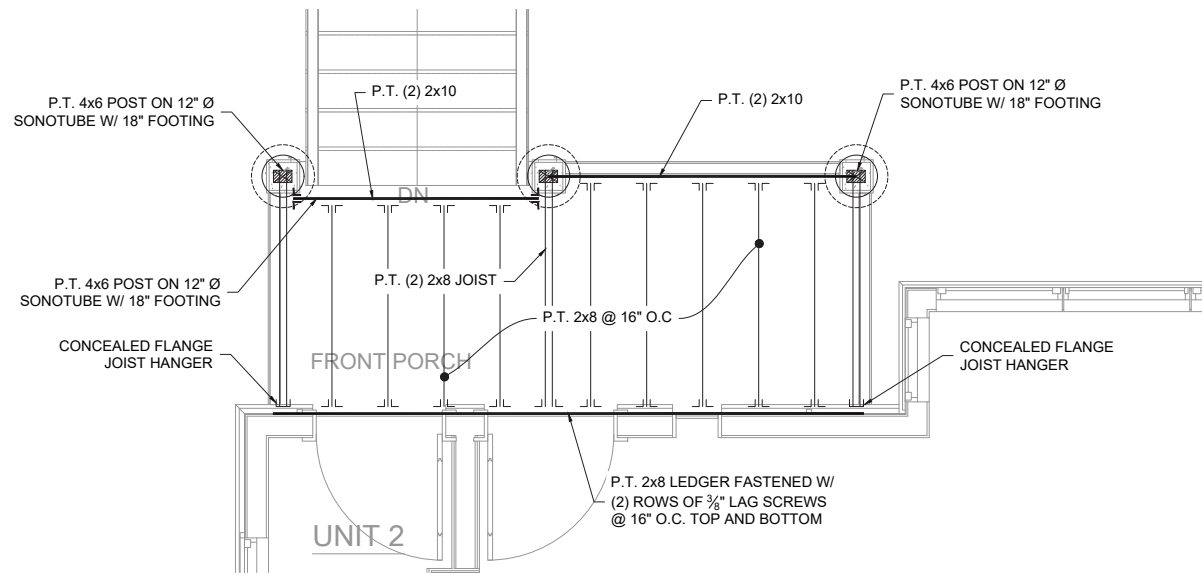
TECHNICAL OR PRESENTATION?



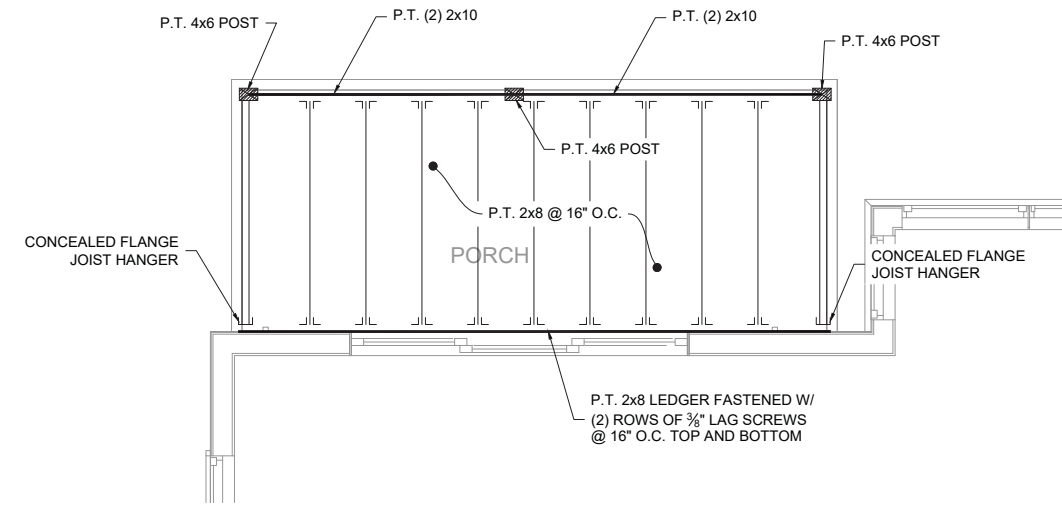
TECHNICAL OR PRESENTATION?



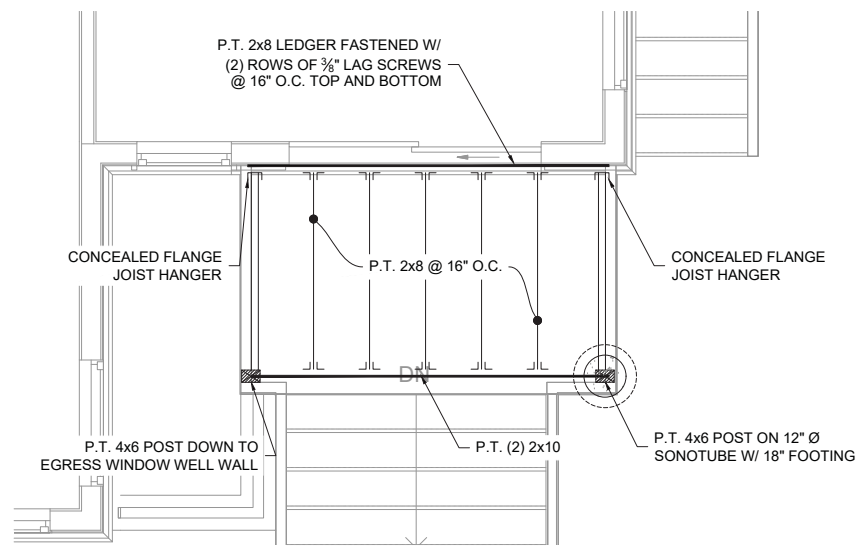
TECHNICAL OR PRESENTATION?



① **FRONT PORCH FRAMING**
1/2" = 1'-0"



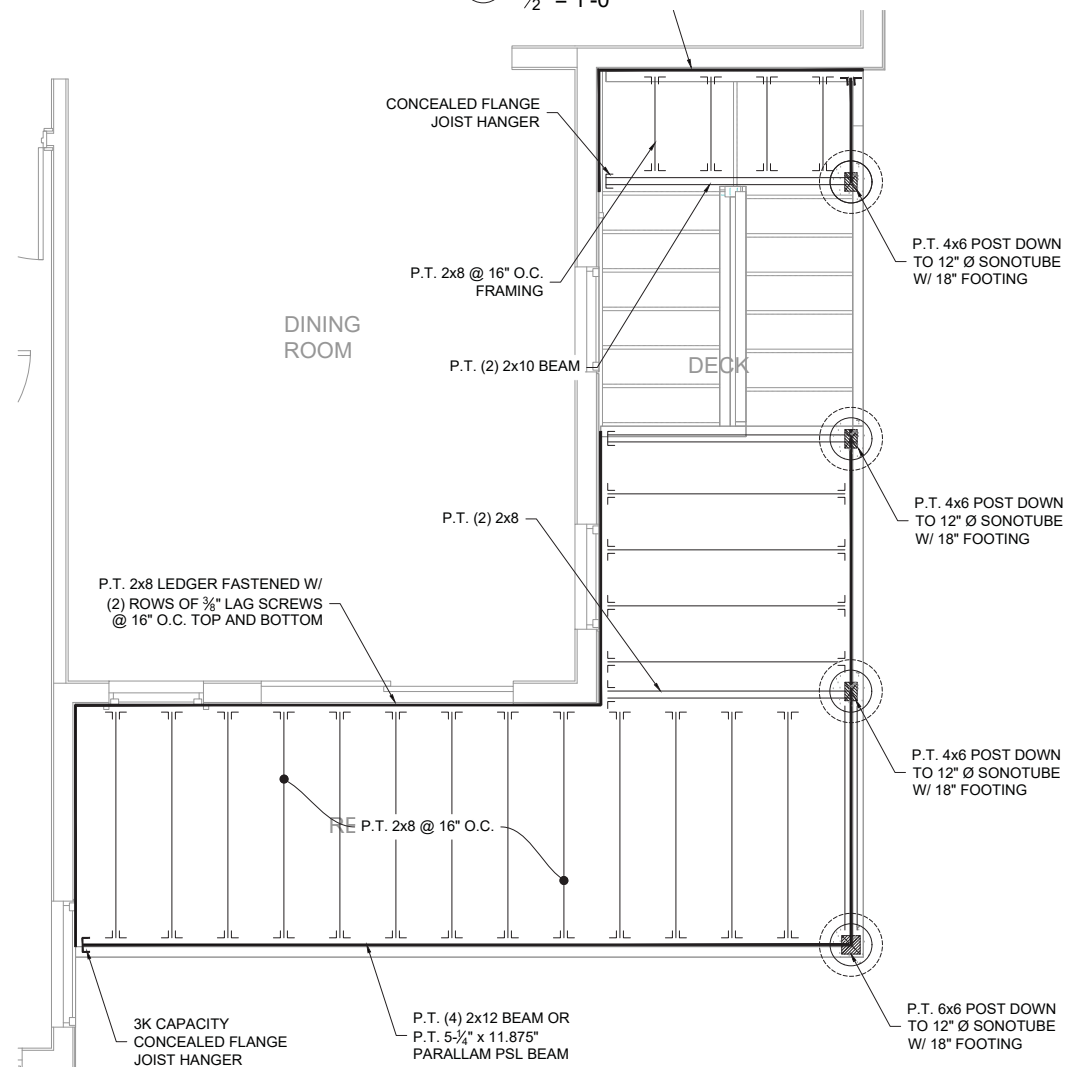
② **FRONT PORCH ROOF FRAMING**
1/2" = 1'-0"



③ **REAR DECK FRAMING**
1/2" = 1'-0"

DECK NOTES:

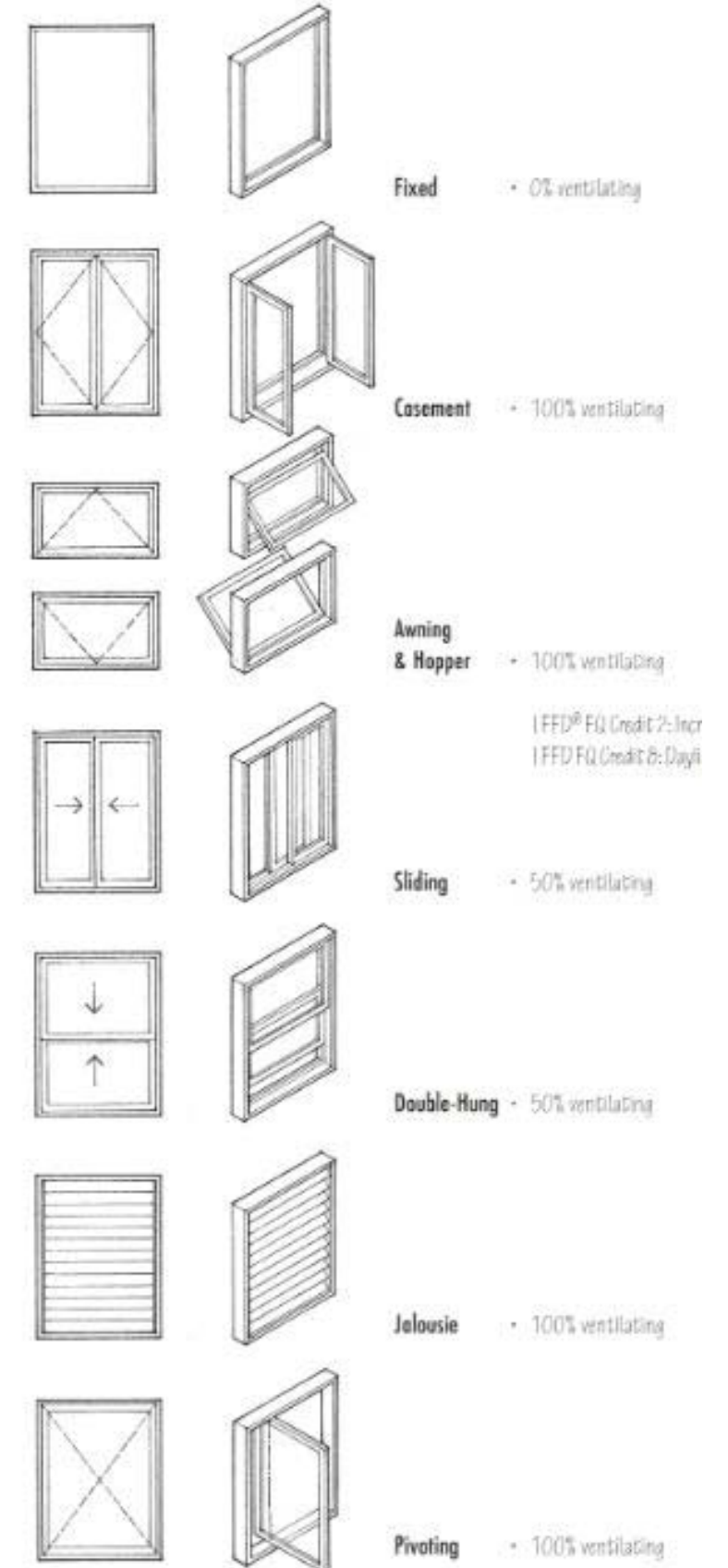
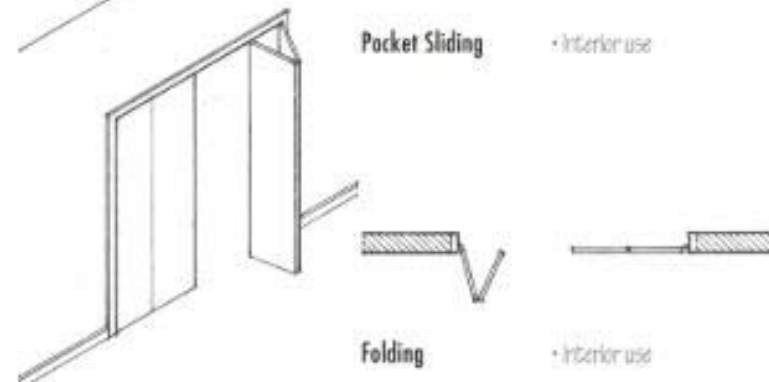
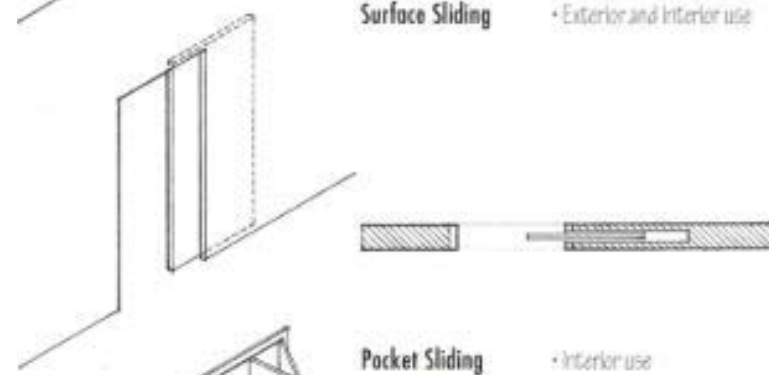
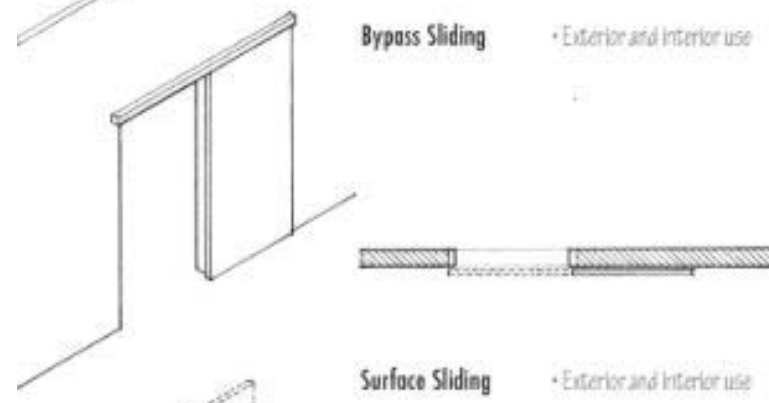
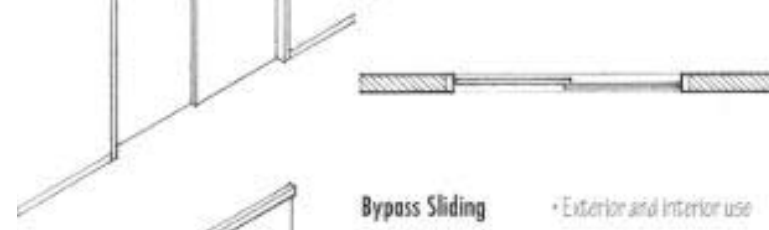
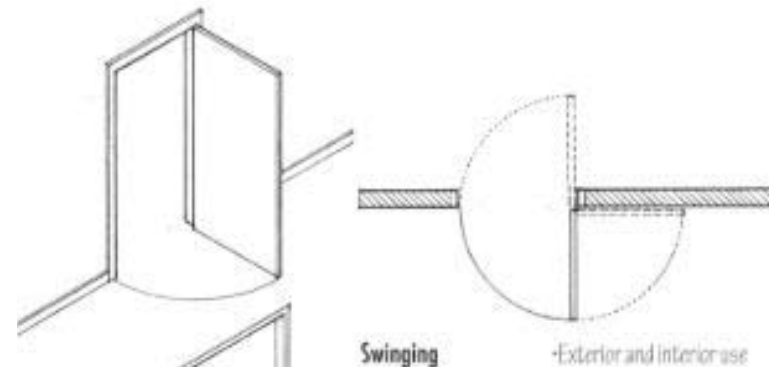
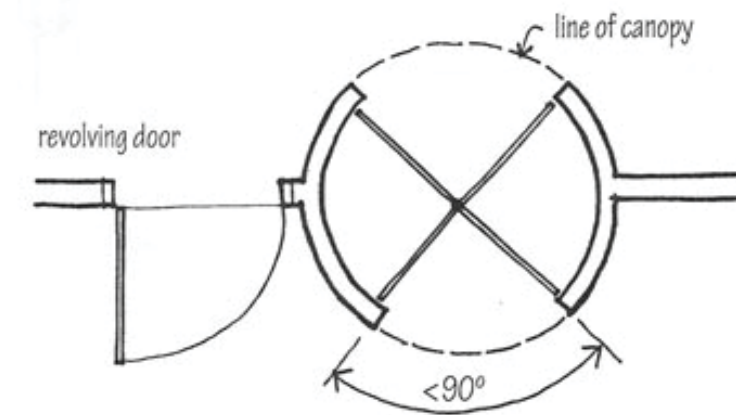
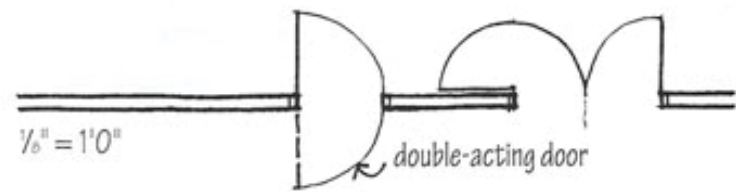
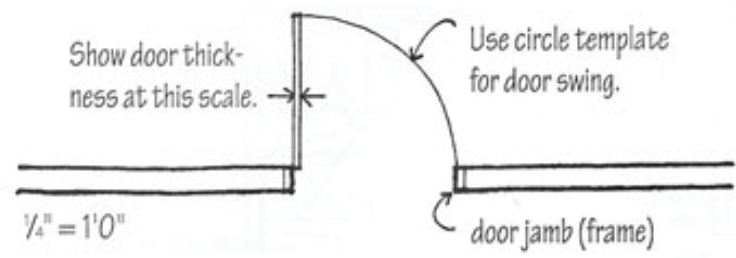
1. All wood to be pressure treated, construction grade or better. All connectors to be galvanized.
2. Concrete shall be f'c = 3000 psi.
3. Deck boards shall be attached to each joist with two nails or deck screws.
4. Provide hold-down tension device min. capacity 750 lb. at 4 locations evenly distributed along each side of the deck with 1 within 2' of each end of the ledger.



TECHNICAL OR PRESENTATION?

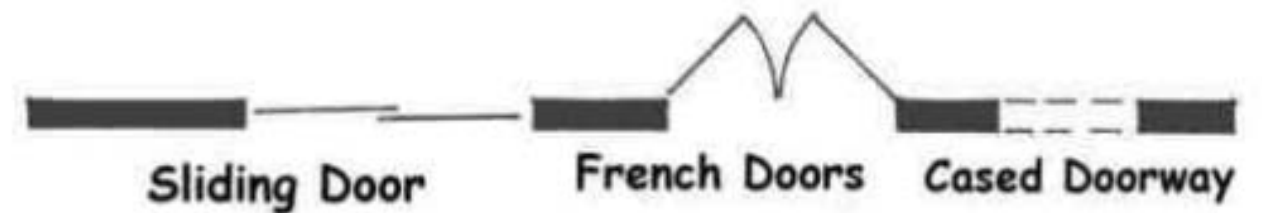
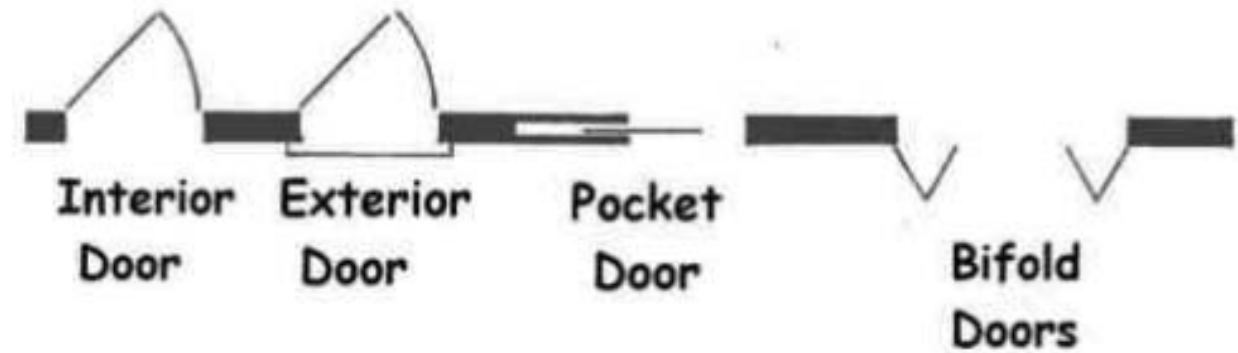
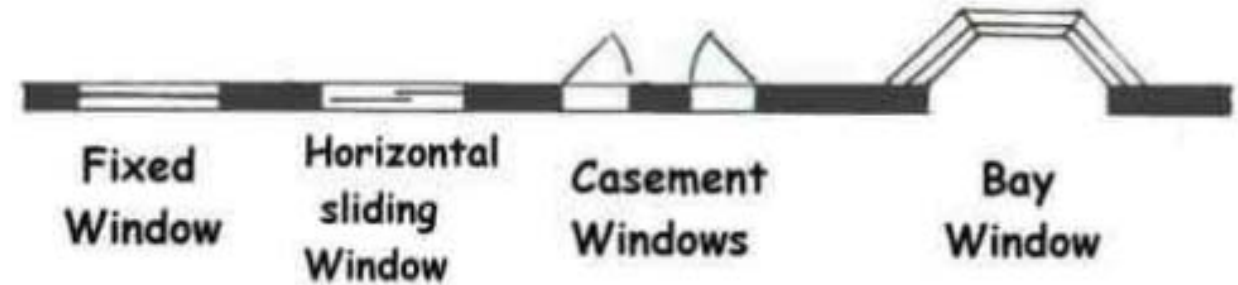
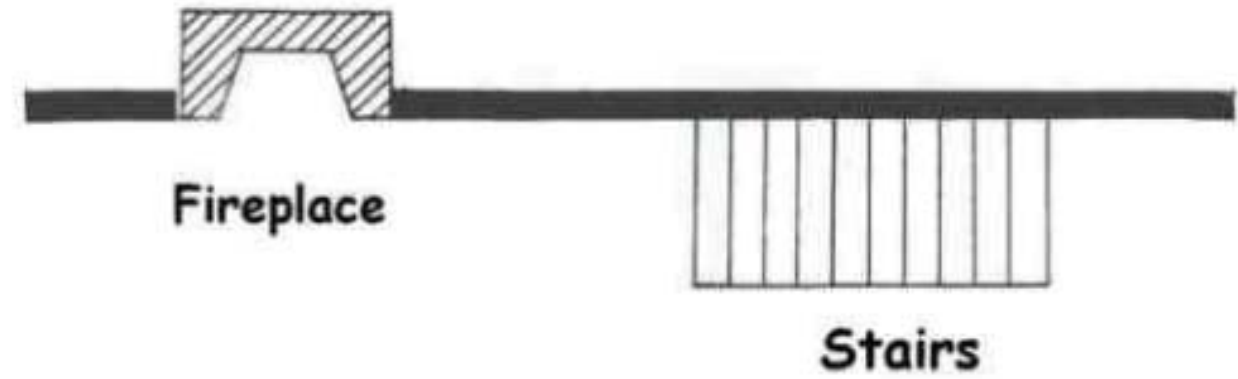
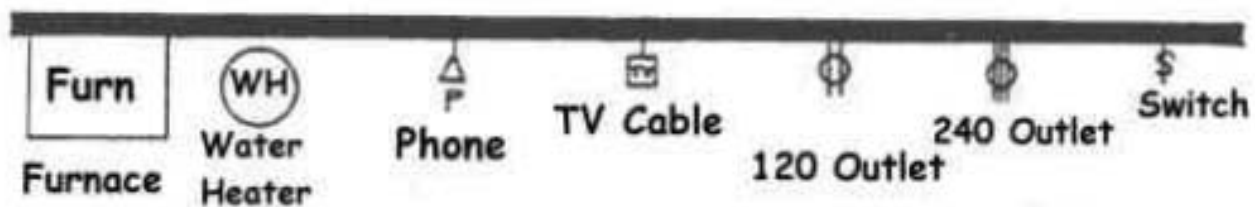
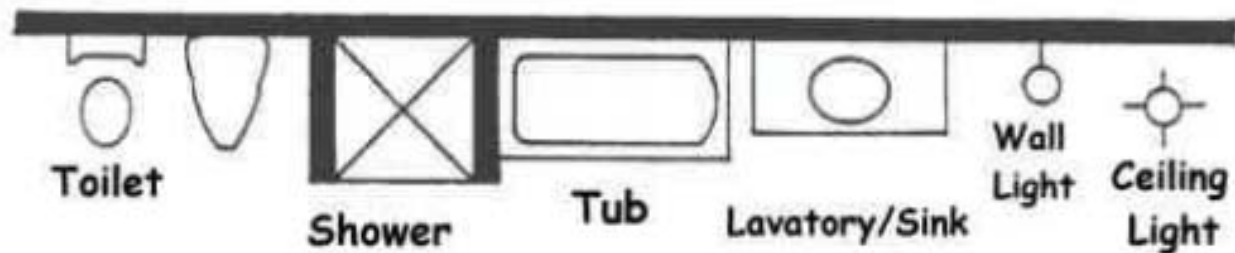
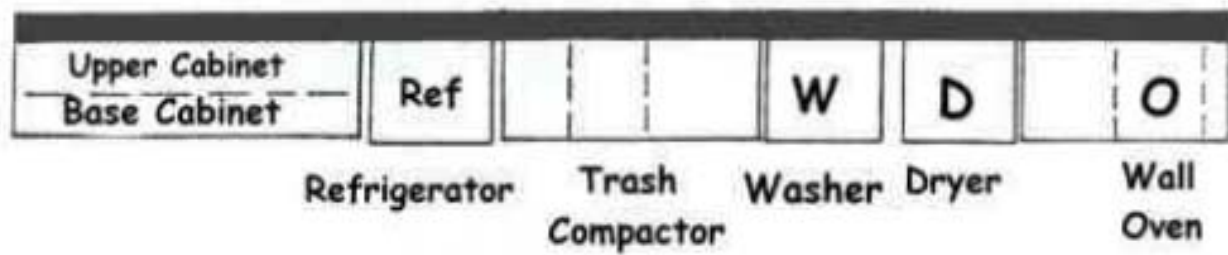
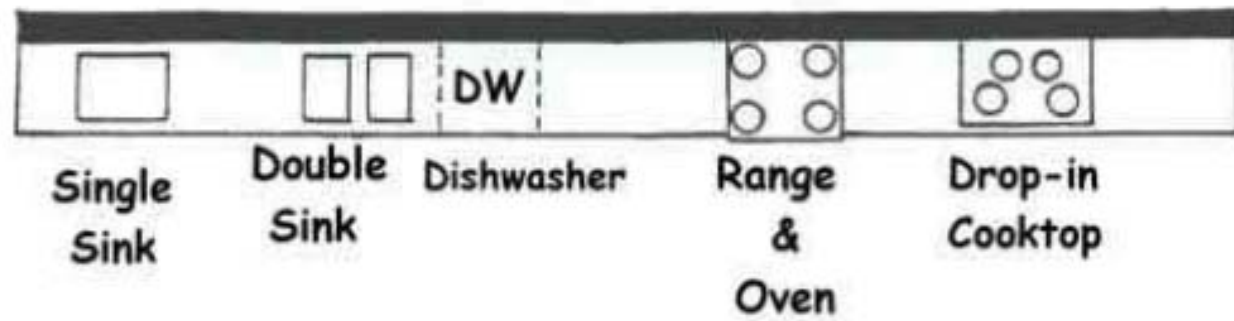


READING DRAWINGS - STANDARD CONVENTIONS

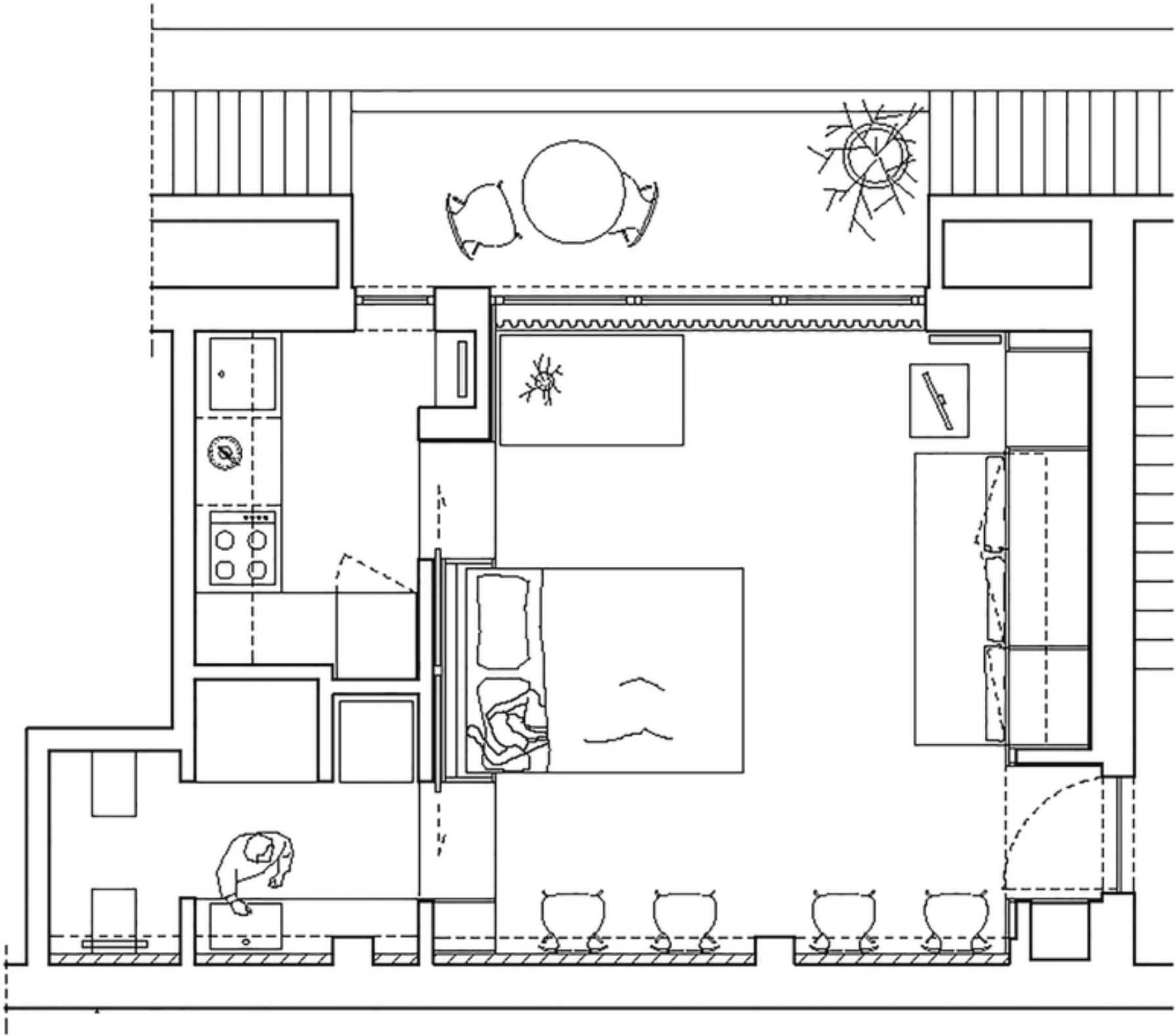


READING DRAWINGS - STANDARD CONVENTIONS

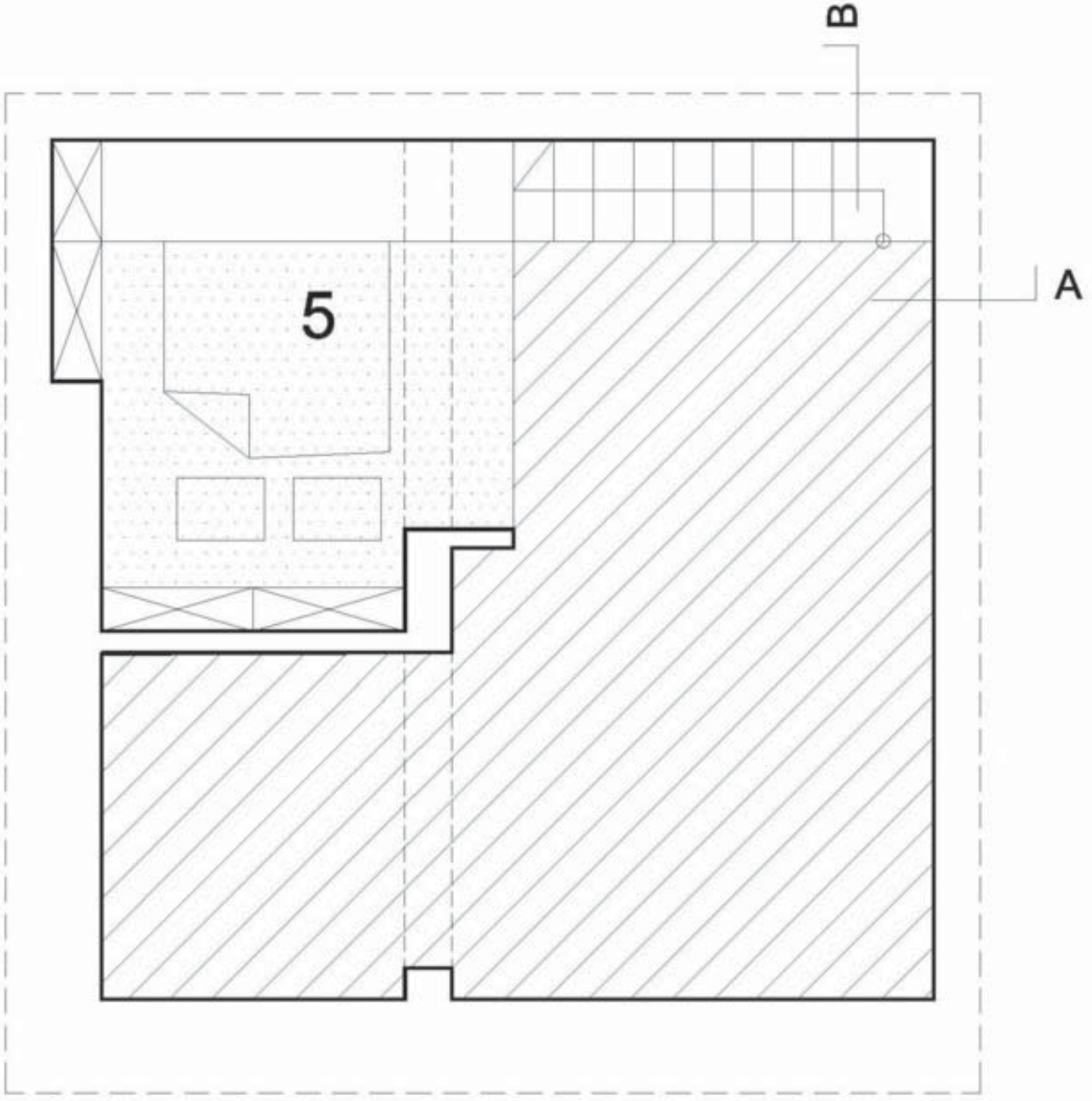
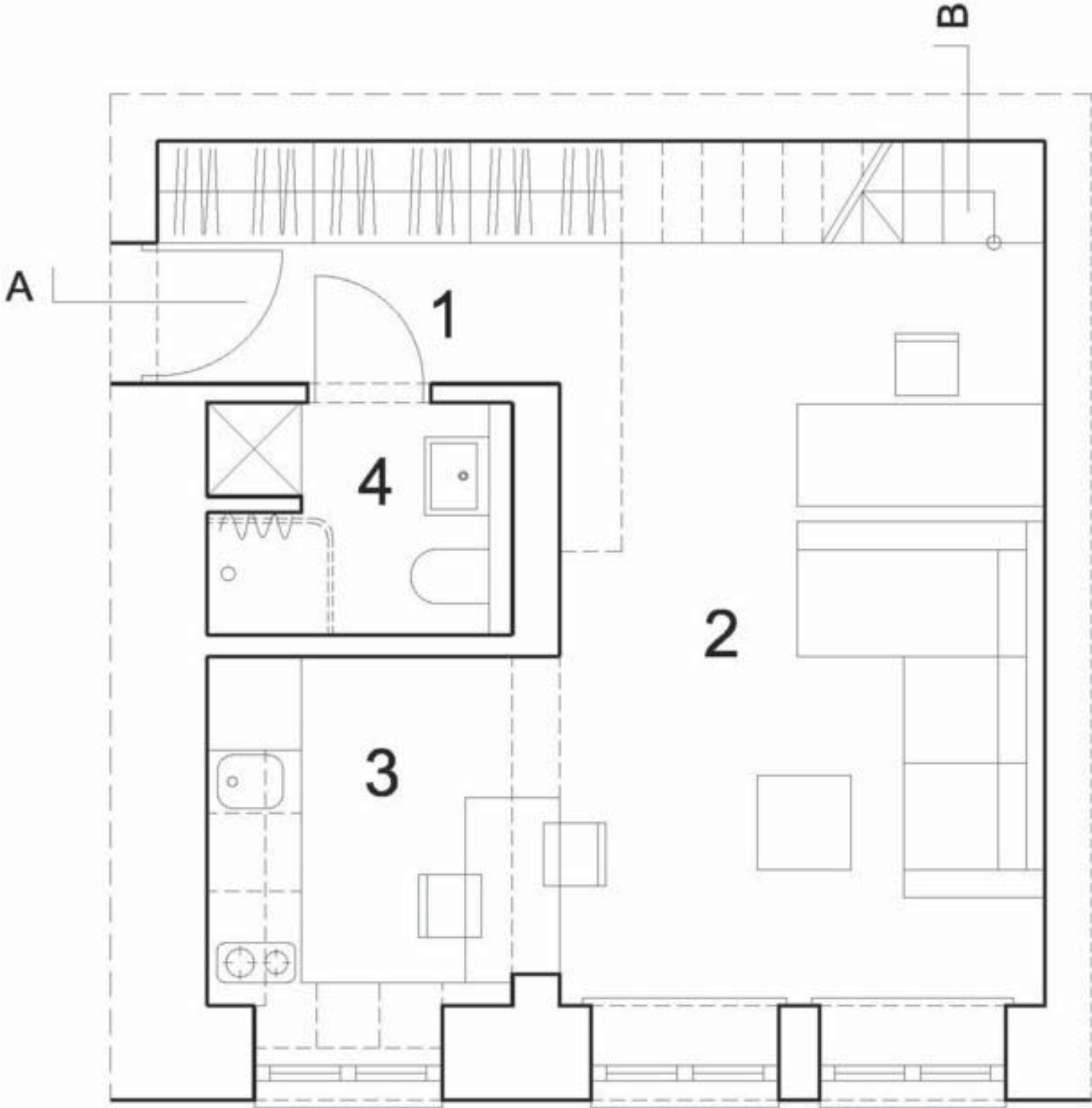
Architectural Blueprint Symbols



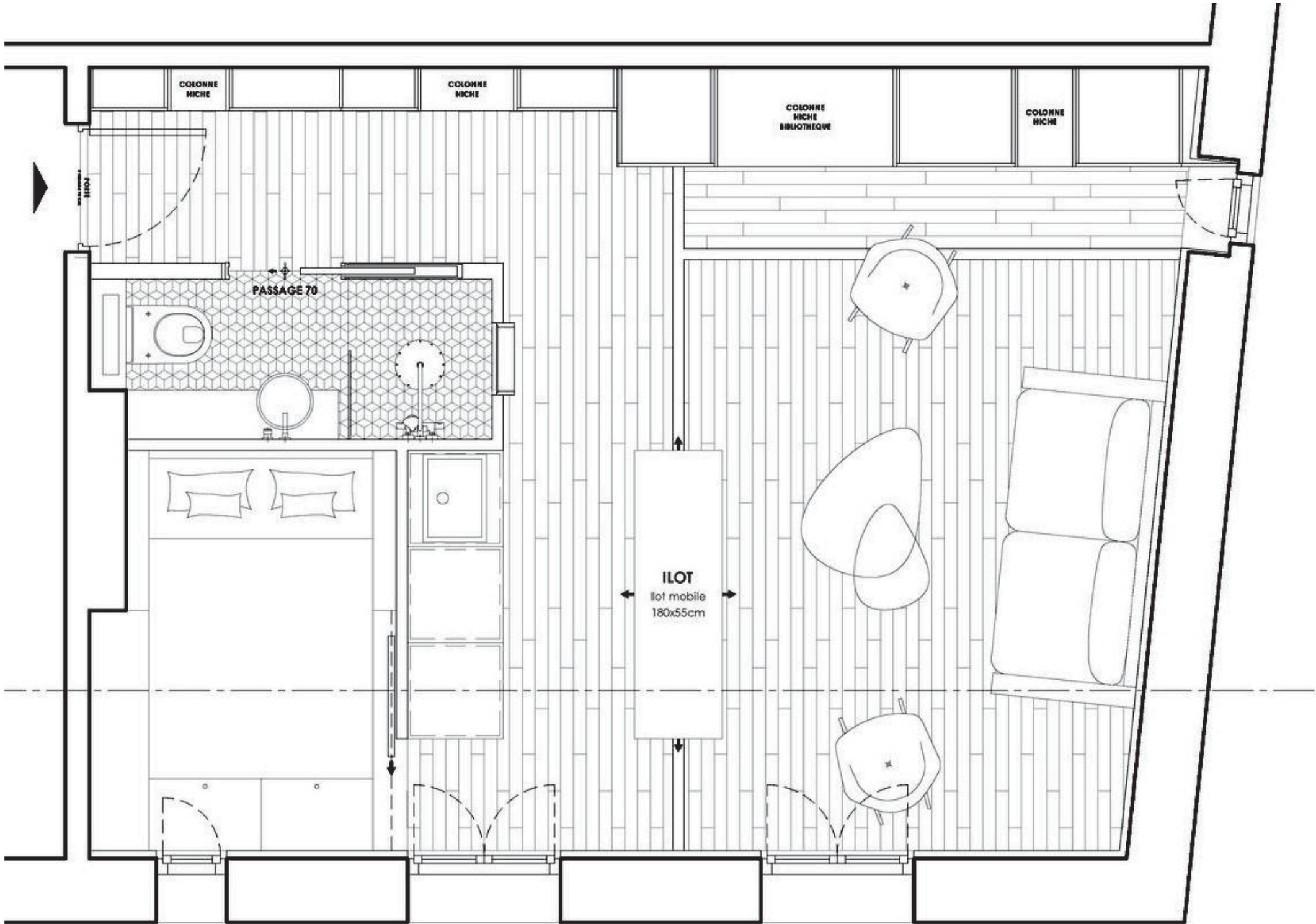
READING DRAWINGS - LINE WEIGHTS + HATCHING



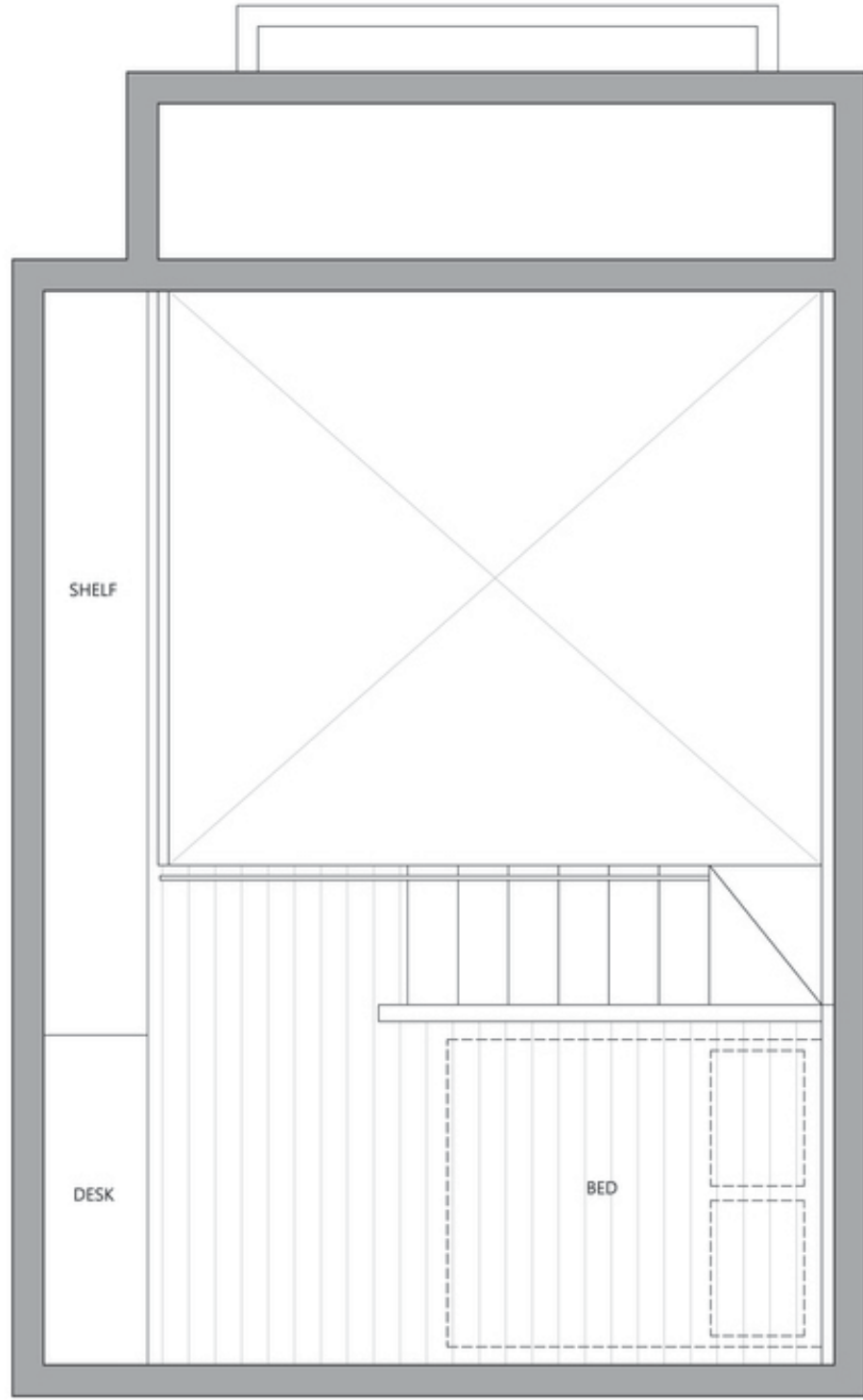
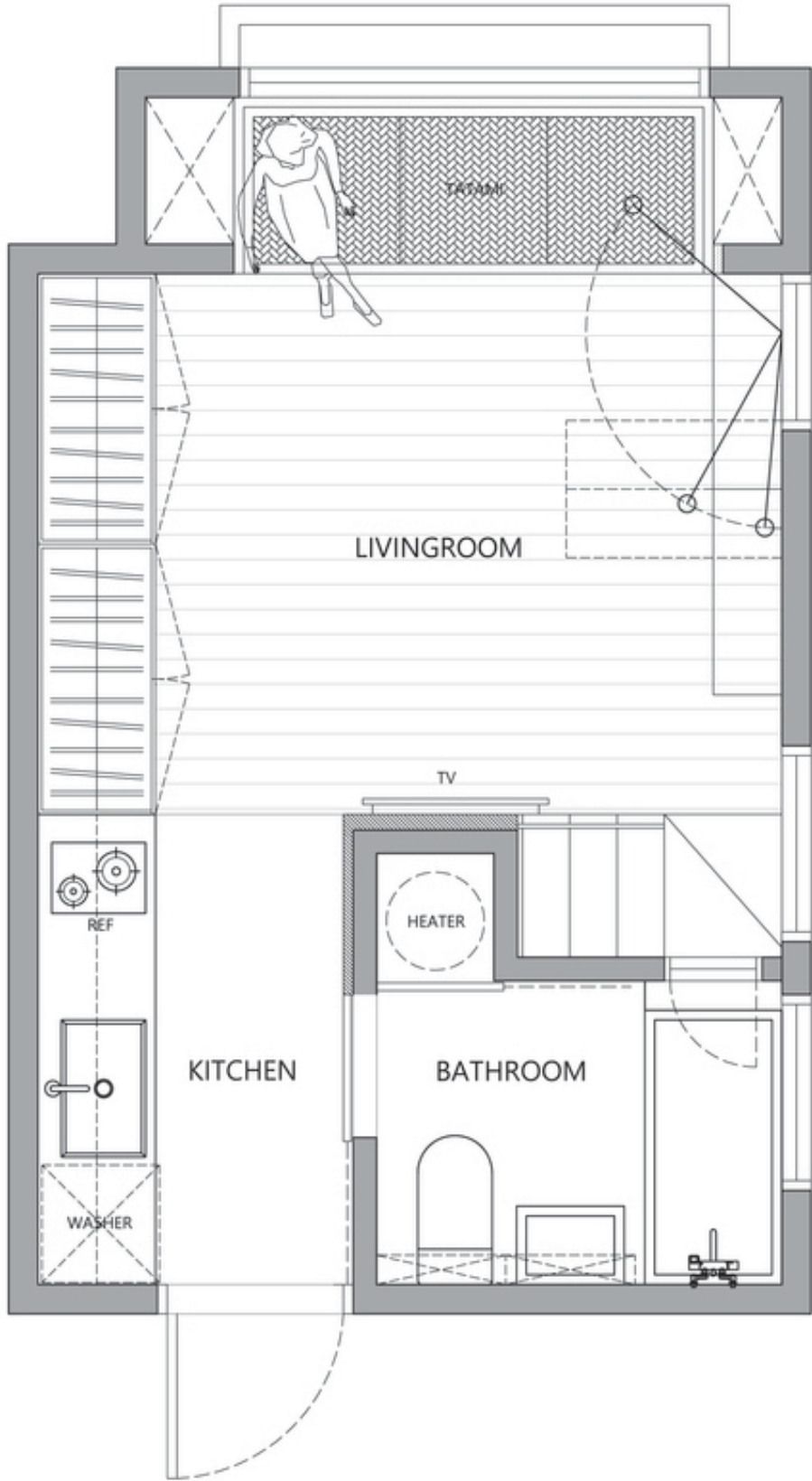
READING DRAWINGS - LINE WEIGHTS + HATCHING



READING DRAWINGS - LINE WEIGHTS + HATCHING



READING DRAWINGS - LINE WEIGHTS + HATCHING



READING DRAWINGS - LINE WEIGHTS + HATCHING

