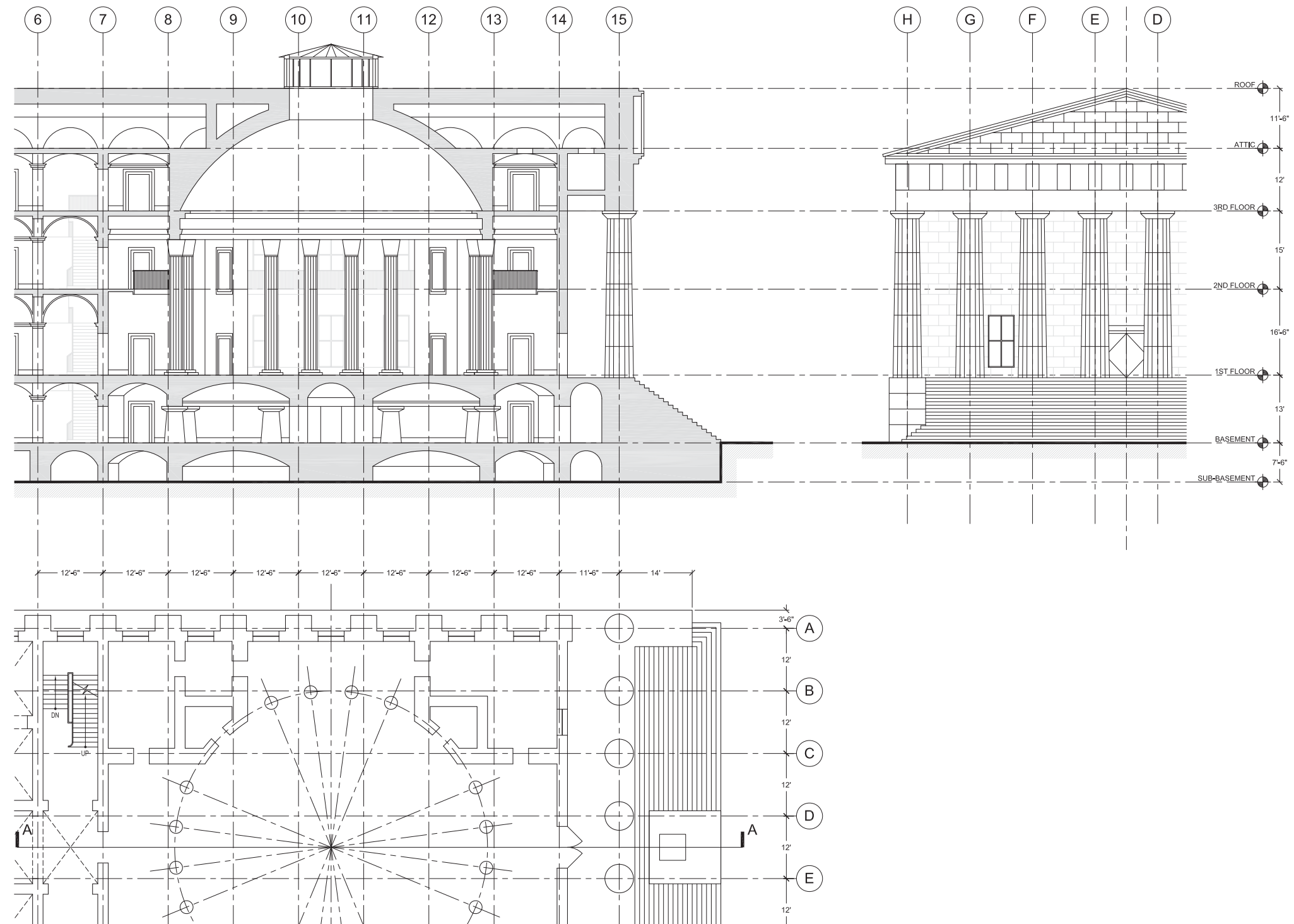
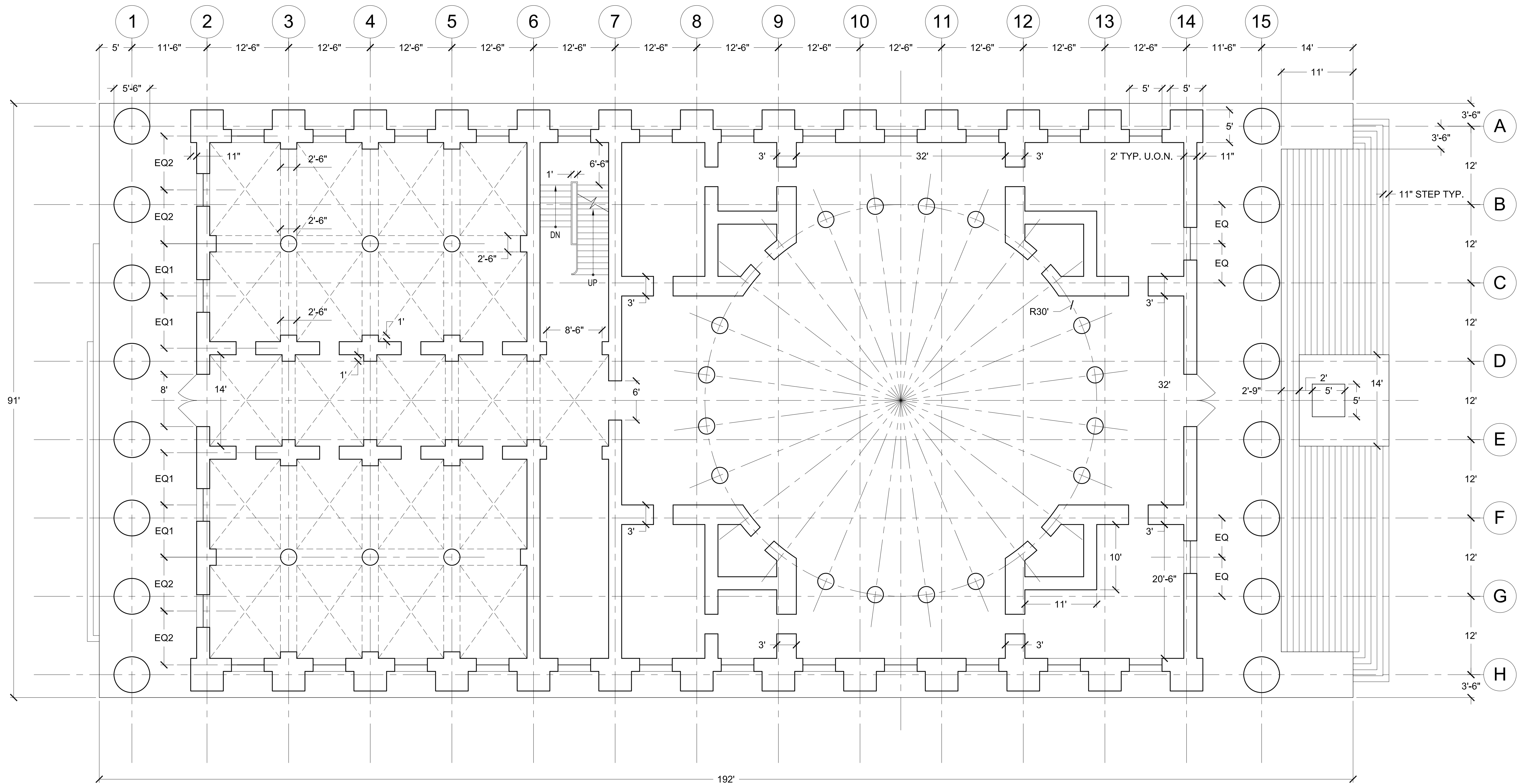


DRAWING SETUP - FEDERAL HALL

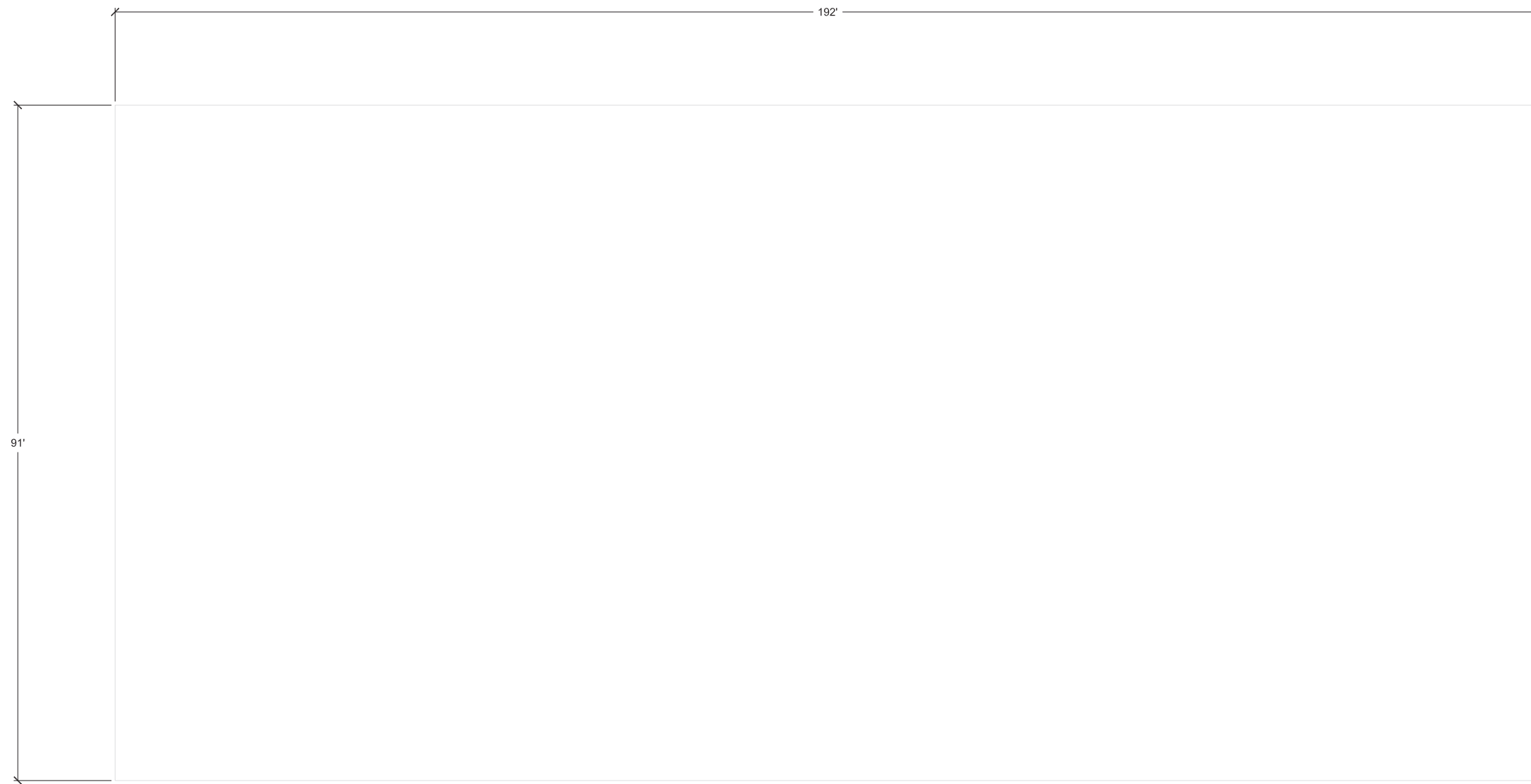




NOTES:

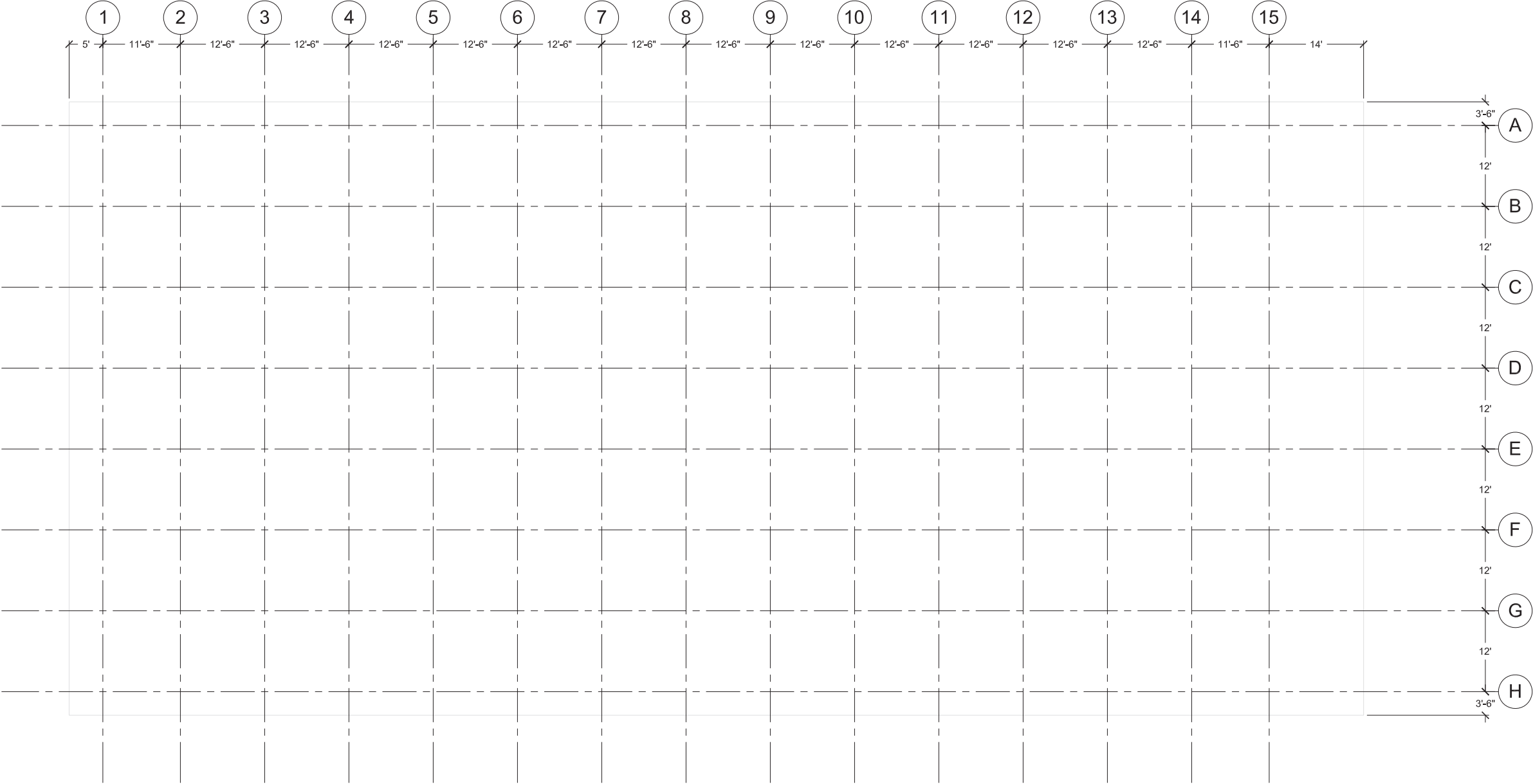
1. ALL WALLS 2'-0" THICK UNLESS OTHERWISE NOTED (U.O.N.)
2. ALL DOOR OPENINGS 3'-0" U.O.N.
3. ALL DOORS CENTERED U.O.N.
4. ALL WINDOWS 5'-0" WIDE
5. ALL STAIRS HAVE 11" TREADS, TYPICAL (TYP.)
6. EXTERIOR COLUMNS = 5'-6" DIAMETER, TYP.
7. INTERIOR COLUMNS = 2'-6" DIAMETER, TYP.
8. INTERIOR PILASTERS PROJECT 1'-0" OFF OF WALL, TYP.

PLAN SETUP



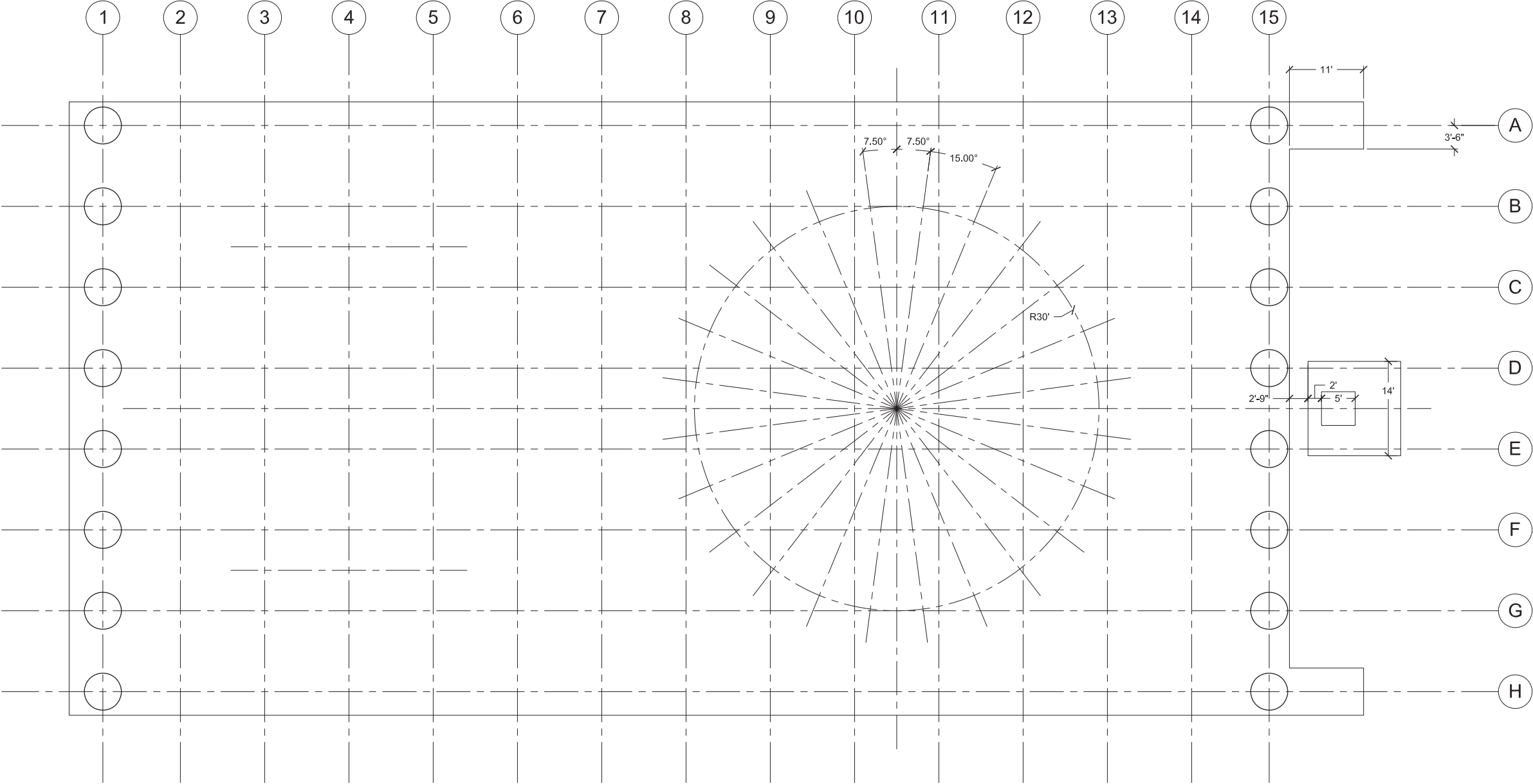
START BY LAYING OUT THE BASE USING THE DIMENSIONS GIVEN - USE LIGHT CONSTRUCTION LINES

PLAN SETUP



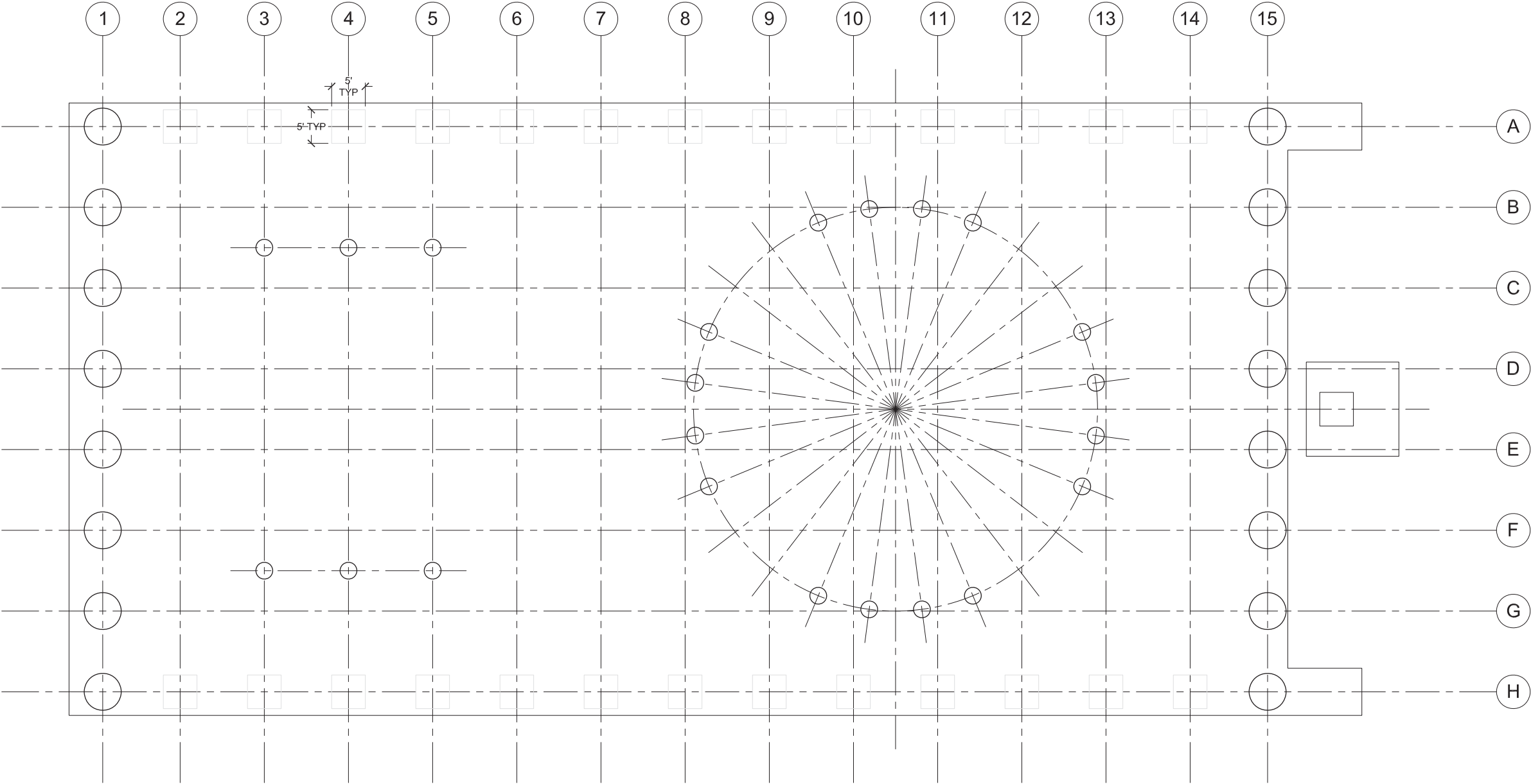
LAY OUT GRID LINES - USE THE CORNERS OF THE BASE TO ESTABLISH WHERE THE GRIDS START

PLAN SETUP



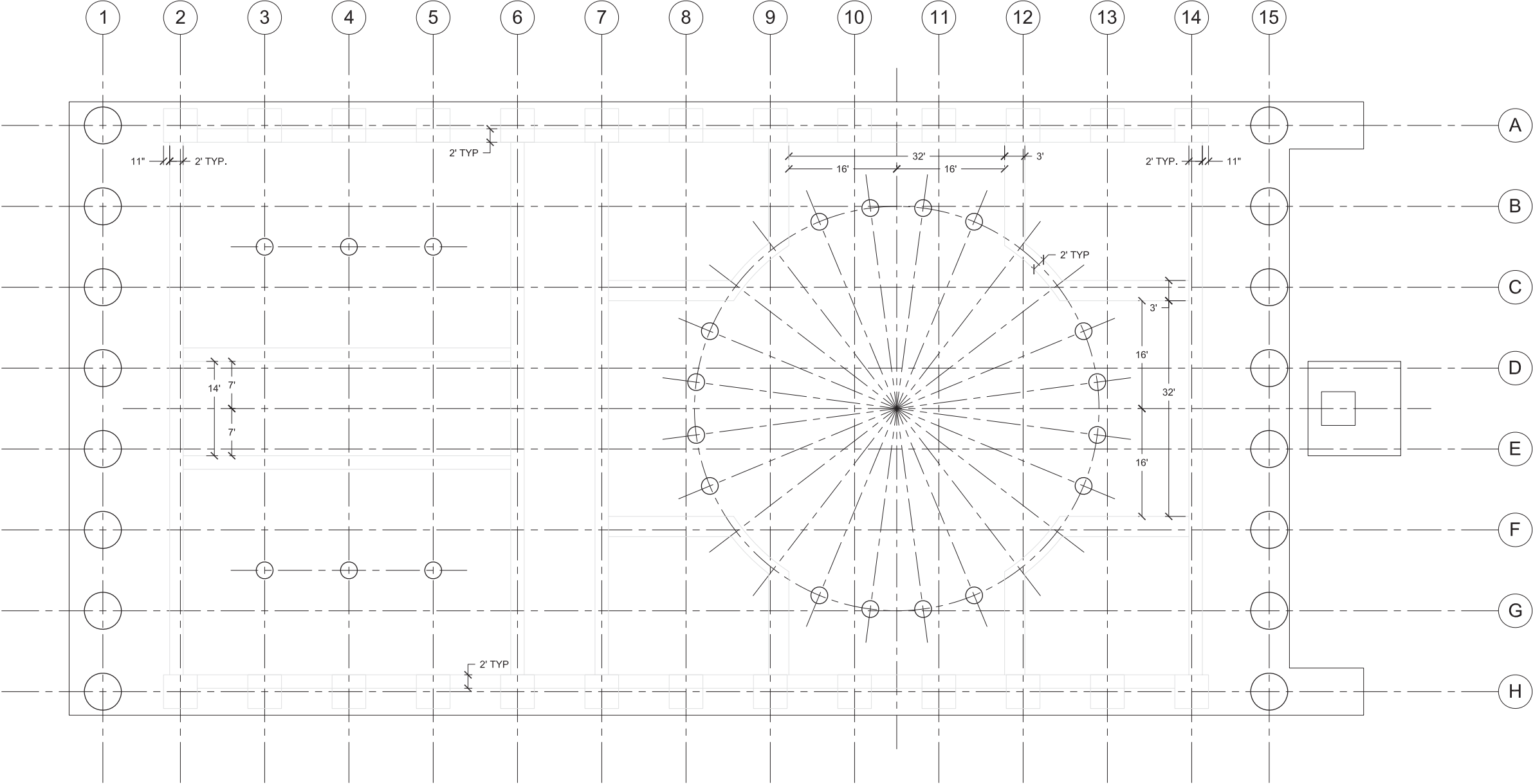
IDENTIFY KEY CENTERLINES AND LOCATE THE ROTUNDA - BEGIN LOCATING COLUMNS AT GRID INTERSECTIONS AND FINISH THE BASE

PLAN SETUP



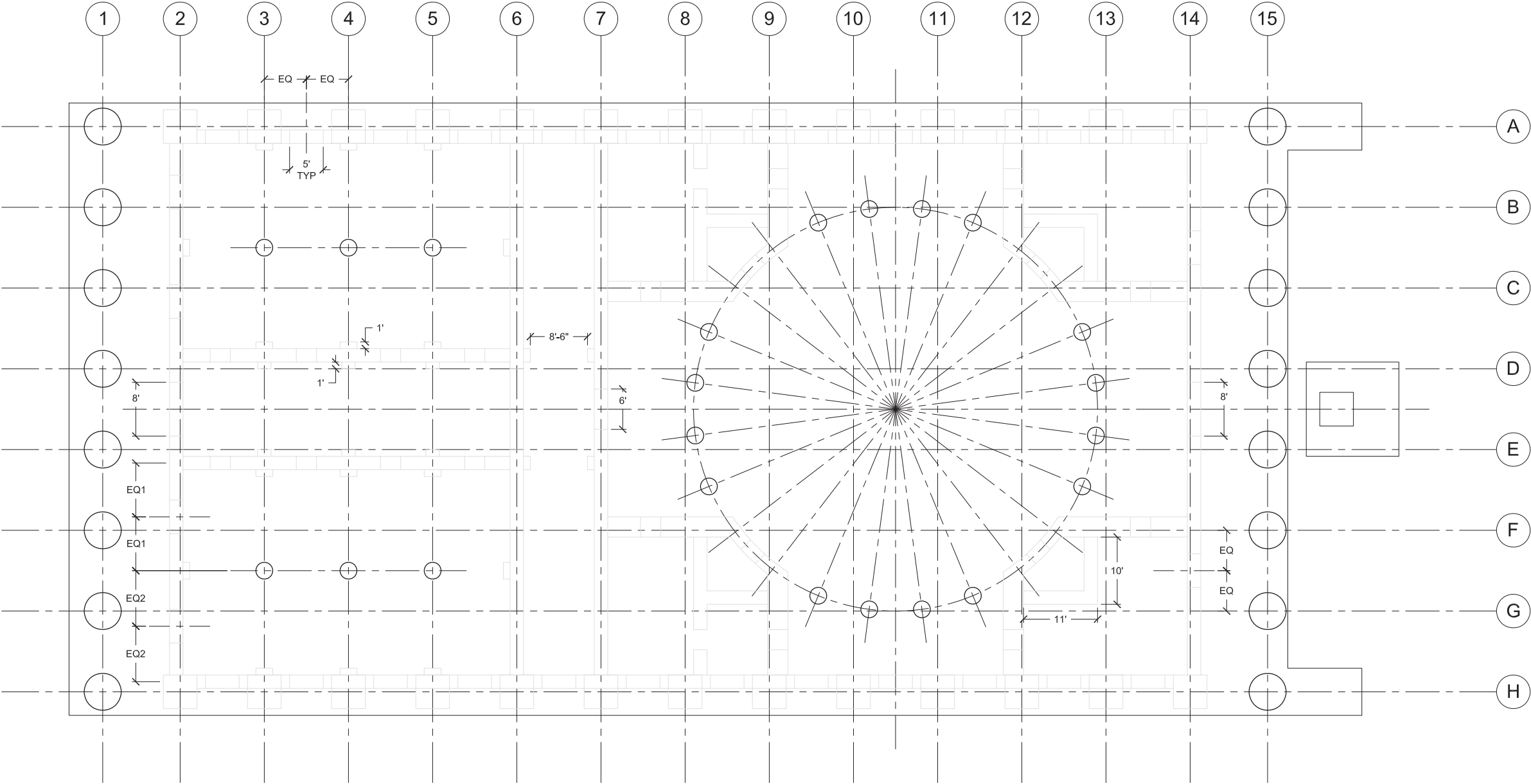
LAY OUT THE INTERIOR COLUMNS AND BEGIN SETTING UP THE 5'X5' COLUMNS AT THE EXTERIOR WALLS USING CONSTRUCTION LINES

PLAN SETUP



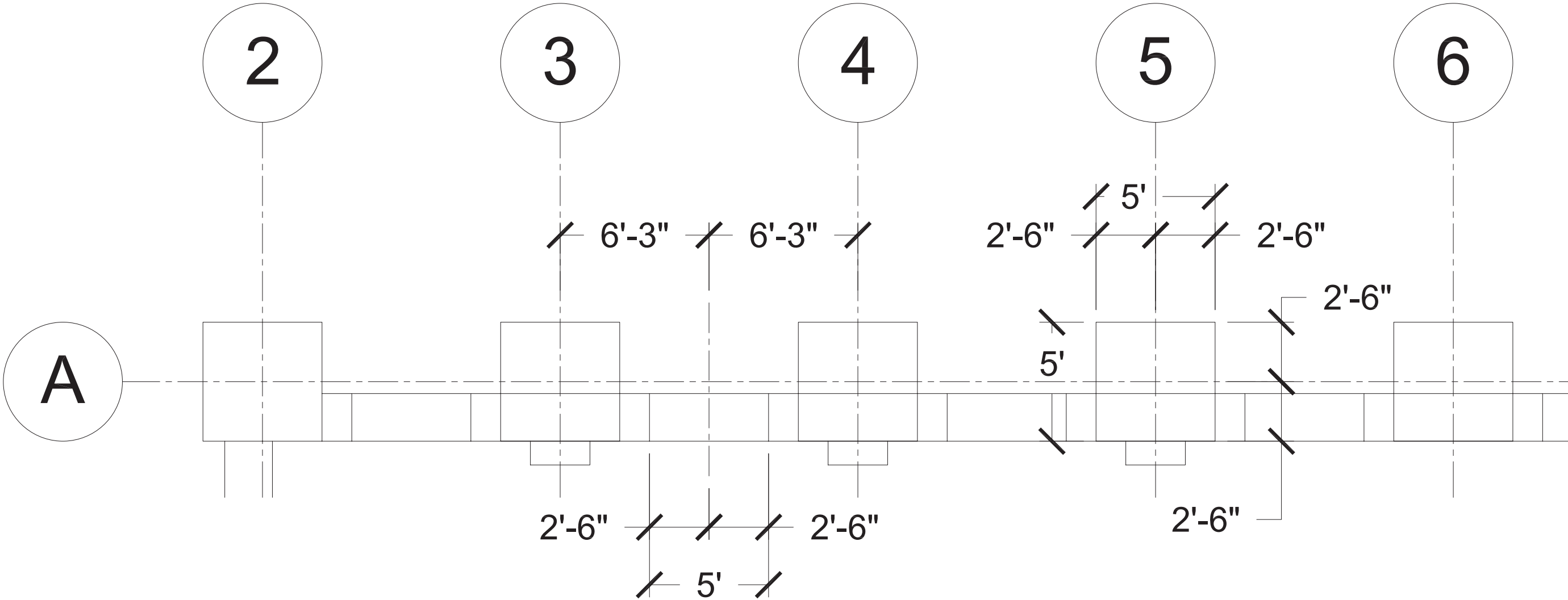
USING LIGHT CONSTRUCTION LINES, LOCATE INTERIOR AND EXTERIOR WALLS BASED ON DIMENSIONS GIVEN

PLAN SETUP



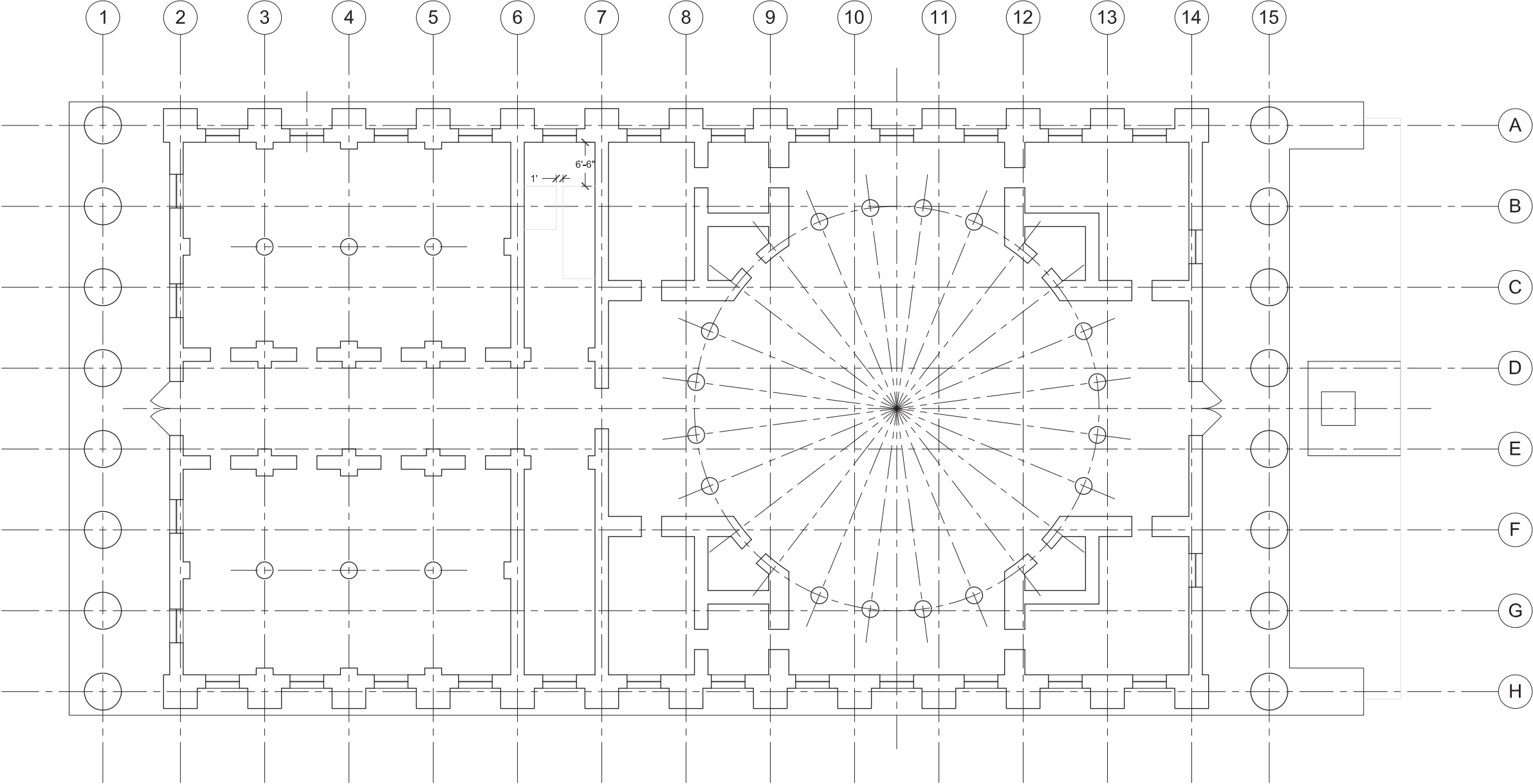
FINISH LAYING OUT INTERIOR PARTITIONS AND STRUCTURAL ELEMENTS, AND LOCATE DOOR AND WINDOW OPENINGS

PLAN SETUP



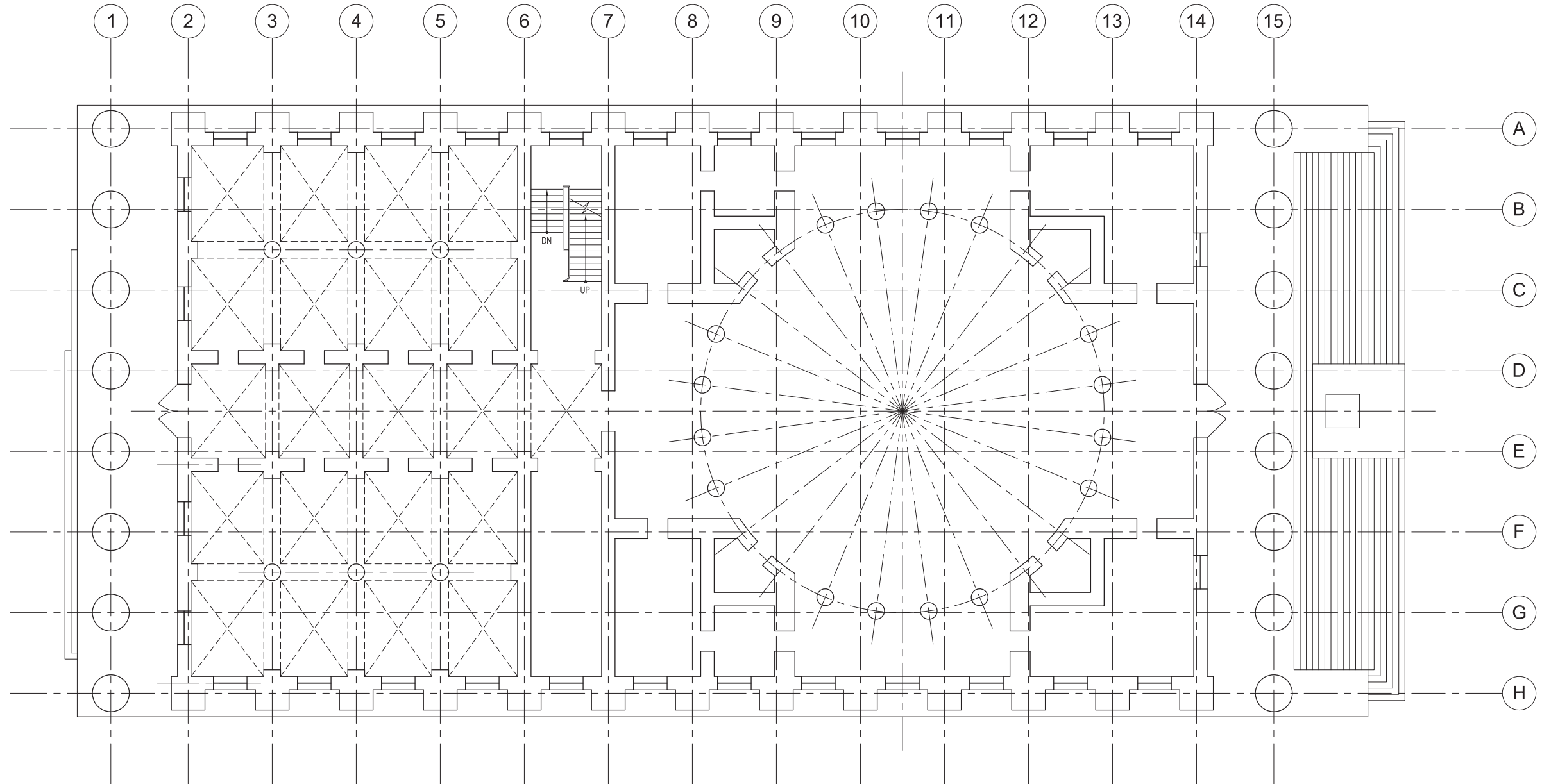
EXTERIOR WALL SETUP - USE YOUR GRIDS TO LOCATE EXTERIOR COLUMNS AND MAKE SURE TO CENTER WINDOWS

PLAN SETUP



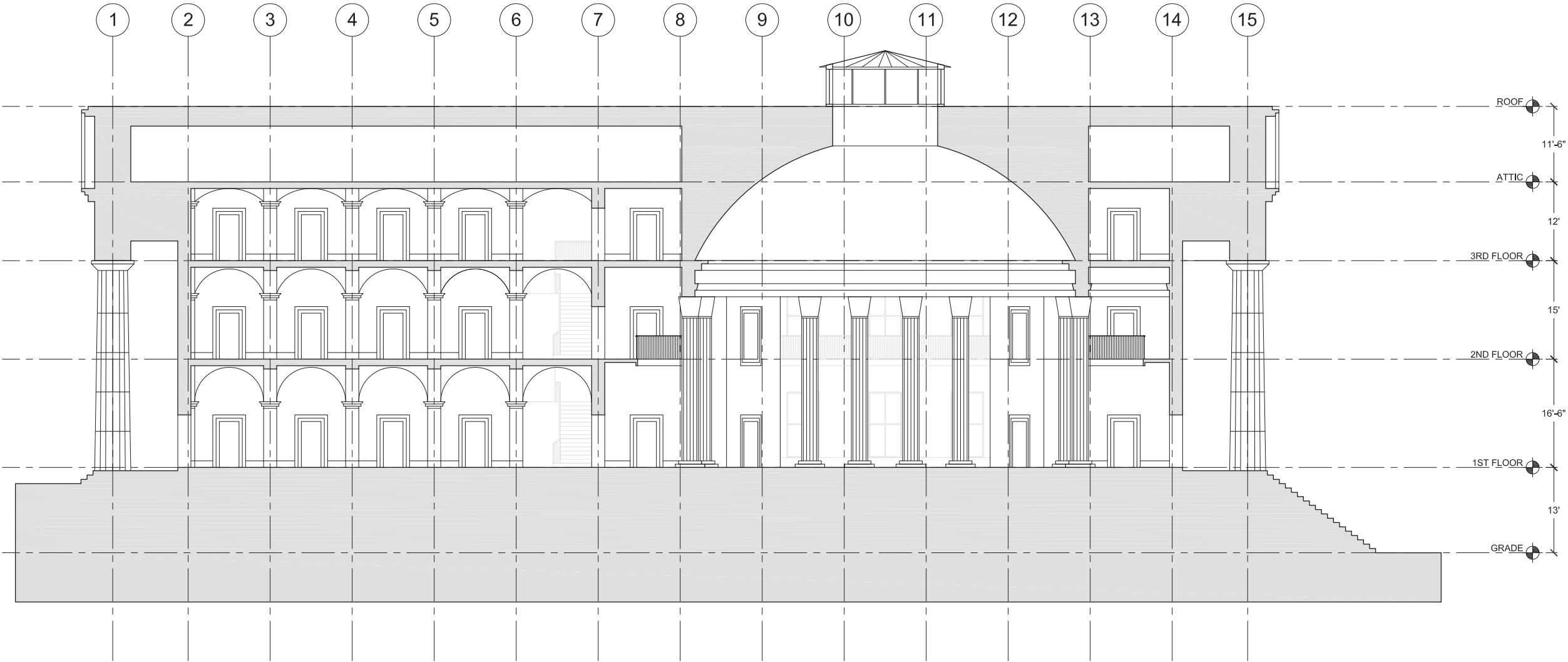
DARKEN ALL WALLS, DRAW DOORS AND WINDOWS, AND BEGIN TO BLOCK IN STAIRS

PLAN SETUP



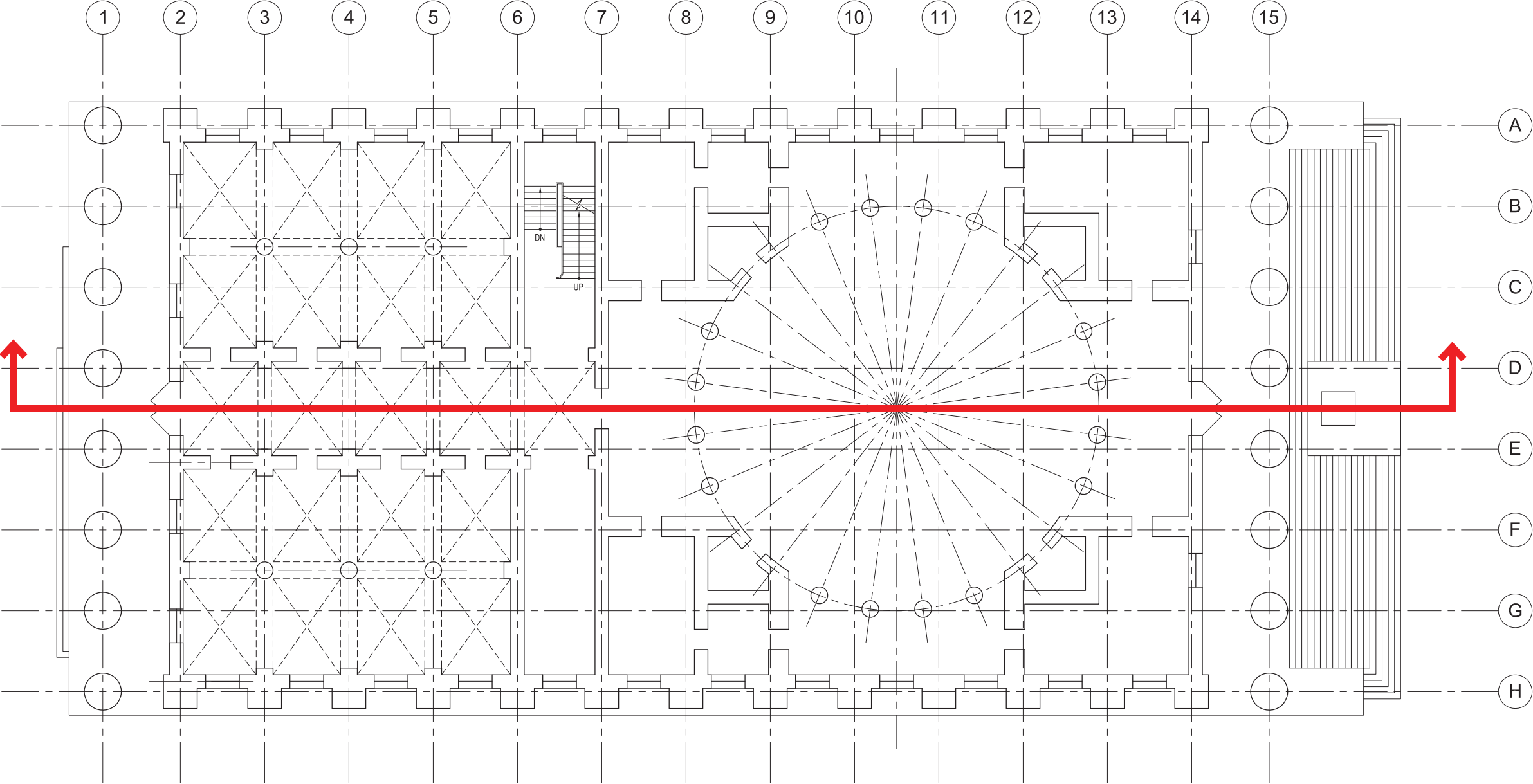
FINISH STAIRS AND LIGHTLY DASH IN CEILING VAULTING... ALL DONE!

SECTION SETUP



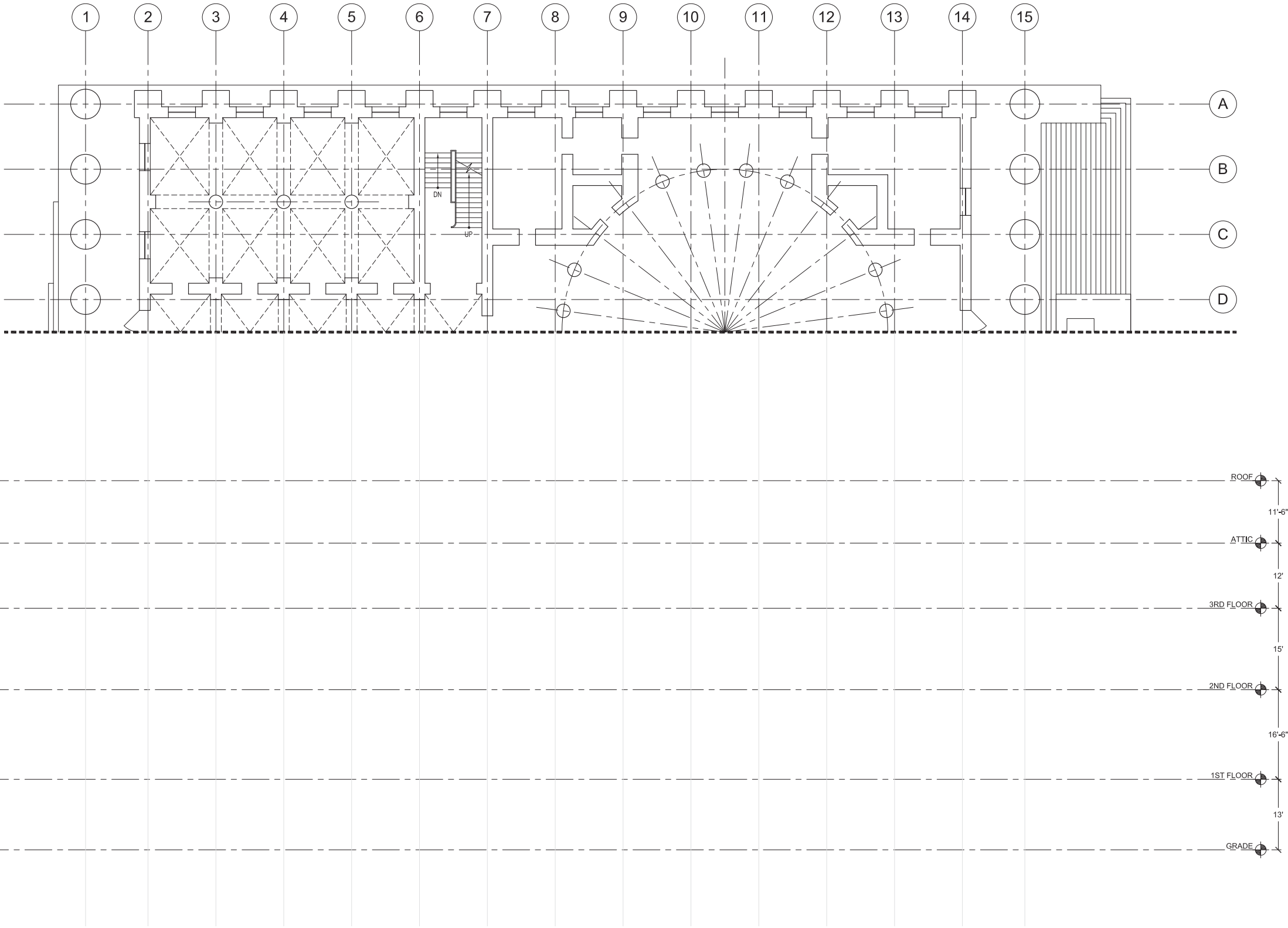
NOW LET'S FIGURE OUT HOW TO GET HERE...

SECTION SETUP



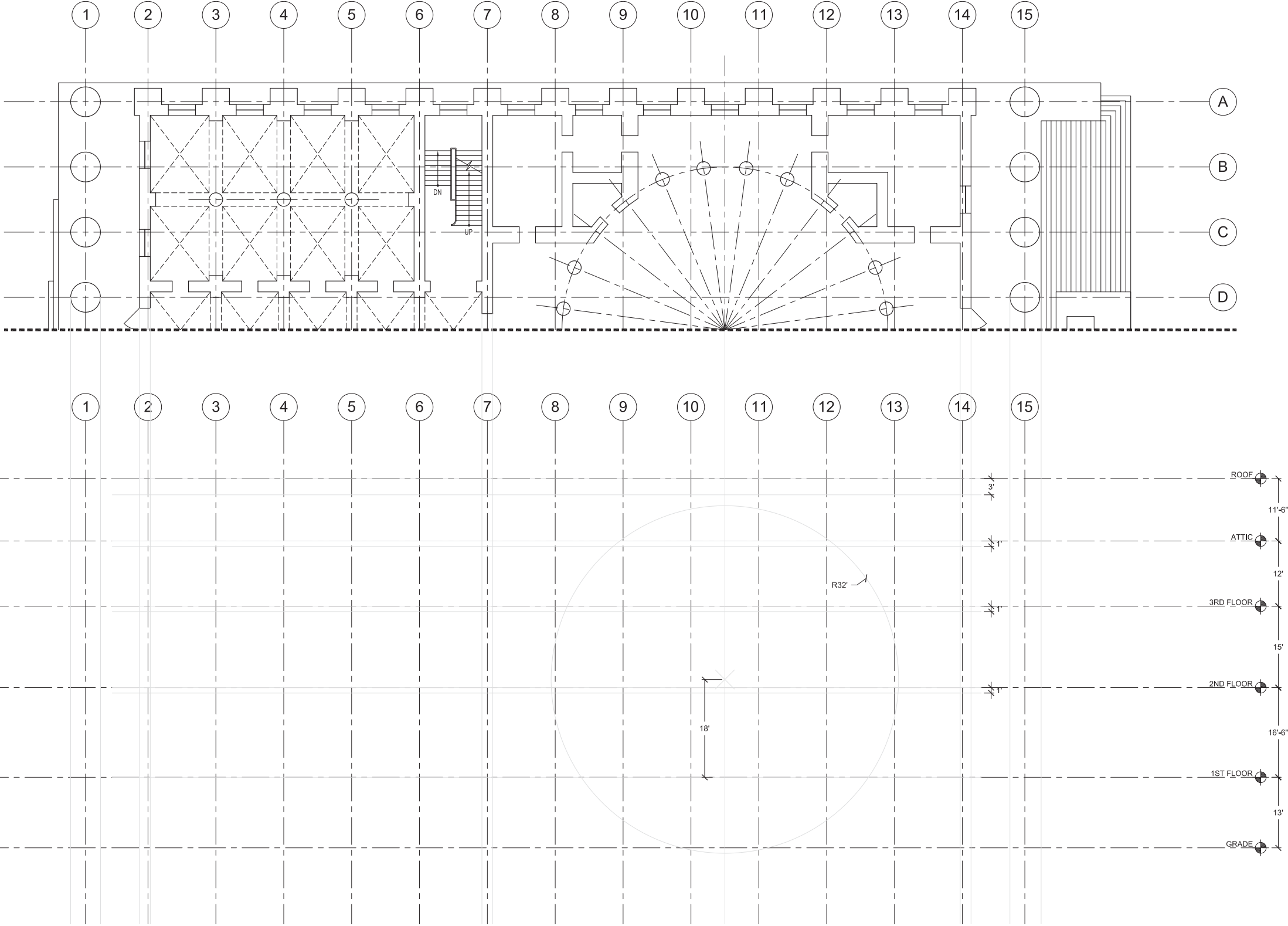
START WITH THE PLAN AND UNDERSTAND WHERE THE SECTION IS BEING CUT - RIGHT DOWN THE CENTER OF THE BUILDING

SECTION SETUP



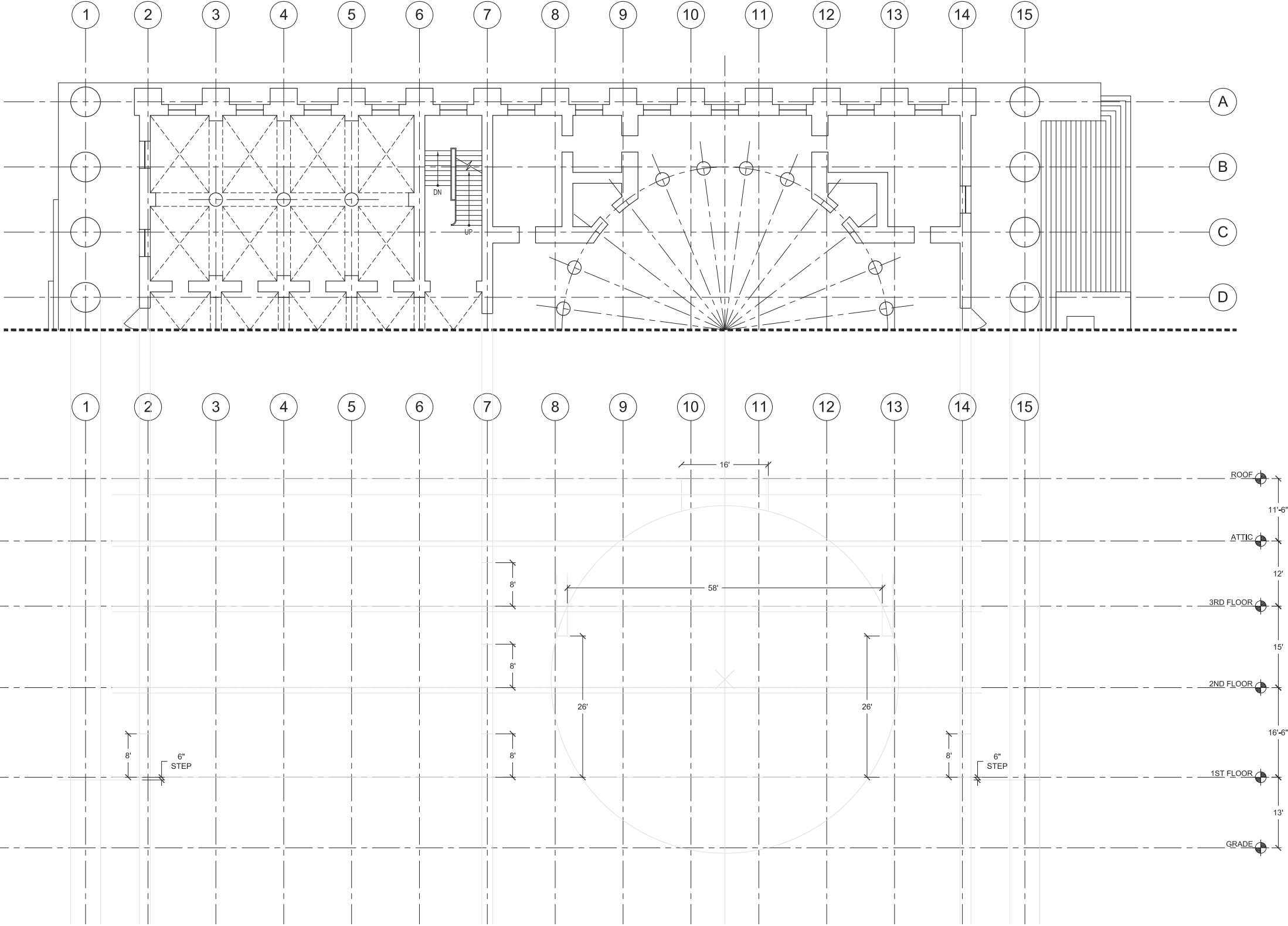
PULL GRID LINES FROM THE FLOOR PLAN AND ESTABLISH LEVELS BASED ON THE DIMENSIONS GIVEN

SECTION SETUP



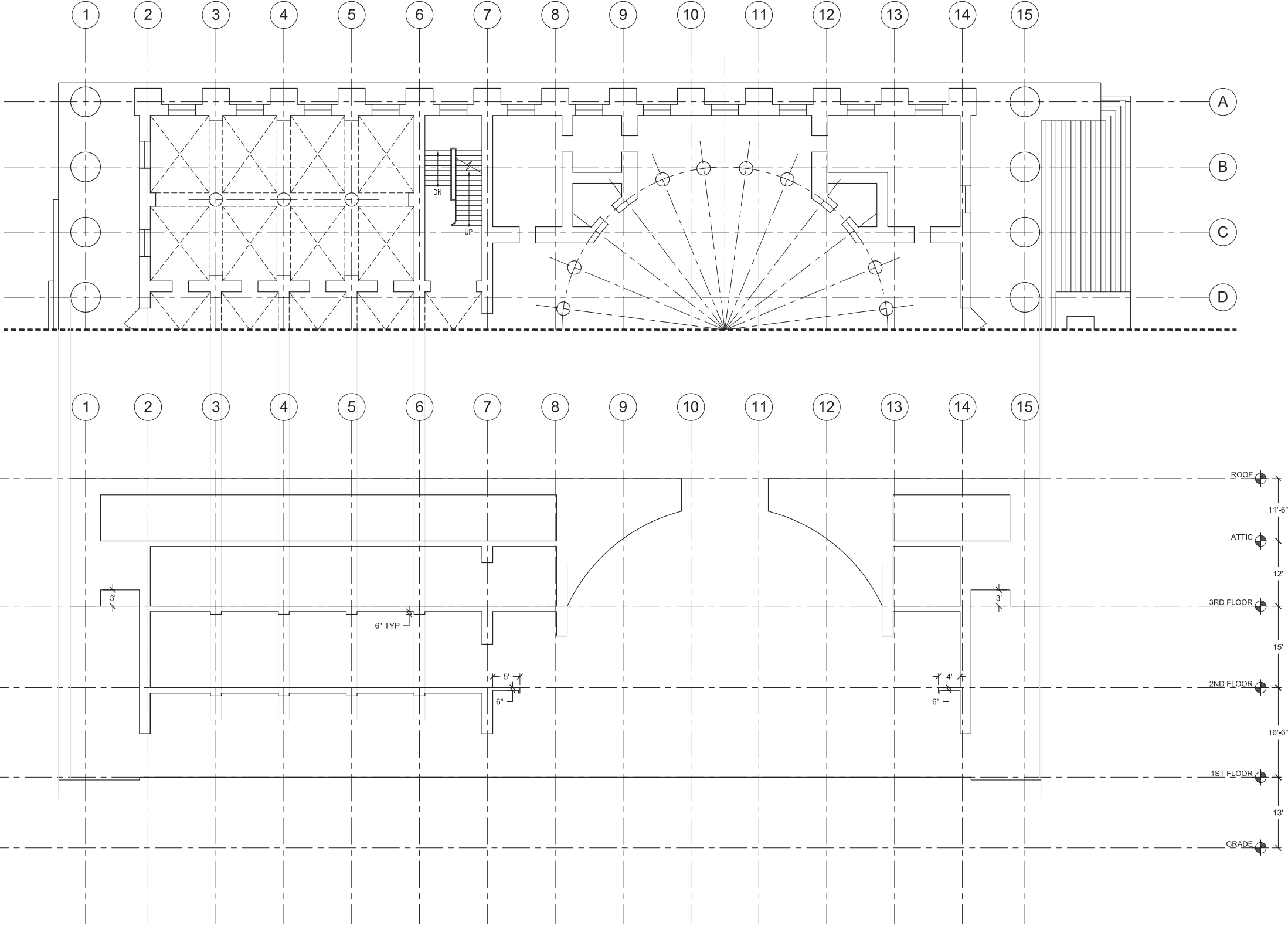
USING LIGHT CONSTRUCTION LINES, PULL DOWN WALLS AND COLUMNS, BLOCK IN FLOOR / ROOF THICKNESSES, AND LOCATE THE DOME

SECTION SETUP



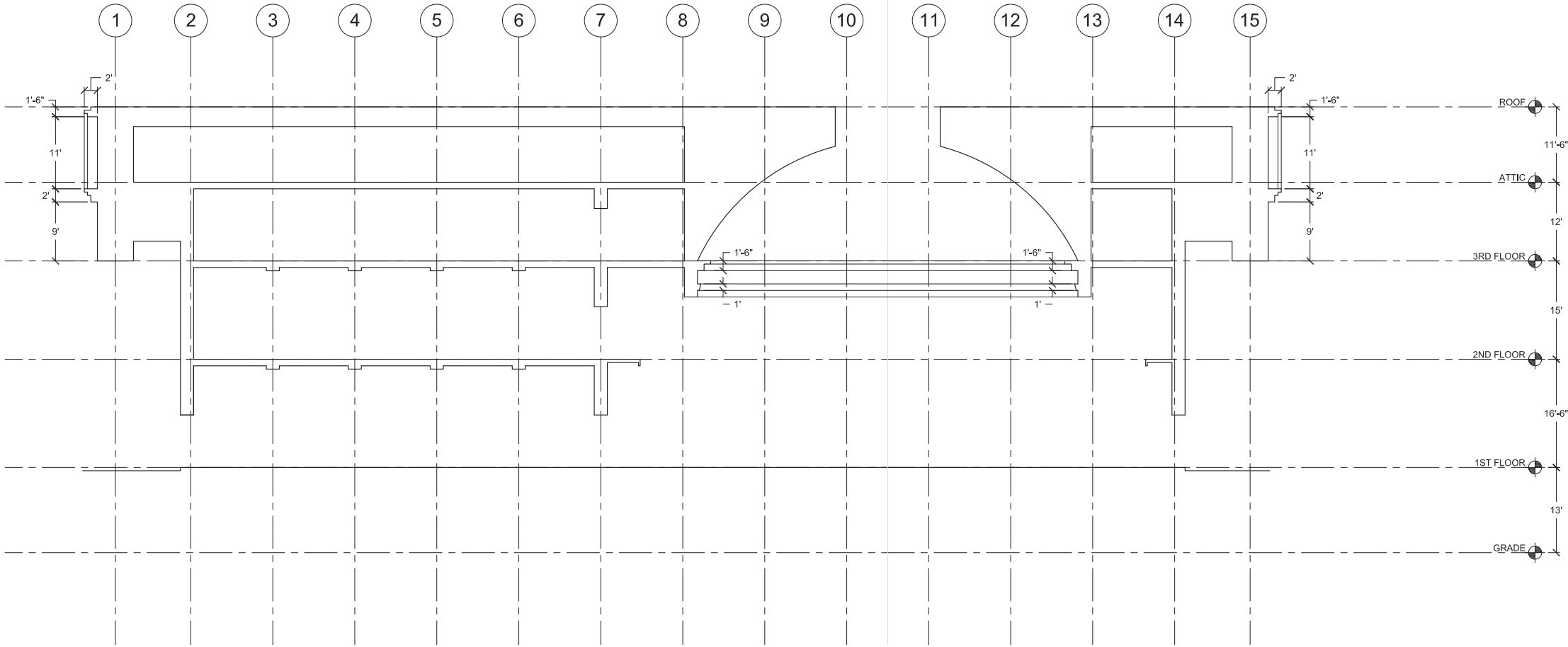
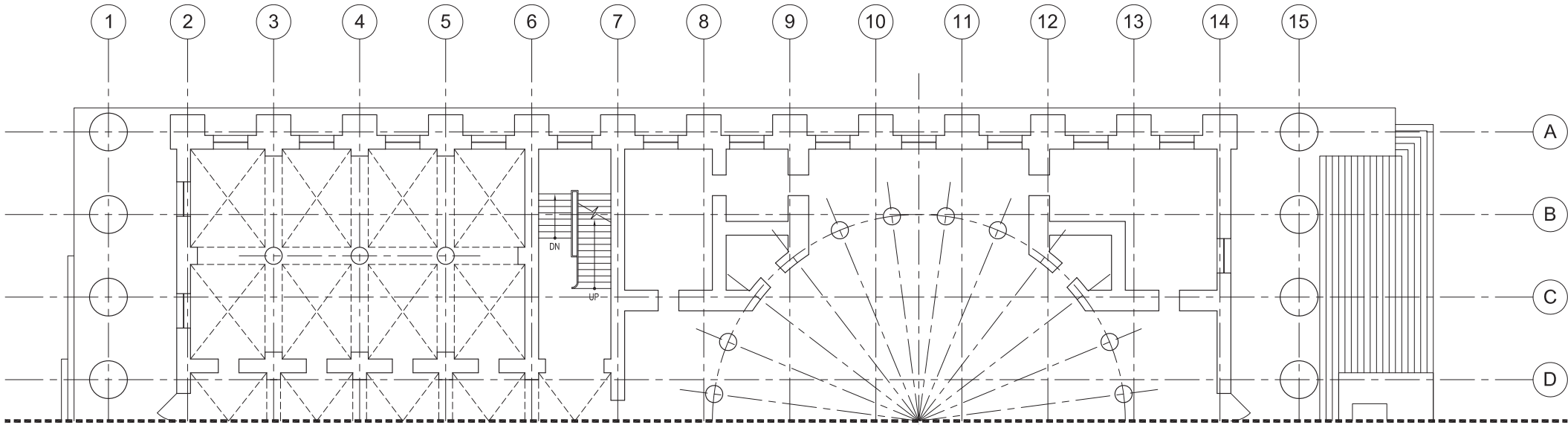
BASED ON THE DIMENSIONS GIVEN, LOCATE OPENINGS AND BEGIN DEFINING THE ROTUNDA

SECTION SETUP



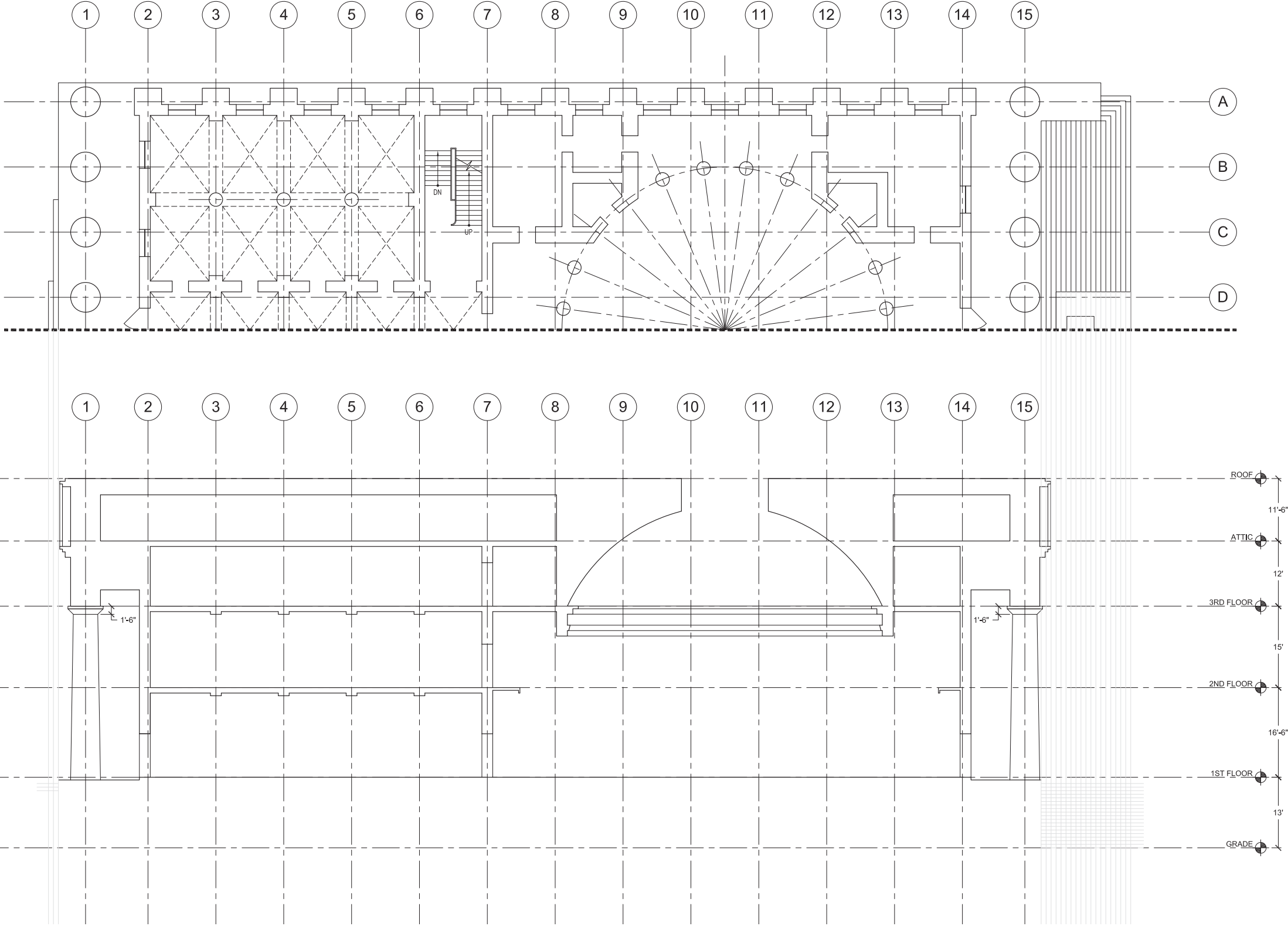
START TO DARKEN IN SECTION CUTS WHERE POSSIBLE

SECTION SETUP



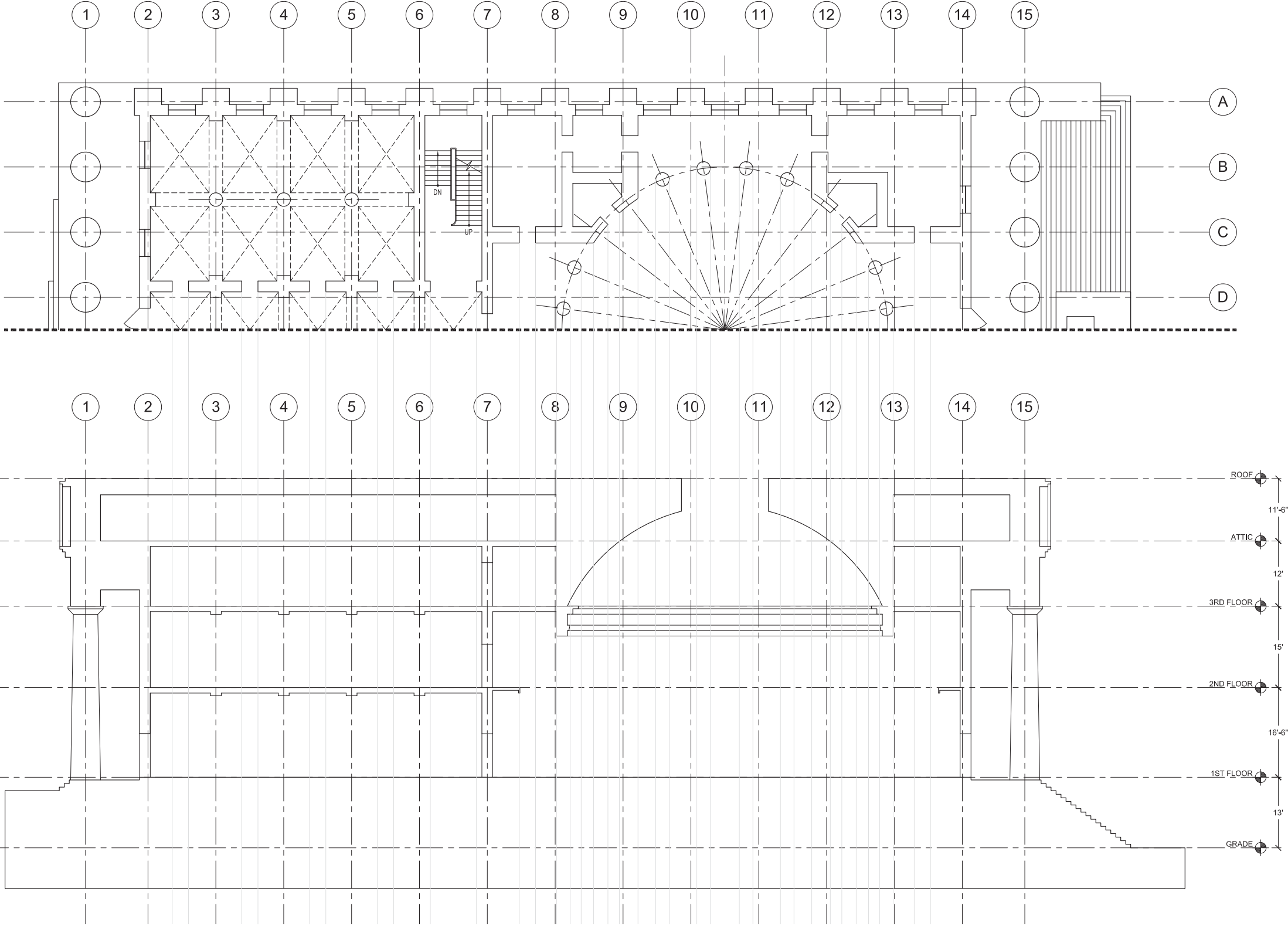
USING THE DIMENSIONS GIVEN, FINISH EXTERIOR PEDIMENT PROFILES AND INTERIOR CORNICE DETAILS

SECTION SETUP



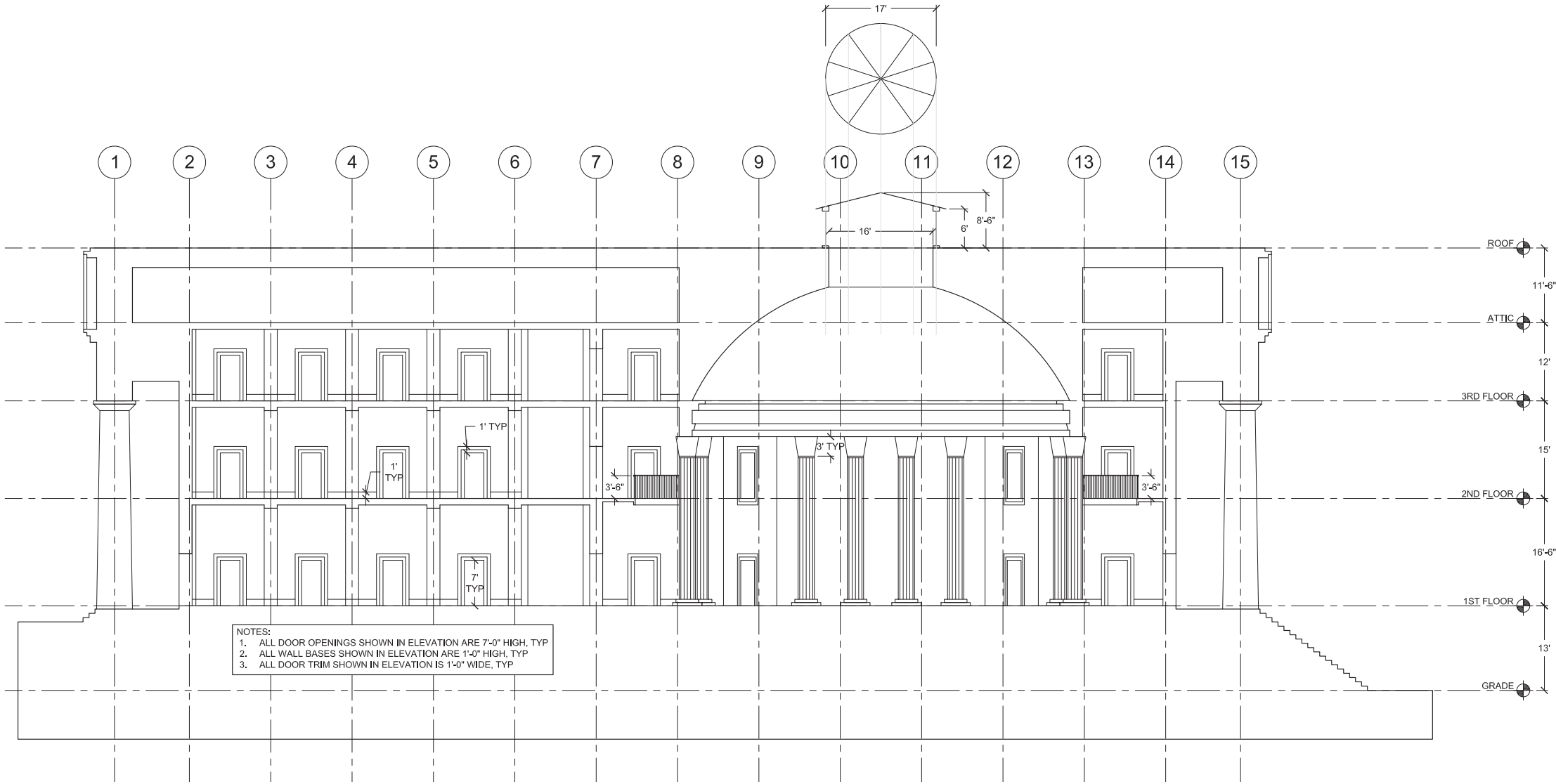
DRAW EXTERIOR COLUMNS AND START TO LAY OUT THE EXTERIOR STAIRS

SECTION SETUP



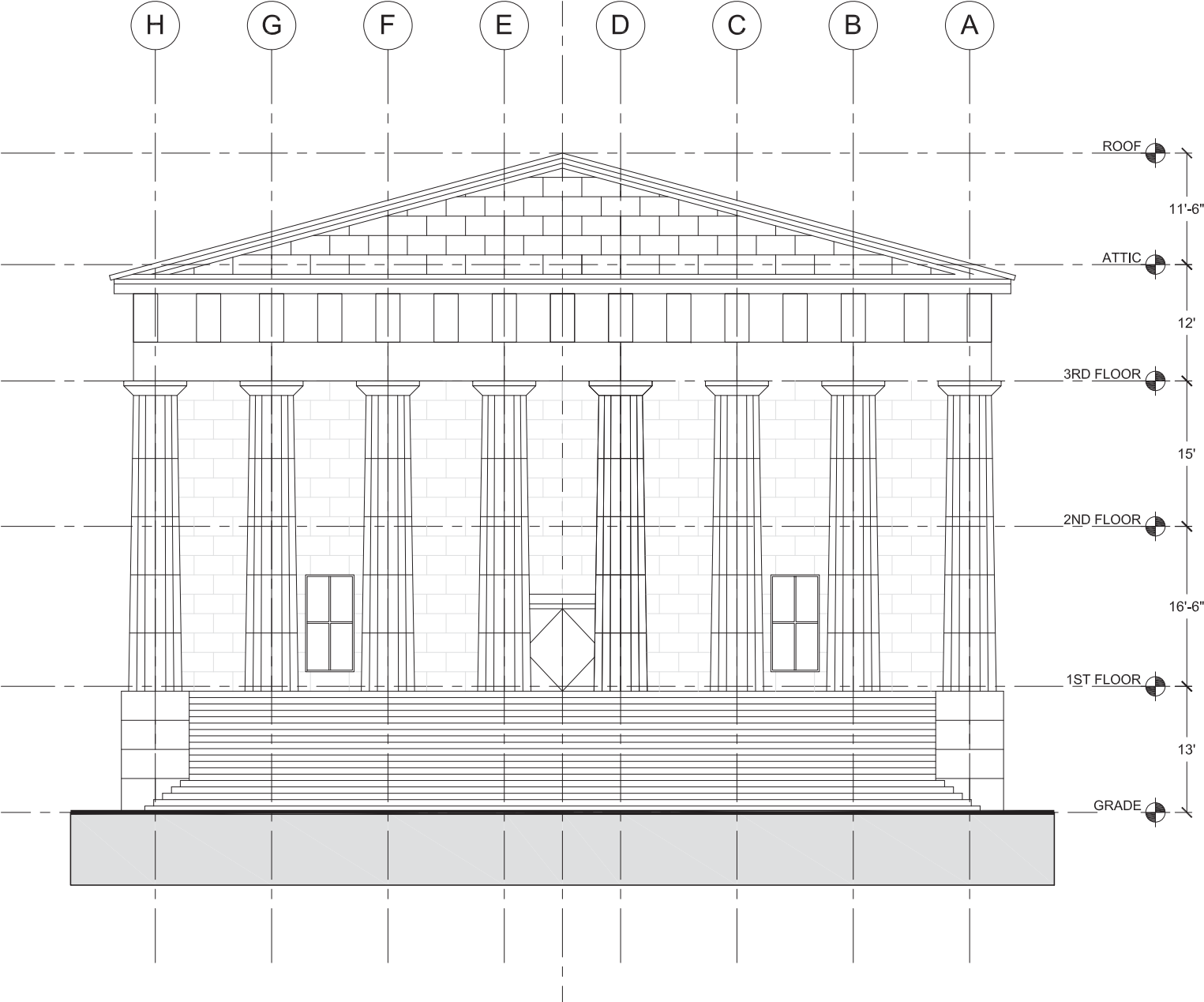
DARKEN THE REST OF THE SECTION CUT LINES, AND USING LIGHT CONSTRUCTION LINES, BEGIN PULLING DOWN INTERIOR COLUMNS AND OPENINGS

SECTION SETUP



USING THE DIMENSIONS GIVEN, FINISH DRAWING INTERIOR COMPONENTS SEEN IN ELEVATION AND LIGHT WELL ABOVE THE OCULUS

ELEVATION SETUP



NOW LET'S FIGURE OUT HOW TO GET HERE...