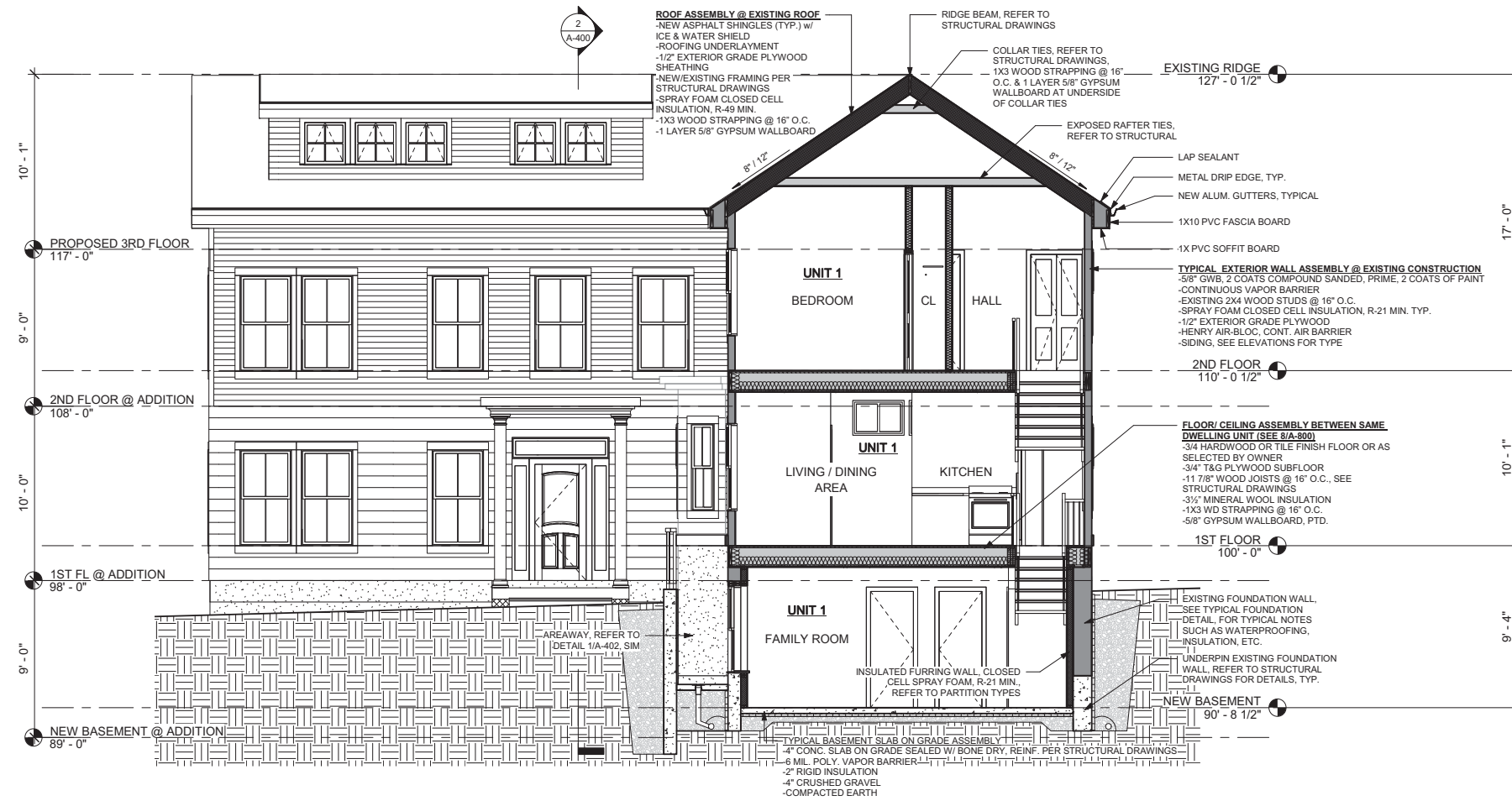
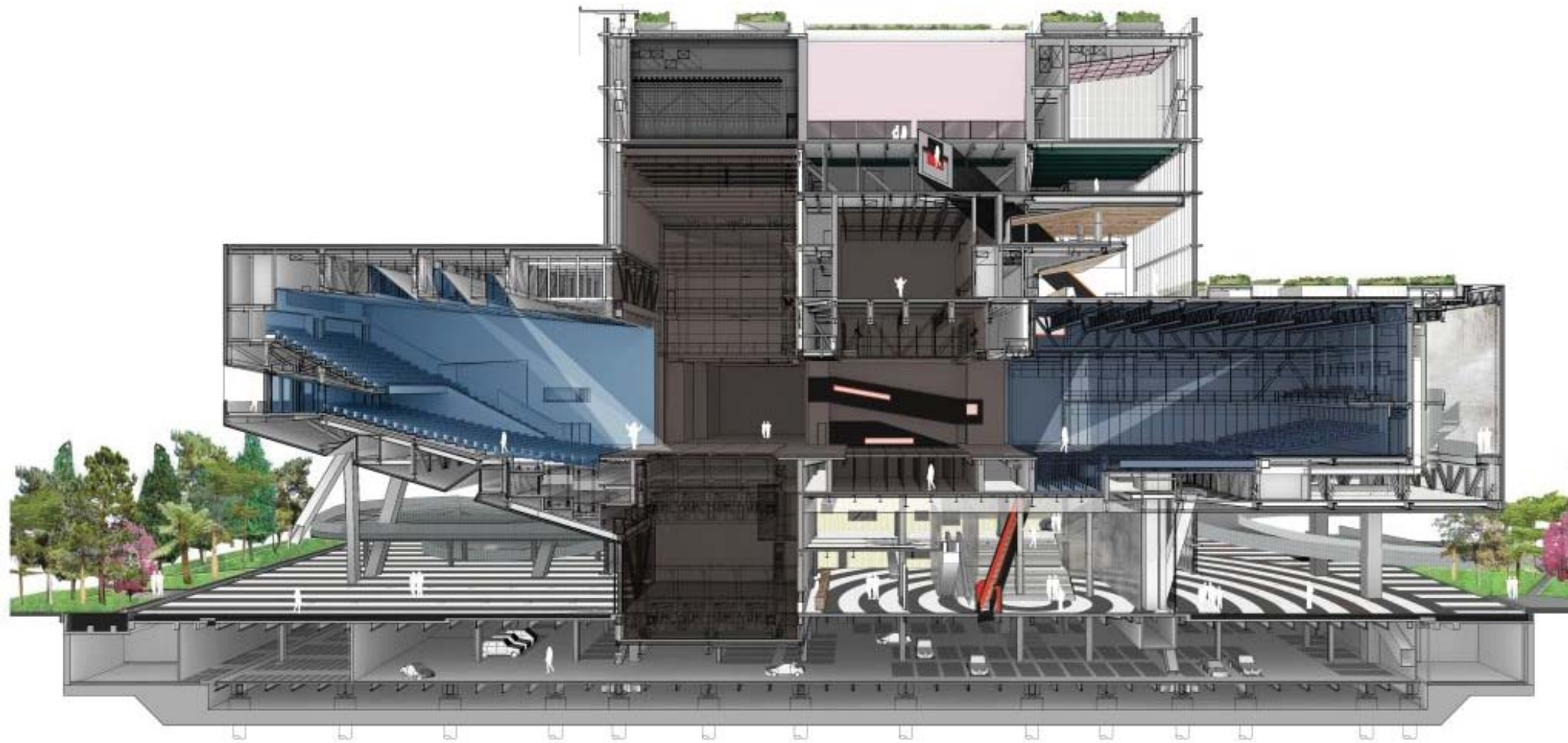


# Sections

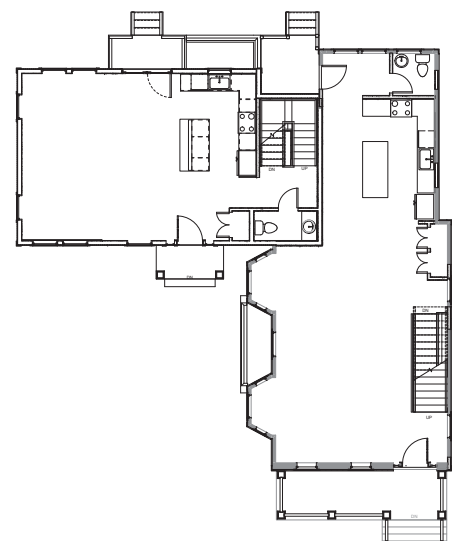


## SECTION

A drawing to scale, showing a view of a structure as though it had been sliced in half or cut along another imaginary plane. For buildings, this can be useful as it gives a view through the spaces and surrounding structures (typically across a vertical plane) that can reveal the relationships between the different parts of the buildings that might not be apparent on plan drawings. Plan drawings are in fact a type of section, but they cut through the building on a horizontal rather than vertical plane.



# SECTION EXAMPLE

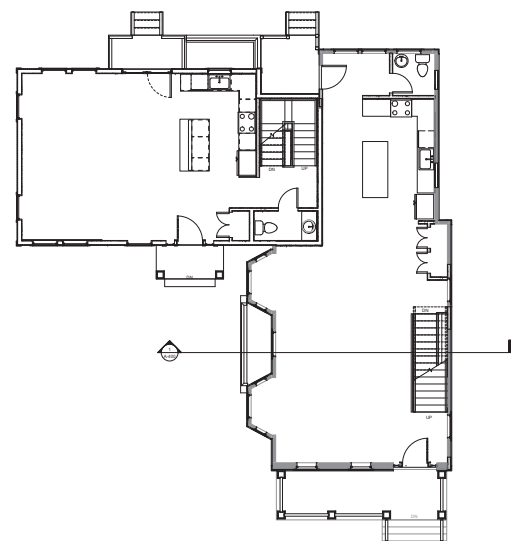


**KEY PLAN**

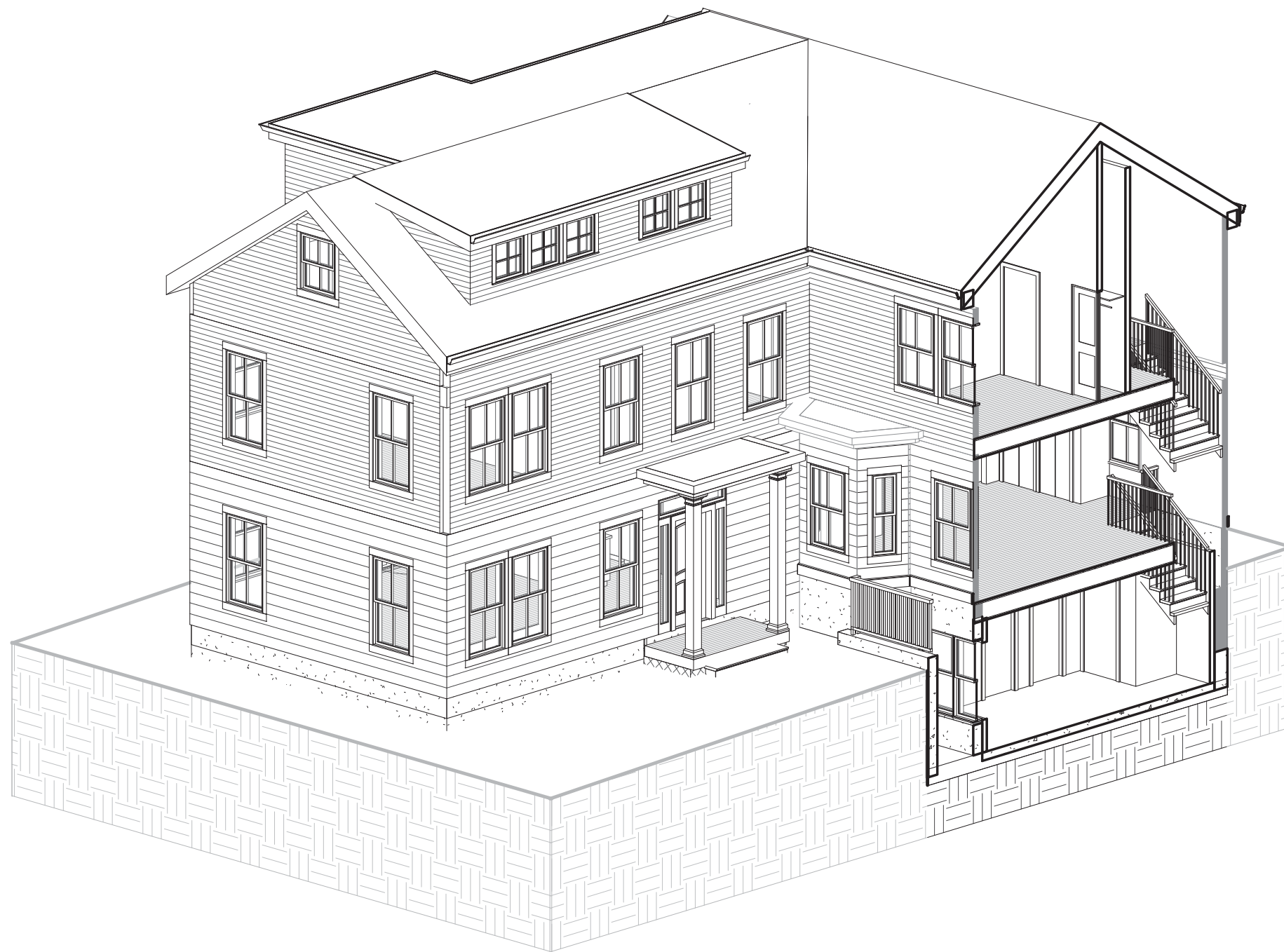


**HOUSE EXTERIOR**

# SECTION EXAMPLE

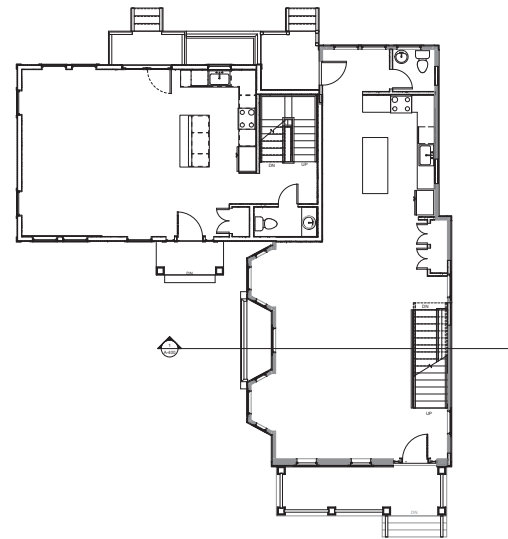


**KEY PLAN**

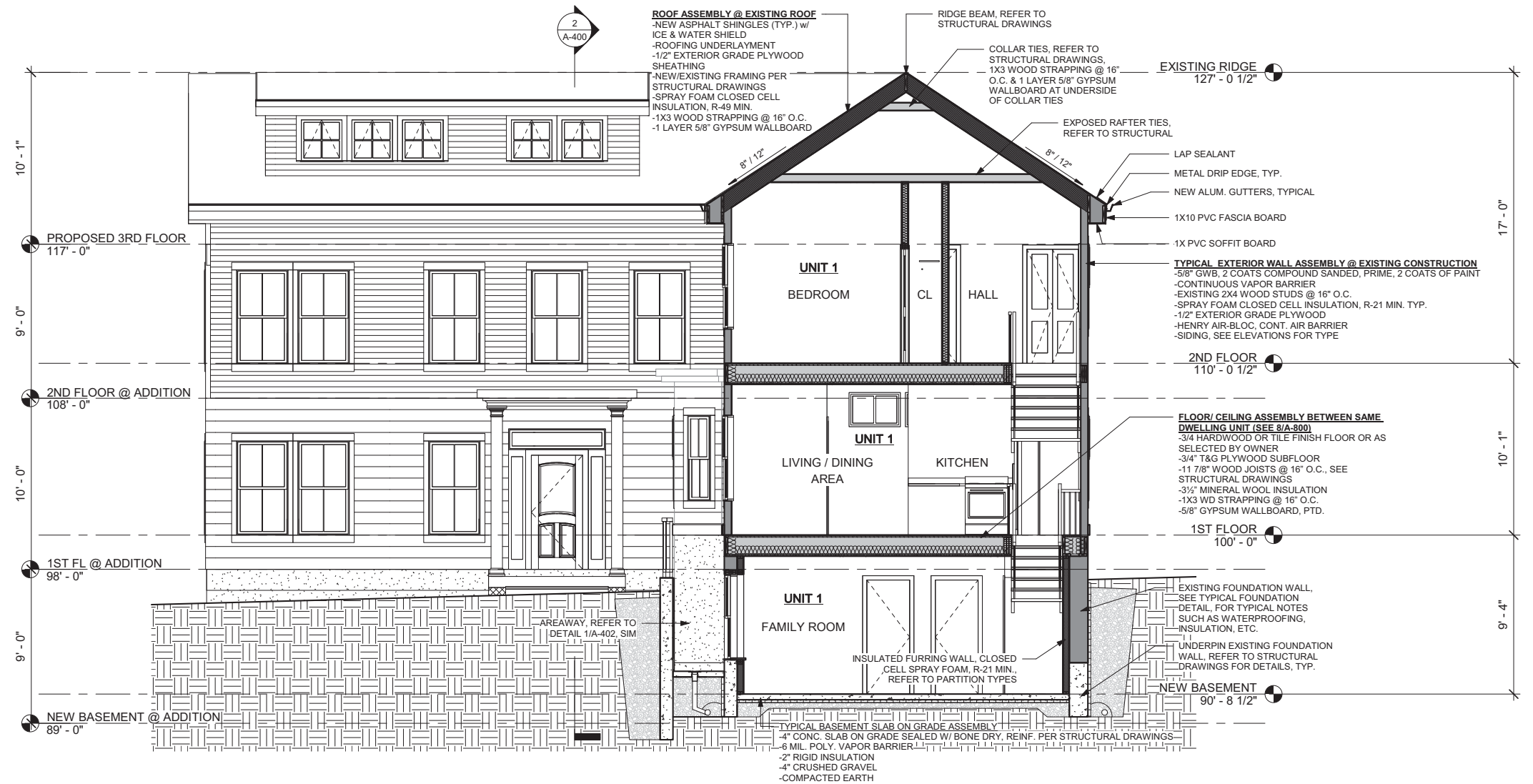


**SECTION 1 CUT**

# SECTION EXAMPLE

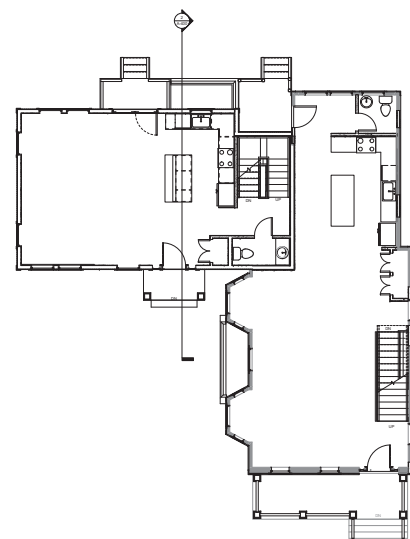


**KEY PLAN**

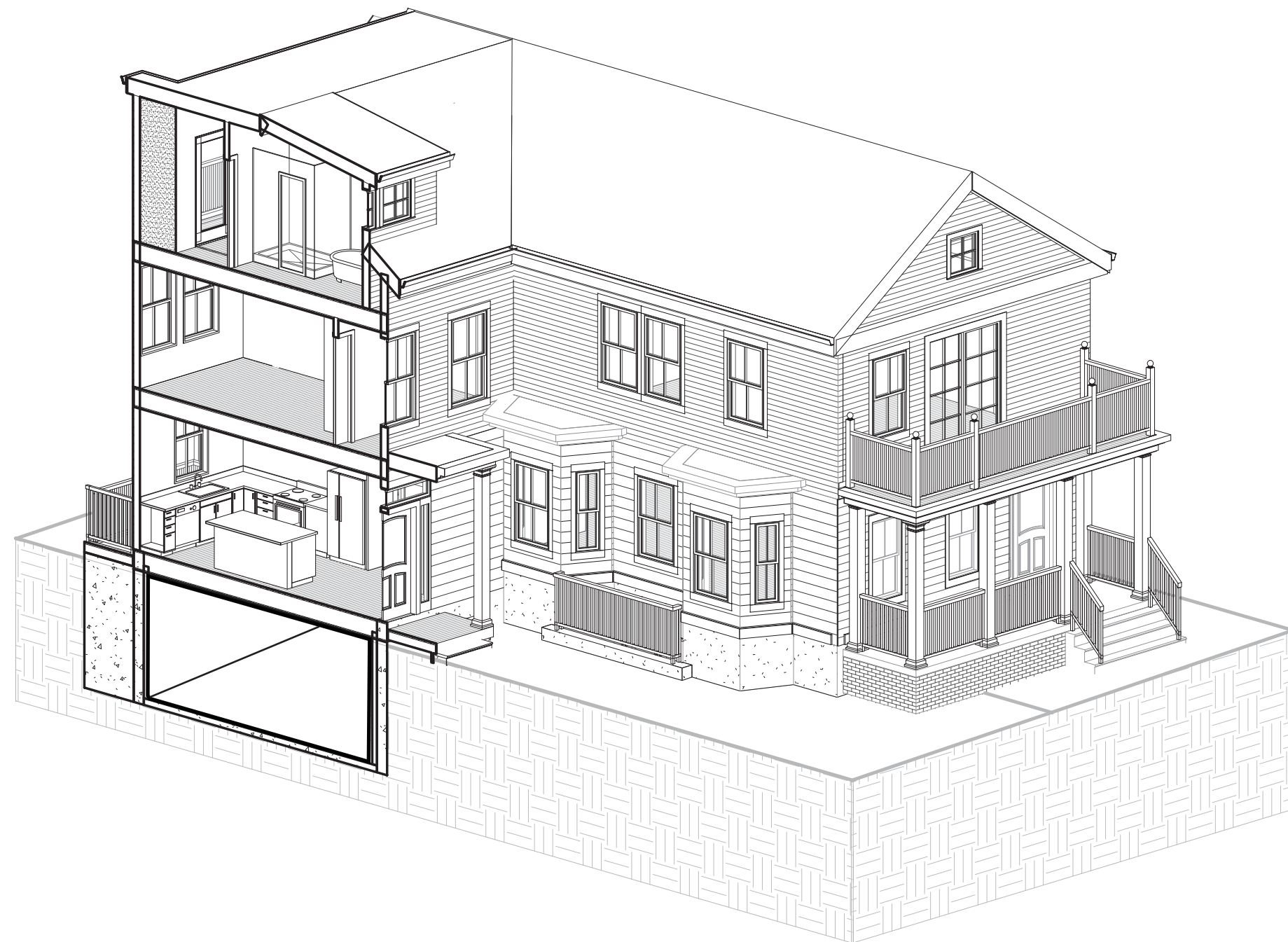


**SECTION 1**

# SECTION EXAMPLE



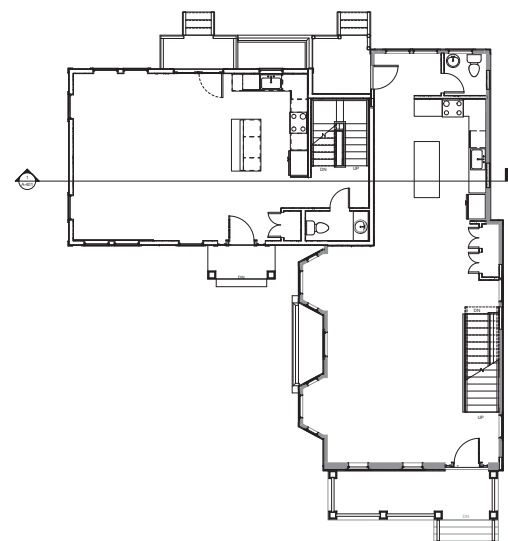
**KEY PLAN**



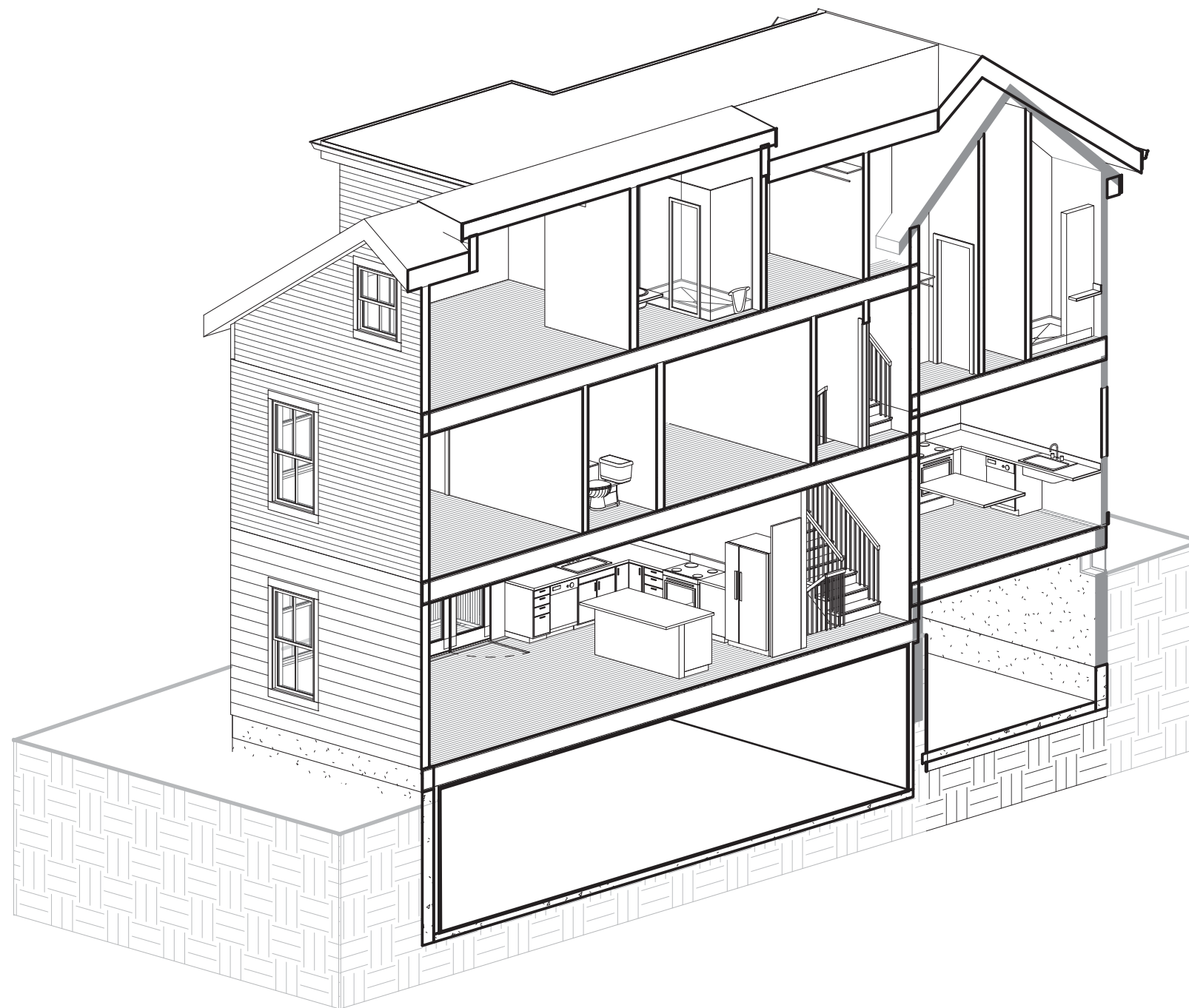
**SECTION 2 CUT**



# SECTION EXAMPLE



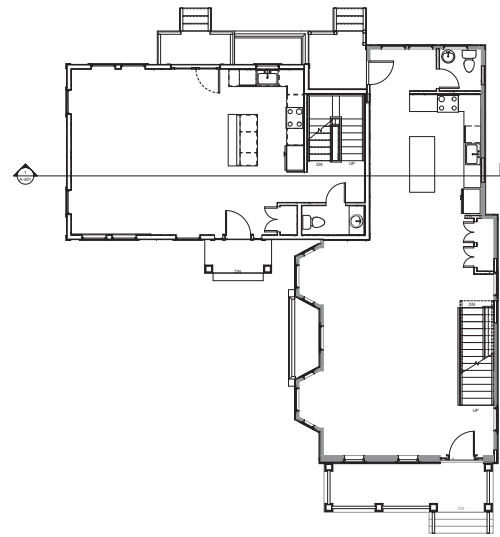
**KEY PLAN**



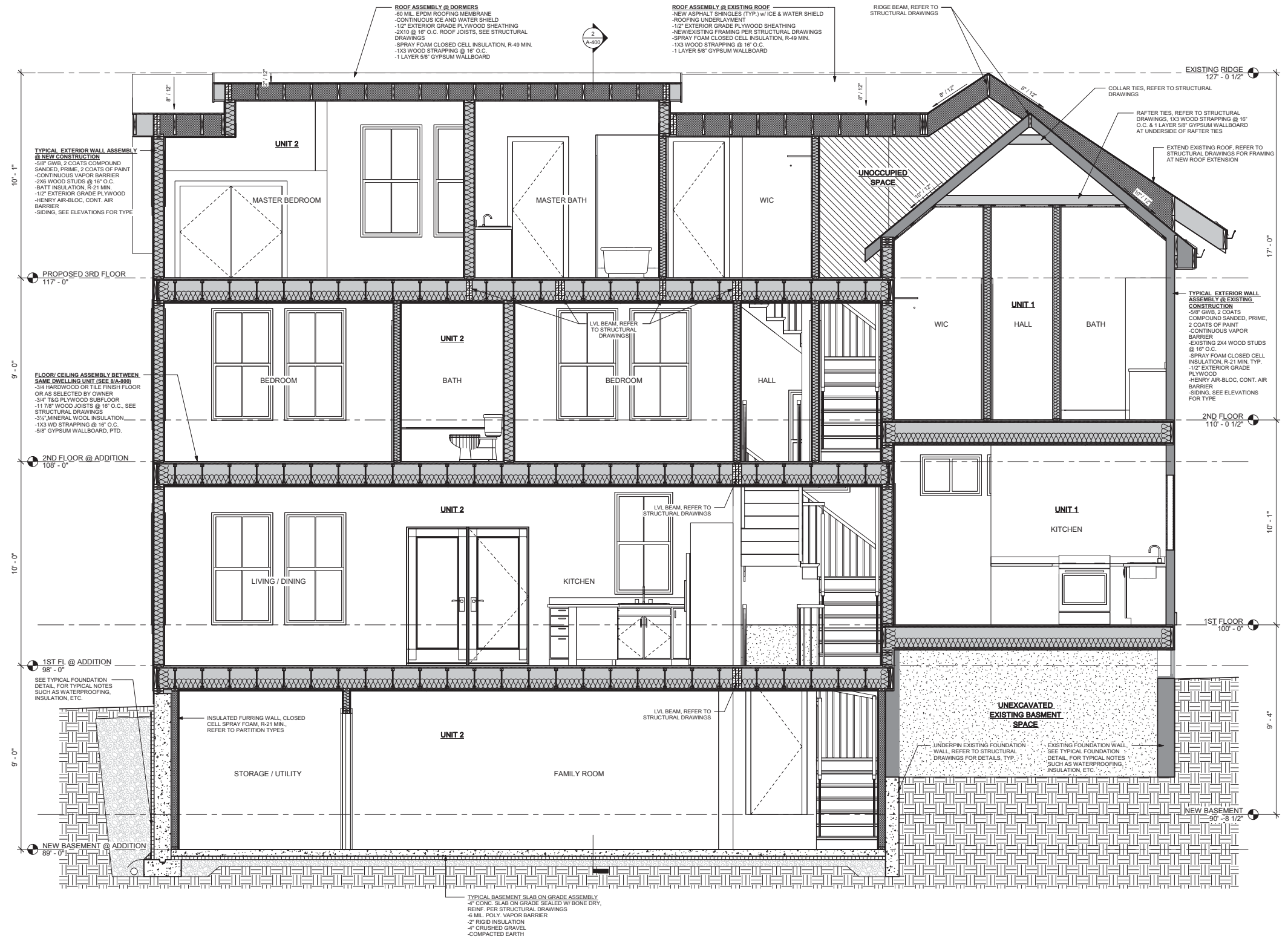
**SECTION 3 CUT**



# SECTION EXAMPLE



## KEY PLAN



## SECTION 3