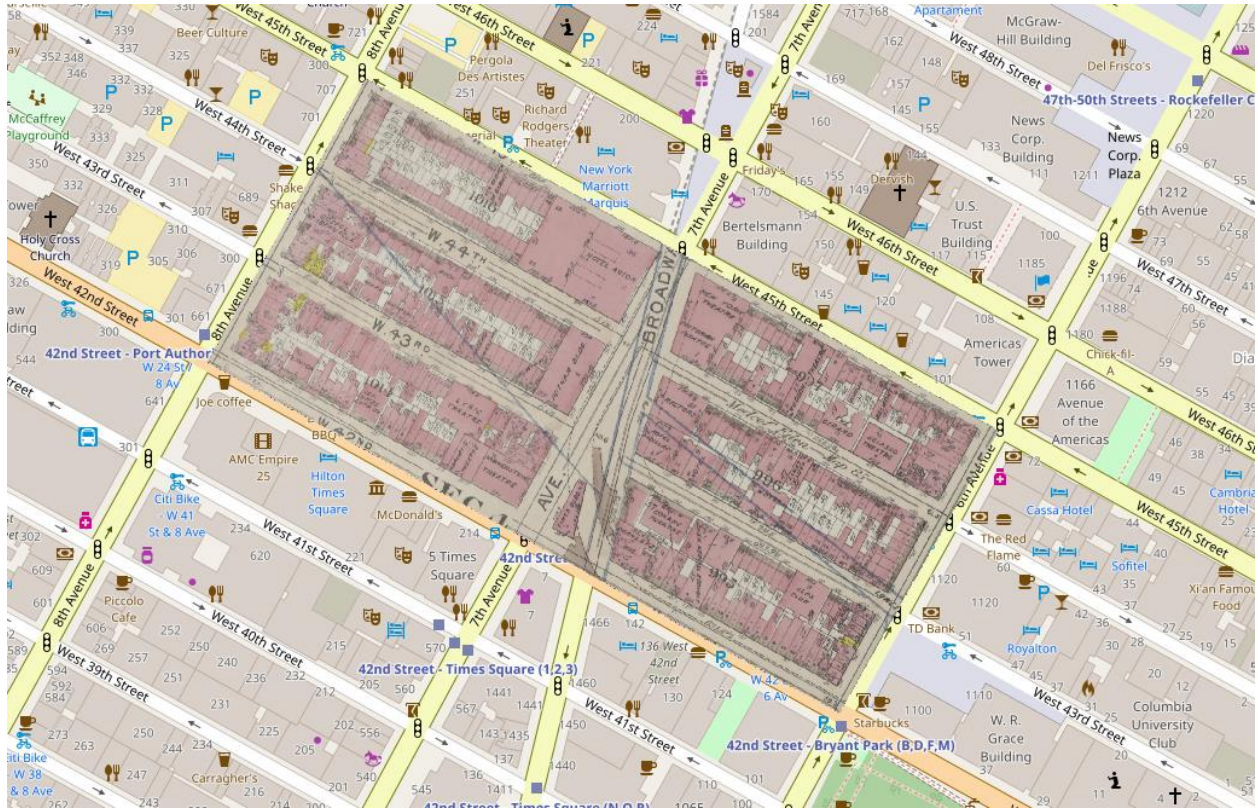


Learning Places Fall 2016

LIBRARY / ARCHIVE REPORT

New York Public Library



DALEY HOLDER

10.28.2016

INTRODUCTION

This is a map of a section of Times Square between West 42nd and West 45th Streets and between Sixth and Eighth Avenues, as it was depicted in 1911. The map depicted is in a pink and white color. What Times Square looked back then is very much different from the Times Square of the present day.

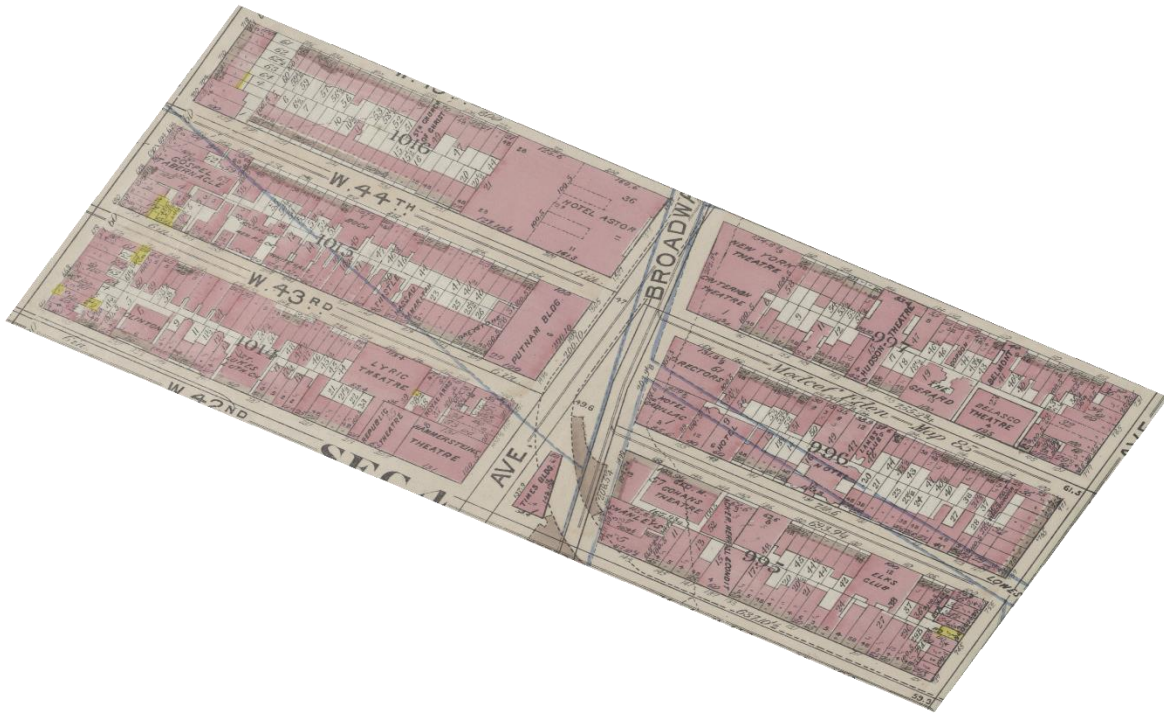
PRE-VISIT REFLECTION

Prior to our visit, we learned about NYPL's Map Warper and how to use it by watching a tutorial video. That way, we could get an idea of how we can rectify an old map to what it looks like today.

SOURCES found

1. Plate 20: Bounded by W. 47th Street, E. 47th Street, Lexington Avenue, E. 36th Street, W. 36th Street, and Eighth Avenue. Atlas of the city of New York, borough of Manhattan by by George W. and Walter S. Bromley. (1911)

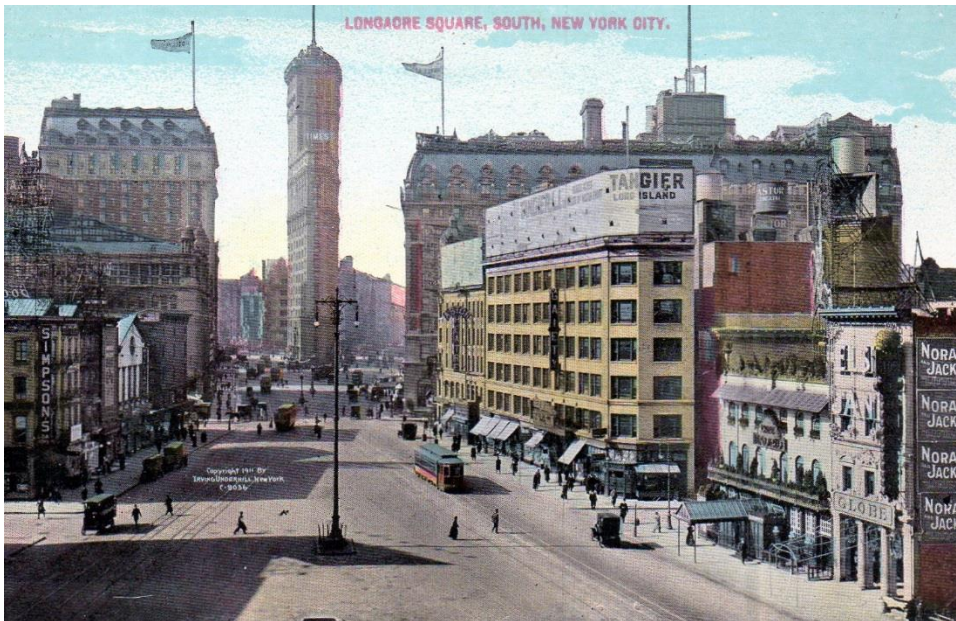
DOCUMENTATION of site & resources (maps/archival documents/ photos)



A section of Times Square (Between W. 42nd and W. 45th Streets and Sixth and Eighth Avenues) as it was depicted on a map in 1911.



Times Square at Night, looking South from 46th Street, 1911



A color postcard of Times Square in New York City, circa 1911.



Broadway at night, looking south from 43rd Street, 1911.



Times Square at Night, as it looked like in 1934.

DISCOVERIES

1. Neighborhood History
 - a. Originally known as Longacre Square
 - b. Renamed Times Square in 1904 after *The New York Times* moved its operations to a building on the site of the former Pabst Hotel.
2. Key Events / Historical Dates
 - a. December 31, 1907: Times Square held its first New Year's Eve ball drop
 - b. 1945: On May 8th, a massive crowd at Times Square celebrated V-E Day, after German forces surrendered, ending World War II in Europe; over 3 months later, on August 15, Times Square held the largest public celebration in its history, as crowds celebrated V-J Day, after the announcement of Japan's surrender, ending World War II in the Pacific.
3. Key Players
 - a. Adolph S. Ochs

- b. George B. McClellan, Jr.
 - c. Irving Berlin
 - d. Charlie Chaplin
 - e. Fred Astaire
 - f. Ed Koch
 - g. David Dinkins
 - h. Rudolph Giuliani
4. Relationship Key Players
- a. xx
 - b. xx
5. Public Perception of Key Events
- a. xx
 - b. xx
 - c. xx
6. Important Changes to Neighborhood
- a. After World War I, Times Square grew into a cultural hub filled with theaters, music halls, and upscale hotels.
 - b. The growth of advertising also contributed to the growth of Times Square.
7. Other Observations
- a. xx
 - b. xx
 - c. xx

TOPICS & KEYWORDS

TERMS useful for conducting further research. TERMS useful for conducting further research. TERMS useful for conducting further research. TERMS useful for conducting further research. TERMS useful for conducting further research. TERMS useful for conducting further research. TERMS useful for conducting further research.

QUANTITATIVE DATA for Area of Study

Subject	Data
---------	------

Land Ownership	
Number of Blocks	
# of Buildings on a Typical Block	
Materials	
# of Stories of Buildings	
Residential Bldgs	
Empty Lots	
Commercial Uses	
Industrial Uses	
Other Data	
Other Data	
Other Data	

QUESTIONS to Research Further

QUESTIONS:

1. Lorem ipsum dolor sit amet?
2. Consectetur adipiscing elit?
3. Sed diam nonummy nibh euismod?

RESEARCH METHOD/ ADDITIONAL SOURCES NEEDED TO ANSWER EACH QUESTION ABOVE:

1. Question 1
 - a. xx
 - b. xx
 - c. xx
2. Question 2
 - a. xx
 - b. xx
 - c. xx
3. Question 3
 - a. xx
 - b. xx
 - c. xx

SUMMARY / POST VISIT REFLECTION

After visiting the New York Public Library, and using the Map Warper site, I got to learn more about Times Square in the past and compared it to what it looks like today.