

CET4772: Intro to Network Visualizer 8

OBJECTIVES

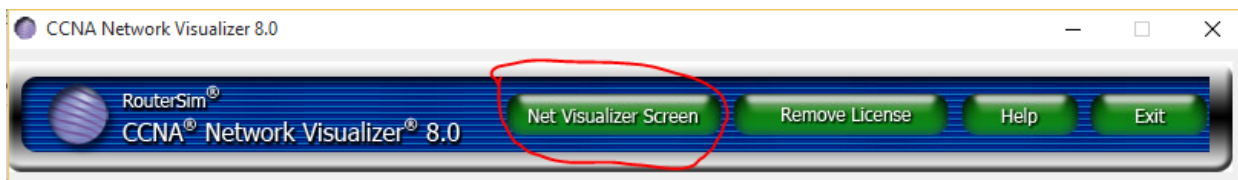
1. Get familiar with the environment of Network Simulator 8.
2. Create, edit, and configure simple network topologies.

BACKGROUND

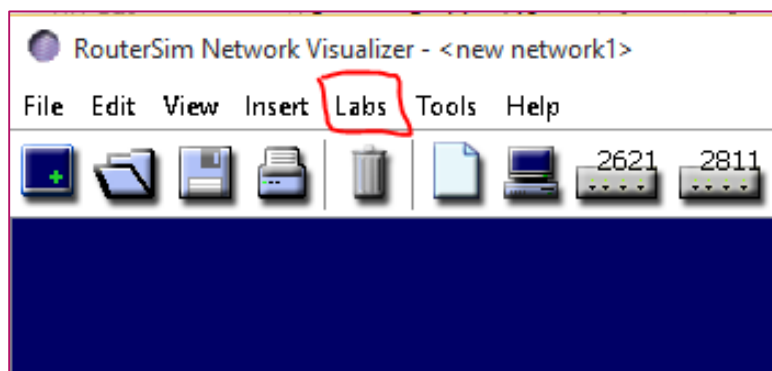
RouterSim's CCNA® Network Visualizer® 8.0 is a CCNA router and switch simulator that offers as many features and flexibility as you will find in the IT market. Prepare for Cisco exam 100-101, 200-101, and 200-120 with this program. ICND1 has drastically changed from its predecessor. There is a lot more material to understand. Plus, the exams focus more on troubleshooting. You can design, build and configure your own network. With this program you are empowered to build, test and preview a large variety of networks!

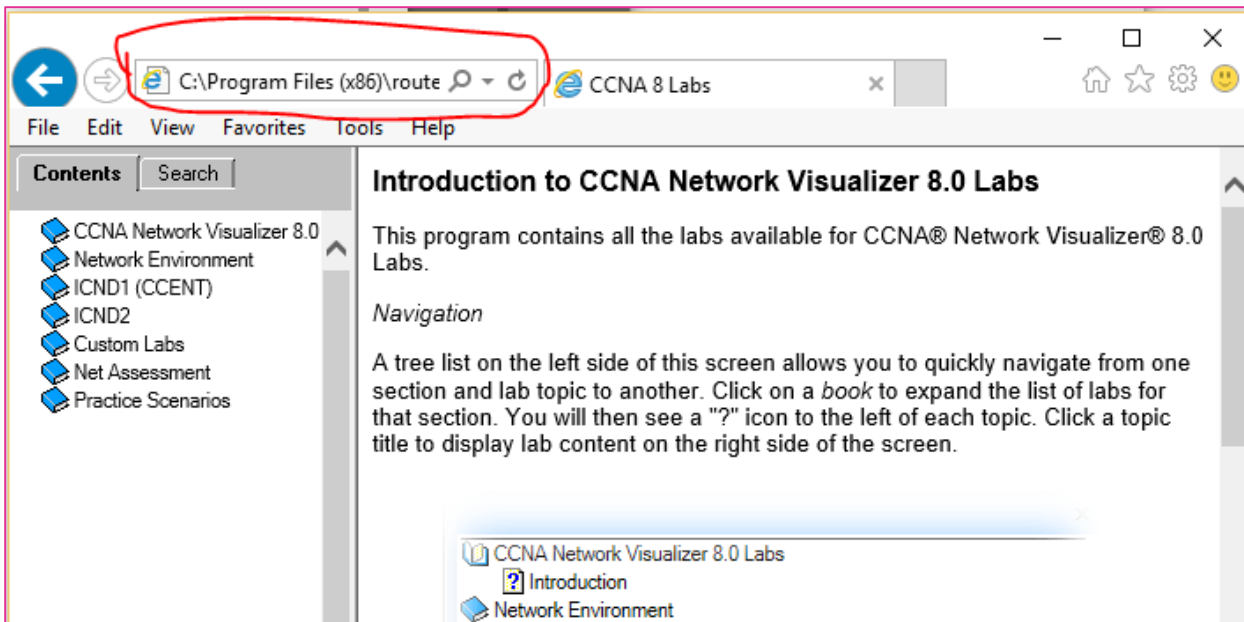
RUNNING ROUTERSIM'S NETWORK VISUALIZER 8

- Network Visualizer is already installed in the classroom computer. Look for it, the main icon look like this.
- Click on the icon to open it.
- Alternatively, look for it in the list of "All programs". It would be under RouterSim folder.
- Once you run the program will show a window as the following.



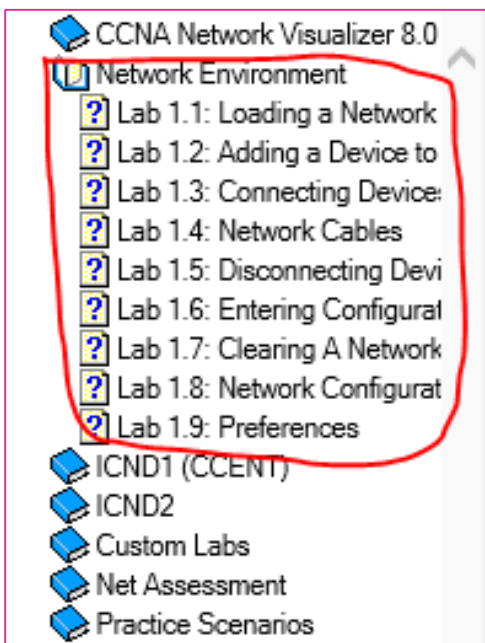
- Click in the "Net Visualizer Screen" button to open the main window of the program. This will open a webpage in your browser as the following.
- To open the material you will working today, you need to select the option "Labs" on the main menu. Then select the option "Documentation".



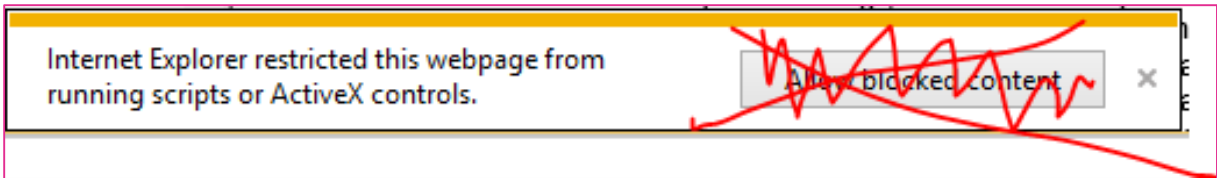


NOTE: The documentation does not run well in all the browser. Actually, the only one that is guaranteed to work is MS Internet explorer. If any other browser has been opened, copy the URL (the one circled in the above image), open **Internet Explorer**, and paste the URL.

- Your assignment is to complete the sections circled in the following picture.

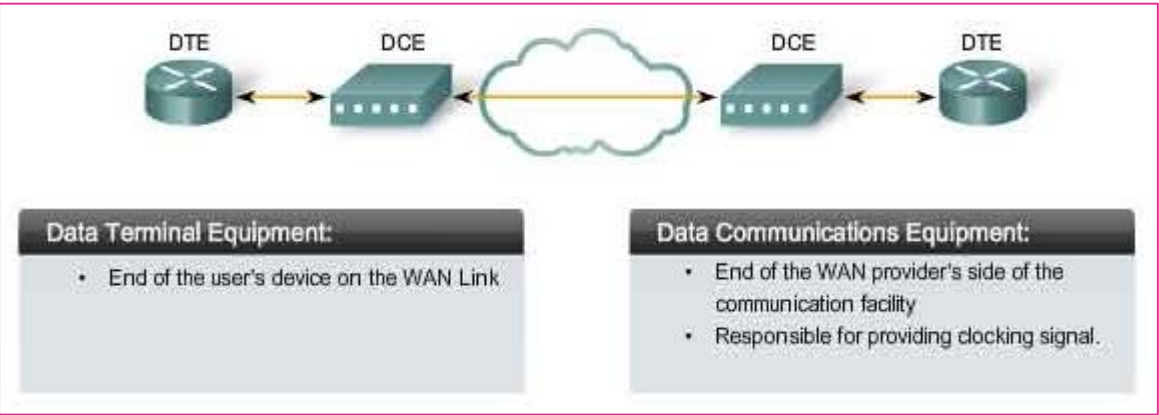


Warning if you get to see a message like the following, please DO NOT click on the Allow blocked content button. This would make the left side menu disappear. **Just ignore it.**



QUESTION TO ANSWER AND SUBMIT

- 1. How many options or submenus has the option Practice Scenarios?
- 2. How many FastEthernet ports has the 3560 Switch?
- 3. In Lab1.3 you asked to connect two routers. When you try to connect the first one, the system ask you if you want to use DTE or DCE (DCE provides clock time). The figure below gives a higher level idea of what this means. At this point, the selection does not matter. What option you selected?



- 4. What type of cable (Straight-Through/Cross-over) would you use to connect a router to a switch?
- 5. What type of cable (Straight-Through/Cross-over) would you use to connect a computer host to a switch?
- 6. What type of cable (Straight-Through/Cross-over) would you use to connect a router to a router?
- 7. What type of cable (Straight-Through/Cross-over) would you use to connect a host computer to a switch?
- 8. In Lab1.6 you are show how to enter to a configuration mode of a device using the console. The following statement is True or False? Network Visualizer allows you to have several **console** windows open at the same time, one for each device in your topology network.
- 9. What do you think? How is the Network Configurations Window useful for you?
- 10. Take a screenshot of your Network Configurations Window.