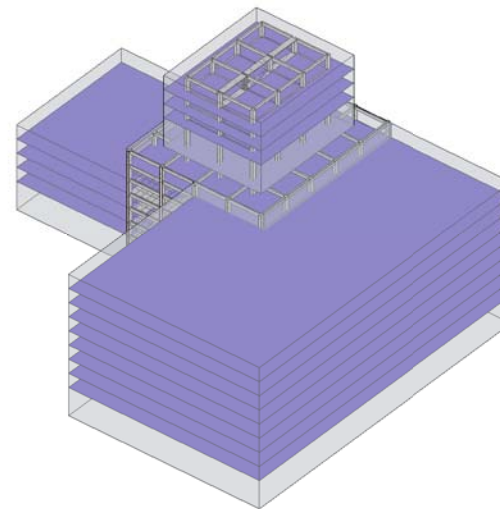


② Perspective 2

| Mass Floor Schedule | | | | |
|---------------------|------------|-----------------|----------|------|
| Level | Floor Area | Floor Perimeter | Comments | Mark |
| Level 2 | 11347 SF | 426' - 10 1/16" | | |
| Level 3 | 11357 SF | 427' - 0 1/16" | | |
| Level 4 | 11366 SF | 427' - 2 1/16" | | |
| Level 5 | 11376 SF | 427' - 4 1/32" | | |
| Level 6 | 11385 SF | 427' - 6 1/32" | | |
| Level 7 | 11394 SF | 427' - 8 1/32" | | |
| Level 8 | 11404 SF | 427' - 10 1/32" | | |
| Level 10 | 5893 SF | 308' - 0" | | |
| Level 11 | 5893 SF | 308' - 0" | | |
| Level 12 | 5893 SF | 308' - 0" | | |
| Level 13 | 5893 SF | 308' - 0" | | |
| Level 1 | 11338 SF | 426' - 8 1/16" | | |
| Level 2 | 8977 SF | 379' - 0" | | |
| Level 3 | 8977 SF | 379' - 0" | | |
| Level 4 | 8977 SF | 379' - 0" | | |
| Level 1 | 8977 SF | 379' - 0" | | |
| Level 2 | 25873 SF | 730' - 6 1/16" | | |
| Level 3 | 25873 SF | 730' - 6 1/16" | | |
| Level 4 | 25873 SF | 730' - 6 1/16" | | |
| Level 5 | 25873 SF | 730' - 6 1/16" | | |
| Level 6 | 25873 SF | 730' - 6 1/16" | | |
| Level 7 | 25873 SF | 730' - 6 1/16" | | |
| Level 8 | 25873 SF | 730' - 6 1/16" | | |
| Level 1 | 25873 SF | 730' - 6 1/16" | | |



① Perspective 1



| No. | Description | Date |
|-----|-------------|------|
| | | |
| | | |
| | | |
| | | |
| | | |
| | | |
| | | |
| | | |
| | | |
| | | |
| | | |
| | | |
| | | |
| | | |
| | | |
| | | |
| | | |
| | | |
| | | |
| | | |
| | | |
| | | |
| | | |
| | | |
| | | |
| | | |
| | | |
| | | |
| | | |
| | | |
| | | |
| | | |
| | | |
| | | |

PROFESSOR
APTEKAR
PROGRESS 1

PERSPECTIVE VIEW

Drawn by: ZULUAGA PABLO

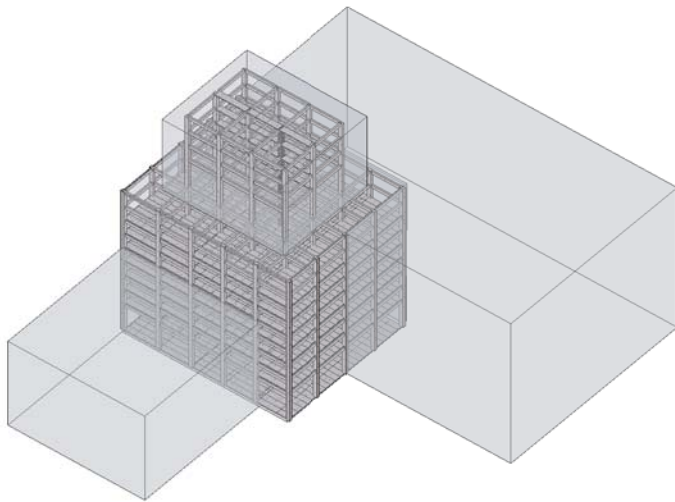
Check by:

Team Member: GIBBYN EDUARDO
MULLER WANG
DANIEL NIEVO

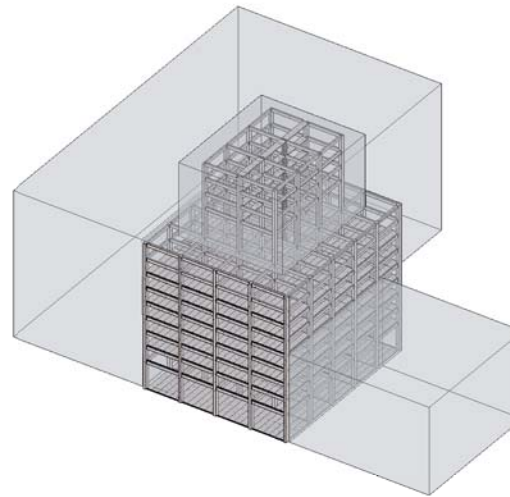
Date: 10/01/13

A101

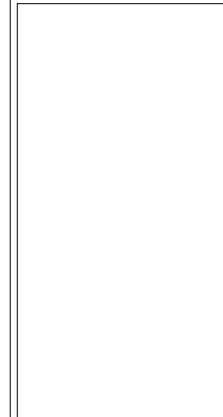
Title:



① Skeleton



② Skeleton 2



| No. | Description | Date |
|-----|-------------|------|
| | | |
| | | |
| | | |
| | | |
| | | |
| | | |
| | | |
| | | |
| | | |
| | | |
| | | |
| | | |
| | | |
| | | |
| | | |
| | | |
| | | |
| | | |
| | | |
| | | |
| | | |
| | | |
| | | |
| | | |
| | | |

PROFESSOR
APTEKAR
PROGRESS 1

STRUCTURAL SKELETON

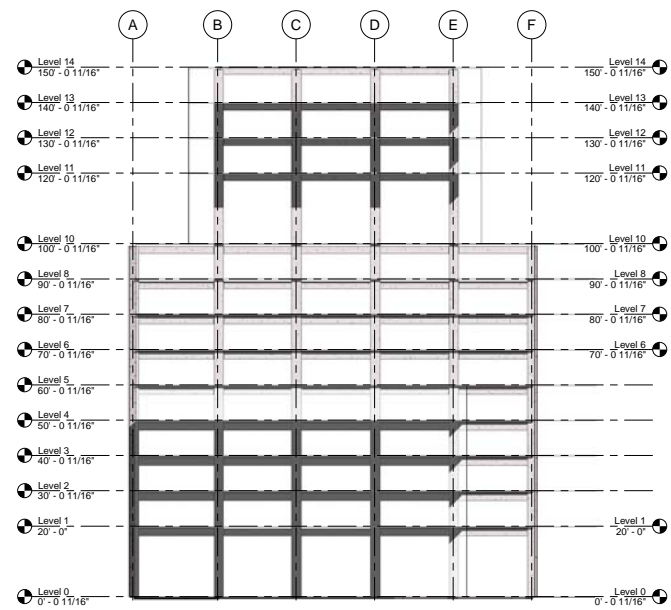
Drawn by: **ZULUAGA PABLO**

Drawn by: ORIGENAL DISEÑADOR
MILLER + GARCIA
INGENIEROS

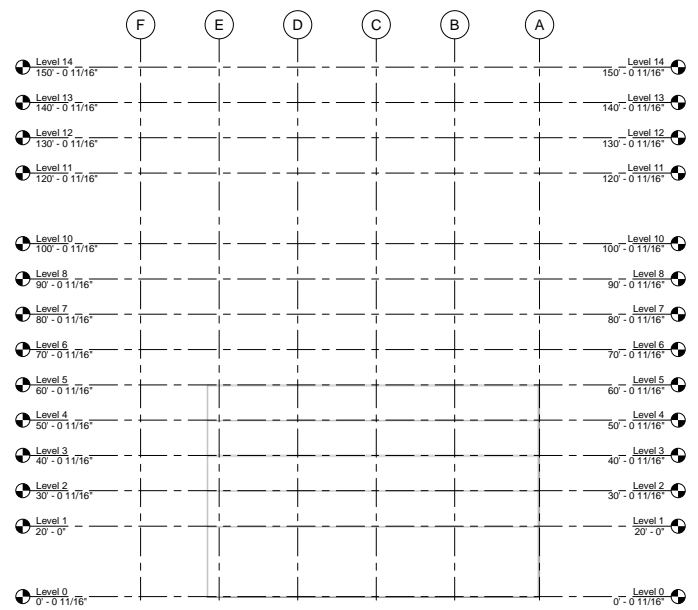
Date: **10/01/13**

A102

Scale: _____



○ South Elev
1/16" = 1'-0"



○ North Elevation
1/16" = 1'-0"

| No. | Description | Date |
|-----|-------------|------|
| | | |
| | | |
| | | |
| | | |
| | | |
| | | |
| | | |
| | | |
| | | |
| | | |
| | | |
| | | |
| | | |
| | | |
| | | |
| | | |
| | | |
| | | |
| | | |
| | | |
| | | |

PROFESSOR
APTEKAR
PROCESS 1

NORTH_SOUTH ELEVATION

Drawn by: ZULUAGA PABLO

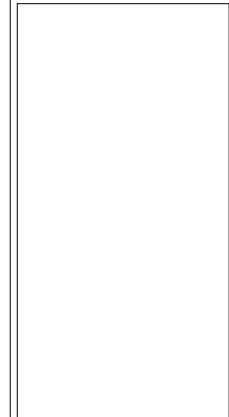
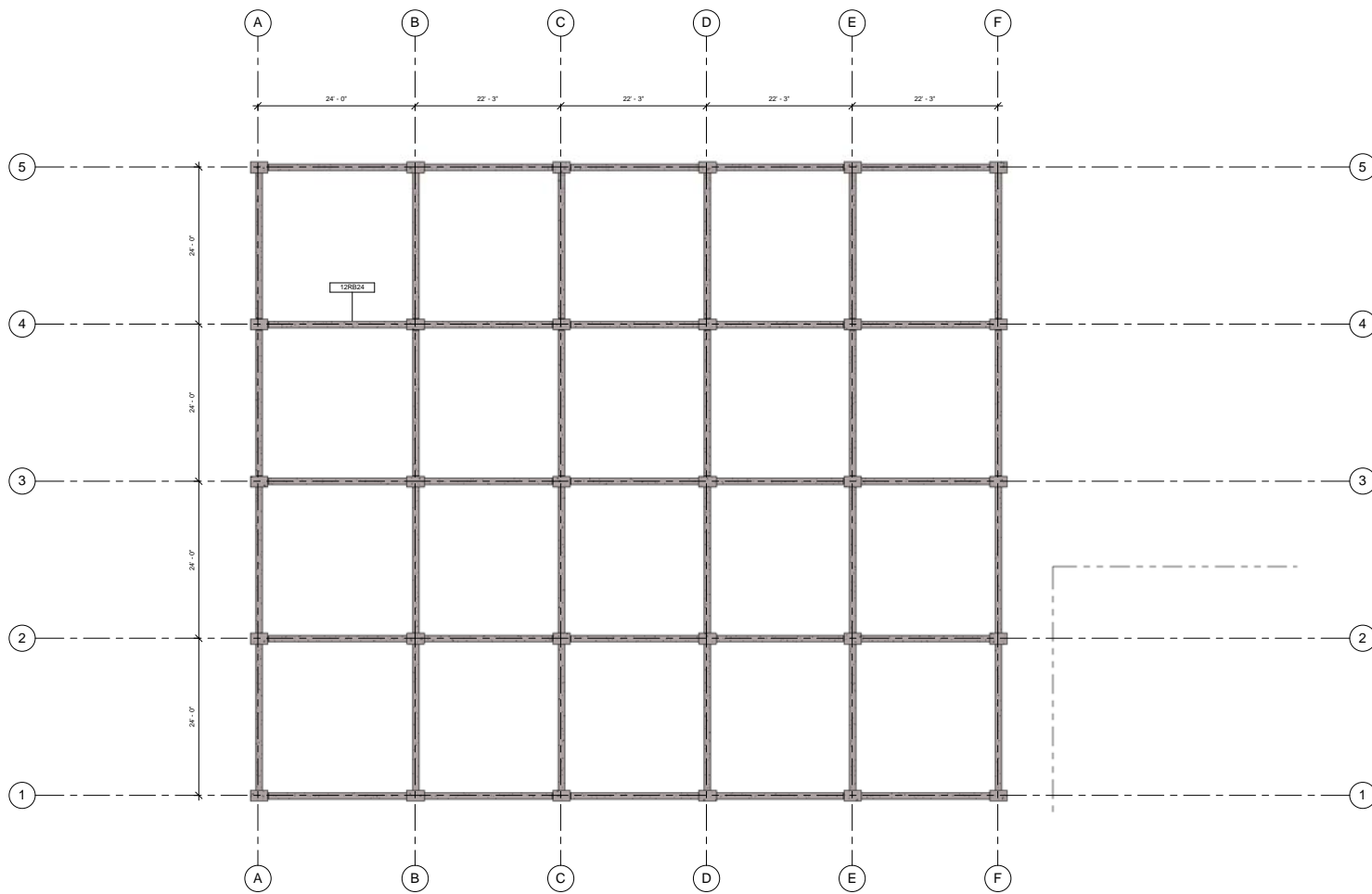
Checked by:

Team Member: OSWALDO EDUARDO BULLER-WALKER SERRANO-FRIGG

Date: 10/01/13

A103

Scale: 1/16" = 1'-0"



| No. | Description | Date |
|-----|-------------|------|
| | | |
| | | |
| | | |
| | | |
| | | |
| | | |
| | | |
| | | |
| | | |
| | | |
| | | |
| | | |
| | | |
| | | |
| | | |
| | | |
| | | |
| | | |
| | | |
| | | |
| | | |
| | | |
| | | |
| | | |
| | | |
| | | |

**PROFESSOR
APTEKAR
PROGRESS 1**

TYPICAL FRAMING PLAN

Drawn by: **PRAM ASSOCIATES**

Checked by:

Scale: **1001/13**

A104

1/8" = 1'-0"

SITE PLAN DIAGRAM



1/8"=10'

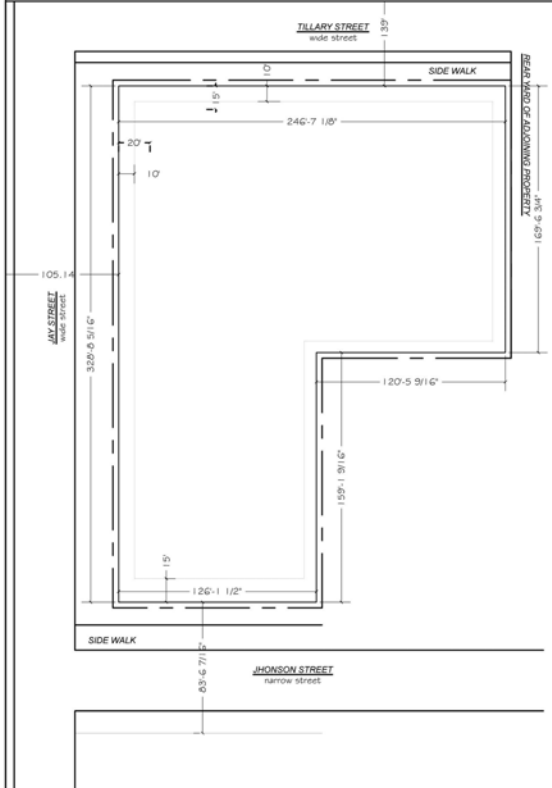
LOT AREA: 139,810 SQ. FT.
(490.42' x 325.25')

LEGEND

C6-4

PUBLIC FACILITY / INSTITUTION

- PROPOSED BUILDING
- MAXIMUM BUILDING ENVELOPE
- BEGINNING PROPERTY LINE

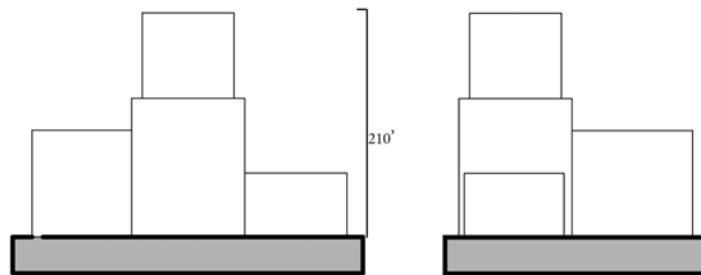
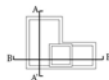
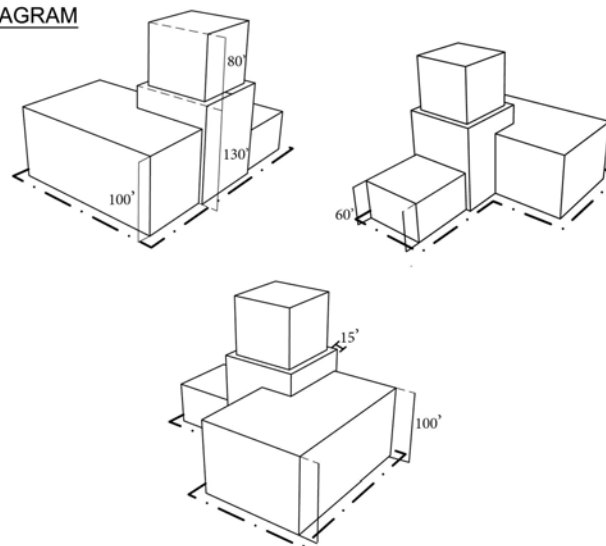


AXONOMETRIC DIAGRAM

REQUIRED SETBACKS
FRONT : 10' PER ZR 23-633
REAR : 8' PER ZR 23-633
SIDE : 15' PER ZR 23-633

86' STREET WALL
AZ PER

210' BUILDING HEIGHT
AZ PER 33-43



Section A-A'

Section B-B'



| No. | Description | Date |
|-----|-------------|------|
| | | |
| | | |
| | | |
| | | |
| | | |
| | | |
| | | |
| | | |
| | | |
| | | |
| | | |
| | | |
| | | |
| | | |
| | | |

| | | |
|------------------------------|---|--|
| PROFESSOR APTEKAR PROGRESS I | | |
| ZONING | | |
| Client: | ZULUAGA PABLO | |
| Designer: | | |
| Team Members: | SINGH, YADAV, JAIN, KUMAR, SHARMA, PANDIT | |
| Date: | 10/01/13 | |
| A105 | | |
| Scale: | | |