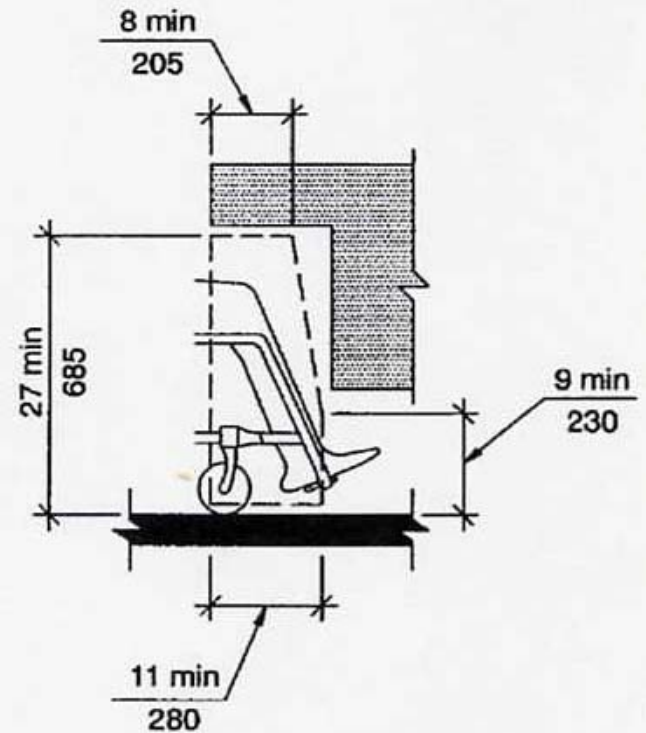
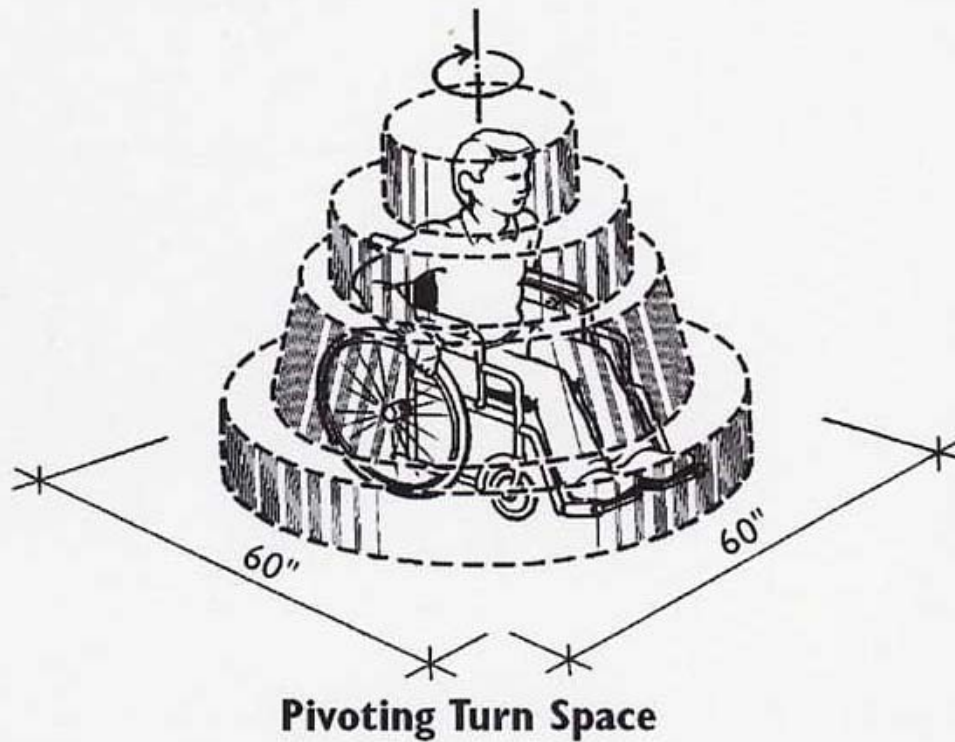


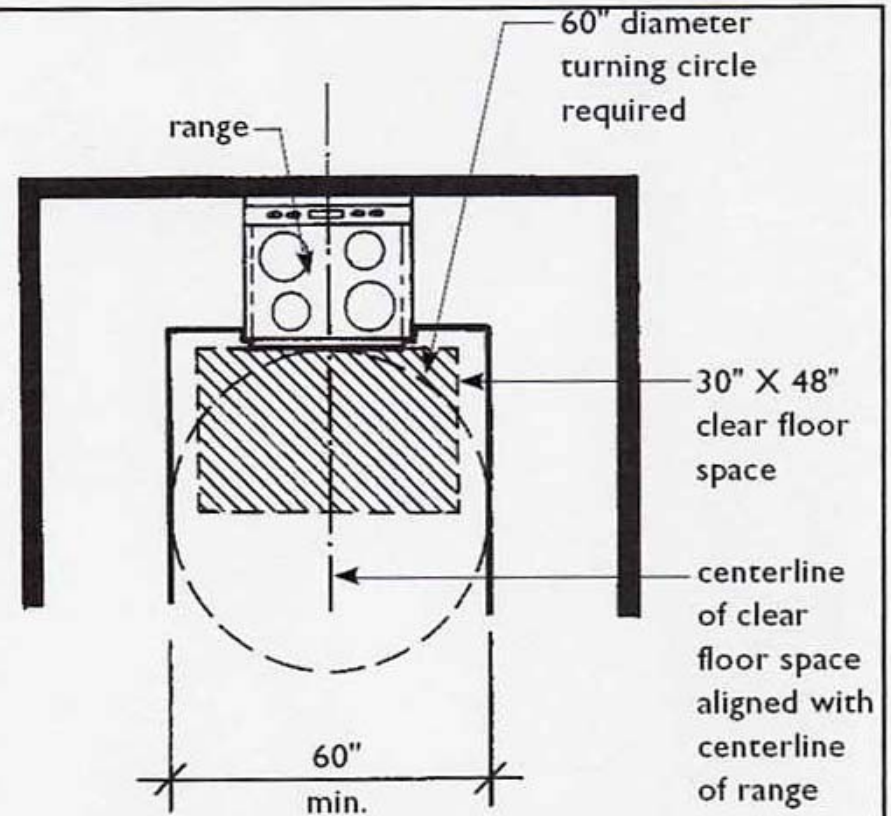
James P. Colgate, RA, Esq.
Assistant Commissioner for Technical
Affairs and Code Development
Division of Technical Affairs

- **ADMINISTRATIVE
PROVISIONS**
- **OF THE**
- **2008 CONSTRUCTION
CODES**

Building Blocks (A117.1 Section 304)

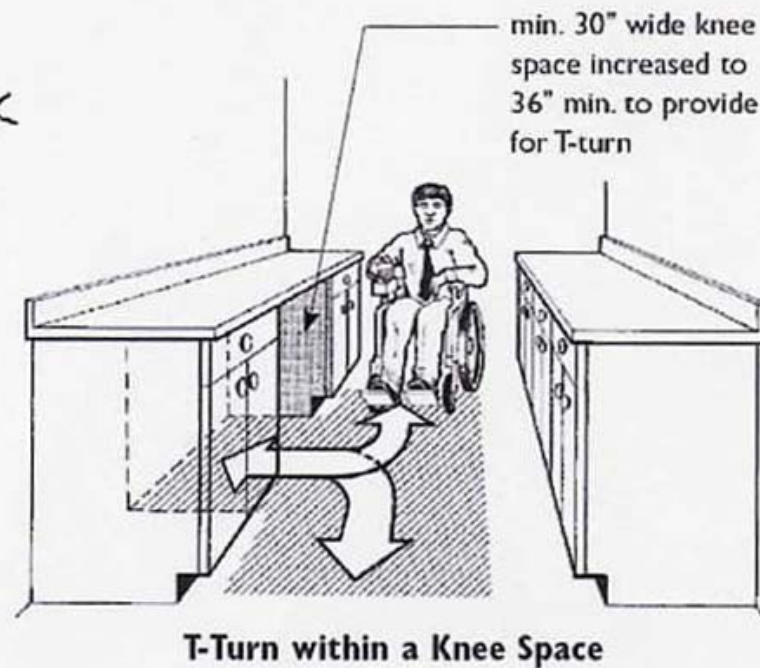
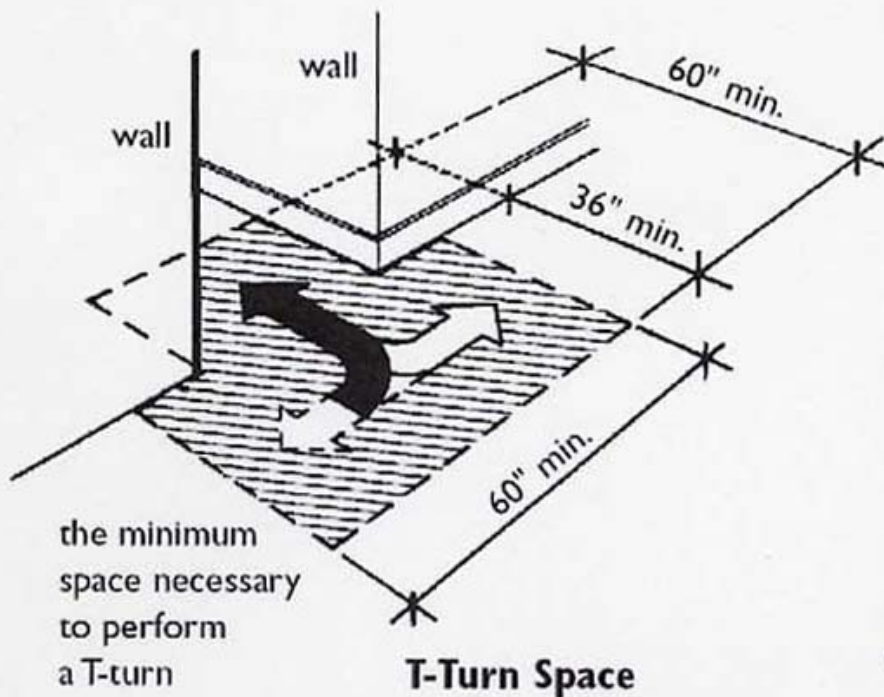


Example of Turning Circle Application



**60" Diameter Turning Circle
when Sink (Only), Cooktop, or Range
is at Bottom of U-Shaped Kitchen**

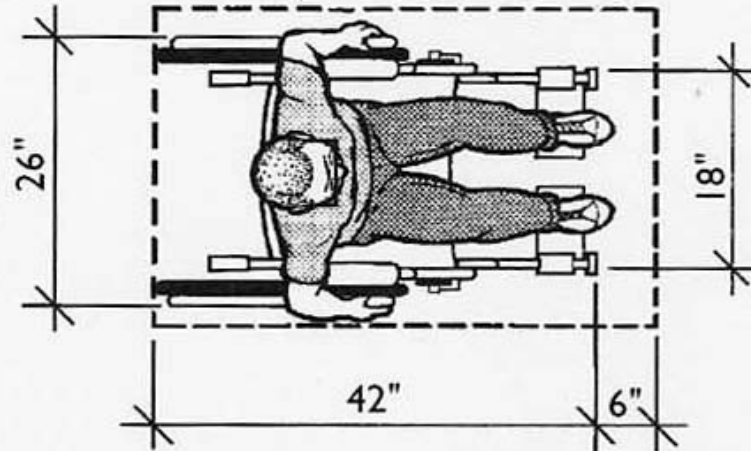
Building Blocks (A117.1 Section 304)



Building Blocks (A117.1 Section 305)

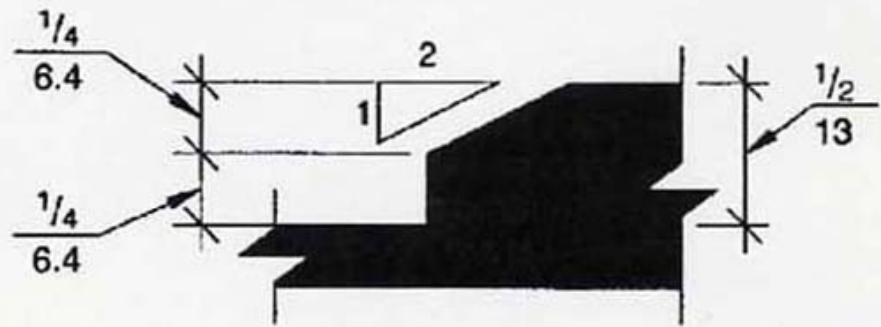
30" X 48" clear floor space

footrests and toes may extend farther for some people

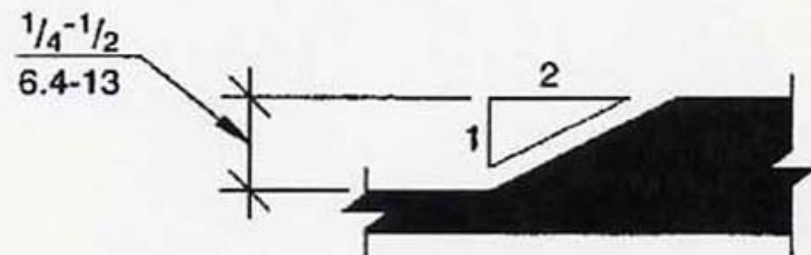


Space Allowances and Approximate Dimensions of Adult-Sized Wheelchairs

Building Blocks (A117.1 Section 303)



(a)



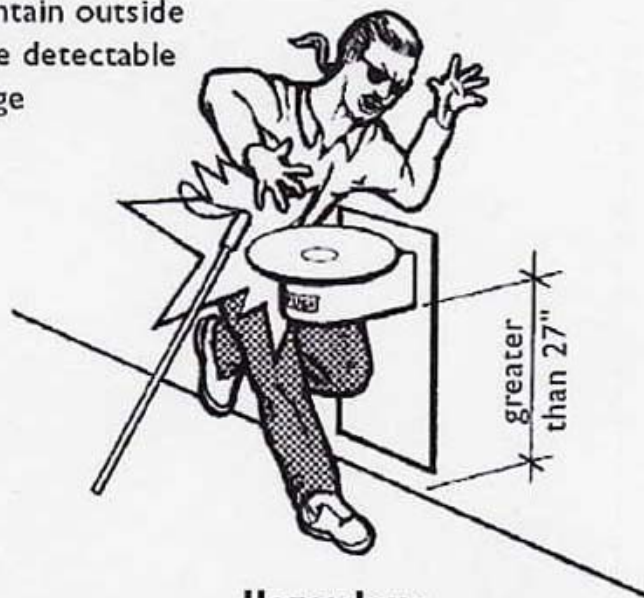
(b)

Fig. 303.3
Beveled Changes in Level

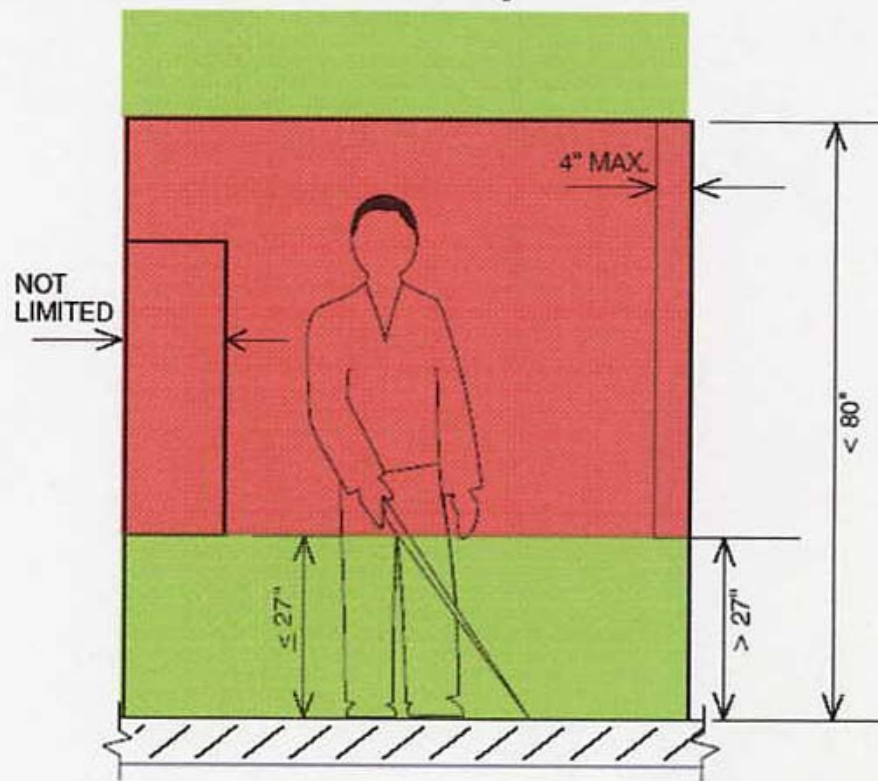


Building Blocks (A117.1 Section 307)

bottom edge of fountain outside cane detectable range

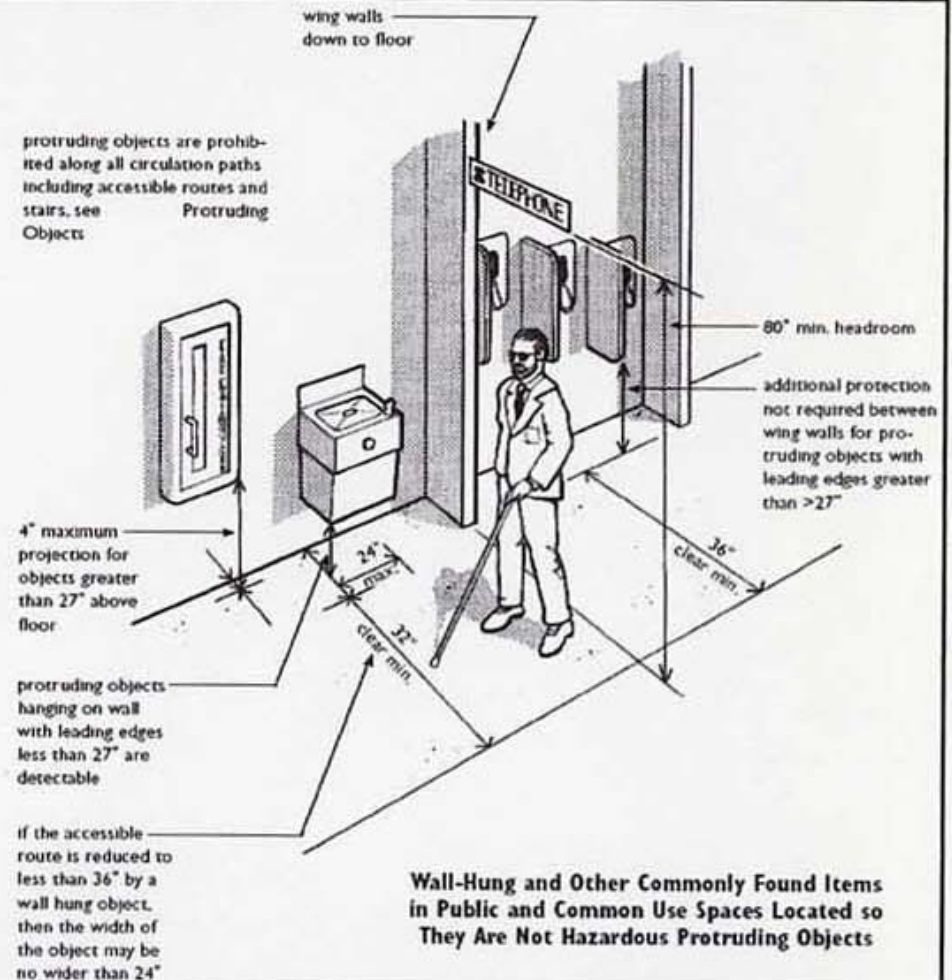


Hazardous Protruding Objects



Building Blocks (A117.1 Section 307)

protruding objects are prohibited along all circulation paths including accessible routes and stairs, see Protruding Objects



Building Blocks (A117.1 Section 308)

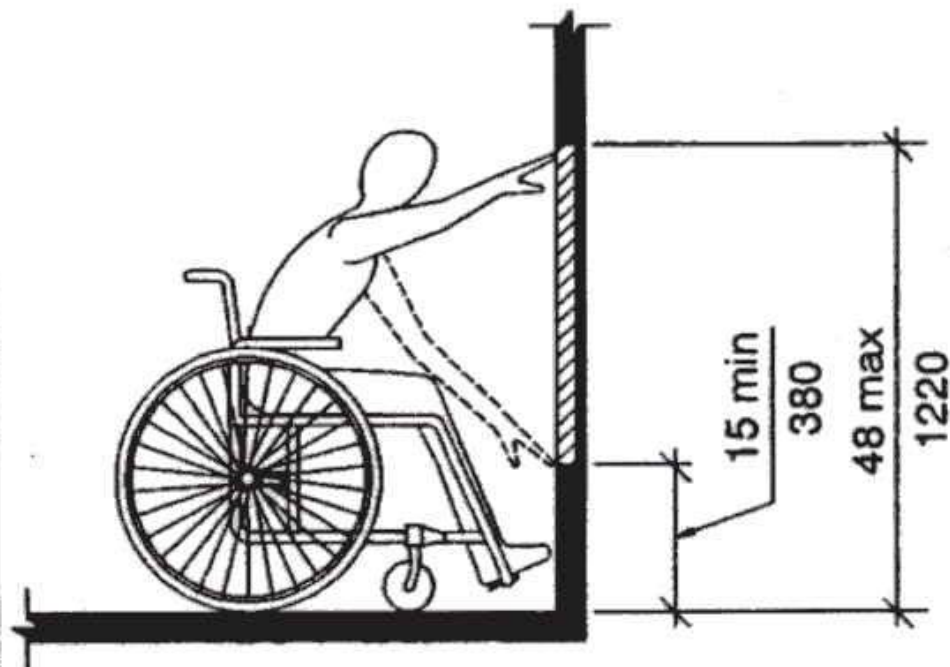
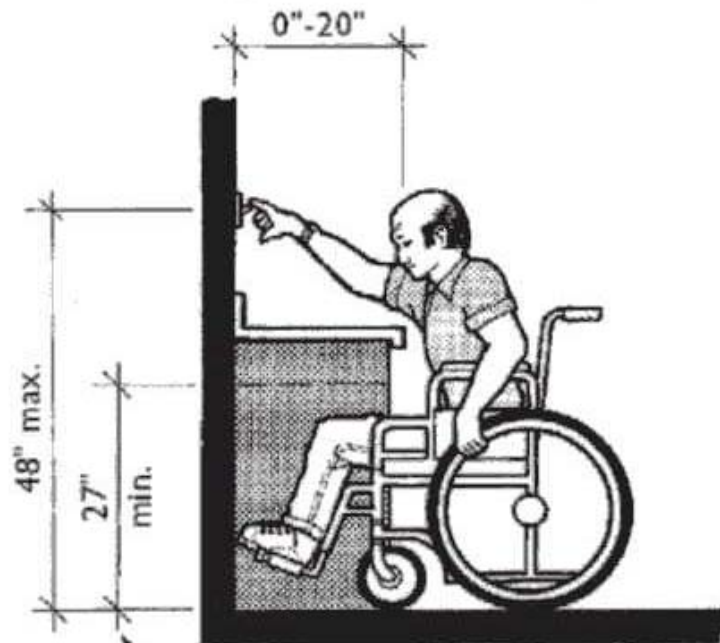
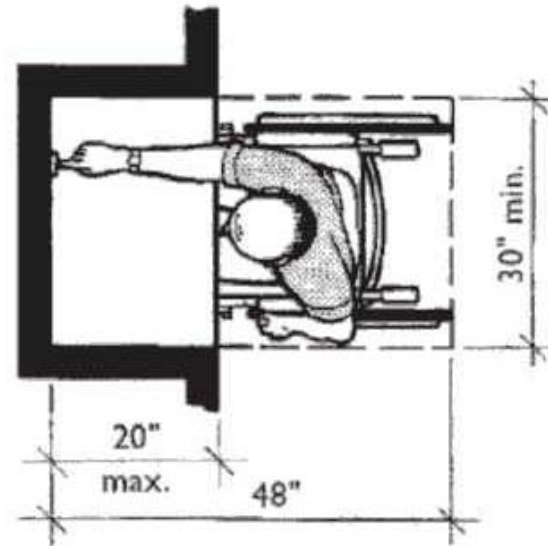


Fig. 308.2.1
Unobstructed Forward Reach

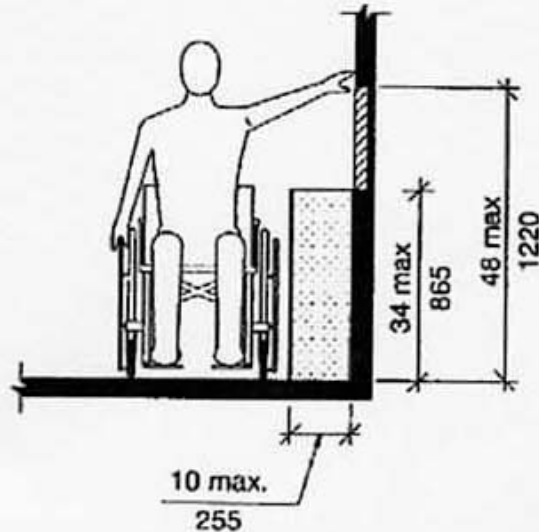
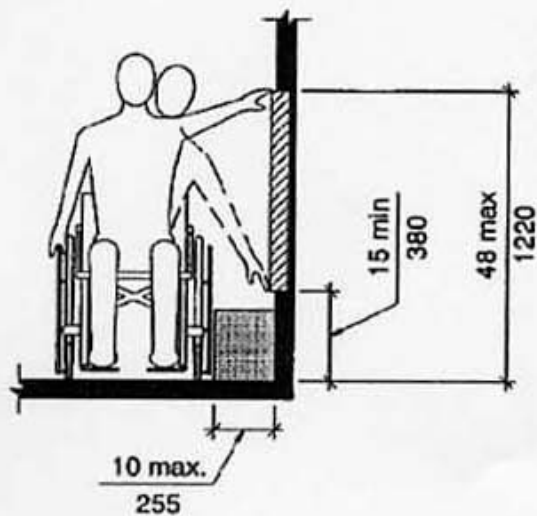
Building Blocks (A117.1 Section 308)



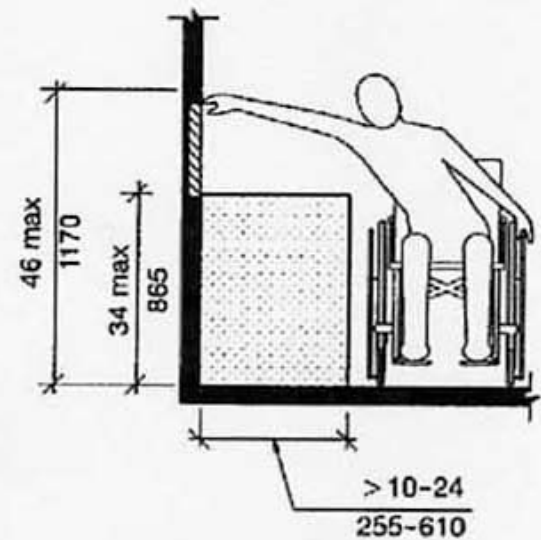
vertical
clearance at
kneespace



Building Blocks (A117.1 Section 308)



(a)



(b)

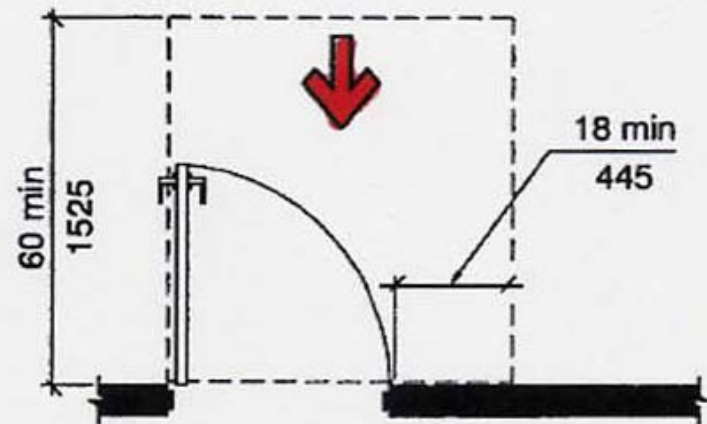
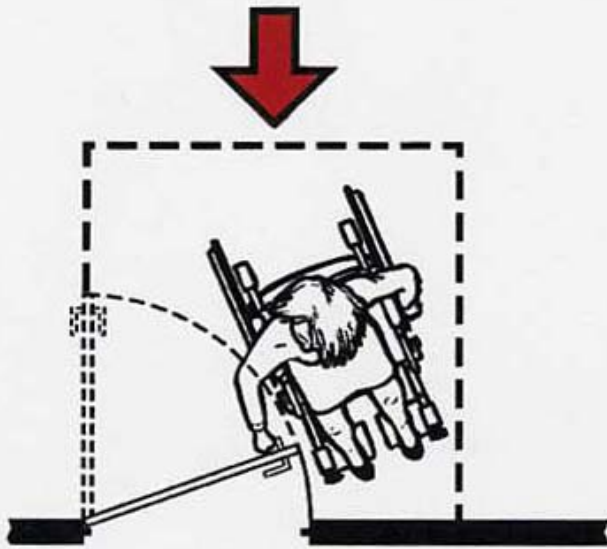
Entrances (BC 1105)

Public entrance: 100% Accessible

Service entrance: Must be accessible if it is the only entrance to a building

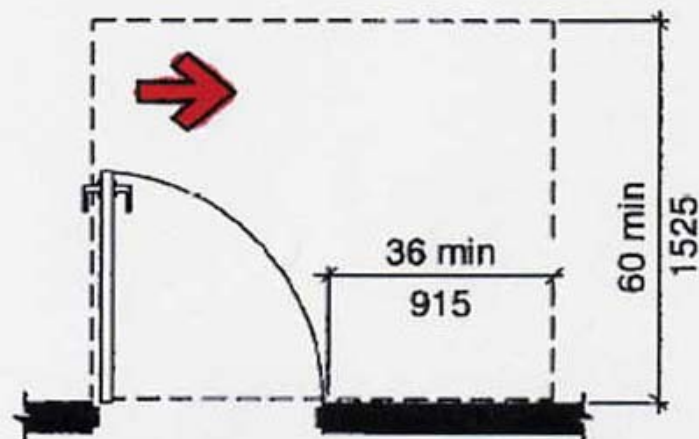
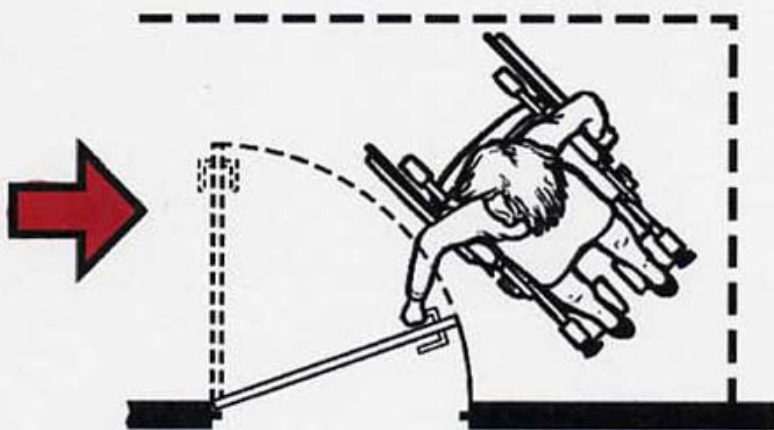
Restricted entrance: 100% Accessible

Door and Doorway (A117.1 Section 404)



(a) Front Approach, Pull Side

Door and Doorway (A117.1 Section 404)

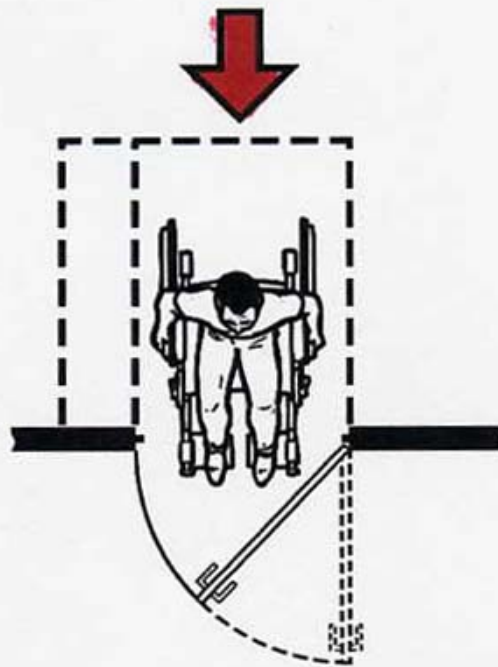


(c) Hinge Approach, Pull Side

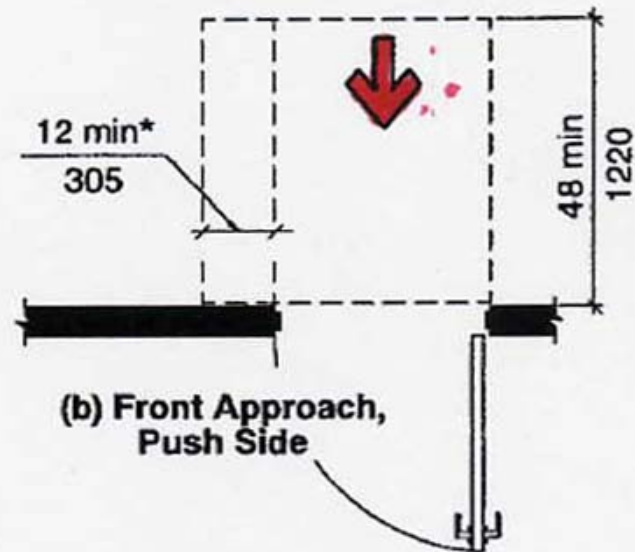
* If both closer and latch are provided

** 48 min (1220) if both closed and latch provided

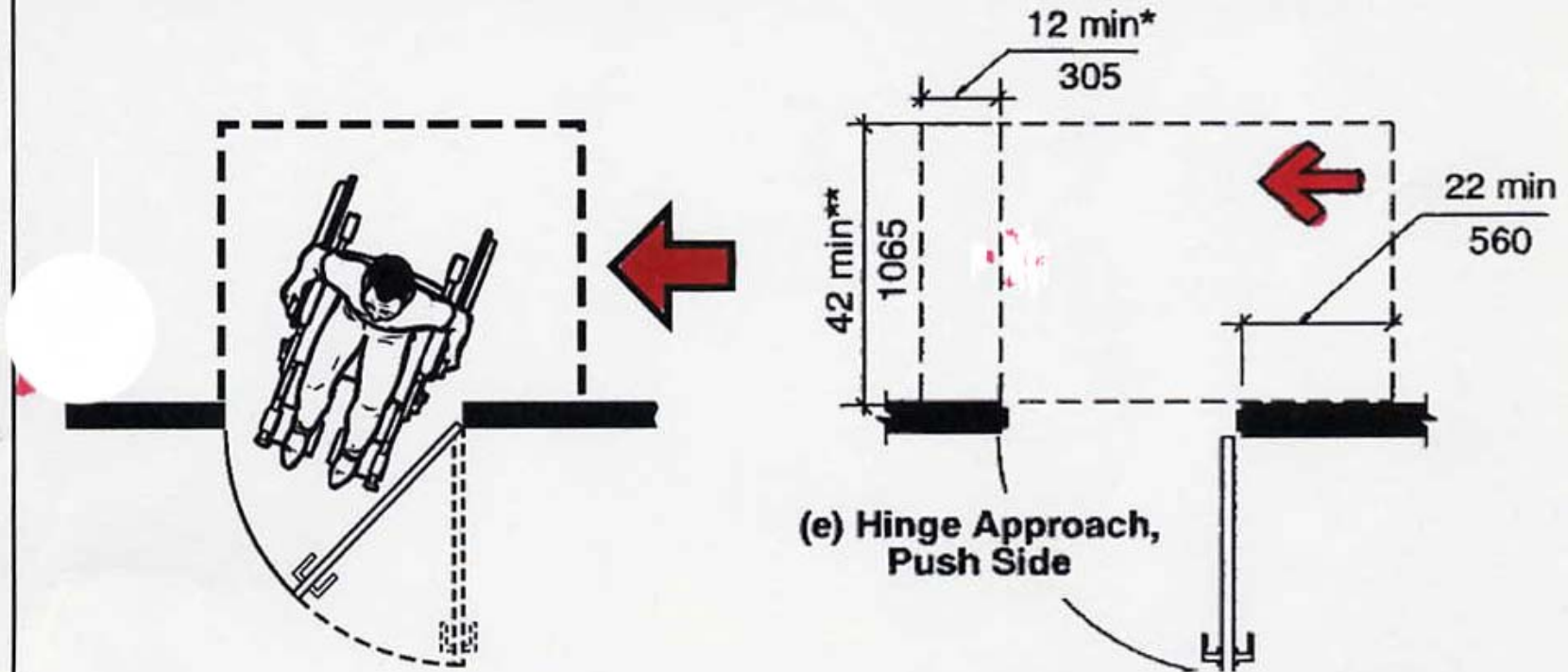
Door and Doorway (A117.1 Section 404)



*If both closer and latch are provided



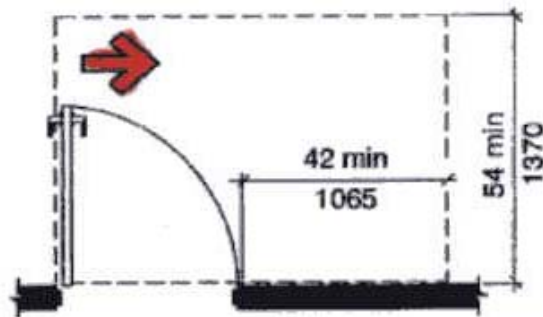
Door and Doorway (A117.1 Section 404)



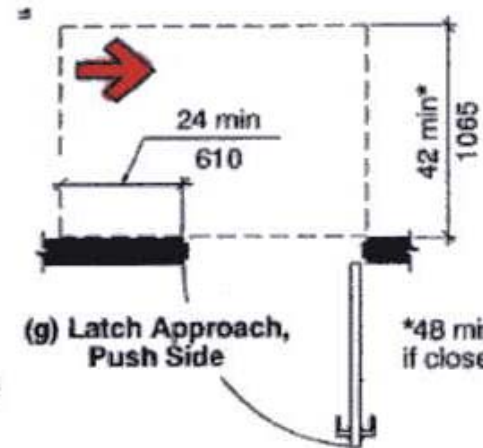
* If both closer and latch are provided

** 48 min (1220) if both closed and latch provided

Door and Doorway (A117.1 Section 404)



(d) Hinge Approach, Pull Side

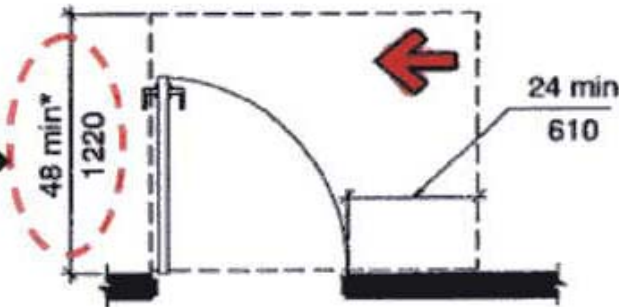


(g) Latch Approach, Push Side

*48 min (1220)
if closer is provided

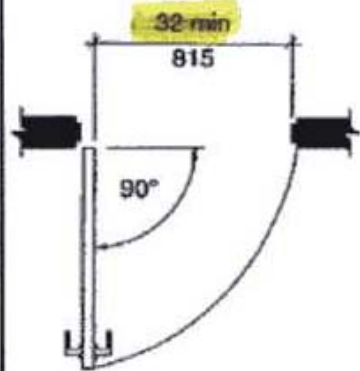
42" allowed in R-2
Type B Units
54" req'd if closer is
provided

*54 min (1370) if closer is provided



(f) Latch Approach, Pull Side

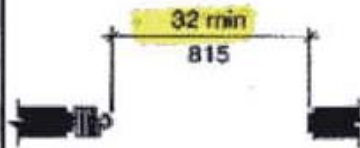
Measuring Door Opening Width



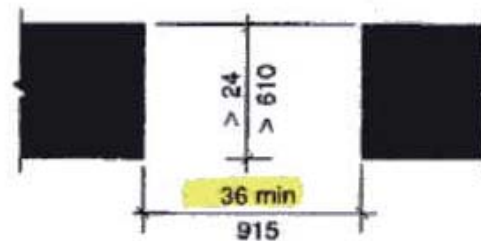
(a) Hinged Door



(b) Sliding Door



(c) Folding Door



(d) Doorways without Doors

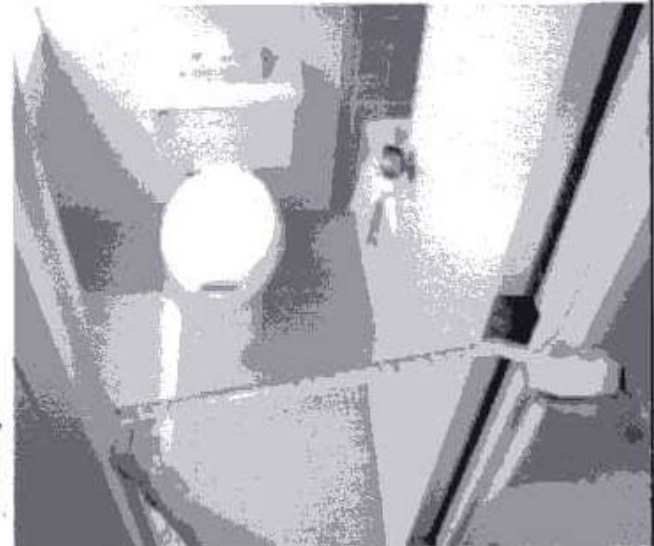
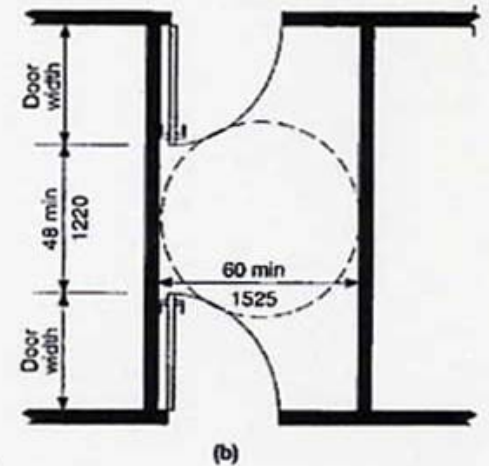
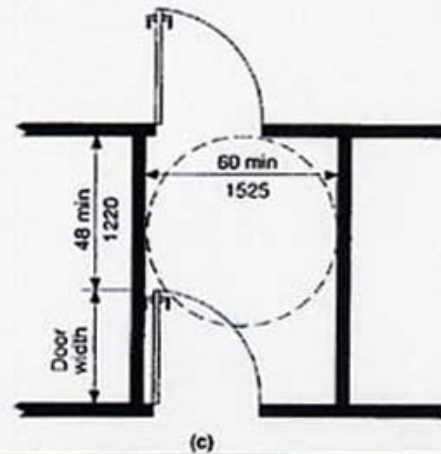
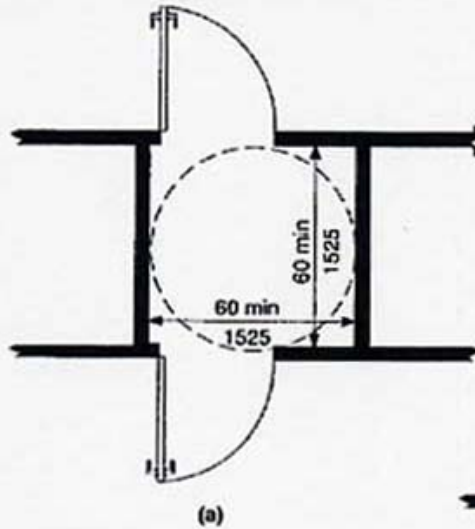


Fig. 404.2.2
Clear Width of Doorways

Door and Doorway (A117.1 Section 404)

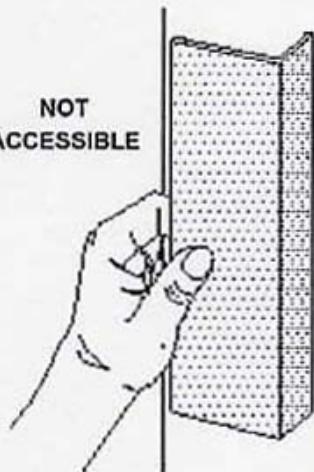


Inadequate Space in Vestibule



Door and Doorway (A117.1 Section 404)

NOT
ACCESSIBLE



This panel-type handle is not accessible because it requires the user to tightly grasp the handle to pull the door open.

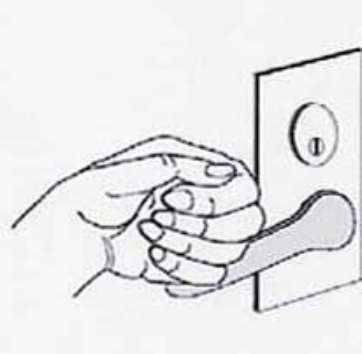
X

NOT
ACCESSIBLE



This handle with a thumb latch is not accessible because one must grasp the handle and pinch down on the thumb latch at the same time.

X



A lever handle is accessible because it can be operated without tight grasping, pinching or twisting.

✓



A loop-type handle is also accessible because it can be used without grasping, pinching or twisting.

✓

Accessible Route (A117.1 Section 403)

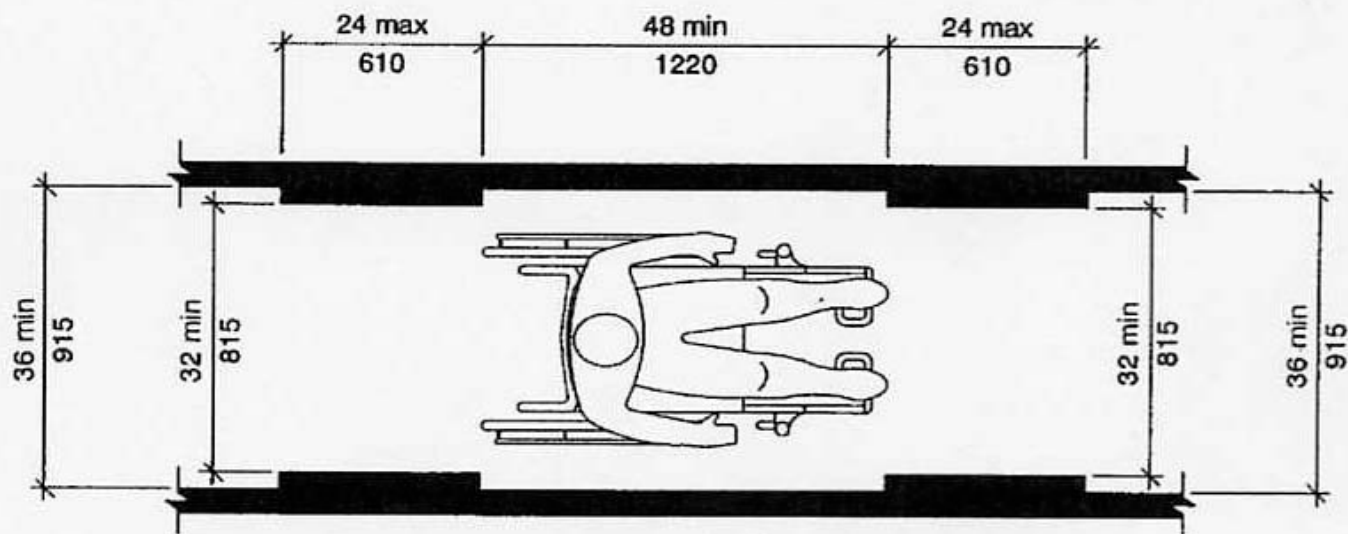


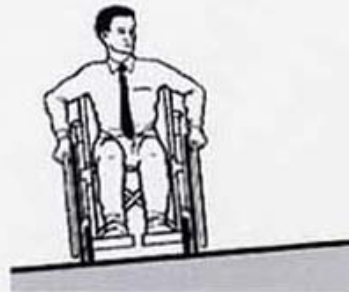
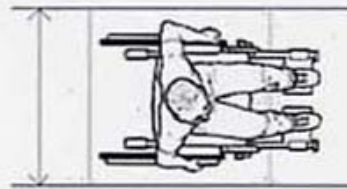
Fig. 403.5
Clear Width of an Accessible Route

Ramp Slope and Width (A117.1 Section 405.2, 405.3 and 405.5)

Slope: Max. 1:12

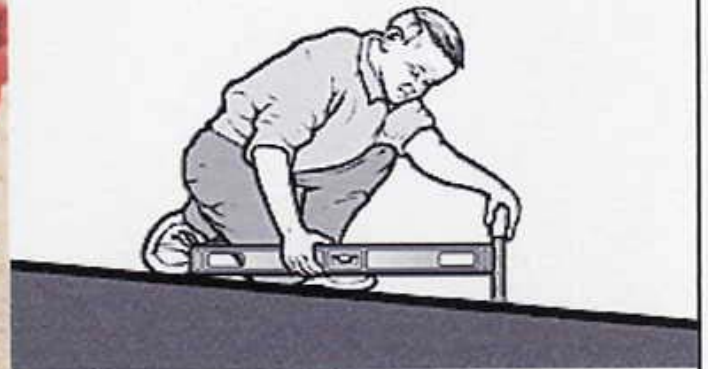
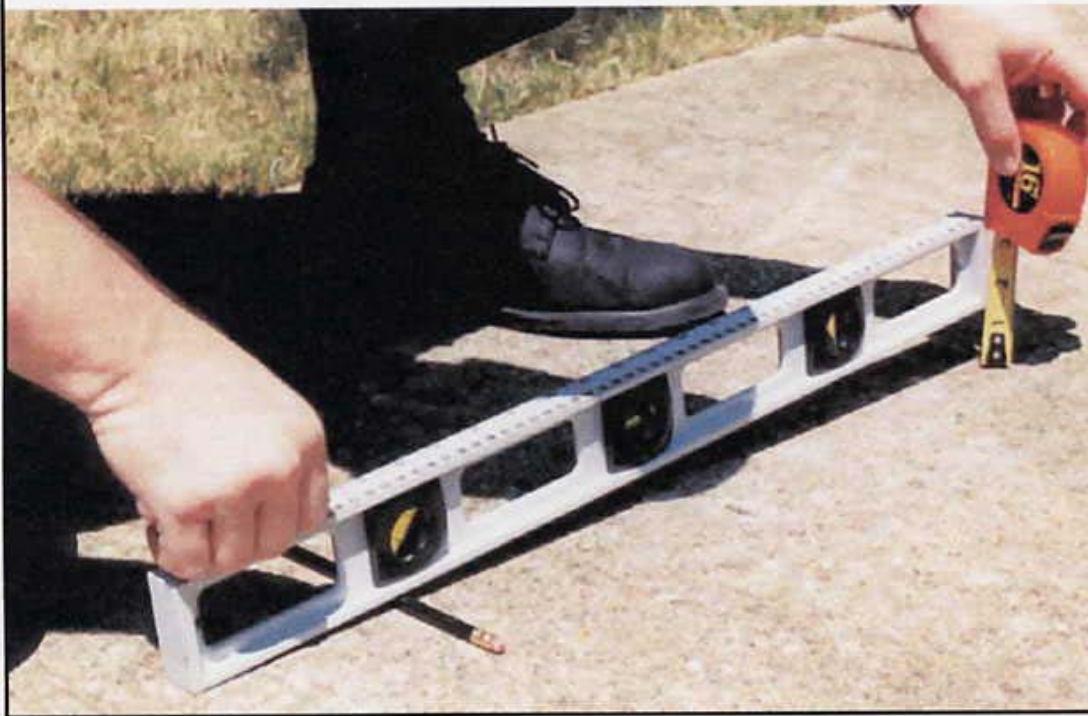
Cross Slope: Max. 1:48

Clear Width: Min. 36"
between handrails





Measuring Ramp Slope

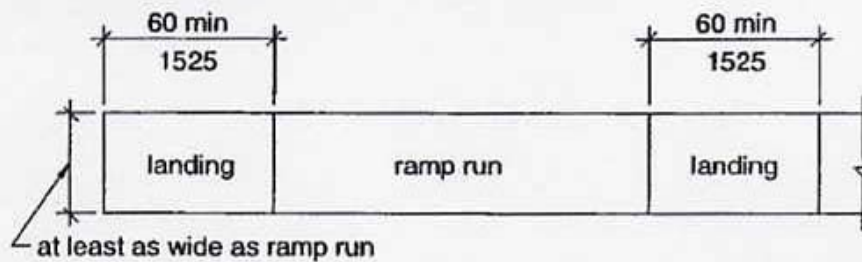


For a 24" long builders' level...

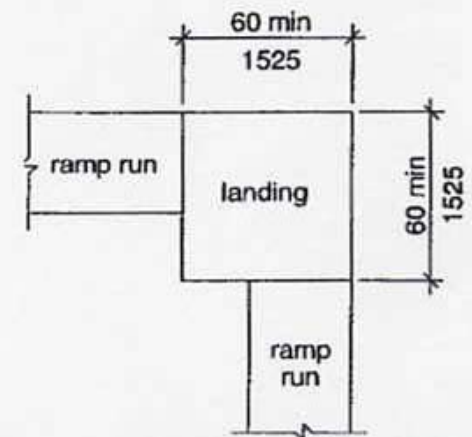
1/2"	critical dimension •	1:50 slope
1 1/4"	critical dimension •	1:20 slope
	(approximate)	
2"	critical dimension •	1:12 slope

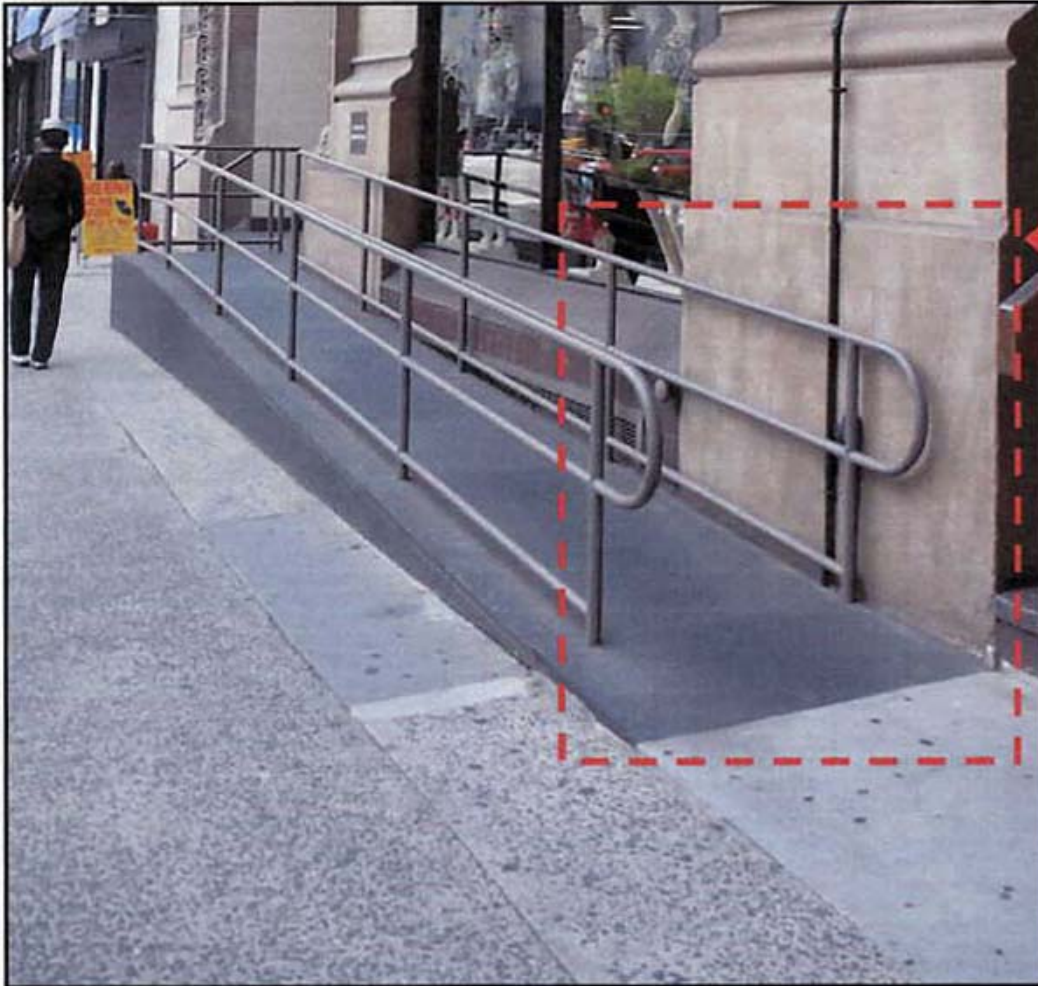


Ramp Landings (A117.1 Section 405.7)



(a)





Handrails (A117.1 Section 505)

NOT ACCESSIBLE

505.10.1 Top and Bottom Extension at Ramps. Ramp handrails shall extend horizontally above the landing 12 inches (305 mm) minimum beyond the top and bottom of ramp runs. Extensions shall return to a wall, guard, or floor, or shall be continuous to the handrail of an adjacent ramp run.

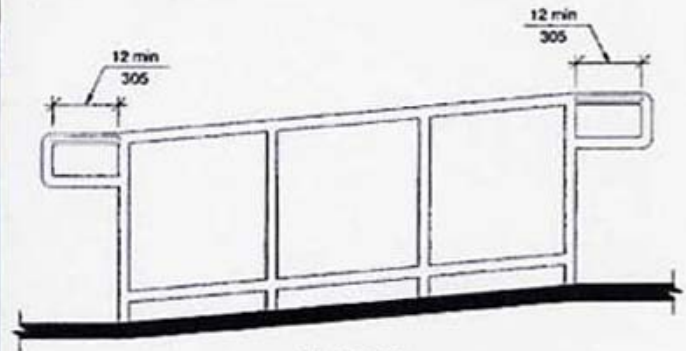


Fig. 505.10.1
Top and Bottom Handrail Extensions at Ramps

Handrails (Section BC 1009.11 and A117.1 Section 505)

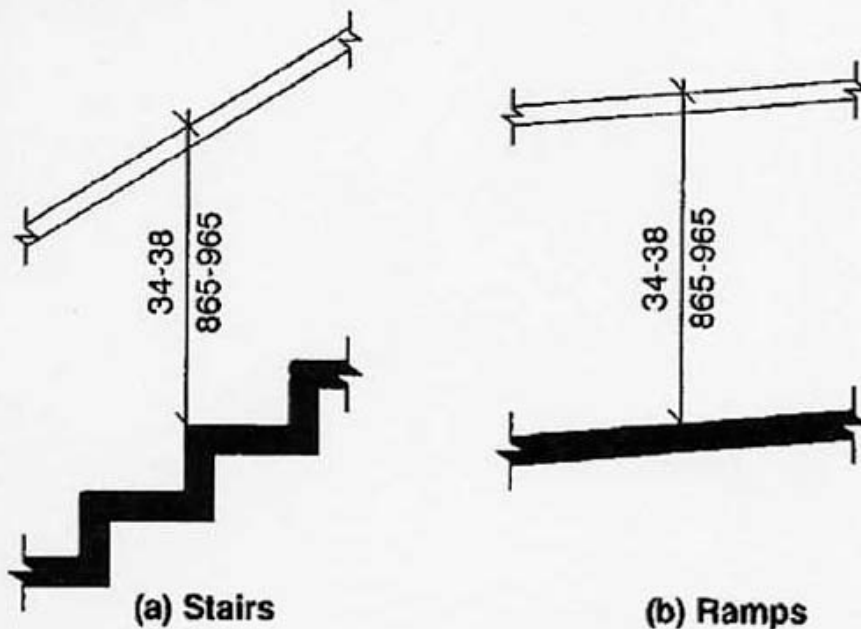


Fig. 505.4
Handrail Height

Ramps with a rise greater than 6" must have handrails on both sides

Handrails (A117.1 Section 505)

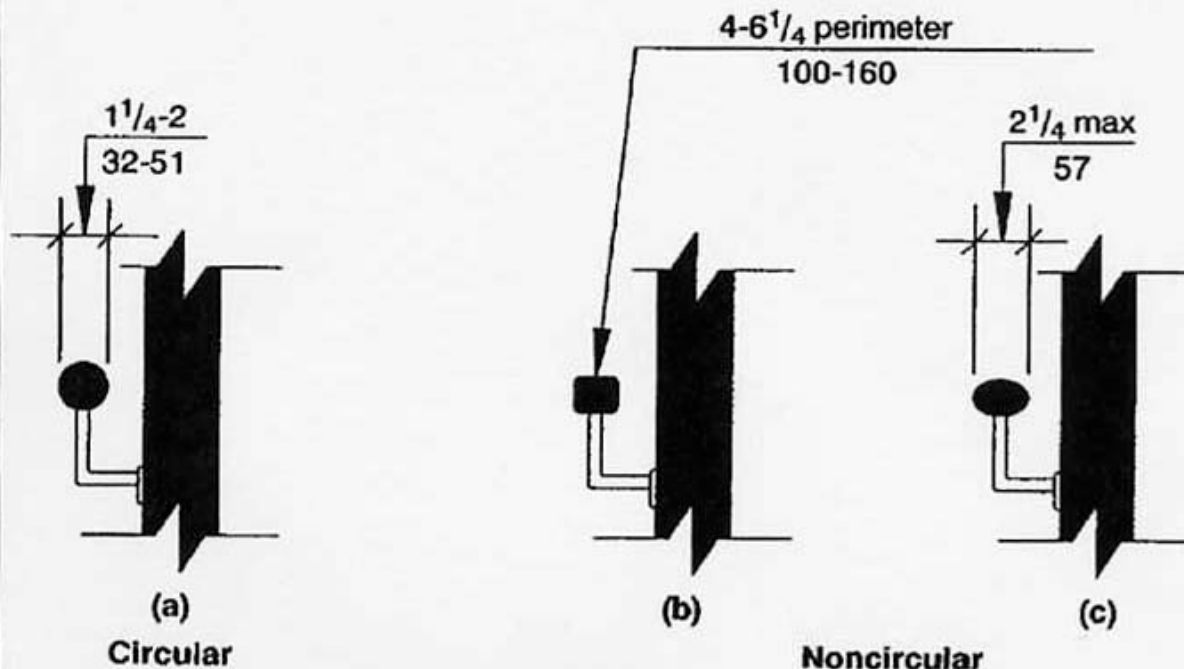


Fig. 505.7
Handrail Cross Section

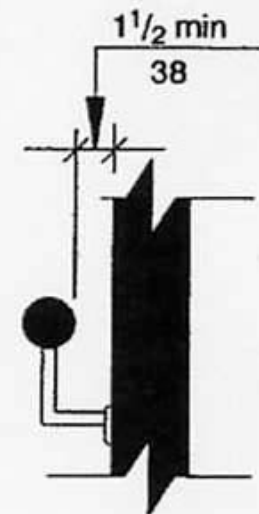


Fig. 505.5
Handrail Clearance

Handrails (A117.1 Section 505)

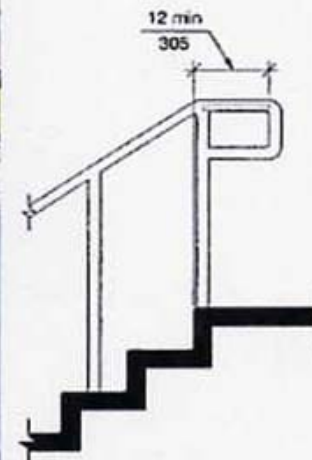
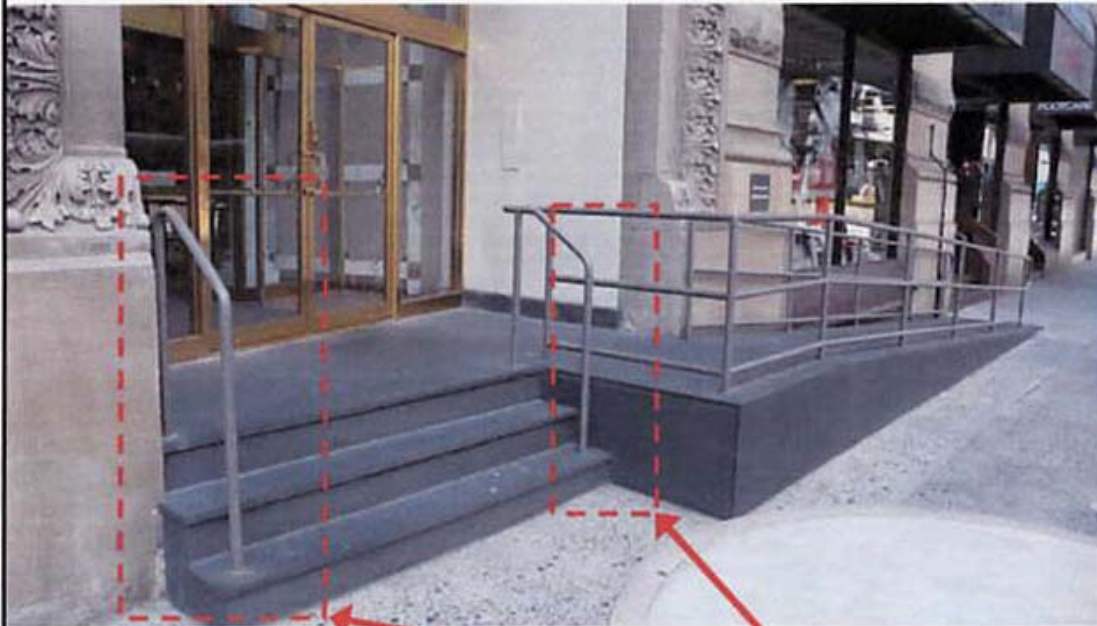


Fig. 505.10.2
Top Handrail Extensions at Stairs

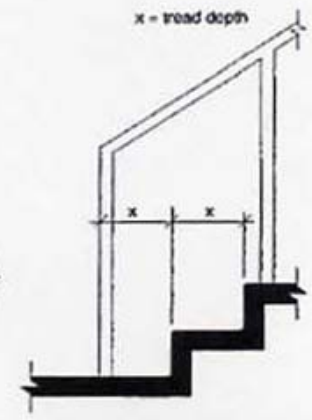


Fig. 505.10.3
Bottom Handrail Extensions at Stairs

NOT ACCESSIBLE

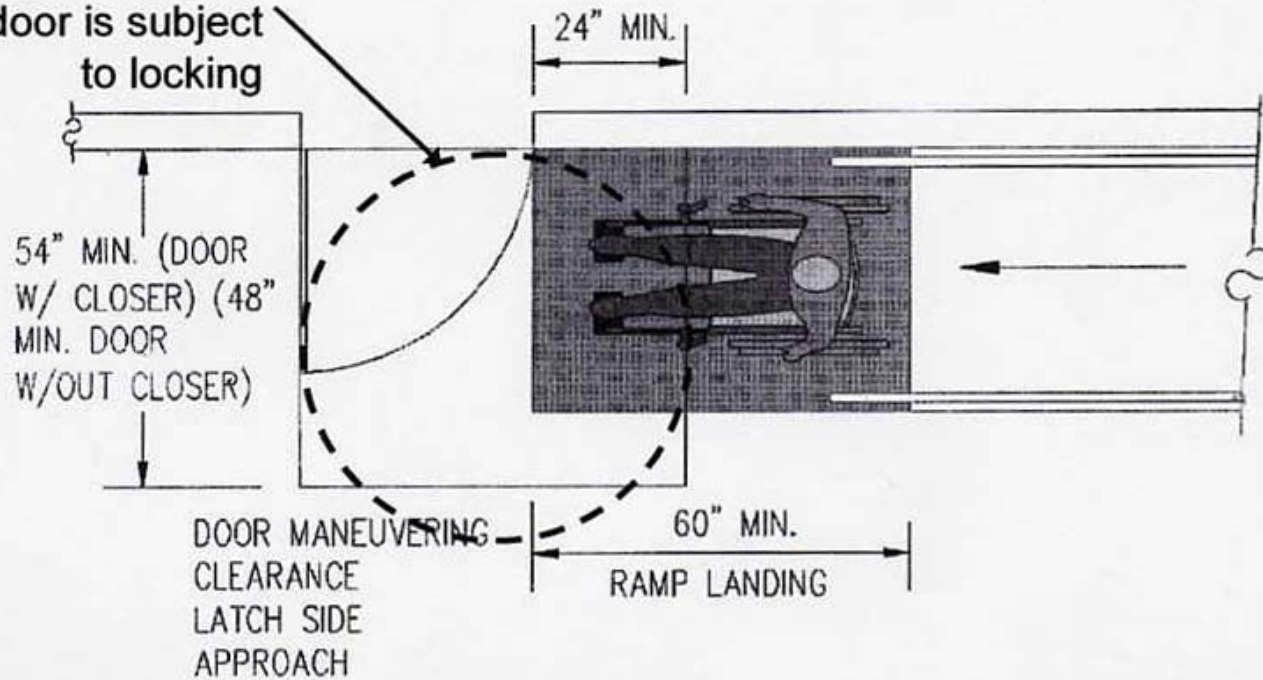
505.8 Surfaces. Handrails, and any wall or other surfaces adjacent to them, shall be free of any sharp or abrasive elements. Edges shall be rounded.



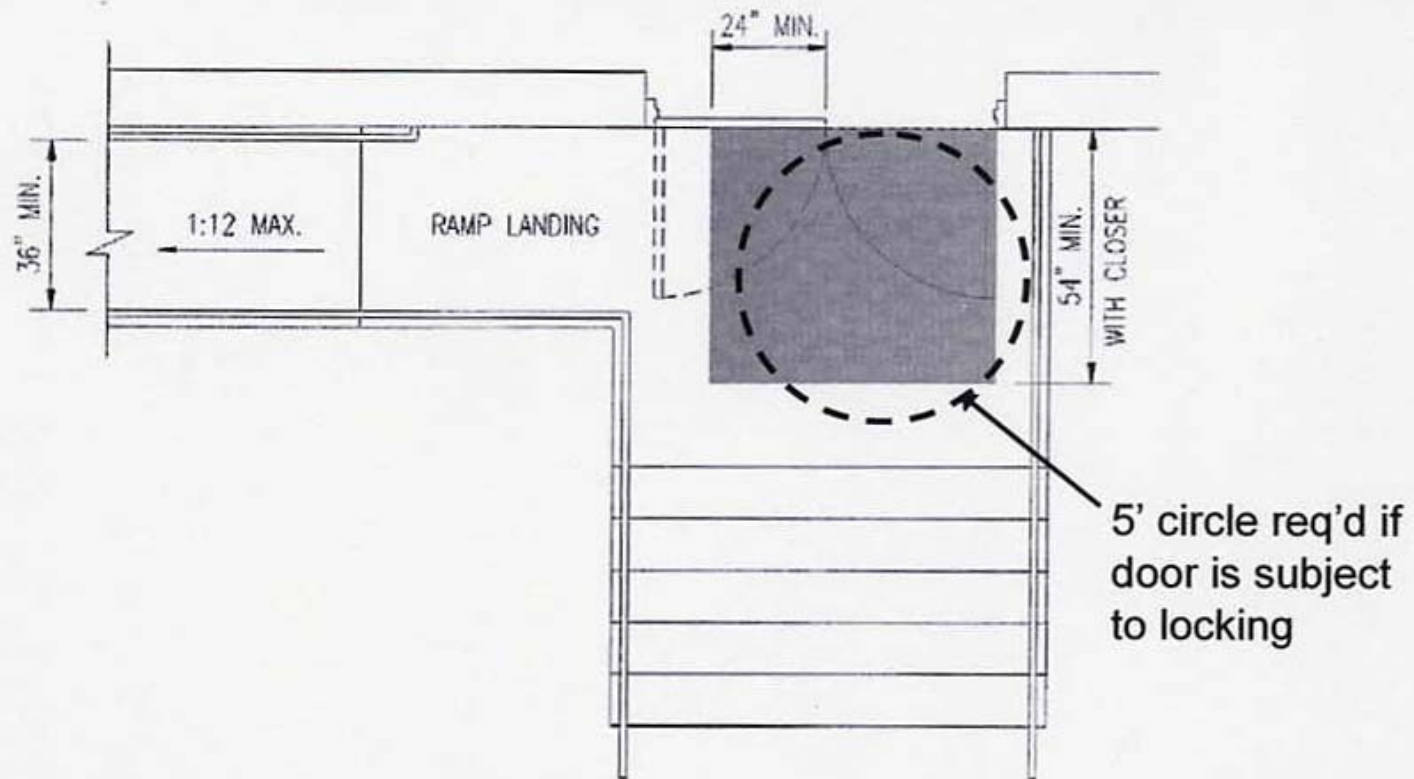
Handrails (A117.1 Section 505)

Ramp Landing with Doorway (A117.1 Section 404)

5' circle req'd if door is subject to locking



Ramp Landing with Doorway (A117.1 Section 404)



Elevators (A117.1 Section 407)

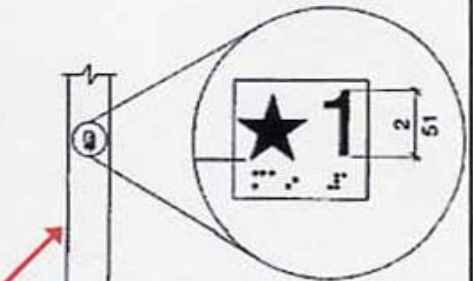
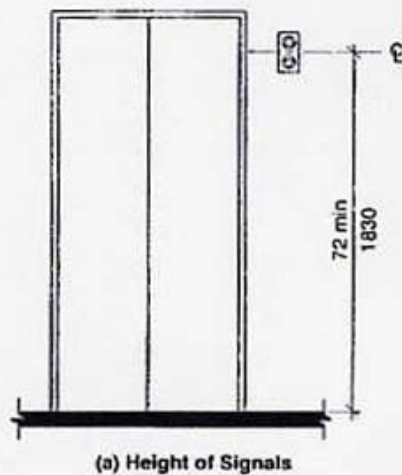


Fig. 407.2.3.1
Floor Designation

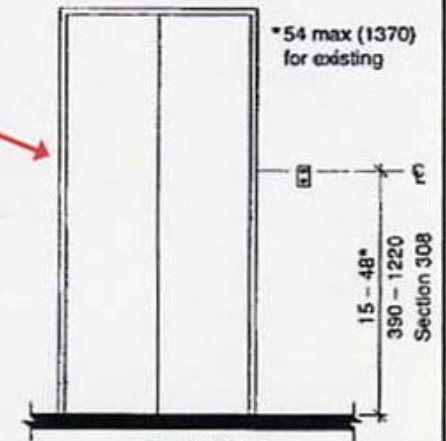
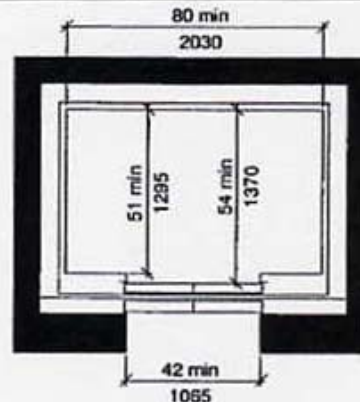


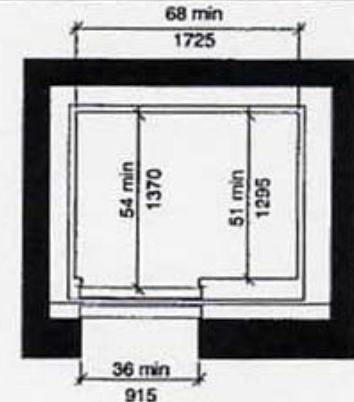
Fig. 407.2.1.1
Height of Elevator Call Buttons

Elevators (A117.1 Section 407)

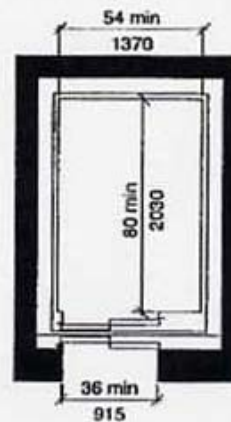
Acceptable inside
dimension of
elevator cars in
buildings less than
5-stories in height



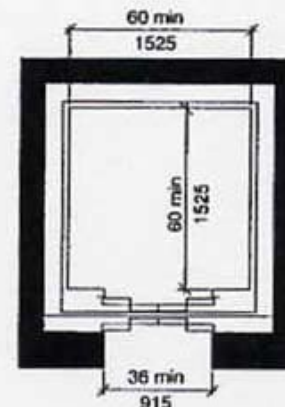
(a) Centered Door Location



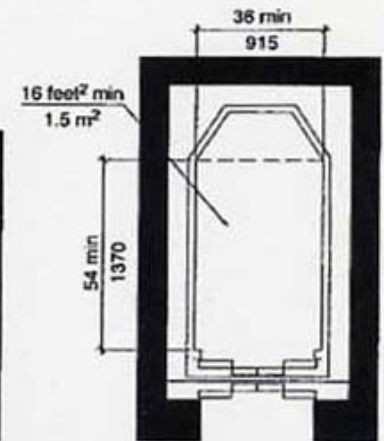
(b) Side (Off-Centered Door) Location



(c) Any Door Location



(d) Any Door Location



(e) Existing Car Configurations

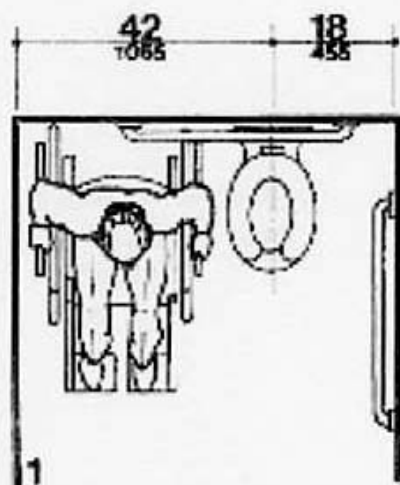


The New NYC Construction Codes.
The Foundation for a Safe, Sustainable NYC.

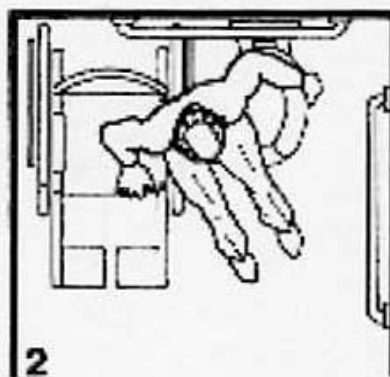
Non- residential plumbing facilities requirements



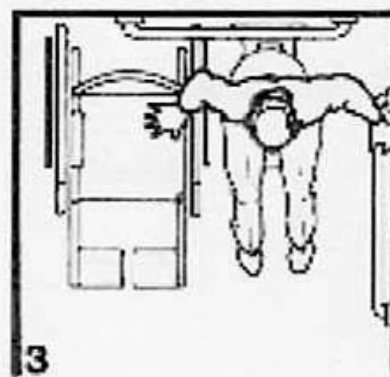
Unisex/Single User Toilet rooms (A117.1 Section 604)



1
Takes transfer position, removes armrest, sets brakes.



2
Transfers.



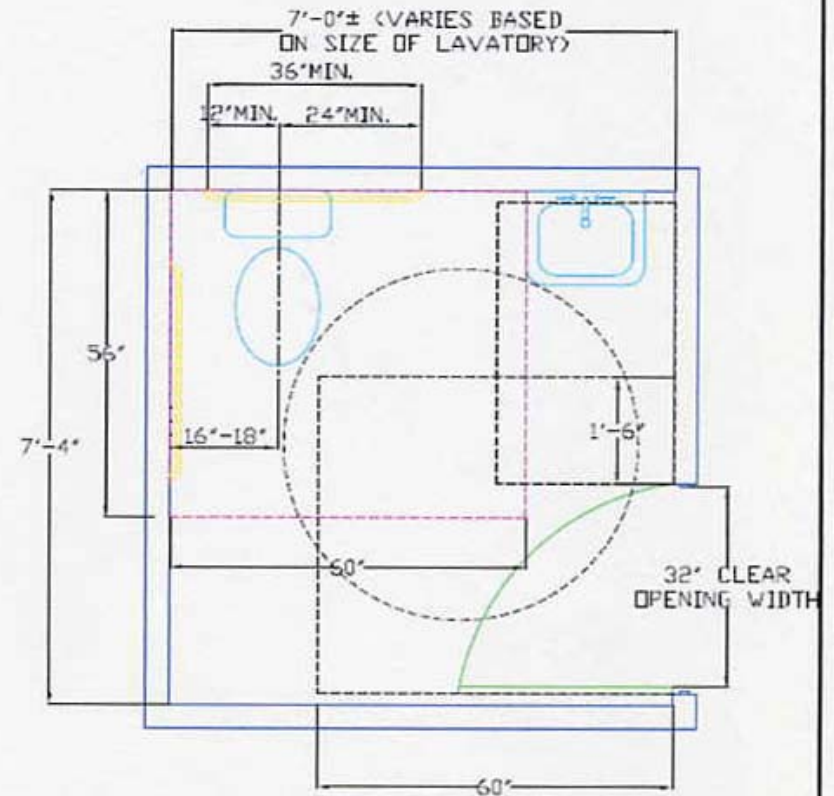
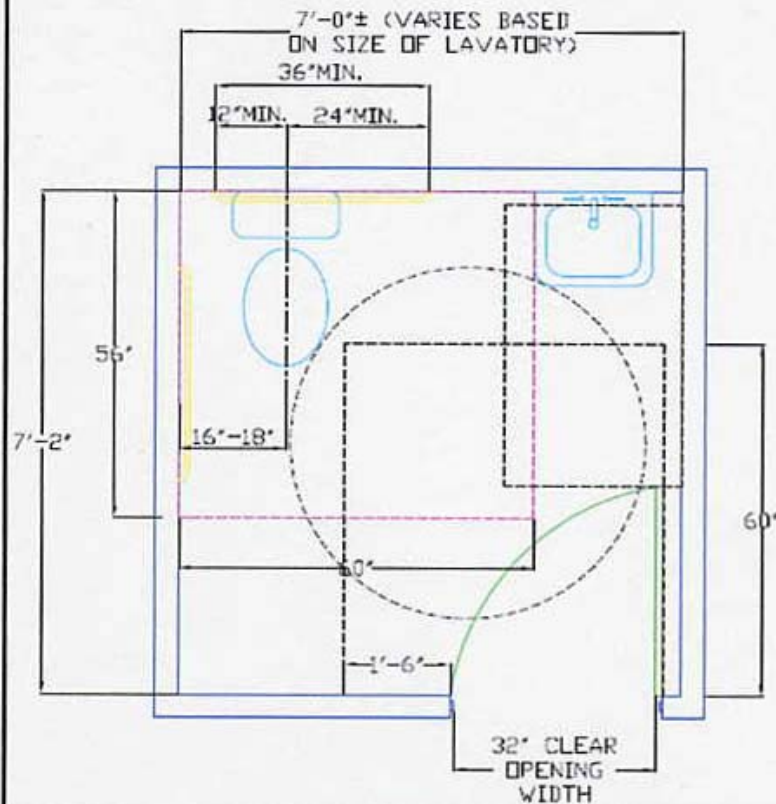
3
Positions on toilet.

Unisex/Single User Toilet rooms (A117.1 Section 604)

Highlight of Key Features:

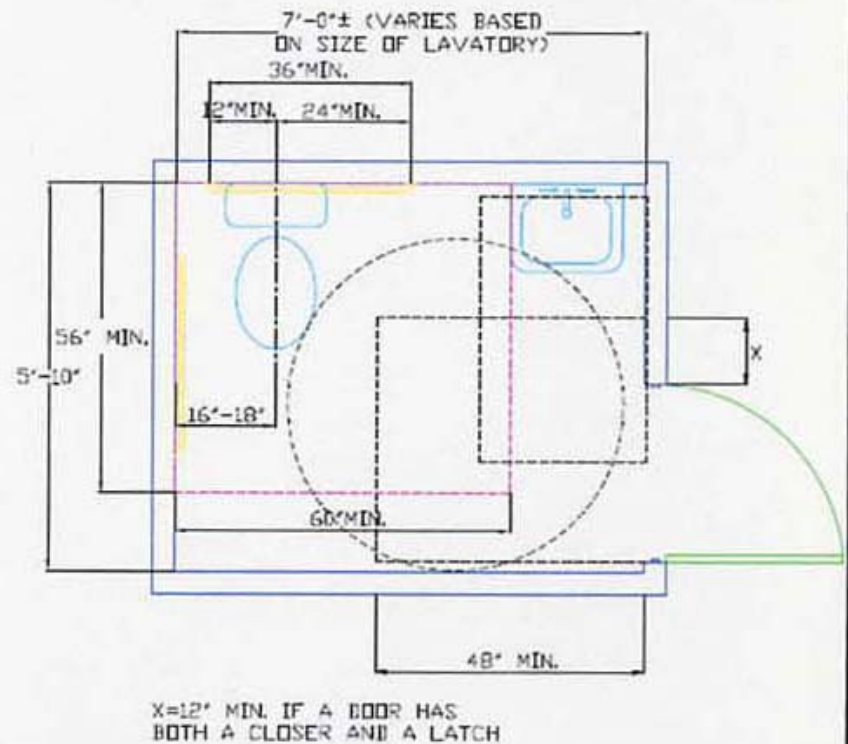
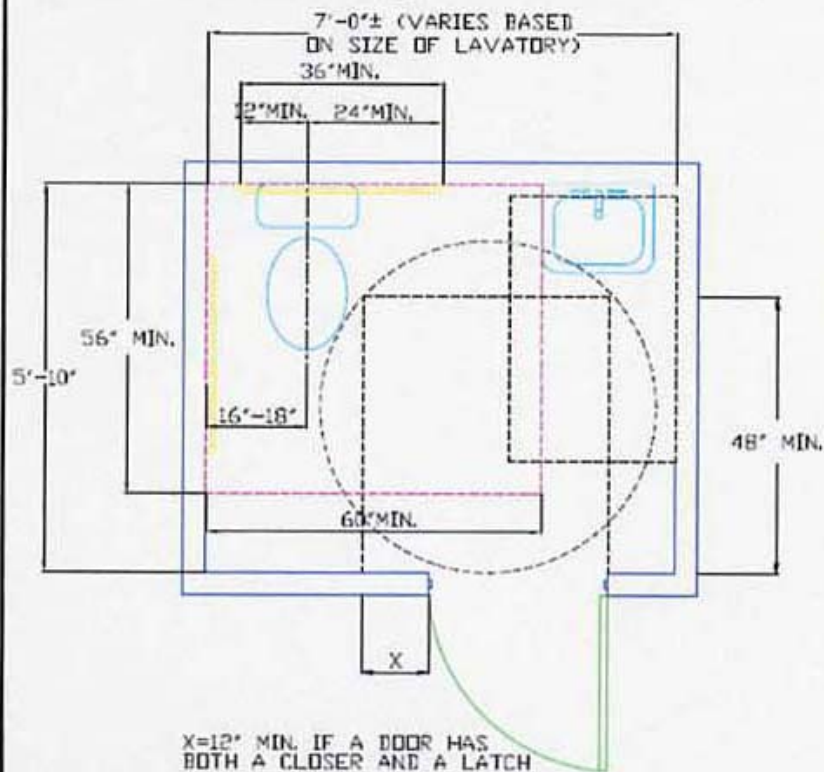
- Door swing cannot overlap clear floor space of any fixtures
- Door swing may overlap turning circle
- Door maneuvering clearances must be provided
- Lavatory cannot overlap clear floor space at the WC

Sample Unisex/Single User Toilet rooms

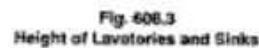
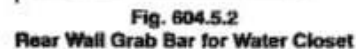
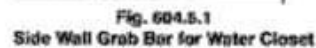
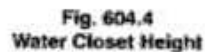


Sample Unisex/Single User Toilet rooms

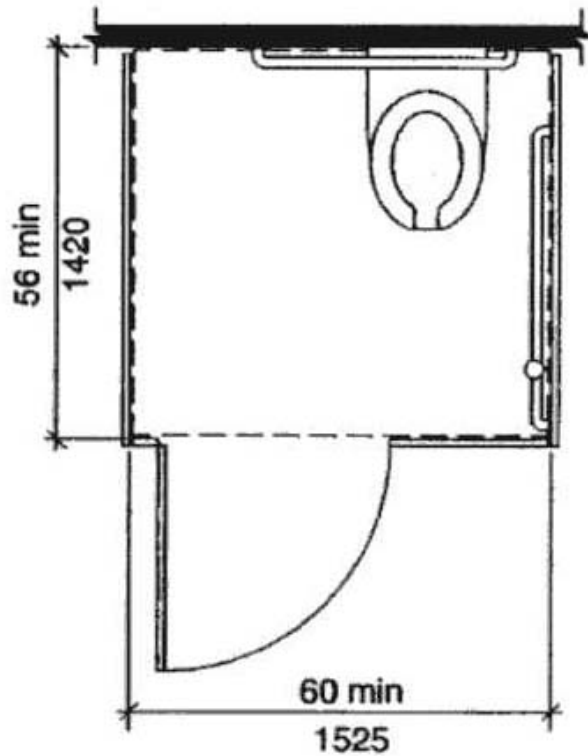
Out-swing door



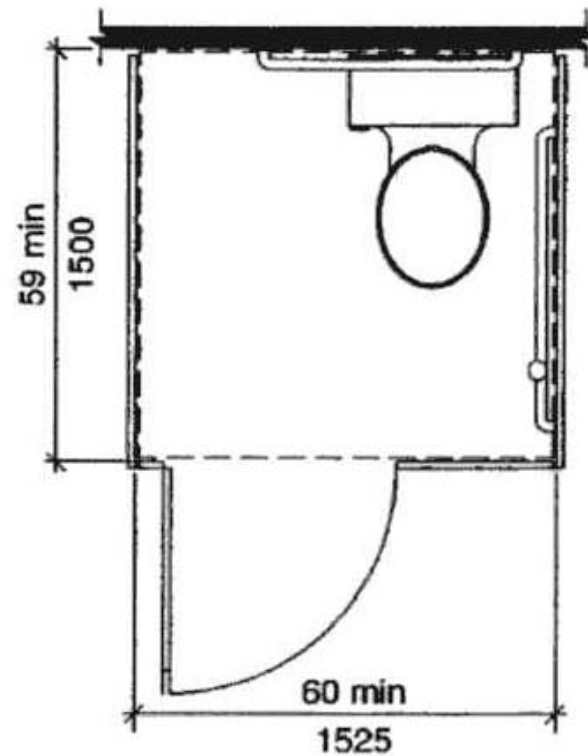
BC p71a



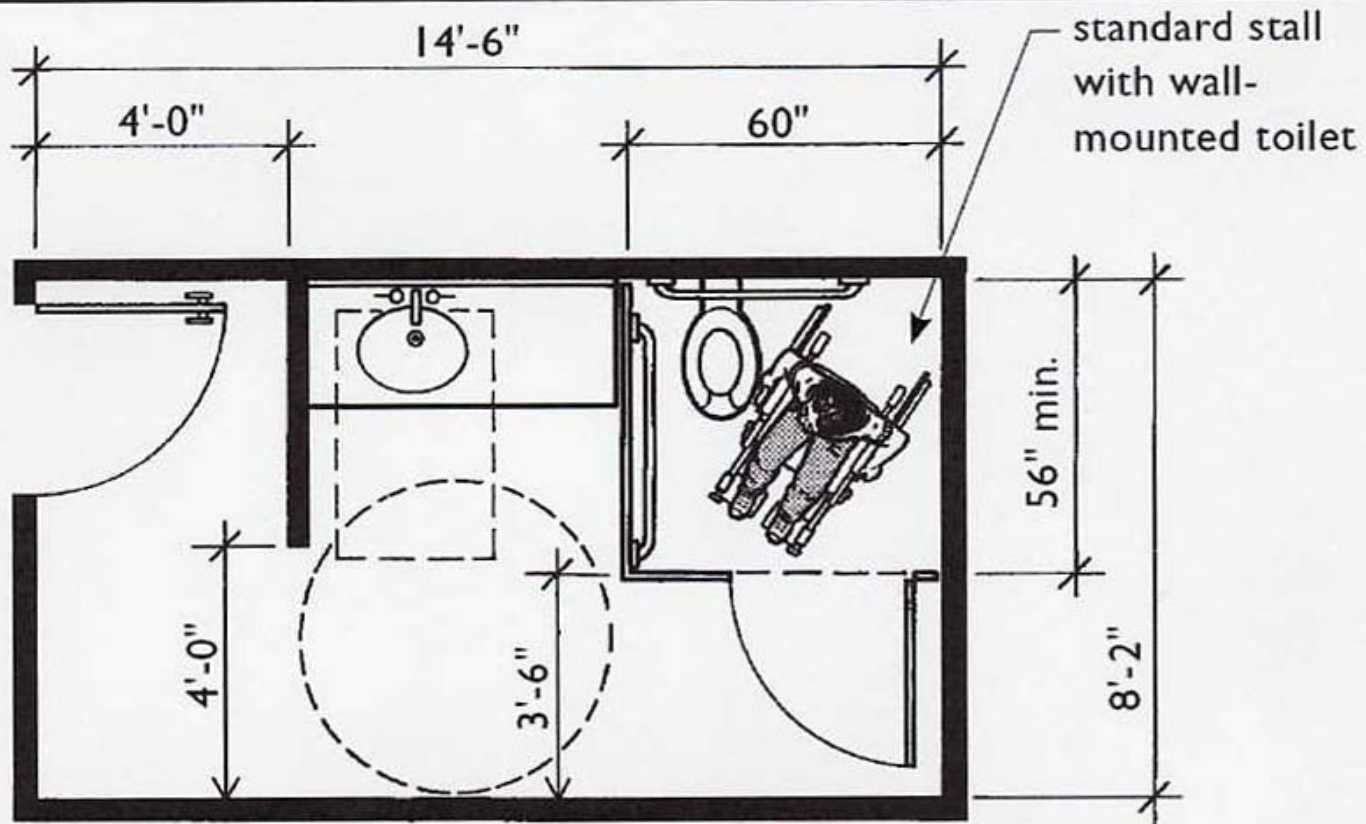
Accessible Toilet Stalls (A117.1 Section 604.8)



(a) Wall-Hung Water Closet – Adult



(b) Floor-Mounted Water Closet – Adult



**Small Toilet Room with Single
Standard Stall**

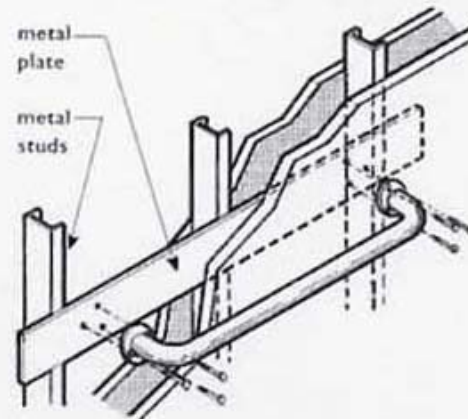
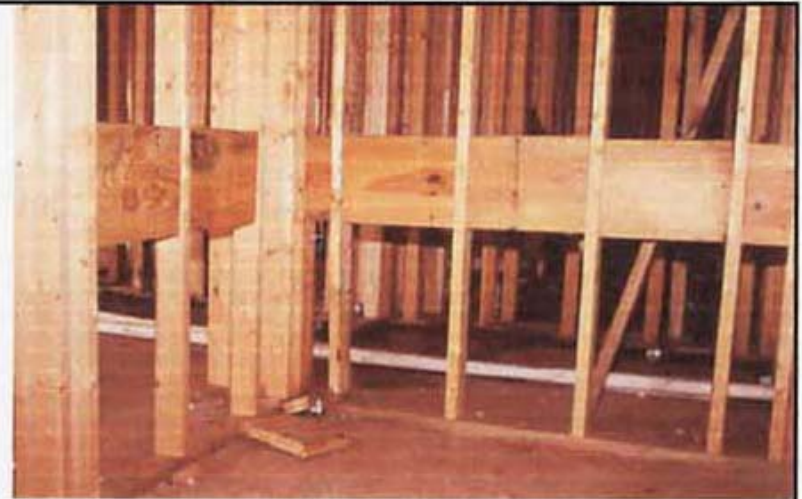
Grab Bar Reinforcement

gypsum board,
cement board,
or other back-up
finish material

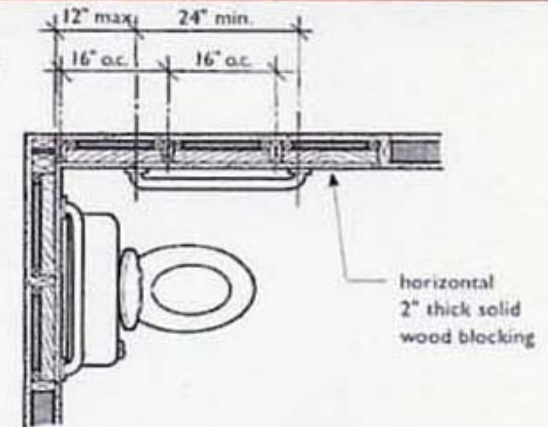
solid wood
blocking over
each designated
area securely
attached to fram-
ing to support
necessary loads

grab bars anchored
through all finish
materials and into
solid blocking

**Solid Wood Reinforcing
on Wood Stud Walls**



Reinforcing at Metal Studs



**Plan View of Extended Horizontal Blocking
Between Conventional Wood Studs**



The New NYC Construction Codes.
The Foundation for a Safe, Sustainable NYC.

Residential Requirements



☒ First bathroom:

[illegible]

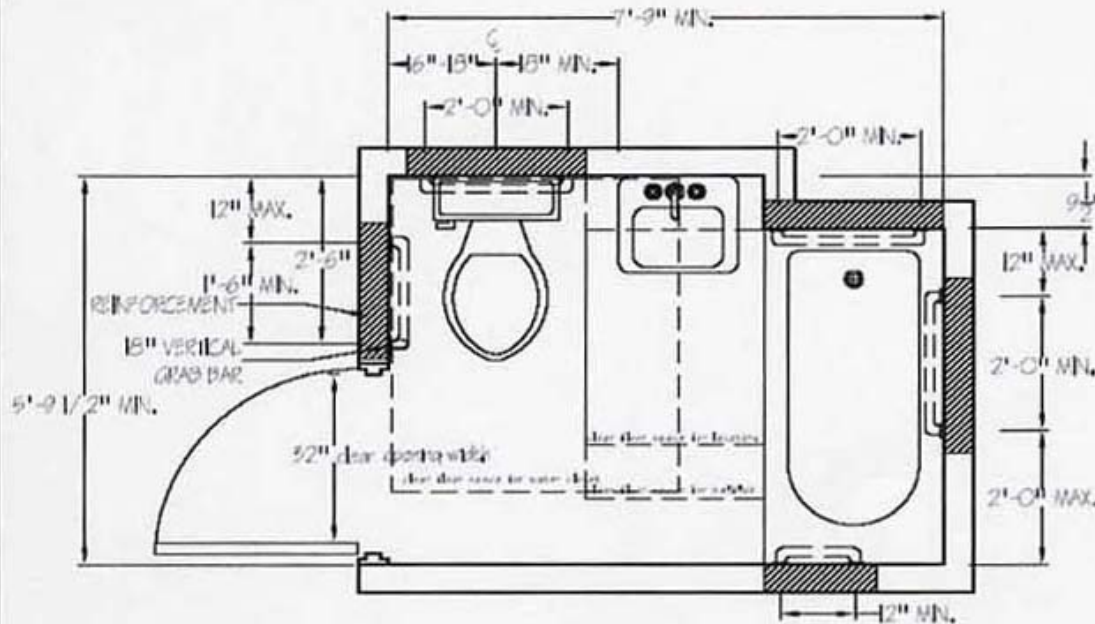
BD p50a

Distinctive Features in Type A Bathrooms

- ☒ Reinforcement for a 42" grab bar adjacent to the WC
- ☒ 5-foot turning space
- ☒ WC must be at the corner
- ☒ Future "reversible" door is not allowed
- ☒ 32" clear door width with maneuvering clearances inside & outside
- ☒ Door may swing in provided it does not overlap a 30"x48" space inside the bathroom
- ☒ Front Approach to lavatory is required (no parallel approach)
- ☒ Parallel approach to tub control is required (no perpendicular appr.)

Sample Appendix P Bathroom

**Appendix P Bathroom
(Unique in NYC)**



APPENDIX P BATHROOM-SIDE APPROACH
42.9 50.FT

