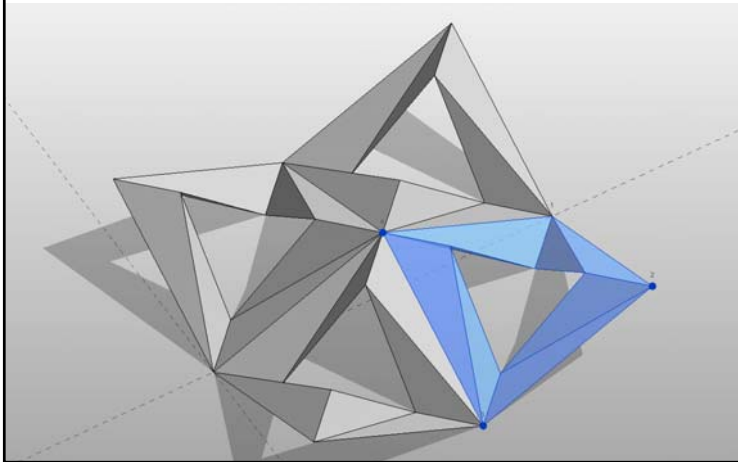
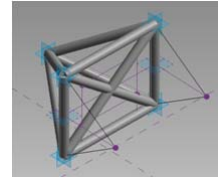


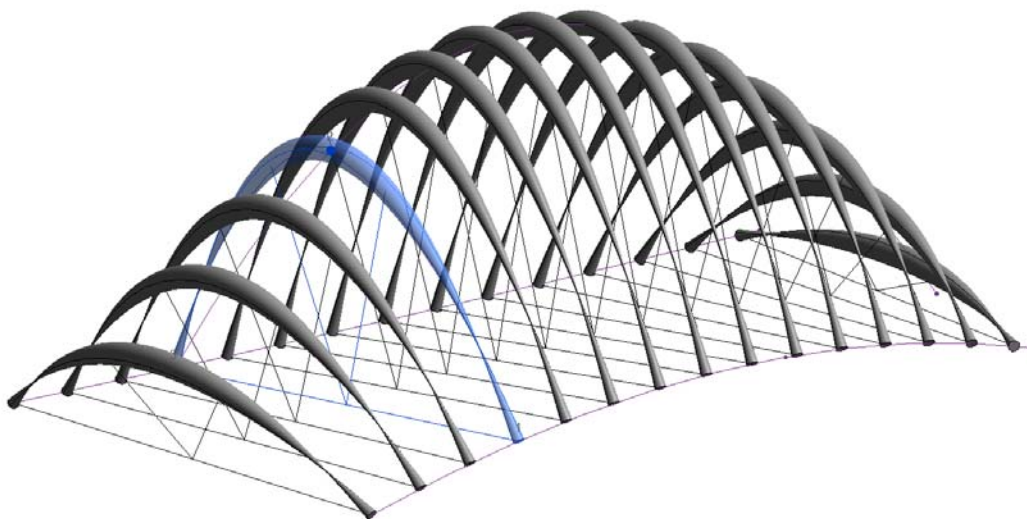
Adaptive Component

An adaptive component is variation on the pattern-based curtain panel. The functionality is designed to be used where a component needs to be flexible and adapt to various unique conditions.

An adaptive component can be a model of a curtain panel, structural member, or other element type.

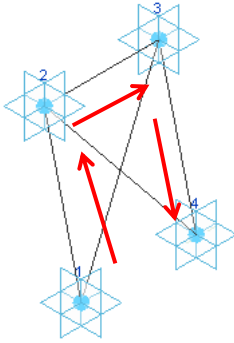


Adaptive Component



Adaptive Component

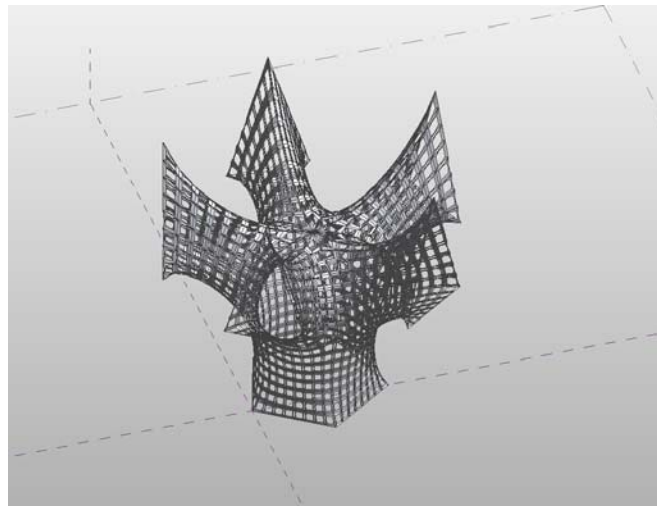
An adaptive component consists of a series of adaptive points which act as the armature from which the entire model is built off of. These points become the placement points for the component. Everything else within the model is built off of these points. Its best to keep these point in order (clockwise or counter-clockwise)



Adaptive Component

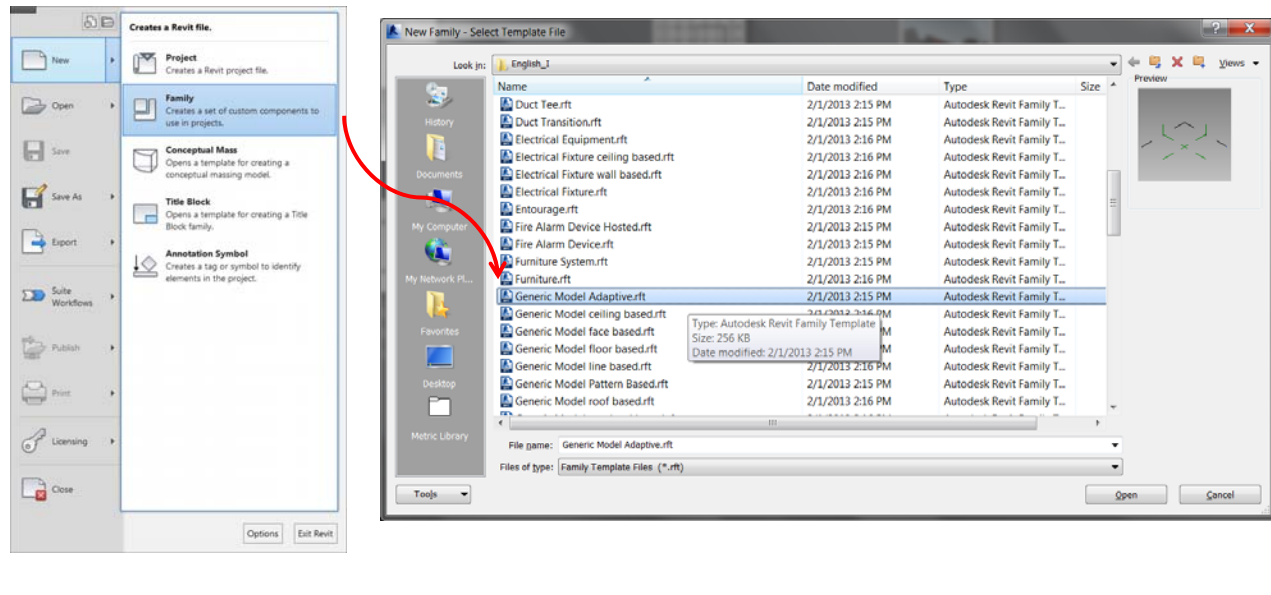
An adaptive component consists of a series of adaptive points which act as the armature from which the entire model is built off of. These points become the placement points for the component. Everything else within the model is built off of these points. Its best to keep these point in order (clockwise or counter-clockwise)

With adaptive components a wide variety of shapes can easily be created.



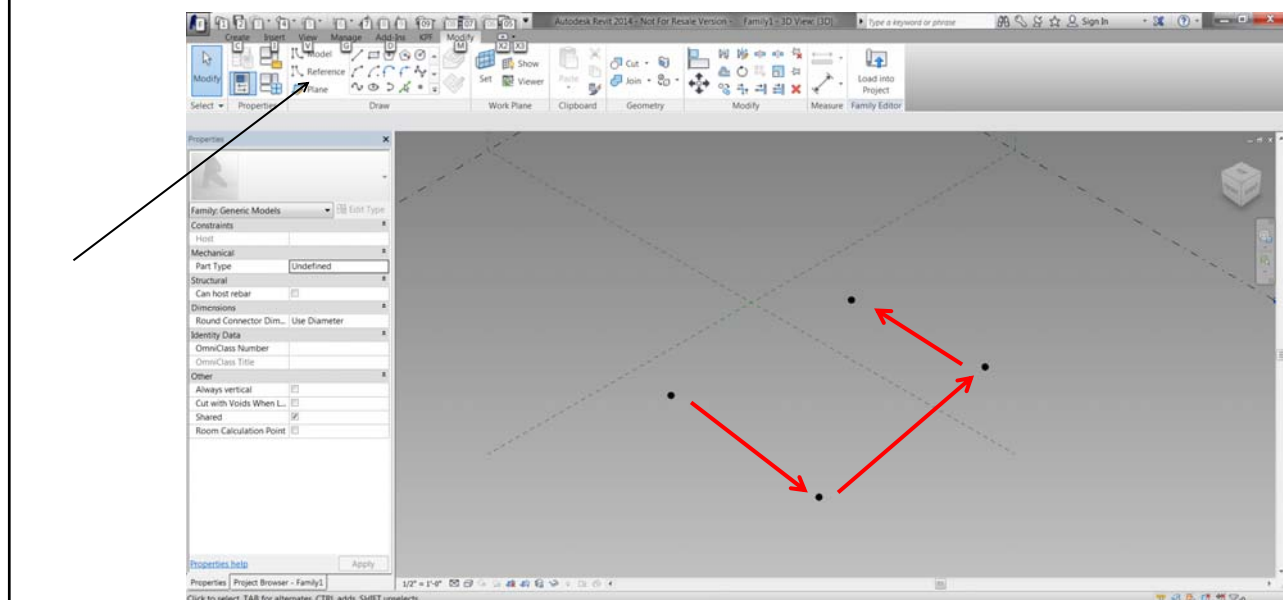
Adaptive Component

To build an adaptive component open a new generic model



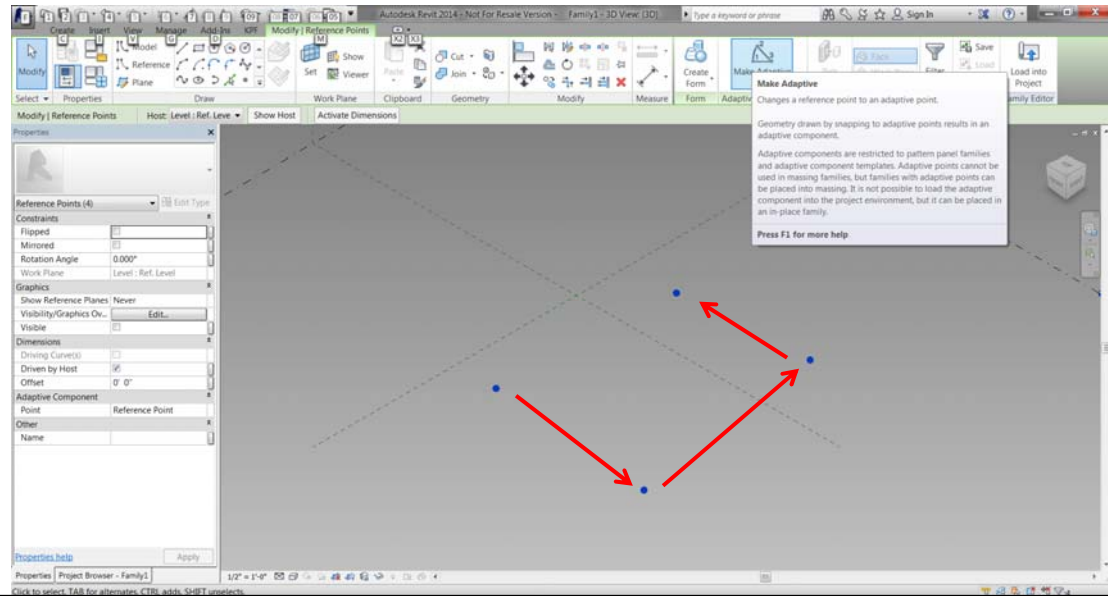
Adaptive Component

In the generic model, place points on the working plane and



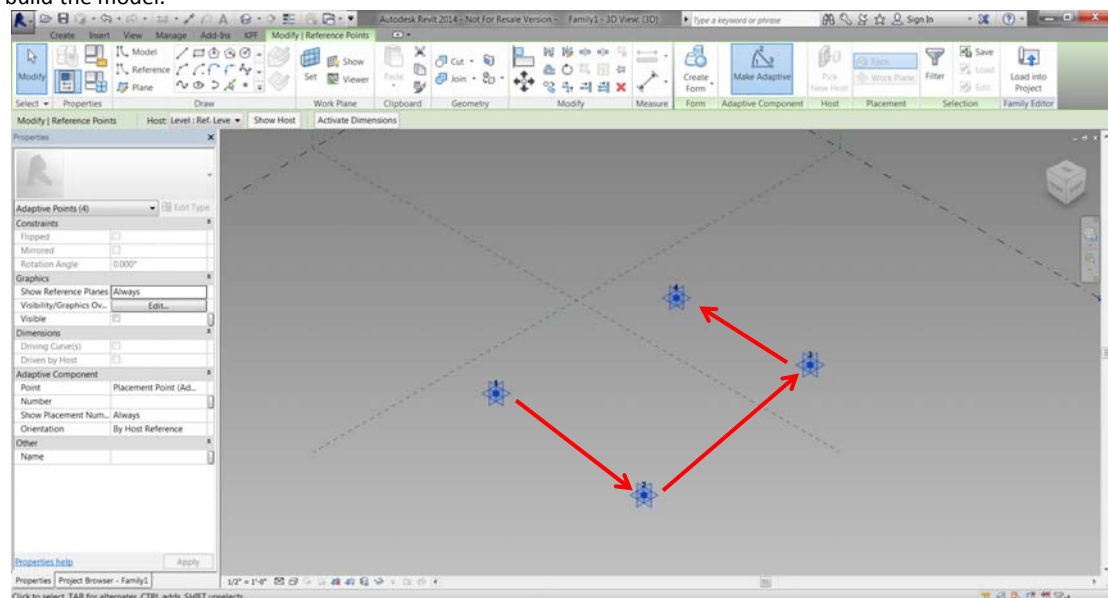
Adaptive Component

Select the points and click on the MAKE ADAPTIVE button



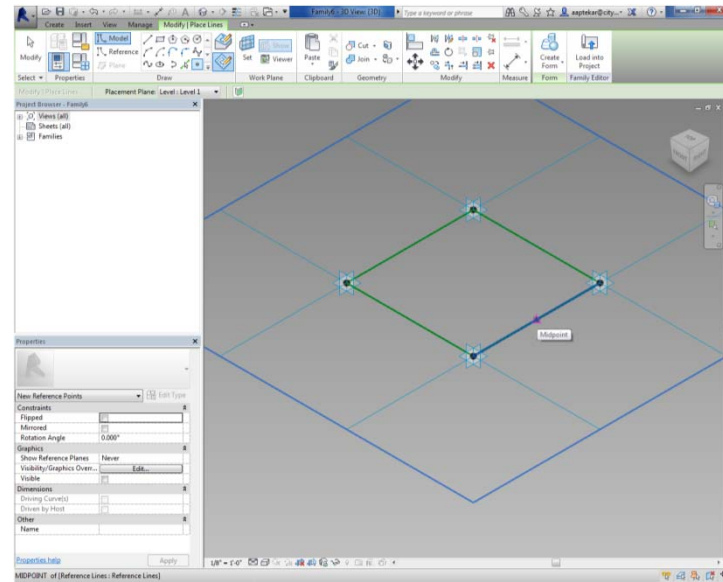
Adaptive Component

The points will be numbered and local planes will be generated. These planes can be used to build the model.



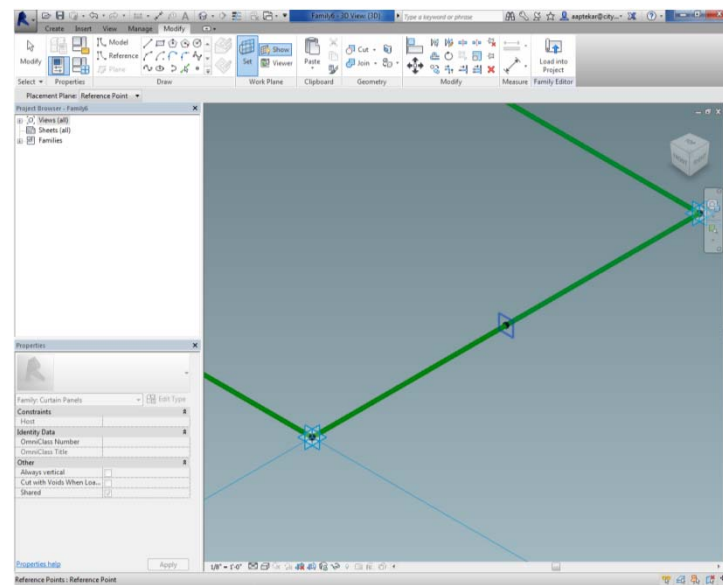
Adaptive Component

???



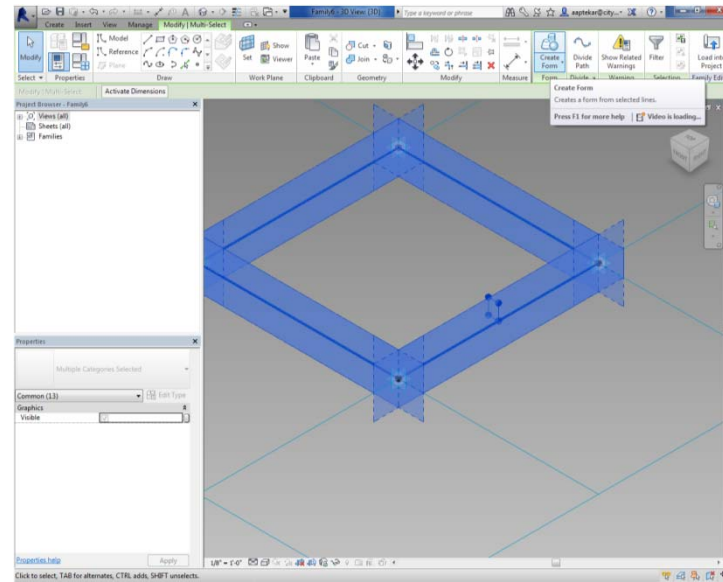
Adaptive Component

???



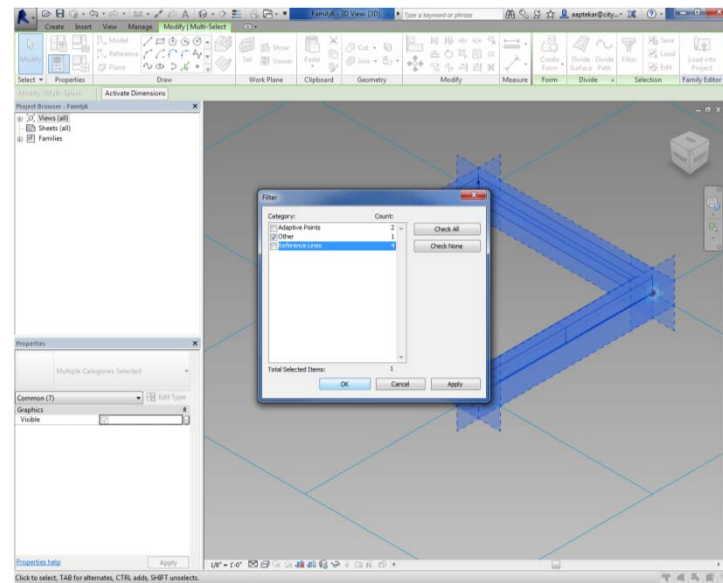
Adaptive Component

???



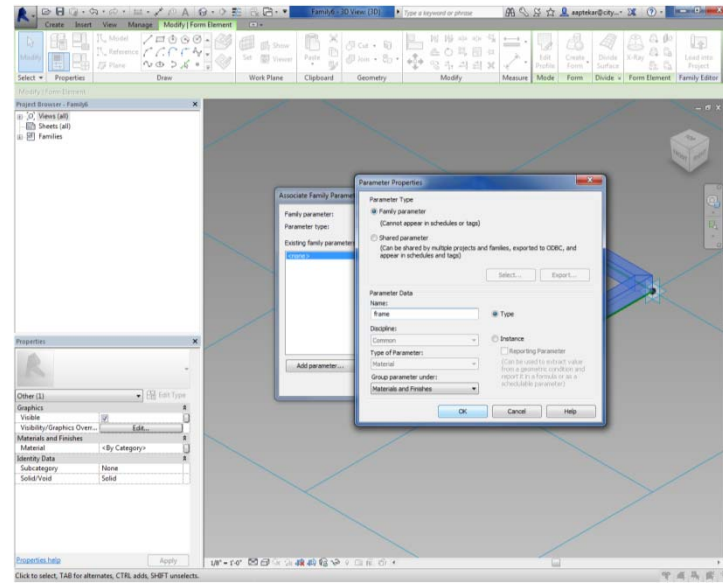
Adaptive Component

???



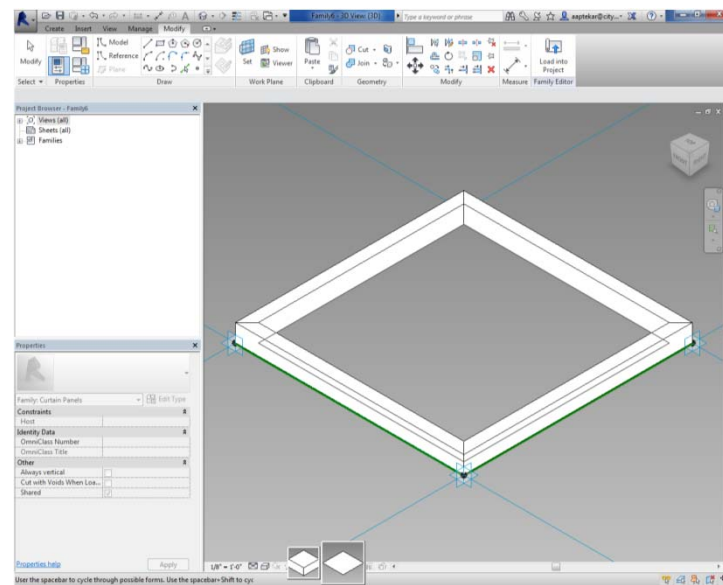
Adaptive Component

???



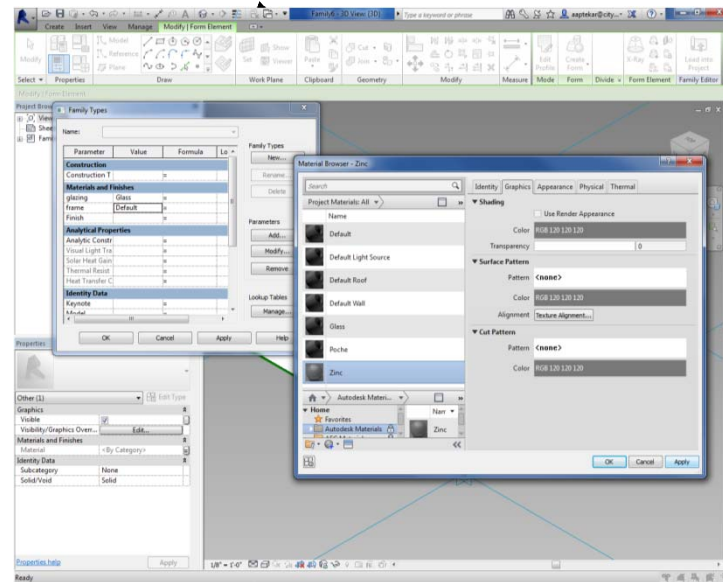
Adaptive Component

???



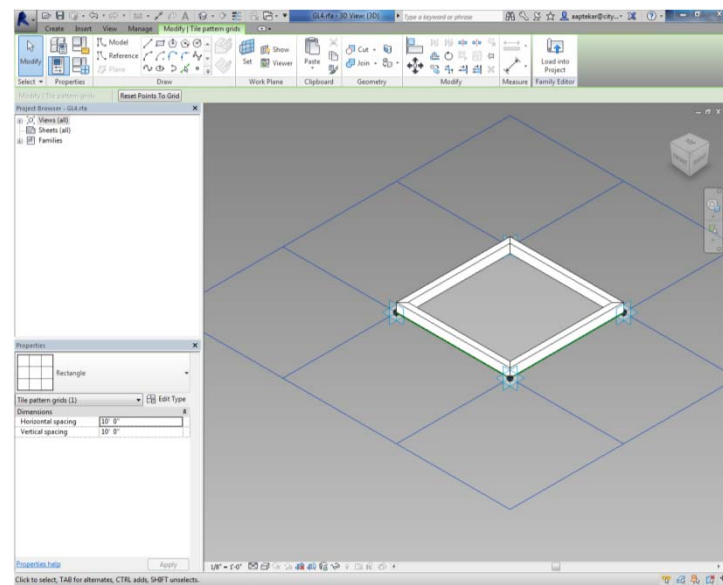
Adaptive Component

???



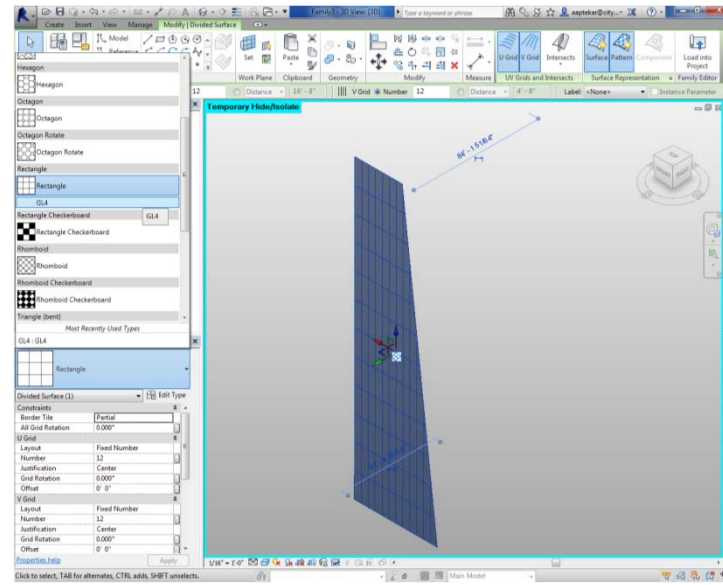
Adaptive Component

???



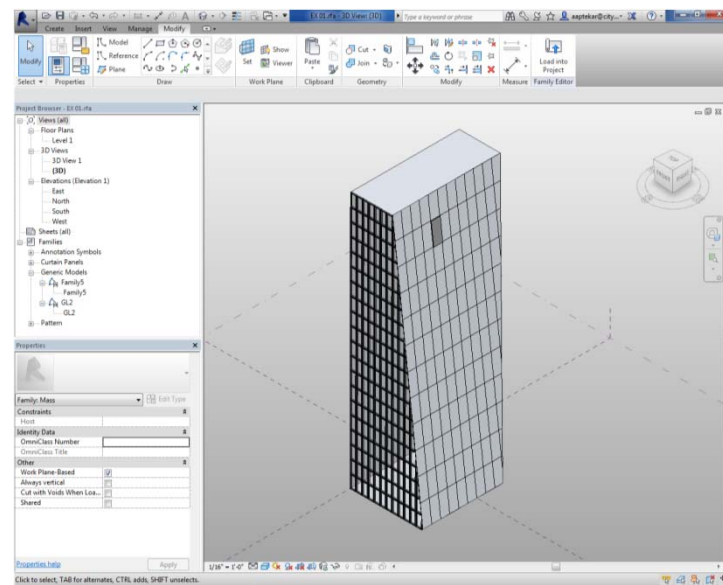
Adaptive Component

???



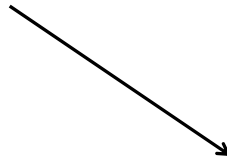
Adaptive Component

???



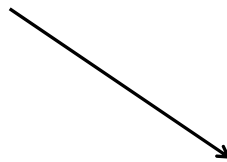
Adaptive Component

???



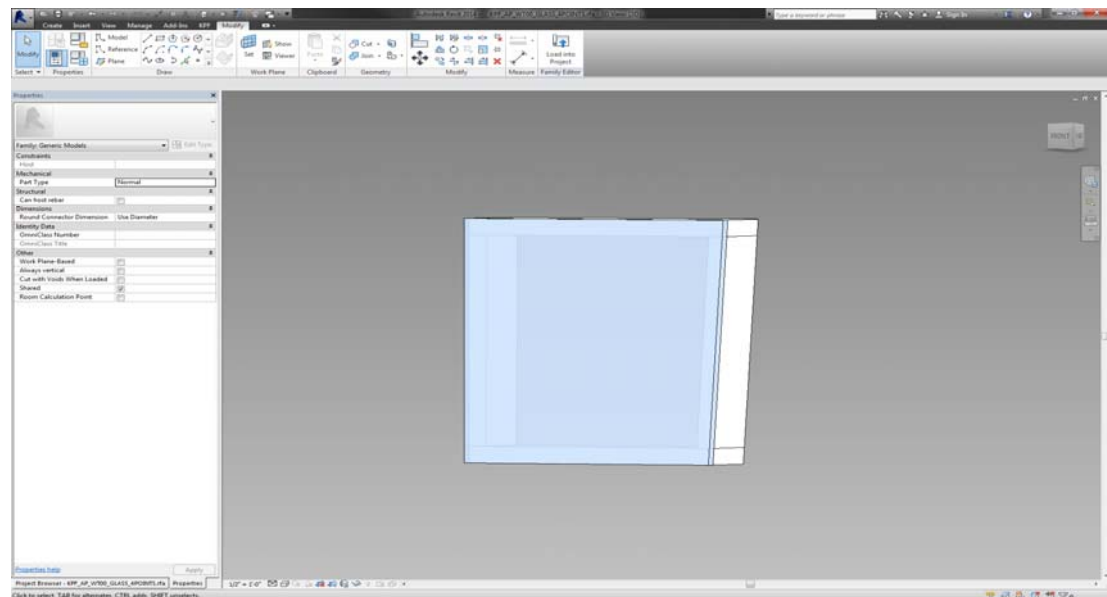
Adaptive Component

???



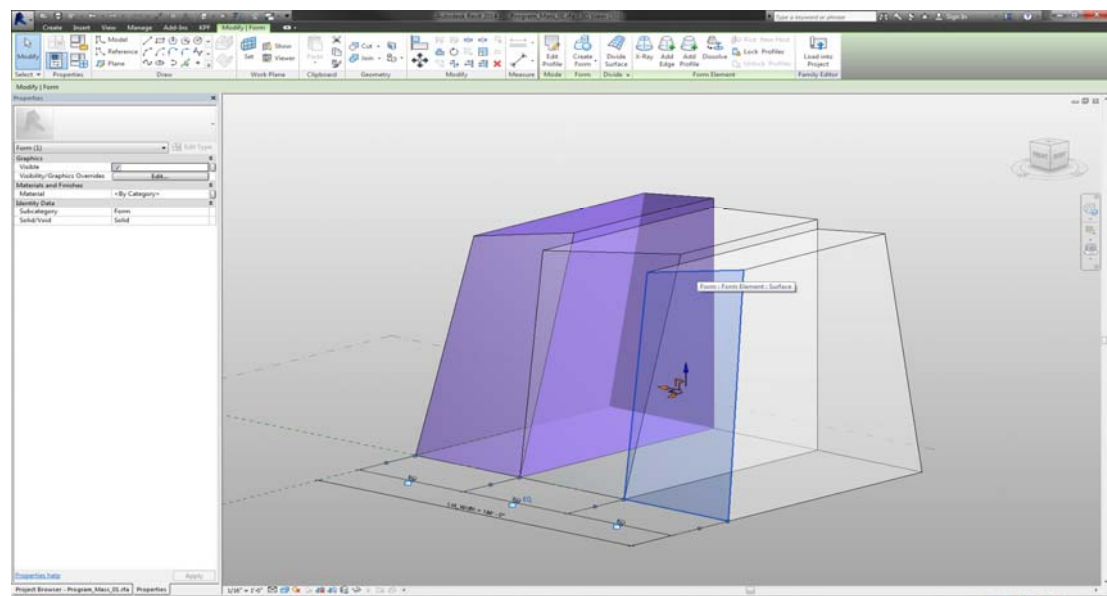
Adaptive Component

Once your model model is built, save the adaptive component.



Adaptive Component

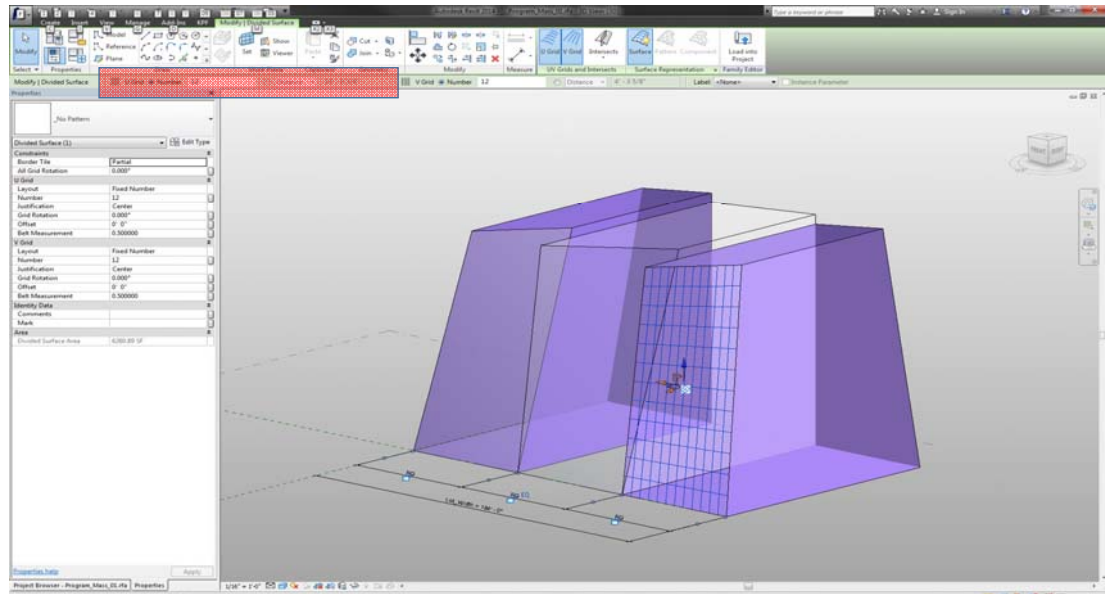
In your massing family select one of the faces from your mass





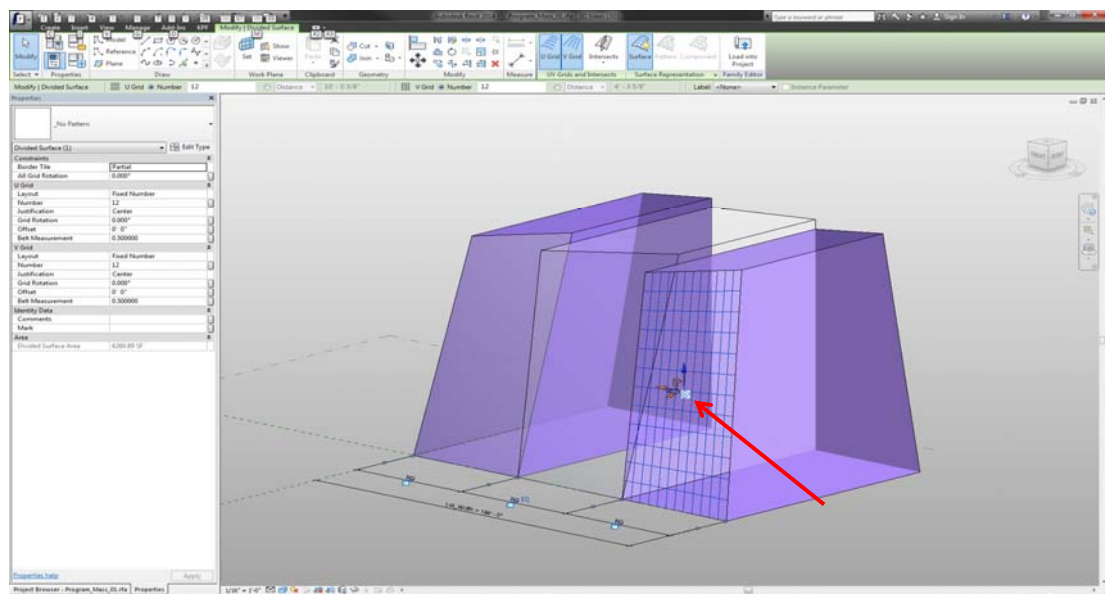
Adaptive Component

You can adjust the divisions for the U and V by number or by distance



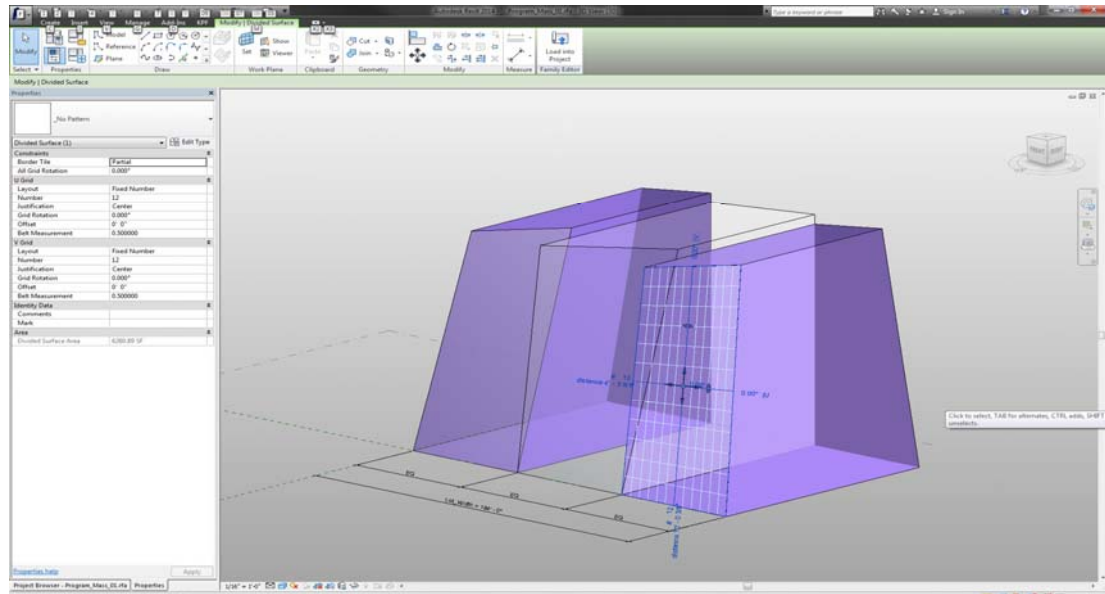
Adaptive Component

You can adjust the distribution of the divisions by clicking the square icon in the middle



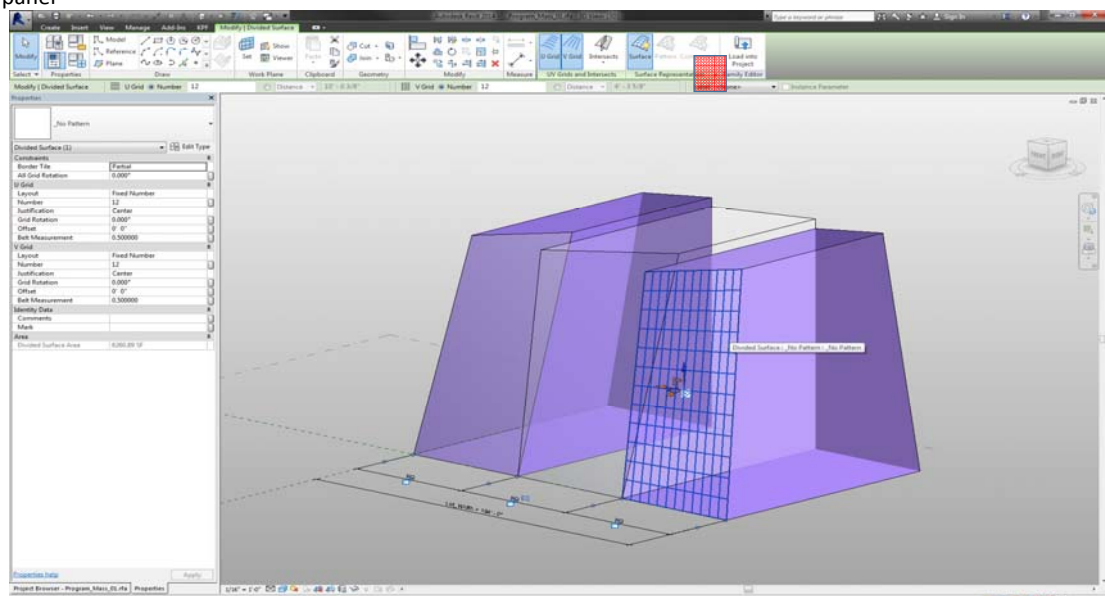
Adaptive Component

You can adjust the distribution of the divisions by clicking the square icon in the middle



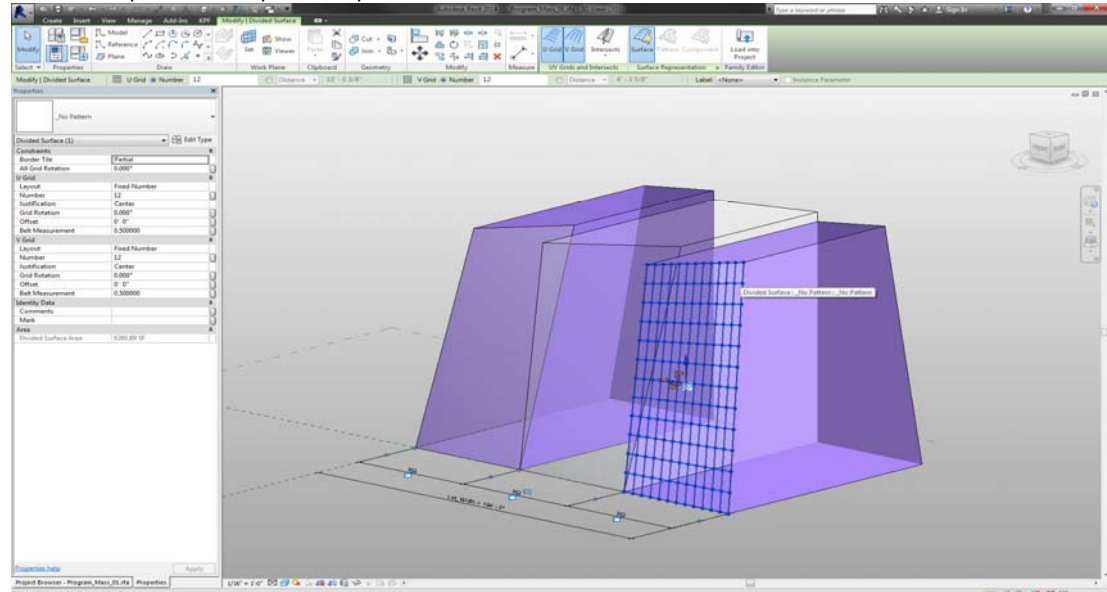
Adaptive Component

Select the sub divisions and select the down arrow on the surface representation panel



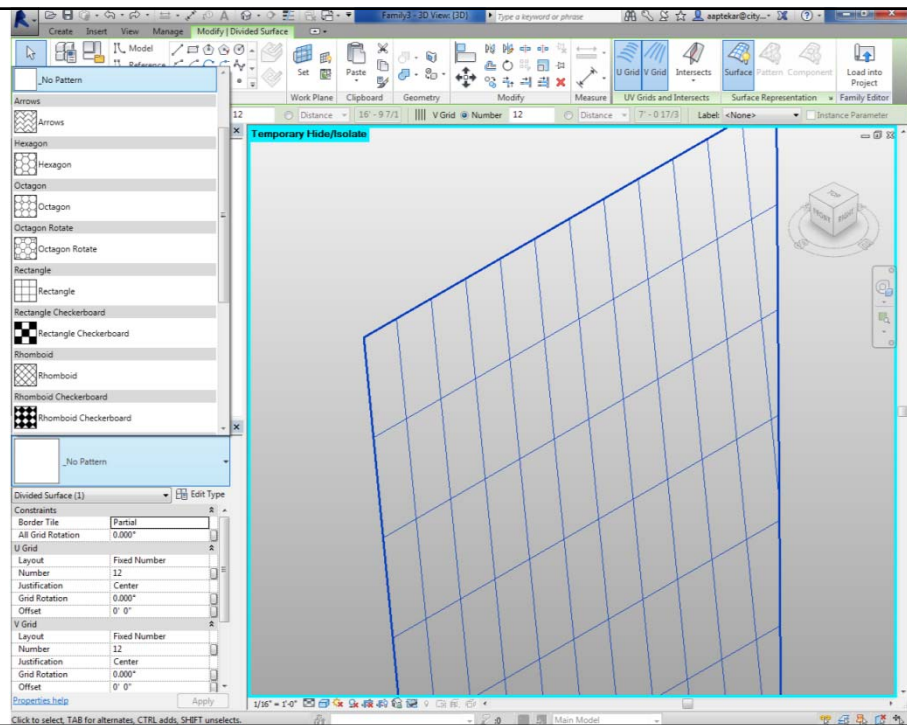
Adaptive Component

Nodes will now appear at the intersection lines of the surface subdivision.
These nodes will be used to place the adaptive components.



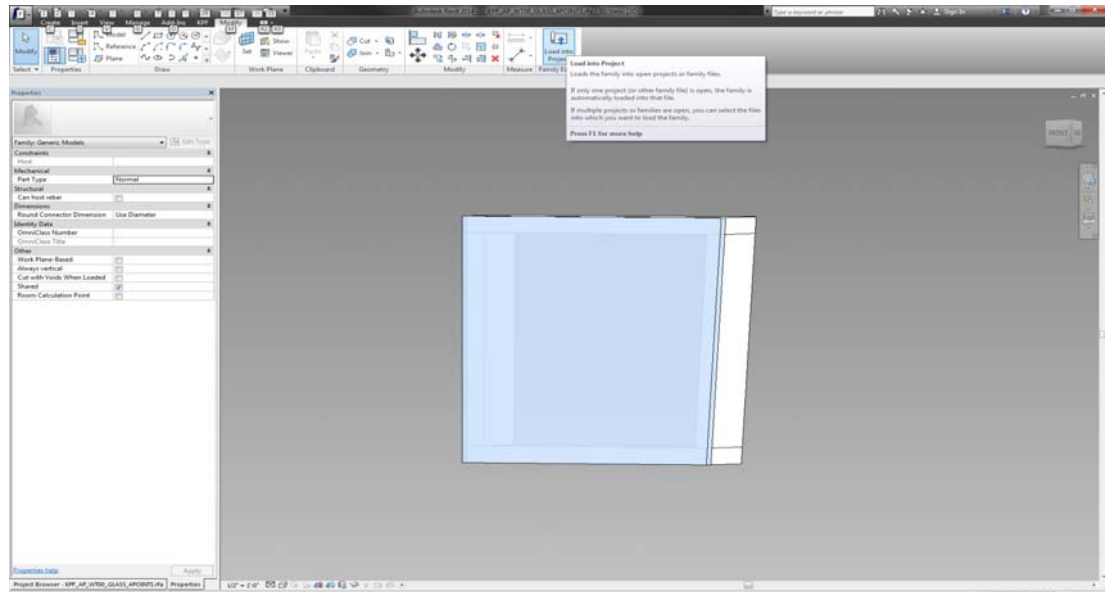
Adaptive Component

???



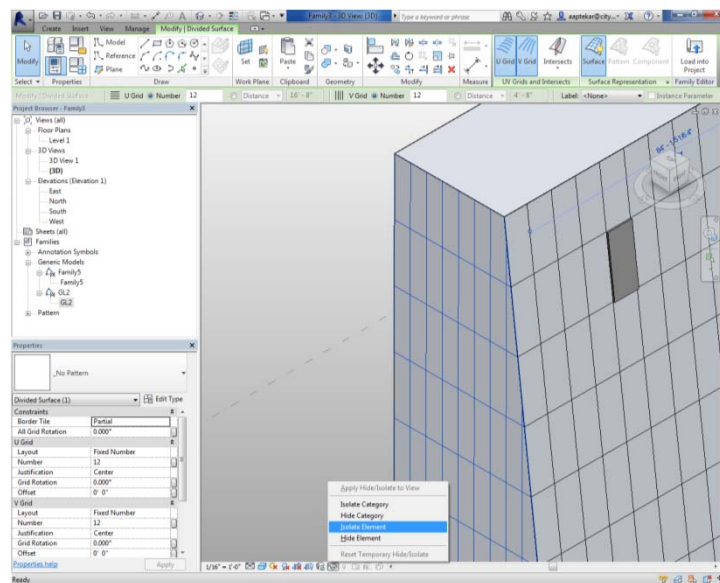
Adaptive Component

Load the component into the massing family.



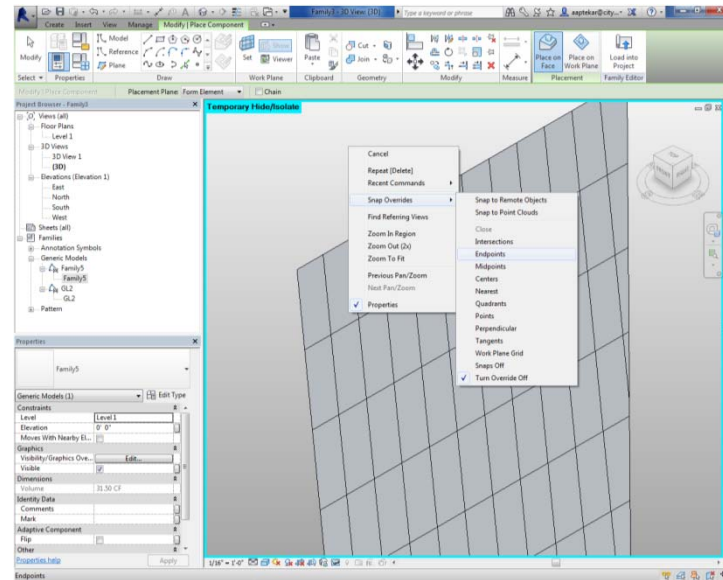
Adaptive Component

???



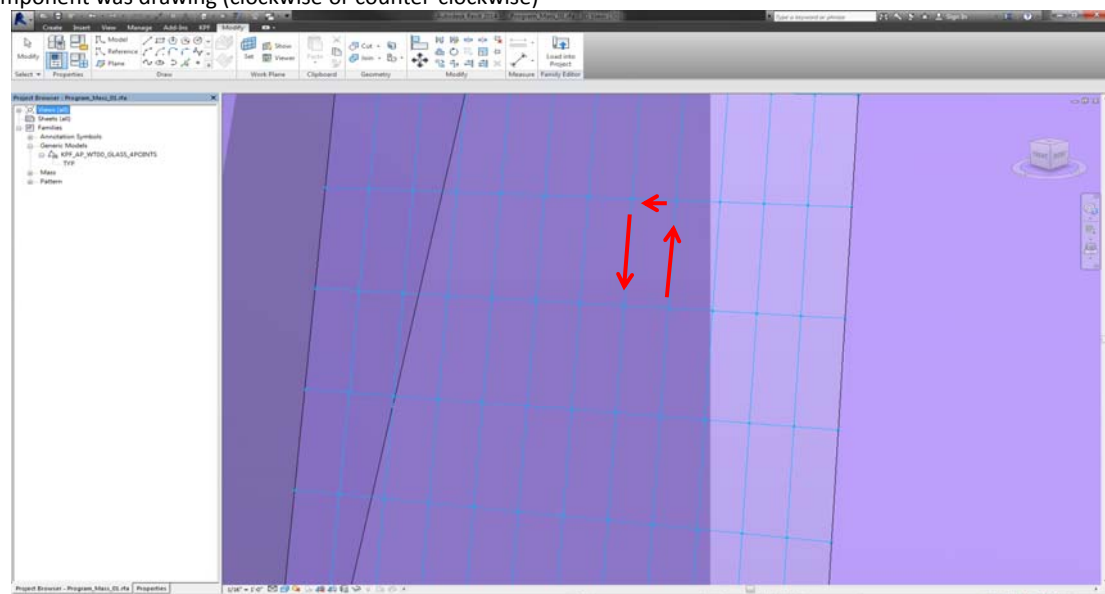
Adaptive Component

???



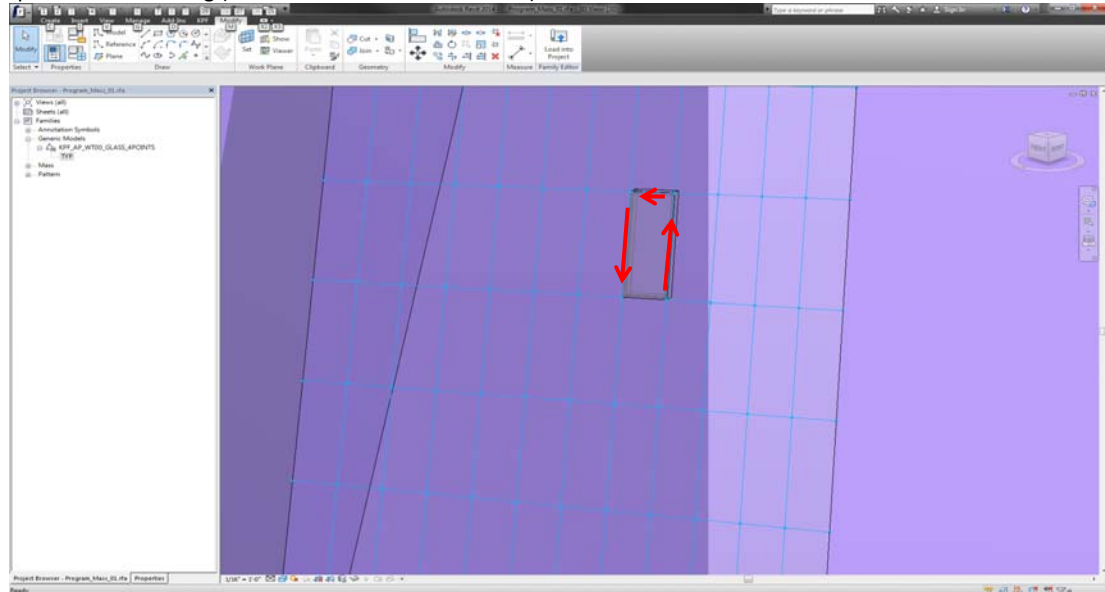
Adaptive Component

Use the nodes to place your first component. Select the nodes in the same order as the component was drawing (clockwise or counter-clockwise)



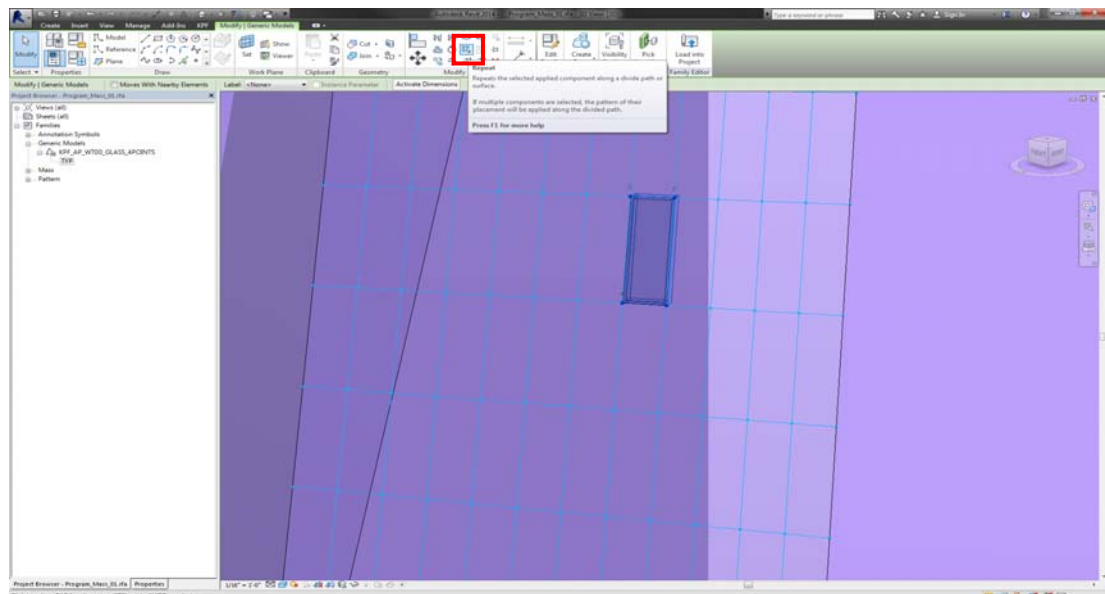
Adaptive Component

Use the nodes to place your first component. Select the nodes in the same order as the component was drawing (clockwise or counter-clockwise)



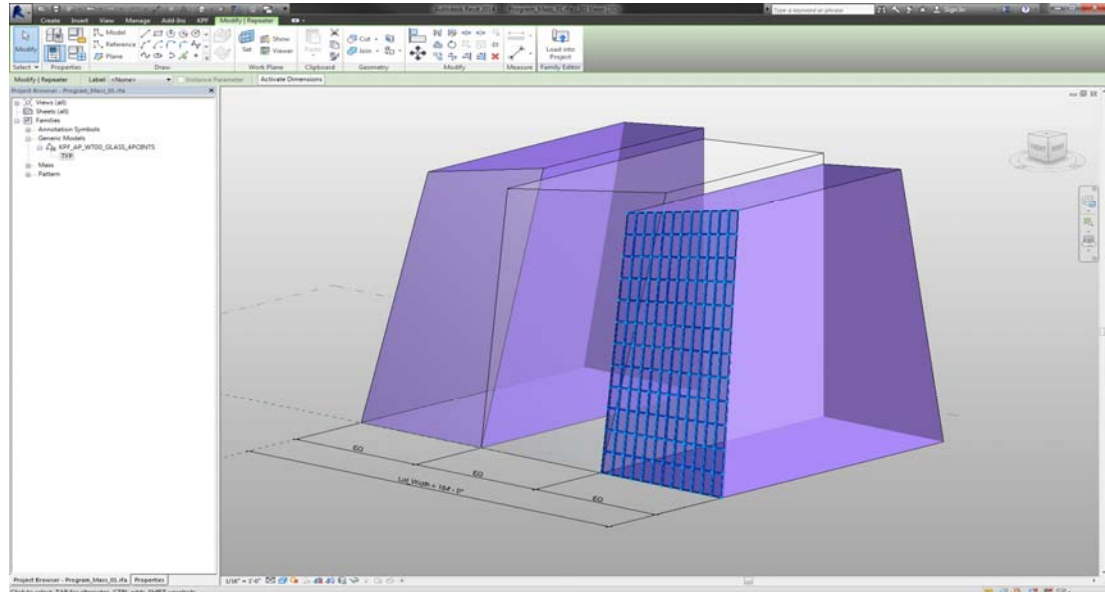
Adaptive Component

Select the newly placed panel and use the REPEAT command to populate the façade.



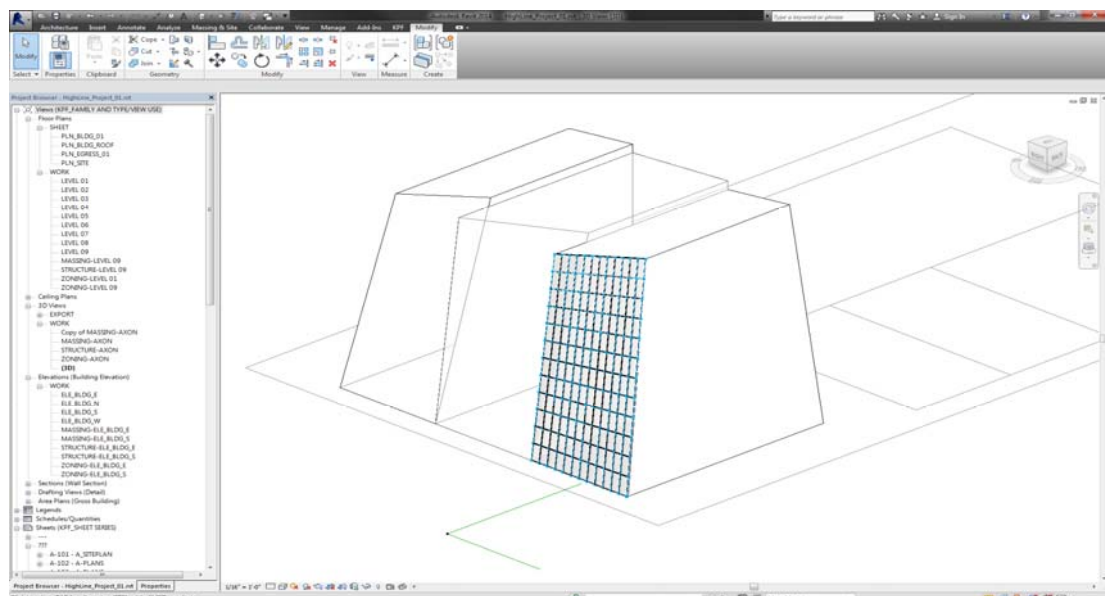
Adaptive Component

Select the newly placed panel and use the REPEAT command to populate the façade.



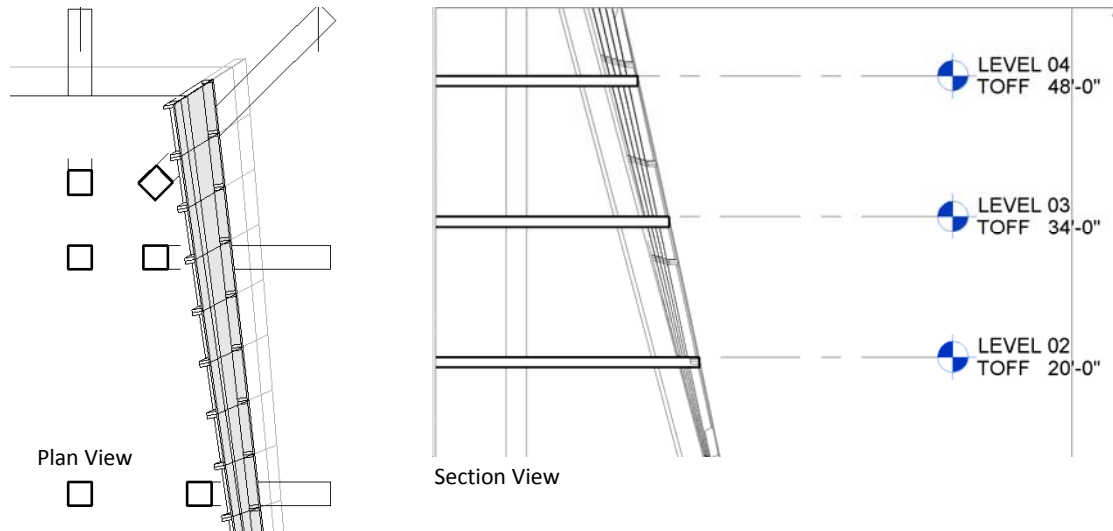
Adaptive Component

Load massing family back into the main project file.



Adaptive Component

When you go into plan or section view, the panels appear as expected.



Adaptive Component

Reference links

Adaptive components:

<http://help.autodesk.com/view/RVT/2014/ENU/>

Adaptive points:

<http://www.youtube.com/watch?v=gBJjAFvBnRw>

Divide surfaces:

<http://www.youtube.com/watch?v=bBQuL06bMzY>

Advanced adaptive components:

<http://www.youtube.com/watch?v=POND315utnY>