

ARCH 2331

BUILDING TECHNOLOGY II



<https://lunawood.com/projects/casa-montana/>

Architect, Neoblock Modular, Spain 2016 (Photo, Mariela Apollonio)

Fiber Cement Siding



Fiber Cement Siding



Fiber Cement Siding

Shapes



Perfection Shingles



Random Square
Straight Edge



Random Square
Staggered Edge



Half-Rounds



Octagons

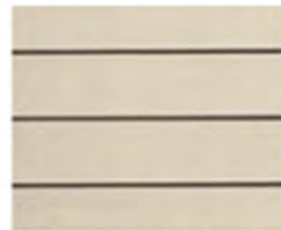


Individual Shakes

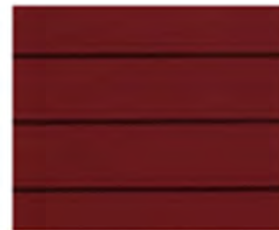
Lap Siding



Cedar Lap Siding



Smooth Lap Siding



Smooth Beaded
Lap Siding



Textured Beaded
Lap Siding



Textured Dutchlap
Siding

Vertical Siding



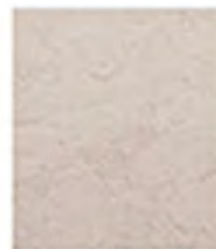
Cedar No Groove



Cedar 8" Groove



Smooth



Stucco

Fiber Cement Siding

Some typical sizes include

Panels:

8' X 4'

5'X3'

Siding

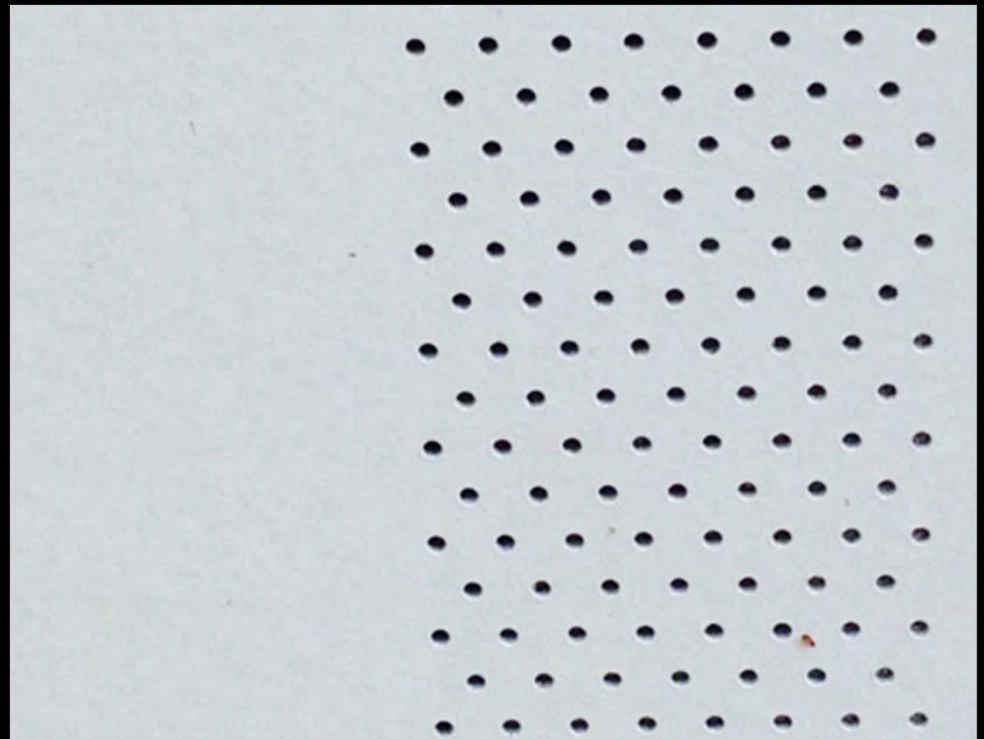
12' X 12"

12' X 9.5"

12' X 8.25"

12' X 7.5"

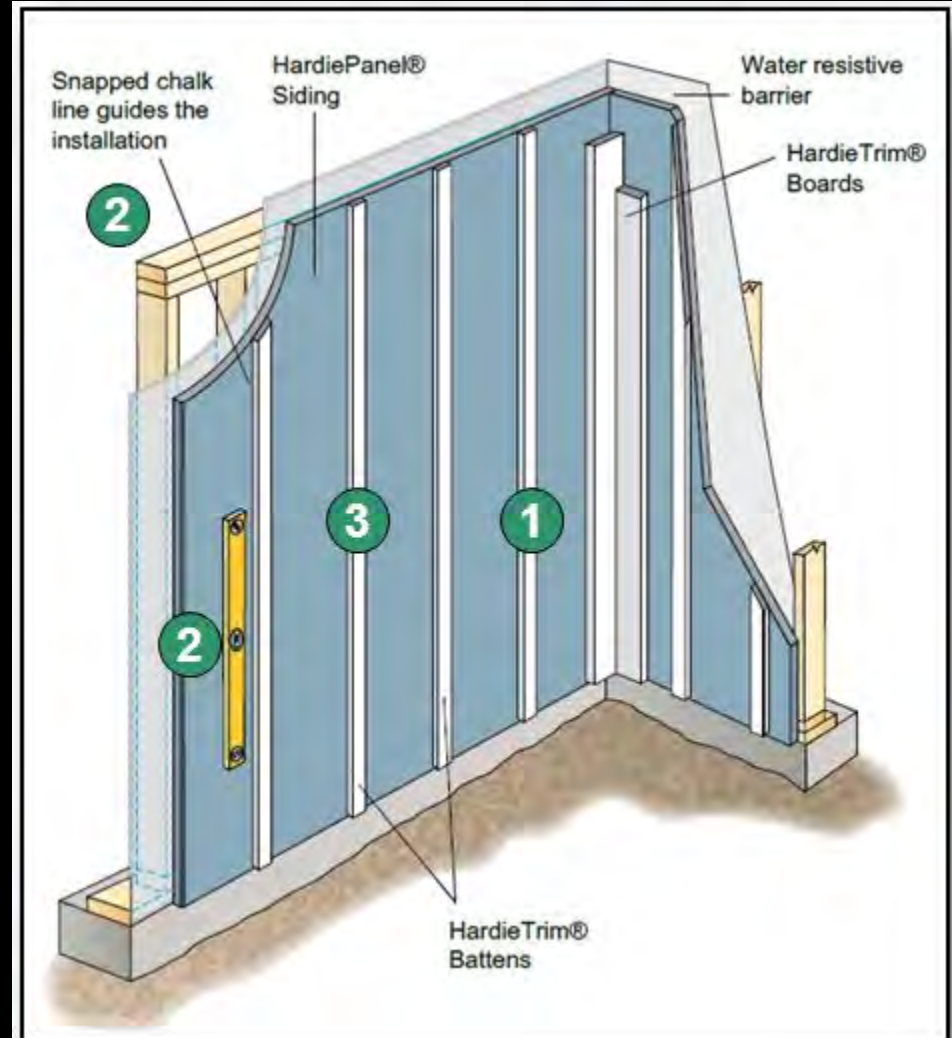
12' X 6.5"



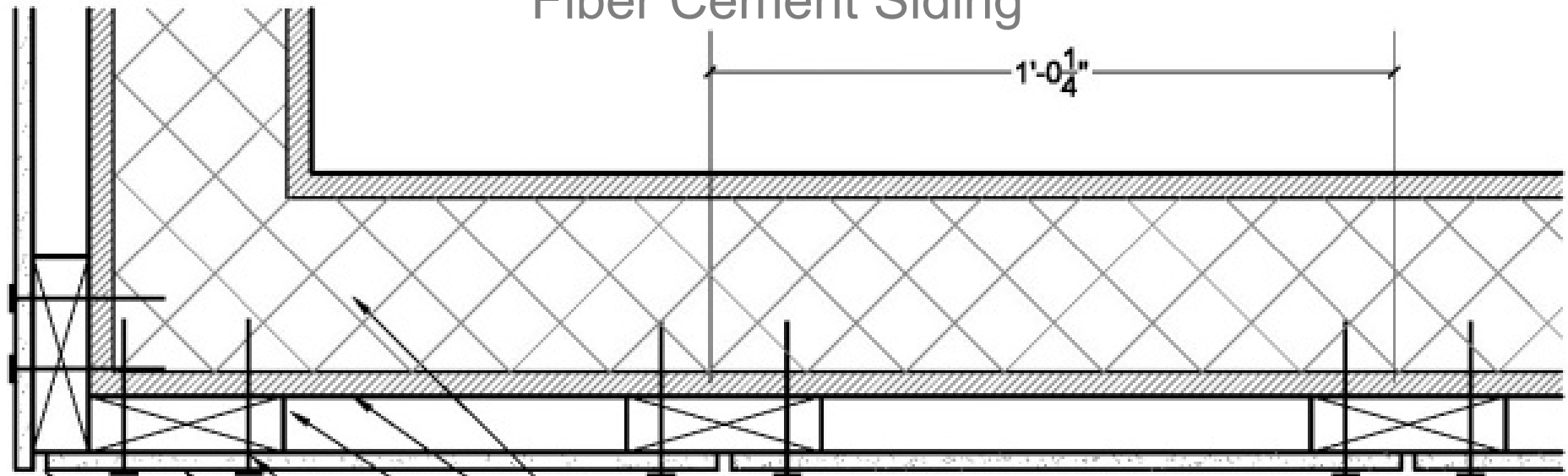
Fiber Cement Siding



Fiber Cement Siding



Fiber Cement Siding



SIP

WATER RESISTIVE BARRIER

4/4" X 3 1/2" PRIMED SMOOTH FIBER CEMENT TRIM,
FASTENED WITH DOUBLE HD GALVANIZED/S.S. SCREWS
MIN. 3/4" FROM EDGE

6D 2" SIDING NAILS, DOUBLE
HD GALVANIZED/S.S., 12" O.C. VERTICALLY,
MIN. 3/4" FROM EDGE OF TRIM, MIN. 3/8" FROM
EDGE OF BOARD

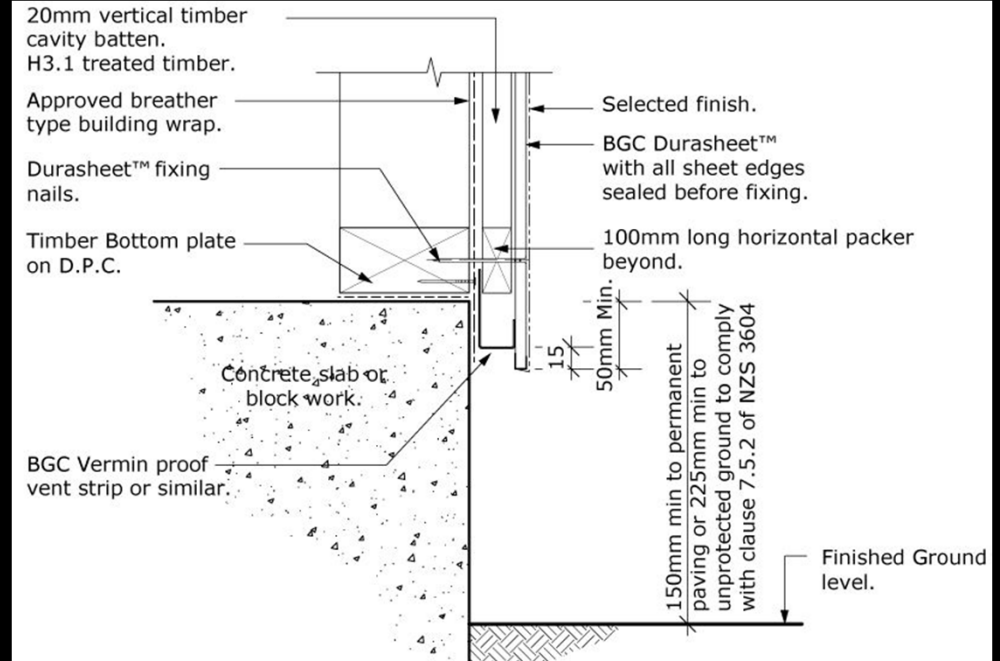
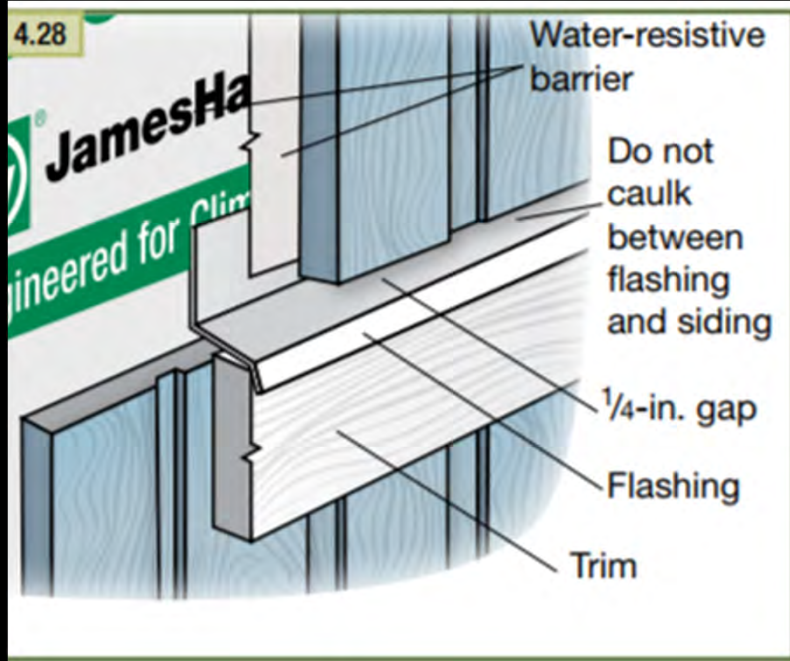
12" CERTAINTED FIBER CEMENT LAP SIDING, SMOOTH TEXTURE
FACE, ORIENTED VERTICALLY, STAGGERED
HORIZONTAL JOINTS

CAULK JOINT BETWEEN BOARD AND TRIM

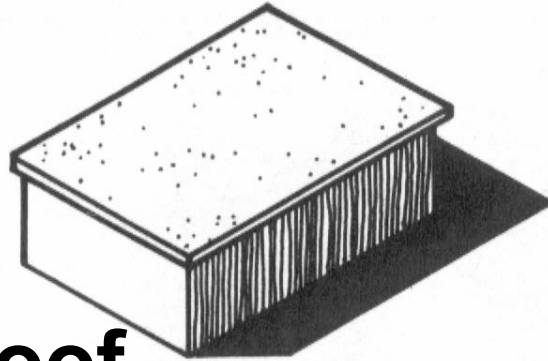
Fiber Cement Siding



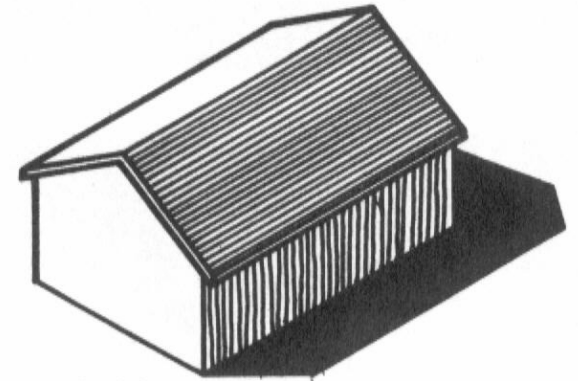
Fiber Cement Siding



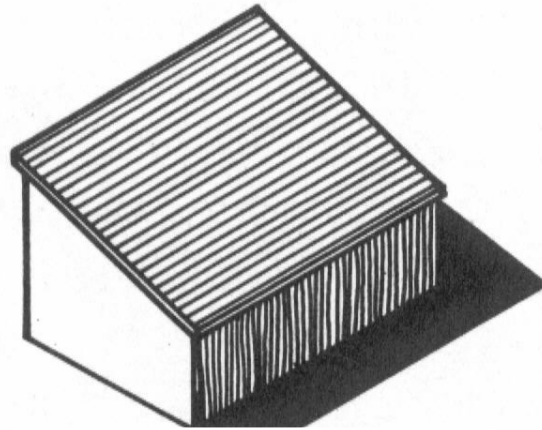
Roof Profiles



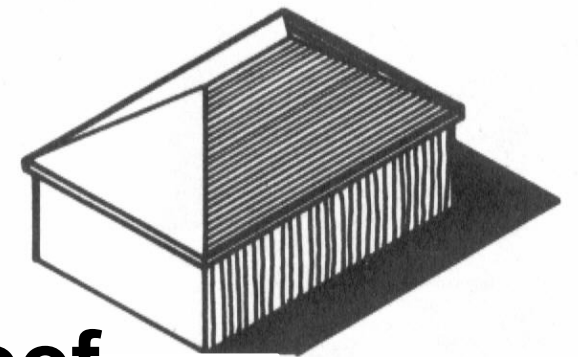
■ Flat Roof



■ Gable Roof

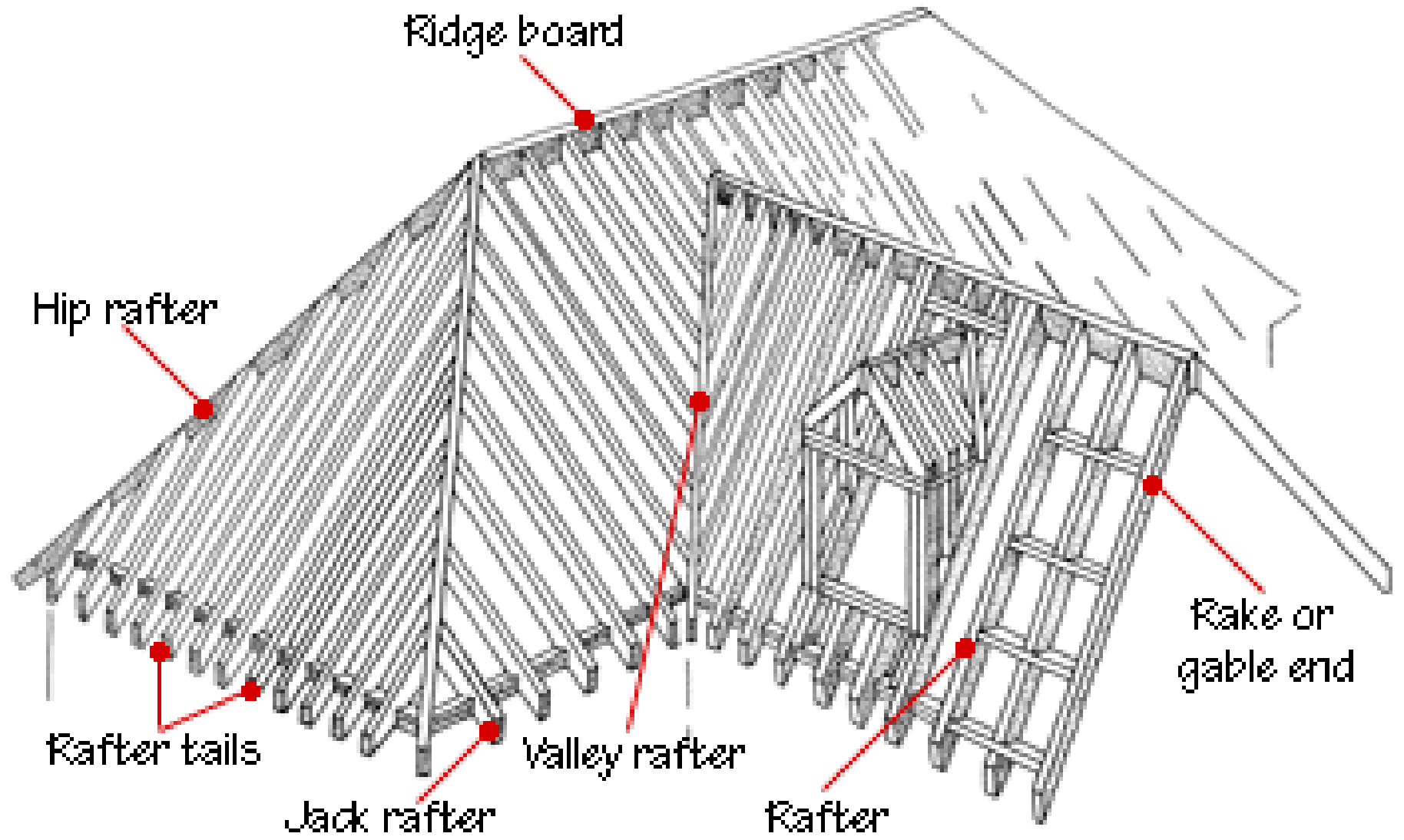


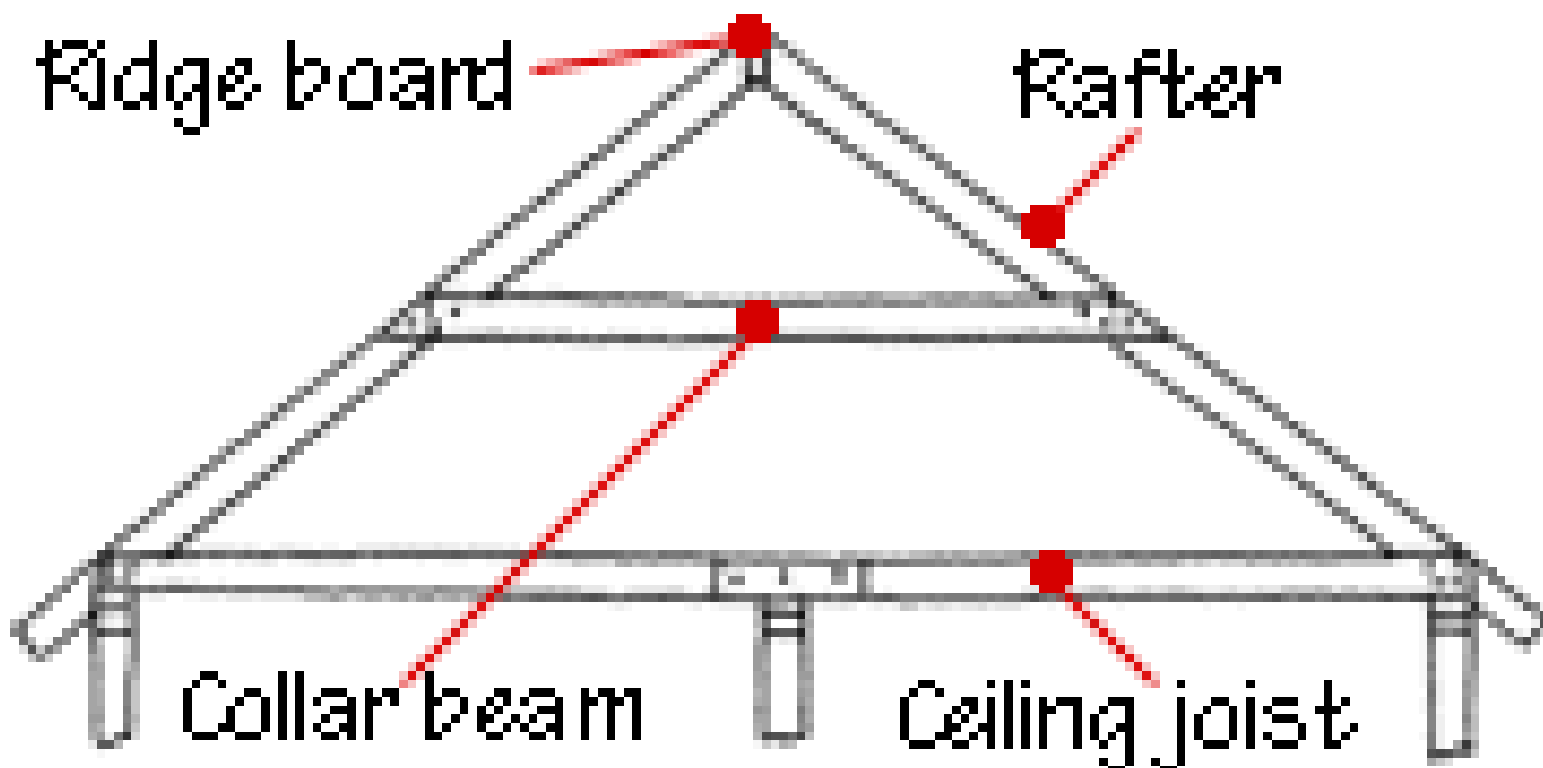
■ Single Pitch



■ Hip Roof





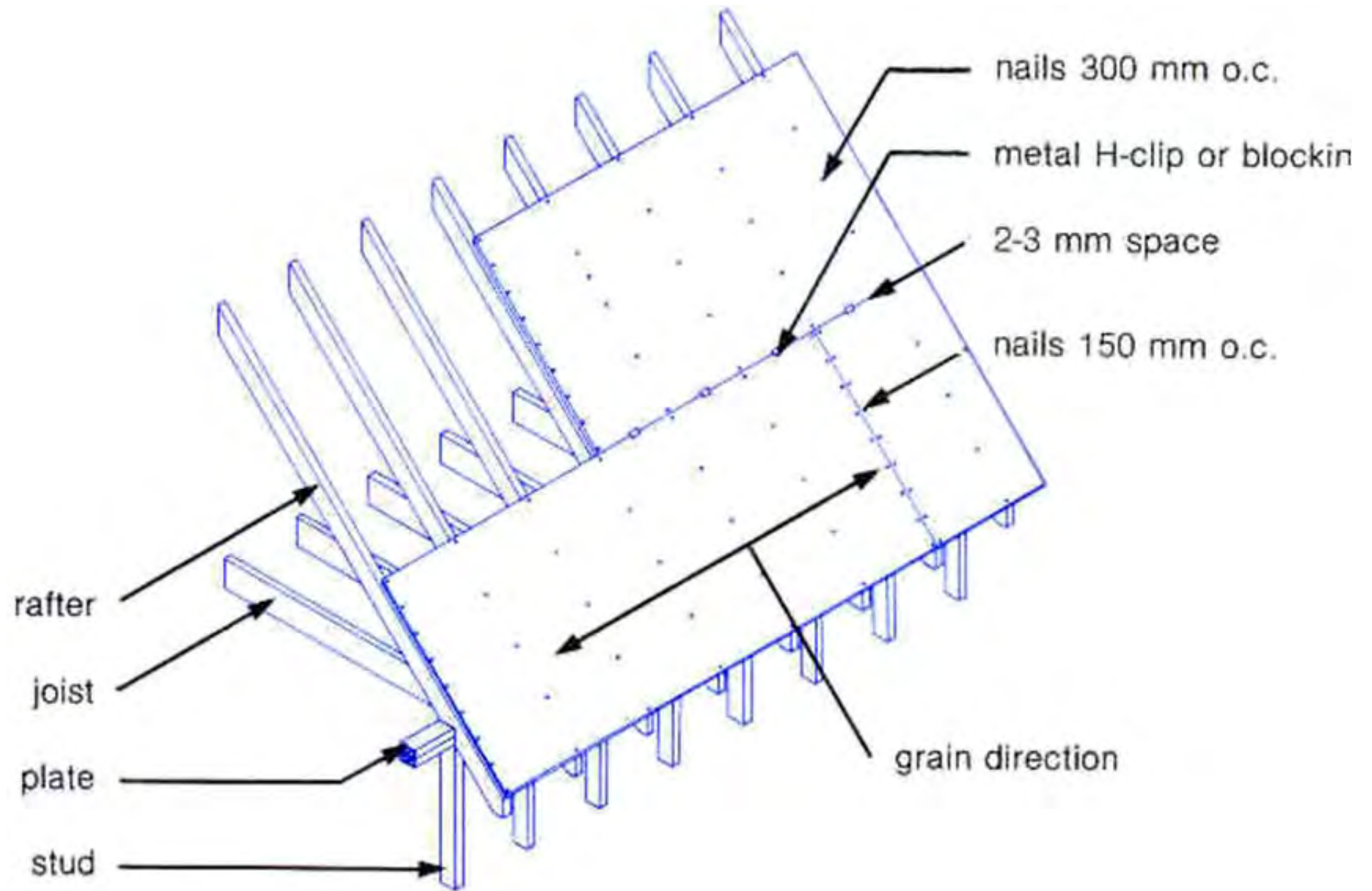


Ridge board

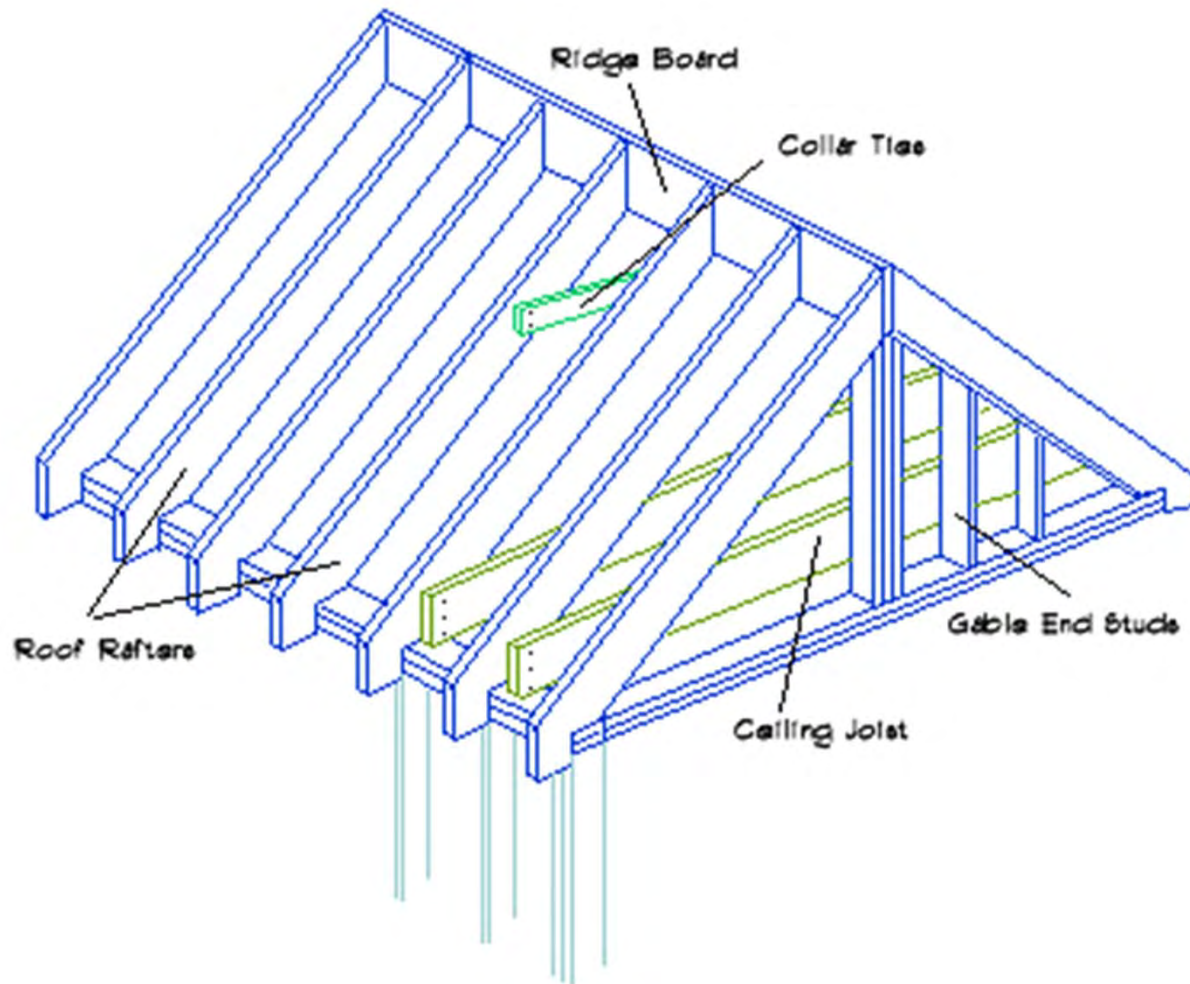
Rafter

Collar beam

Ceiling joist

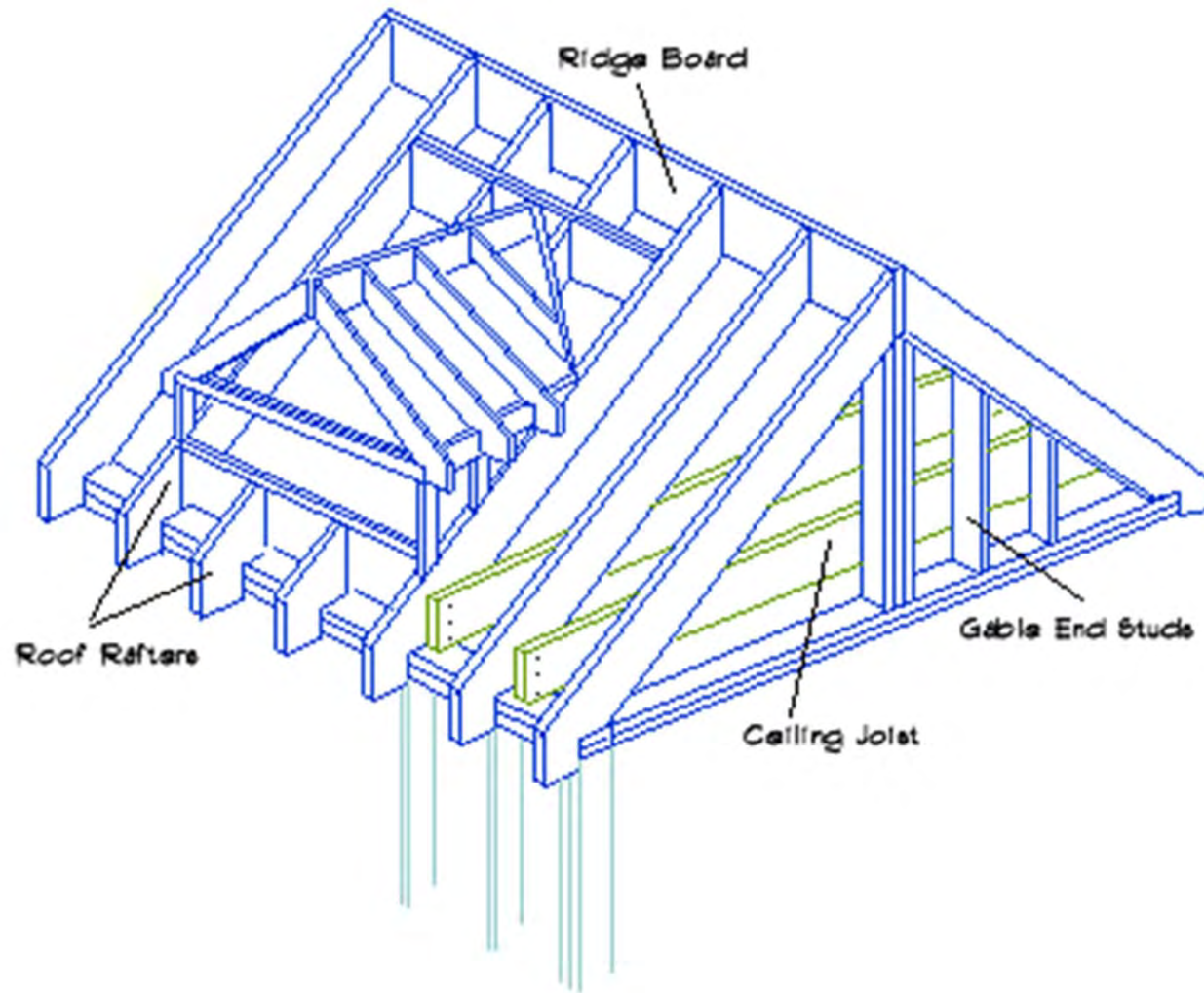


FRAMING FOR GABLE ROOF



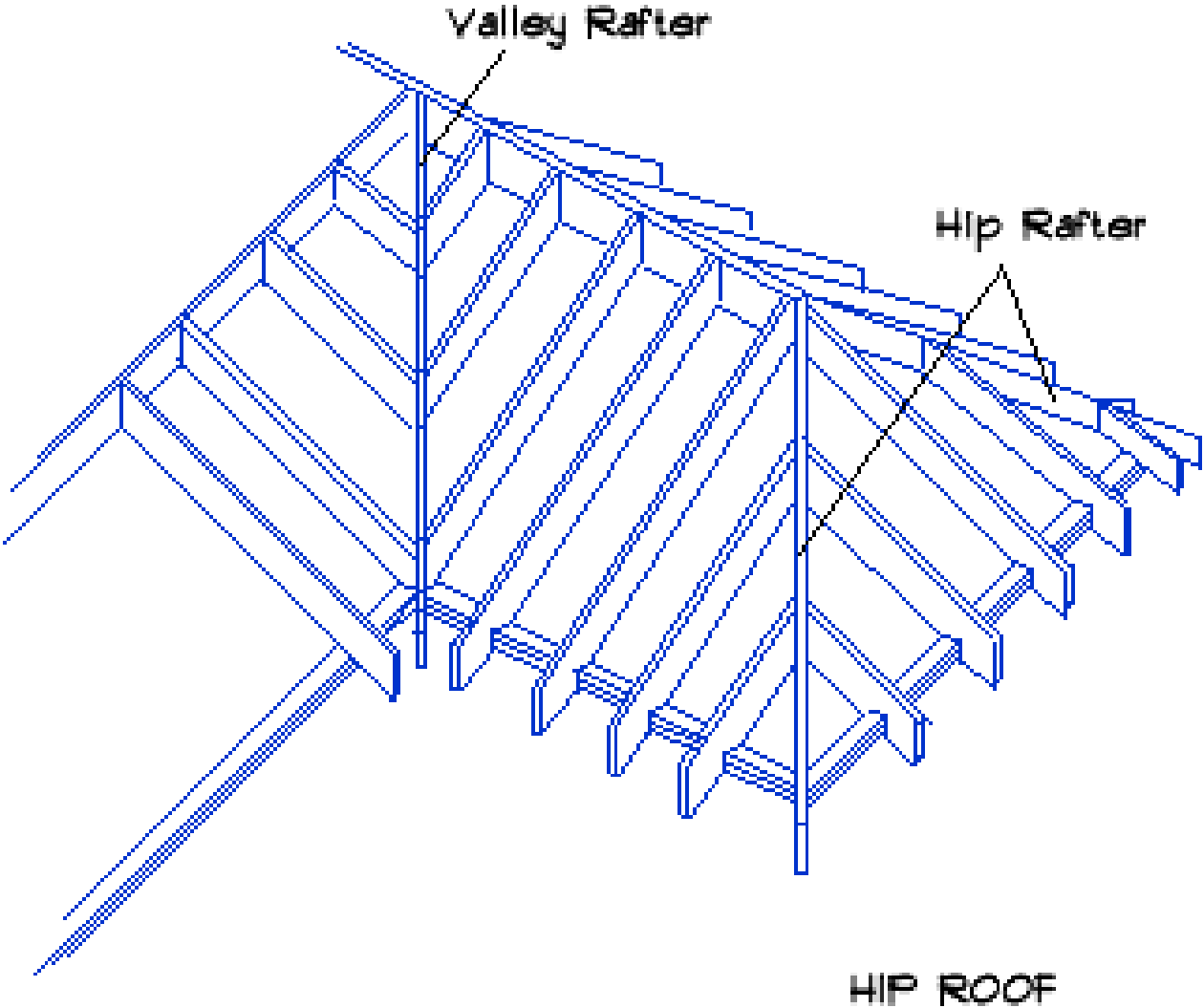
GABLE ROOF

FRAMING FOR DORMER

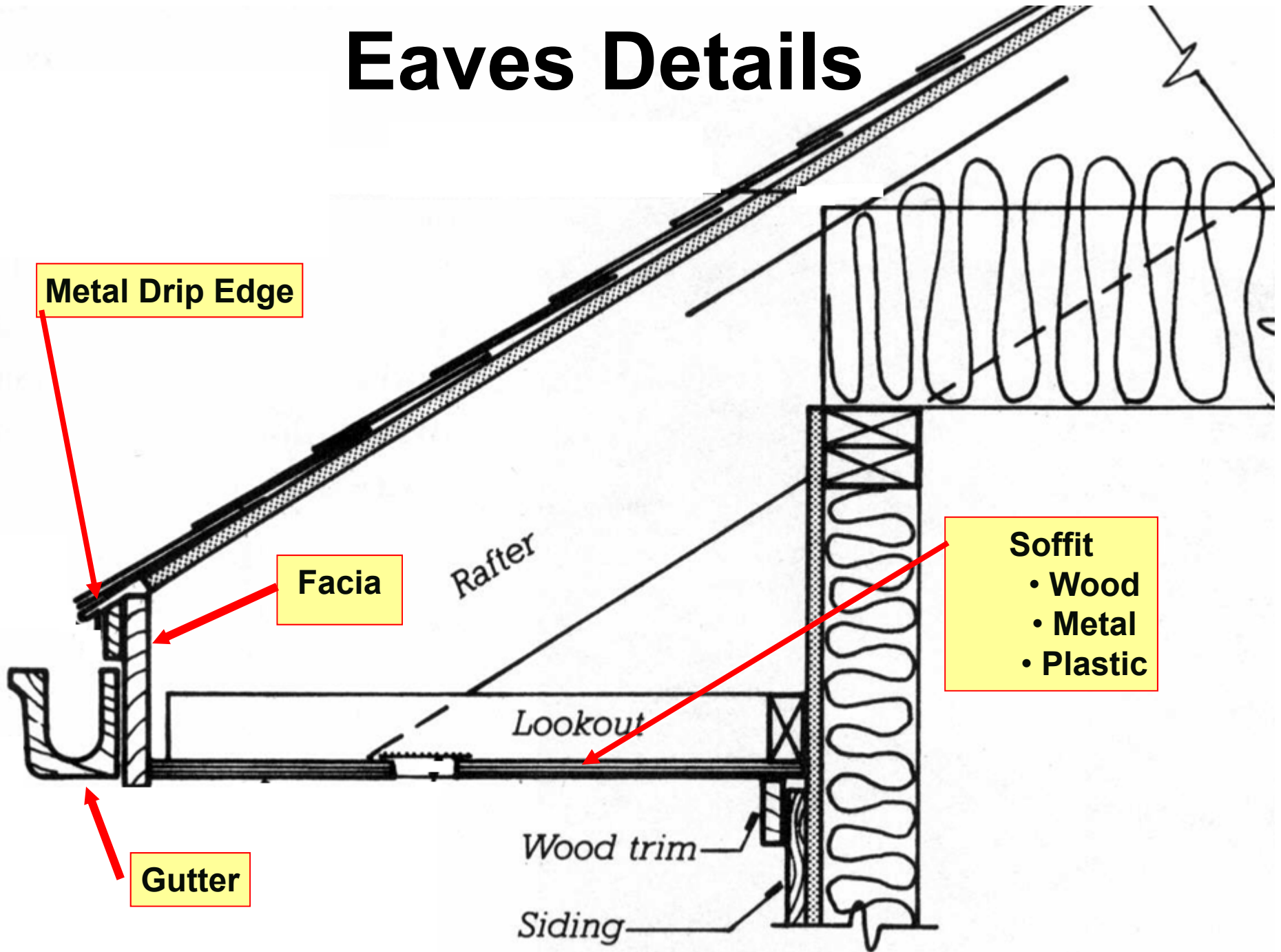


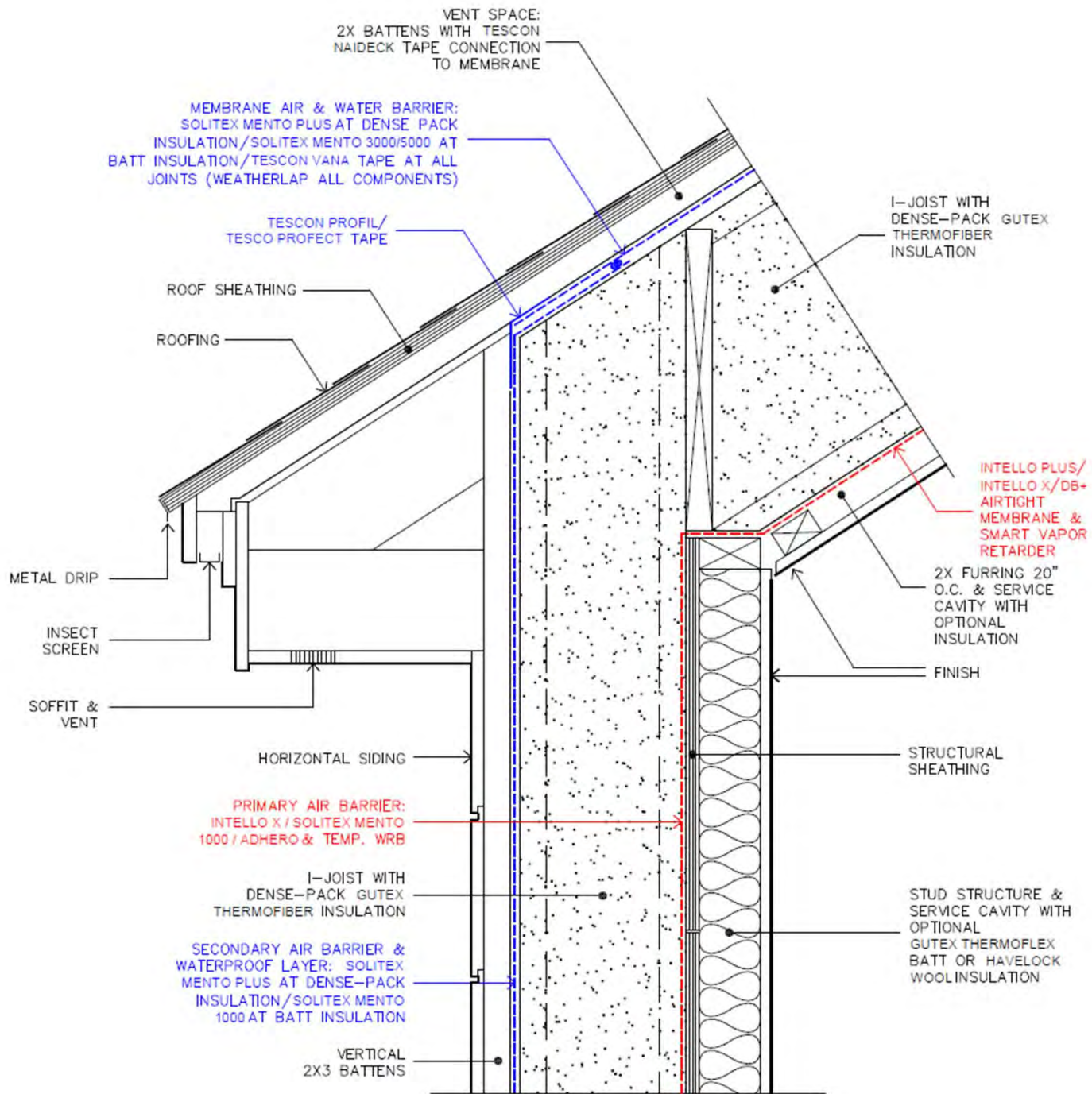
GABLE DORMER

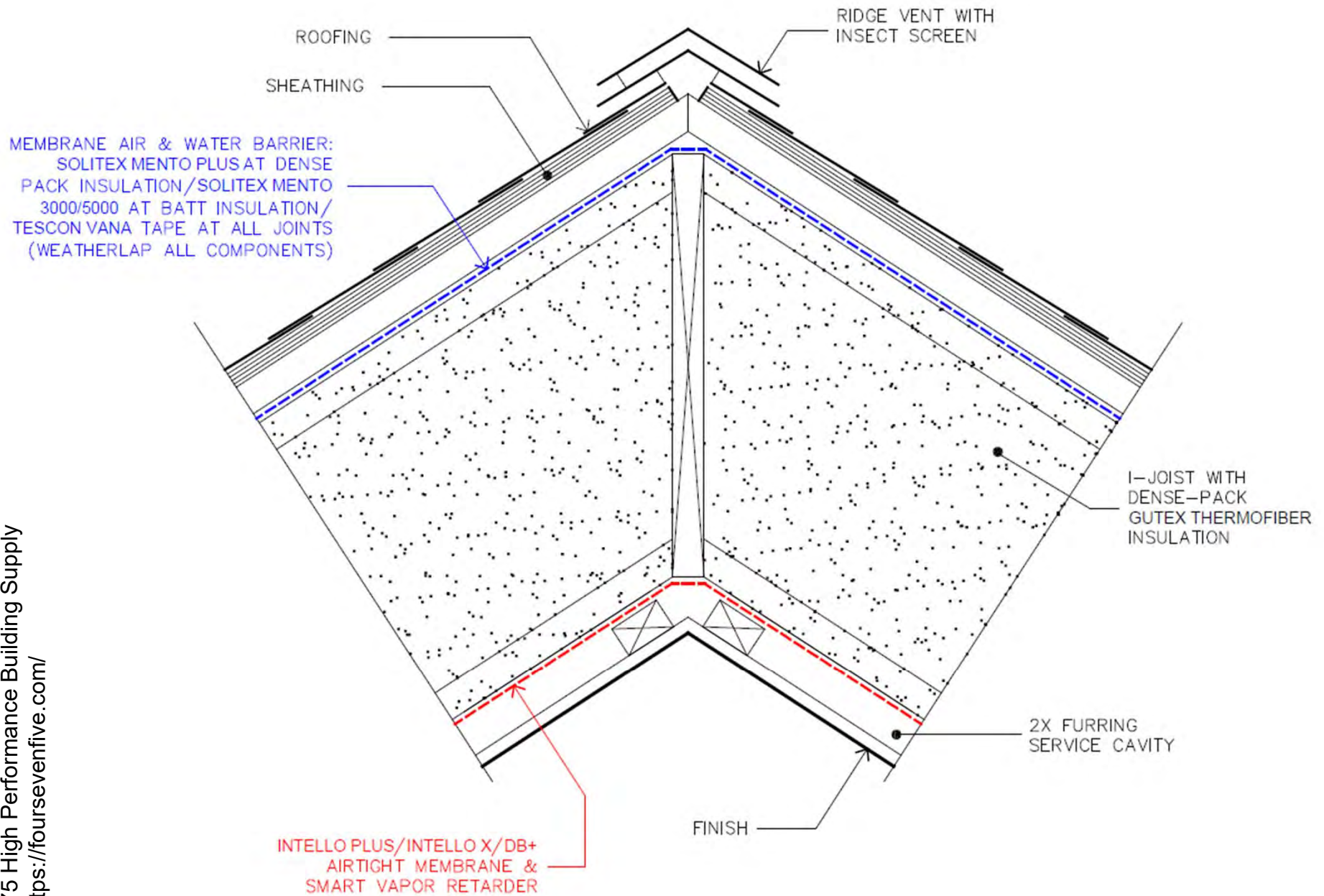
FRAMING FOR HIP ROOF

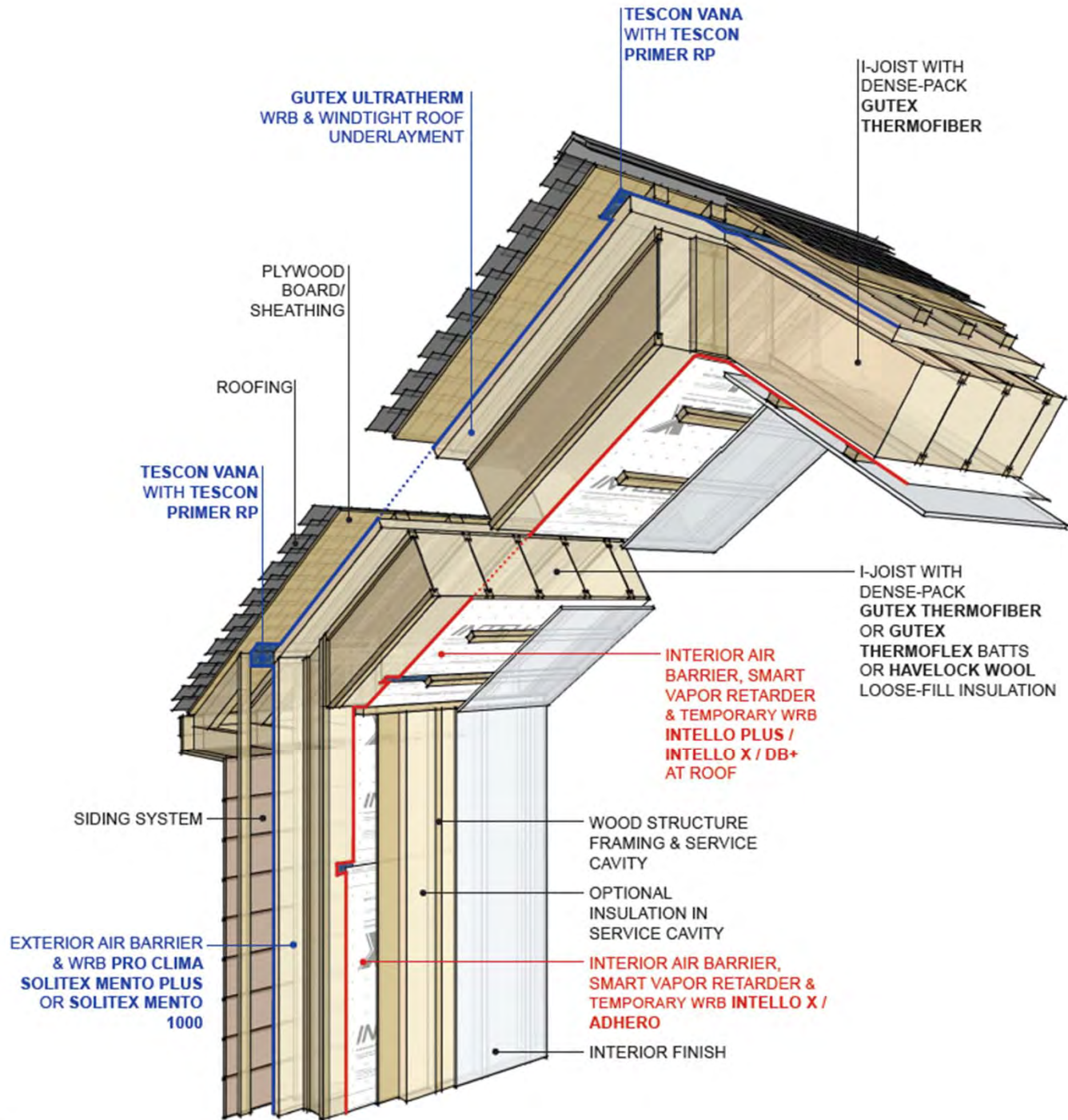


Eaves Details



















SOME TRUSS TYPES

King Post	
Queen Post	
Fink	
Howe	
Howe Scissors	
Modified Queen	

**FRANK LLOYD WRIGHT HOUSE & STUDIO:
GABLE ROOF**



HOUSE IN OAK PARK, IL. BY FRANK LLOYD WRIGHT: HIP ROOF



**"Kraggsyde," Manchester-by-the-Sea, MA
by Peabody and Stearns, c.1882:
HIP & GABLE ROOFS**



GAMBREL ROOF





MANSARD ROOF

