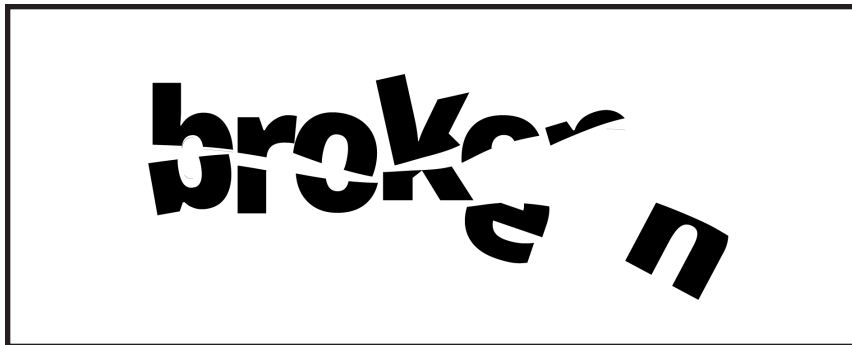
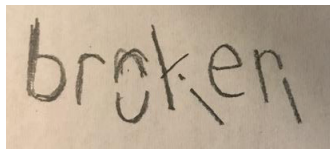
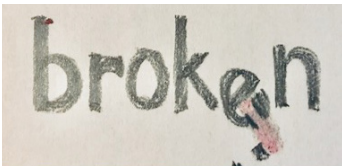


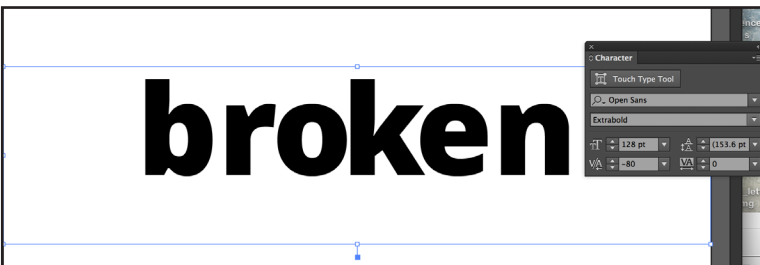
How to USE the PATHFINDER (DIVIDE) in Illustrator

Sometimes to further create expression, we need to manipulate type. This example shows how to divide the letters into smaller pieces



In Illustrator
 Create a new document
 Go to **FILE> NEW**
 10 x 4 inches

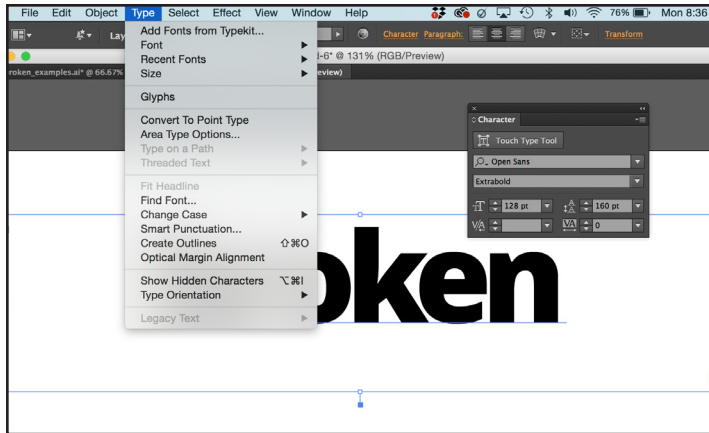
Interpret your sketch.



Manipulate **tracking and kerning** as necessary



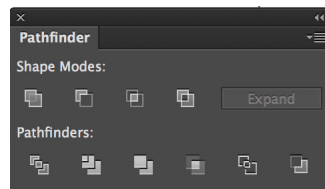
This example shows tight tracking and kerning.
 Keep manipulating until right.



Once FINISHED, then go to **TYPE** and **CREATE OUTLINES**



Now rather than a typeface **this is an image**



Go to **WINDOWS> PATHFINDER**



On this example, I used the paintbrush.
Made a horizontal line over the entire text.

Then selected everything (line and the text/image under it). Went to **PATHFINDER> DIVIDE**



The text image got divided into pieces. With the **DIRECT SELECTION tool** (the white arrow), you can now separate individual pieces. You can move them and rotate them.

InDesign has a PATHFINDER too, but slightly different. This is a stronger tool in Illustrator.

FOLLOW previous specs. All three WORDS are due on digital form (with actual typeface) this Thursday.