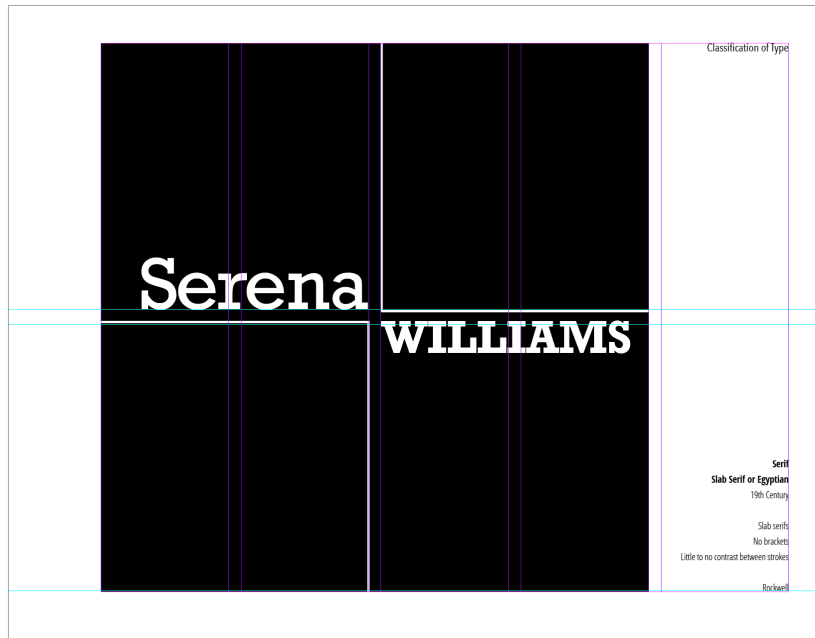


Graphic Assignment:

Type Classification or Families of Type:

Use pages 3 to 5 of your Book Document

**5th Column Info:**

- Name of Classification and Sub Classification
- Timeline (when)
- Characteristics (at least 2)
- Name of typeface used

Use the first 4 columns as your entire "art area"**Page#1: Serif**

Choose: an Old Style, Transitional, Modern Typeface

Page#2: Serif

Choose: any Slab Serif Typeface

Page#3: Sans Serif

Choose: any Sans Serif Typeface

Must use your complete name of famous person / Create an interesting composition with caps and lower case or all lowercase type

Can use basic lines and shapes, but avoid gradients, illustrations and photos