



New York City College of Technology Division of Continuing Education

Building Information Modeling with Revit 2014 Module 02 *The Revit Interface & Scavenger Hunt in Class*



Professor Paul C. King, RA, AIA, ARA
Prof.Paul.King@Gmail.com

<http://professorpaulking.wordpress.com/>
<http://openlab.citytech.cuny.edu/bim101-sp14/>

<http://students.autodesk.com/>

Revit Interface

Day 02

Revit Interface

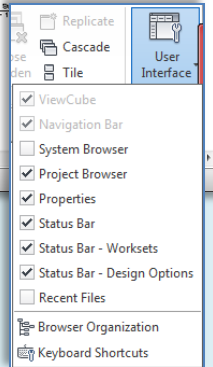
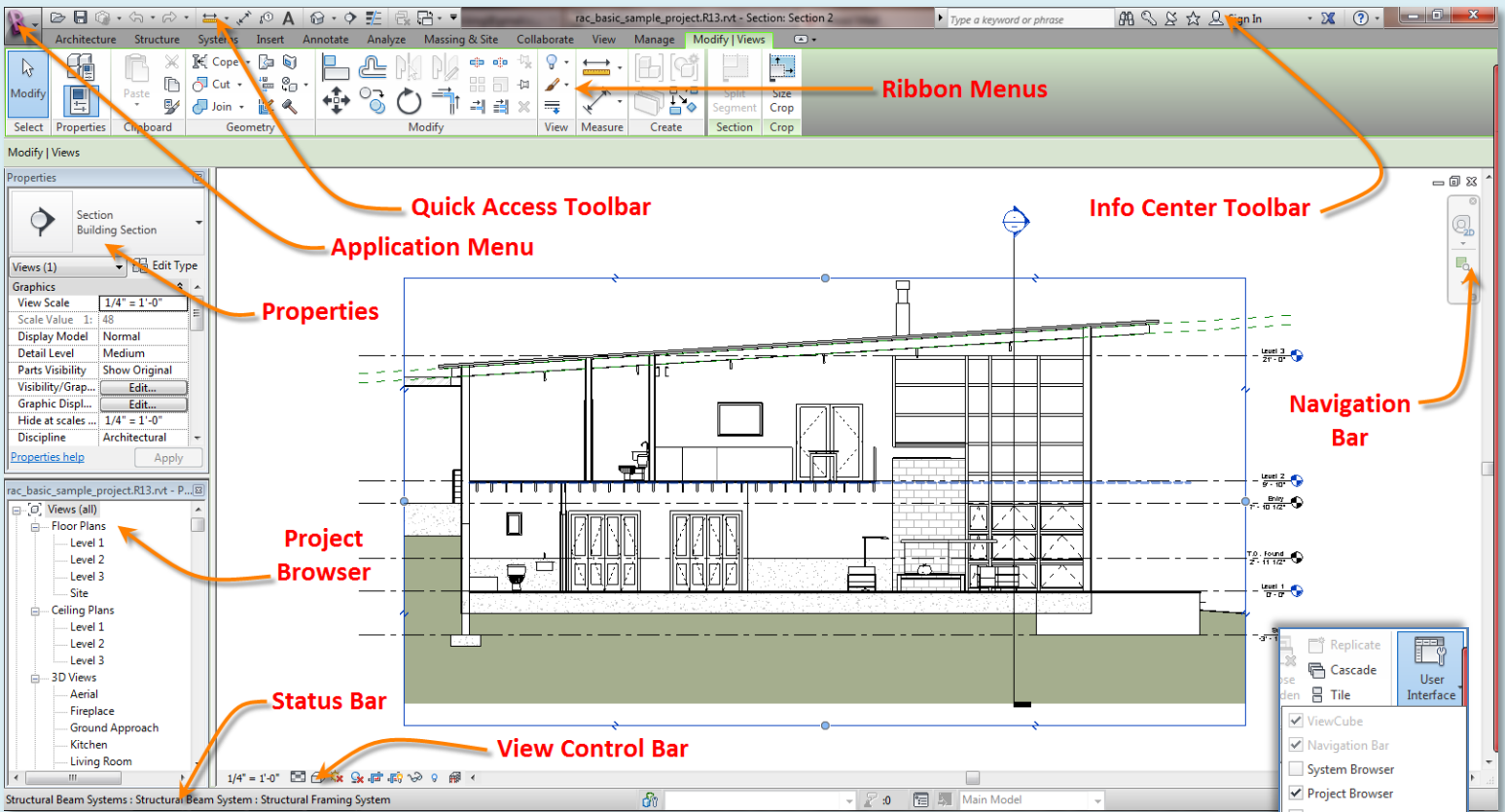
- Ribbons 1 2 3
- Quick Access
- Info Center
- View Control
- - Scale & Detail
- - Visual Styles
- - Sun Path
- - Cropping
- - Visibility Control
- - Hidden Elements

- Properties
- Project Browser
- R14 Tabbed View

- Scavenger Hunt
- Description
- New Sheet
- Add Views
- Duplicate Views
- Stair Sheet 1 2 3
- Plot to PDF

Wrap Up

Revit Introduction

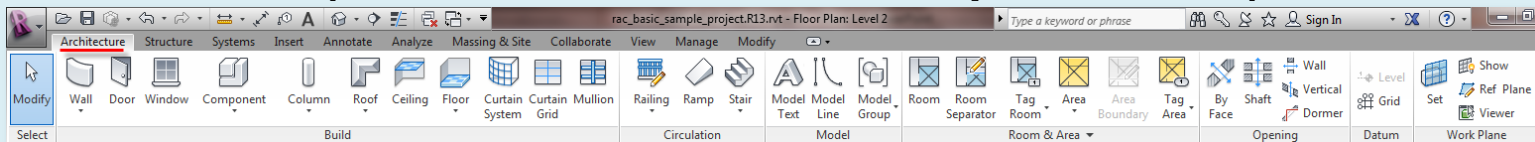


Settings on:

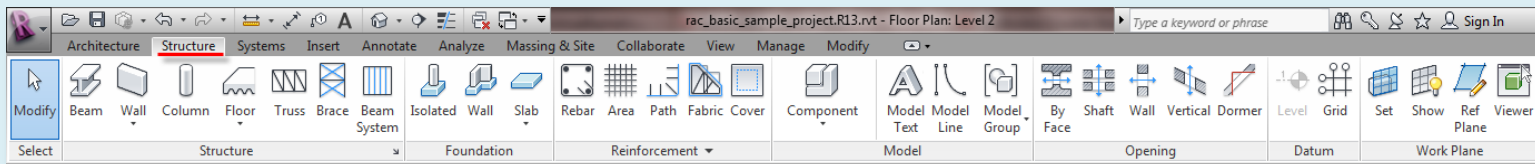
- **Viewcube, Navigation Bar, Properties, Project Browser, Status Bar, Status Bar – Worksheets, Status Bar – Design Options**

Ribbons 1 of 3

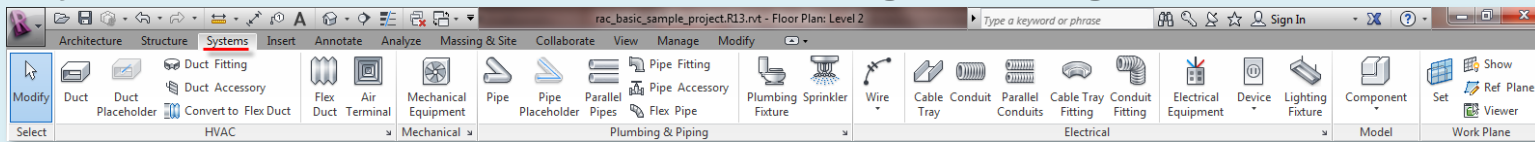
Architecture (walls, doors, windows, components . . .)



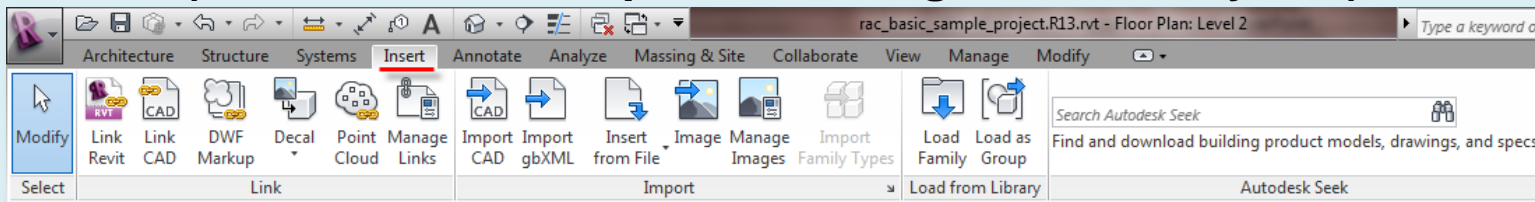
Structure (beams, structural walls & columns, floors . . .)



Systems (hvac, mechanical, plumbing & piping, electrical . . .)



Insert (link revit & cad, import cad, image, load family . . .)



Day 02

Revit Interface

- Ribbons 1 2 3
- Quick Access
- Info Center
- View Control
- - Scale & Detail
- - Visual Styles
- - Sun Path
- - Cropping
- - Visibility Control
- - Hidden Elements

Properties Project Browser R14 Tabbed View

Scavenger Hunt

- Description
- New Sheet
- Add Views
- Duplicate Views
- Stair Sheet 1 2 3
- Plot to PDF

Wrap Up

Revit Introduction

Revit Interface

- Ribbons 1 2 3
- Quick Access
- Info Center
- View Control
- - Scale & Detail
- - Visual Styles
- - Sun Path
- - Cropping
- - Visibility Control
- - Hidden Elements

- Properties
- Project Browser
- R14 Tabbed View

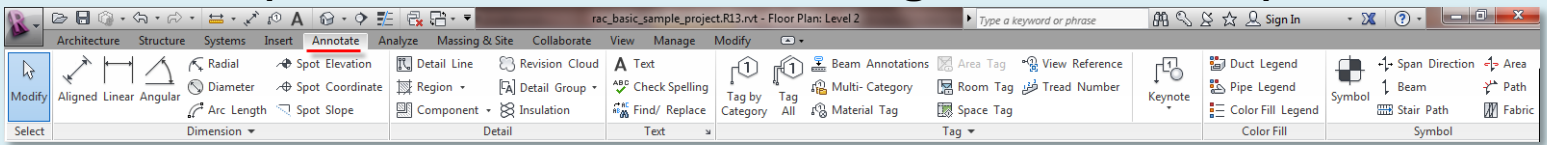
- Scavenger Hunt
- Description
- New Sheet
- Add Views
- Duplicate Views
- Stair Sheet 1 2 3
- Plot to PDF

Wrap Up

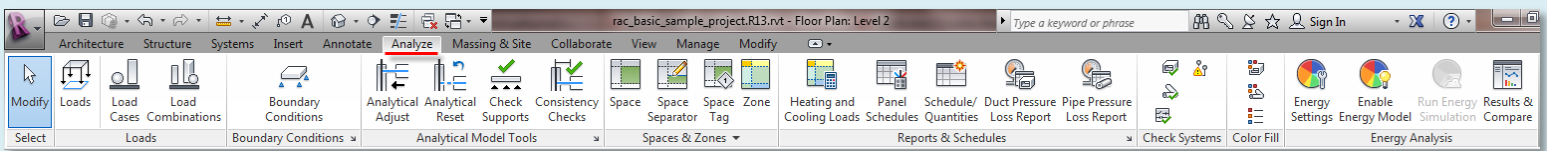
Revit Introduction

Ribbons 2 of 3

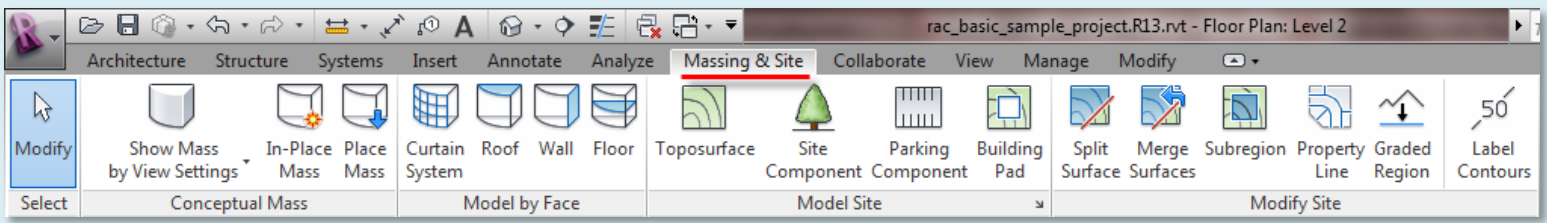
Annotate (dimensions, details, text, tags, color fill . . .)



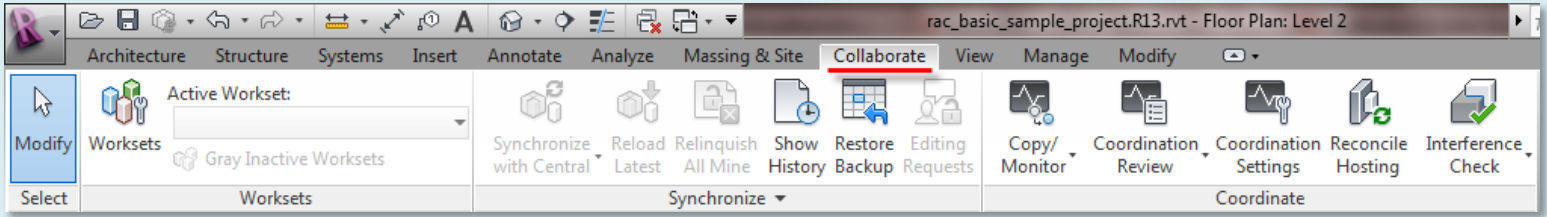
Analyze (loads, analytical model tools, energy analysis . . .)



Massing & Site (conceptual mass, model by face, model site . . .)

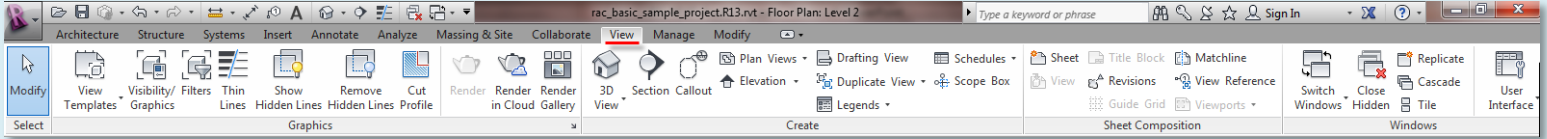


Collaborate (worksets, synchronize, coordinate . . .)

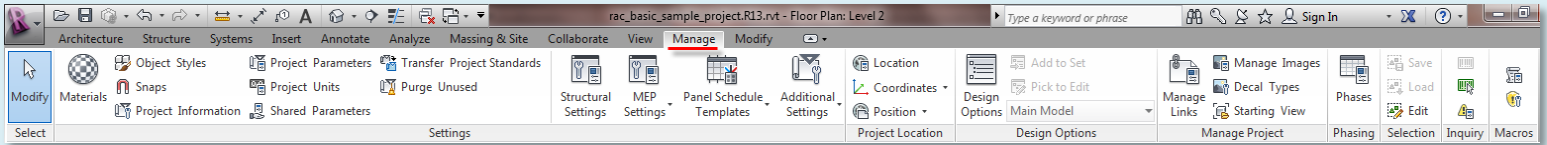


Ribbons 3 of 3

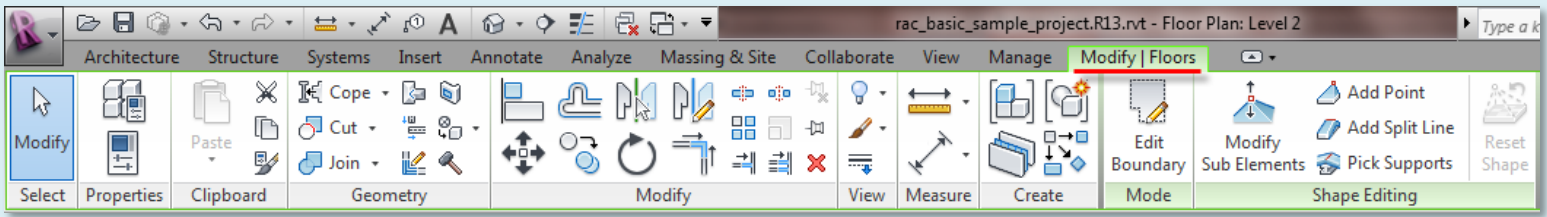
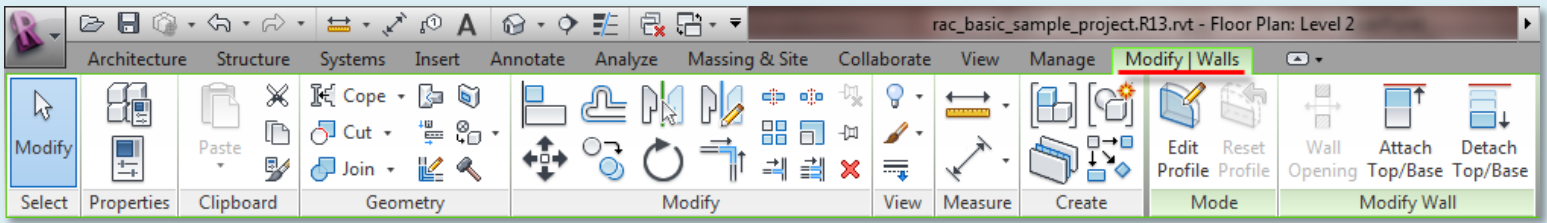
View (graphics, 3D, section, callout, plans, elevations . . .)



Manage (snaps, units, location, coordinates, position . . .)



Modify (options are dependant on object selection)



Day 02

Revit Interface

- Ribbons 1 2 3
- Quick Access
- Info Center
- View Control
- - Scale & Detail
- - Visual Styles
- - Sun Path
- - Cropping
- - Visibility Control
- - Hidden Elements

Properties
Project Browser
R14 Tabbed View

Scavenger Hunt

- Description
- New Sheet
- Add Views
- Duplicate Views
- Stair Sheet 1 2 3
- Plot to PDF

Wrap Up

Revit Introduction

Day 02

Revit Interface

- Ribbons 1 2 3
- Quick Access
- Info Center
- View Control
- - Scale & Detail
- - Visual Styles
- - Sun Path
- - Cropping
- - Visibility Control
- - Hidden Elements

- Properties
Project Browser
R14 Tabbed View

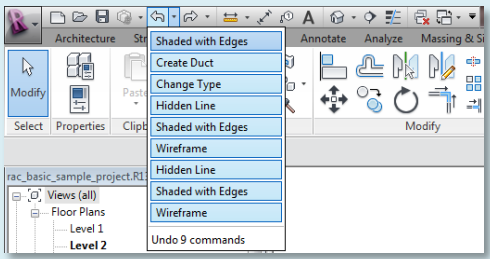
- Scavenger Hunt
- Description
 - New Sheet
 - Add Views
 - Duplicate Views
 - Stair Sheet 1 2 3
 - Plot to PDF

Wrap Up

Revit Introduction

Quick Access Toolbar

Undo

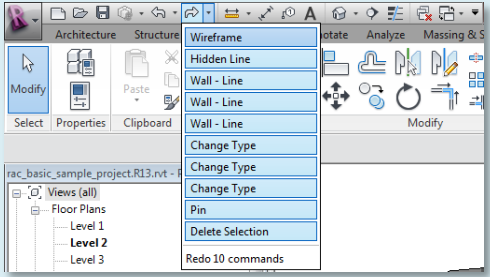


- New, Open, Save
- Synchronize
- Undo, Redo
- measure

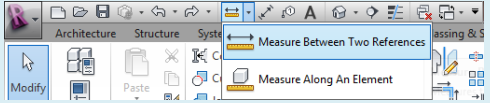
- aligned dimension
- tag by category
- text
- default 3D view

- section,
- thin lines
- close hidden windows
- switch windows

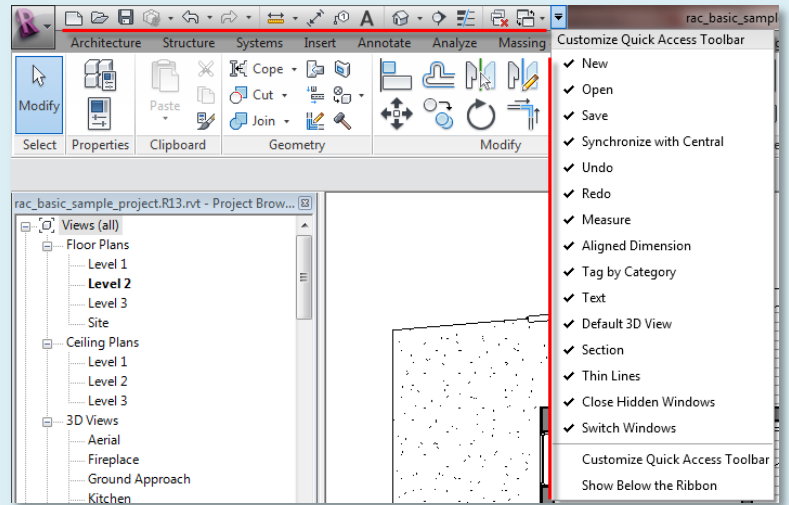
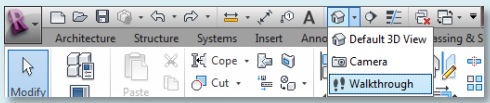
Redo



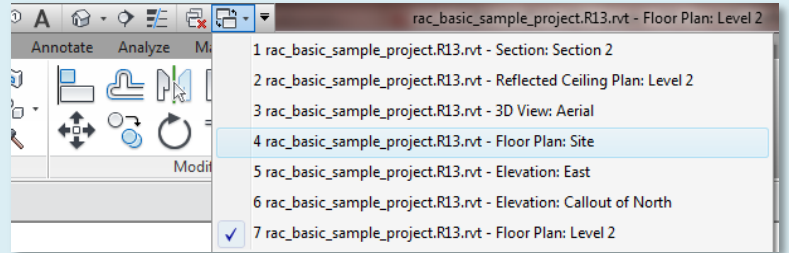
Measure



3D, Camera, Walkthrough



Close hidden windows & switch Windows



InfoCenter Toolbar

Day 02

Revit Interface

- Ribbons 1 2 3
- Quick Access
- Info Center
- View Control
- - Scale & Detail
- - Visual Styles
- - Sun Path
- - Cropping
- - Visibility Control
- - Hidden Elements

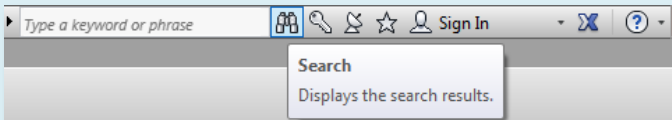
- Properties
Project Browser
R14 Tabbed View

- Scavenger Hunt
- Description
 - New Sheet
 - Add Views
 - Duplicate Views
 - Stair Sheet 1 2 3
 - Plot to PDF

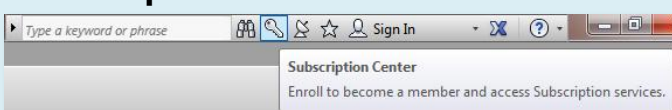
Wrap Up

Revit Introduction

Search



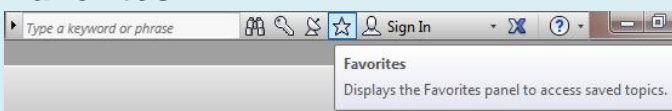
Subscription center



Communication Center



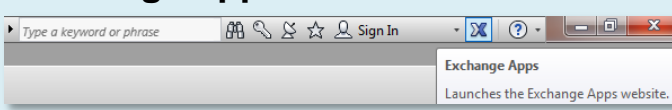
Favorites



Autodesk 360



Exchange Apps



• Search:

<http://wikihelp.autodesk.com/search?q=>
Search on Autodesk wiki site

• Subscription Center:

Access to subscription service benefits

• Communication Center:

Access to RSS feeds on software issues

• Favorites:

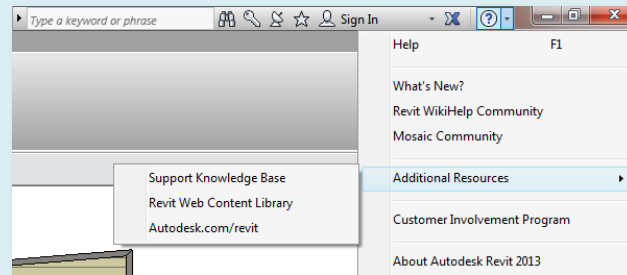
Add search results to your favorites

• Autodesk 360

Cloud centric storage and computing solution that provides each user with 3gb of free storage.

• Exchange Apps:

<http://apps.exchange.autodesk.com/>
access to Revit add on applications



View Control Toolbar (scale and details)

Day 02

Revit Interface

- Ribbons 1 2 3
- Quick Access
- Info Center
- **View Control**
- - **Scale & Detail**
- - Visual Styles
- - Sun Path
- - Cropping
- - Visibility Control
- - Hidden Elements

Properties
Project Browser
R14 Tabbed View

Scavenger Hunt

- Description
- New Sheet
- Add Views
- Duplicate Views
- Stair Sheet 1 2 3
- Plot to PDF

Wrap Up

Revit Introduction

Set View Scale

Custom...
12" = 1'-0"
6" = 1'-0"
3" = 1'-0"
1 1/2" = 1'-0"
1" = 1'-0"
3/4" = 1'-0"
1/2" = 1'-0"
3/8" = 1'-0"
1/4" = 1'-0"
3/16" = 1'-0"
1/8" = 1'-0"
1" = 10'-0"
3/32" = 1'-0"
1/16" = 1'-0"
1" = 20'-0"
3/64" = 1'-0"
1" = 30'-0"
1/32" = 1'-0"
1" = 40'-0"
1" = 50'-0"
1" = 60'-0"
1/64" = 1'-0"
1" = 80'-0"
1" = 100'-0"
1" = 160'-0"
1" = 200'-0"
1" = 300'-0"
1" = 400'-0"
1/8" = 1'-0"

Annotations adjust to selected scale

1/4" = 1'-0"
1/8" = 1'-0"

Coarse, medium or fine detail

Coarse
Medium
Fine
1/8" = 1'-0"

Coarse

Coarse

Fine

Fine

View Control Toolbar (visual styles)

Day 02

Revit Interface

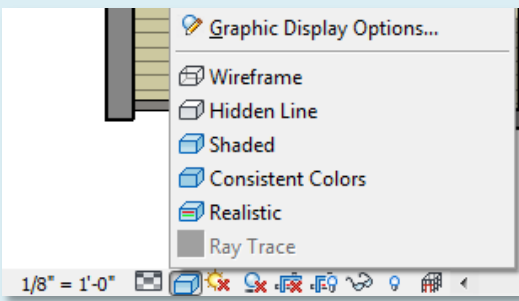
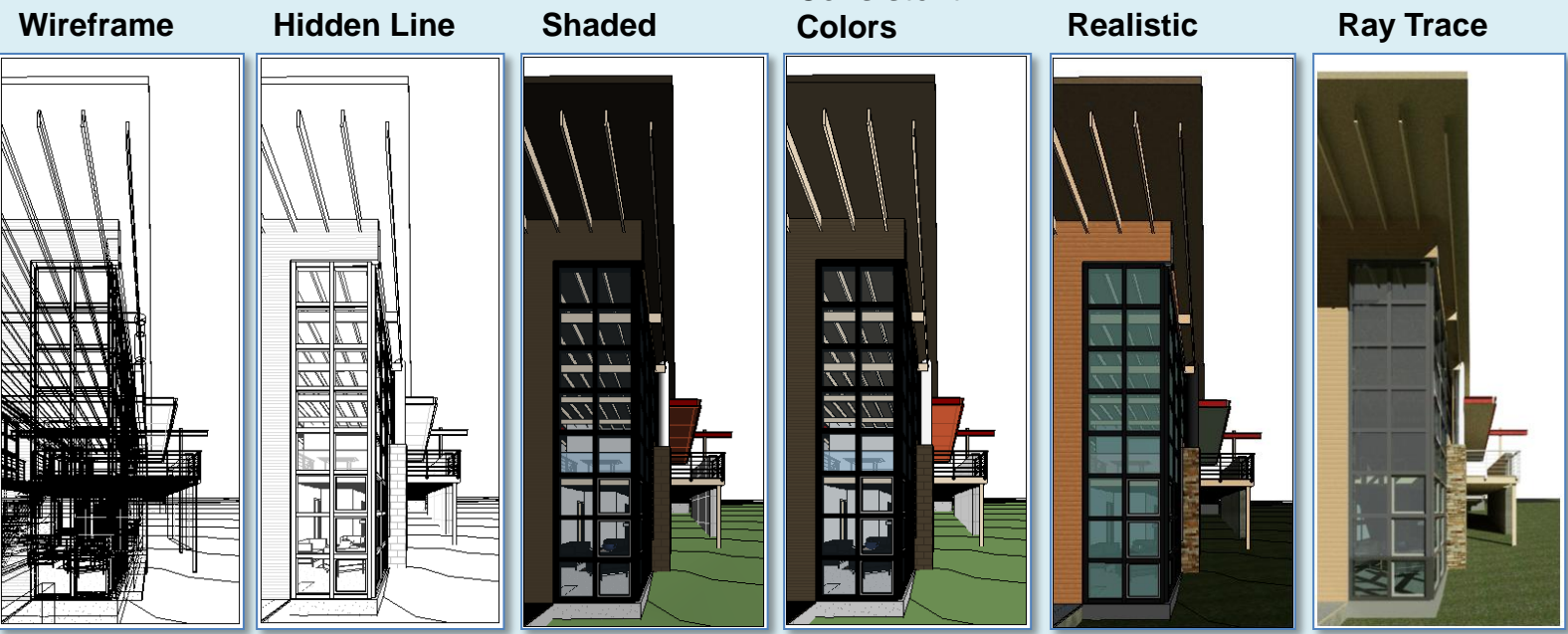
- Ribbons 1 2 3
- Quick Access
- Info Center
- **View Control**
- - Scale & Detail
- - **Visual Styles**
- - Sun Path
- - Cropping
- - Visibility Control
- - Hidden Elements

Properties
Project Browser
R14 Tabbed View

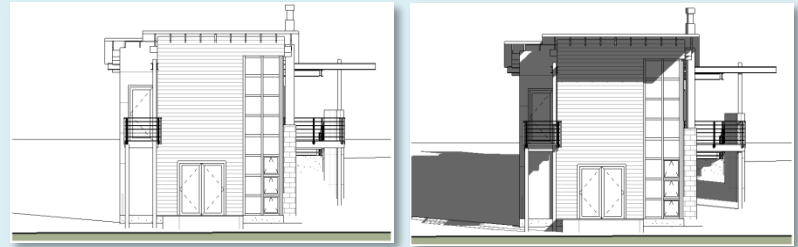
- Scavenger Hunt
- Description
 - New Sheet
 - Add Views
 - Duplicate Views
 - Stair Sheet 1 2 3
 - Plot to PDF

Wrap Up

Revit Introduction



As you increase detail you slow display



Shadows off / on

View Control Toolbar (sun path)

Day 02

Revit Interface

- Ribbons 1 2 3
- Quick Access
- Info Center
- **View Control**
- - Scale & Detail
- - Visual Styles
- - **Sun Path**
- - Cropping
- - Visibility Control
- - Hidden Elements

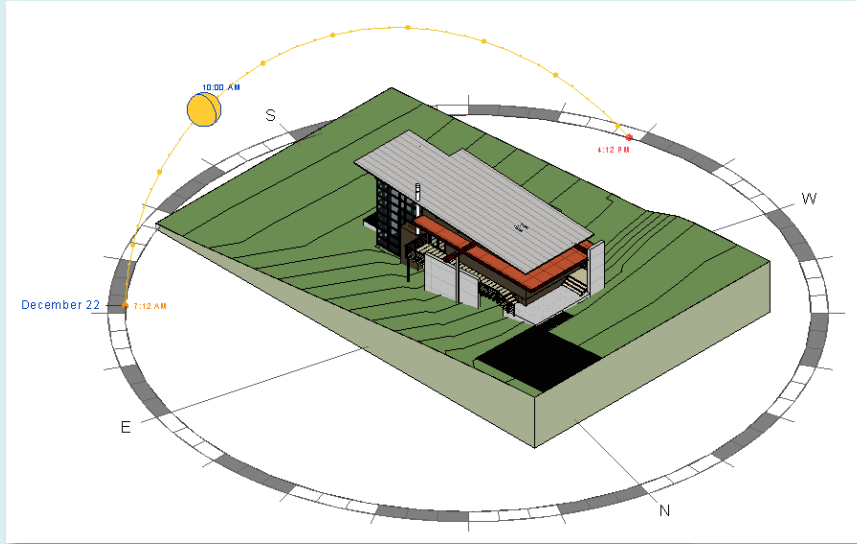
Properties
Project Browser
R14 Tabbed View

Scavenger Hunt

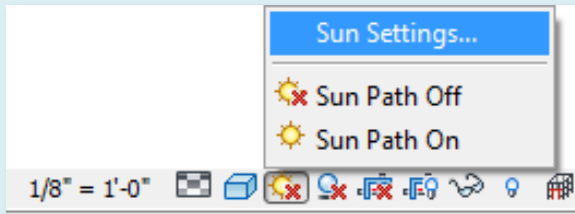
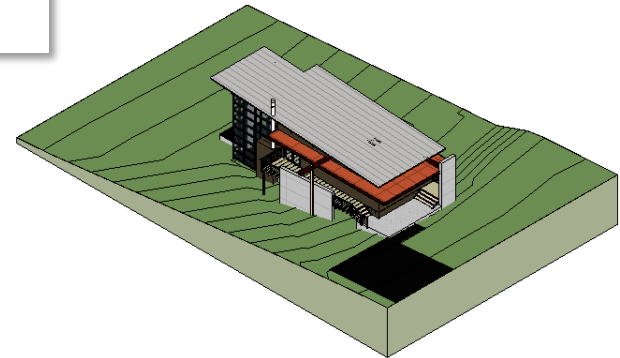
- Description
- New Sheet
- Add Views
- Duplicate Views
- Stair Sheet 1 2 3
- Plot to PDF

Wrap Up

Revit Introduction



Turn Sun Path On & Off



View Control Toolbar (cropping)

Day 02

Revit Interface

- Ribbons 1 2 3
- Quick Access
- Info Center
- **View Control**
- - Scale & Detail
- - Visual Styles
- - Sun Path
- - **Cropping**
- - Visibility Control
- - Hidden Elements

Properties
Project Browser
R14 Tabbed View

Scavenger Hunt

- Description
- New Sheet
- Add Views
- Duplicate Views
- Stair Sheet 1 2 3
- Plot to PDF

Wrap Up

Revit Introduction

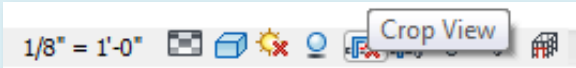
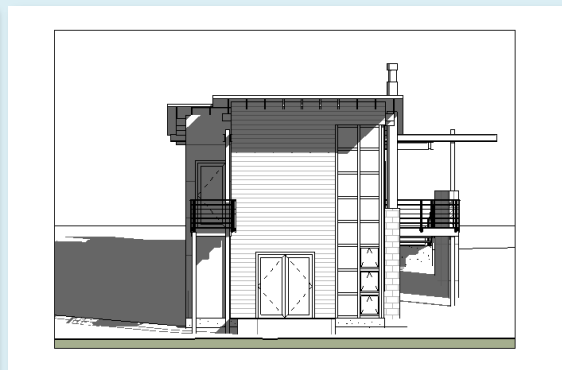
View with Cropping Off



View with Cropping On



Crop Region On



View Control Toolbar (visibility control)

Day 02

Revit Interface

- Ribbons 1 2 3
- Quick Access
- Info Center
- **View Control**
- - Scale & Detail
- - Visual Styles
- - Sun Path
- - Cropping
- - **Visibility Control**
- - Hidden Elements

Properties
Project Browser
R14 Tabbed View

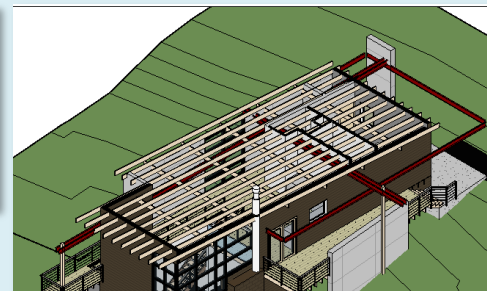
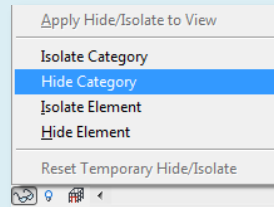
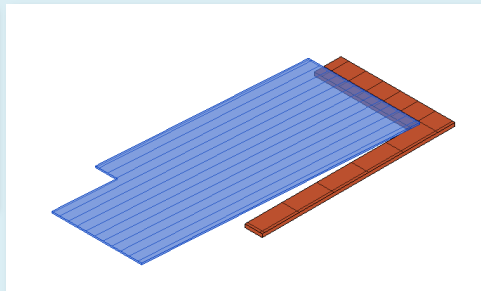
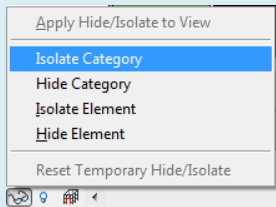
Scavenger Hunt

- Description
- New Sheet
- Add Views
- Duplicate Views
- Stair Sheet 1 2 3
- Plot to PDF

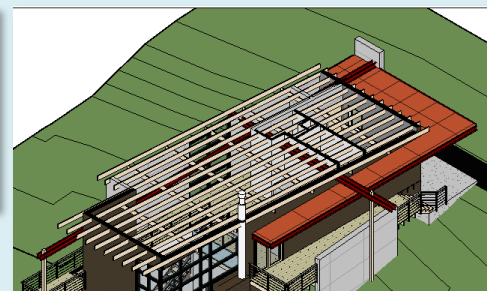
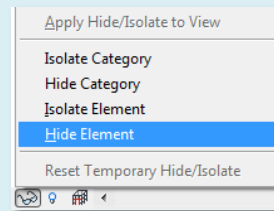
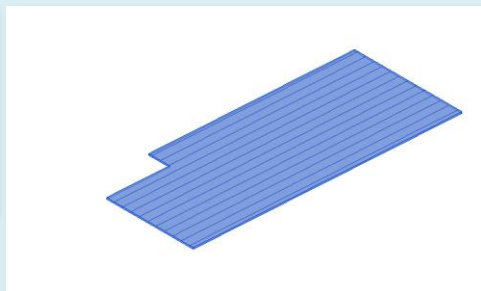
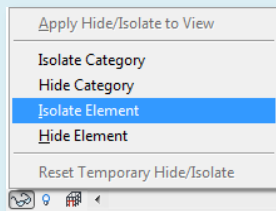
Wrap Up

Revit Introduction

Isolate Category



Isolate Element



View Control Toolbar (hidden elements)

Day 02

Revit Interface

- Ribbons 1 2 3
- Quick Access
- Info Center
- **View Control**
 - - Scale & Detail
 - - Visual Styles
 - - Sun Path
 - - Cropping
 - - Visibility Control
 - - **Hidden Elements**

Properties
Project Browser
R14 Tabbed View

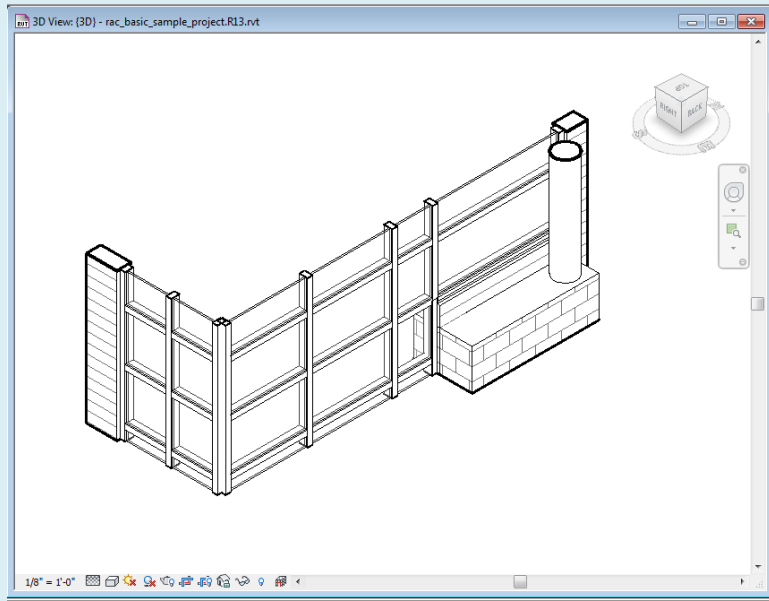
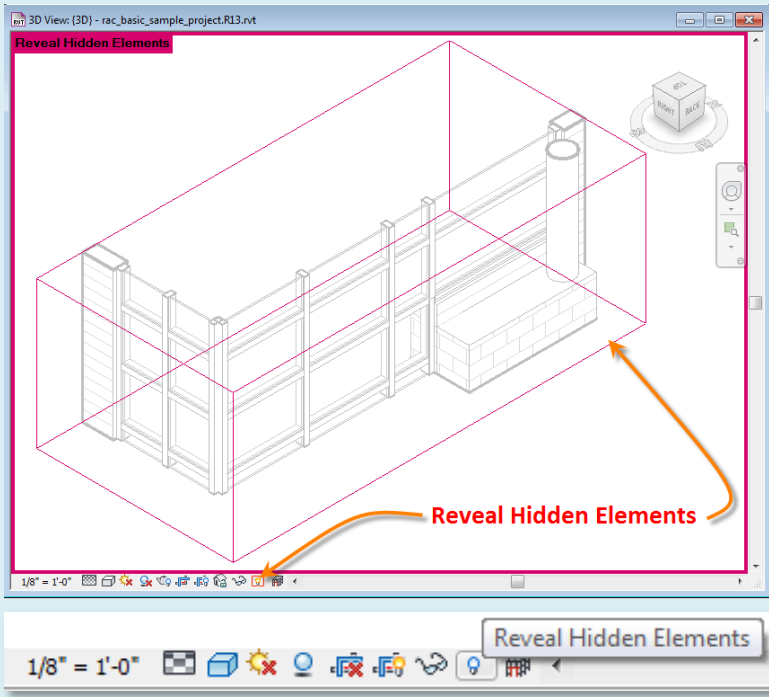
Scavenger Hunt

- Description
- New Sheet
- Add Views
- Duplicate Views
- Stair Sheet 1 2 3
- Plot to PDF

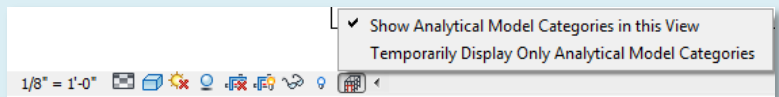
Wrap Up

Revit Introduction

Reveal Hidden Elements



Show Analytical Model Categories



Properties (of views or model objects)

Day 02

- Revit Interface
- Ribbons 1 2 3
 - Quick Access
 - Info Center
 - View Control
 - - Scale & Detail
 - - Visual Styles
 - - Sun Path
 - - Cropping
 - - Visibility Control
 - - Hidden Elements

- Properties
- Project Browser
- R14 Tabbed View

- Scavenger Hunt
- Description
 - New Sheet
 - Add Views
 - Duplicate Views
 - Stair Sheet 1 2 3
 - Plot to PDF

Wrap Up

Revit Introduction

Floor Plan View

Properties

Floor Plan

Floor Plan: Level 2 Edit Type

Graphics

View Scale	1/8" = 1'-0"
Scale Value 1:	96
Display Model	Normal
Detail Level	Medium
Parts Visibility	Show Original
Visibility/Grap...	Edit...
Graphic Displ...	Edit...
Underlay	None
Underlay Ori...	Plan
Orientation	Project North
Wall Join Disp...	Clean all wa...
Discipline	Architectural
Color Scheme...	Background
Color Scheme	<none>
System Color ...	Edit...
Default Analy...	None
Sun Path	<input type="checkbox"/>

Identity Data

View Template	<None>
View Name	Level 2
Dependency	Independent
Title on Sheet	
Referencing S...	
Referencing D...	

Basic Wall

Properties

Basic Wall CORR

Walls (1) Edit Type

Constraints

Location Line	Wall Centerline
Base Constraint	T.O. Found
Base Offset	0' 0"
Base is Attached	<input type="checkbox"/>
Base Extension ...	0' 0"
Top Constraint	Up to level: L...
Unconnected H...	18' 0 137/256"
Top Offset	0' 0"
Top is Attached	<input checked="" type="checkbox"/>
Top Extension ...	0' 0"

Room Bounding

Related to Mass

Structural

Enable Analytic...	<input type="checkbox"/>
Structural Usage	Non-bearing

Dimensions

Length	55' 6"
Area	639.35 SF
Volume	461.10 CF

Identity Data

Comments	
Mark	
Phasing	

Double-Glass Window

Properties

Double-Glass 1 1800 x 2100

Doors (1) Edit Type

Constraints

Level	Level 2
Sill Height	0' 0"

Construction

Frame Type	
Materials and Fin...	
Frame Material	
Finish	

Identity Data

Comments	
Mark	4

Phasing

Phase Created	New Constru...
Phase Demolish...	None

Other

Head Height	6' 10 173/256"
-------------	----------------

Stair with open treads

Properties

Stair open treads

Stairs (1) Edit Type

Constraints

Base Level	Level 1
Base Offset	0' 0"
Top Level	Level 2
Top Offset	0' 0"
Multistory Top ...	None

Graphics

Up text	UP
Down text	DN
Up label	<input checked="" type="checkbox"/>
Up arrow	<input checked="" type="checkbox"/>
Down label	<input checked="" type="checkbox"/>
Down arrow	<input checked="" type="checkbox"/>
Show Up arrow ...	<input type="checkbox"/>

Dimensions

Width	3' 0"
Desired Numbe...	18
Actual Number ...	18
Actual Riser Hei...	0' 6 9/16"
Actual Tread De...	0' 11"

Identity Data

Comments	
Mark	
Phasing	

Project Browser

Day 02

Revit Interface

- Ribbons 1 2 3
- Quick Access
- Info Center
- View Control
- - Scale & Detail
- - Visual Styles
- - Sun Path
- - Cropping
- - Visibility Control
- - Hidden Elements

Properties

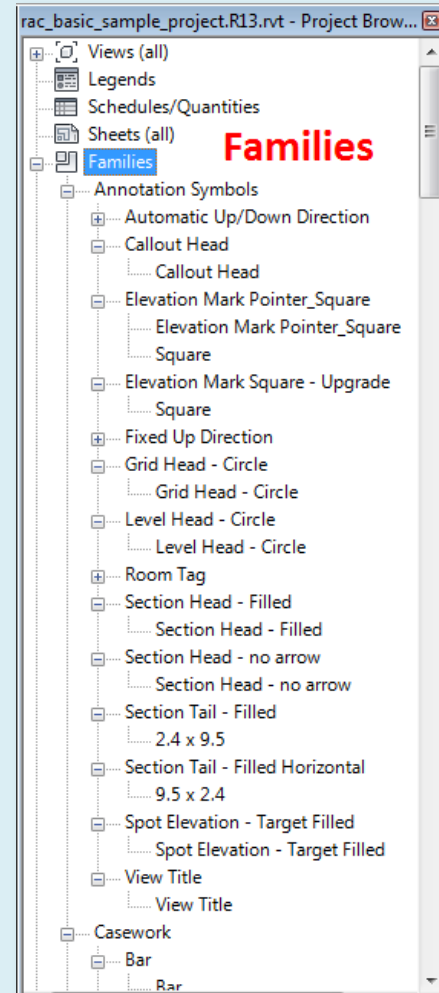
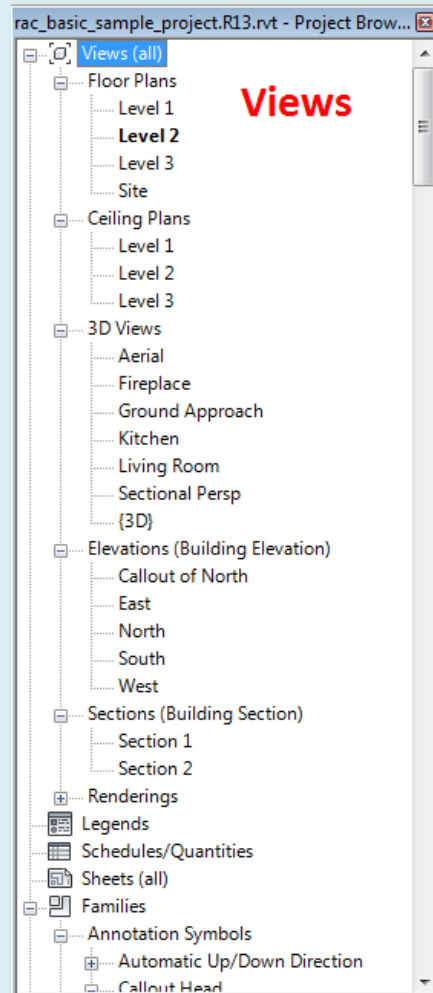
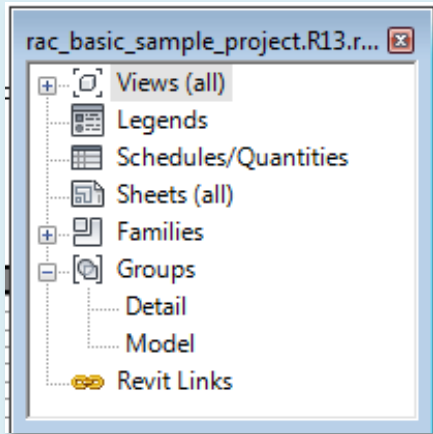
Project Browser R14 Tabbed View

Scavenger Hunt

- Description
- New Sheet
- Add Views
- Duplicate Views
- Stair Sheet 1 2 3
- Plot to PDF

Wrap Up

Revit Introduction



- **Views (all)**
- **Legends**
- **Schedules/Quantities**
- **Sheets (all)**
- **Families**
- **Groups**
- **Revit Links**

Properties/Project Browser Tabbed View

Day 02

- Revit Interface
- Ribbons 1 2 3
 - Quick Access
 - Info Center
 - View Control
 - - Scale & Detail
 - - Visual Styles
 - - Sun Path
 - - Cropping
 - - Visibility Control
 - - Hidden Elements

Properties Project Browser R14 Tabbed View

- Scavenger Hunt
- Description
 - New Sheet
 - Add Views
 - Duplicate Views
 - Stair Sheet 1 2 3
 - Plot to PDF

Wrap Up

Revit Introduction

Drag apart

- Drag apart so properties is floating
- Drag it back until rectangle highlights

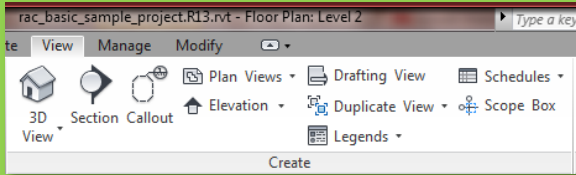
Drag until rectangle highlights then release

Drag back

Project Browser

Scavenger Hunt

RAC_Basic_Sample_Project.rvt



To describe the sample model identify and create as many unique views as you can find. (the scavenger hunt)

Group related views and place them on a sheet at the appropriate scale. A unique view is one that adds to the story and is not redundant.

Student Learning Objectives:

Upon successful completion of this assignment, the student will:

- Correctly Name a Revit File according to class standards
- "Tell a Story" through drawings by selecting appropriate views of a Revit Model.
- Logically group together related views and format these on a sheet in Revit.
- Understand the appropriate scale for various drawing types.

Assessment:

To evaluate the student's achievement of the learning objectives, the professor will do the following:

- Evaluate the file for proper naming convention.
- Evaluate the number of stories told by the student.
- Evaluate the quality and completeness of the story told by the student.
- Evaluate the quality and formatting of view laid out on sheets in Revit.
- Evaluate the appropriate use of scale.
- Assess assignment for deadline submission / lateness
- Commend the student for initiative beyond the given the assignment.

Day 02

Revit Interface

- Ribbons 1 2 3
- Quick Access
- Info Center
- View Control
 - - Scale & Detail
 - - Visual Styles
 - - Sun Path
 - - Cropping
 - - Visibility Control
 - - Hidden Elements

Properties

- Project Browser
- R14 Tabbed View

Scavenger Hunt

- Description
- New Sheet
- Add Views
- Duplicate Views
- Stair Sheet 1 2 3
- Plot to PDF

Wrap Up

Revit Introduction

Sheet Layout (create new sheet)

Day 02

- Revit Interface
 - Ribbons 1 2 3
 - Quick Access
 - Info Center
 - View Control
 - Scale & Detail
 - Visual Styles
 - Sun Path
 - Cropping
 - Visibility Control
 - Hidden Elements

- Properties
- Project Browser
- R14 Tabbed View

Scavenger Hunt

- Description
- New Sheet
- Add Views
- Duplicate Views
- Stair Sheet 1 2 3
- Plot to PDF

Wrap Up

Revit Introduction

The image illustrates the workflow for creating a new sheet in Revit. It consists of several overlapping screenshots:

- Project Browser:** Shows the 'Sheets' folder expanded, with the 'New Sheet...' option selected.
- Load Family Dialog:** Shows the 'Titleblocks' folder selected. A table lists available titleblock families:

Name	Date modified	Type
A 8.5 x 11 Vertical.rfa	1/21/2012 3:41 AM	RFA File
B 11 x 17 Horizontal.rfa	1/21/2012 3:41 AM	RFA File
C 17 x 22 Horizontal.rfa	1/21/2012 3:41 AM	RFA File
D 22 x 34 Horizontal.rfa	1/21/2012 3:41 AM	RFA File
E 34 x 44 Horizontal.rfa	1/21/2012 3:41 AM	RFA File
E1 30 x 42 Horizontal.rfa	1/21/2012 3:41 AM	RFA File

The 'Preview' window shows a sheet with a red '22 x 34' label.

- New Sheet Dialog (Step 1):** Shows 'None' selected under 'Select titleblocks:'. An orange arrow points to the 'Load...' button with the word 'Load' written next to it.
- New Sheet Dialog (Step 2):** Shows 'D 22 x 34 Horizontal' selected under 'Select titleblocks:'.
- New Sheet Dialog (Step 3):** Shows 'New' selected under 'Select placeholder sheets:'.
- Final Sheet:** Shows the completed sheet layout with the titleblock and a grid.

Blue arrows indicate the flow from the Project Browser to the 'Load Family' dialog, then to the 'New Sheet' dialog, and finally to the final sheet layout.

Sheet Layout (drag named views onto sheet)

Day 02

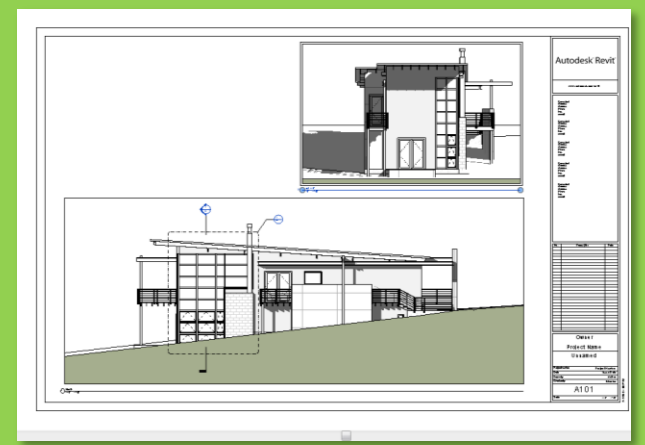
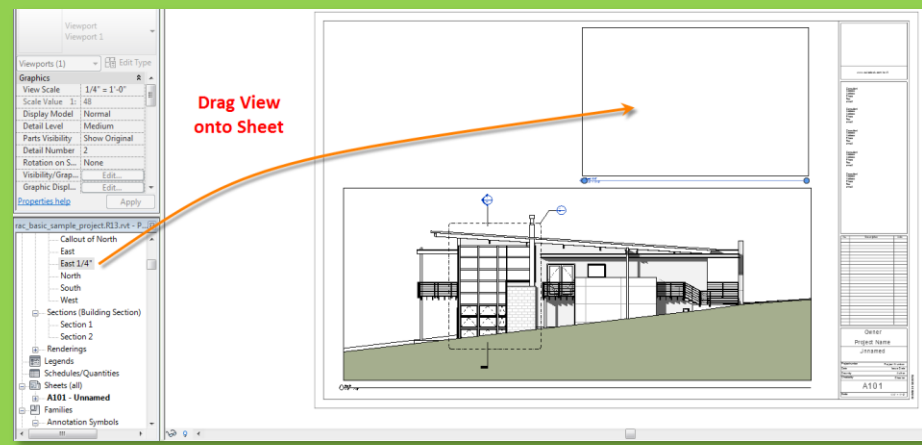
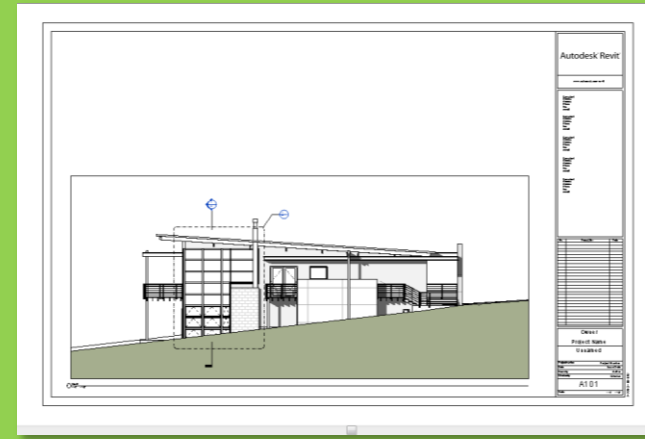
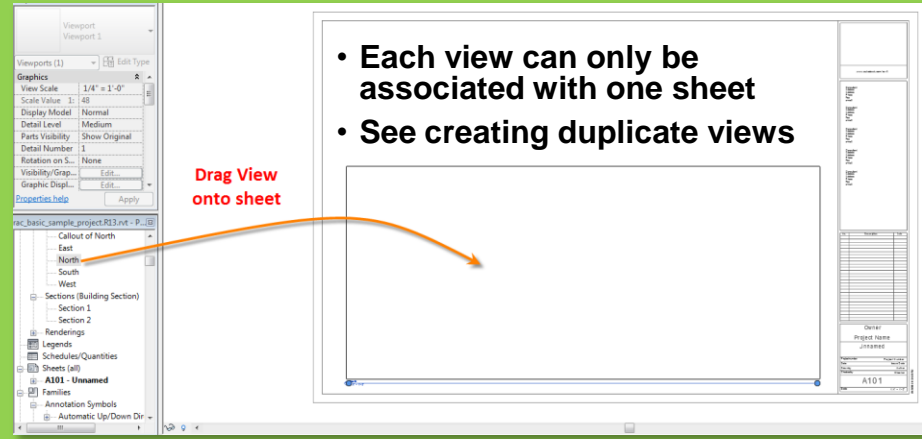
- Revit Interface
 - Ribbons 1 2 3
 - Quick Access
 - Info Center
 - View Control
 - Scale & Detail
 - Visual Styles
 - Sun Path
 - Cropping
 - Visibility Control
 - Hidden Elements

- Properties
- Project Browser
- R14 Tabbed View

- Scavenger Hunt
 - Description
 - New Sheet
 - Add Views
 - Duplicate Views
 - Stair Sheet 1 2 3
 - Plot to PDF

Wrap Up

Revit Introduction



Duplicating Views

Day 02

Revit Interface

- Ribbons 1 2 3
- Quick Access
- Info Center
- View Control
- - Scale & Detail
- - Visual Styles
- - Sun Path
- - Cropping
- - Visibility Control
- - Hidden Elements

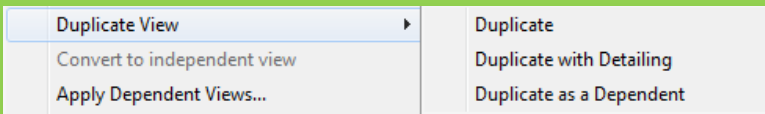
Properties Project Browser R14 Tabbed View

Scavenger Hunt

- Description
- New Sheet
- Add Views
- Duplicate Views
- Stair Sheet 1 2 3
- Plot to PDF

Wrap Up

Revit Introduction



• Original View:



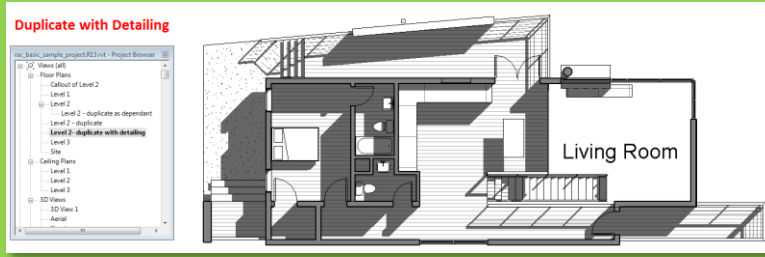
- Duplicate as dependant:
- Identical in scale and annotation but can be cropped



- Duplicate:
- Annotation not copied and view can be set to a different scale than original



- Duplicate with detailing:
- Annotation is copied but can be edited independently & scale can be different



Scavenger Hunt (Stair Sheet – Step 1)

Day 02

Revit Interface

- Ribbons 1 2 3
- Quick Access
- Info Center
- View Control
- - Scale & Detail
- - Visual Styles
- - Sun Path
- - Cropping
- - Visibility Control
- - Hidden Elements

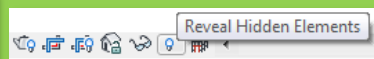
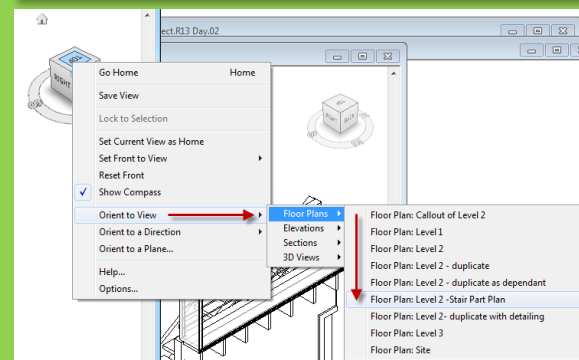
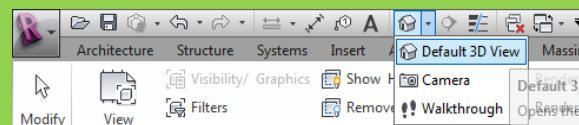
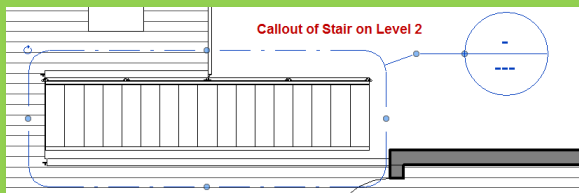
Properties Project Browser R14 Tabbed View

Scavenger Hunt

- Description
- New Sheet
- Add Views
- Duplicate Views
- **Stair Sheet 1 2 3**
- Plot to PDF

Wrap Up

Revit Introduction

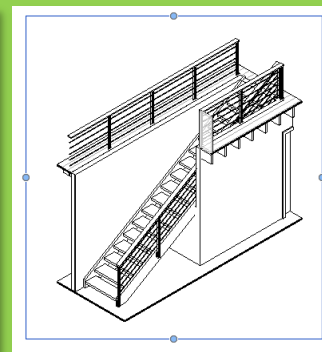
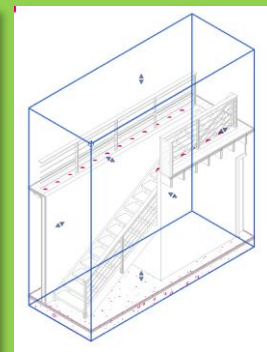
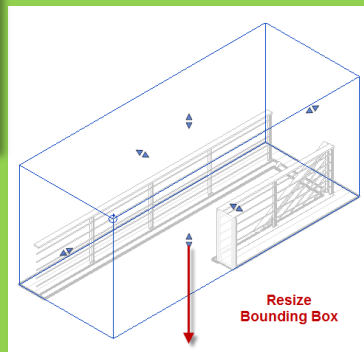


Stair Callout:

1. Callout of Stair on Level 2 (scale 1/4")
2. Go to View
3. Adjust Scale to 1/2" = 1'-0"

Isometric Detail

1. Create Isometric View
2. Default 3D View > Viewcube > Orient to View > Stair Callout
3. View Cube > Home
4. Reveal Hidden Elements & Resize
5. Set Scale to 1/2" to match the plan detail
6. Duplicate View and Name it "Stair Isometric"
7. Adjust Crop region of view



Scavenger Hunt (Stair Sheet – Step 2)

Day 02

Revit Interface

- Ribbons 1 2 3
- Quick Access
- Info Center
- View Control
- - Scale & Detail
- - Visual Styles
- - Sun Path
- - Cropping
- - Visibility Control
- - Hidden Elements

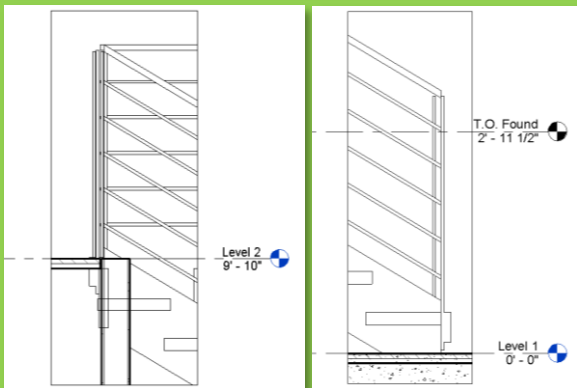
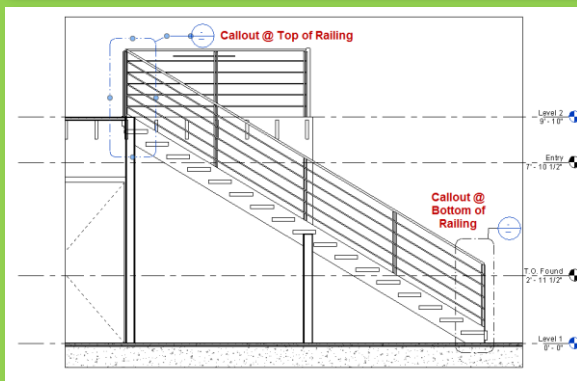
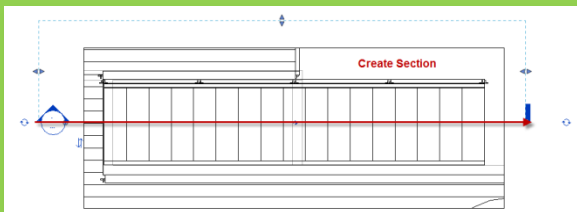
Properties Project Browser R14 Tabbed View

Scavenger Hunt

- Description
- New Sheet
- Add Views
- Duplicate Views
- **Stair Sheet 1 2 3**
- Plot to PDF

Wrap Up

Revit Introduction



Stair Section:

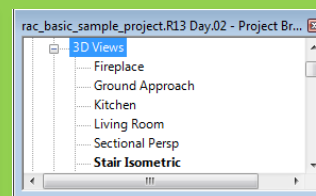
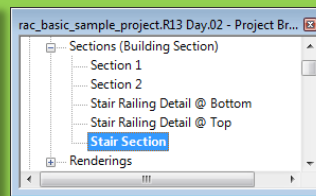
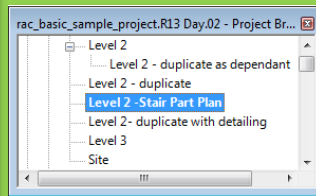
1. Section on stair callout (scale 1/2")
2. Go to View
3. Adjust Crop Regions of View

Section / Elevation Callouts

1. Callout of "Stair Railing Detail @ Top"
Scale will be set to 1" = 1'-0"
2. Callout of "Stair Railing Detail @ Bottom"
Scale will be set to 1" = 1'-0"

Notes

1. Names of Views in project Browser
 - Level 2 – Stair Part Plan
 - Stair Section
 - Stair Railing Detail @ Top
 - Stair Railing Detail @ Bottom
 - Stair Isometric



Scavenger Hunt (Stair Sheet – Step 3)

Day 02

Revit Interface

- Ribbons 1 2 3
- Quick Access
- Info Center
- View Control
- - Scale & Detail
- - Visual Styles
- - Sun Path
- - Cropping
- - Visibility Control
- - Hidden Elements

Properties

- Project Browser
- R14 Tabbed View

Scavenger Hunt

- Description
- New Sheet
- Add Views
- Duplicate Views
- **Stair Sheet 1 2 3**
- Plot to PDF

Wrap Up

Revit Introduction

Autodesk Revit

Project Name: Stair Details

View Name	View Type	View Scale
Level 2 - Stair Plan	Plan	1/8" = 1'-0"
Stair Section	Section	1/4" = 1'-0"
Stair Railing Detail @ Top	Detail	1/2" = 1'-0"
Stair Railing Detail @ Bottom	Detail	1/2" = 1'-0"

Drag Stair Views on to Sheet

- Level 2 - Stair Plan
- Stair Section
- Stair Railing Detail @ Top
- Stair Railing Detail @ Bottom
- Stair Isometric

Plot to PDF

Day 02

Revit Interface

- Ribbons 1 2 3
- Quick Access
- Info Center
- View Control
- - Scale & Detail
- - Visual Styles
- - Sun Path
- - Cropping
- - Visibility Control
- - Hidden Elements

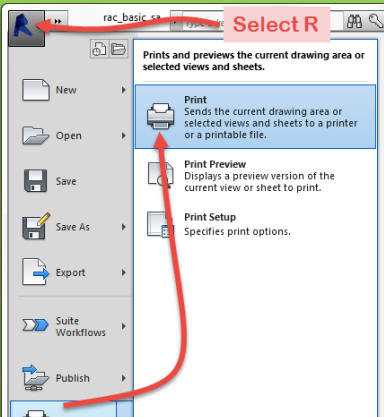
Properties Project Browser R14 Tabbed View

Scavenger Hunt

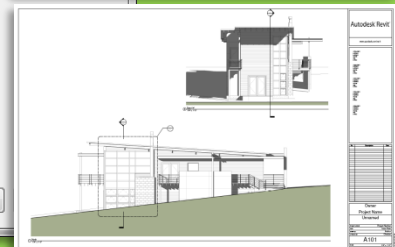
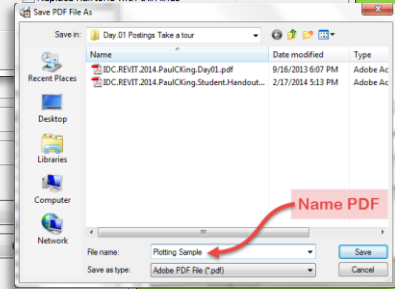
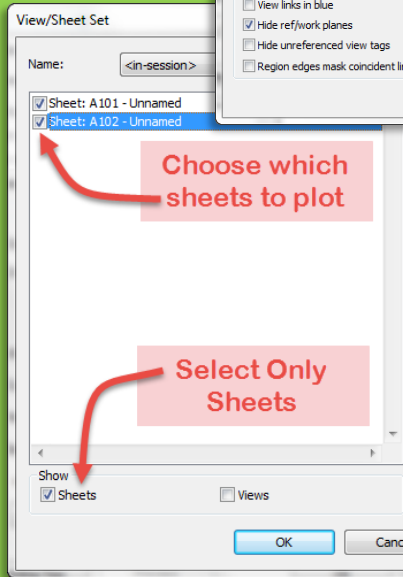
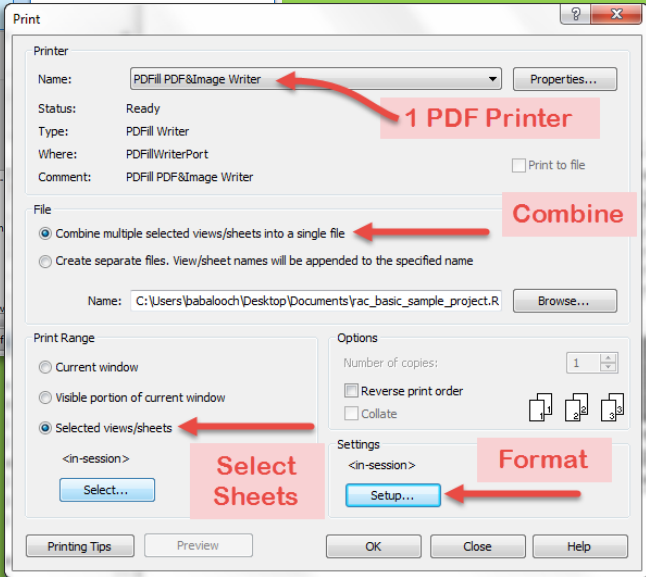
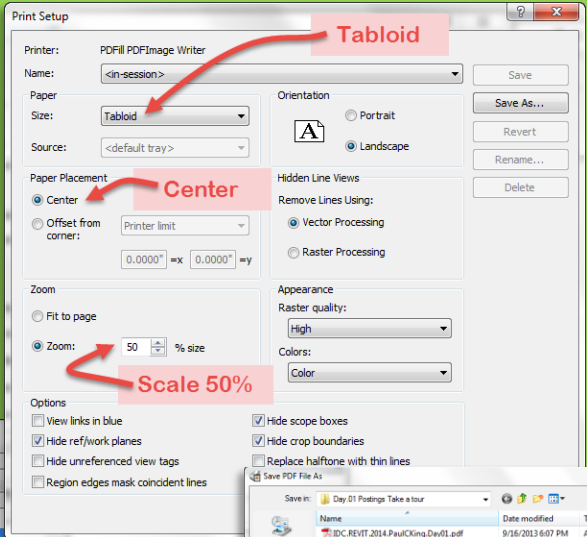
- Description
- New Sheet
- Add Views
- Duplicate Views
- Stair Sheet 1 2 3
- Plot to PDF

Wrap Up

Revit Introduction



- Print
- Select a PDF Printer
- Select Multiple Sheets
- Combine into single PDF
- 22 x 34 to Tabloid
- Center and Scale to 50%



Day 2 - Wrap Up

Day 02

Revit Interface

- Ribbons 1 2 3
- Quick Access
- Info Center
- View Control
- - Scale & Detail
- - Visual Styles
- - Sun Path
- - Cropping
- - Visibility Control
- - Hidden Elements

Properties

- Project Browser
- R14 Tabbed View

Scavenger Hunt

- Description
- New Sheet
- Add Views
- Duplicate Views
- Stair Sheet 1 2 3
- Plot to PDF

Wrap Up

Revit Introduction

- Review of IDC Checklist & Syllabus
- Interface
 - Ribbon
 - Quick Access Toolbar
 - InfoCenter Toolbar
 - View Control Bar
 - Status Bar
- Properties
 - Of a view
 - Of an object
- Project Browser
 - Views (all)
 - Legends
 - Schedules / Quantities
 - Sheets
 - Families
- Finishing the Scavenger Hunt – In Class
- Creation of Titleblock
 - Loading new families
 - 22 x 34 and 11 x 17
- Duplicating Views
 - Duplicate
 - Duplicate as dependent
 - Duplicate with detailing
- Starting a new project (practice project)
 - Levels and Grids
 - Walls, Doors and Windows
 - Modify a family (door & Window)
- <http://seek.autodesk.com/>