

FIT Museum Exhibition

Brittney Crespo

Buf 4900

Dr. Adomatis

New York City College of Technology

Abstract

In this paper I will cover a virtual visit to the Museum of Fashion Institute of Technology. I will speak about two different exhibitions and their elements. The first exhibition I will cover will be the Ballerina Fashion's Modern Muse. The second one will be Power Mode Force of Fashion. I will cover elements of design for the first exhibition. In the second exhibition I will go over color.

The piece I will be reviewing today will be a Balenciaga licensed by Hattie Carnegie gown (exhibitions.fitnyc.edu, 2020). Cristobal Balenciaga was a well known Spanish designer mastering in the construction of the garment. Hattie Carnegie was well known for dressing women up in America and making them feel good but could not design for herself. The lovely garment was inspired by Royal Ballet's 1946 The Sleeping Beauty costume designed by Oliver Messel.

I specifically chose to write about this gown because I personally felt it was stunning and had a lot of great elements about it. One of the first amazing features that this gown shows, which is probably one of the first things that catches one's eye would be the shape. The eye-catching geometric shape of the top half of the gown or the corset style portion of it really shows off the skill and how constructed this gown is (exhibitions.fitnyc.edu, 2020). It is inviting you into this world of beautiful detail. The top part of the gown is sort of a triangular shape, strapless, and backless. The waistline is cinched which gives great proportions, especially for a woman. Following, I will move on to the texture of this garment. It has beautiful delicate embroidering in an ongoing circular pattern that remains consistent along the upper part of the dress. The elegant embroidering lays on this satin material that looks so soft and shines so beautifully. Moving along to the bottom half of the gown where the pink tulle stands out in a feminine way. The tulle, yes, will be a bit of a more rough material in comparison to the satin upper half of the gown.

However, once it is all placed together and styled like this on the garment it is an inviting puffy pillow.

As the title of this exhibition states *Ballerina Fashion's Modern Muse*, that these women ballerinas have come a long way throughout history and have made their mark. Referring to the quote "The assumption that a woman who comes out fighting has to hide in a man's suit has shattered" (E. Warren, U. Leyen, and M. Vestager). Is a powerful statement given by all three powerful women Elizabeth Warren, Ursula Von Der leyen, and Margethe Vestager who all hold high power political positions in their country. This quote is trying to say that a woman does not need to be represented in a man's image in order to be powerful and respected. You are still able to wear pink, lace, embroidering and all other things considered feminine and can still have a powerful voice and be powerful.

The second item of clothing I will be covering is going to be a Chanel classic tweed suit. Coco Chanel introduced this timeless suit to the world in 1953 after reopening her fashion house at the end of World War two(exhibitions.fitnyc.edu, 2020). Chanel was very wise and playful on what colors she used for this specific suite, how much of it was used, and when and where to use it. She's used a great deal of psychology while choosing her color pallet for this garment. The suit seems to be a light shade of grey with some tints of white in it. Grey is a neutral color that may be considered as a warm or cool color. According to color psychology grey is known to be a

sophisticated color (Adomtais,lecture,2020). Which is probably the hue grey was chosen as the base color of this suite.

Chanel included great details that have added a nice pop of color to the garment. On the jackets outside lining where the pockets sleeves and openings are. The colors are a gorgeous deep dark shade of blue and pop color of pink that sits closer to the red family. I would say that these two colors are complimentary colors. These colors are also included throughout the tweed in the garment blending in very nicely with that hue of grey for the main portion of the garment. Deep blue color represents cold, moody, and depressing. While the pink although this tint of pink sits closer to the red family as mentioned before represents sweet, pretty, and raw. While red represents powerful, loving, stimulating, and demanding. The color pallet for this garment is interesting. The suit was released after World War two, a time when a lot of countries had people in mourning or facing depression due to the war. The grey being the base representing the sophistication of women and a calm neutral color after a hard time. Then she adds the complementary colors. The deep blue represents the cold depressing mood after the war (Olesen,2019). However, she tries to respectfully brighten up the mood with the pink color being sweet, pretty, and raw.

Image 1



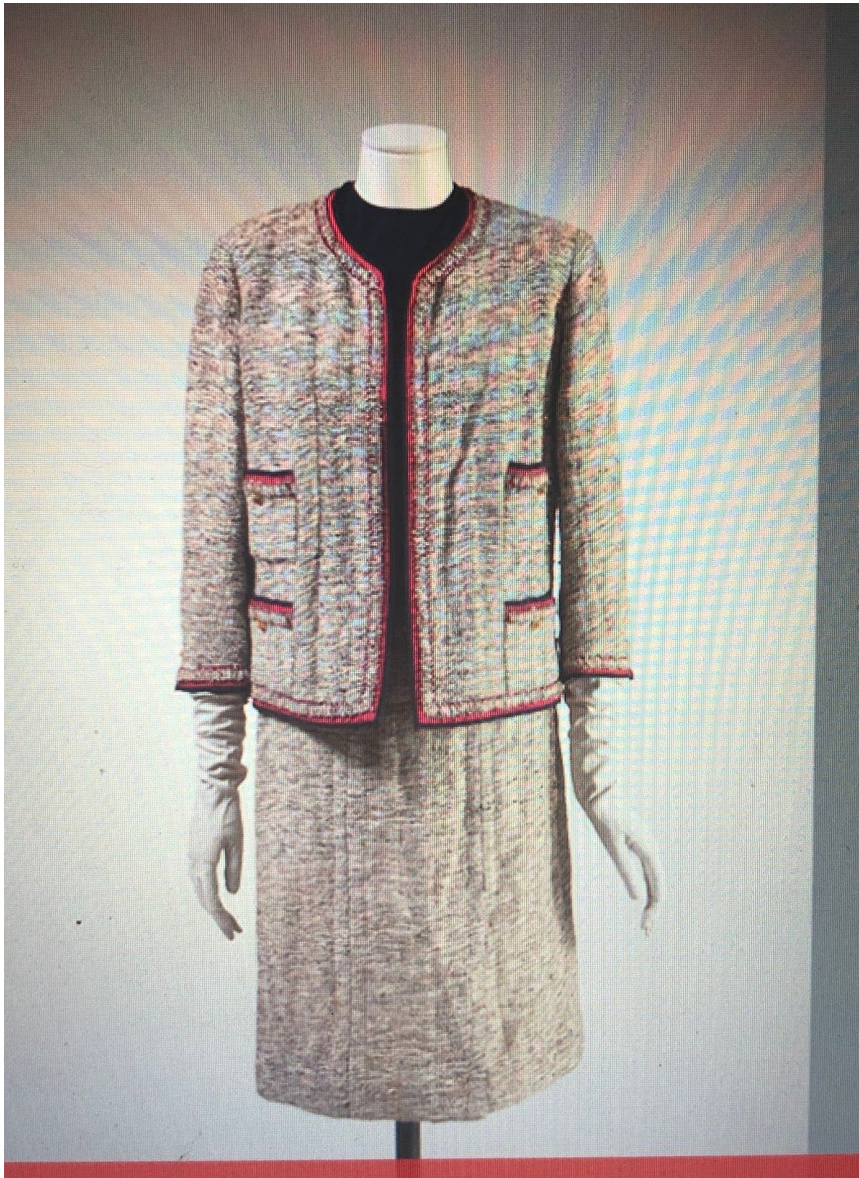
Balenciaga, Licensed by Hattie Carnegie

Pall pink tulle and embroidered satin gown

1950

The Museum at FIT

Image 2



Chanel Suit

1963-64

The Museum of FIT

References

(n.d.). Retrieved from <https://cfda.com/news/fashion-flashback-hattie-carnegie>

Color Meanings - All About Colors and Symbolism. (n.d.). Retrieved from  
<https://www.color-meanings.com/>

makART. (n.d.). Retrieved from <http://www.makart.com/resources/artclass/EPlist.html>