

# Intemporel

Anmol Kaur, Adia Titus, Mia  
Washington, and Jamilex Barzallo

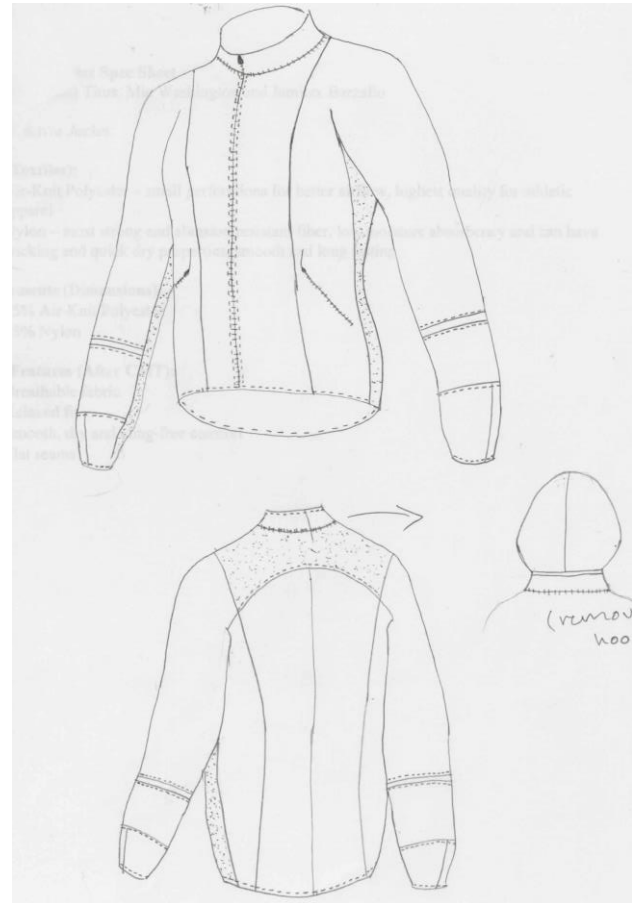
# What is Intemporel?

- Timeless
- It represents simple luxury without overcomplicating our designs
- It will remain relevant and to our customers' lifestyle

# About the Company

- Luxury fashion brand that caters to professional, career women that are fashion conscious
- Provide timeless pieces
- Venturing into athleisure market to compete with lifestyle brands like Lululemon and Gap Inc.'s Athleta

# Concept



# Specs

- Product: Active Jacket
- Fabric (Textiles):

Air-Knit Polyester- small perforations for air flow

Nylon- strong and abrasion resistant fiber that had wicking properties

- Measurements
- Size Medium- 26.5" Front; 29.5" back; 26" sleeve length

Thank You