

ARCH 1250 APPLIED ENVIRONMENTAL STUDIES

TOPOGRAPHY

TOPOSURFACE

NEW PROJECT

IMPORT DWG
FILE

CREATE
TOPOSURFACE

- IMPORT
INSTANCE
- SELECT
LAYER
- FINISH

EDIT
TOPOSURFACE

- MOVE
CONTROL
POINTS
- FINISH

Creating a TOPO Model Using Revit

Professor Paul C. King, RA, AIA, ARA
Assistant Professor

Creating a Revit Toposurface from an AutoCAD Drawing

Start a new Revit Project

Template File > Architectural

Save As > My New Site Model

TOPOSURFACE

NEW PROJECT

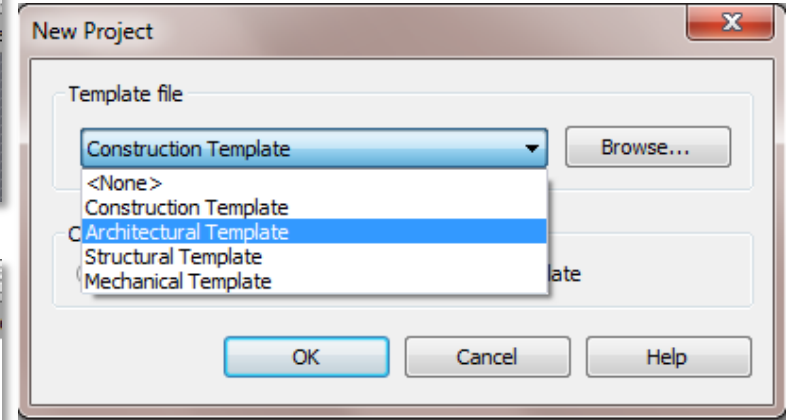
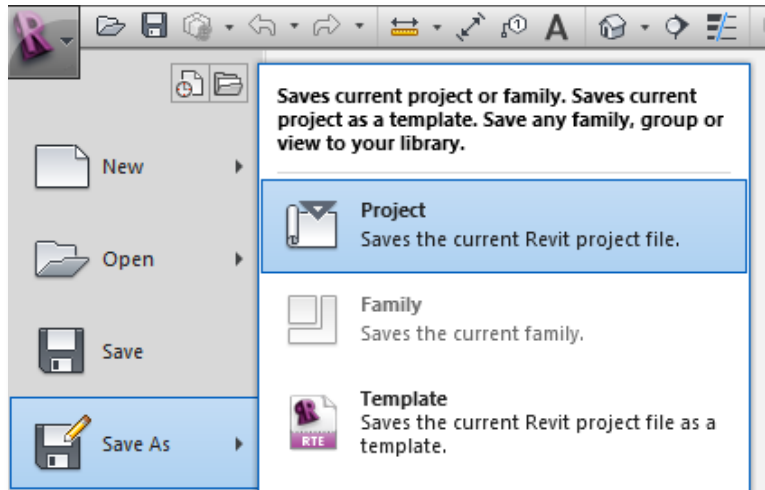
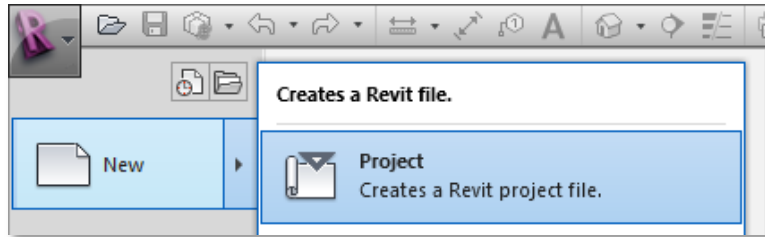
IMPORT DWG
FILE

CREATE
TOPOSURFACE

- IMPORT INSTANCE
- SELECT LAYER
- FINISH

EDIT
TOPOSURFACE

- MOVE CONTROL POINTS
- FINISH



Creating a Revit Toposurface from an AutoCAD Drawing

Import the AutoCAD Site Model
Project Browser > Go to Site Plan View
Insert > Import CAD > Select Site_Model.dwg

TOPOSURFACE

NEW PROJECT

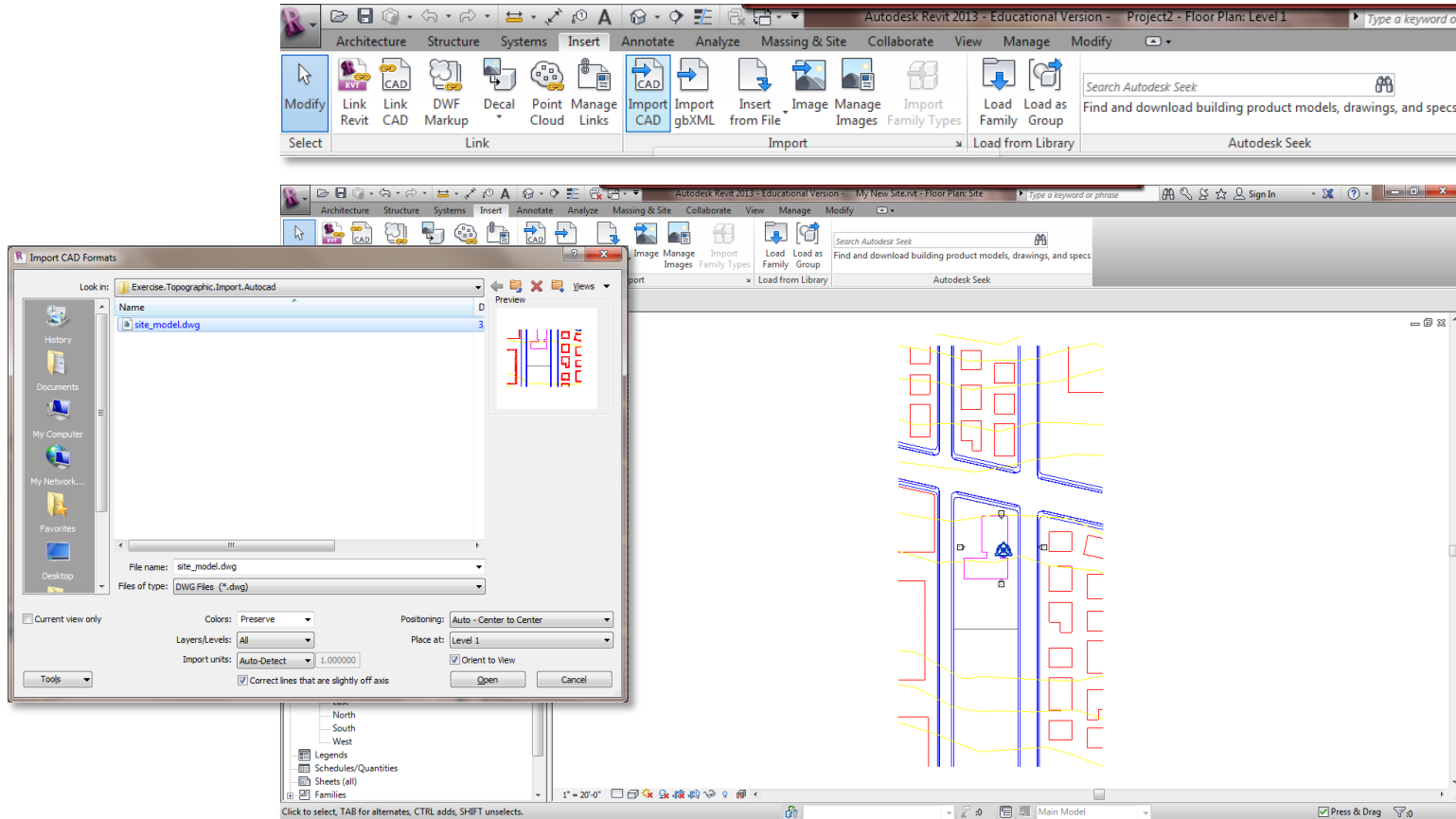
IMPORT DWG
FILE

CREATE
TOPOSURFACE

- IMPORT INSTANCE
- SELECT LAYER
- FINISH

EDIT
TOPOSURFACE

- MOVE CONTROL POINTS
- FINISH



Creating a Revit Toposurface from an AutoCAD Drawing

Create the Toposurface

Massing & Site > Toposurface

Create from Import > Select Import Instance (select the site model)

TOPOSURFACE

NEW PROJECT

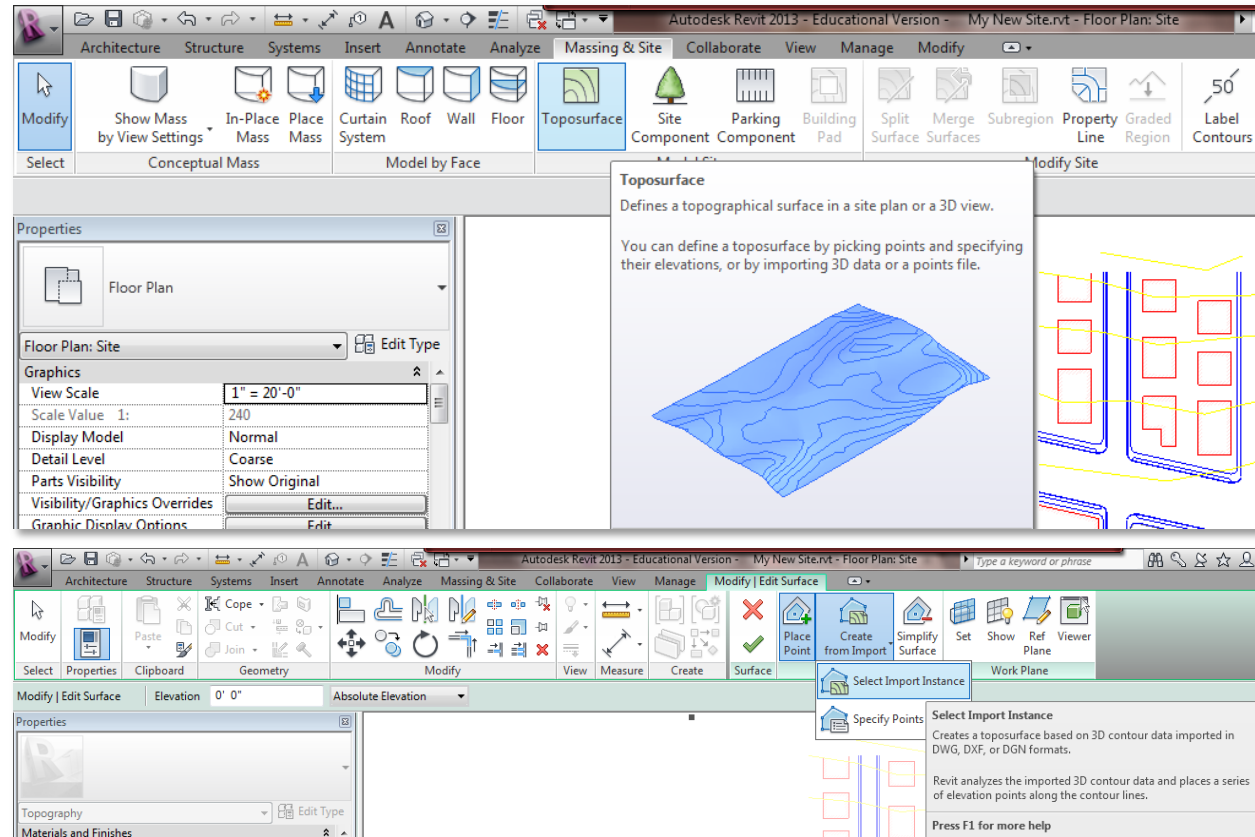
IMPORT DWG
FILE

CREATE
TOPOSURFACE

- IMPORT INSTANCE
- SELECT LAYER
- FINISH

EDIT
TOPOSURFACE

- MOVE CONTROL POINTS
- FINISH



Creating a Revit Toposurface from an AutoCAD Drawing

Add Points from Selected Layers

*Select the Topo Layer Only > Check None > Select C-TOPO-MAJR
Finish Surface*

TOPOSURFACE

NEW PROJECT

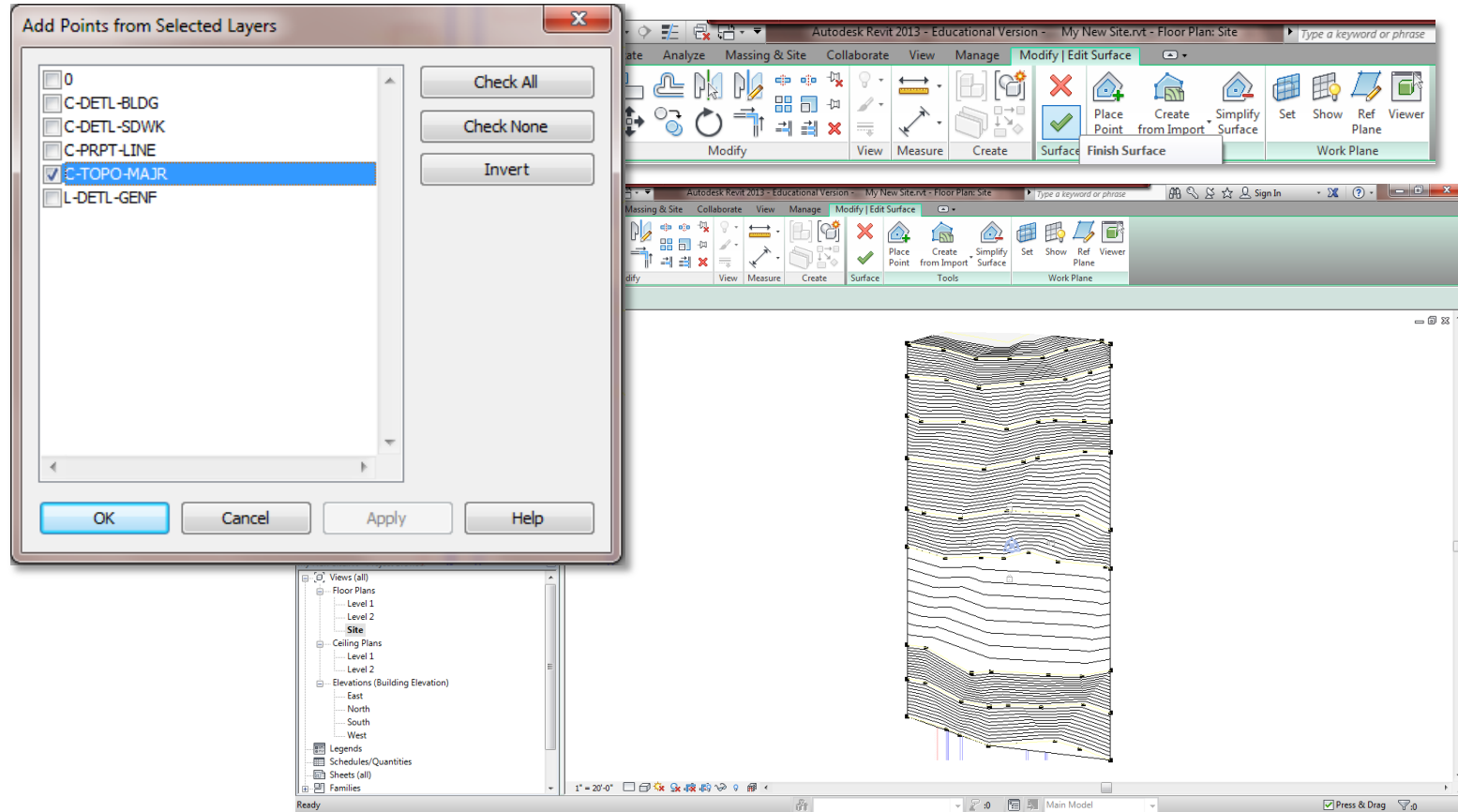
IMPORT DWG
FILE

CREATE
TOPOSURFACE

- IMPORT INSTANCE
- SELECT LAYER
- FINISH

EDIT
TOPOSURFACE

- MOVE CONTROL POINTS
- FINISH



Creating a Revit Toposurface from an AutoCAD Drawing

View the finished Toposurface

TOPOSURFACE

NEW PROJECT

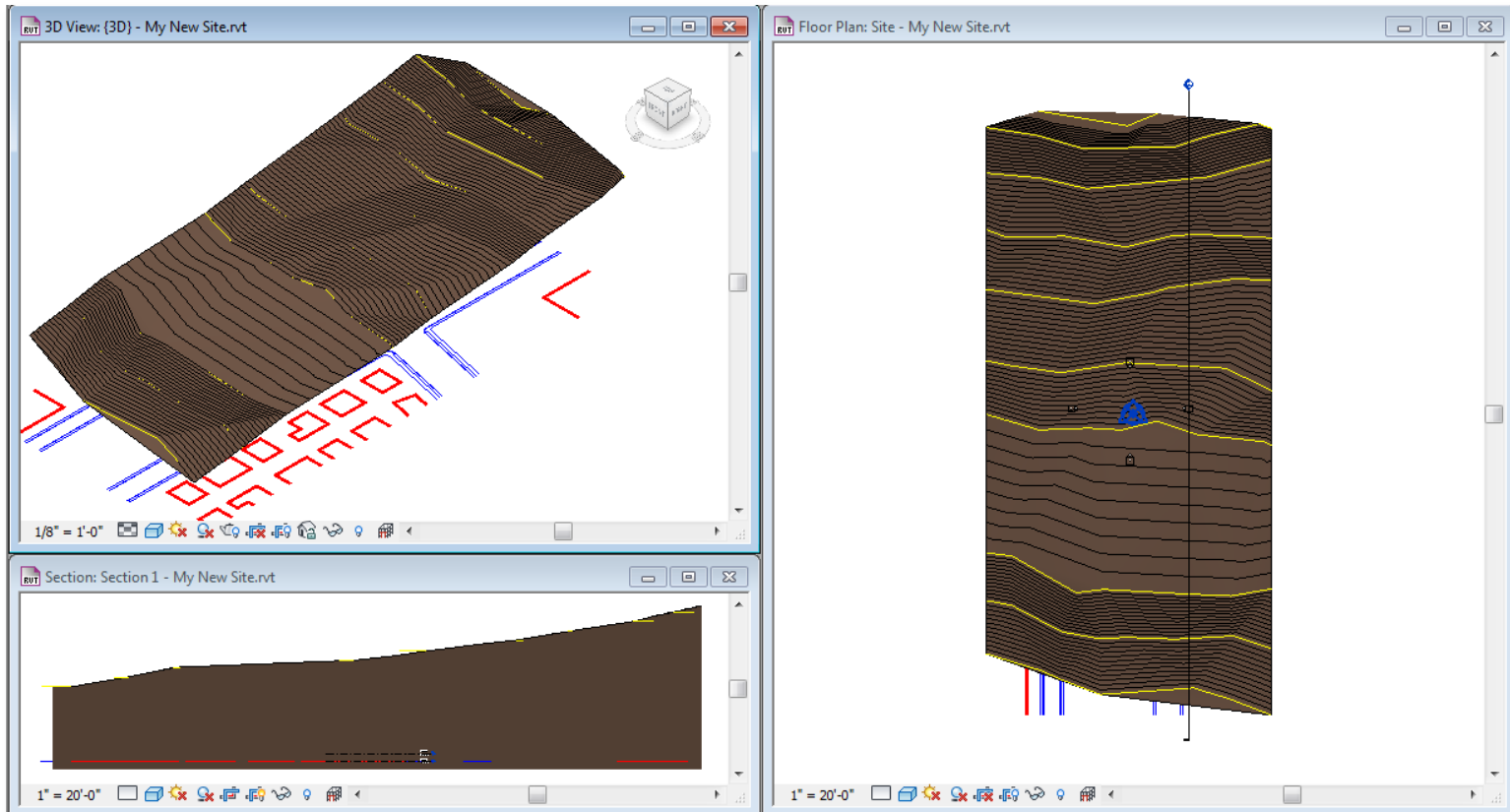
IMPORT DWG
FILE

CREATE
TOPOSURFACE

- IMPORT INSTANCE
- SELECT LAYER
- FINISH

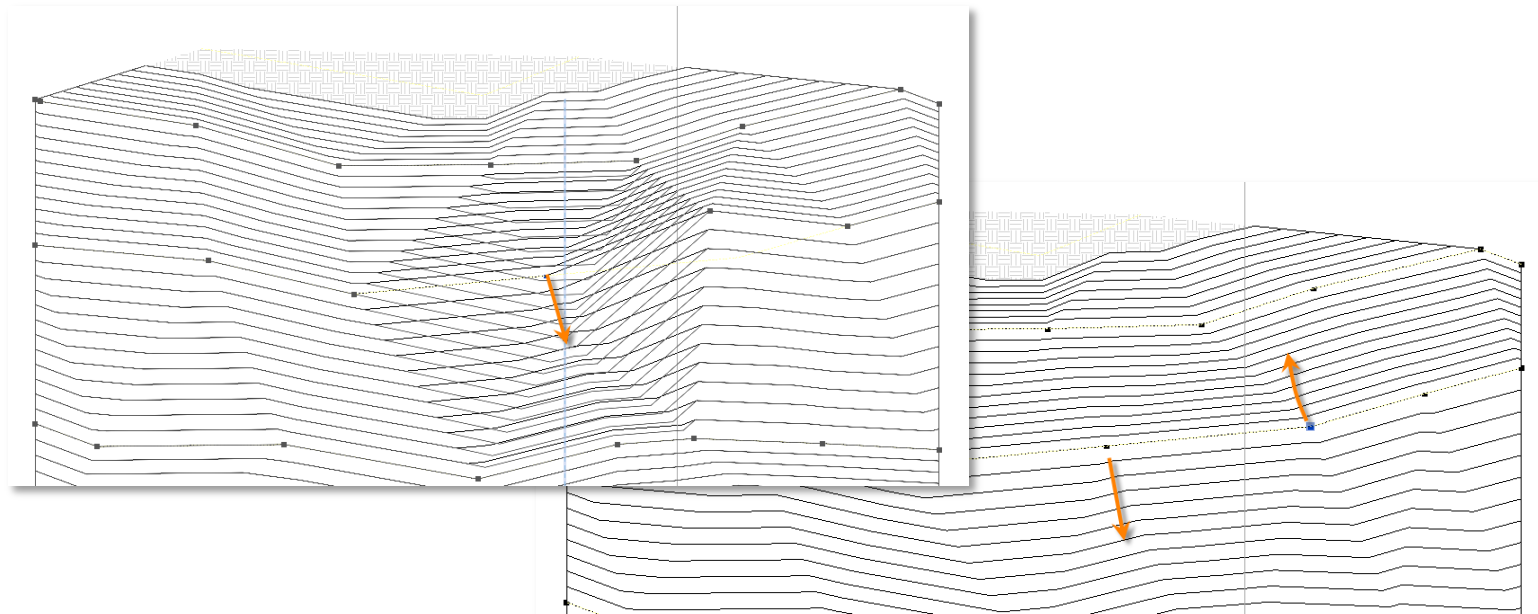
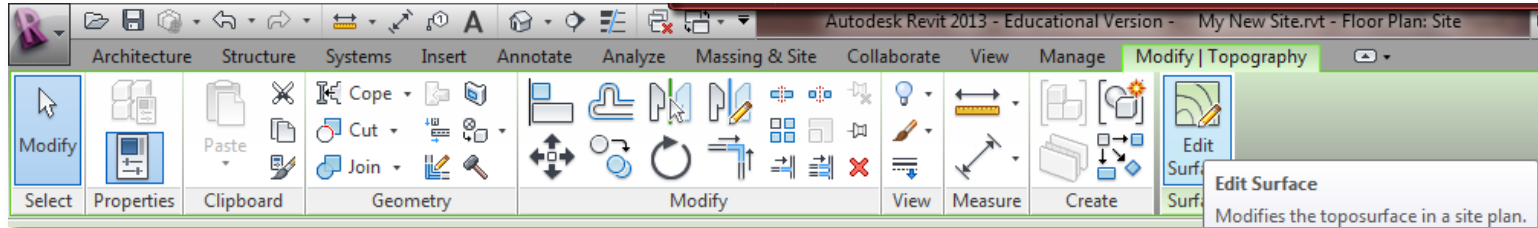
EDIT
TOPOSURFACE

- MOVE CONTROL POINTS
- FINISH



Creating a Revit Toposurface from an AutoCAD Drawing

*Edit the TopoSurface Modify Topography > Edit Surface
Select Toposurface control points and move them to modify model*



TOPOSURFACE

NEW PROJECT

IMPORT DWG
FILE

CREATE
TOPOSURFACE

- IMPORT INSTANCE
- SELECT LAYER
- FINISH

EDIT
TOPOSURFACE

- MOVE CONTROL POINTS
- FINISH

Creating a Revit Toposurface from an AutoCAD Drawing

TOPOSURFACE

Finish the Toposurface

NEW PROJECT

IMPORT DWG FILE

CREATE TOPOSURFACE

- IMPORT
INSTANCE
- SELECT
LAYER
- FINISH

EDIT TOPOSURFACE

- MOVE
CONTROL
POINTS
- FINISH

