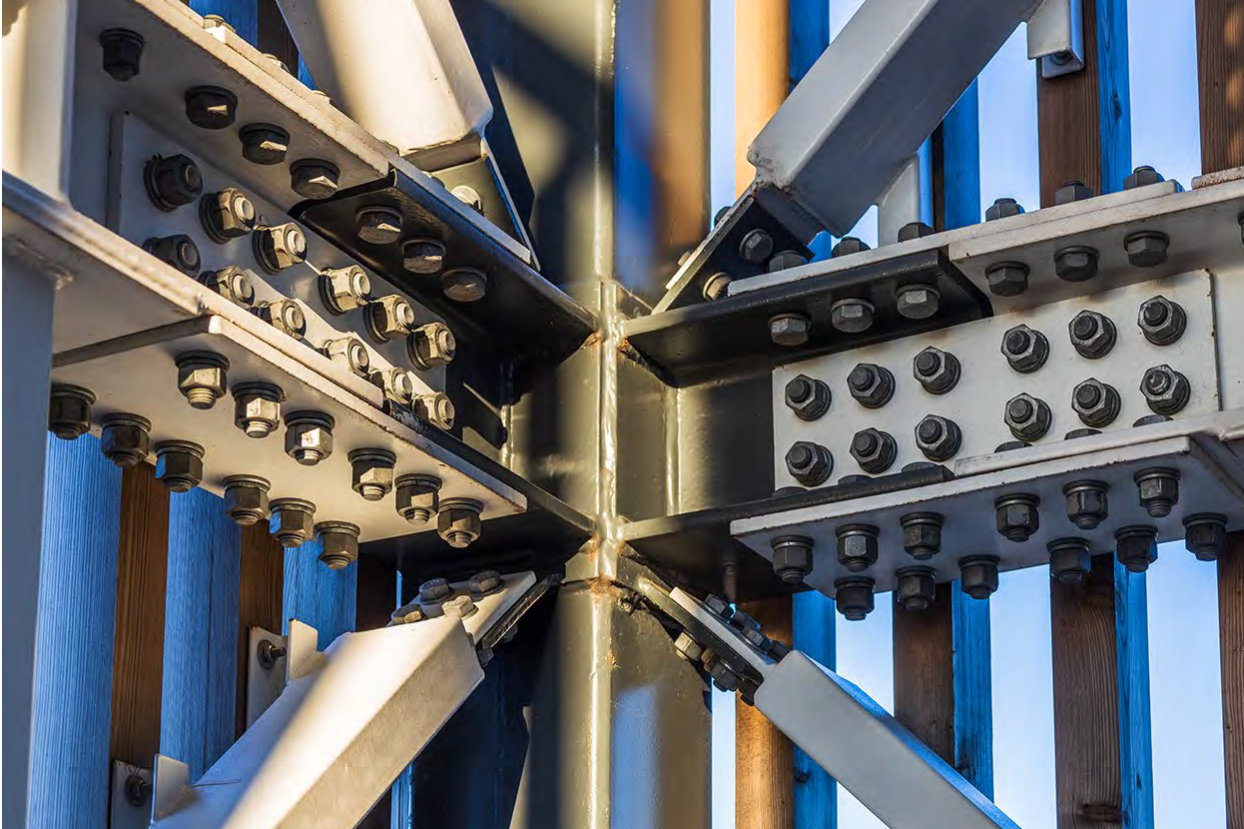


Seeking Structural Drafter

Full-time position, looking for graduates or students graduating this winter 2023 or spring 2024. Preferably the candidate has Revit experience and an understanding of either architecture or structural engineering.

Pay Range: \$50,000 to \$70,000 Annually



We are a cohesive group of civil, mechanical, and structural engineers, geologists, landscape architects, surveyors, and a talented support team with the common goal of providing services tailored to accommodate each of our client's specific needs.

Contact:

Emily Dembrak, PVE | Staffing Specialist

edembrak@pve-llc.com

pve-llc.com/careers

Paul Senica, P.E., Structural Team Director

PVE, LLC provides equal employment opportunities (EEO) to all employees and applicants for employment without regard to race, color, religion, sex, national origin, age, disability, or genetics. In addition to federal law requirements, PVE, LLC complies with applicable state and local laws governing nondiscrimination in employment in every location in which the company has facilities. This policy applies to all terms and conditions of employment, including recruiting, hiring, placement, promotion, termination, layoff, recall, transfer, leaves of absence, compensation, and training. PVE, LLC expressly prohibits any form of workplace harassment based on race, color, religion, gender, sexual orientation, gender identity or expression, national origin, age, genetic information, disability, or veteran status.

<https://www.pve-llc.com>