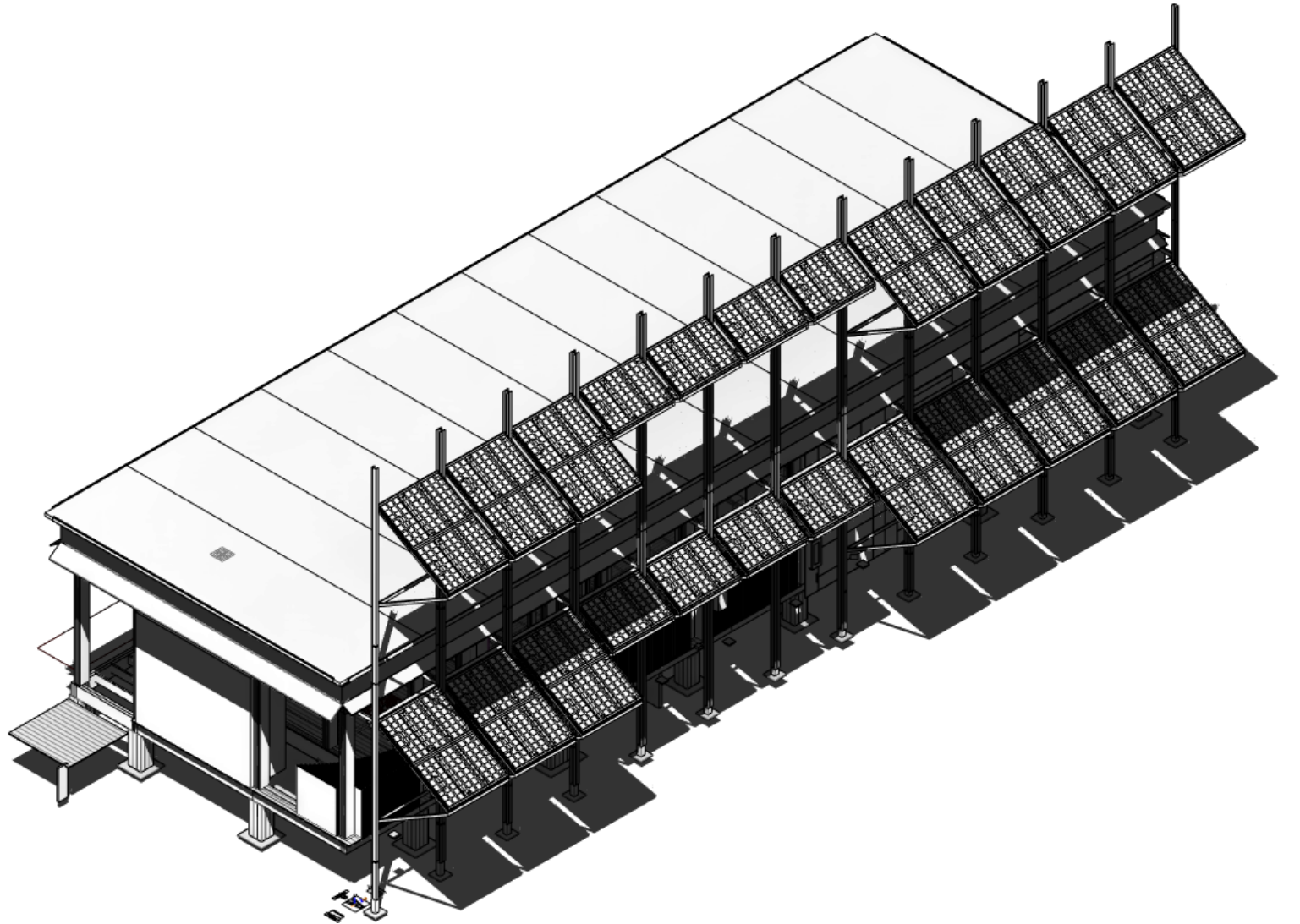


Solar Wall Updates

Joe Wiebelhaus + Stephen December

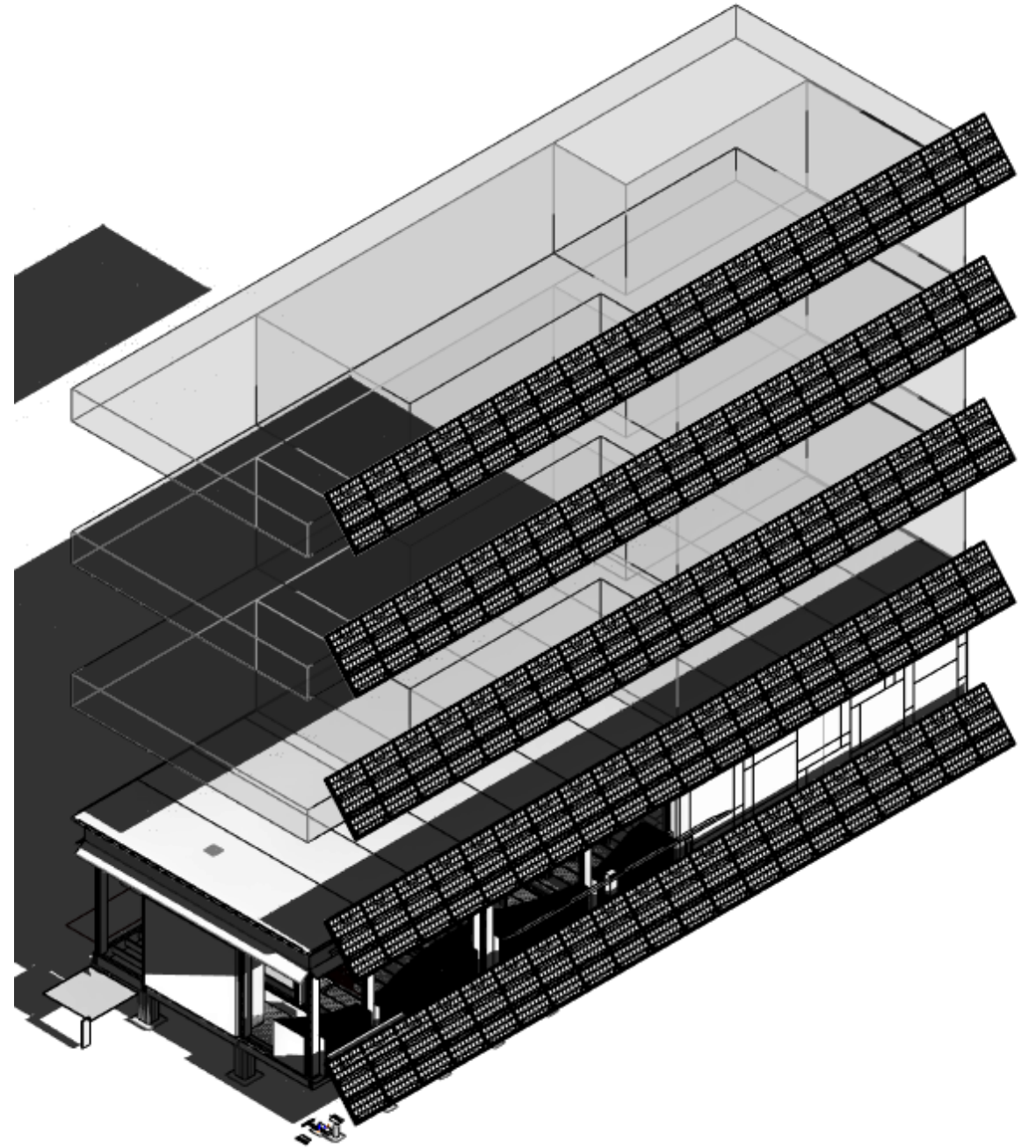
Current Issues

- Summer optimal angle causes shading in the stackable setting(30° angle)
- Shading occurs because of the double solar panel frame.
- Abundance of unneeded material used



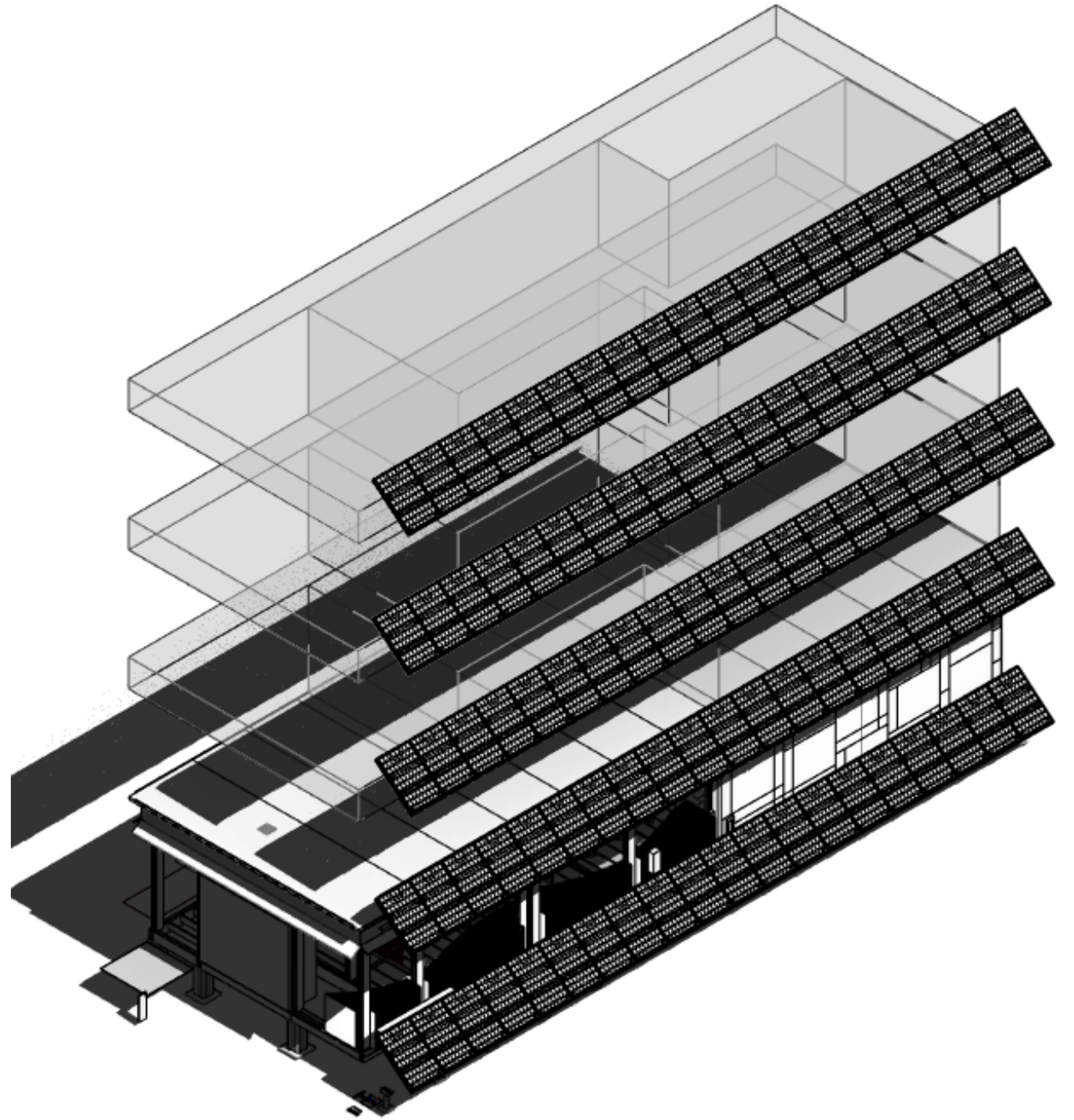
Proposed Solutions

- Change the orientation of the panels
- Move the panels to a lower height (opens up the view)
- 50° Winter positioning
- Less framing members needed



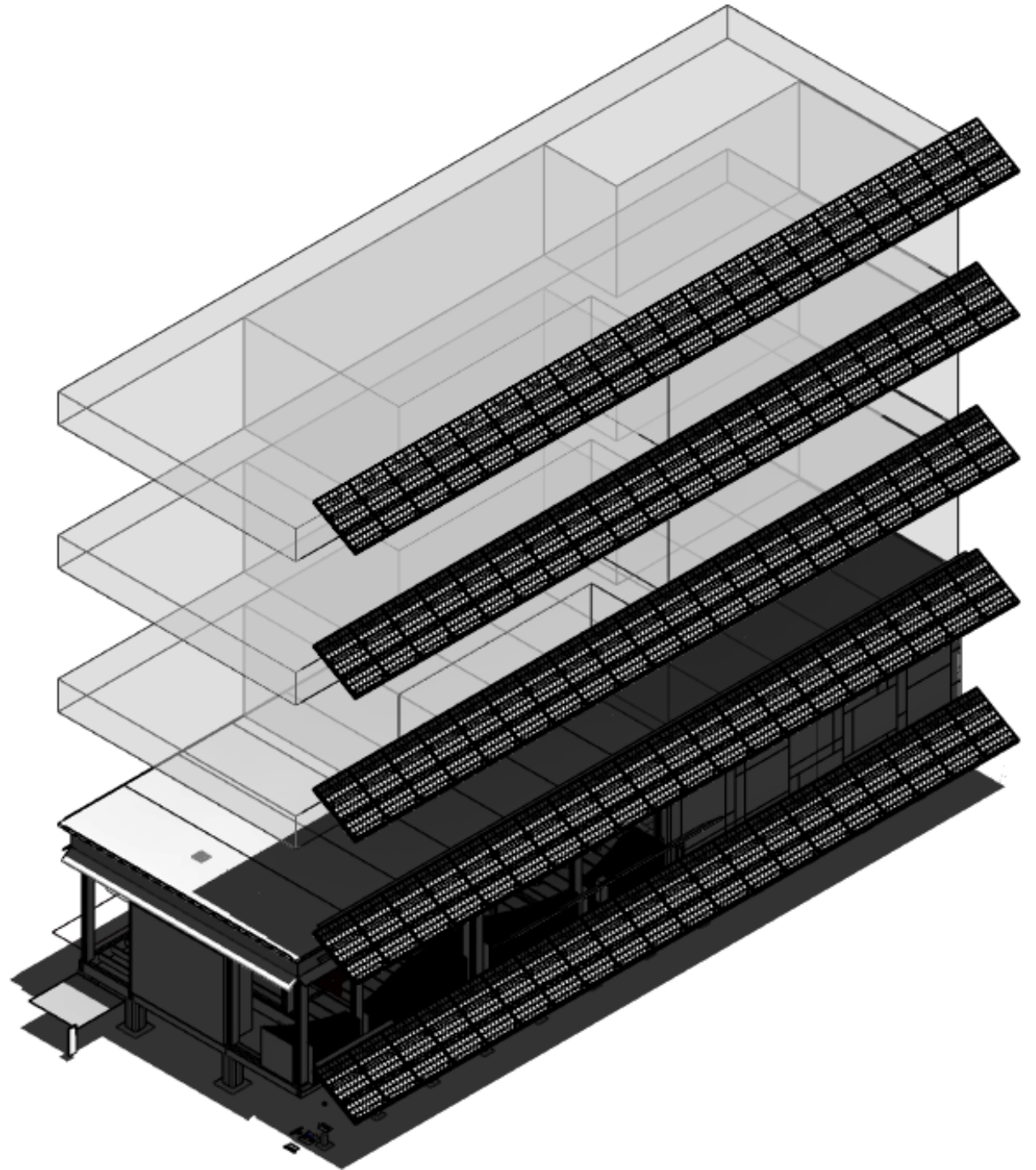
Proposed Solutions

-Fall and Spring position of solar panels at 40°



Proposed Solutions

- Position of 30° for Summer Position orientation



Proposed Solutions

-West elevation

-Shows position of panels

