

ARCH 3691  
Advanced Design &  
Building Information Modeling

# Revit Tutorial

3D curved surface

5 min.

HOCHUL KIM  
dance05271@naver.com

# Purpose of studying

## Purpose of studying

Open

Draw 3D curve

Setting Workview

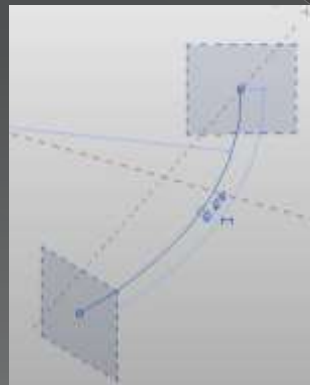
Draw sections

make shape

- Massing tool
- Reference line
- Change work view
- Understand solid tool



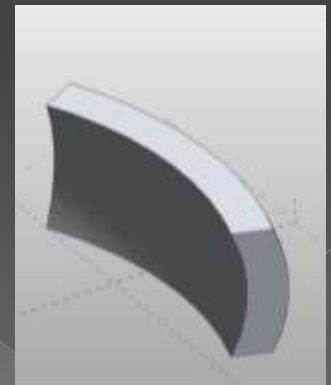
3D curve



Setting up work view



Drawing section



Final

# Open a new file

Purpose of studying

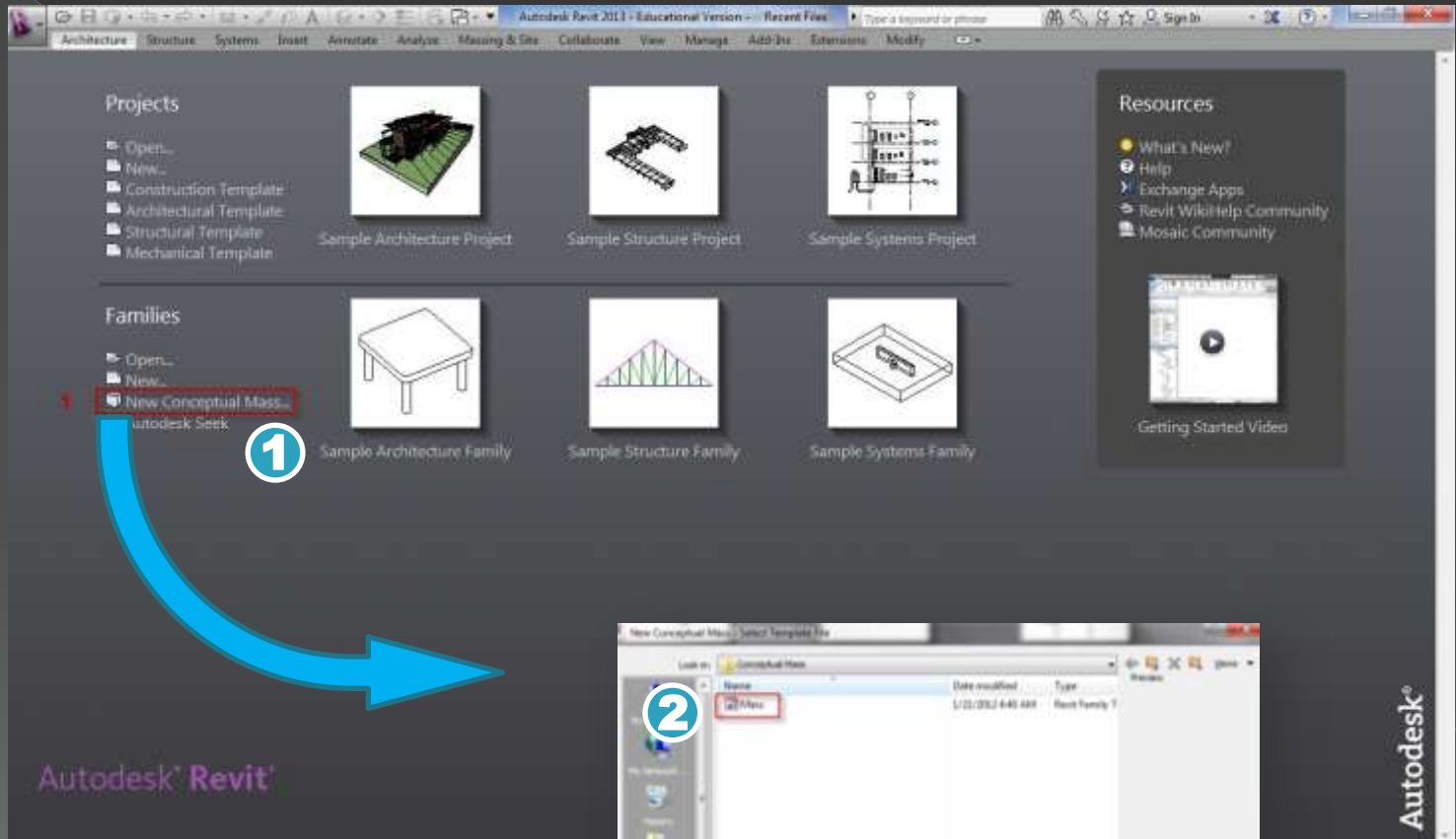
Open

Draw 3D curve

Setting Workview

Draw sections

make shape



# Drawing 3D curve

Purpose of studying

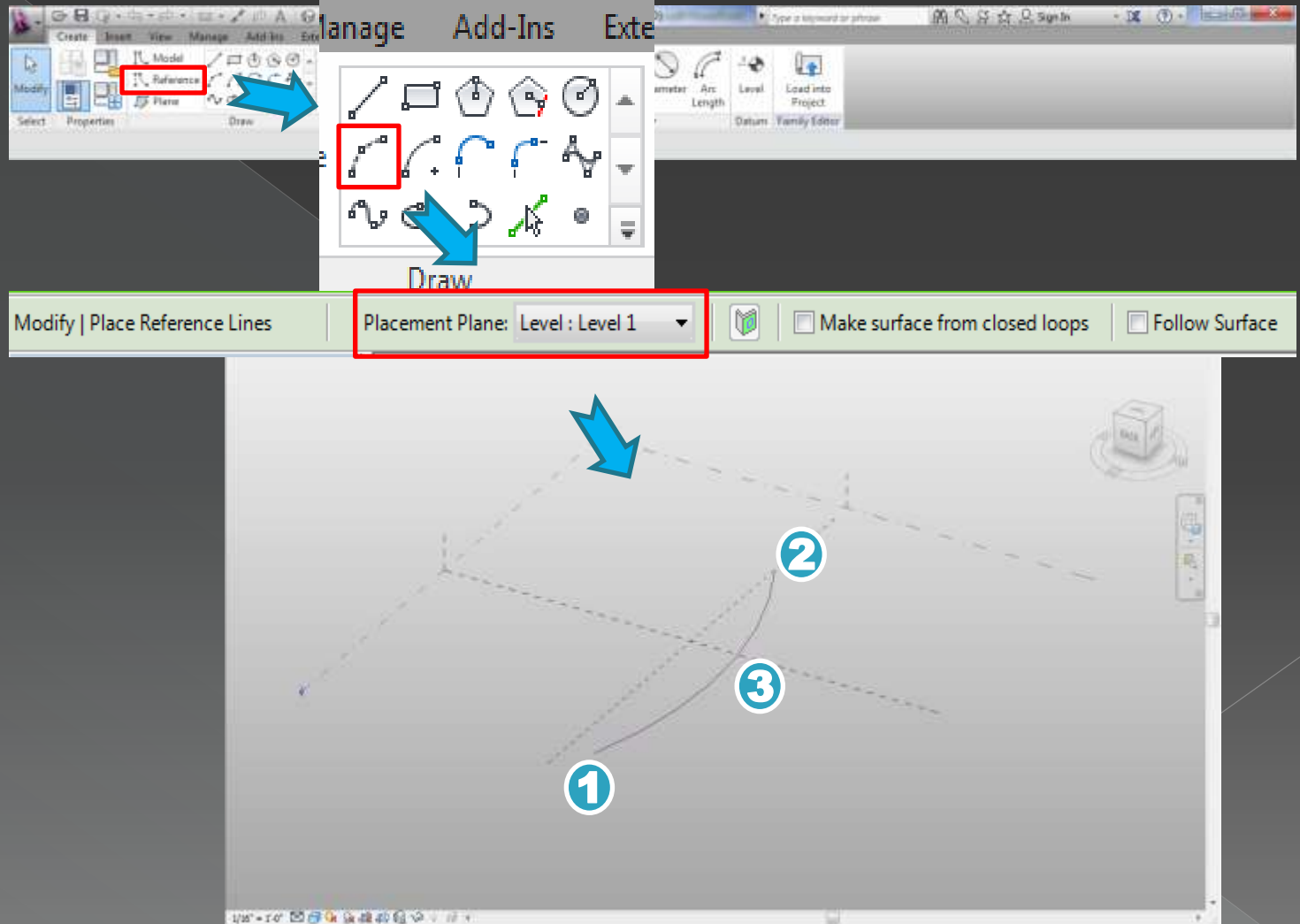
Open

**Draw 3D curve**

Setting Workview

Draw sections

make shape



# Setting up workview

Purpose of studying

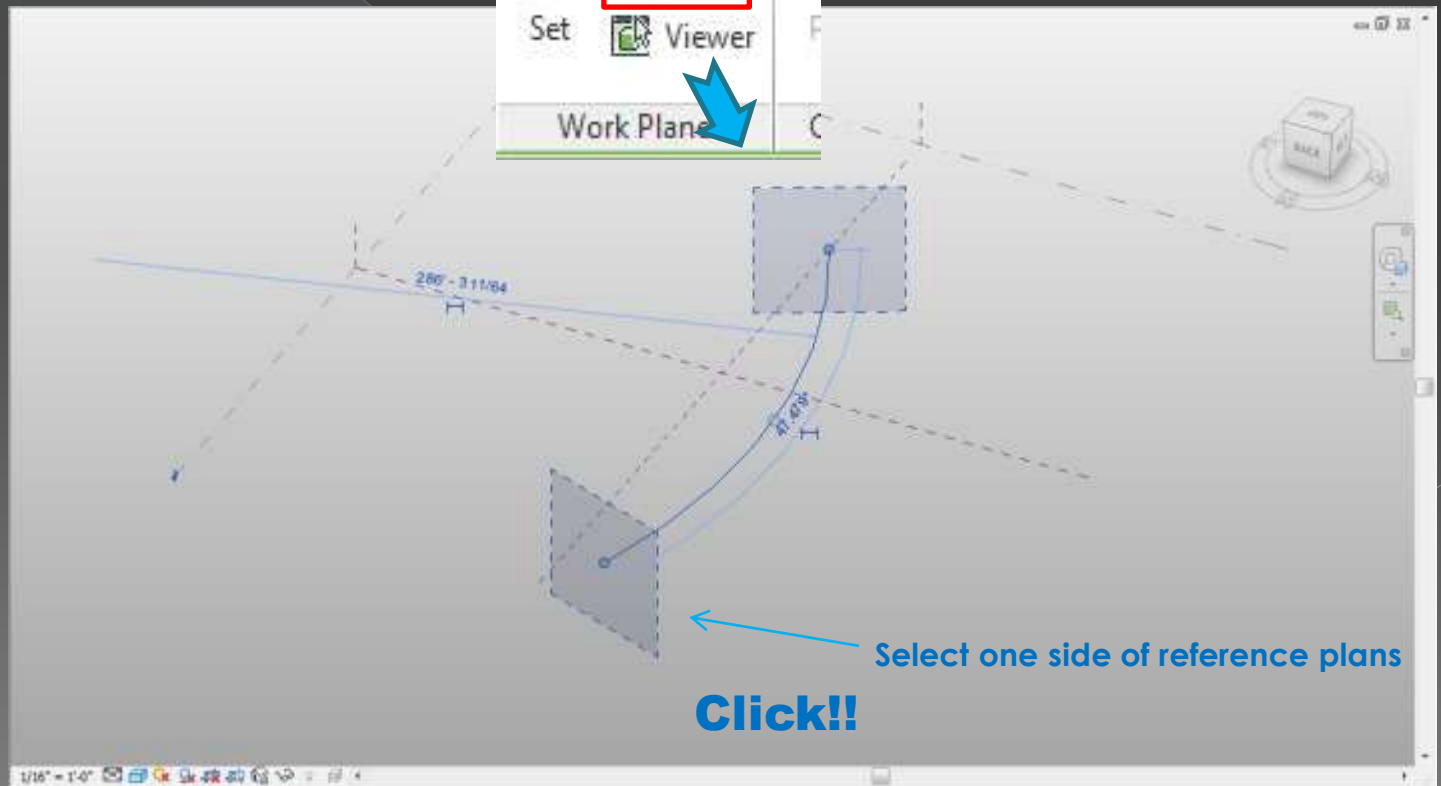
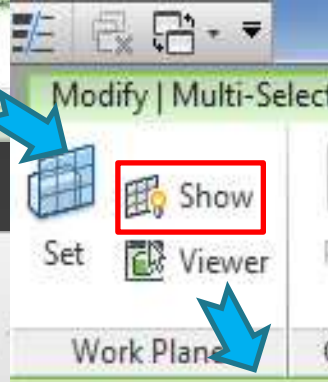
Open

Draw 3D curve

**Setting Workview**

Draw sections

make shape



# Drawing section

Purpose of studying

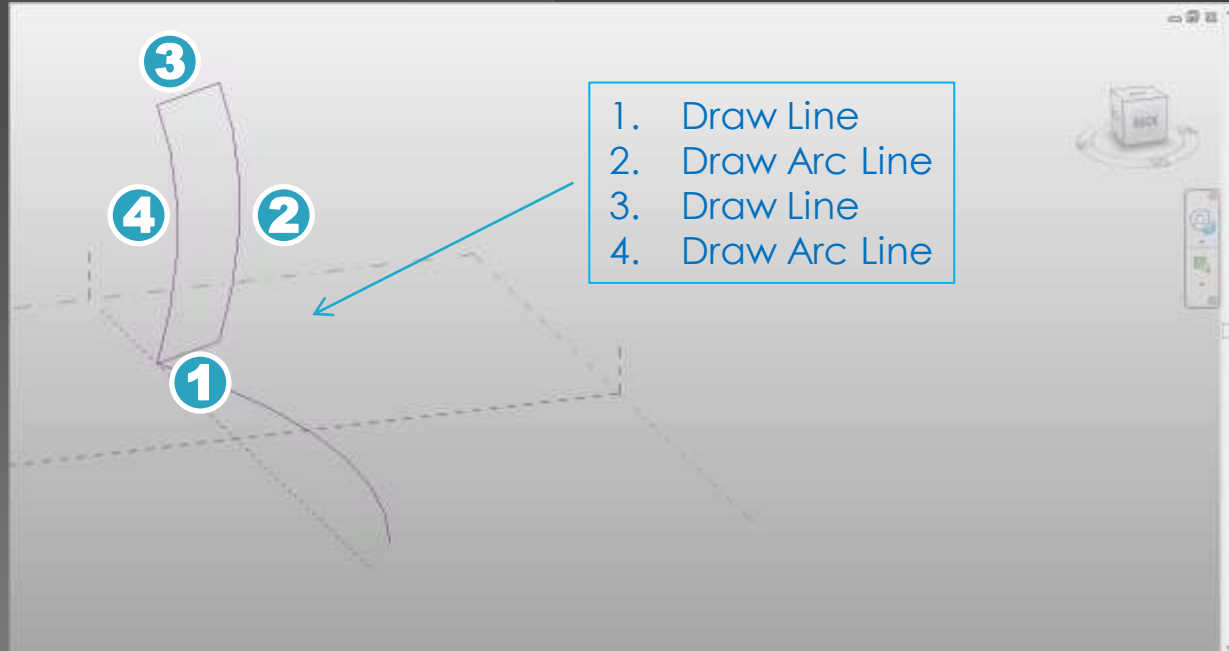
Open

Draw 3D curve

Setting Workview

**Draw sections**

make shape



Purpose of studying

Open

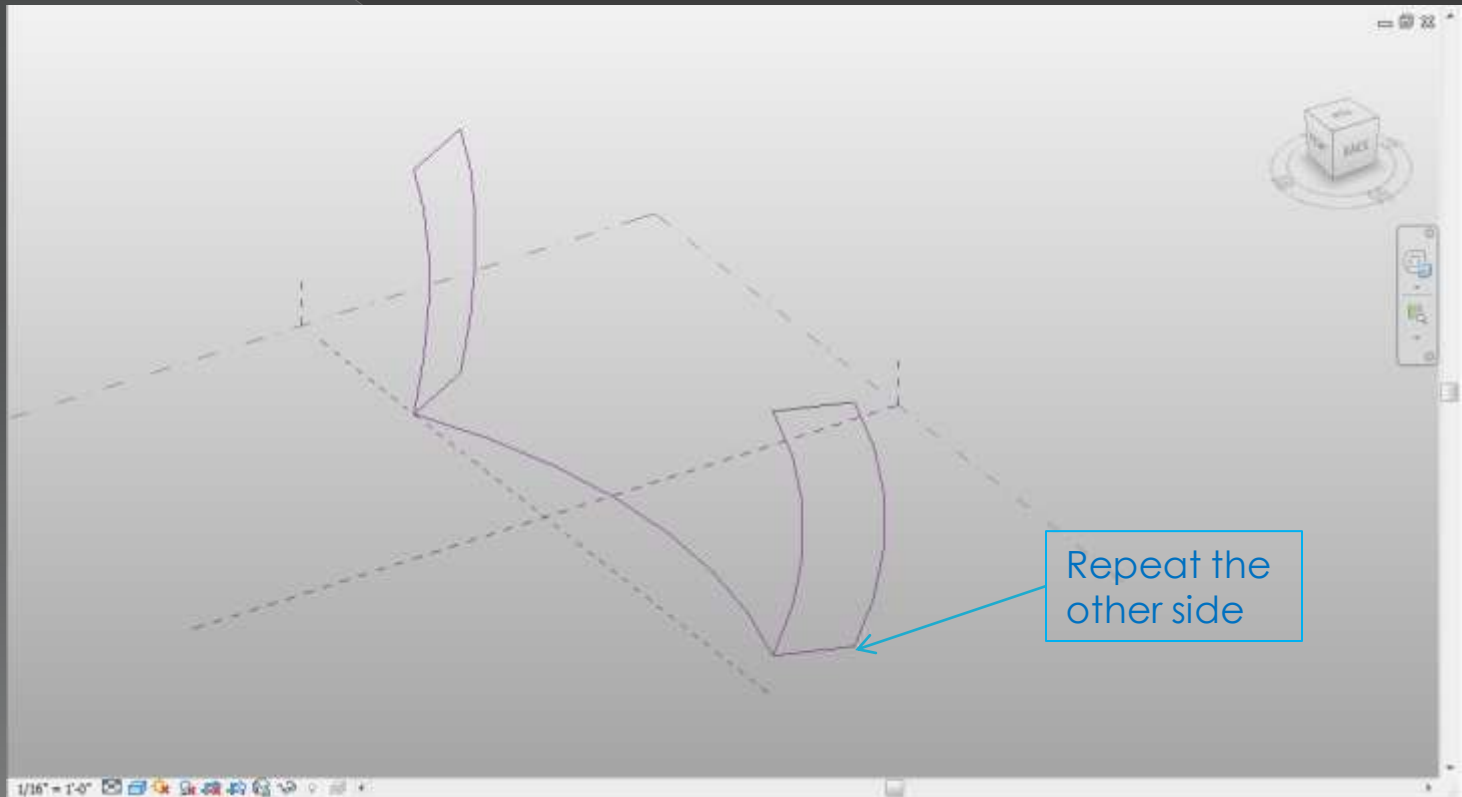
Draw 3D curve

Setting Workview

**Draw sections**

make shape

**For Your Information: Both sides of shapes doesn't need to same shapes.**





# Making shape

Purpose of studying

Open

Draw 3D curve

Setting Workview

Draw sections

**make shape**



Select all lines using **control** button  
Click the **solid** button

