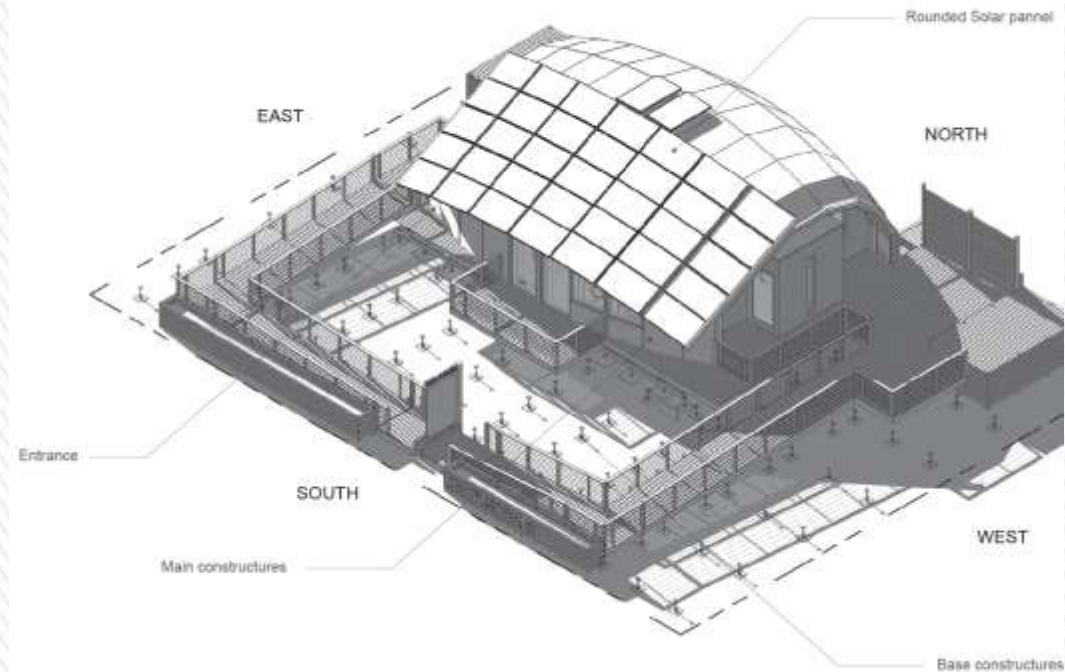


Canada House



Post2_Hochul.kim_Canada house



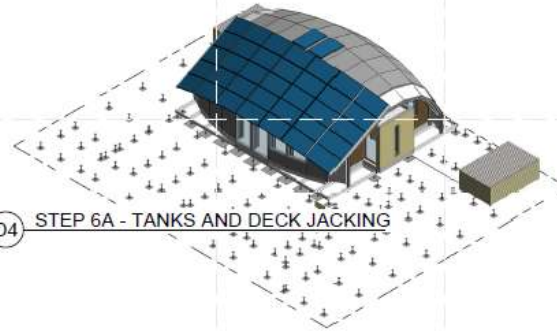
- Healthy
- Safe
- Durable
- Affordable

Process of construct

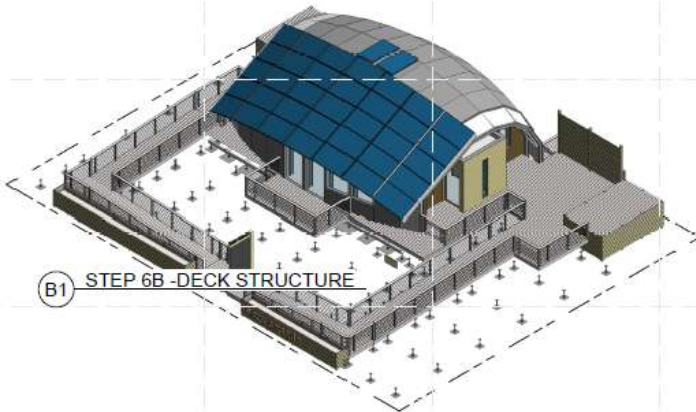




D1 STEP 5 - PV MOUNTING



D4 STEP 6A - TANKS AND DECK JACKING



B1 STEP 6B - DECK STRUCTURE



B4 STEP 7A - LANDSCAPE PLANTS



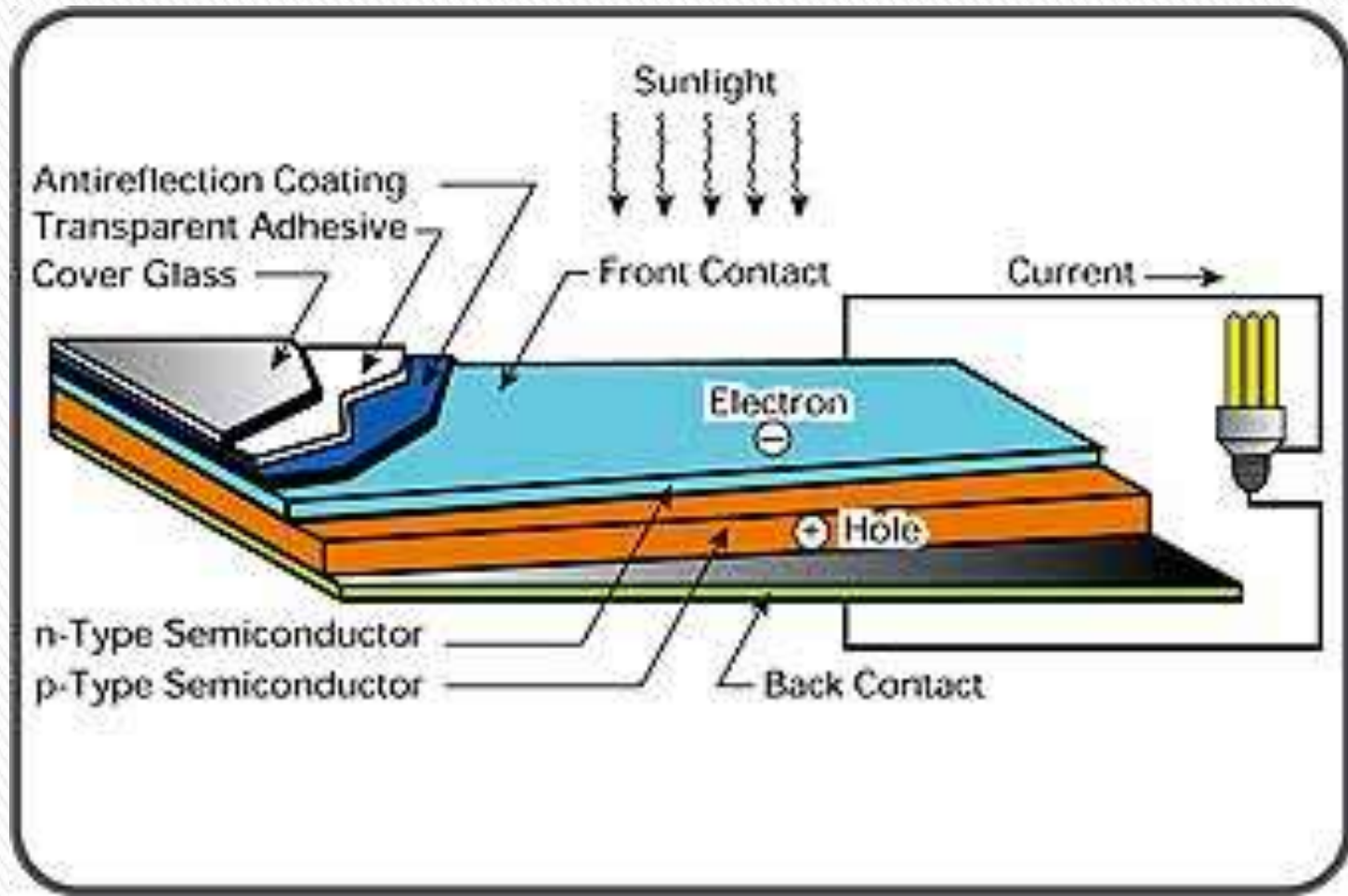
Tipi House



A **tipi** (also **tepee** and **teepee**) is a conical tent traditionally made of animal skins and wooden poles used by the nomadic tribes and sedentary tribal dwellers (when hunting) of the Great Plains. Tipis are stereotypically associated with Native Americans in the United States in general, but Native Americans from places other than the Great Plains mostly used different types of dwellings. The term *wigwam* (a domed structure) is sometimes incorrectly used to refer to a tipi.

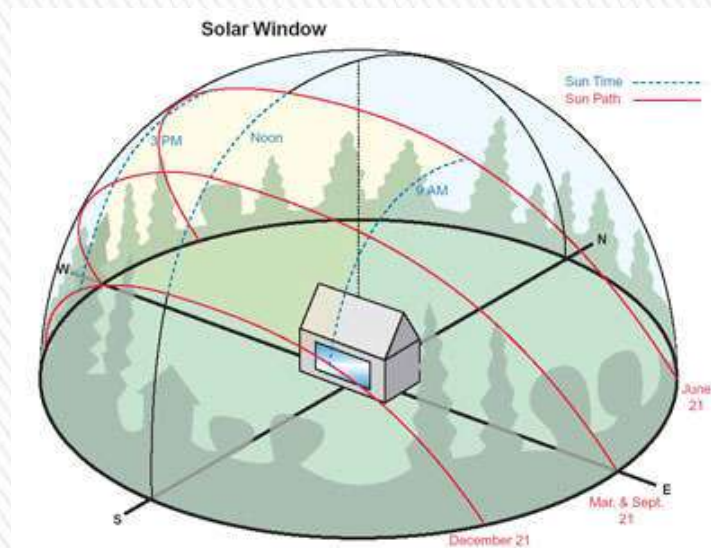
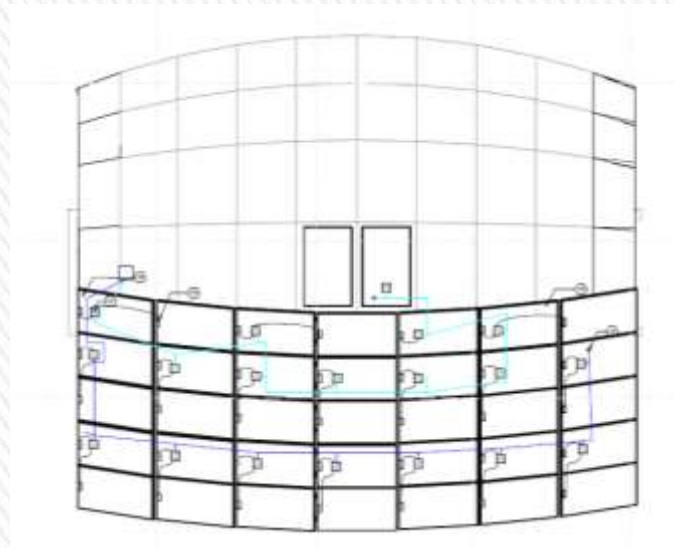
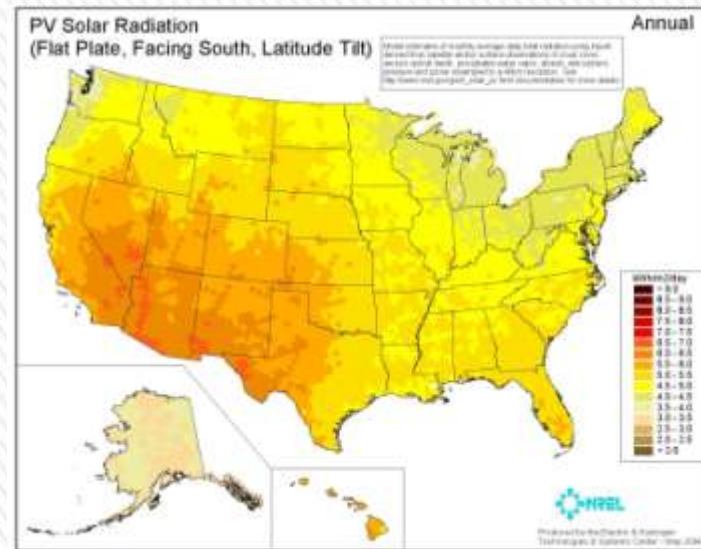


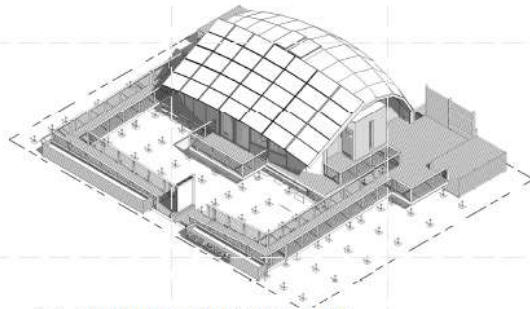
Solar pannel



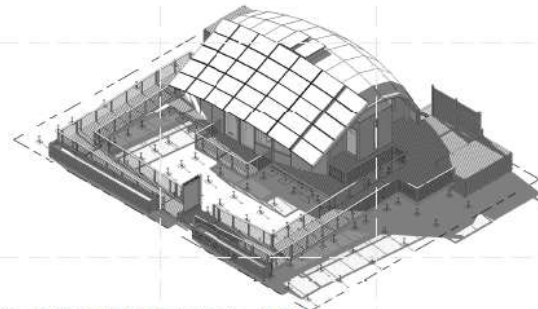
Region and Solar energy

- According to latitude, solar energy is changed because the Earth axis is tilted.

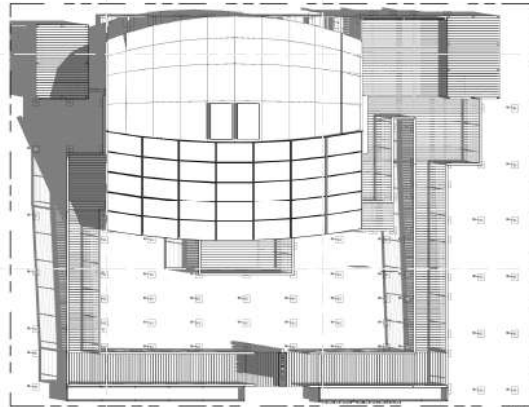




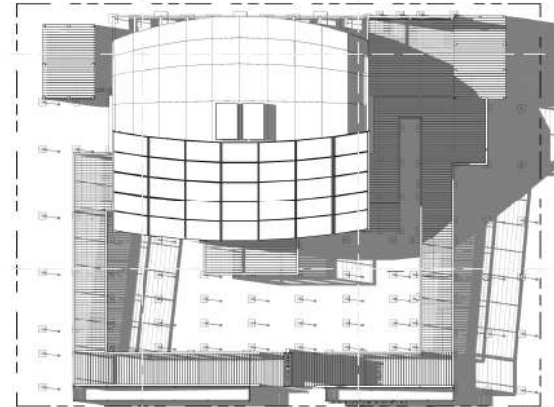
C1 SHADED PERSPECTIVE - 9 AM



C4 SHADED PERSPECTIVE - 5 PM



A1 SHADED PLAN VIEW - 9 AM



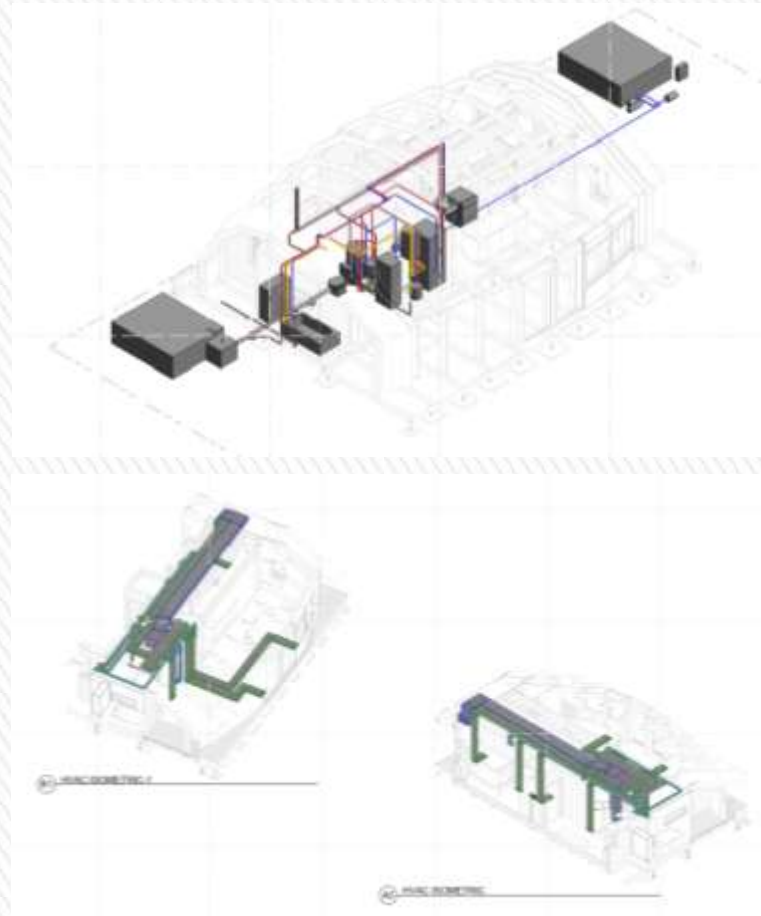
A4 SHADED PLAN VIEW - 5 PM

- Materials and color palettes that reflect customary art and the natural environment
- Magnesium oxide-based structural insulated panels that are highly resistant to fire and mold
- An 8.3-kW photovoltaic system engineered for high performance in Alberta's harsh winter climate.



Air and Pumping system

- A highly effective air-to-water heat pump used for space conditioning and hot water production
- A photovoltaic system that operates at 93% of its optimal efficiency and has a rounded form that responds to the cultural desires of the client
- A sophisticated control system that allows for monitoring and long-term optimization



Regional problems



- Heavy snow can cover the solar panels. So, It makes inefficient to accumulate the solar energy.

