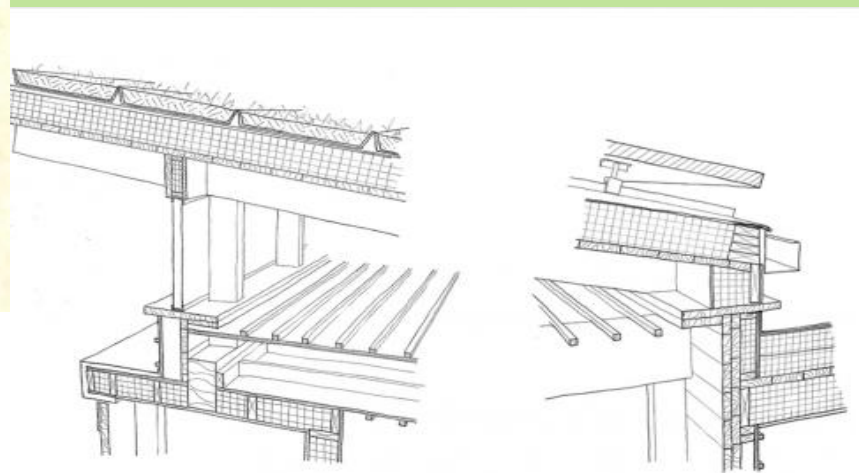
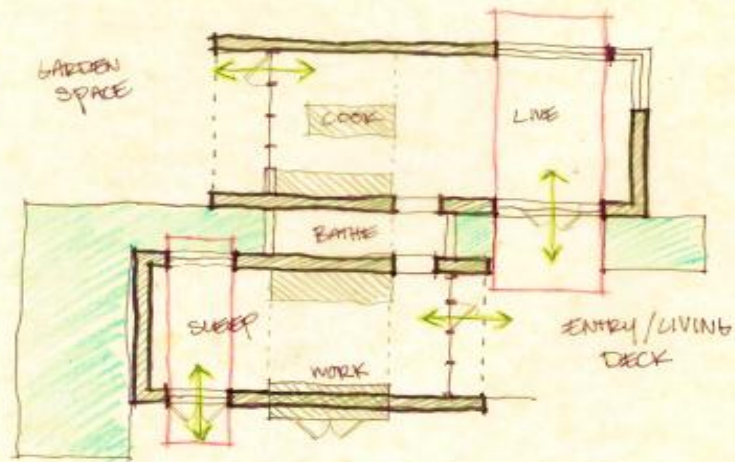
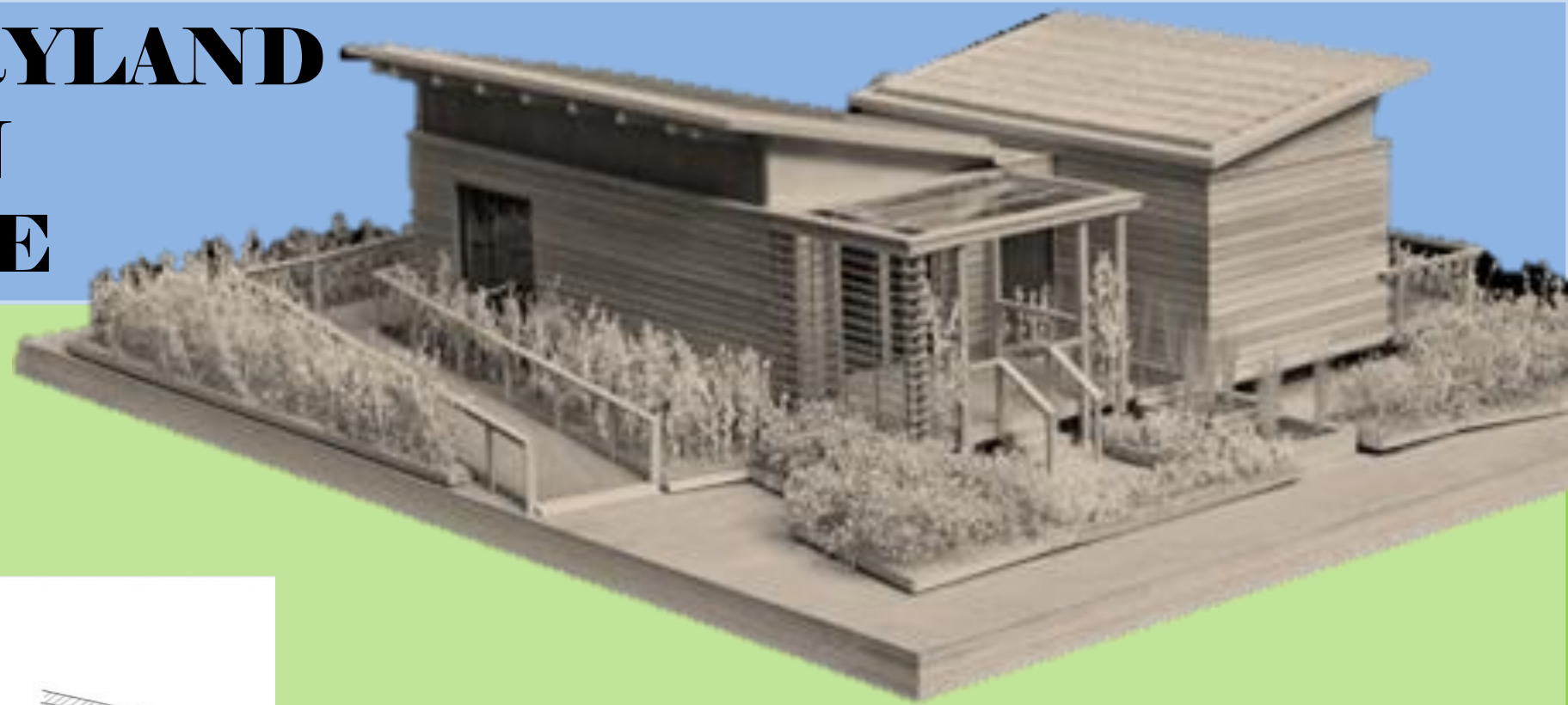




# UNIVERSITY OF MARYLAND SOLAR DECATHLON WATERSHED HOUSE



WaterShed's configuration is based on water's trail – falling from clouds to highlands, racing down waterways and streams, strained by plants, within the ground, and eventually evaporating.

The house is shaped using two rectangular volumes topped by sloping shed roofs, designed to generate solar energy and accumulate rainwater, which is collected at the central water axis. Gray water is collected from the house and redirected to this axis through several variations of systems within the mechanical core. Space saving furniture allows the space to be more flexible.

