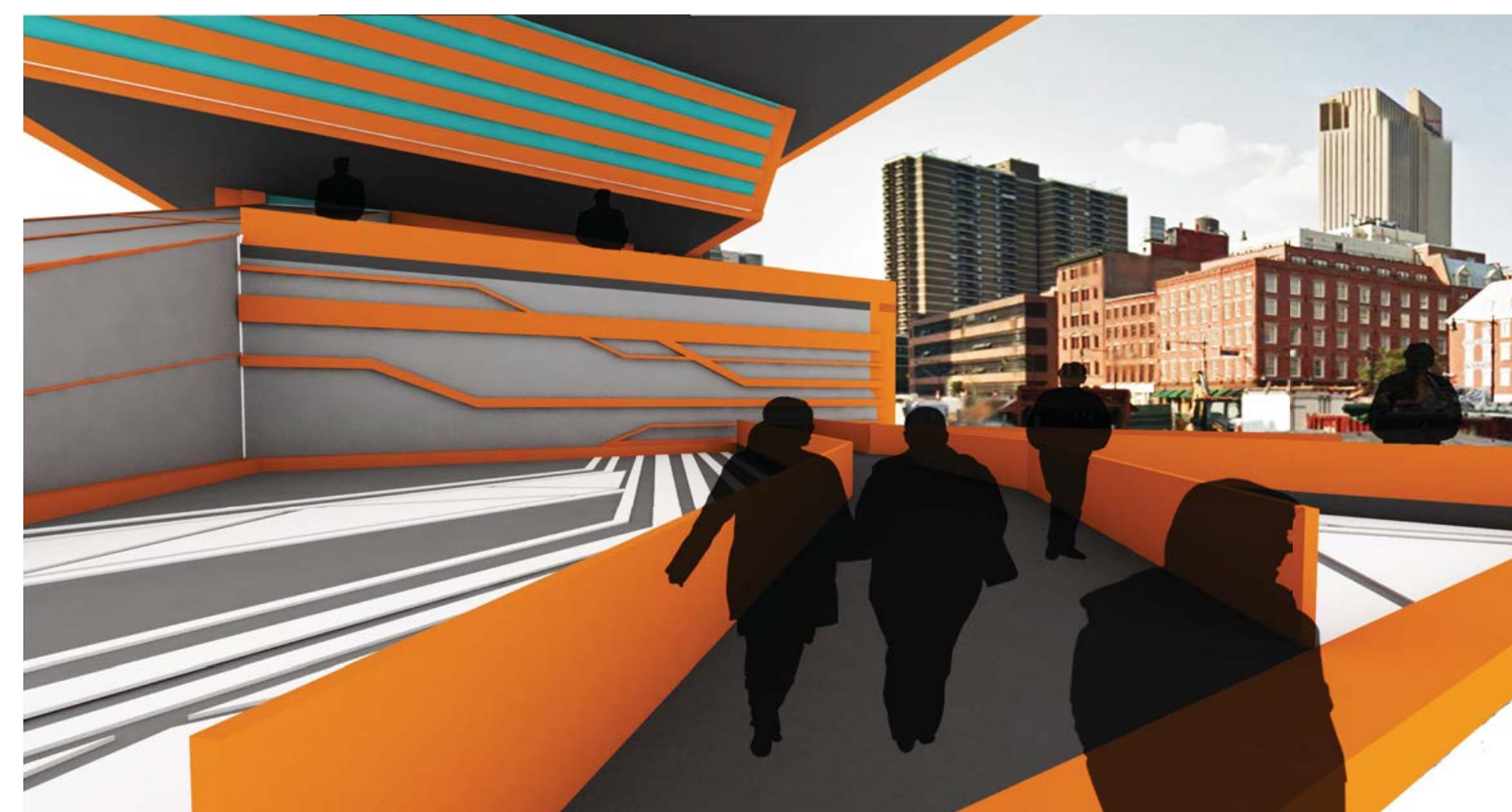




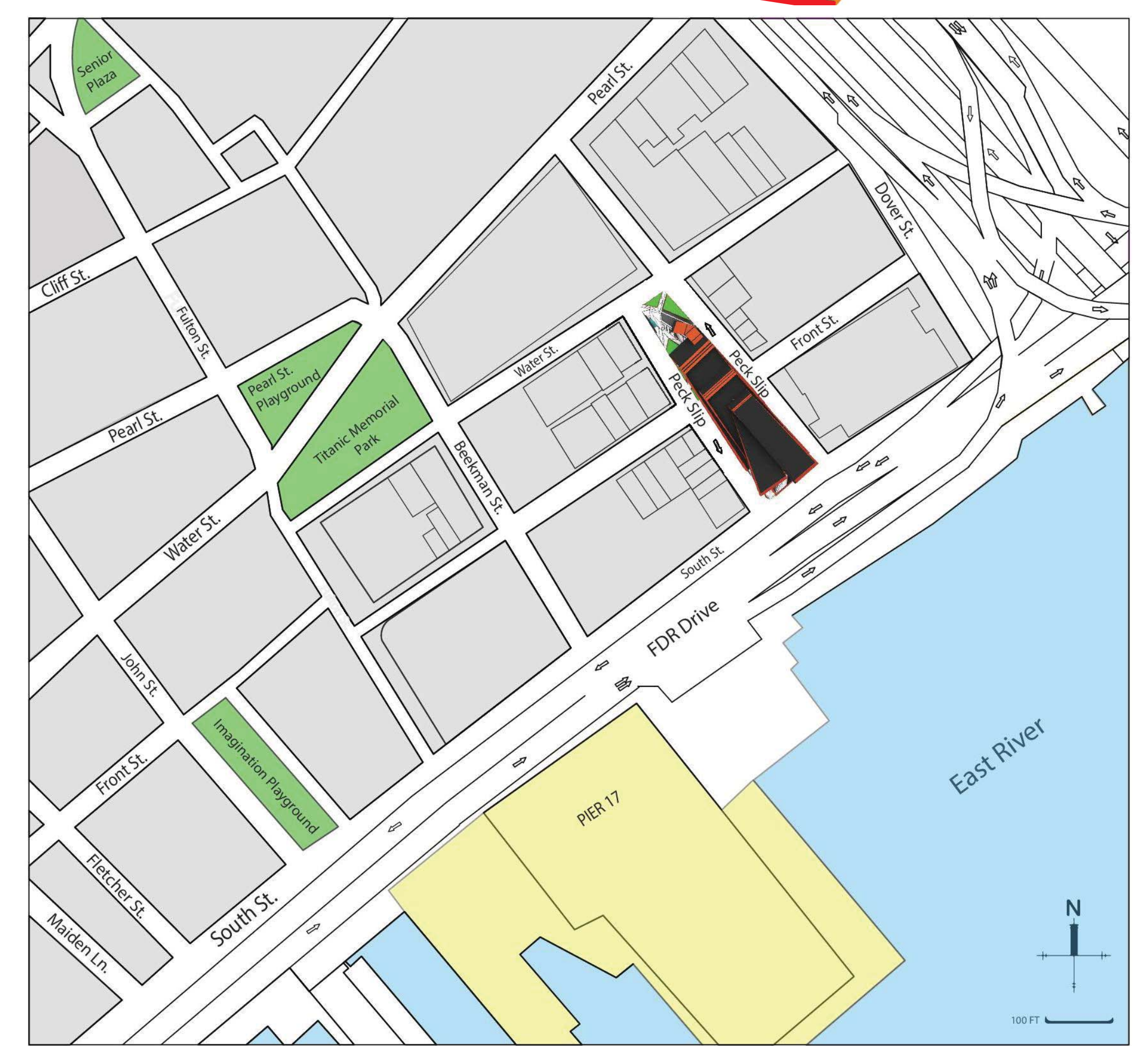
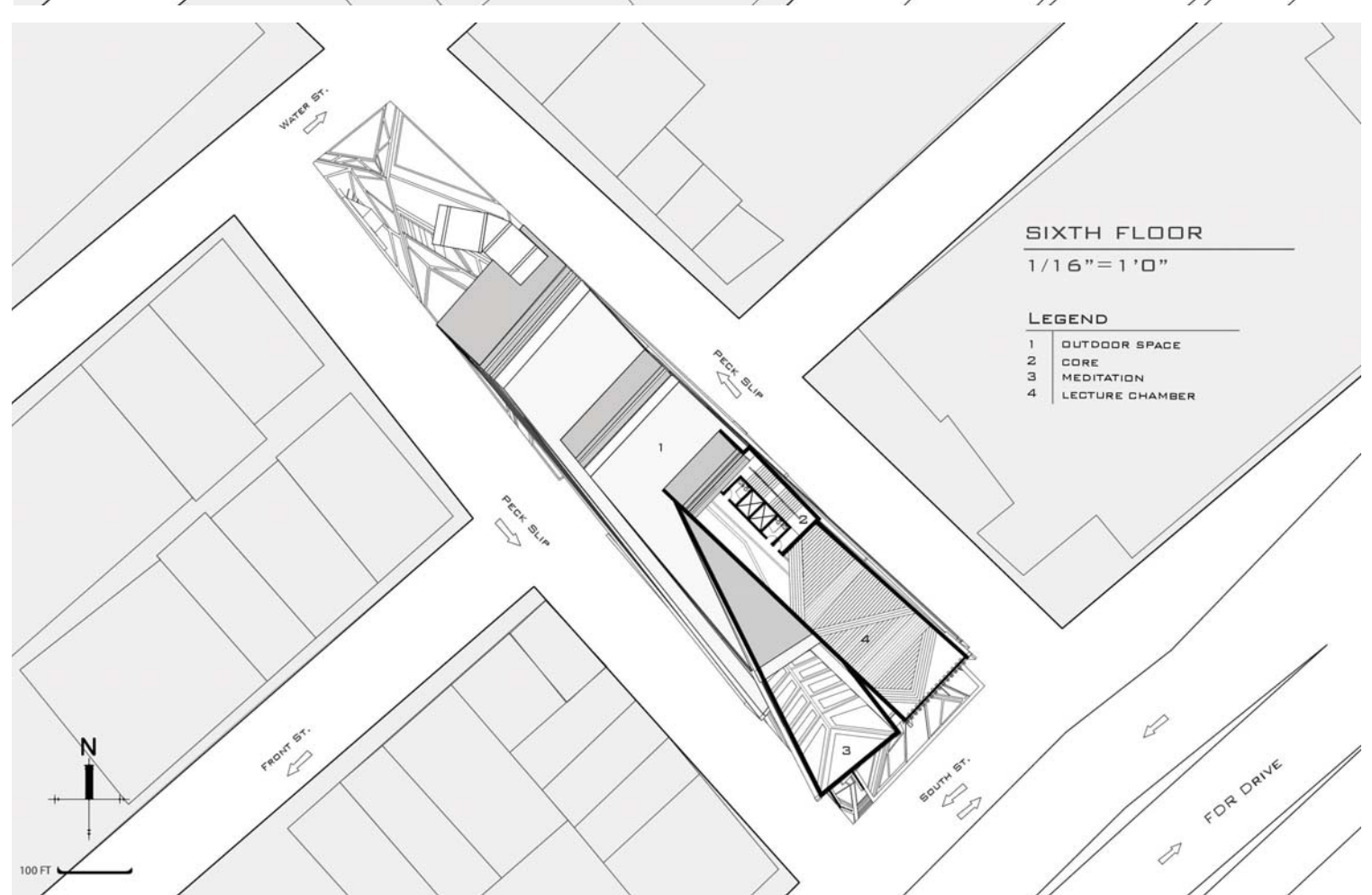
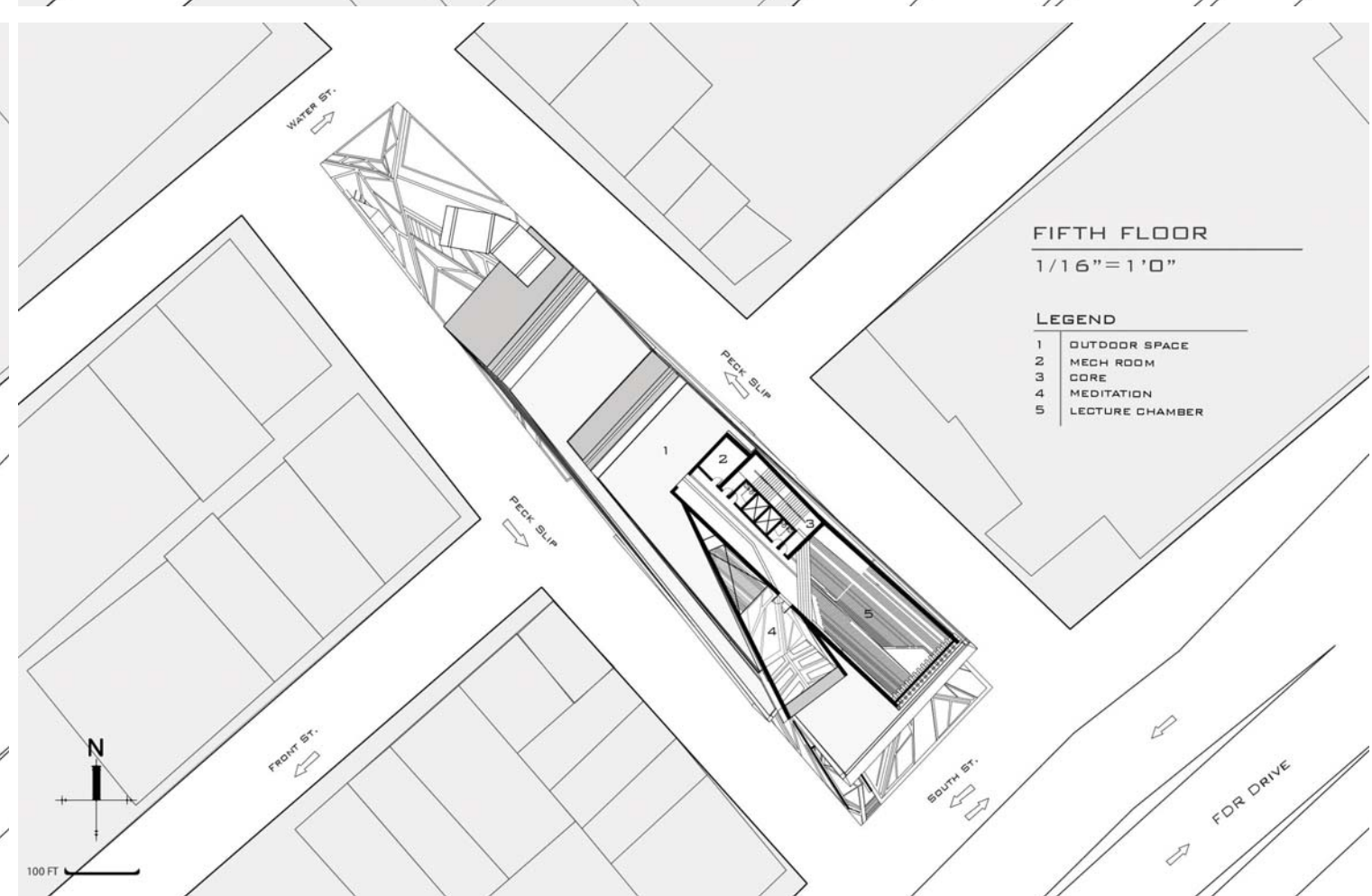
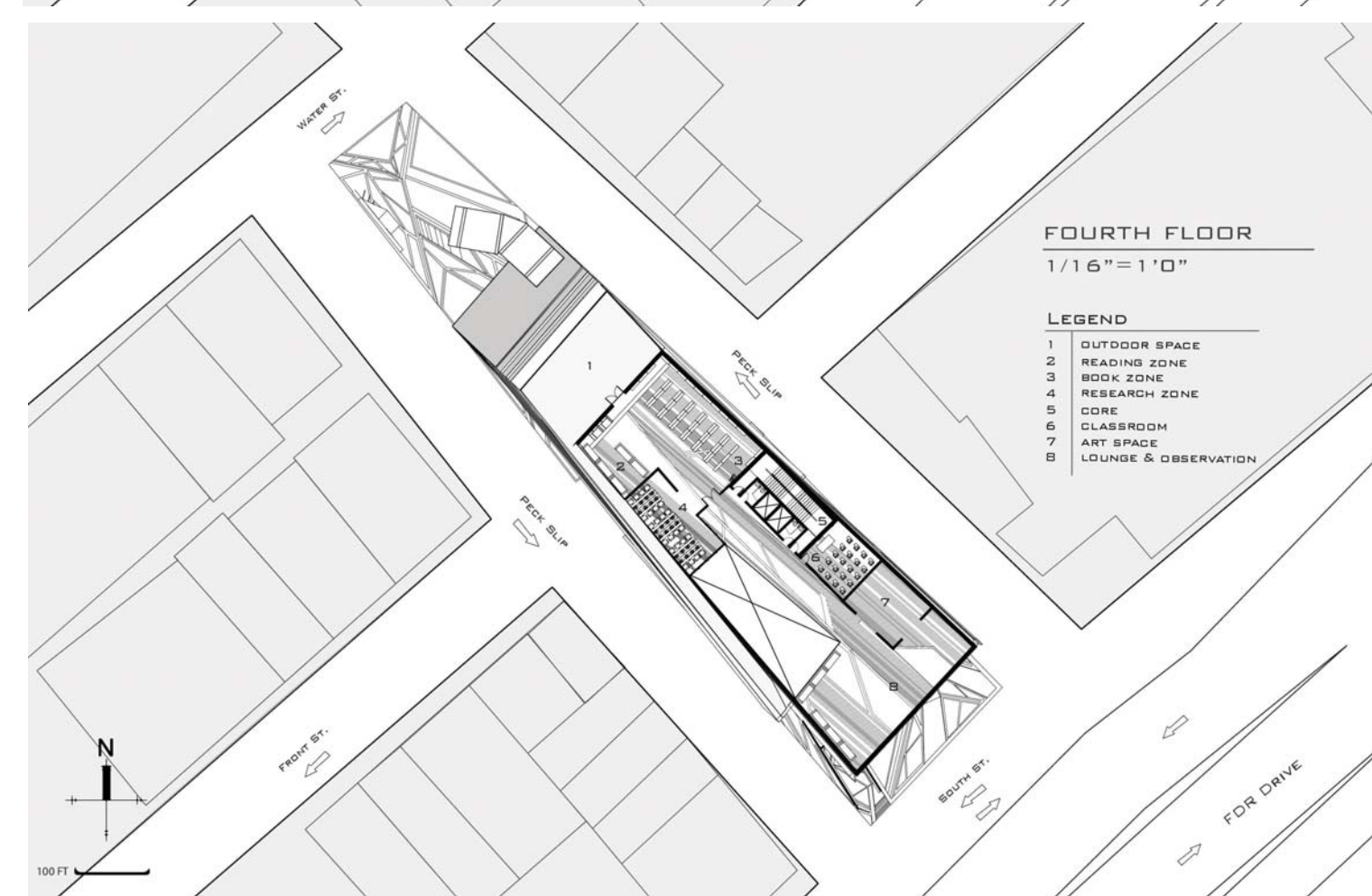
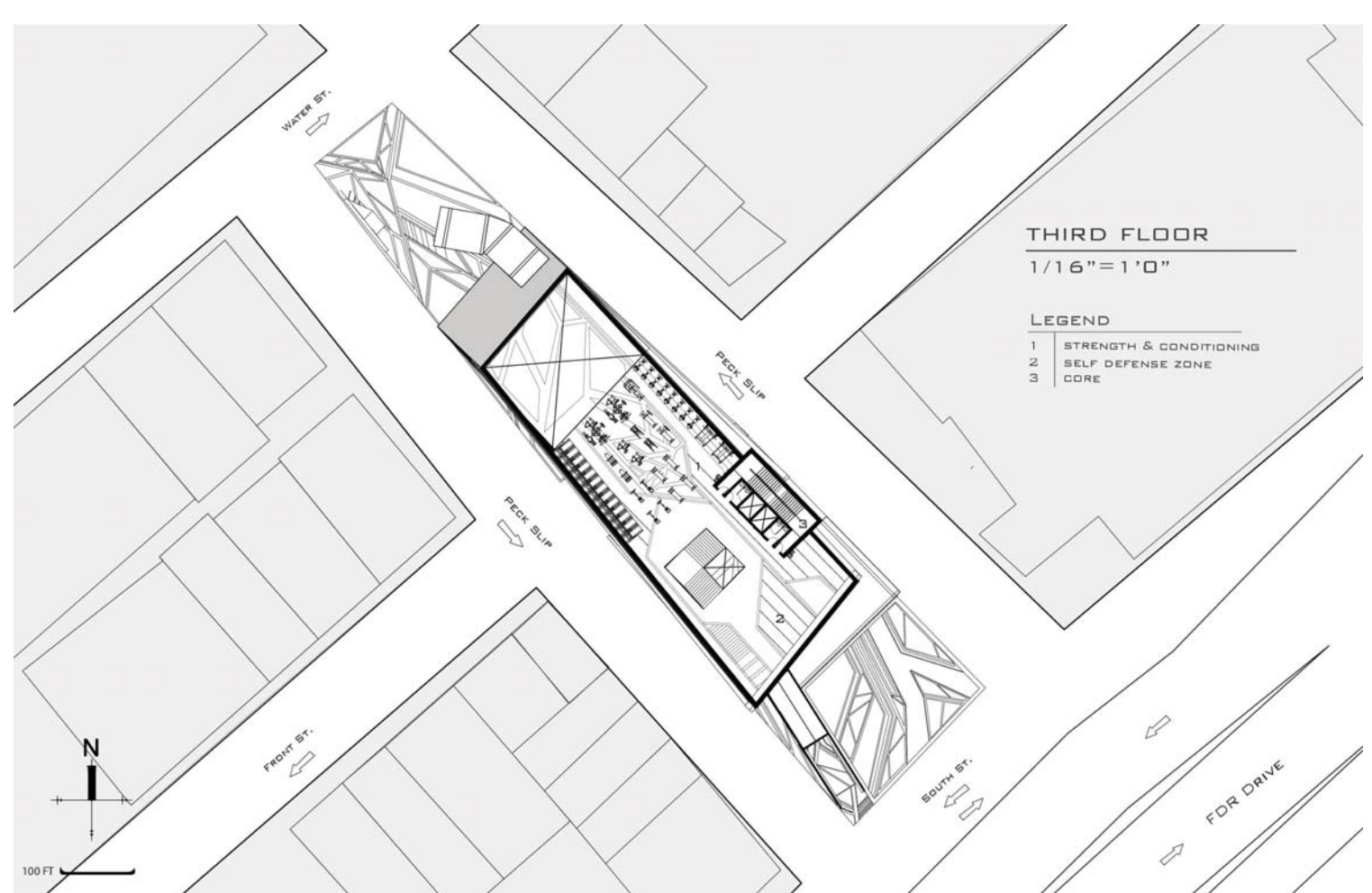
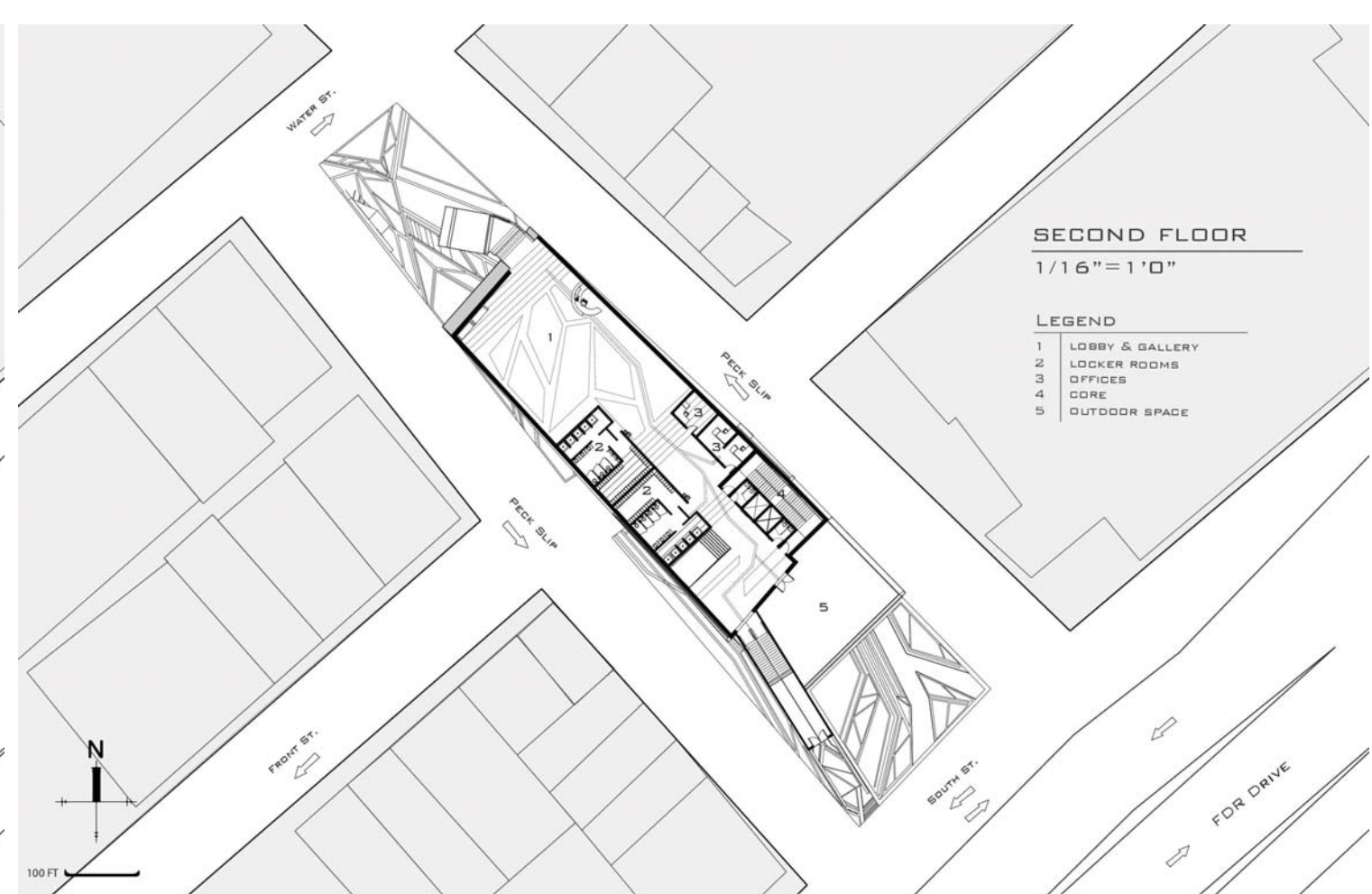
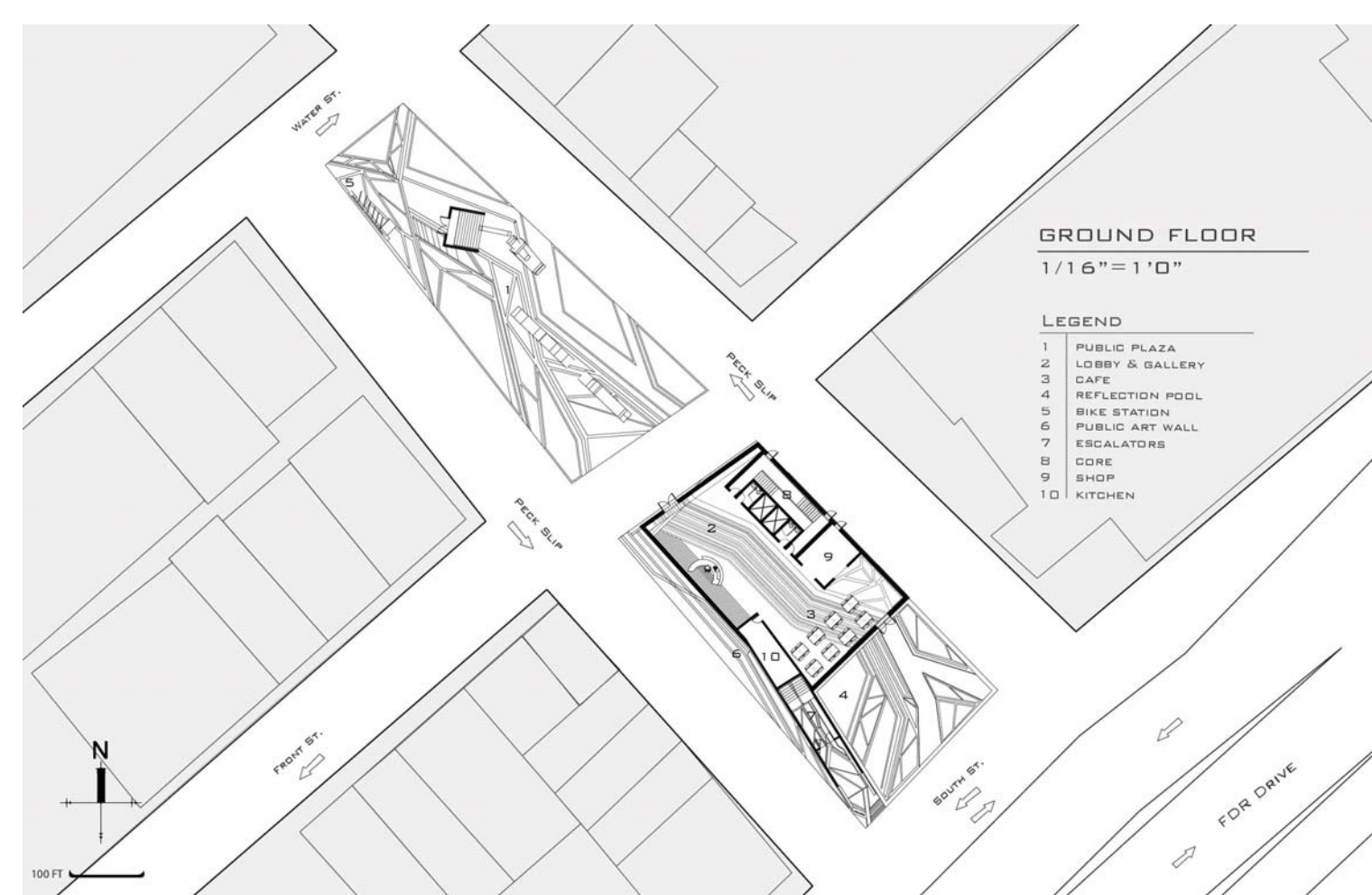
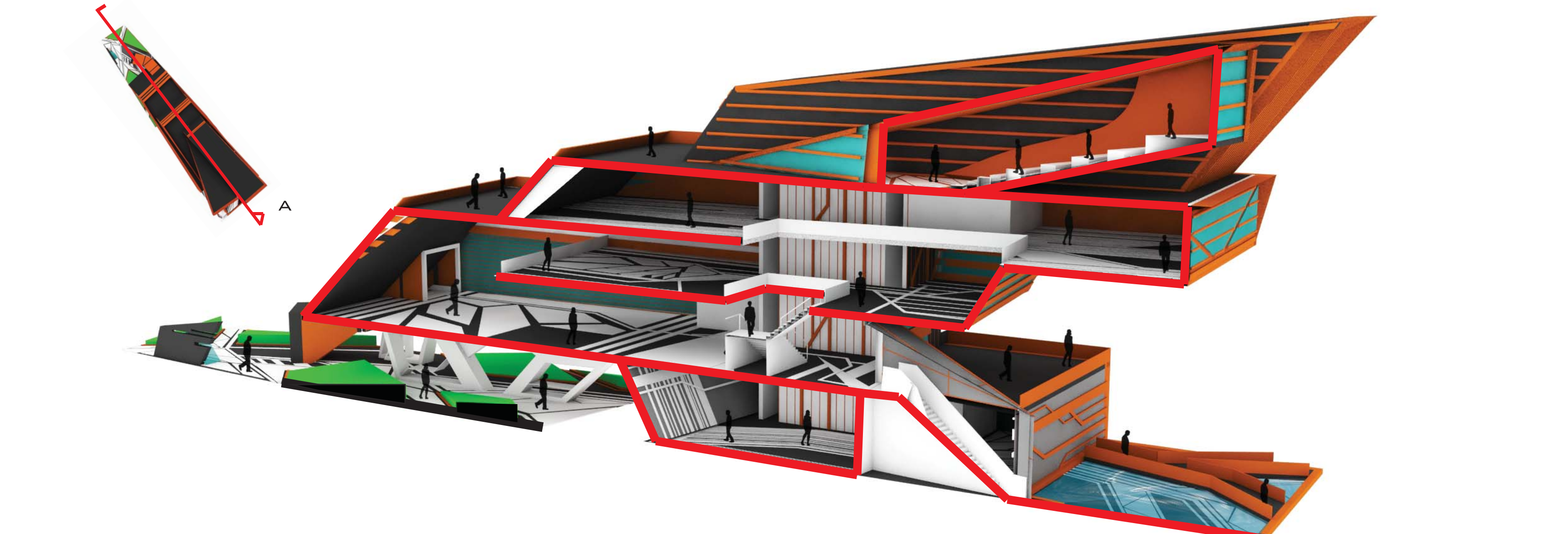
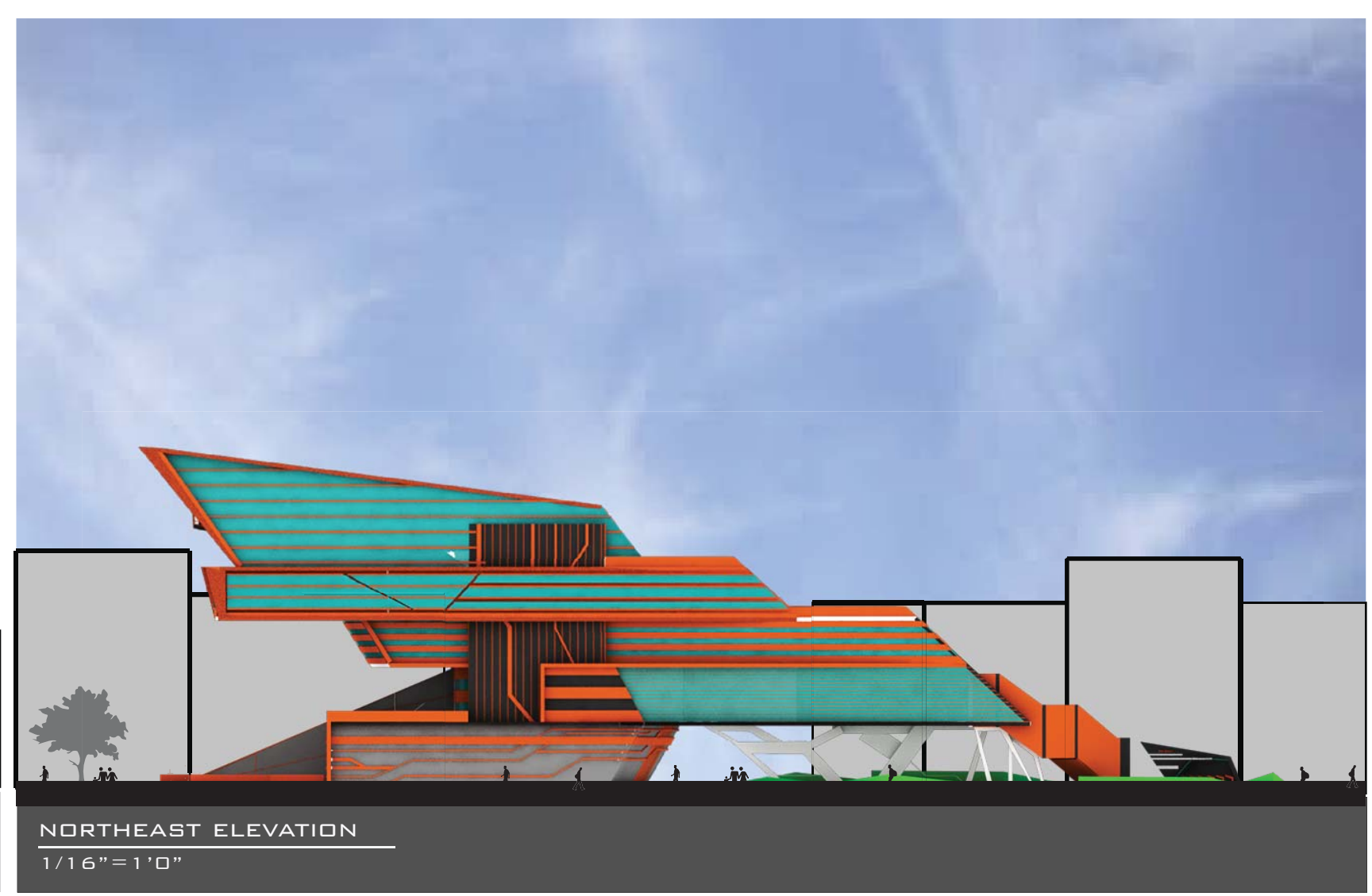
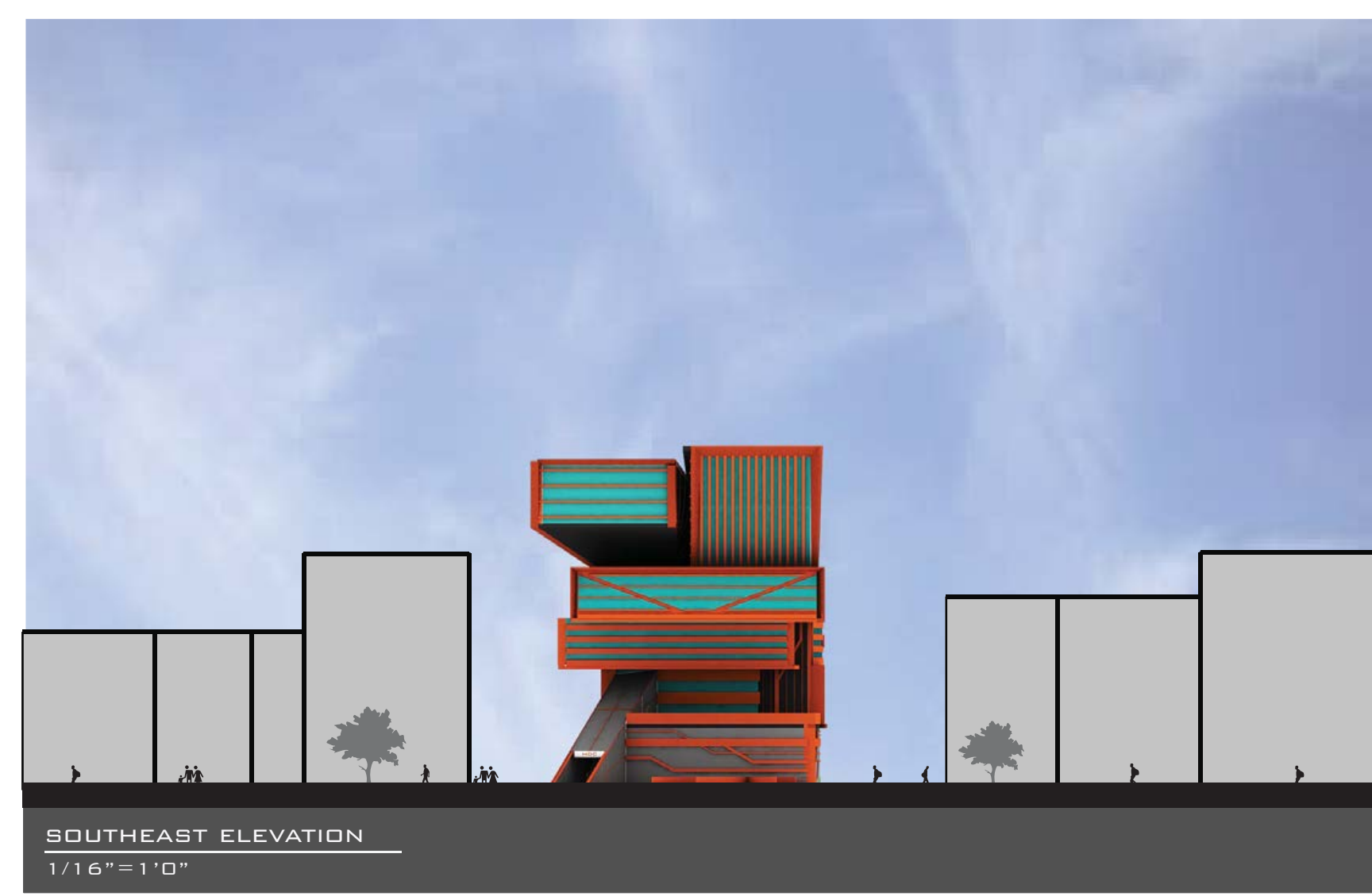
SOUTH STREET ENTRANCE

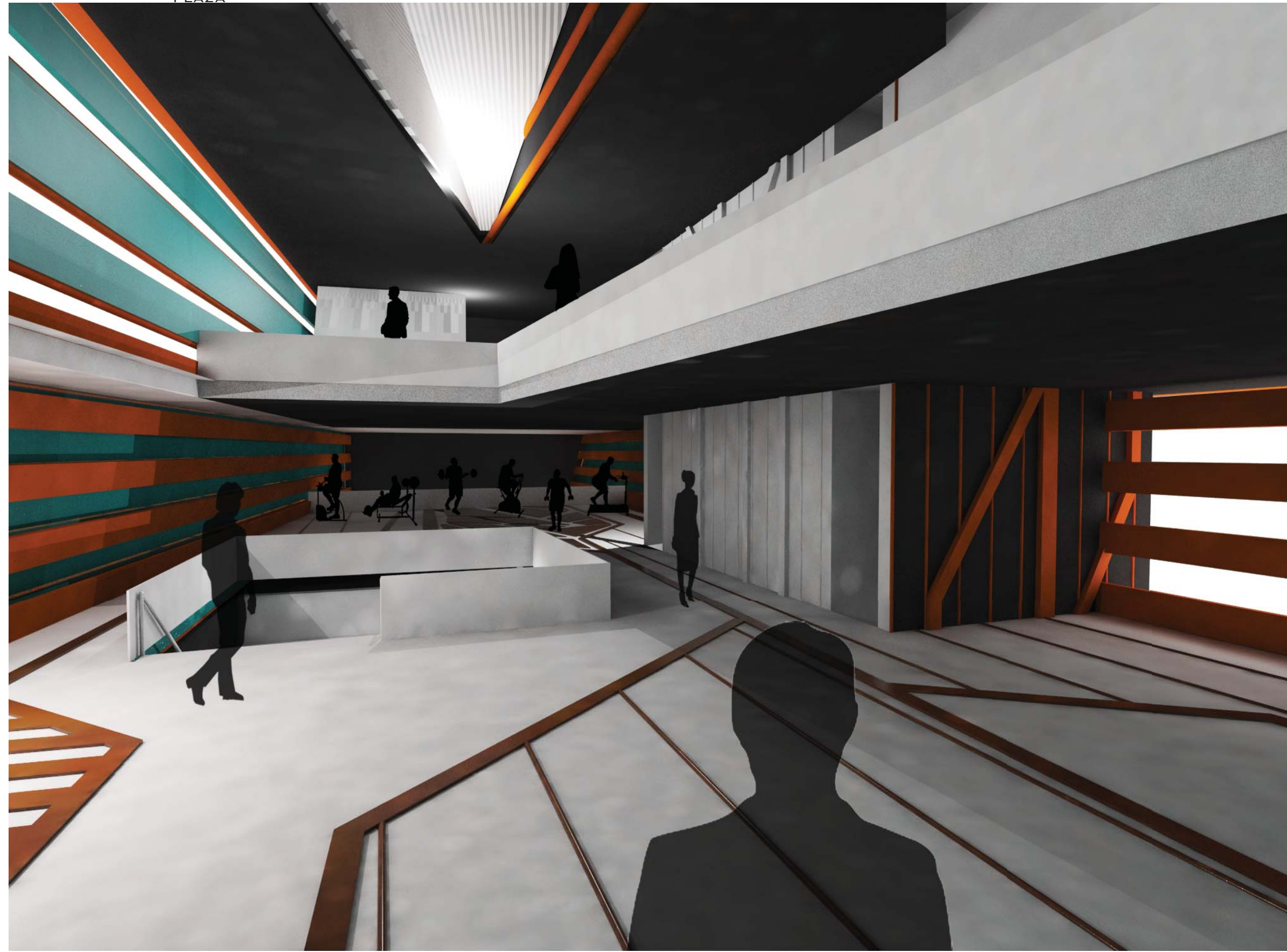


REFLECTION POOL

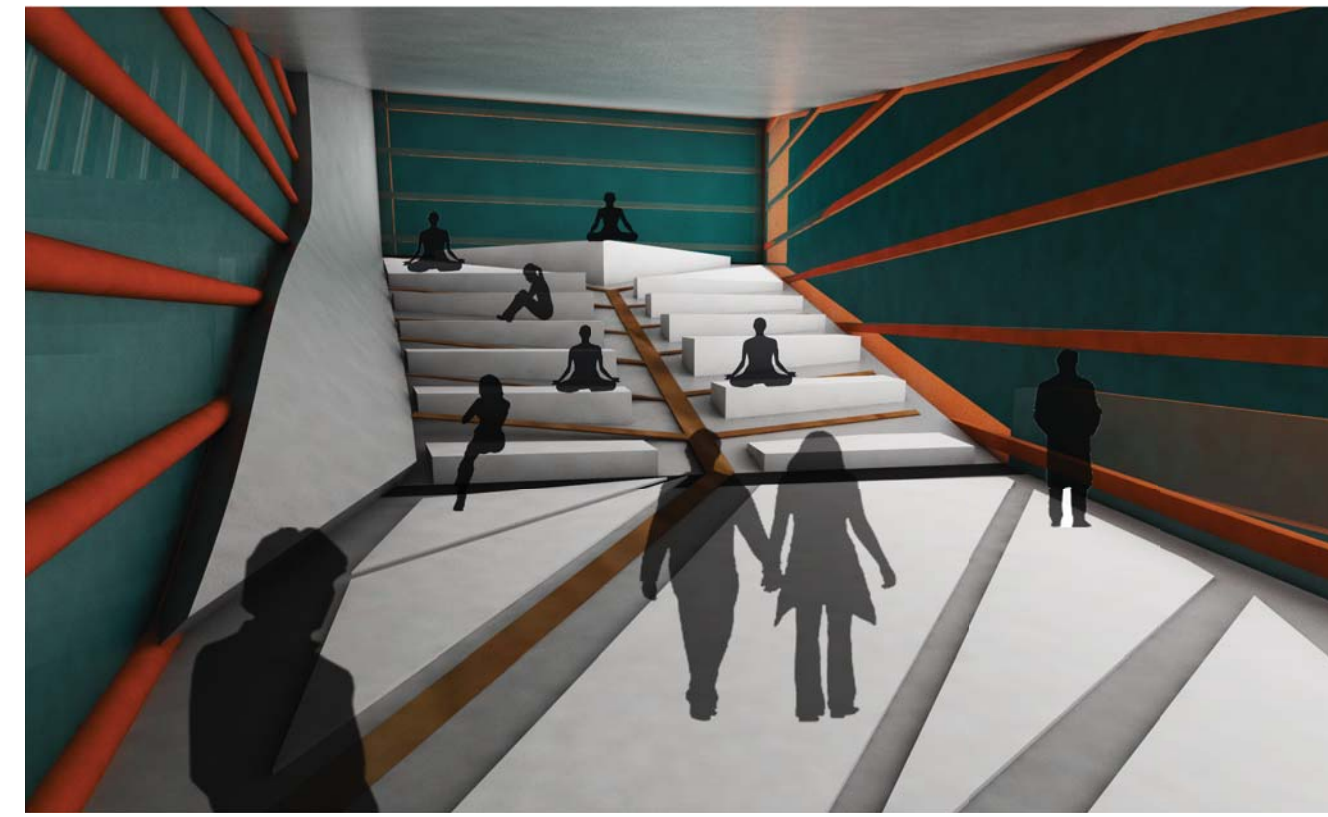


WATER STREET PERSPECTIVE





GYM



MEDITATION



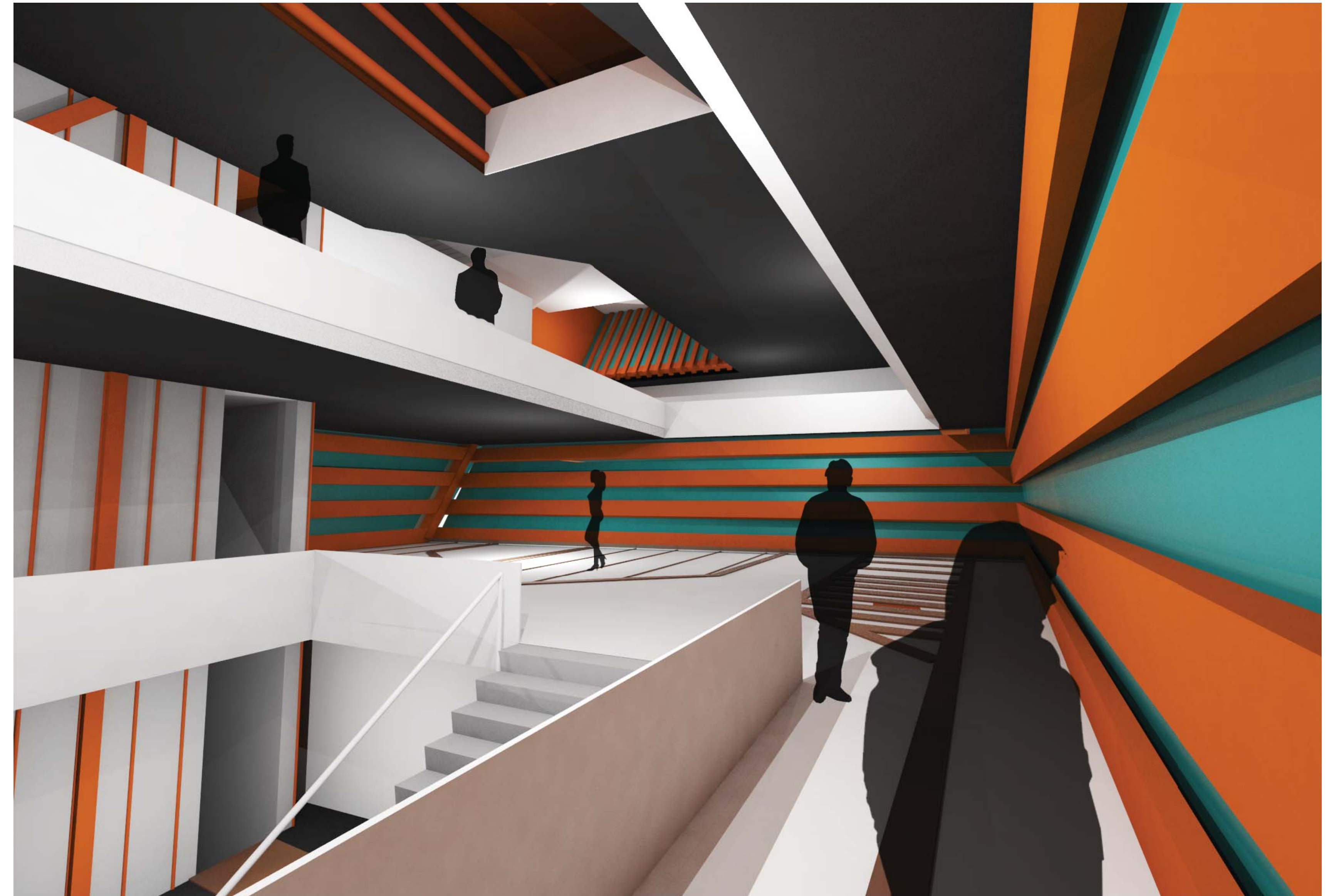
MAIN LOBBY & GALLERY



LIBRARY



GROUND LEVEL GALLERY & CAFE



GYM



EDGE COLLAGE

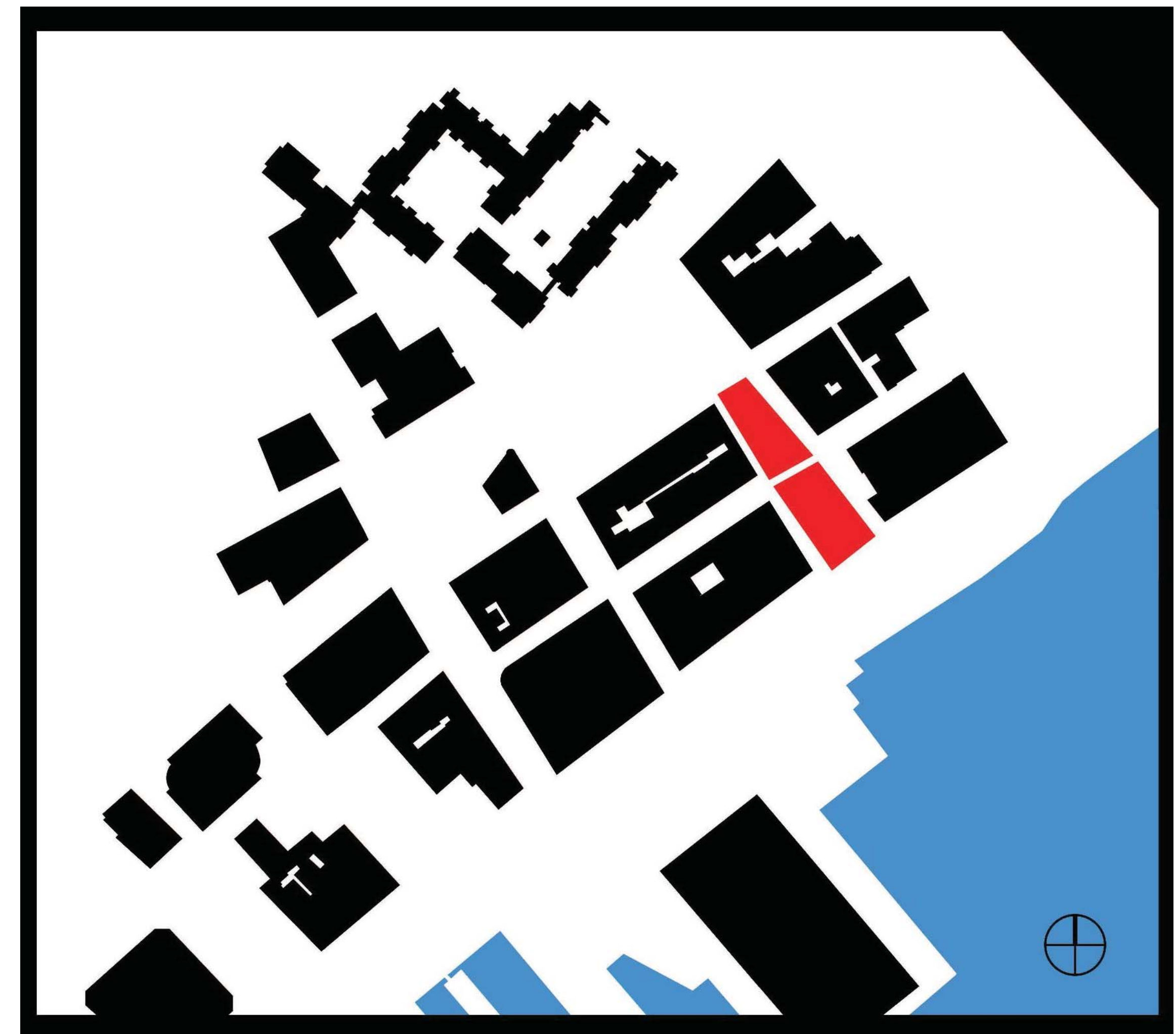


SITE IMPRESSION COLLAGE



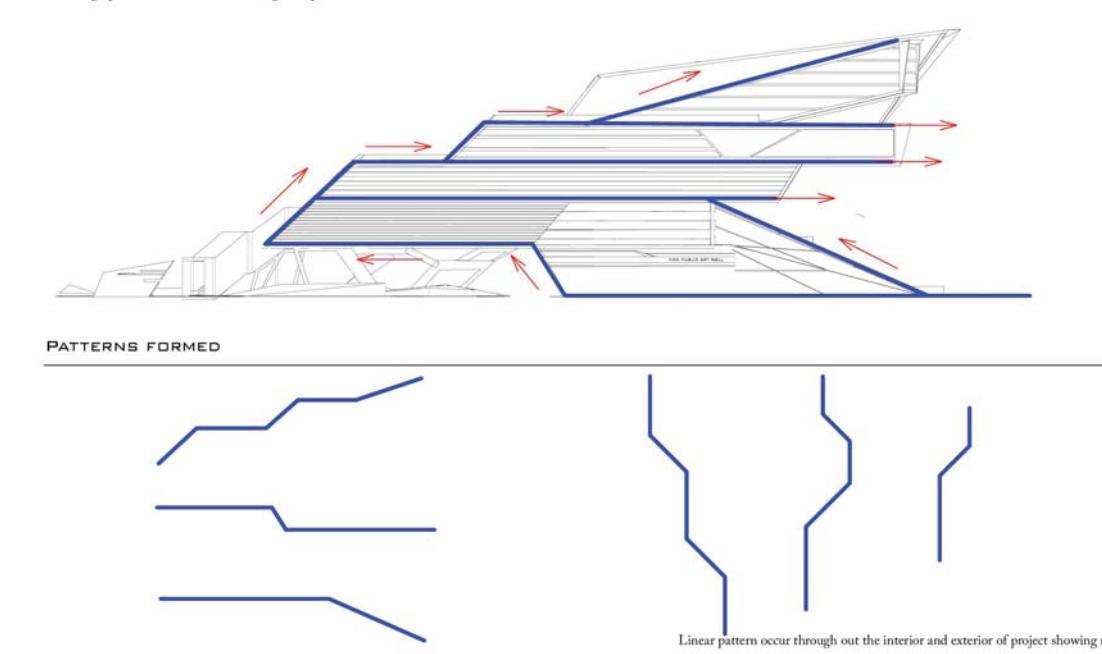
PROGRAM COLLAGE

CONCEPT COLLAGES



RISING CONCEPT

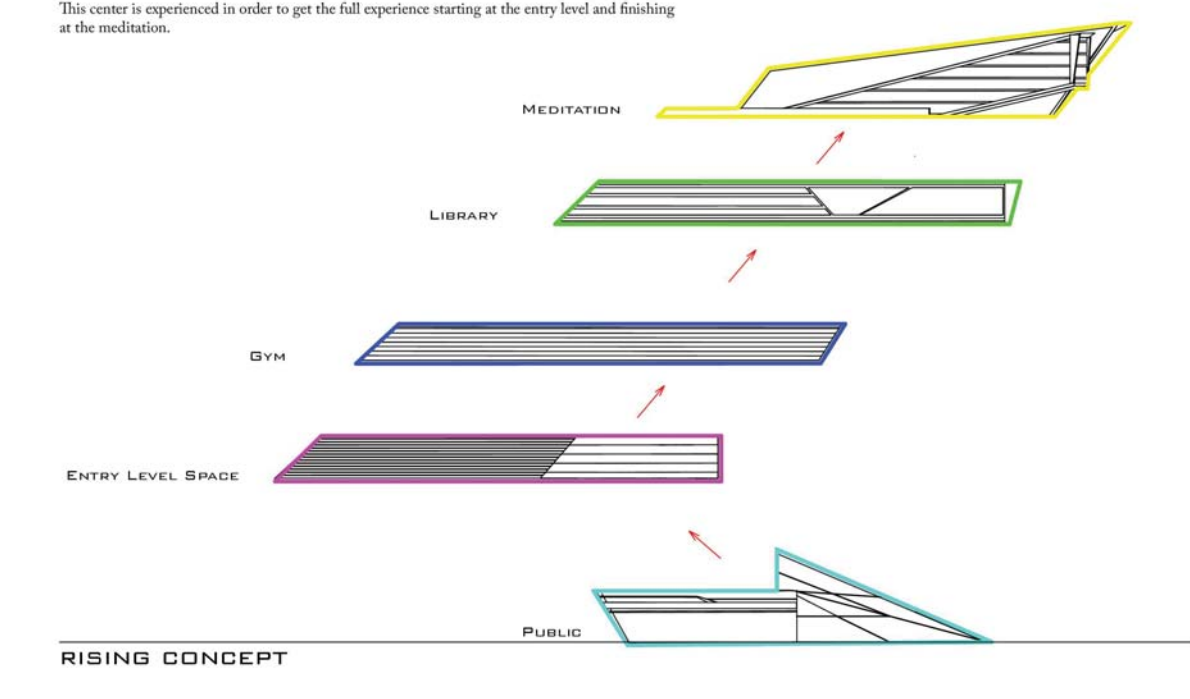
The concept of rising is a driving force for this project. Design patterns are formed from rising in sequence.



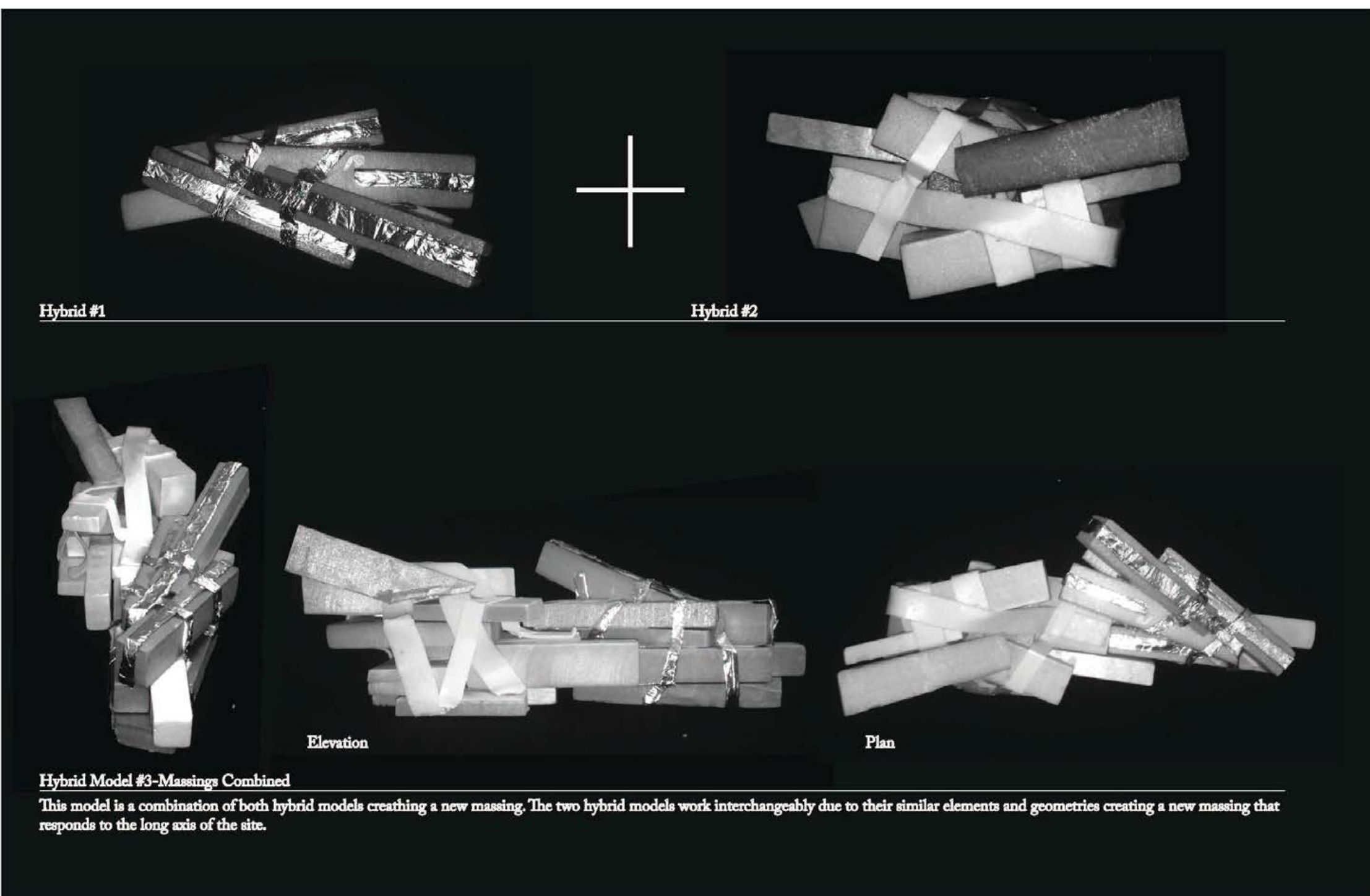
PATTERNS FORMED

Linear patterns occur through out the interior and exterior of project showing rising.

As the massing rises in elevation, the density of the surfaces decreases and opens up to the views. This center is experienced in order to get the full experience starting at the entry level and finishing at the meditation.



RISING CONCEPT



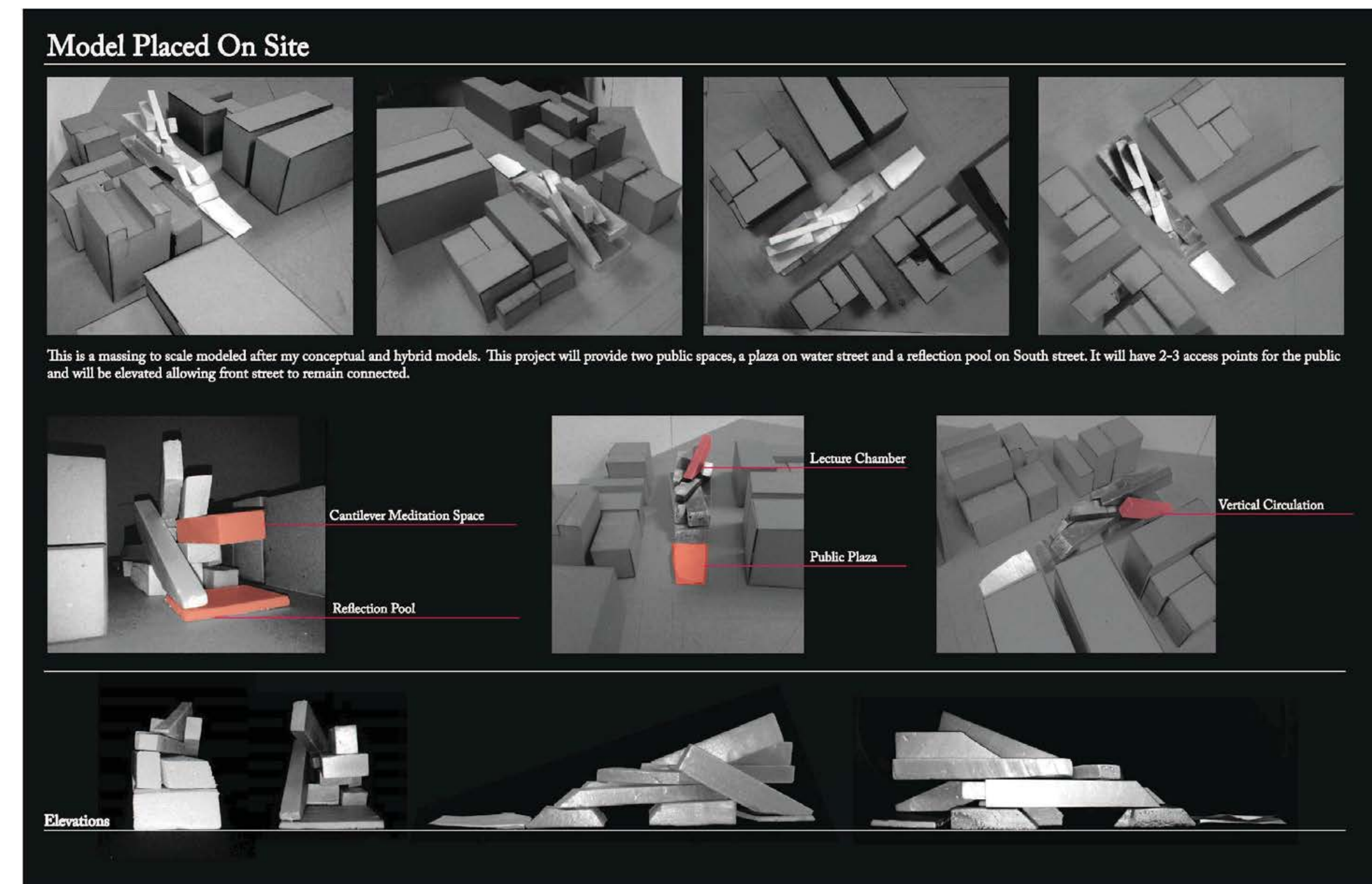
Hybrid #1

Hybrid #2

Elevation

Plan

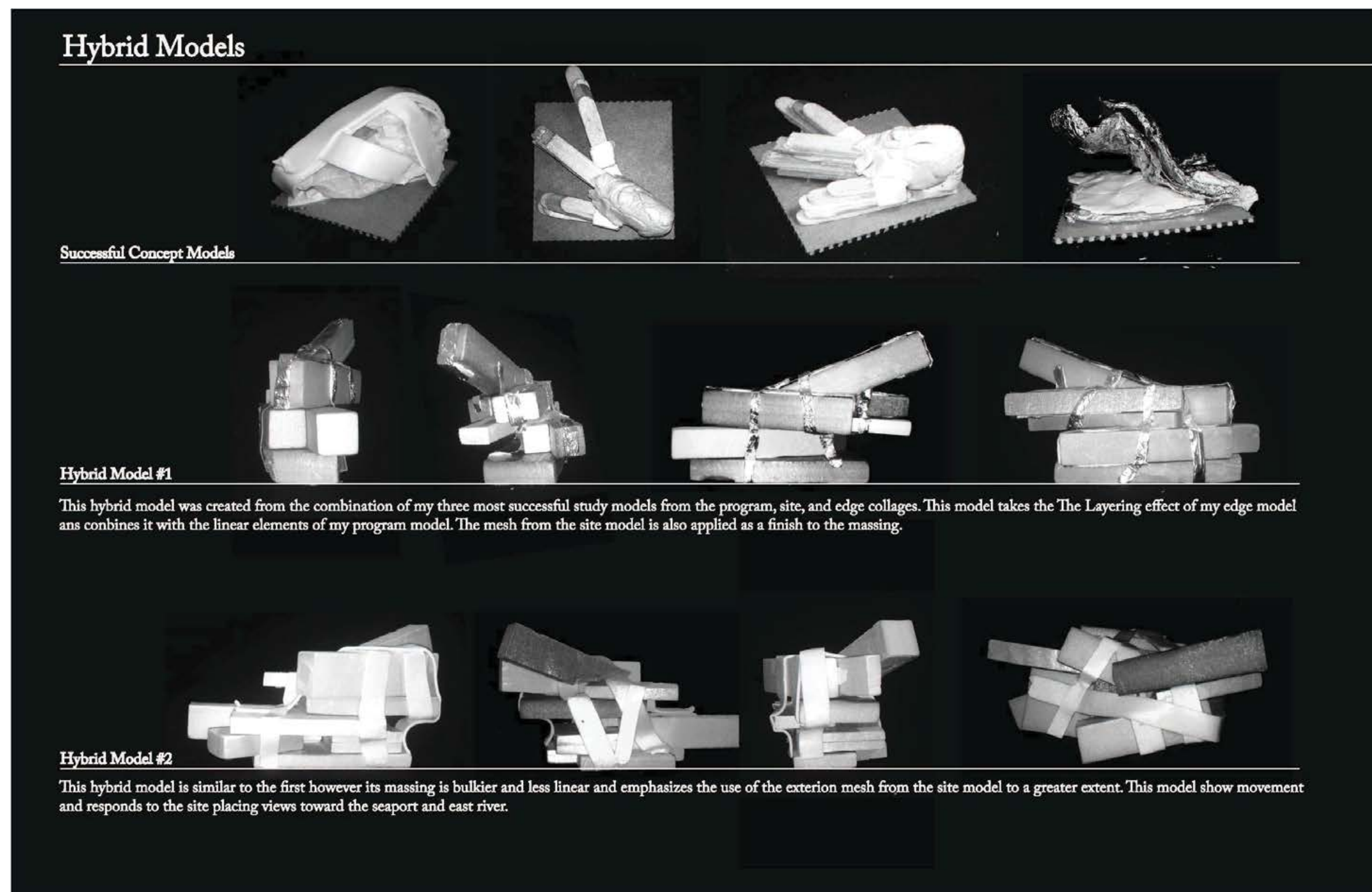
Hybrid Model #3-Massings Combined
This model is a combination of both hybrid models creating a new massing. The two hybrid models work interchangeably due to their similar elements and geometries creating a new massing that responds to the long axis of the site.



Model Placed On Site

This is a massing to scale modeled after my conceptual and hybrid models. This project will provide two public spaces, a plaza on water street and a reflection pool on South street. It will have 2-3 access points for the public and will be elevated allowing front street to remain connected.

Elevations



Hybrid Models

Successful Concept Models

Hybrid Model #1

This hybrid model was created from the combination of my three most successful study models from the program, site, and edge collages. This model takes the 'The Layering' effect of my edge model and combines it with the linear elements of my program model. The mesh from the site model is also applied as a finish to the massing.

Hybrid Model #2

This hybrid model is similar to the first however its massing is bulkier and less linear and emphasizes the use of the exterior mesh from the site model to a greater extent. This model show movement and responds to the site placing views toward the seaport and east river.

