

# Hotel Lobby and Rooms

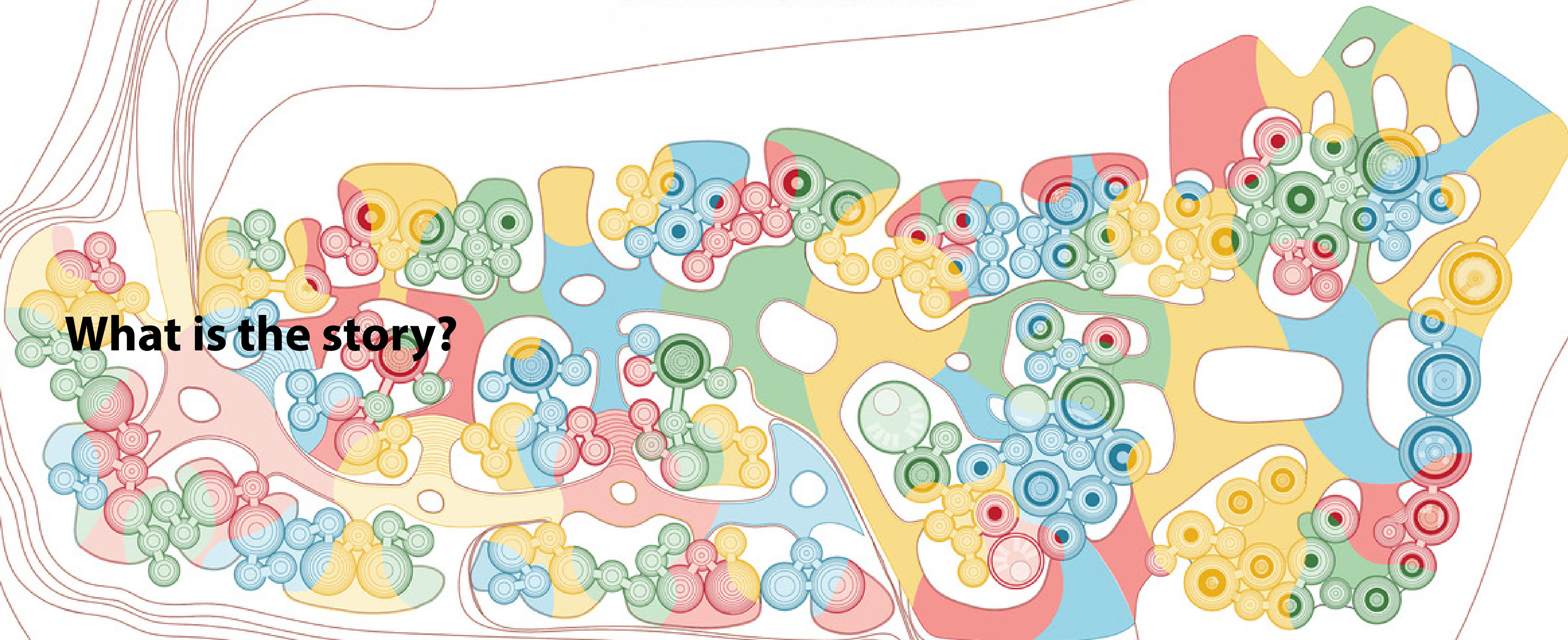
What is the story?

How can the theme of my hotel influence my design?

Who will be using my hotel?

TOPOGRAPHIC PLAN OF MAJARA RESIDENCE IN ITS CONTEXT

**What is the story?**





Presence | Hormuz

The story will give you direction

The story will make your design consistent

The story will make your design interesting

The site and your theme are unique giving you the opportunity to come up with an engaging story to inform your design

**How can the theme of my hotel influence my design?**

What are some compatible activities with my theme?

What is my color and material palette?

Is there a specific style I am interested in?

What kind of atmosphere I want to create?

**Who will be using my hotel?**



# Lobby

What is the purpose of a lobby?

A hotel lobby's purpose is to greet, check in, and serve the needs of your guests.

The needs of your guests will be unique to your location, the structure of your hotel, your brand, and the types of customers you serve.

The lobby should direct your guests with ease to their rooms



TWA | NYC

The image shows a modern, circular lobby with a dark, textured ceiling and a large circular skylight. The space is furnished with brown leather chairs and a wooden reception desk. A large window in the center provides a view of a lush green outdoor area. The text "Andaz Mayakoba | Riviera Maya" is overlaid in the center of the image.

Andaz Mayakoba |  
Riviera Maya

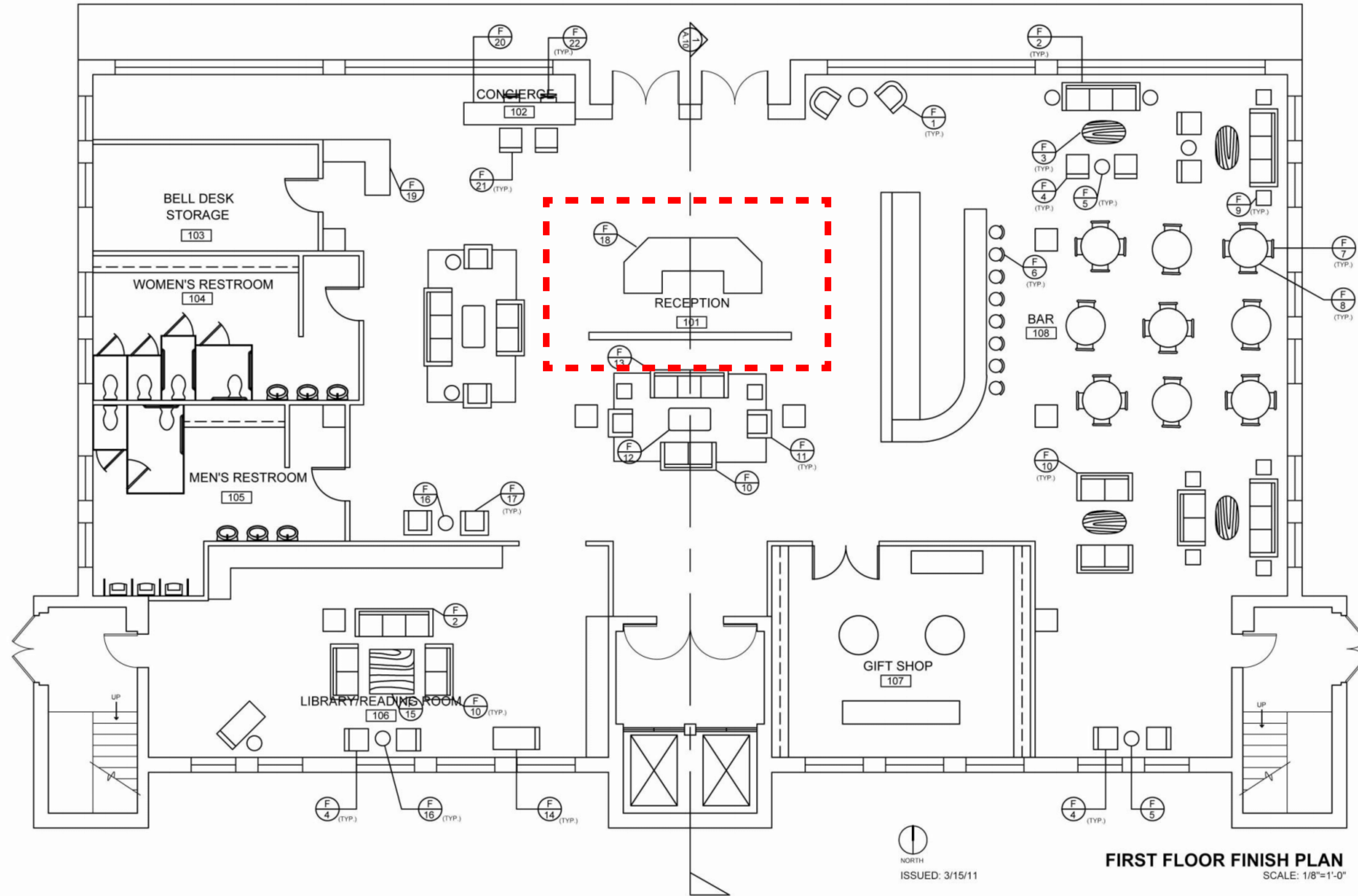
What should a hotel lobby have?

Check in / Reception desk

Waiting area / Lounge

Access to bathrooms

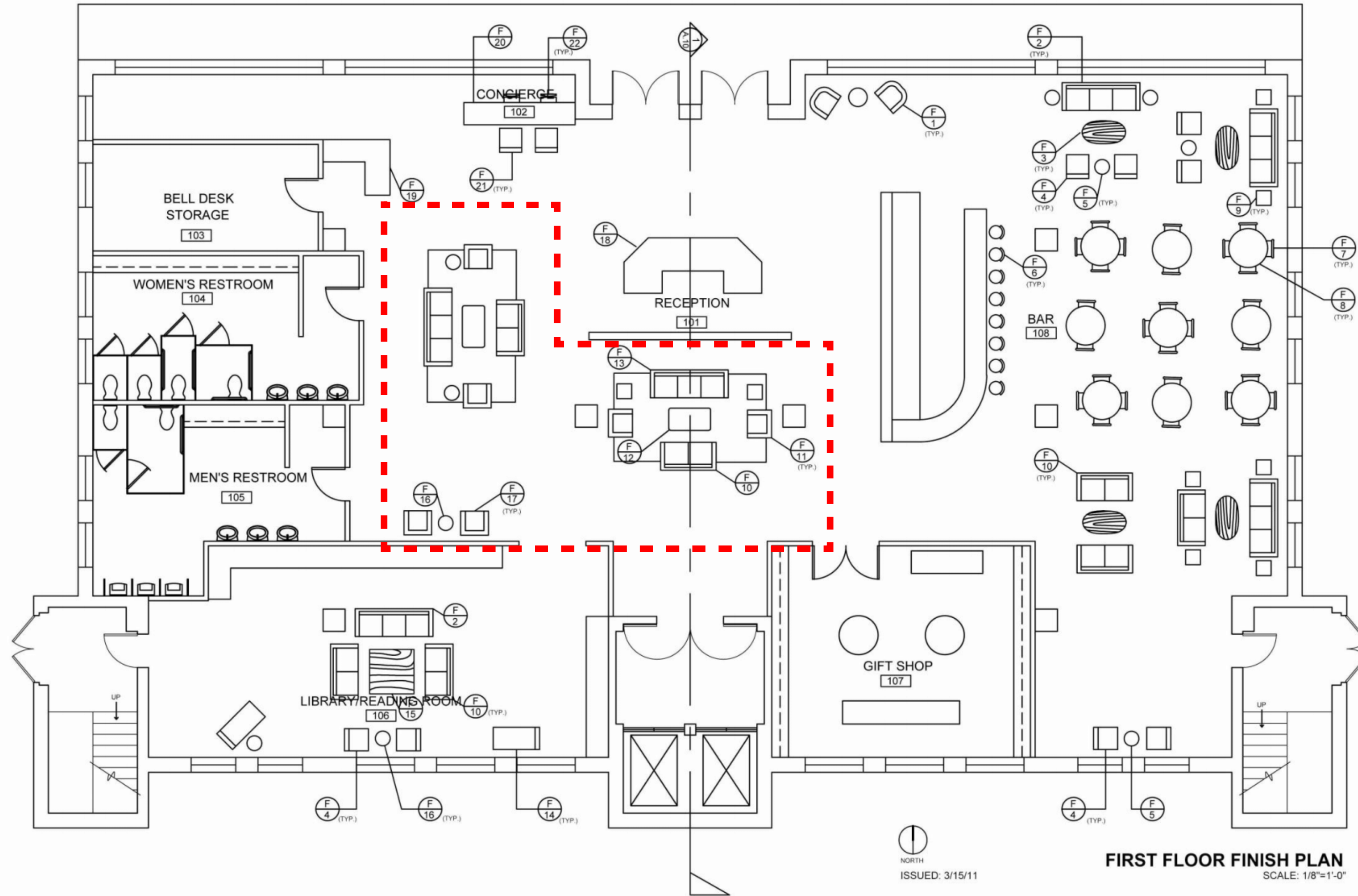
Functioning circulation



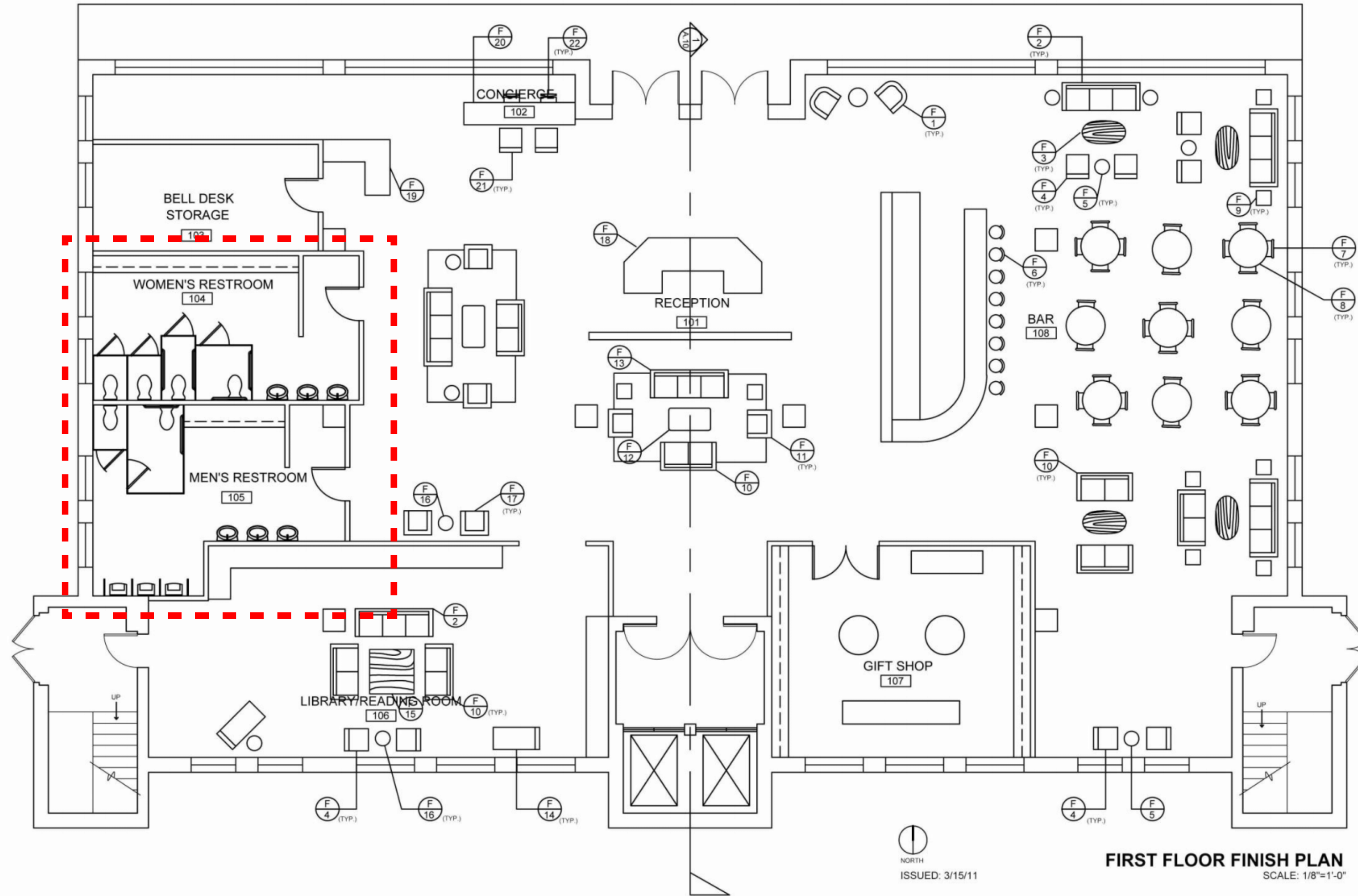
**FIRST FLOOR FINISH PLAN**  
SCALE: 1/8"=1'-0"

NORTH  
ISSUED: 3/15/11

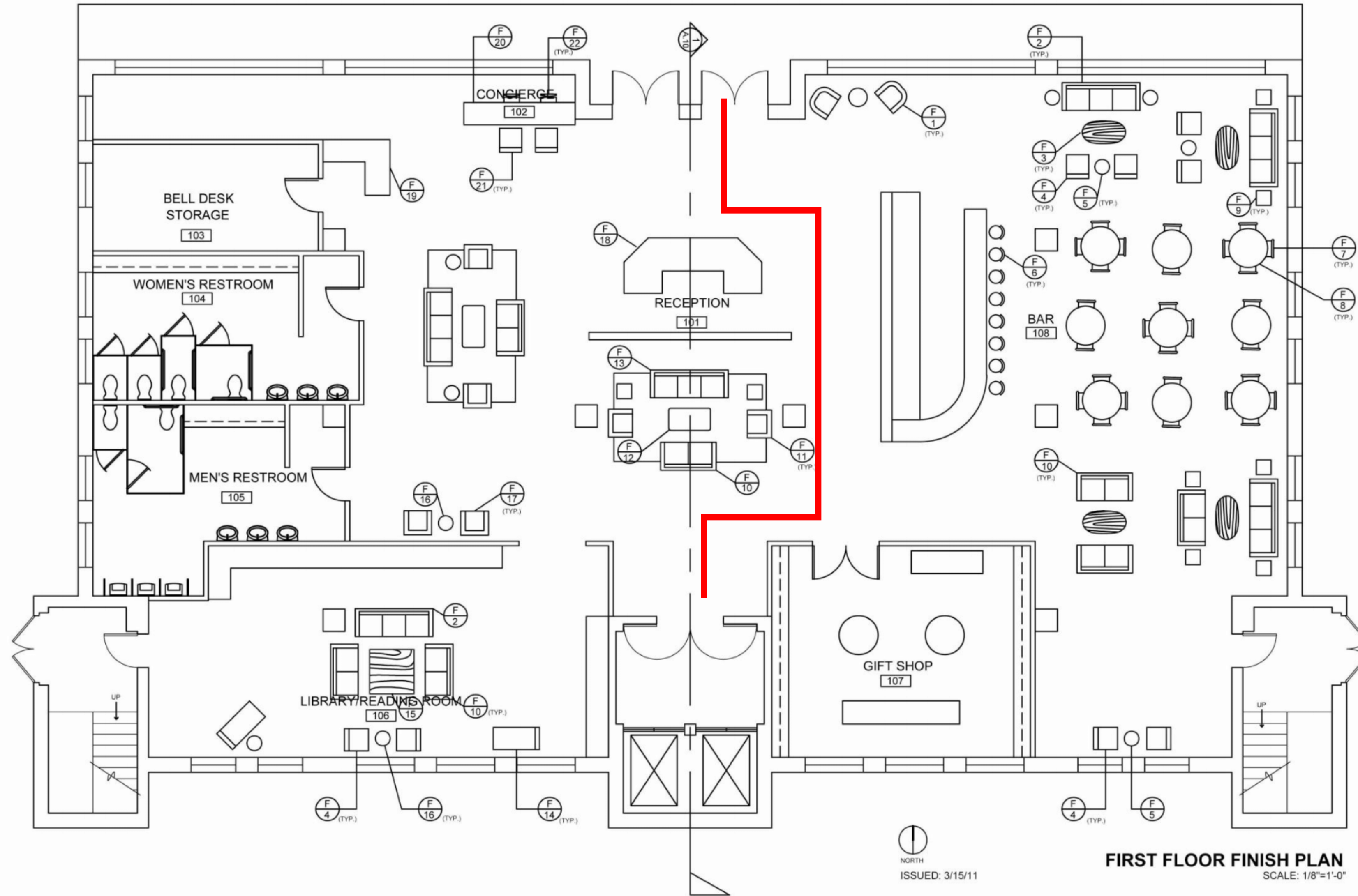




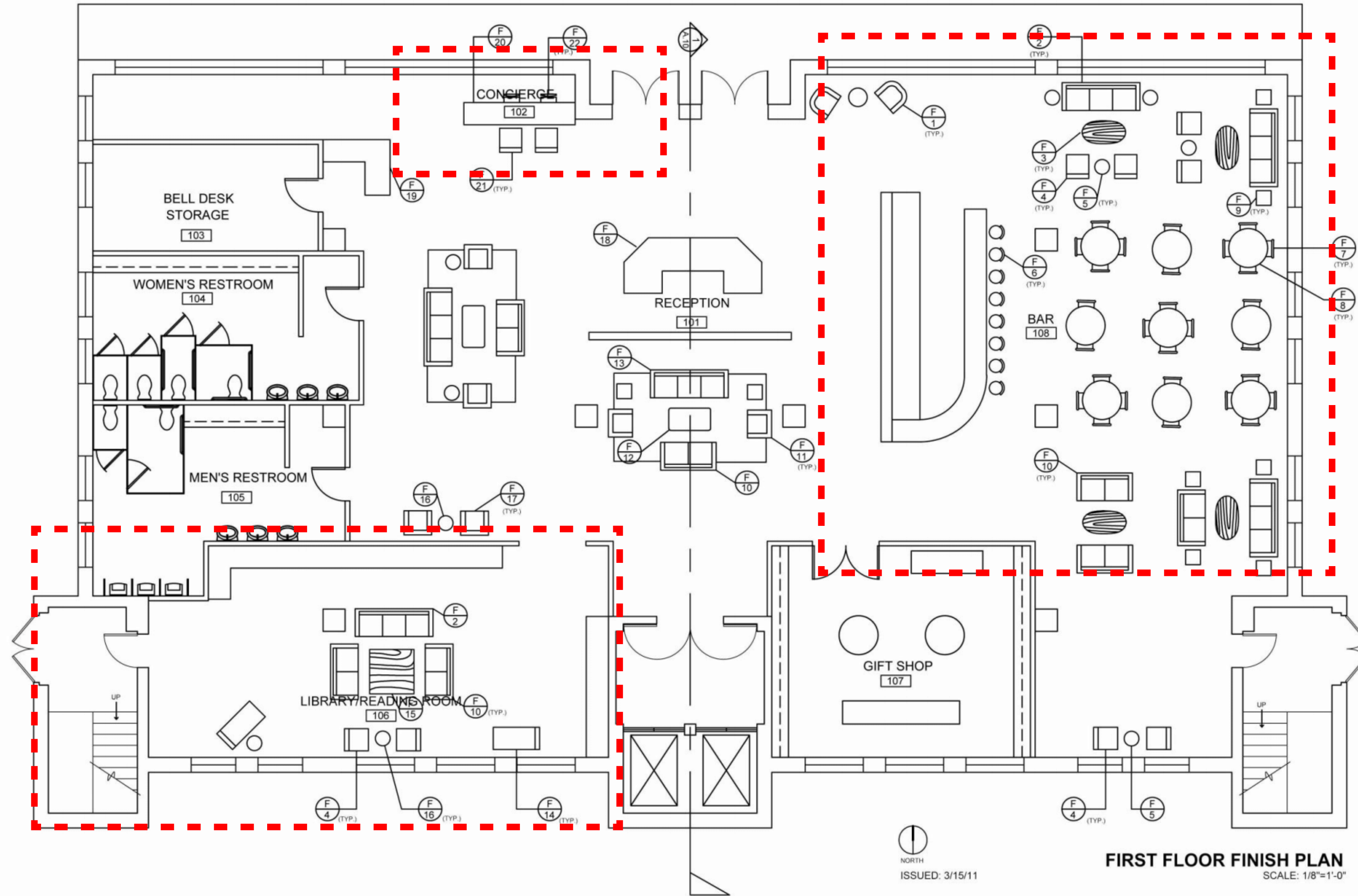
**FIRST FLOOR FINISH PLAN**  
SCALE: 1/8"=1'-0"



**FIRST FLOOR FINISH PLAN**  
SCALE: 1/8"=1'-0"

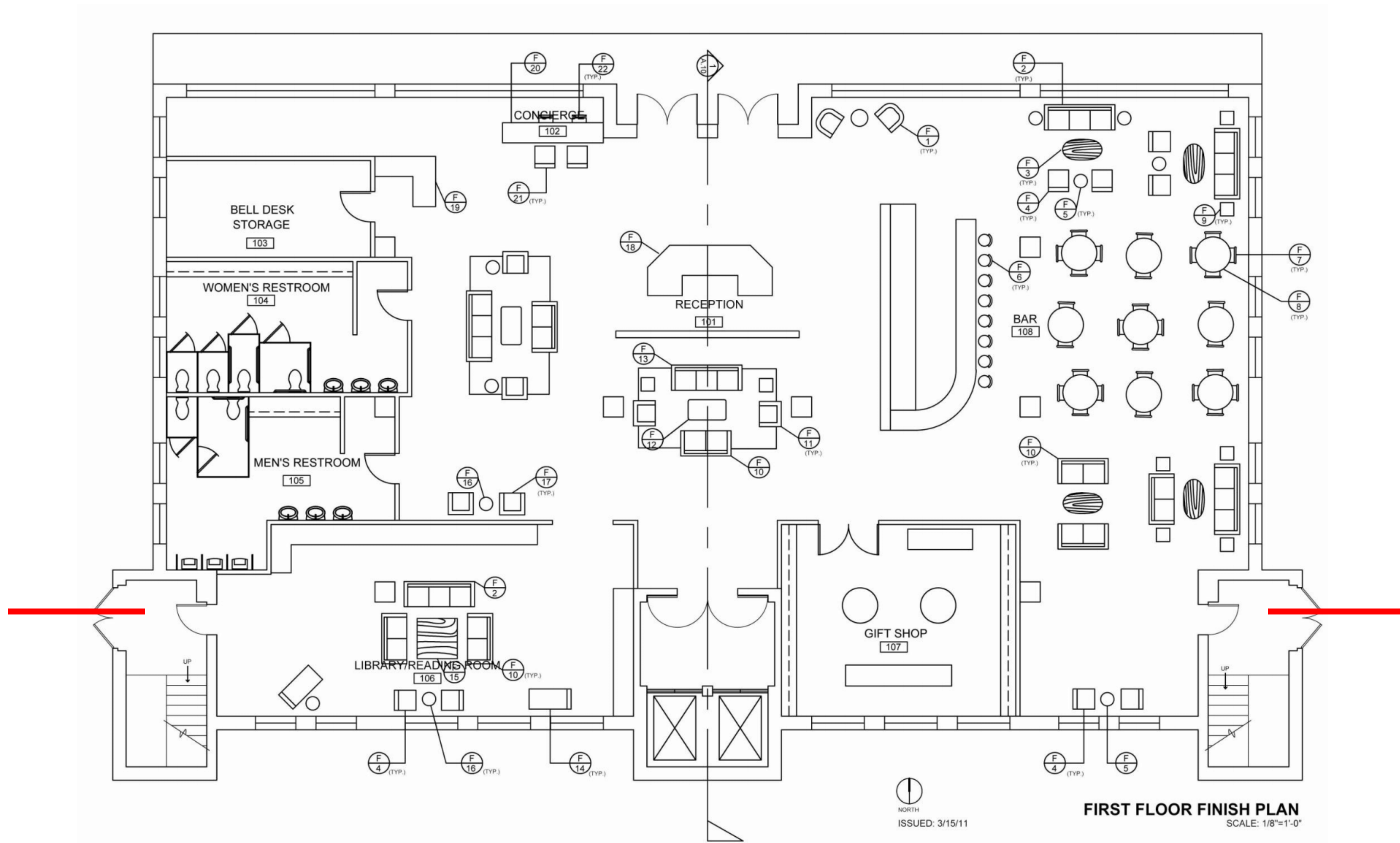


**FIRST FLOOR FINISH PLAN**  
SCALE: 1/8"=1'-0"



**FIRST FLOOR FINISH PLAN**  
SCALE: 1/8"=1'-0"

NORTH  
ISSUED: 3/15/11



**FIRST FLOOR FINISH PLAN**  
SCALE: 1/8"=1'-0"

# Rooms

**Type**

**Layout**

**Elements**

**Type**



Beds:

Queen

King

Twin

Double-Double

Layout:

Standard

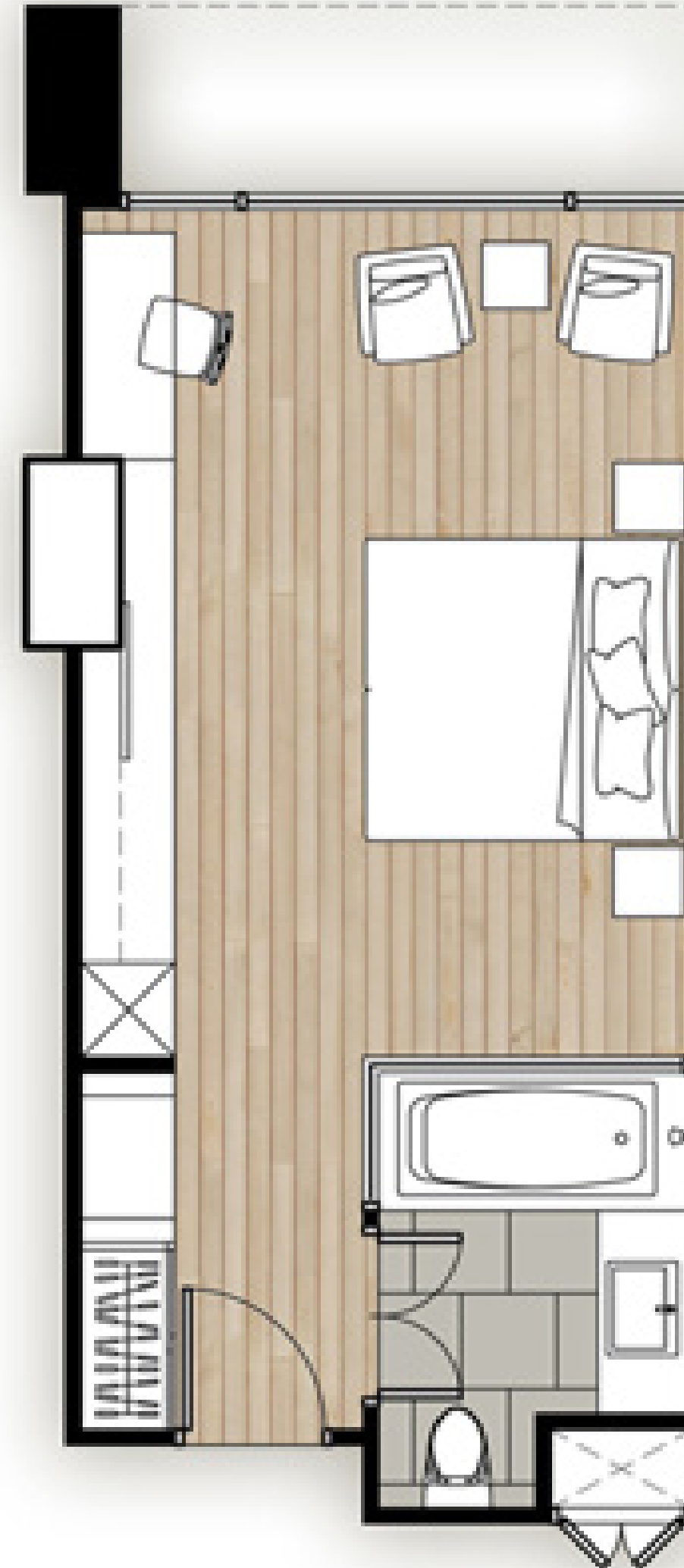
Deluxe

Connecting

Suite

Apartment

Beds  
Queen  
King



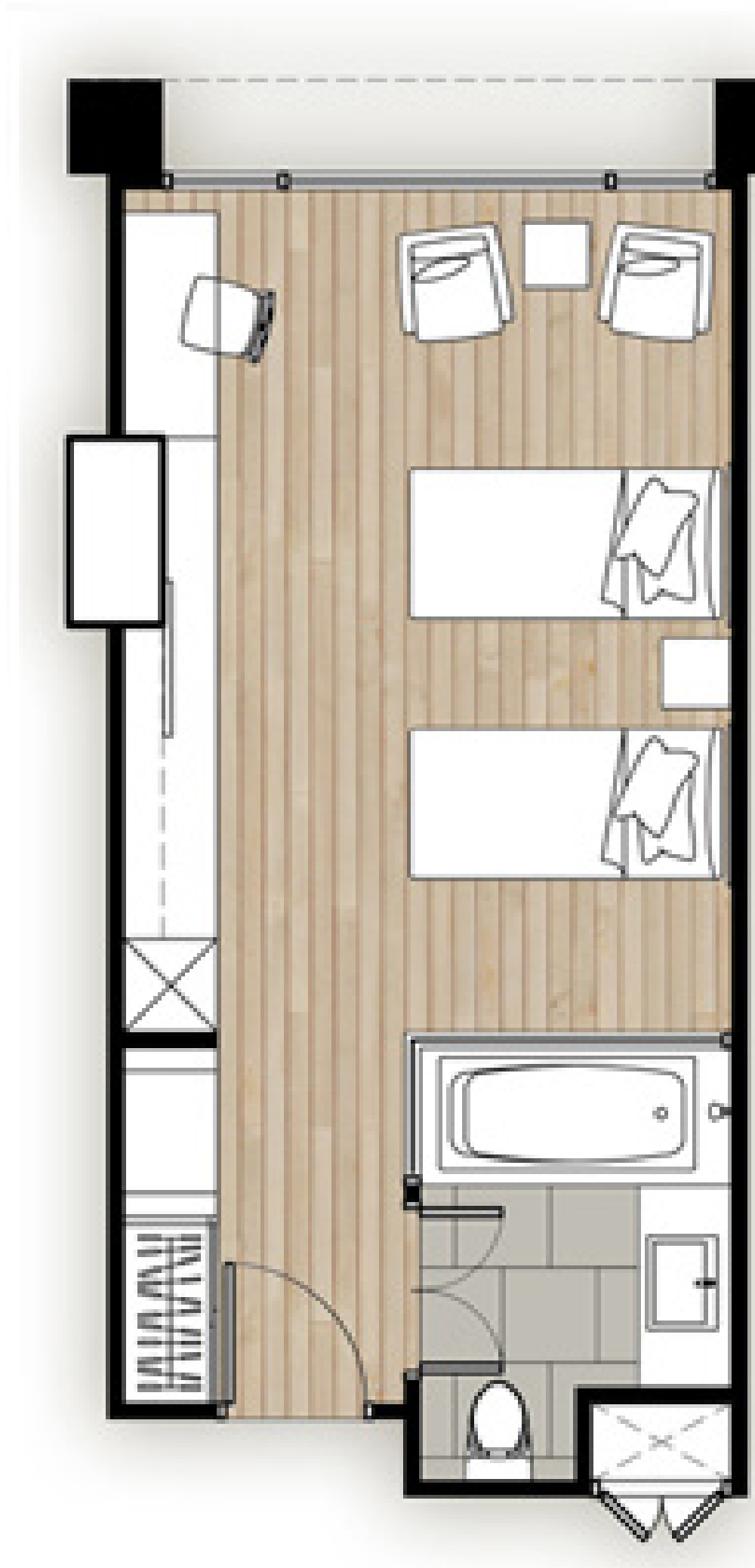
Valley Ho |  
Scottsdale Arizona



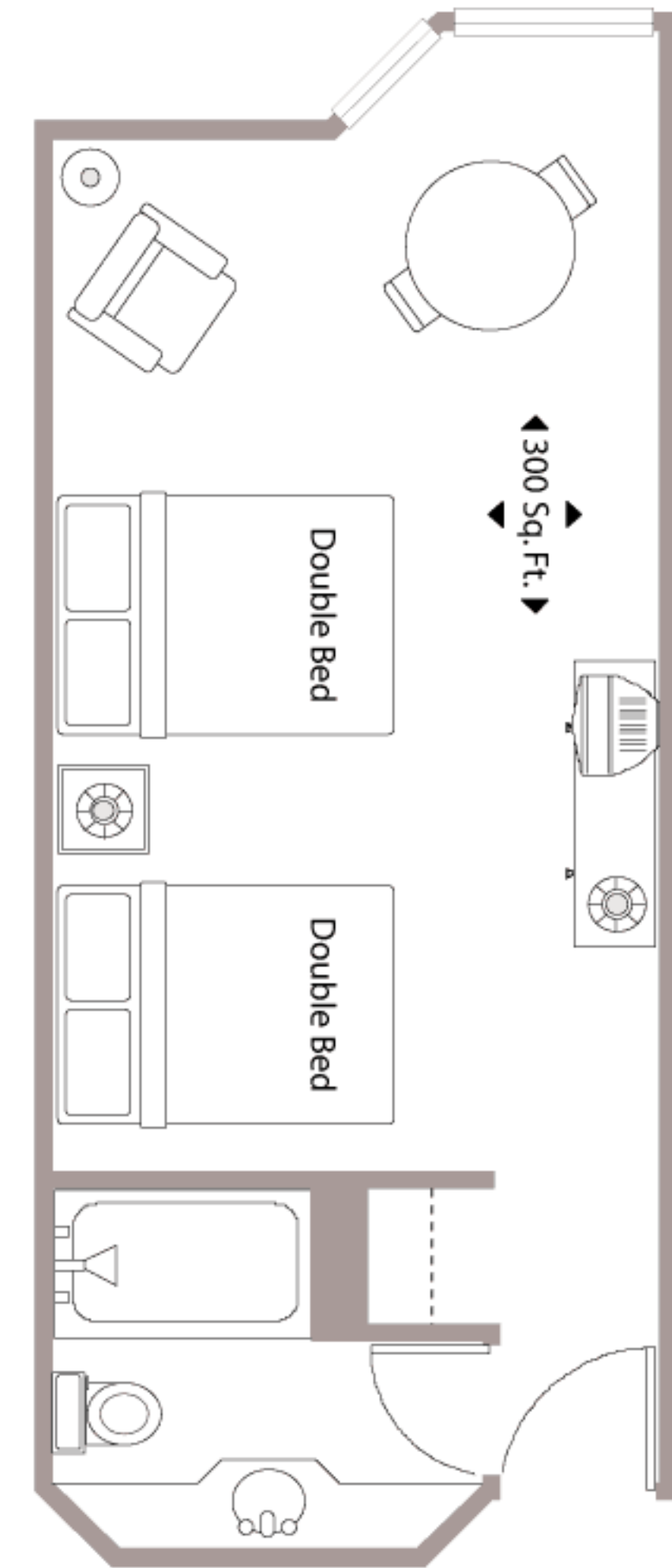
Beds

Twin

Double Double



Twin



Double-Double



Muji Hotel | Ginza

# Layout

**Standard room**

**Deluxe room**

Layout

Connecting room

Suite

Penthouse

Layout

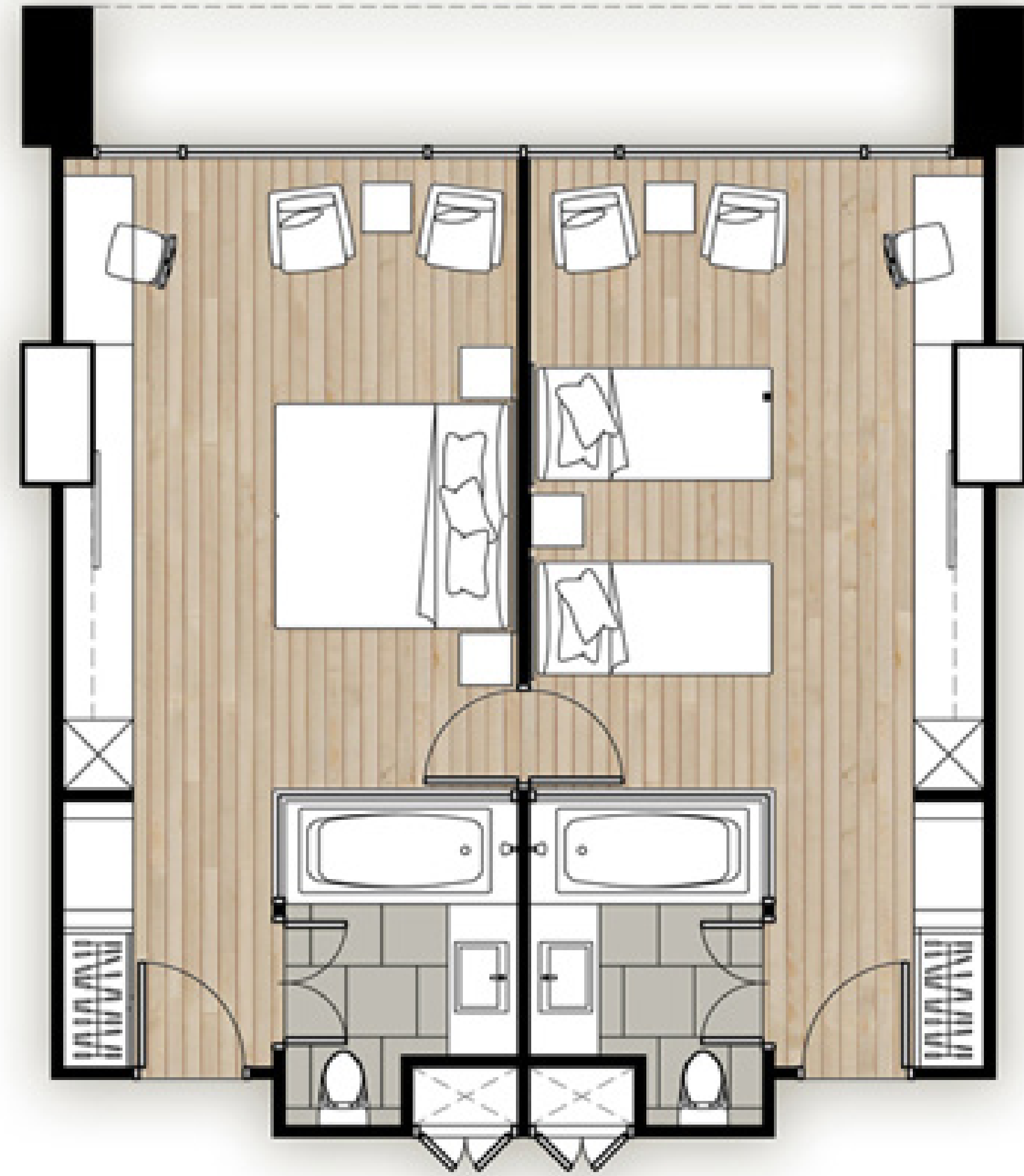
Standard room

Deluxe room

**Connecting room**

Suite

Penthouse







Layout

Standard room

Deluxe room

Connecting room

**Suite**

Penthouse





Gansevoort | NYC

Standard room

Deluxe room

Layout Connecting room

Suite

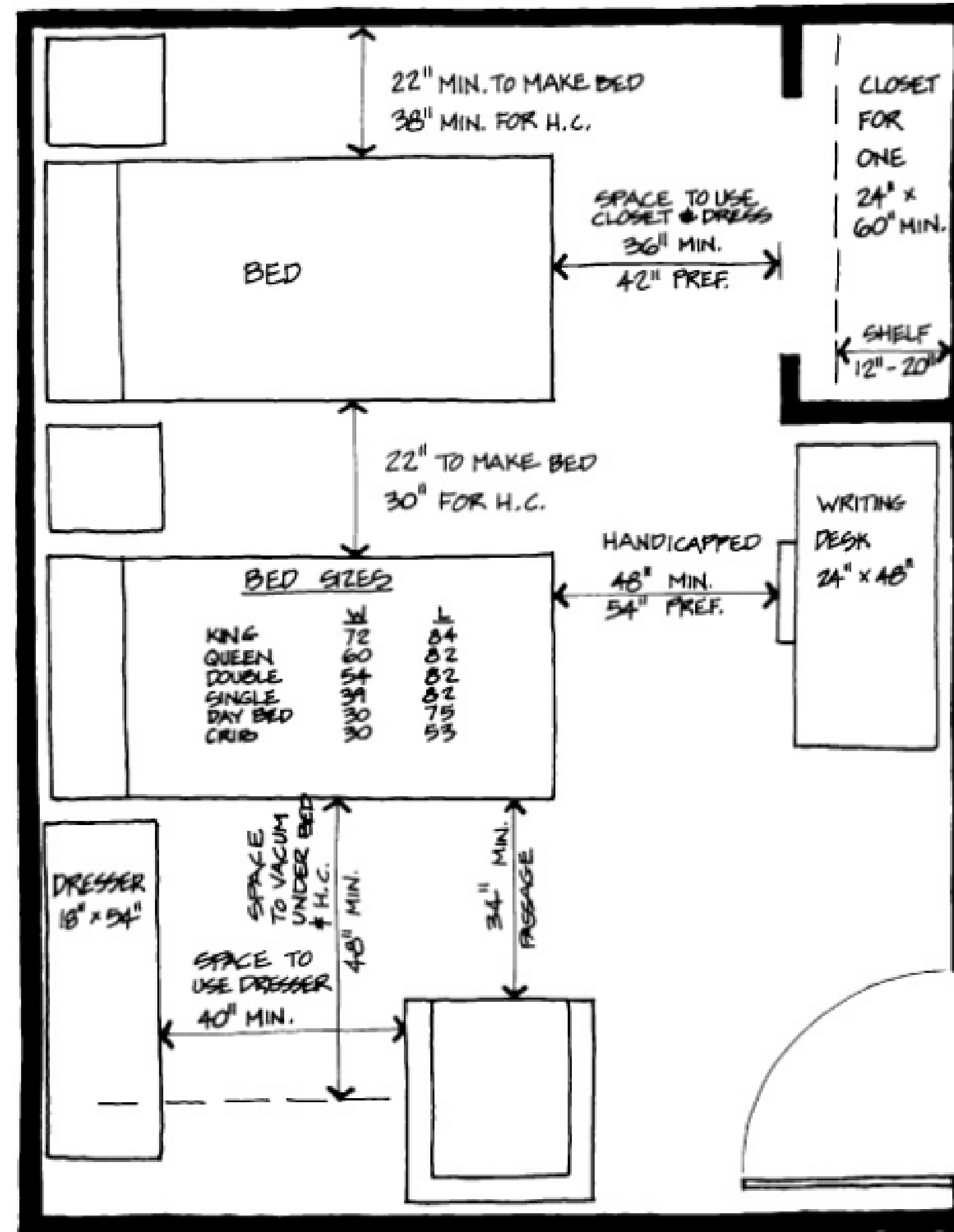
**Penthouse**



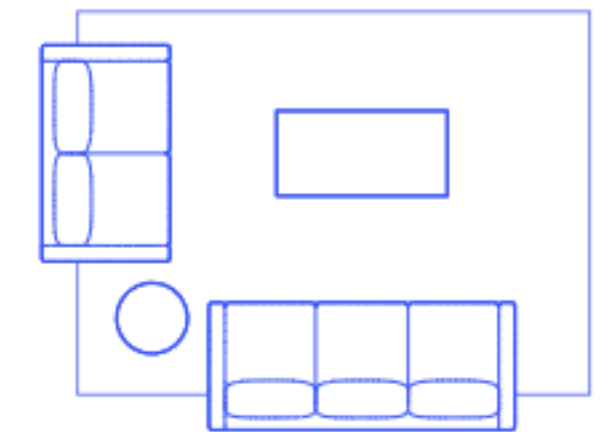
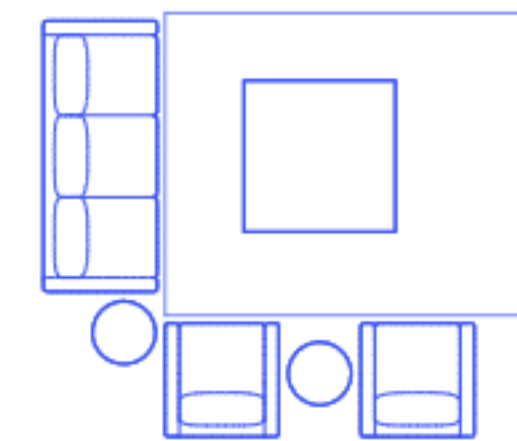
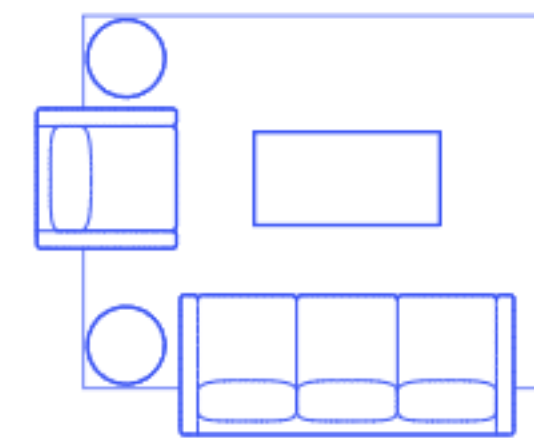
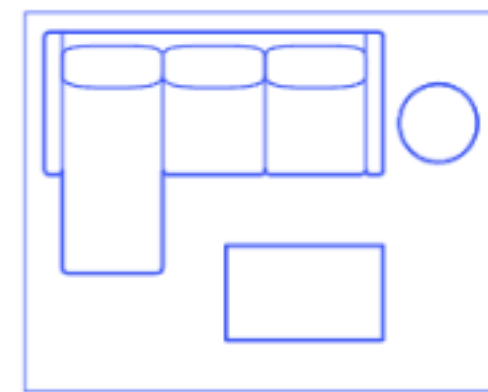
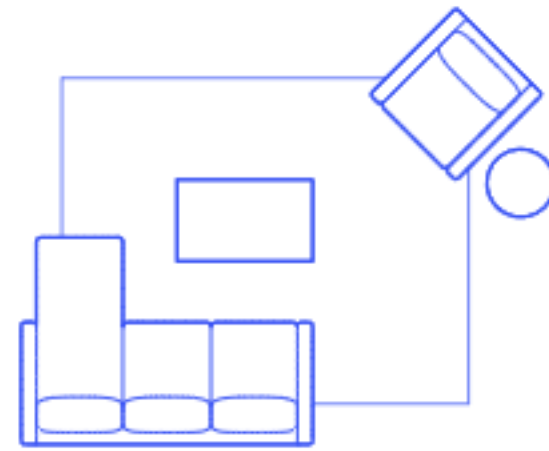
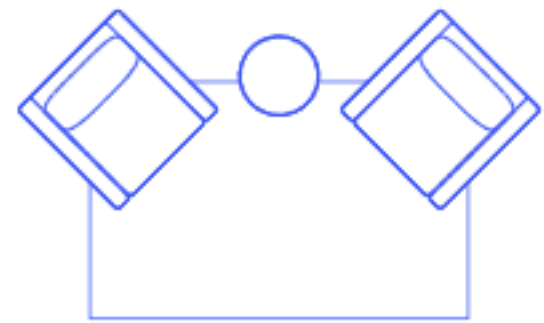
1 Brooklyn Bridge |  
Brooklyn

A modern rooftop terrace with a hot tub, lounge furniture, and a view of the New York City skyline. The terrace features a large white sofa with light blue pillows, a dark wood coffee table, and a hot tub with a wooden deck. The background shows a panoramic view of the city skyline across a body of water, with a cloudy sky. The terrace is enclosed by a glass railing and has a wooden wall on the left side. The text "William Vale | Brooklyn" is overlaid on the image.

William Vale |  
Brooklyn



[www.dimensions.com](http://www.dimensions.com)





# Elements

Bed / Furniture

Flooring

Elements

Lighting

Bathroom

Plants



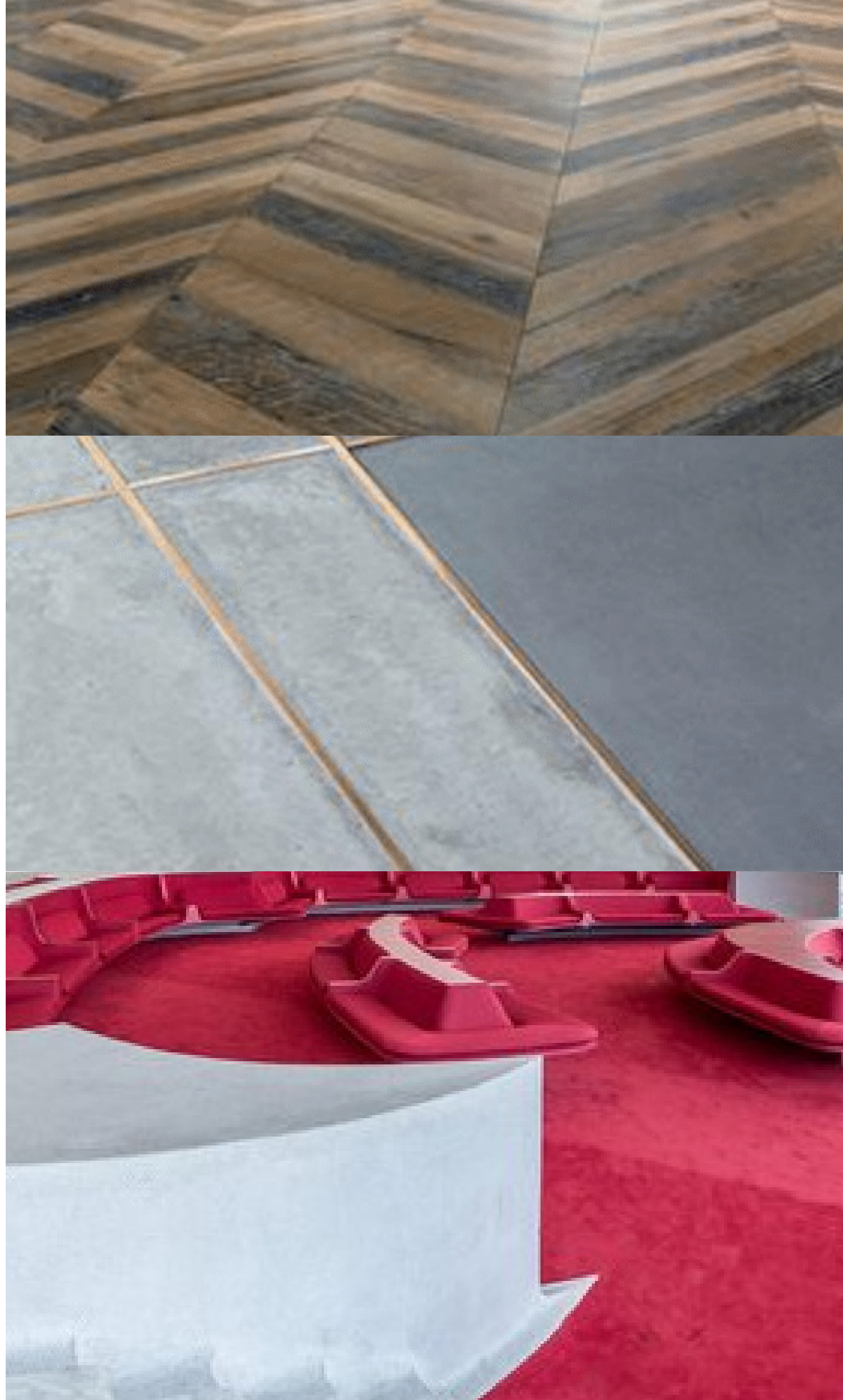
Bed

Location

Type

Fabric

View



## Flooring

Use

Durability

Noise

Feeling

## Lighting

Activity

Mood

Personal Need

Natural Light (req)



Bathroom

Tile

Fixtures

Natural Light

Spa like amenities



# Plants



