

LIGHTING

General/ Ambient Lighting

Task Lighting

Accent Lighting

Decorative Lighting

GENERAL/AMBIENT LIGHTING

General lighting is the main source for lighting a space and it radiates a comfortable level of brightness without glare, and allows you to see and walk about safely.

It can be accomplished with chandeliers, ceiling or wall-mounted fixtures, recessed or track lights and with lanterns mounted on the outside of the home. Having a central source of ambient light in all rooms is fundamental to a good lighting plan



TASK LIGHTING

Task lighting is used for specific tasks.

It can be provided by recessed and track lighting, pendant lighting and under cabinet lighting, as well as by portable floor and desk lamps.

Task lighting should be free of distracting glare and shadows and should be bright enough to prevent eye strain.

Task lighting is most effective when used as a supplement to general lighting



ACCENT LIGHTING

Accent lighting adds drama to a room by creating visual interest.

To be effective, accent lighting requires at least three times as much light on the focal point as the general lighting surrounding it.

Accent lighting is usually provided by recessed and track lighting or wall-mounted picture lights.



DECORATIVE LIGHTING

Decorative lighting contributes to the lighting layers in the space and enhances the look.

Decorative lighting includes pendants, sconces, chandeliers, table and floor lamps, and cylinders



DAYLIGHT

Where daylight is available, electric light levels can often be lowered. In addition to reducing energy use, daylighting is full spectrum lighting that offers excellent color rendering. Controls and window or skylight treatments can be used to prevent glare and unwanted heat from daylight

<https://www.archdaily.com/471249/light-matters-7-ways-daylight-can-make-design-more-sustainable>



FIXTURE SHAPES AND FORMS

CHANDELIERS

Chandeliers add style and a decorative focal point to almost any room in the house. Though they have traditionally been used in the dining room, they are now commonly featured in bedrooms, kitchens, family rooms, living rooms, foyers and even bathrooms.



CEILING MOUNTED FIXTURES

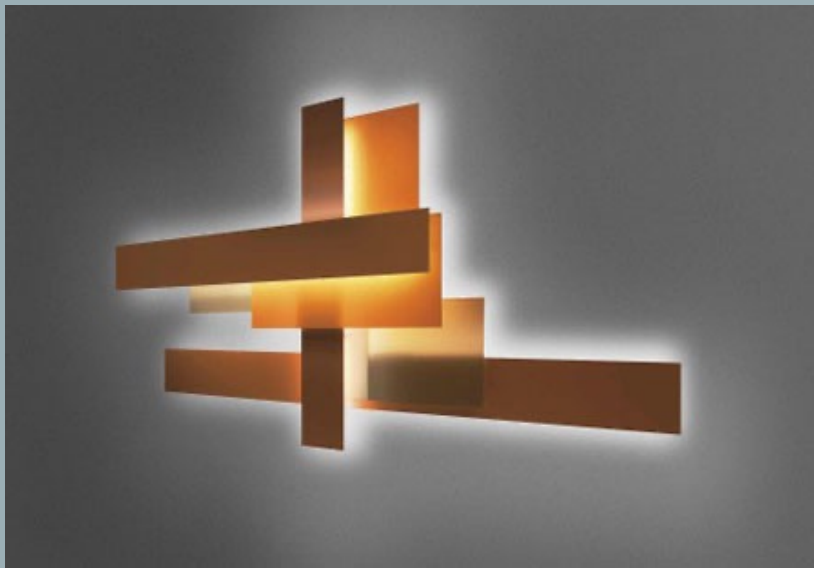
are excellent as a source of ambient lighting and are especially practical in areas with much activity, such as foyers, hallways, bedrooms, kitchens, baths, laundry rooms, playrooms and dens



WALL MOUNTED FIXTURES

can provide a unique sense of elegance and sophistication to any home

They are excellent sources of light in foyers, hallways, bedrooms, living rooms, home offices and home theaters. Wall brackets also are often used for task lighting at the sides of bathroom mirrors.



BATH FIXTURES

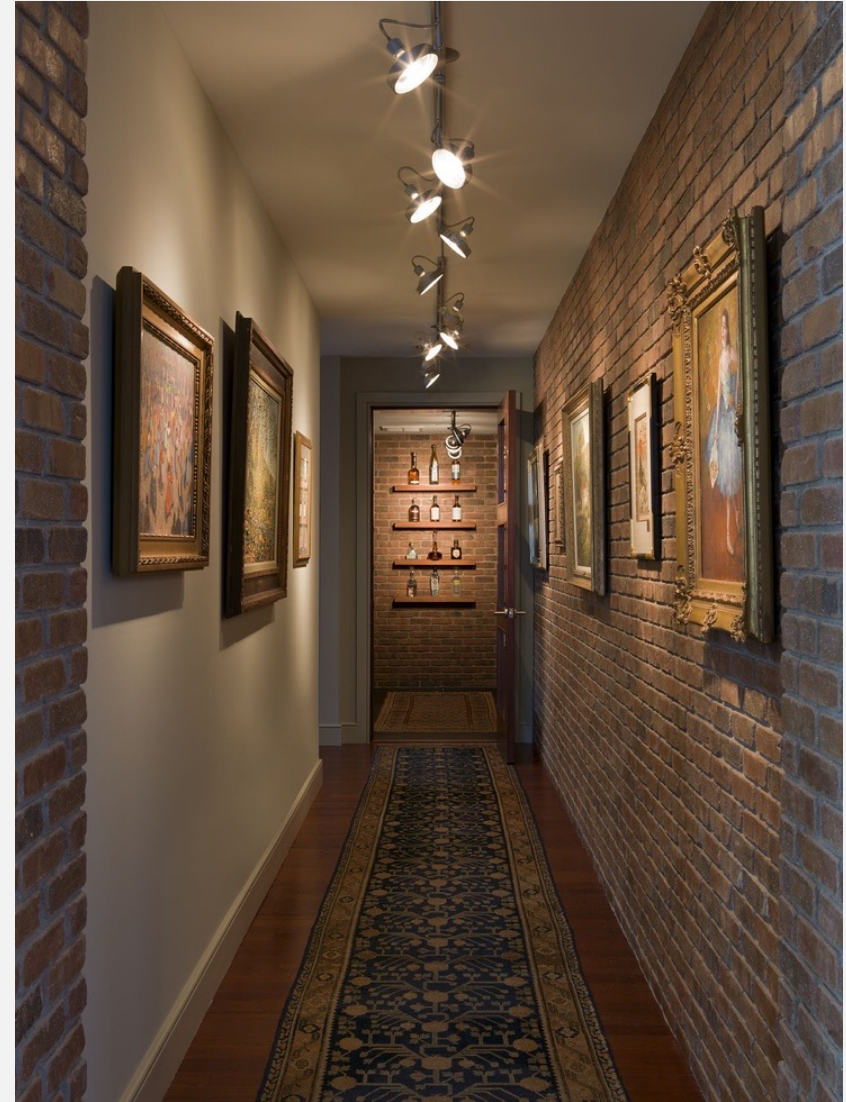
supply task lighting, while supplementing the general lighting provided by ceiling fixtures. They are available in a wide range of styles, colors and shapes and are being used much more frequently today than the older bath/vanity lighting strips.



TRACK LIGHTING

has undergone many changes in recent years. The trend in track lighting has been toward smaller fixtures, which are much less noticeable in the space. Track lighting is excellent for its flexibility and can provide ambient, task or accent lighting.

You can move, swivel, rotate and aim the individual fixtures in any direction along the track, giving you the versatility to change the lighting scheme when the need arises. With special attachments, you also can hang chandeliers and pendants from the track.



RECESSED LIGHTING

can provide general, task and ambient lighting in a very subtle manner.

Installed in the ceiling with only the trim showing, recessed fixtures can be used anywhere in the home, including outdoors, under eaves and on porches. They are ideal for any type of ceiling, including tall ceilings, shorter ceilings and sloped ceilings.

They are available as downlights for ambient and track lighting, and as adjustable accent lights or wall washers for accent lighting.

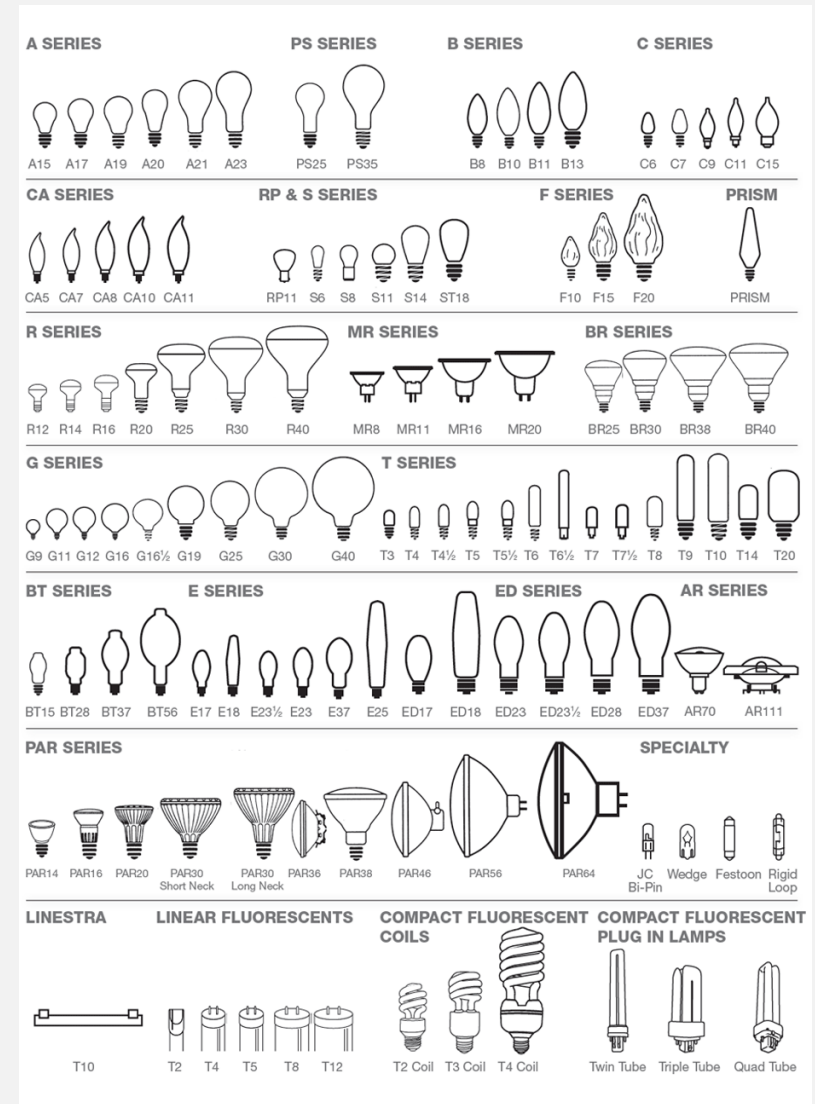


UNDER CABINET FIXTURES

offer both task and accent lighting. Mounted under kitchen wall cabinets, they provide excellent task lighting at the countertop. Used in display cabinets, they provide accent lighting for three-dimensional art and sculpture. In workshops or laundry rooms, they are an ideal source of task and ambient lighting



TYPES OF BULBS



LED Light emitting diodes

LED lighting in general is more efficient and longer lasting than any other type of light source, and it is being developed for more and more applications within the home. LEDs are currently popular in under-cabinet strips and some types of downlights.



INCANDESCENT

produce light when an electric current passes through a filament and causes it to glow. Because they are less energy efficient than other light sources, they are best used for task lighting that demands high levels of brightness.



ALL-PURPOSE, DECORATIVE AND SPECIALTY LIGHTING

Incandescent Light Bulbs

Westinghouse offers a wide range of incandescent light bulbs to meet decorative, general purpose, low voltage, specialty and rough service applications.



HALOGEN

incandescent bulbs produce a brighter and whiter light than other incandescent bulbs. They also have a longer life and provide more light per watt than standard incandescent bulbs, making them a more efficient choice



ECO-HALOGEN AND SPECIALTY LIGHTING

Halogen Light Bulbs

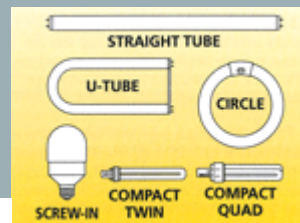
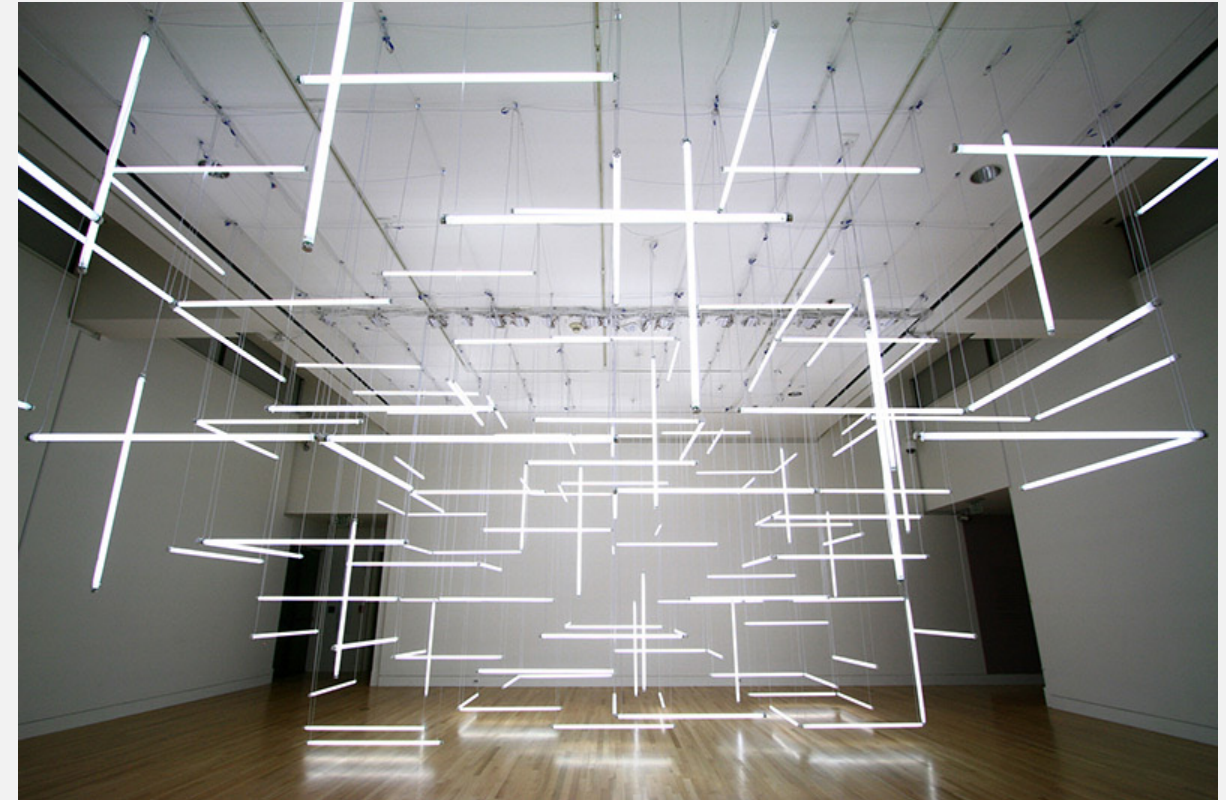
Providing bright, white light and long life, our halogen assortment features light bulbs that come in a variety of sizes and shapes. They are completely dimmable making them a great choice for multiple lighting solutions.



FLUORESCENT

produce light when an electric arc passes between cathodes to excite mercury and other gases producing radiant energy, which is then converted to visible light by a phosphor coating.

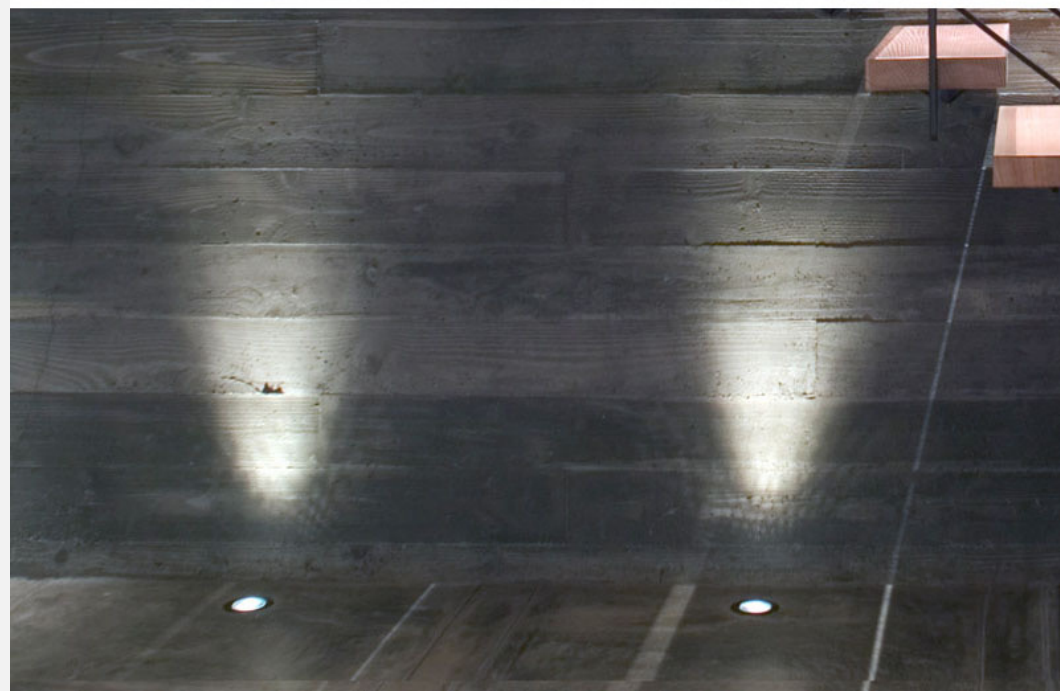
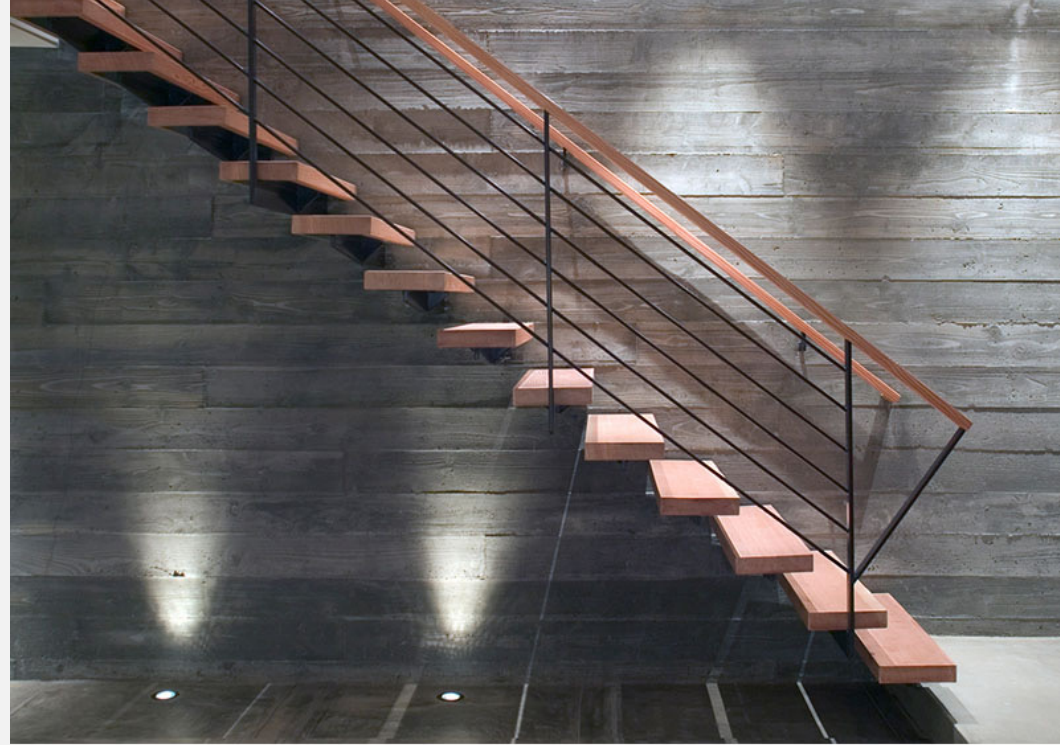
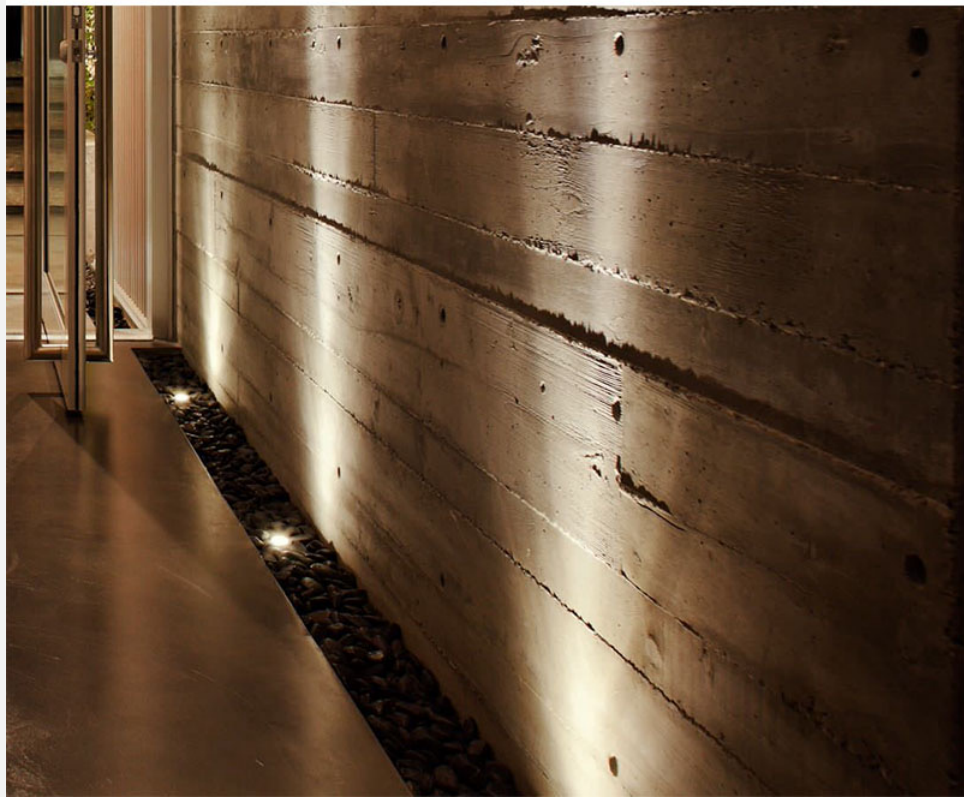
They use 1/5 to 1/3 as much electricity as incandescent with comparable lumen ratings and last up to 20 times longer.



UNIQUE LIGHTS









<https://www.americanlightingassoc.com>

<http://www.contemporist.com/kitchen-island-lighting-idea-use-one-long-light-instead-of-multiple-pendant-lights/>

<http://www.contemporist.com/7-interiors-that-use-dramatic-uplighting-to-brighten-a-space/>

<http://www.contemporist.com/8-different-style-ideas-for-lighting-above-your-dining-table/>

<https://www.archdaily.com/471249/light-matters-7-ways-daylight-can-make-design-more-sustainable>

<https://www.archdaily.com/catalog/us/companies/1556/alcon-lighting>

Ceiling + Lighting Inspiration

Your concept should follow in the ceiling plane and in your lighting selections





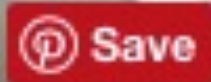














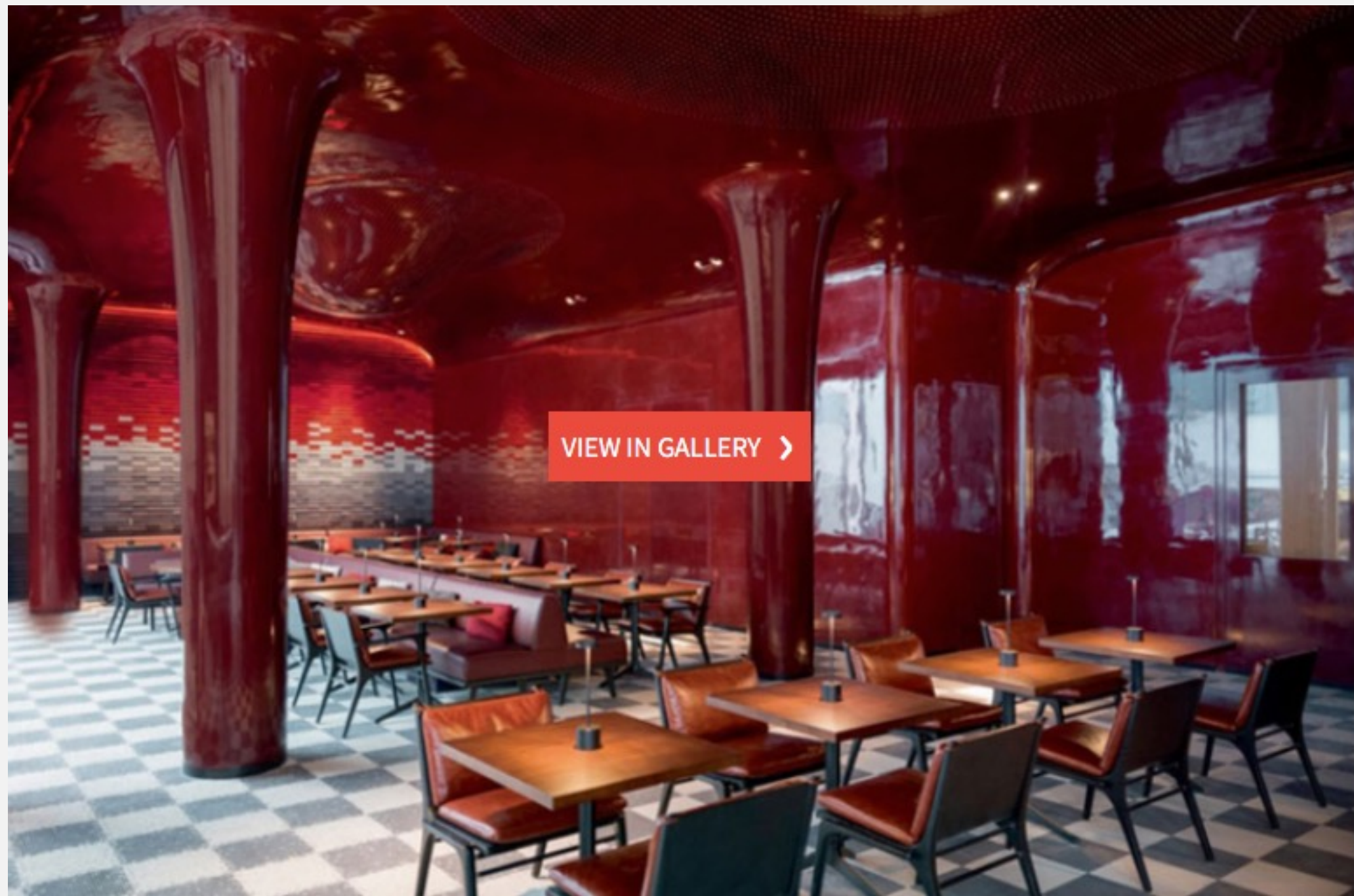












VIEW IN GALLERY >



