

**Department of Architectural Technology**  
 Bachelor of Technology in Architectural Technology

**ARCH 3512 ARCHITECTURAL DESIGN V**

PROGRAM: You must also provide spaces that are required for the project. It can be open or enclosed spaces. Define what happens in each space and what type of furnishing each space will need. This should be done through images and text. There must be an outdoor space incorporated into your design- garden on the ground floor terraces on upper floors. The exterior of the building must also be developed.

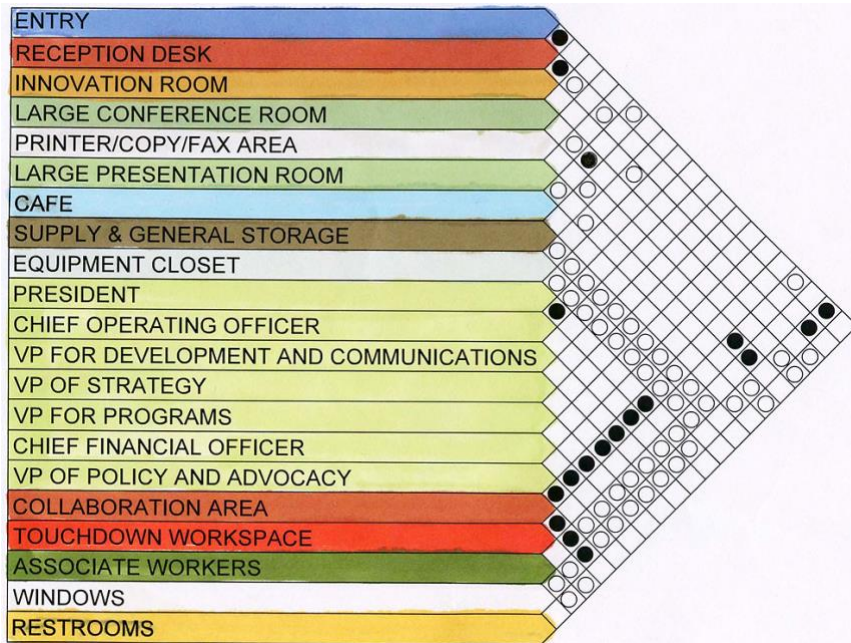
**Part 1**

1. Create a list of all the spaces that your client would like in their new space. Interior/Exterior
2. Describe the activity in each space.
3. List the furniture and approximate size that would be required in each room
4. Does it require natural light?
5. Does it have special lighting requirements?
6. Does it need plumbing?
7. Who will use this space?

This information could be in a list or in a grid form (excel like chart). Refer to Programming Lecture

**Part 2**

Create a Adjacency Matrix  
 Use three colors/shapes/or fill patterns to denote which spaces Must, Should, "Would be nice" next to one another.



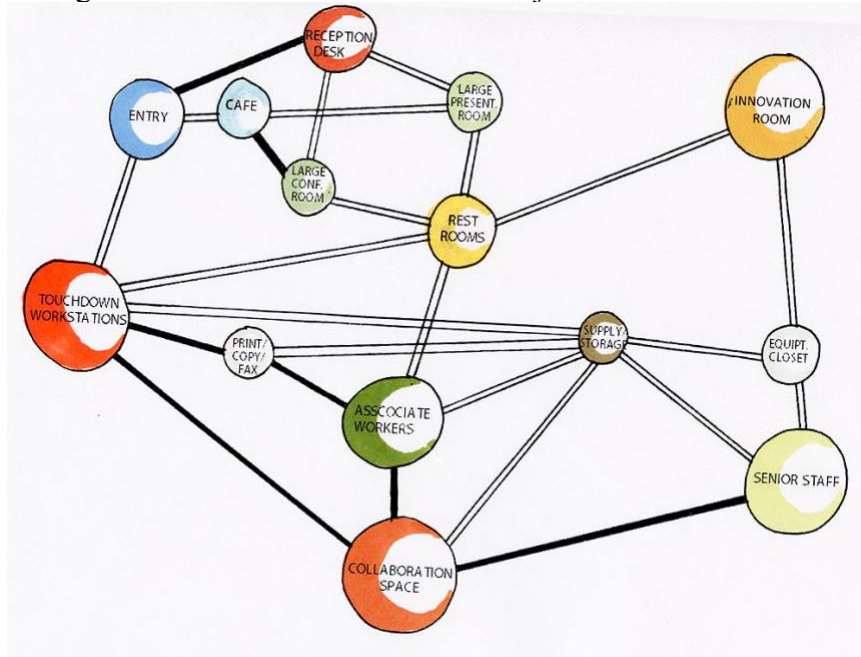
### Part 3

Create a Bubble Diagram of the Spaces.

A triple line = Must be adjacent

A double line = Should be adjacent

A single line = "Would be Nice" to be adjacent to



**HOMEWORK: Create a Program Matrix, including adjacencies + spatial needs and Bubble Diagram**