

Scale of Human Figure $\frac{1}{8}" = 1'-0"$

These dimensions are based on the average or normal adult. As clearances are minimum they should be increased when conditions will allow.
 Table, desk, and other sitting work-top heights are shown 2'-5"; however some authorities prefer 2'-6" or 2'-6 1/2". See sheets titled "Children's Furniture," for their size and furniture.
 Reproduced by special permission of the Architectural Record, Copyright Owner
 Drawings by Ernest Irving Freese

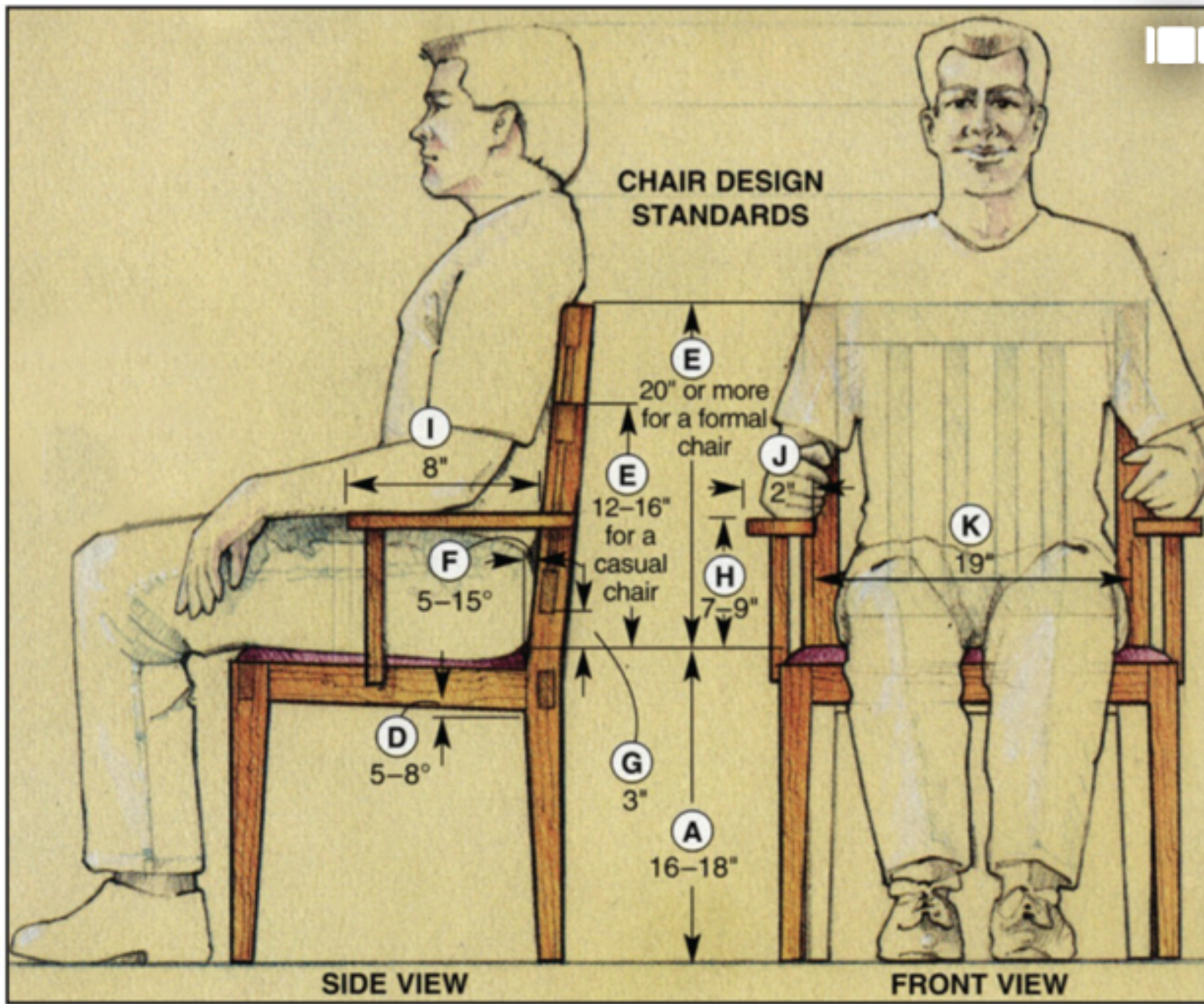
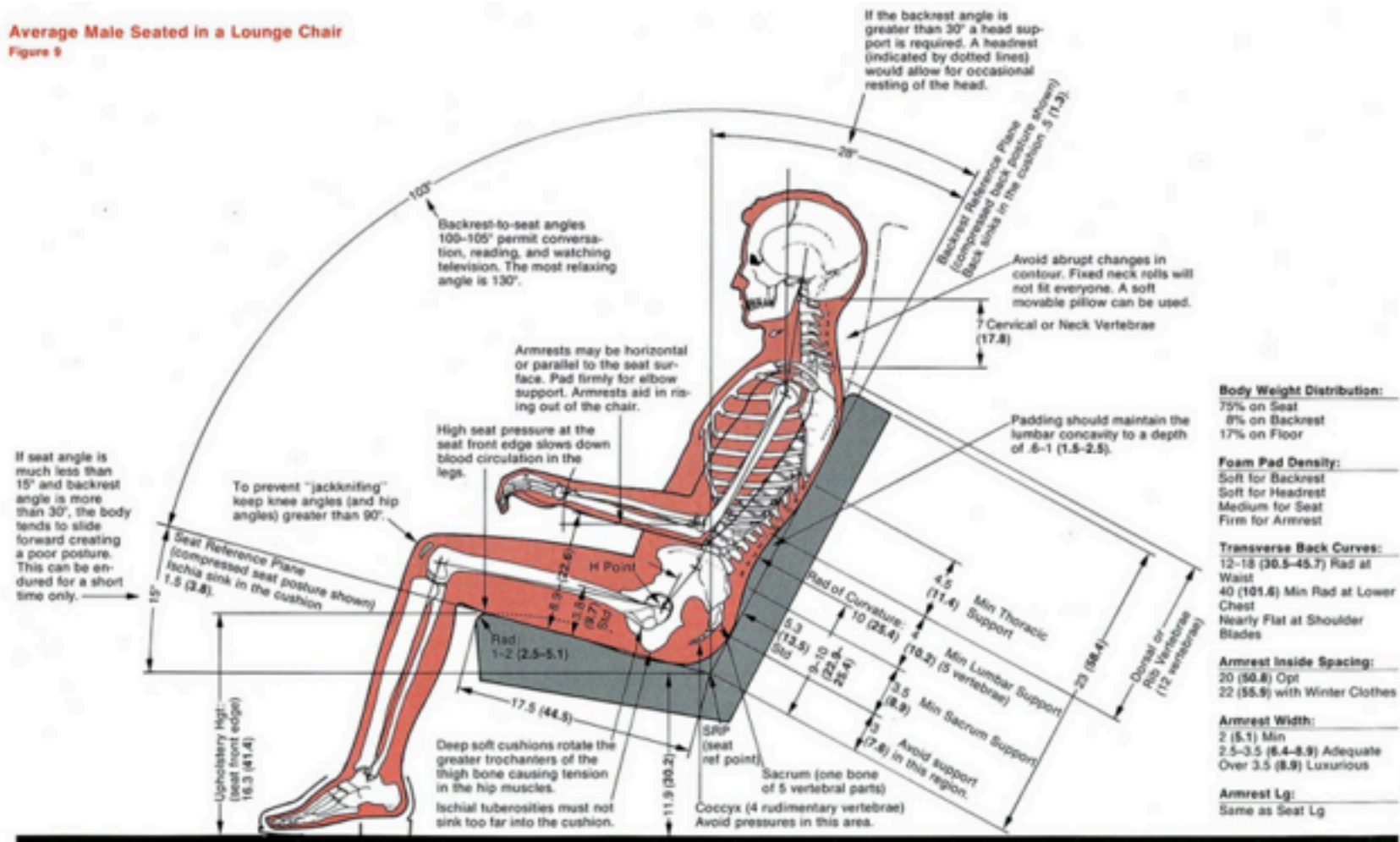


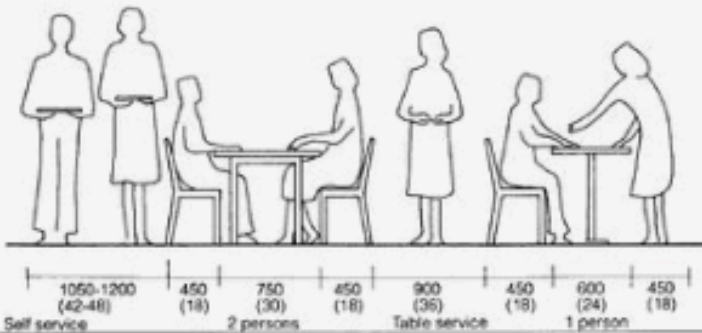
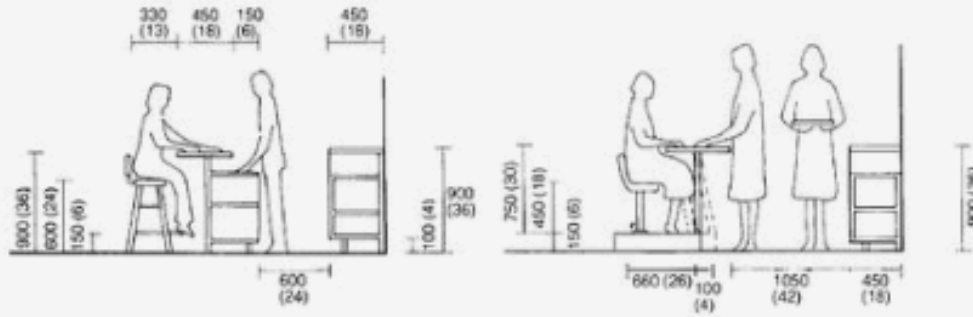
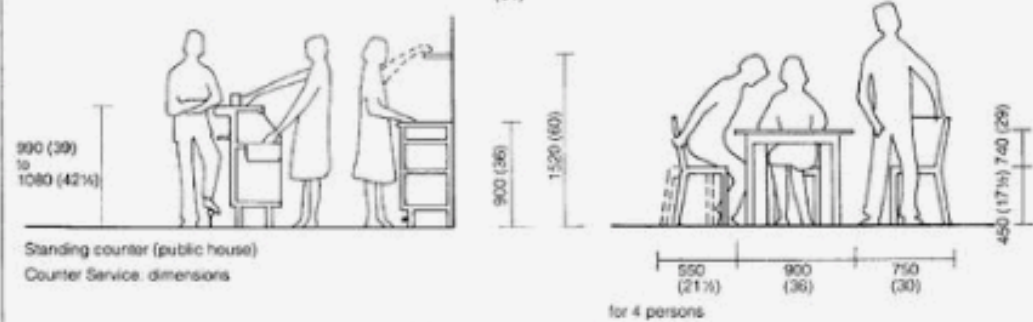
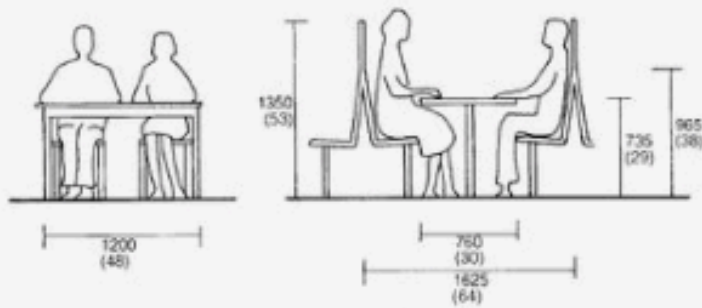
Image by [Wood Magazine](#)

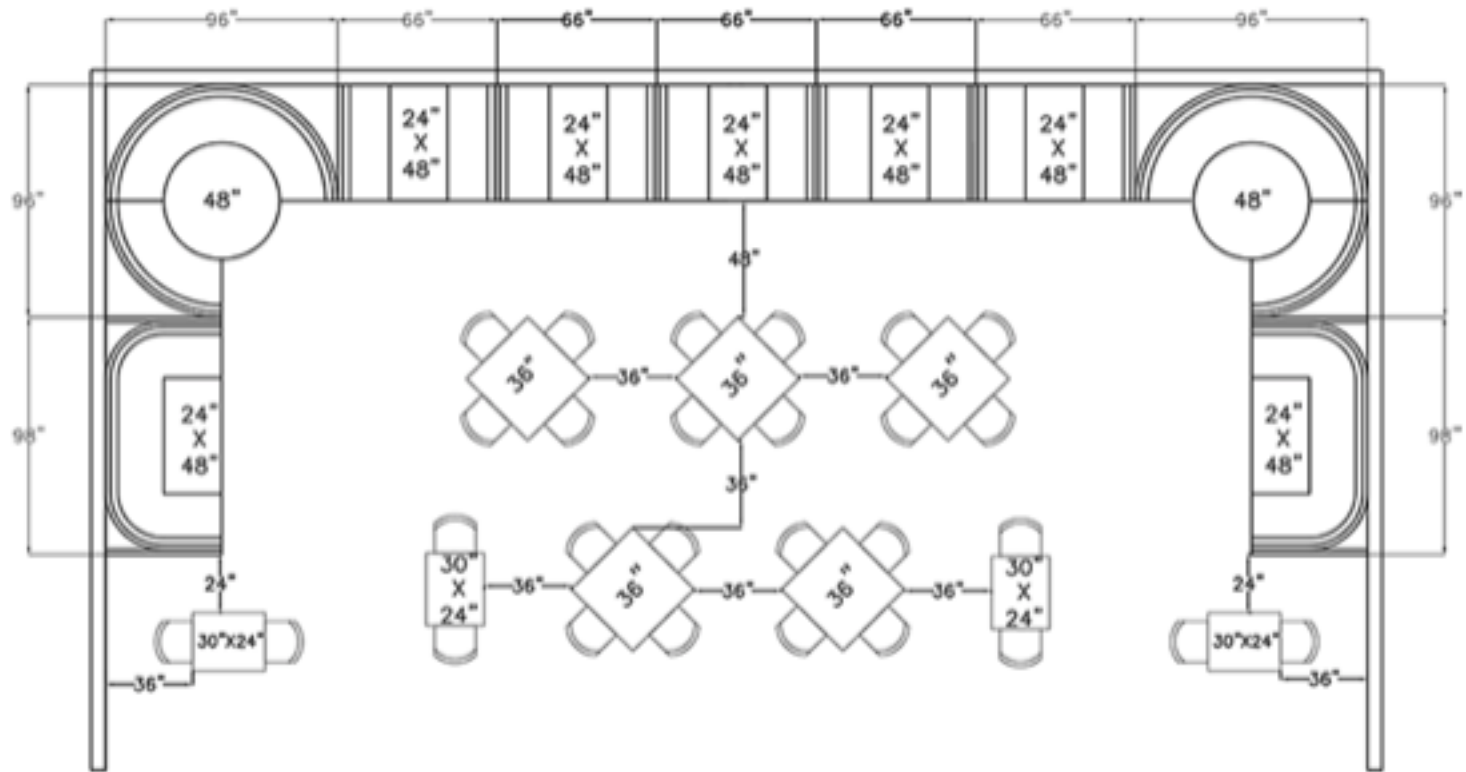
Average Male Seated in a Lounge Chair
Figure 9

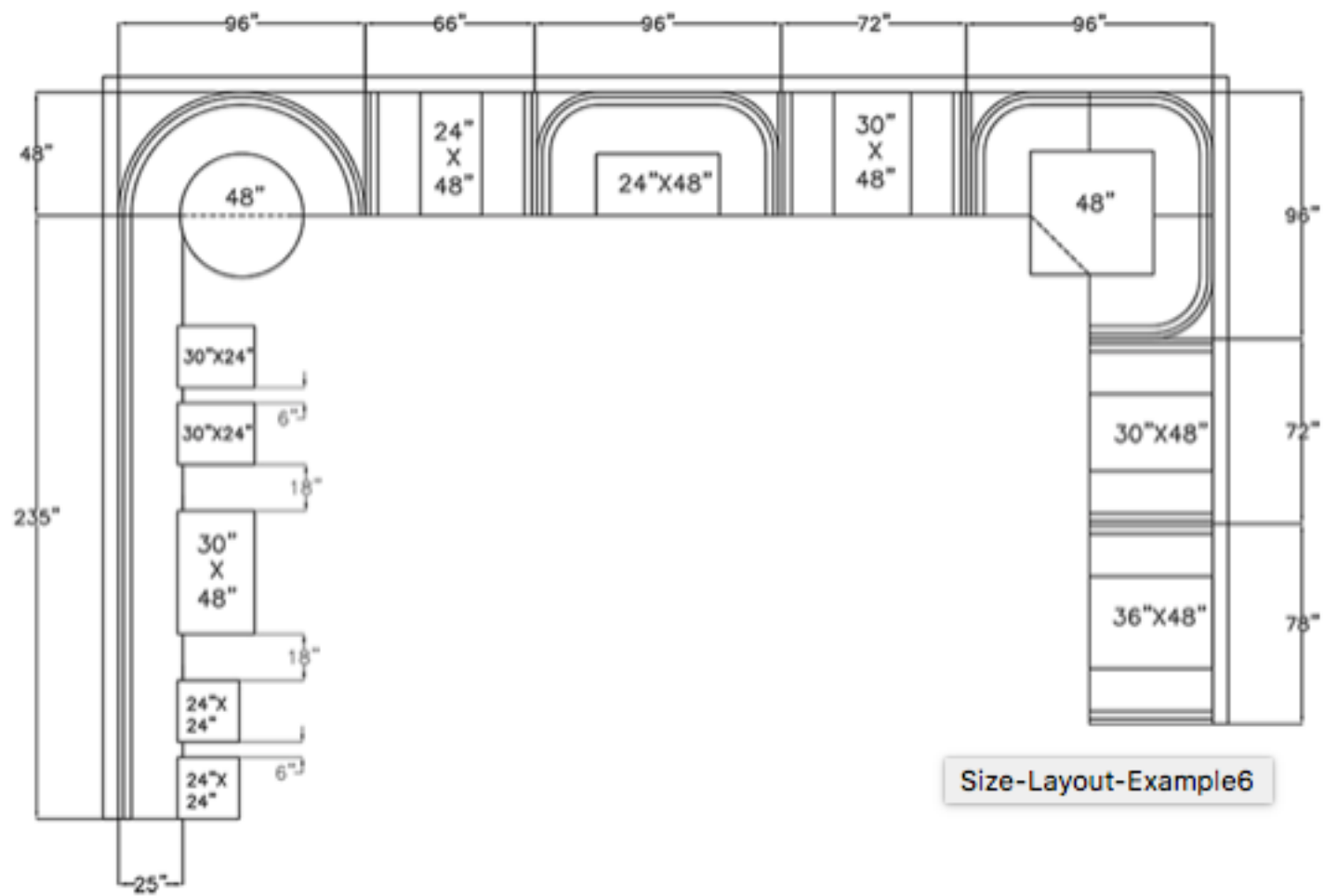




Typical counter service dimensions mm (in.)







Size-Layout-Example6

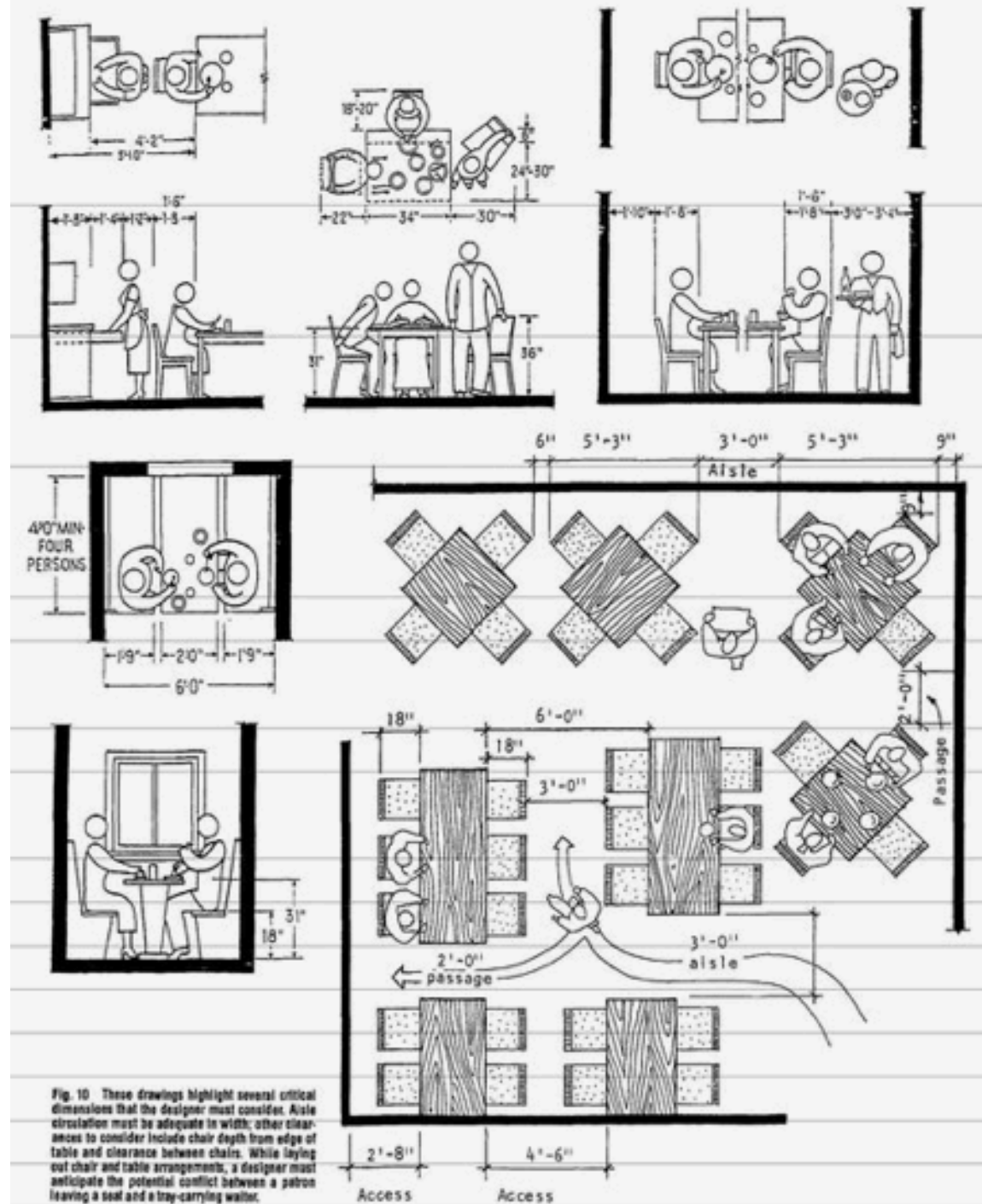
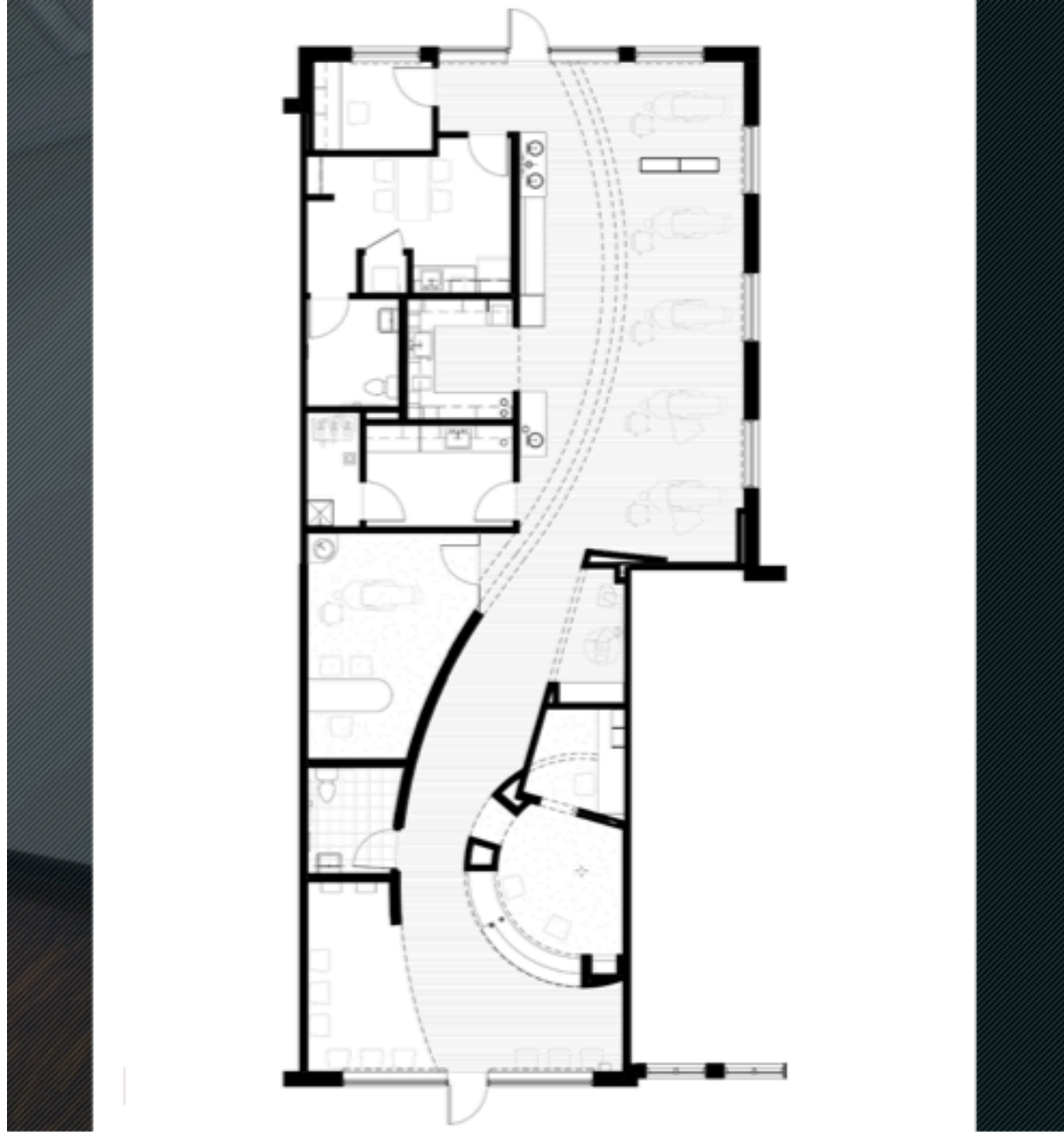
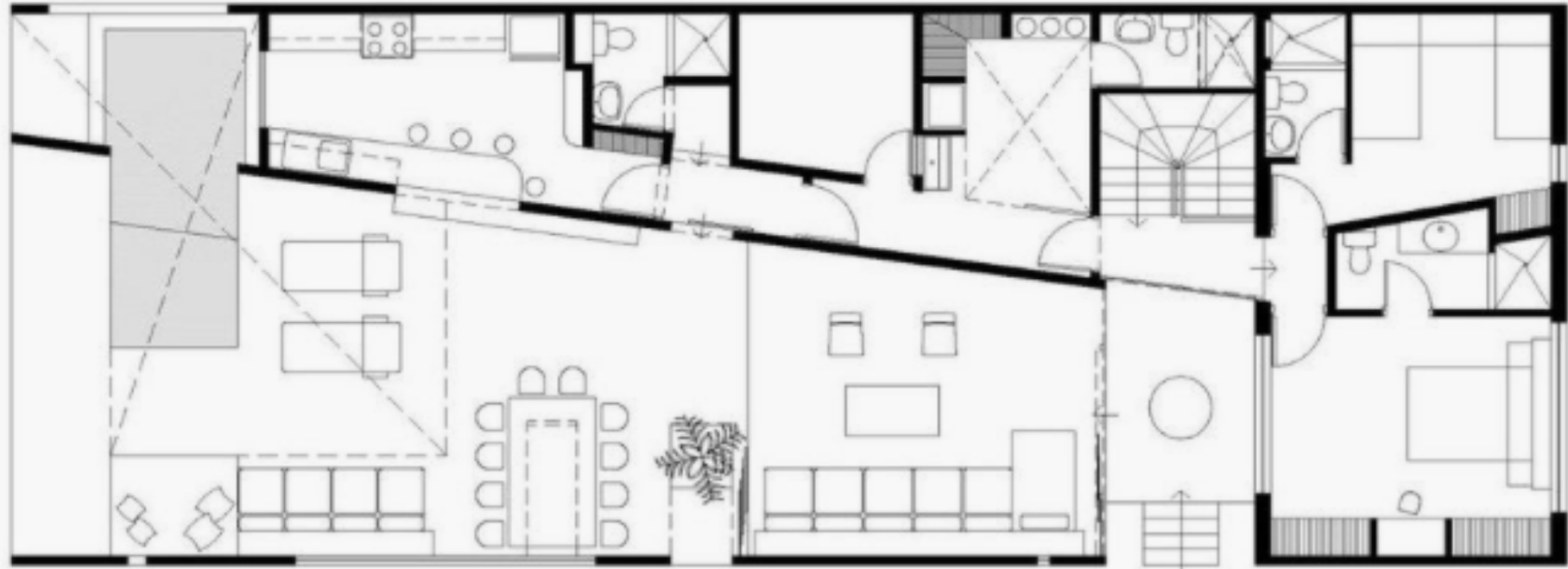
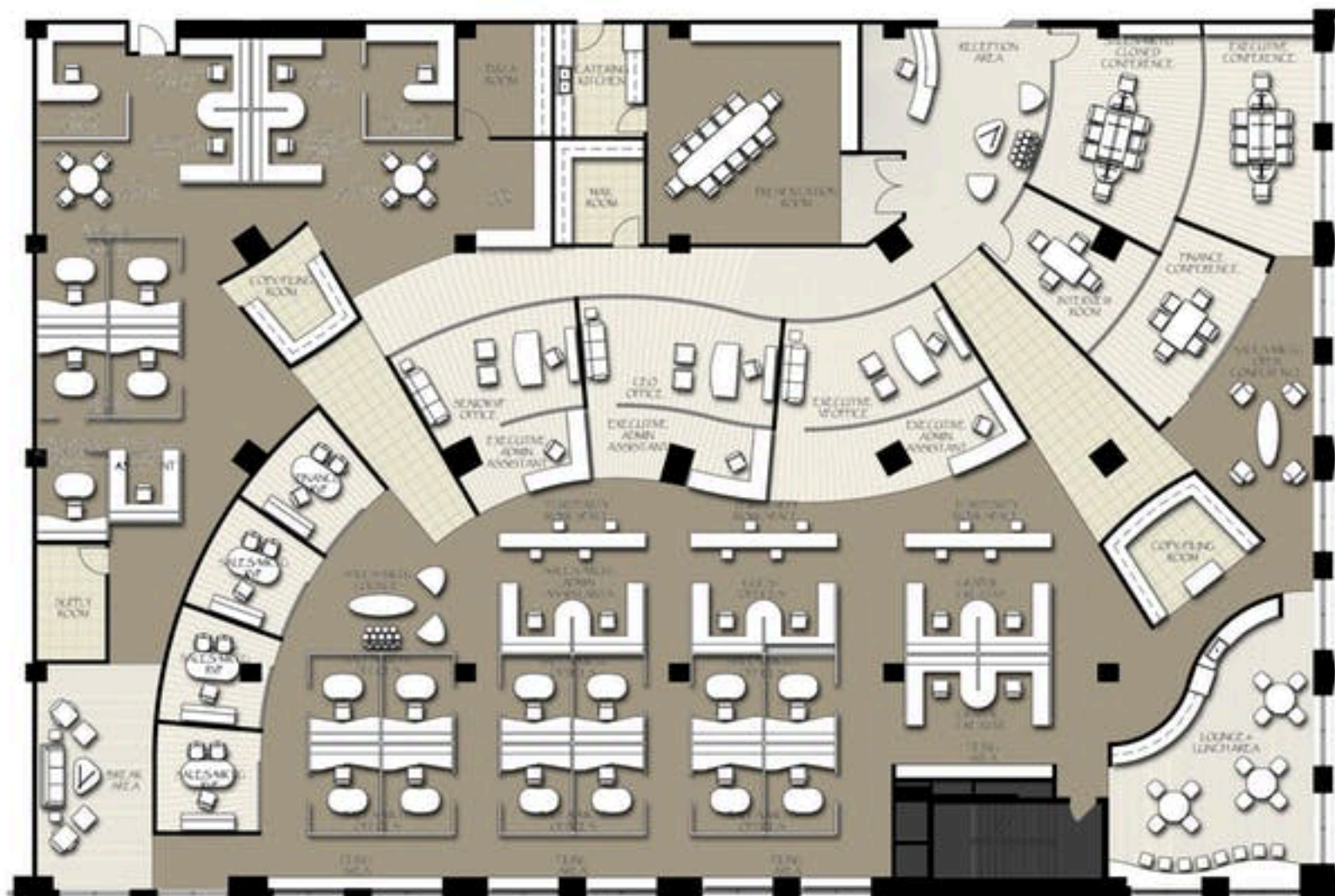


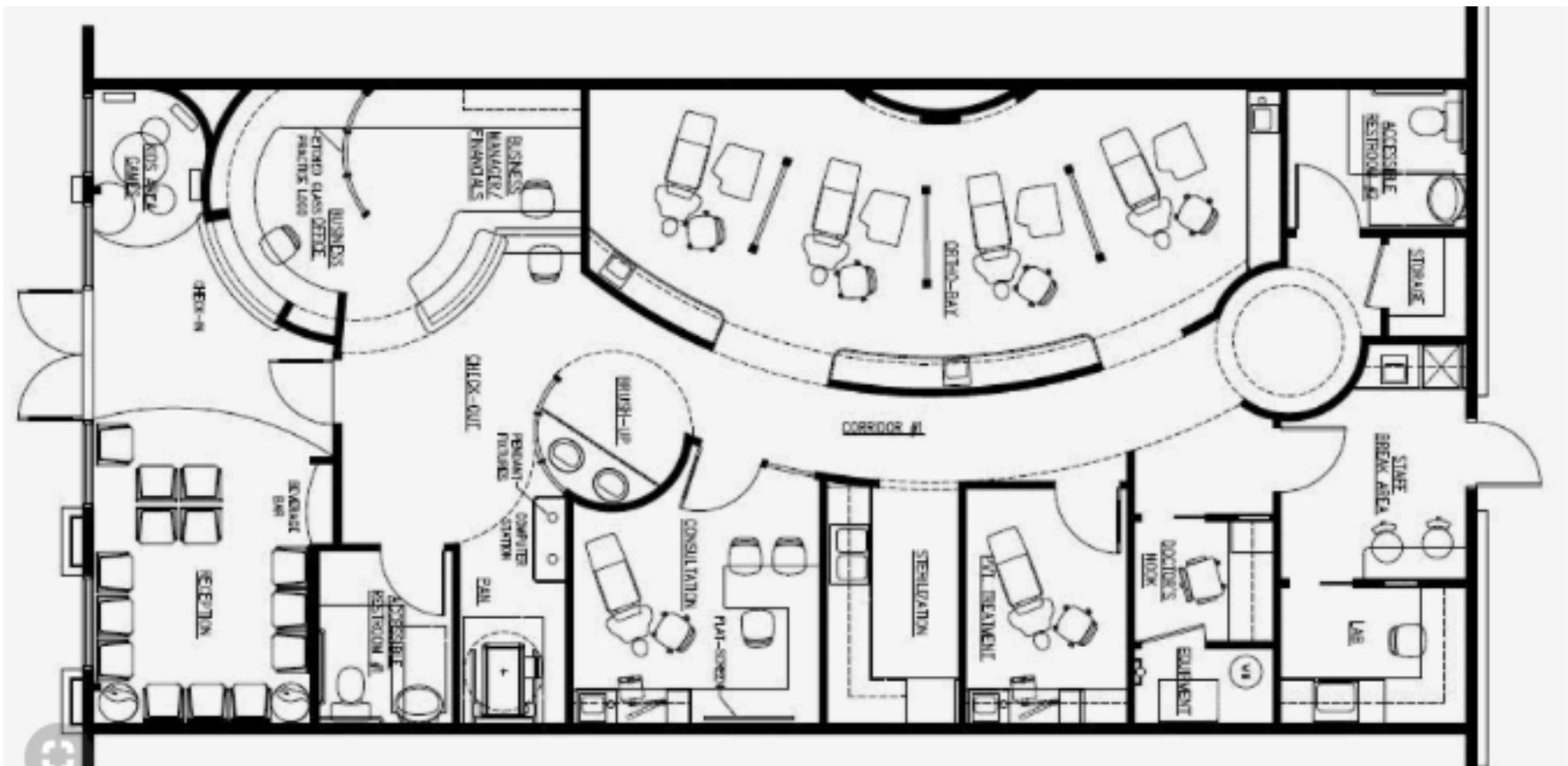
Fig. 10 These drawings highlight several critical dimensions that the designer must consider. Aisle circulation must be adequate in width; other clearances to consider include chair depth from edge of table and clearance between chairs. While laying out chair and table arrangements, a designer must anticipate the potential conflict between a patron leaving a seat and a tray-carrying waiter.

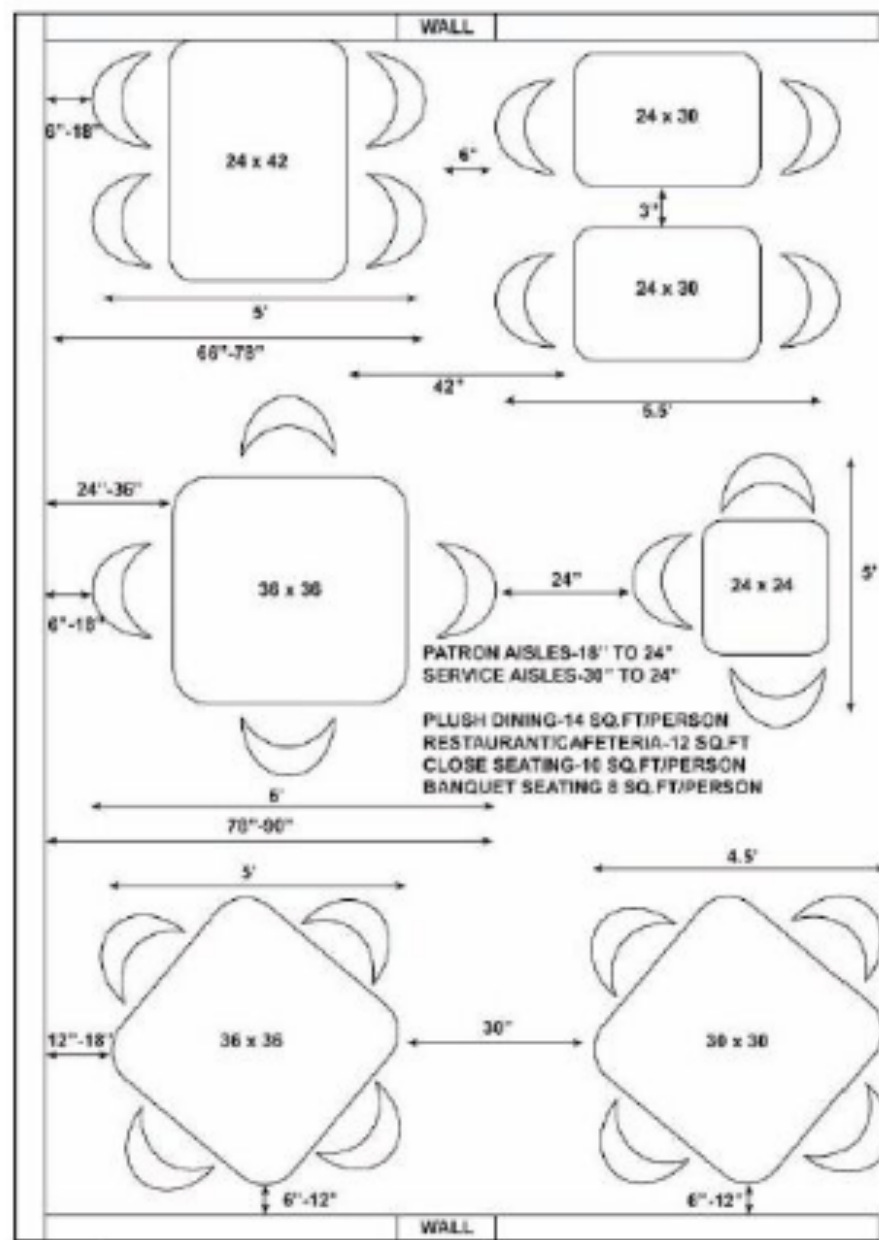


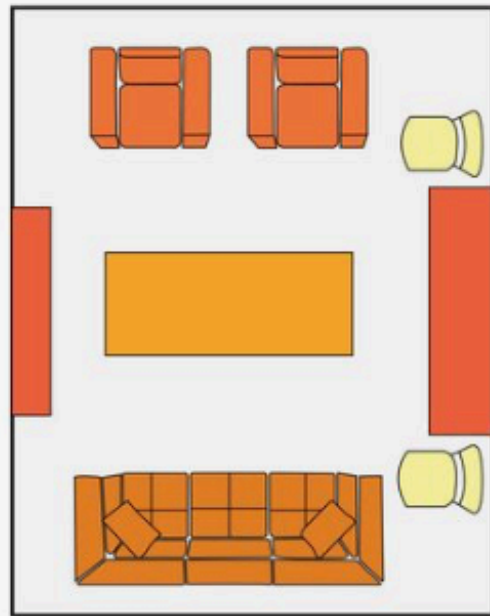
PRAIRIE HAWK ORTHODONTICS



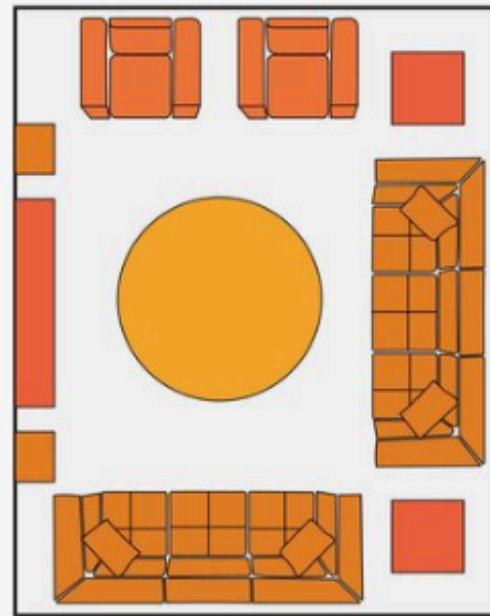




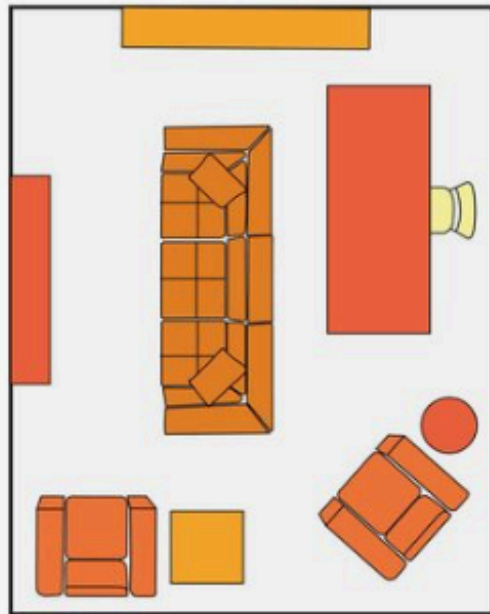




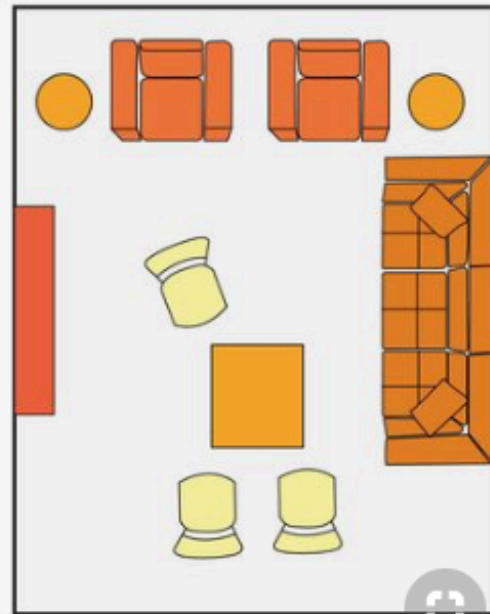
CONVERSATIONAL



FAMILY GATHERING

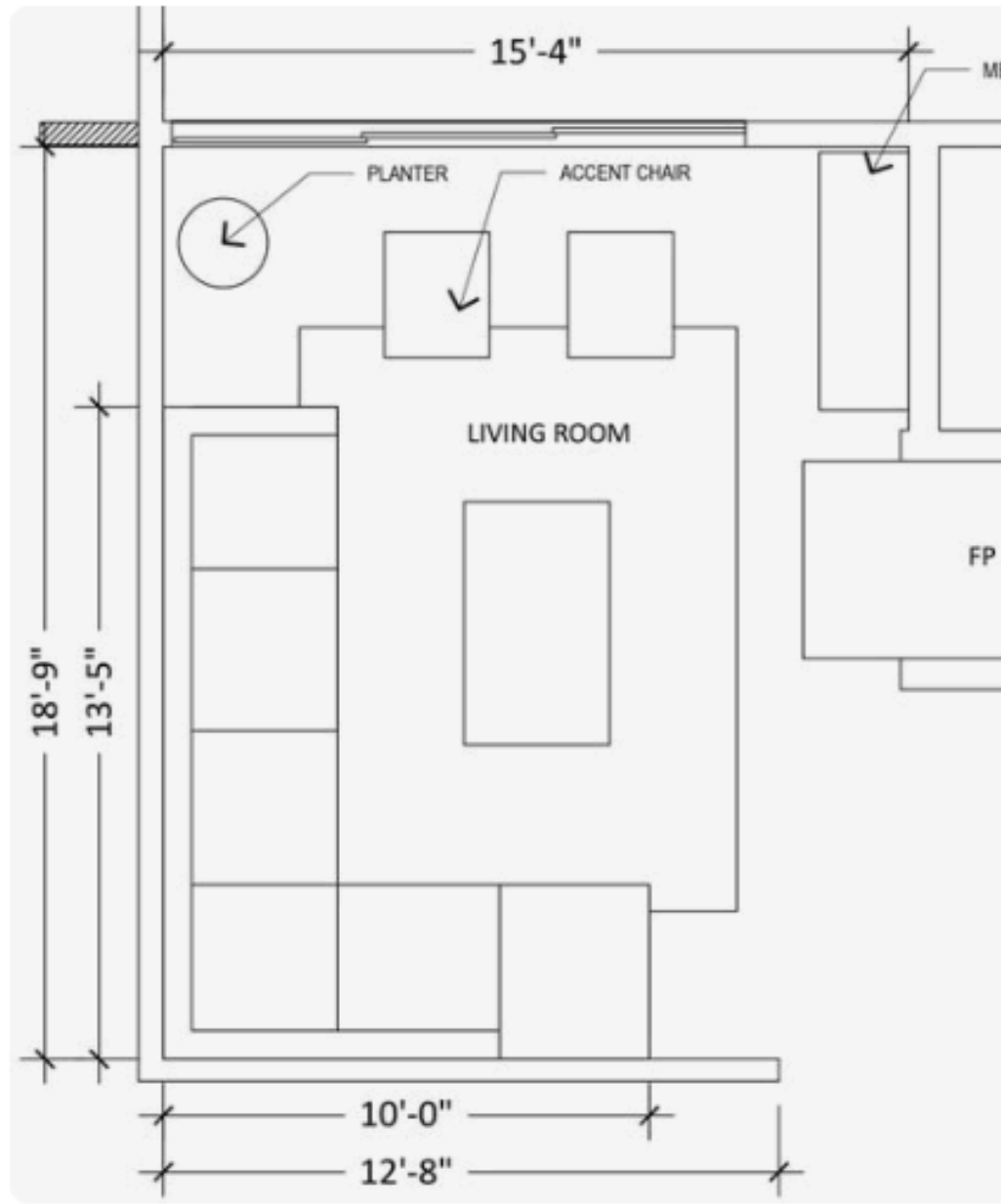


MULTIFUNCTIONAL

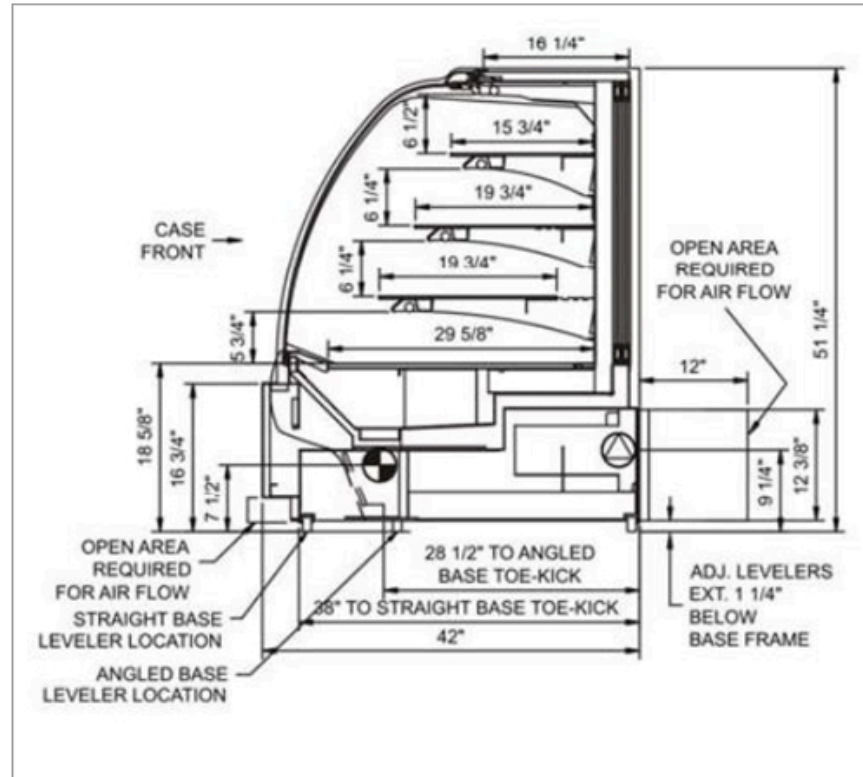


ACTIVITY

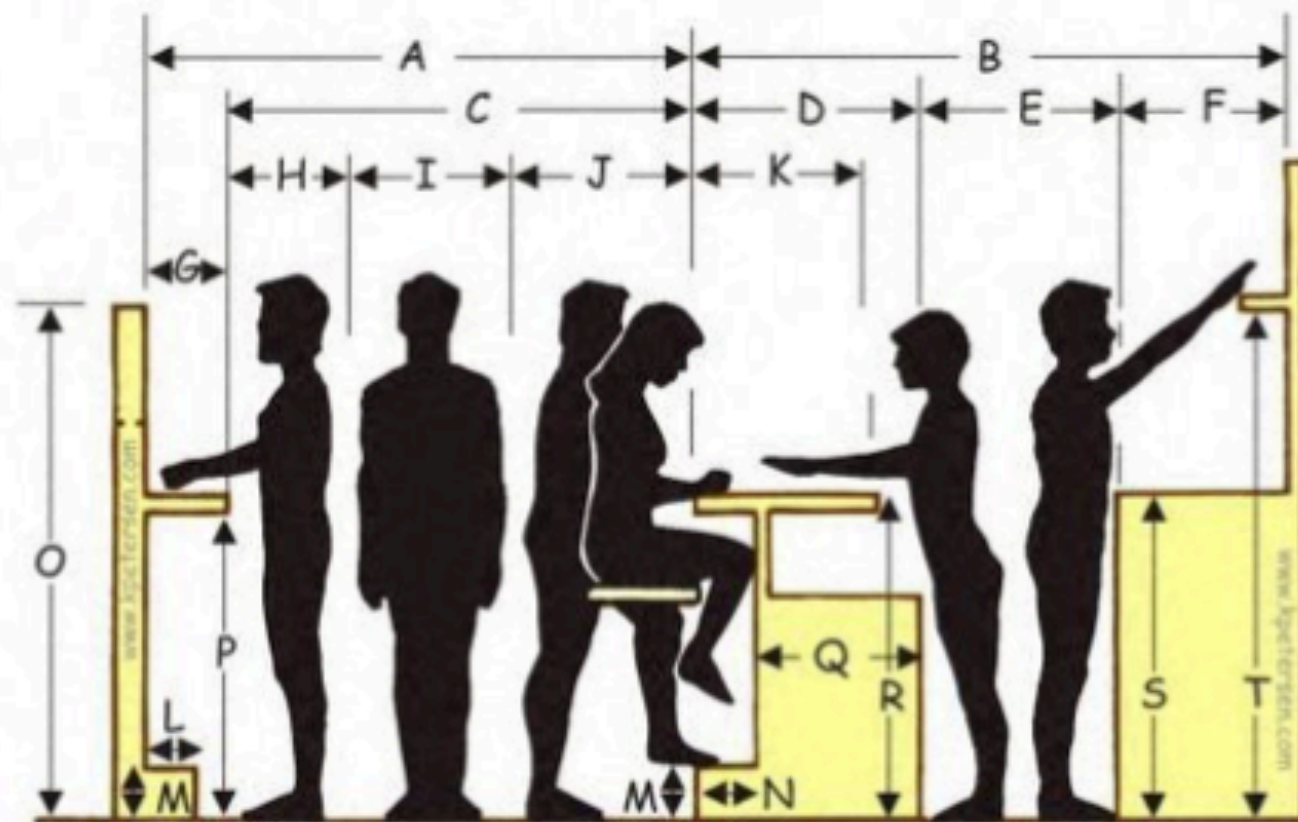




Structural Concepts Refrigerated Bakery Display
Case 76 Inch - HV74R



Customary, Suggested Bar Layout Dimensions



A. Outside Bar Edge To Wall.....	76" - 84"
B. Outside Bar Edge To Back Wall.....	82" - 104"
C. Outside Bar Edge To Drink Shelf.....	66" - 72"
D. Outside Bar Edge To Inside Equipment Edge ..	23" - 28"
E. Behind Bar Traffic Area.....	30" - 36"
F. Back Bar Depth.....	24" - 30"
G. Drink Shelf Depth.....	10" - 12"
H. Drink Shelf Customer Area (Minimum).....	18"
I. Customer Traffic Area (Minimum).....	30"
J. Bar Seating Area.....	18" - 24"
K. Bar Depth.....	18" - 24"
L. Drink Shelf Step or Foot Rail Depth.....	6" - 9"
M. Step or Foot Rail Height.....	7" - 9"
N. Bar Step or Foot Rail Depth.....	7" - 9"
O. Room Divider Screen Height.....	76"
P. Drink Shelf Height (To Top Of Surface).....	42" - 45"
Q. Depth Of Behind Bar Equipment.....	22" - 26"
R. Bar Height.....	42"
S. Back Bar Height.....	36" - 42"
T. Back Bar Back Wall Shelf Height.....	60" - 69"

Petersen Furniture, Inc. 2012

