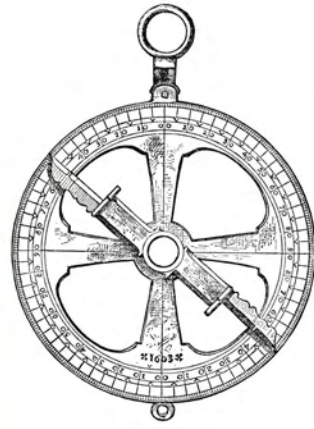




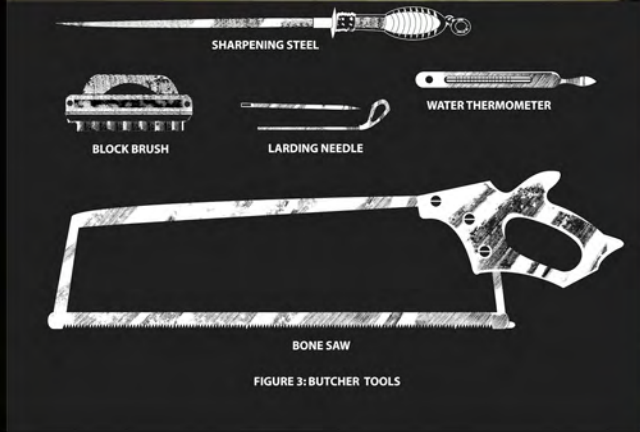
MAYA STAR, AGE 35



ITZEL, AGE 4



BUTCH JR., AGE 7

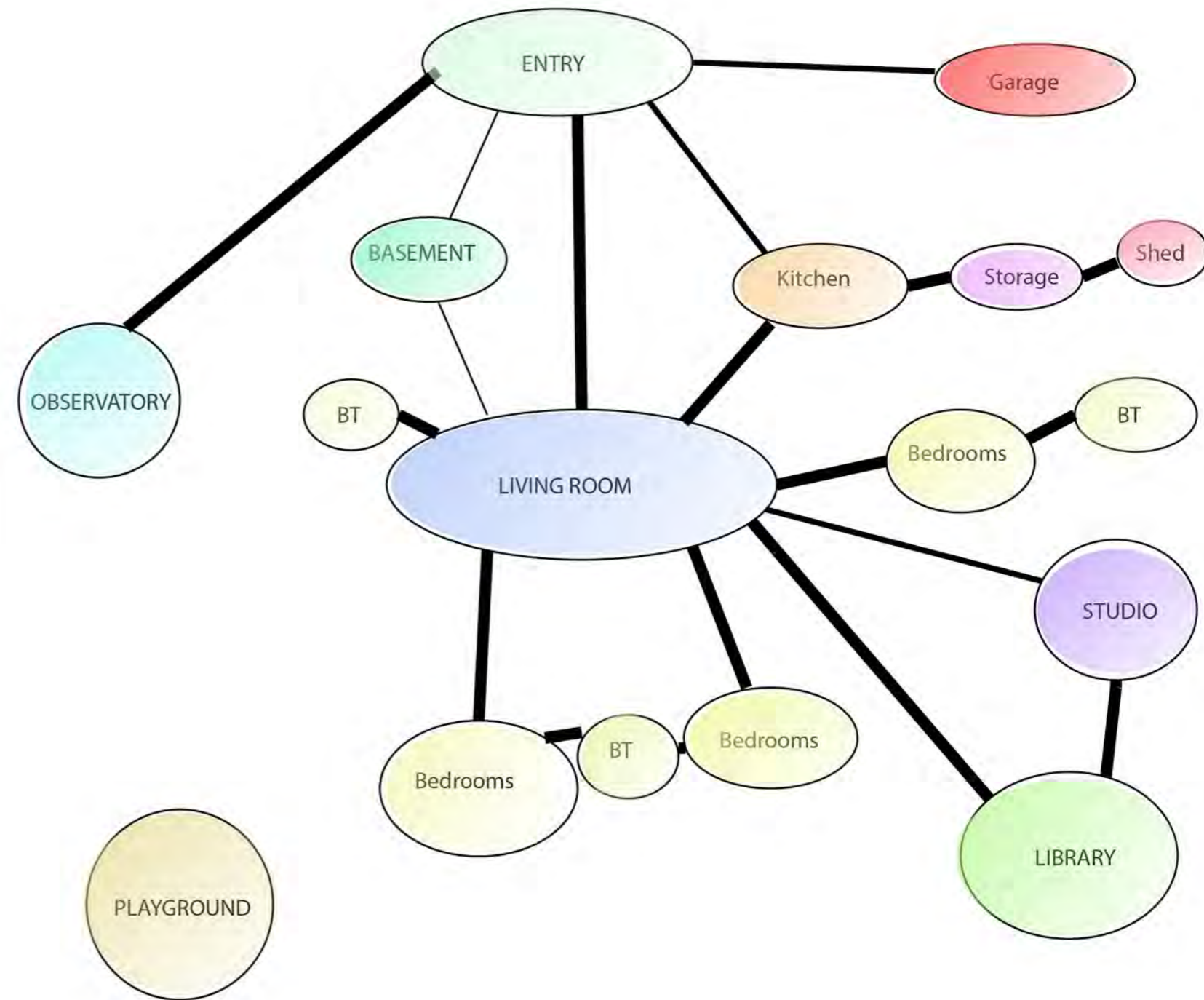
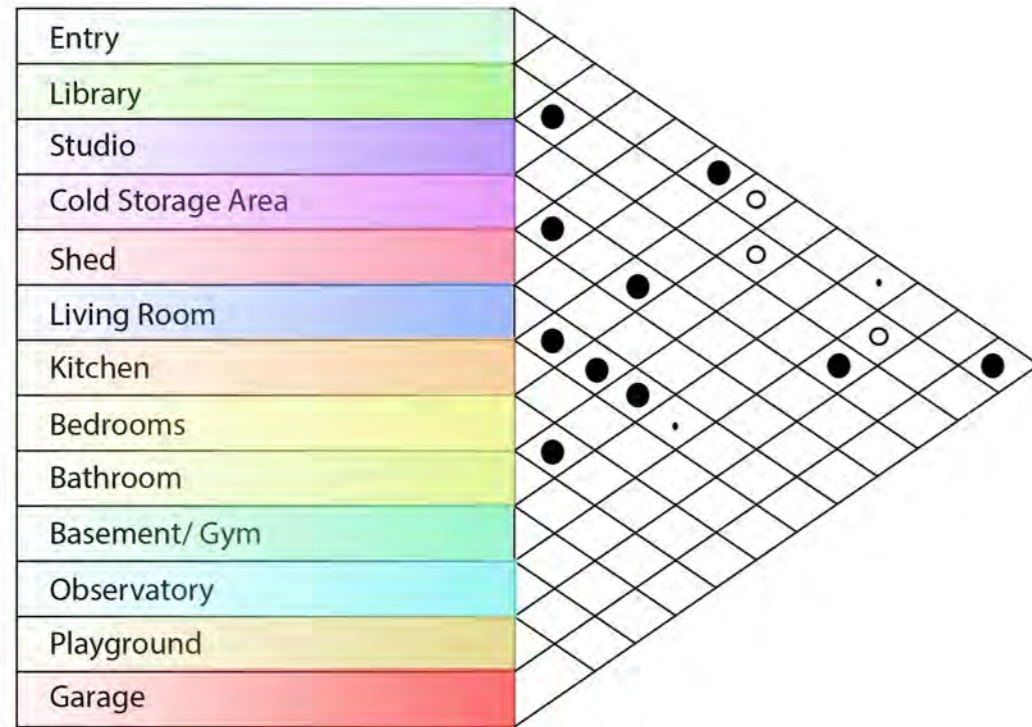


GAUSS, AGE 2



BUTCH, AGE 39

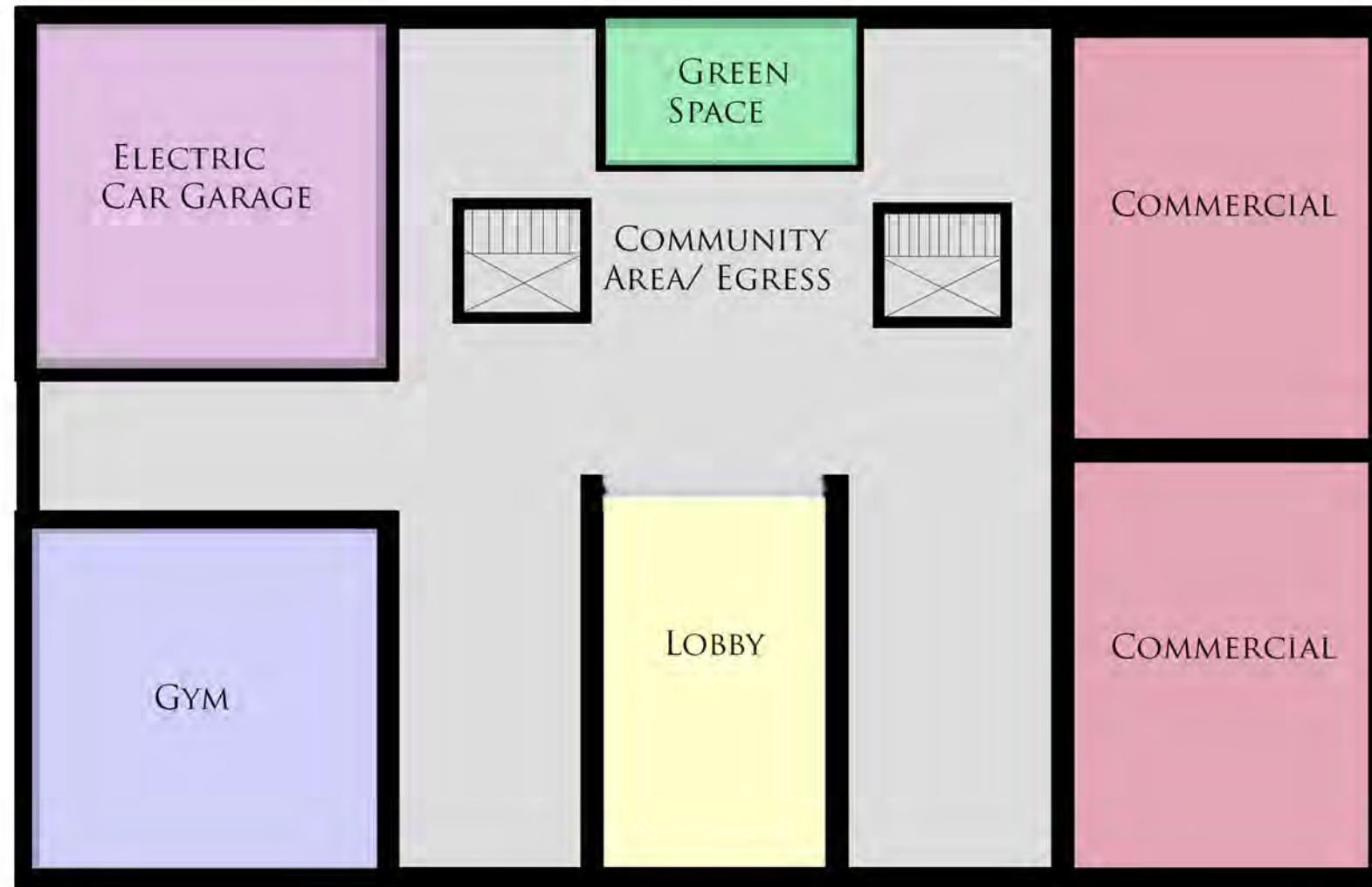




MATRIX AND BUBBLE DIAGRAM

LUIS WEBER
 DESIGN V
 PROFESSOR BOURATOGLU

FURMAN STREET



JORALEMON STREET

PRECEDENT STUDY

AFFORDABLE HOUSING PROGRAMS

LUIS WEBER

POST WWII



"HALE ALOHA"

THE STUDENT HOUSING PROGRAM AT UH MANOA BEGAN IN 1922, WHEN "HALE ALOHA" WAS BUILT. THE ORIGINAL HALE ALOHA WAS A WOODEN BUILDING WHICH WAS LOCATED BETWEEN GEORGE HALL AND UNIVERSITY AVENUE, AND IT HOUSED WOMEN ONLY. IT WAS COMMONLY CALLED "THE CHICKEN COOP," AND WAS IN USE UNTIL THE (FIRST) FREAR HALL WAS BUILT IN 1952.

DURING THE 1920S AND 1930S, MEN WERE HOUSED IN "HAWAII HALL ANNEX #1," AND THIS DORMITORY WAS AFFECTIONATELY CALLED "THE BOILER FACTORY," PRESUMABLY BECAUSE IT COULD GET QUITE WARM INSIDE.

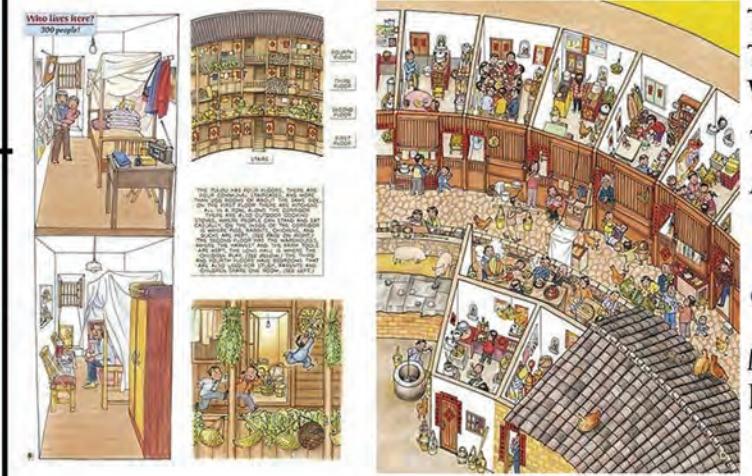
EUROPE (STOCKHOLM, SWEDEN)



THIS IS A SMALL, FREE-STANDING STUDENT HOUSE PROTOTYPE. THE SPACE IS ON OFFER TO THE STUDENT WHO MAKES THE STRONGEST CASE AS TO WHY THEY SHOULD LIVE IN IT. ONCE THE BEST CANDIDATE HAS BEEN SELECTED, THEY CAN EXPECT TO PAY A VERY MODEST SKr30,000 (\$4,460, £2,840) PER YEAR IN RENT.



ASIA "TULOU"



TULOUS; MULTI-UNIT CHINESE BUILDINGS THAT SET WAY FOR A COMPACTED EFFICIENT WAY OF LIVING.

TULOU TRANSLATES TO "EARTHEN HOUSE" AND ARE LARGE, GENERALLY CIRCULAR, FORTRESS-LIKE STRUCTURES THAT WERE A POPULAR FORM OF BUILDING FROM THE 12TH THROUGH 20TH CENTURY

MOST POPULAR FORM IS THE FUJIAN TULOU; THE FUJIAN PROVINCE HAS OVER 20K OF THEM.

WEST HOLLYWOOD "SIERRA BONITA"



THE BUILDING, WHICH ALSO CONTAINS THE OFFICES FOR THE DEVELOPER WEST HOLLYWOOD COMMUNITY HOUSING, SOMEHOW MANAGES TO BE BEAUTIFUL, CHEAPLY BUILT (IT COST \$14 MILLION), ENERGY-EFFICIENT, AND LOW-IMPACT, ALL AT THE SAME TIME. AND WHILE MOST LOW-INCOME HOUSING MAINTAINS AN INSTITUTIONAL LOOK FULL OF SPLASHY COLORS AND OTHER GIMMICKS THAT COVER UP CHEAPNESS AND OFTEN LEND A PATRONIZING AIR, THESE UNITS DON'T FEEL LOW-INCOME AT ALL.

IN FACT, DESPITE THEIR SMALL SIZE AND SIMPLICITY, THEY HAVE AN AIR OF SOPHISTICATION THAT EXPLAINS WHY THEY'VE ATTRACTED A LIST OF ABOUT 3,000 APPLICANTS FOR THEIR 42 SPOTS.

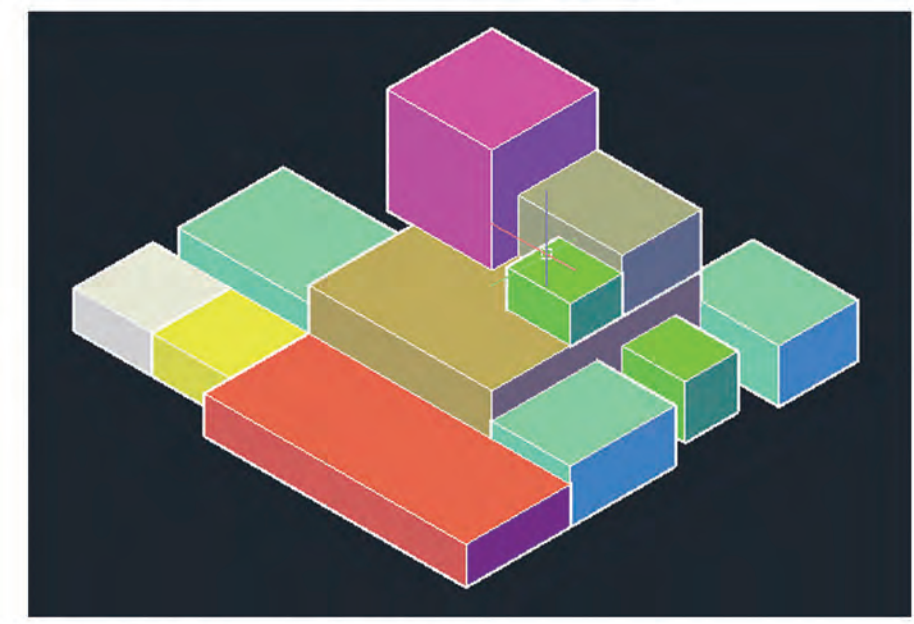


LEGEND

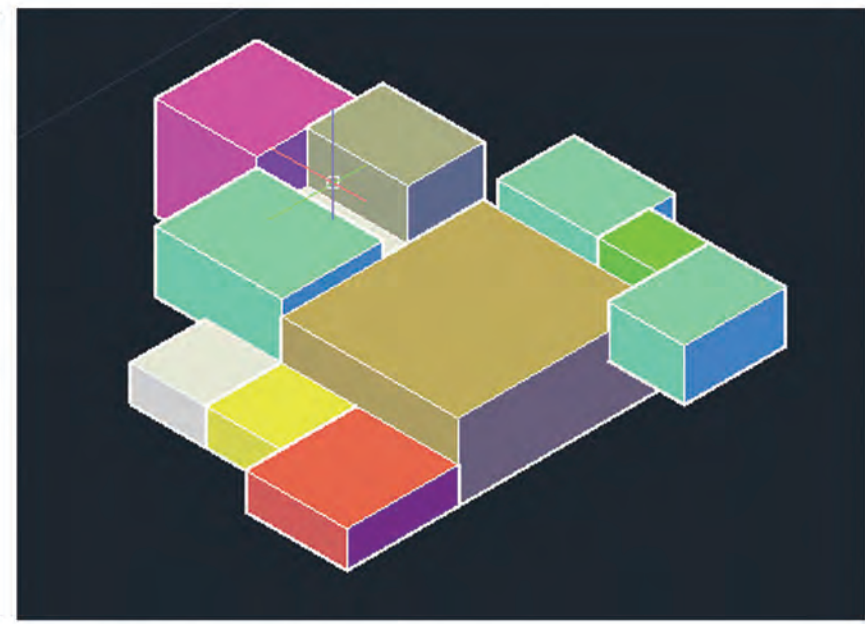
- bathroom
 - bedroom
 - Defpoints
 - dining
 - entry
 - kitchen
 - library
 - living room
 - storage
 - studio
- Lightbulb icon: bathroom, bedroom, Defpoints, dining, entry, kitchen, library, living room, storage, studio
- Sun icon: bathroom, bedroom, Defpoints, dining, entry, kitchen, library, living room, storage, studio
- Room icon: bathroom, bedroom, Defpoints, dining, entry, kitchen, library, living room, storage, studio
- Color key: green, cyan, blue, red, yellow, pink, brown, white, black

MICRO-UNITS

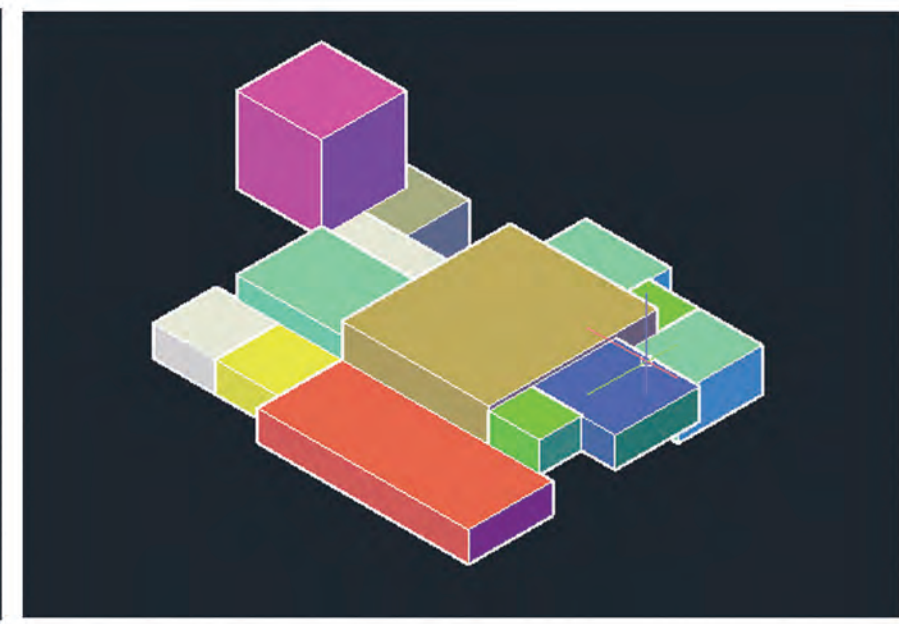
LUIS WEBER, DESIGN V, PROFESSOR BOURATOGLU



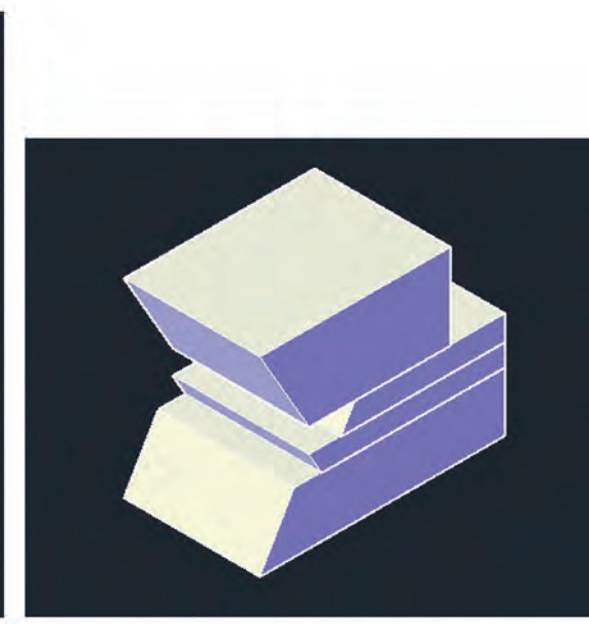
UNIT 1 NW ISOMETRIC



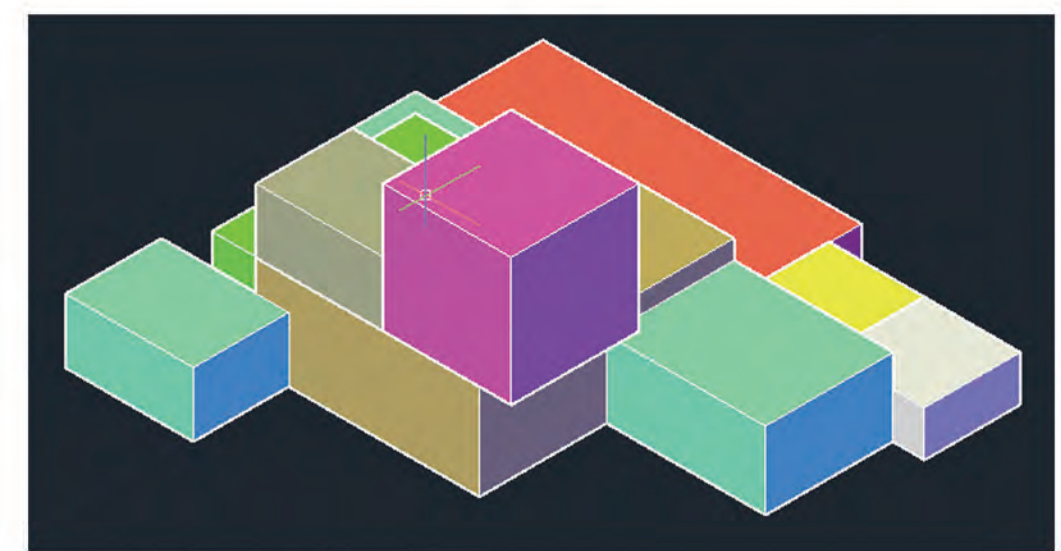
UNIT 2 NW ISOMETRIC



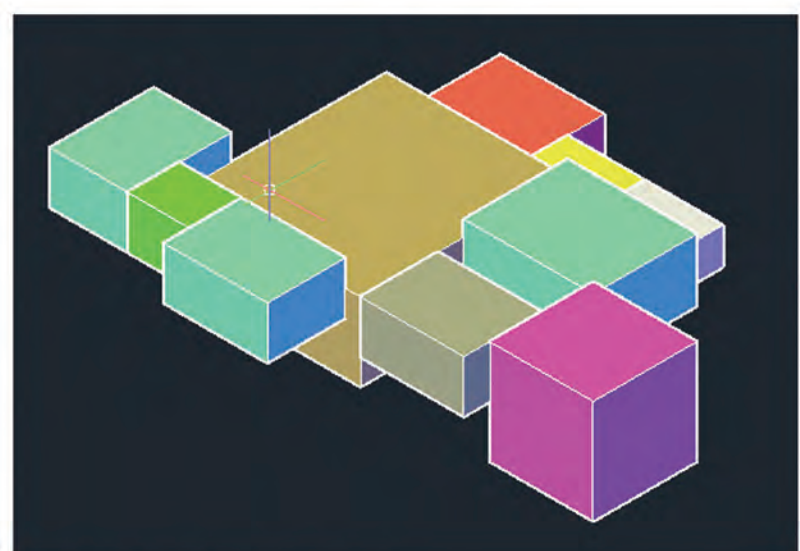
UNIT 3 NW ISOMETRIC



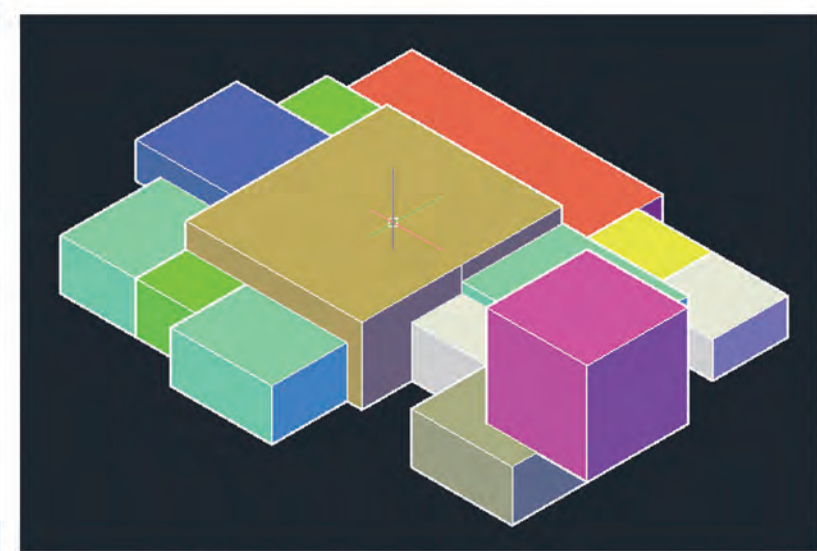
UNIT 4 NW ISOMETRIC



UNIT 1 SE ISOMETRIC



UNIT 2 SE ISOMETRIC



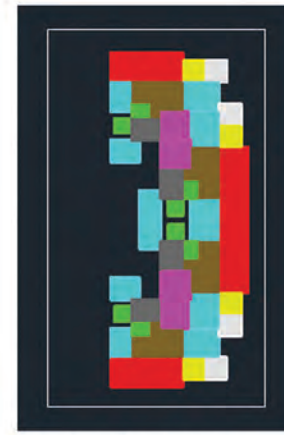
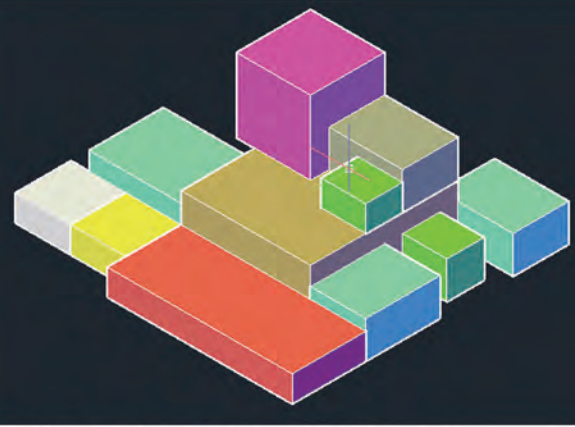
UNIT 3 SE ISOMETRIC



UNIT 4 SE ISOMETRIC

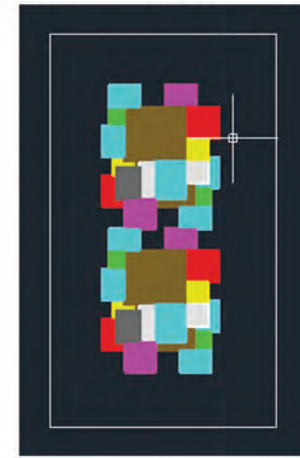
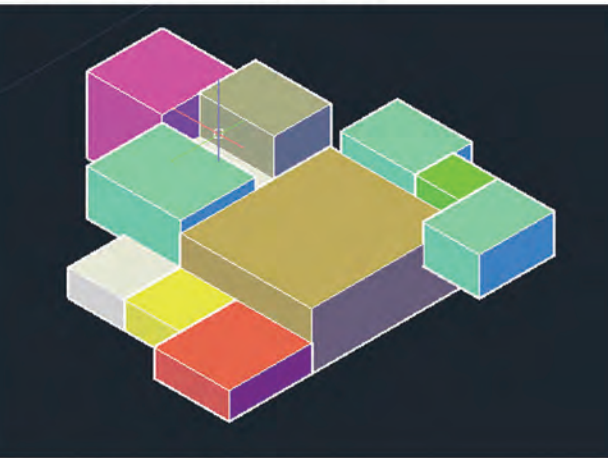
MACRO-UNITS

LUIS WEBER, DESIGN V, PROFESSOR BOURATOGLOU



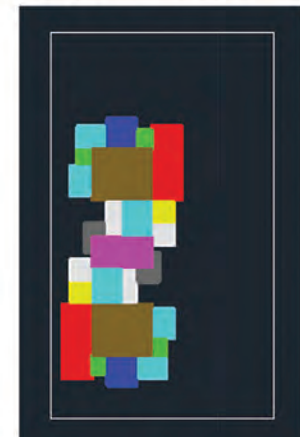
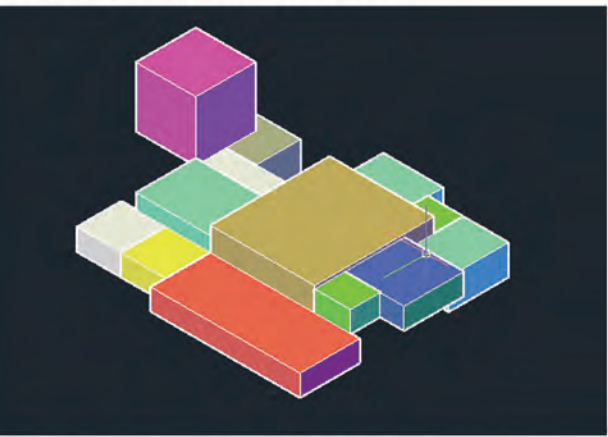
UNIT 1 NW ISOMETRIC

UNIT 1 PLAN



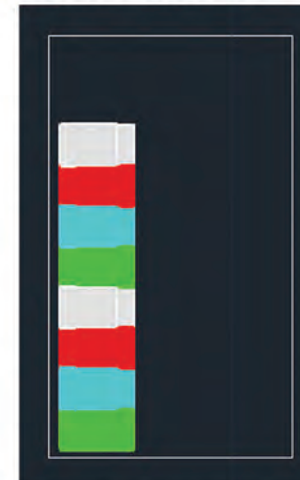
UNIT 2 NW ISOMETRIC

UNIT 2 PLAN



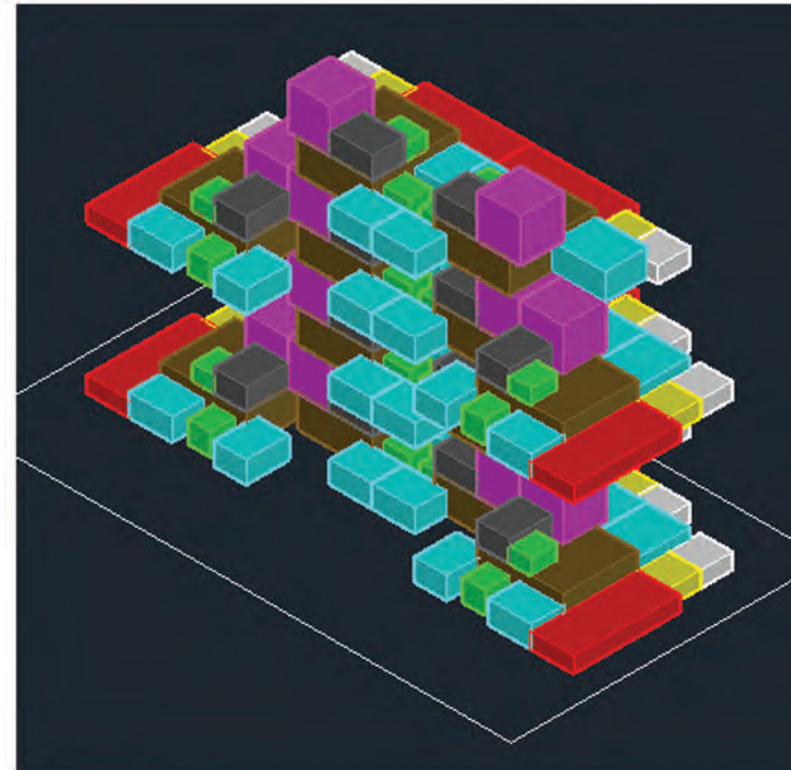
UNIT 3 NW ISOMETRIC

UNIT 3 PLAN

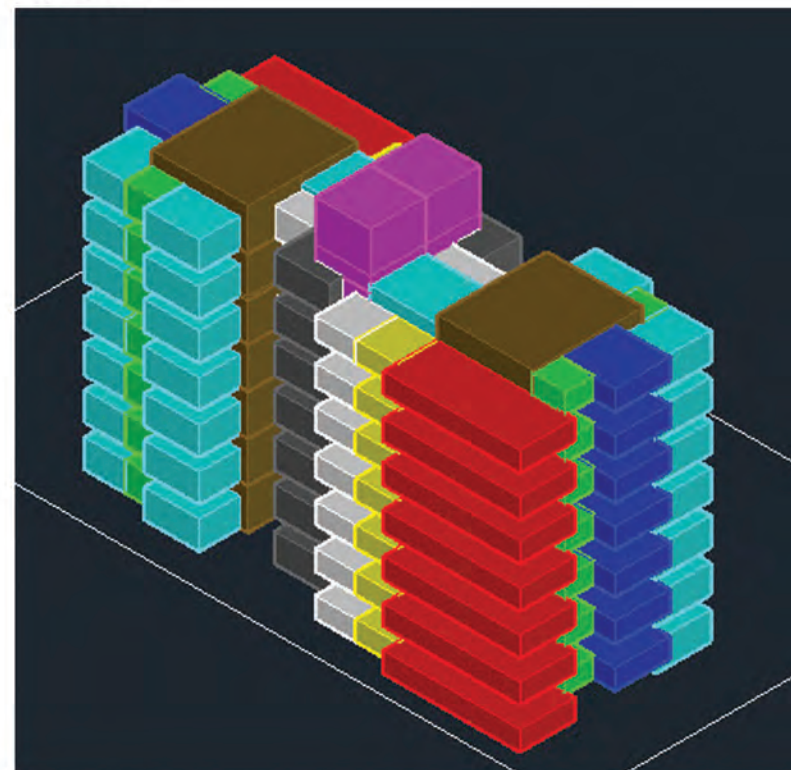


UNIT 4 NW ISOMETRIC

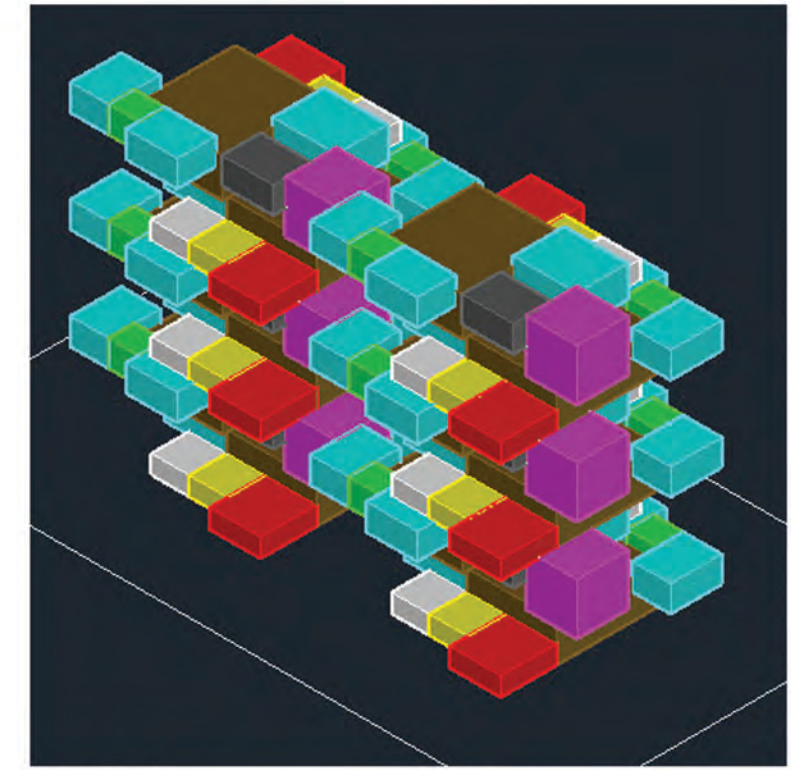
UNIT 4 PLAN



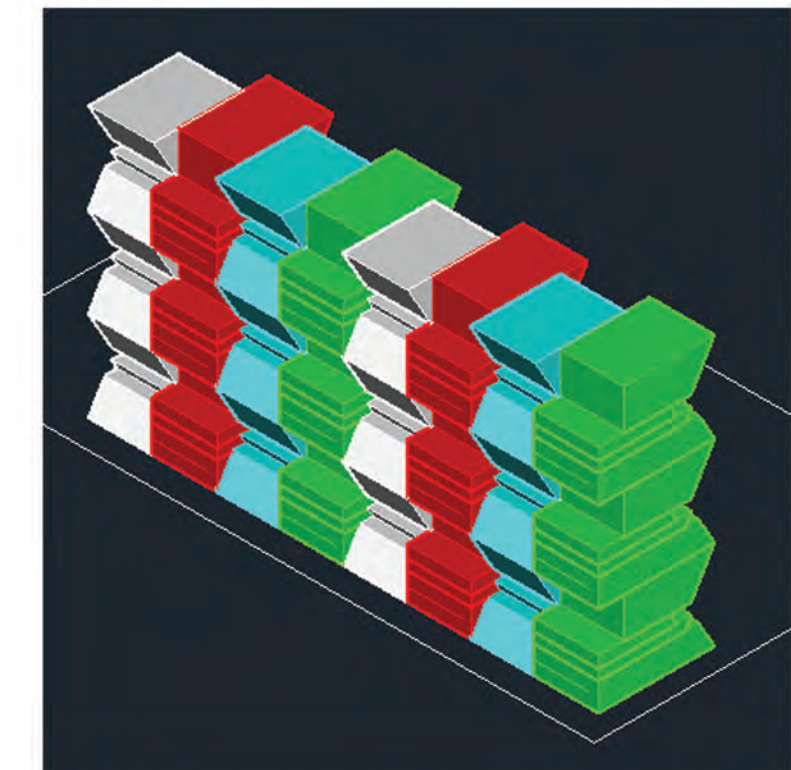
UNIT 1



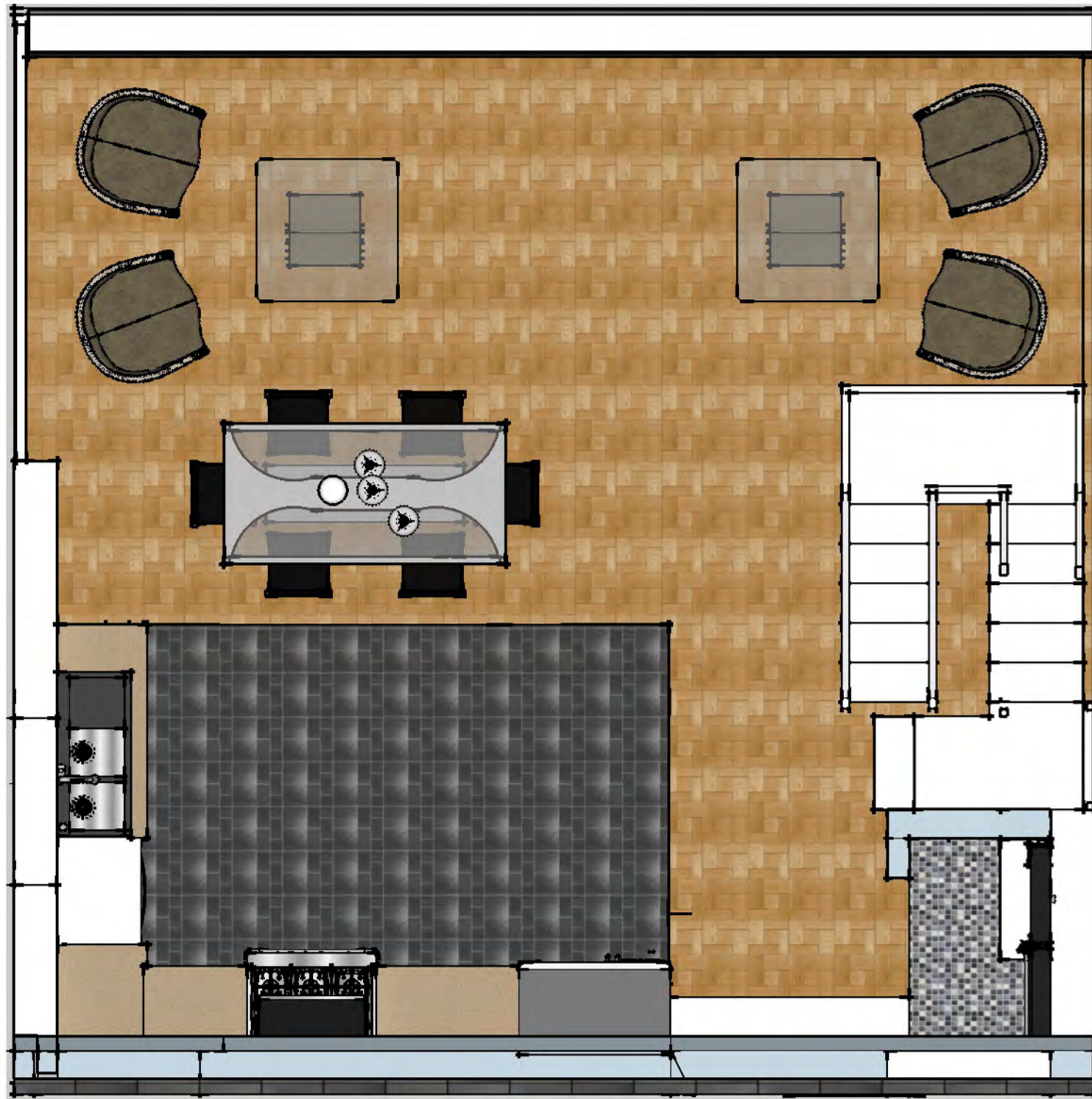
UNIT 3



UNIT 2



UNIT 4



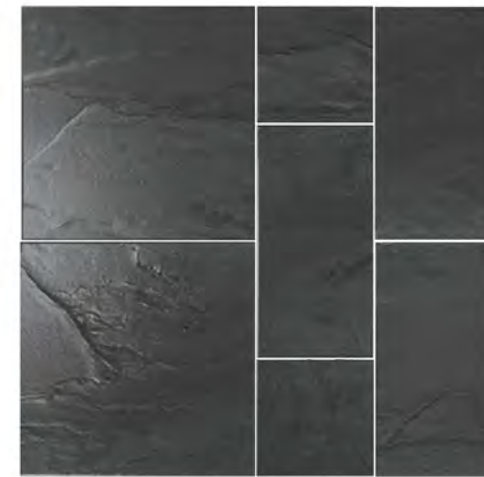
FIRST FLOOR PLAN



DINNING ROOM FLOORING TILES



KITCHEN BACKSPLASH TILES



KITCHEN FLOORING TILES



BATHROOM WALL TILES



WOODEN CABINETS

FIRST FLOOR PLAN

LUIS WEBER
DESIGN V
PROFESSOR BOURATOGLU



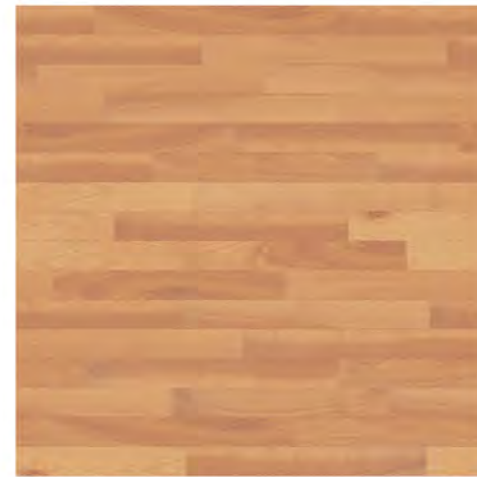
SECOND FLOOR PLAN



SLATE BEDROOM FLOORING TILES



BATHROOM FLOORING TILES



HALLWAY WOOD FLOORING TILES



BATHROOM WALL TILES

SECOND FLOOR PLAN

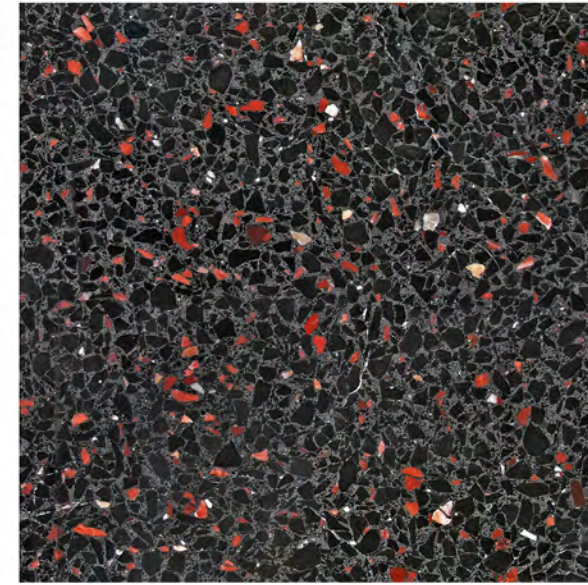
LUIS WEBER
 DESIGN V
 PROFESSOR BOURATOGLU



THIRD FLOOR PLAN



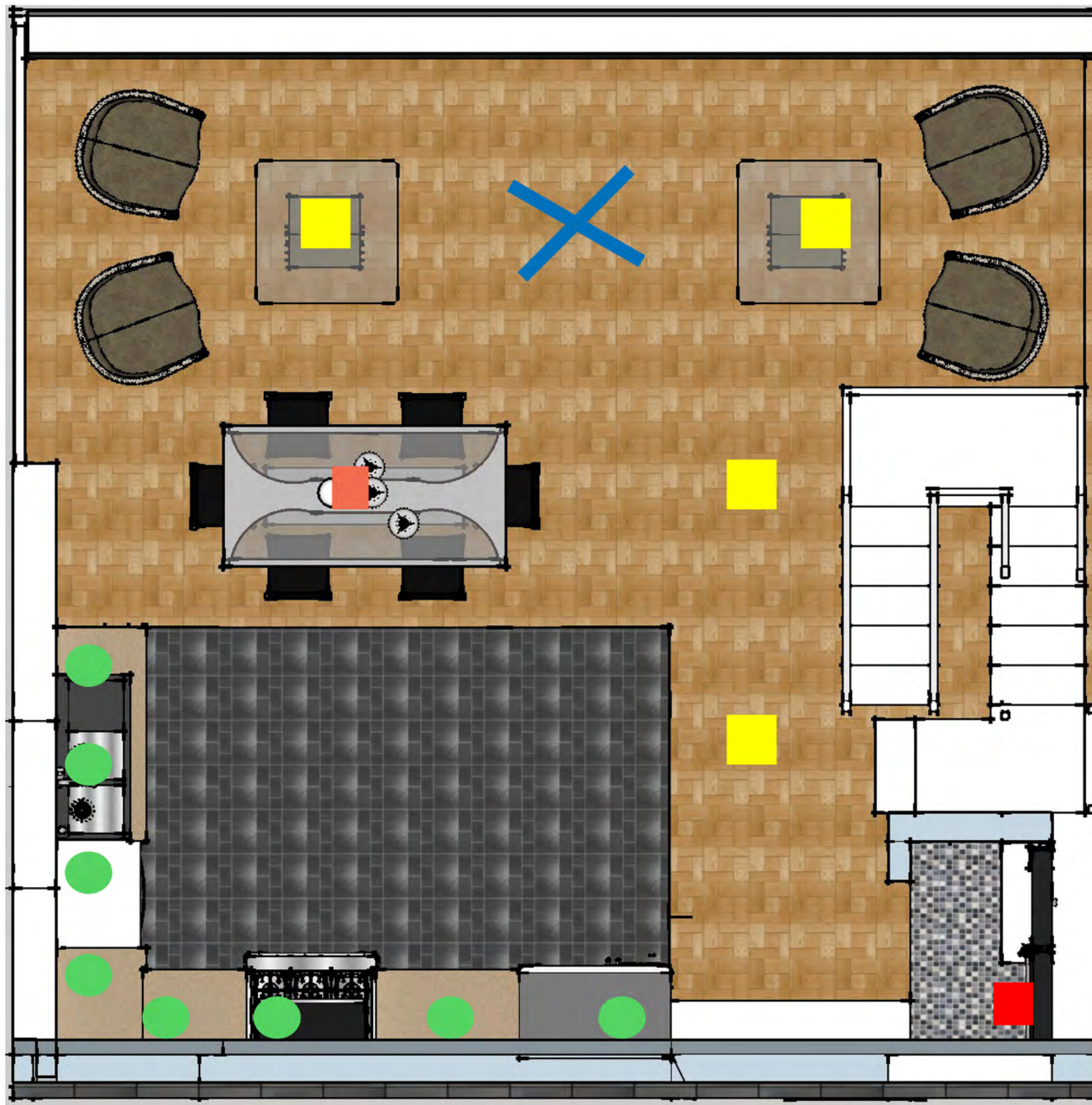
FULL THIRD FLOOR
TILES



RED STONE GRANITE



GREEN FOR PLANTS

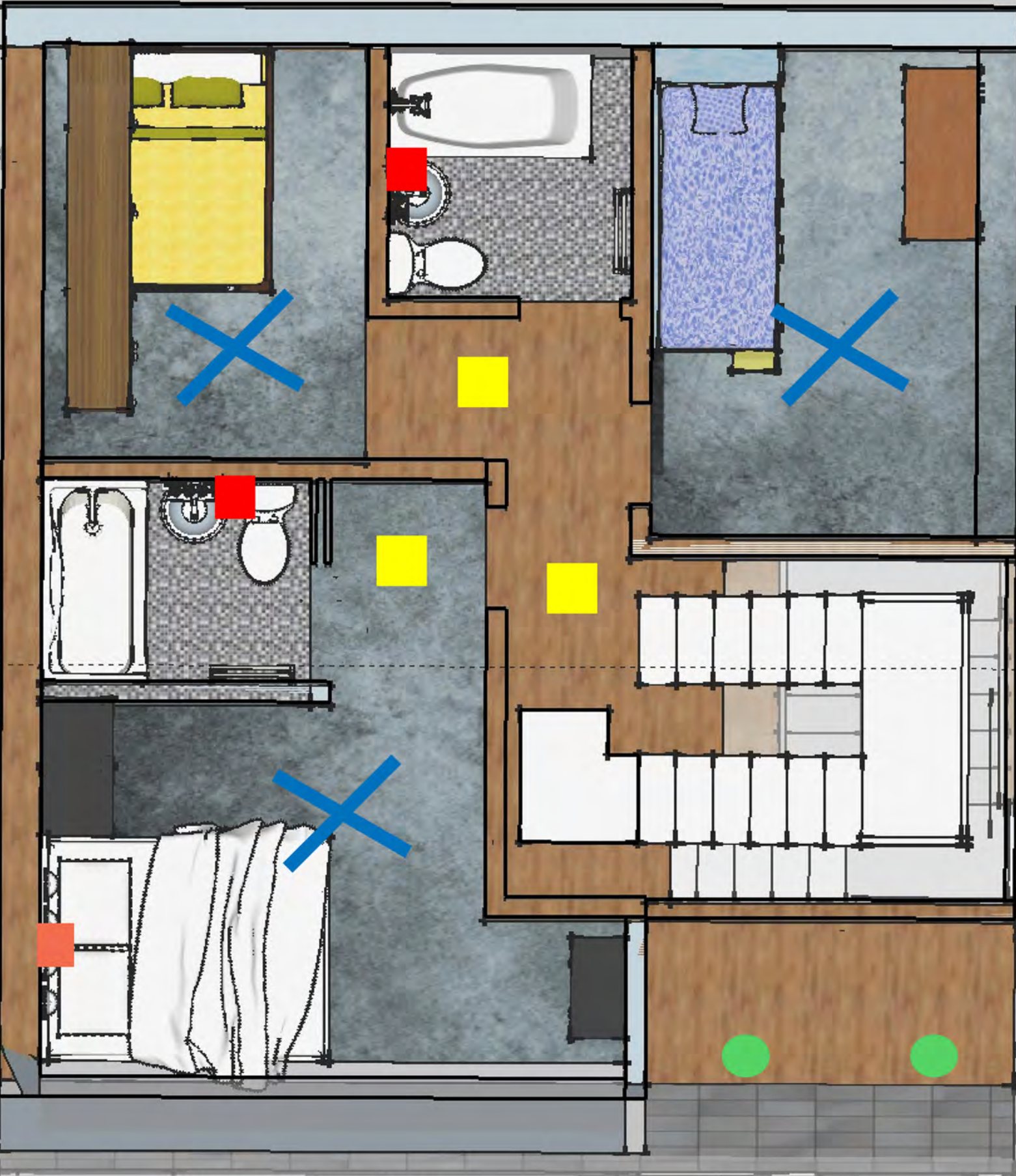


FIRST FLOOR PLAN



REFLECTED CEILING PLAN

LUIS WEBER
 DESIGN V
 PROFESSOR BOURATOGLU



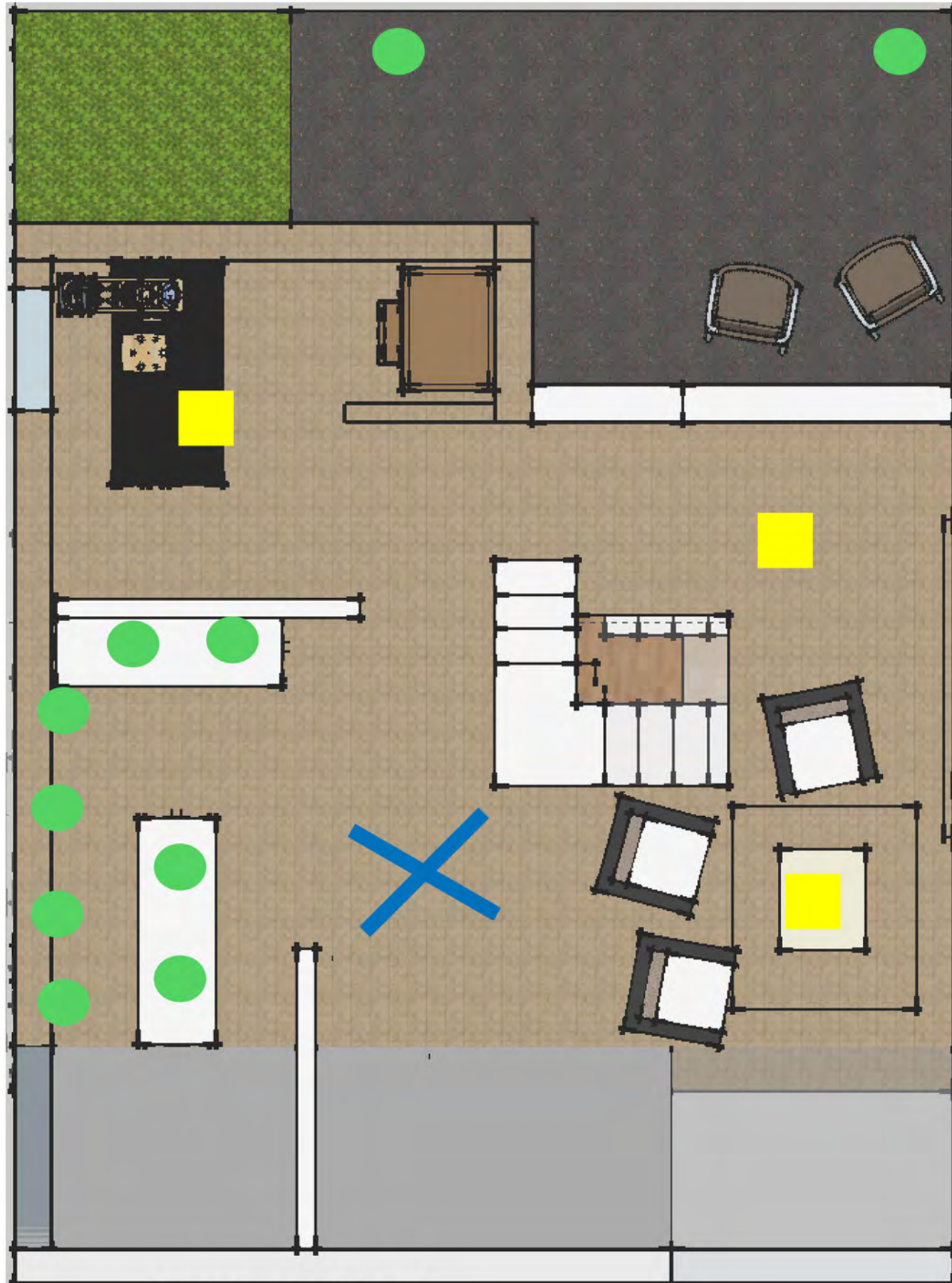
SECOND FLOOR PLAN



REFLECTED CEILING PLAN



LUIS WEBER
 DESIGN V
 PROFESSOR BOURATOGLU

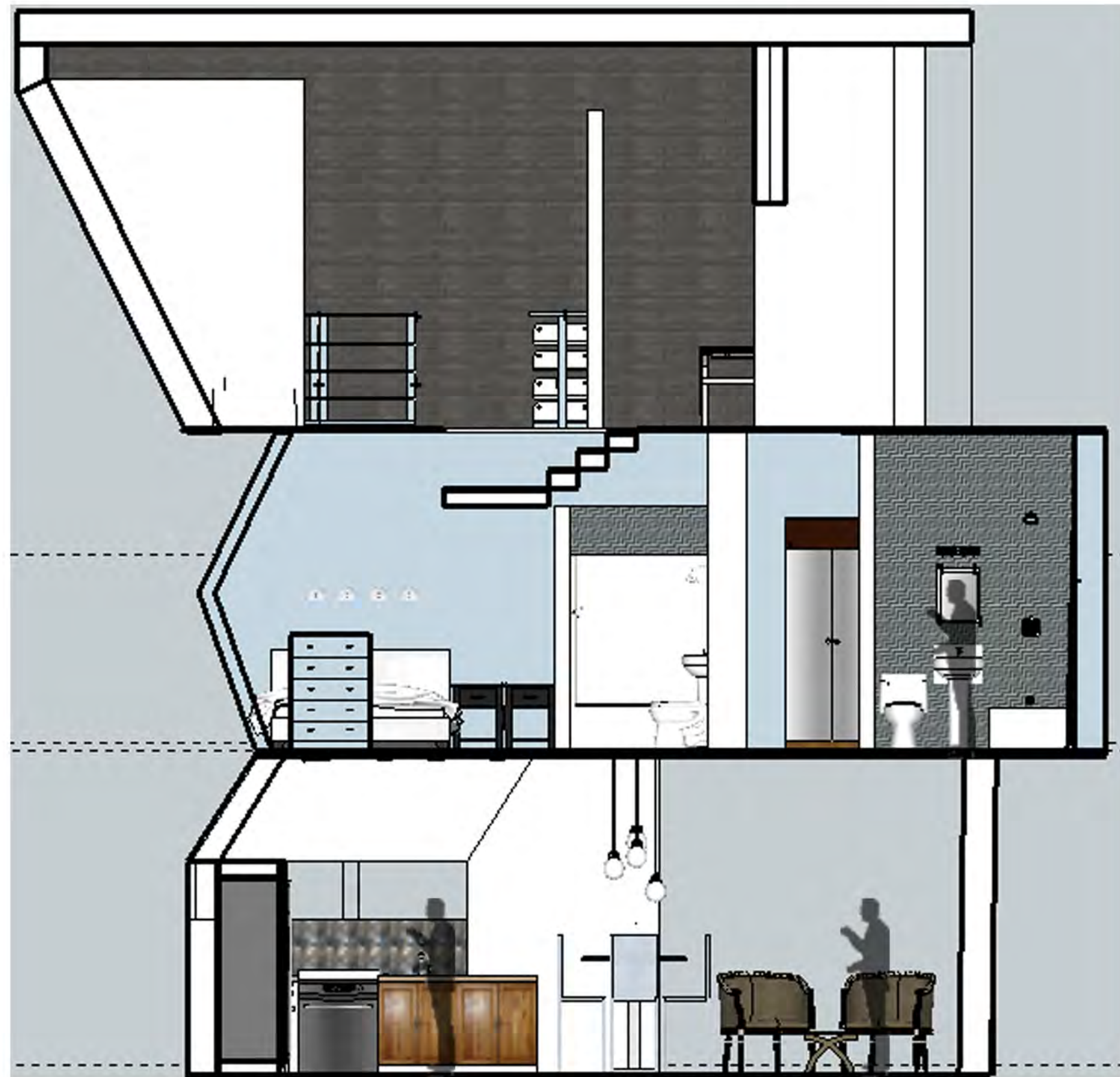


THIRD FLOOR PLAN

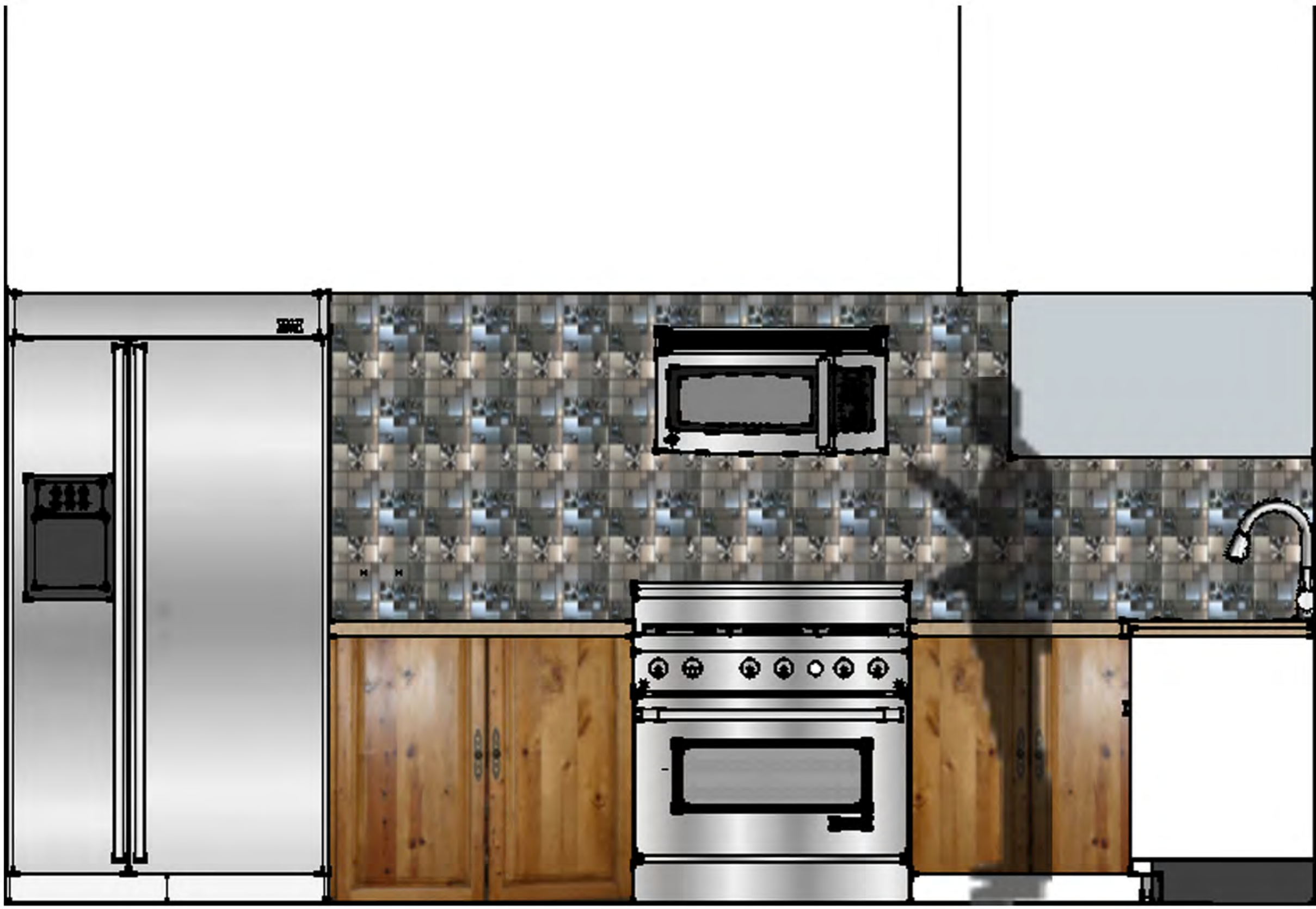


REFLECTED CEILING PLAN

LUIS WEBER
DESIGN V
PROFESSOR BOURATOGLU



WEST SECTION



KITHCEN ELEVATION



SAMSUNG STAINLESS-STEEL FRIDGE



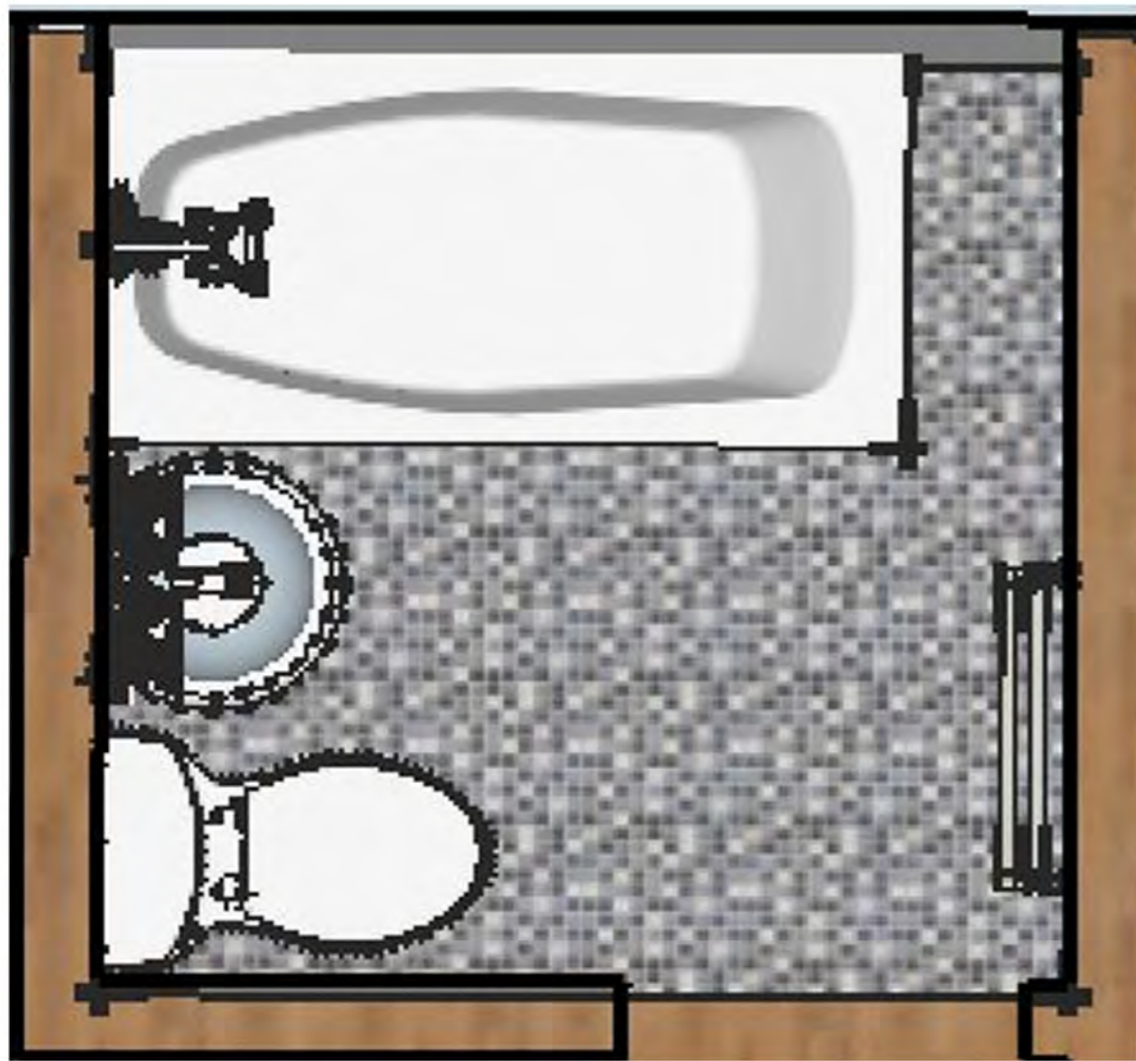
KENMORE STONE OVEN



WHIRLPOOL MICROWAVE WITH VENT

ENLARGED KITCHEN

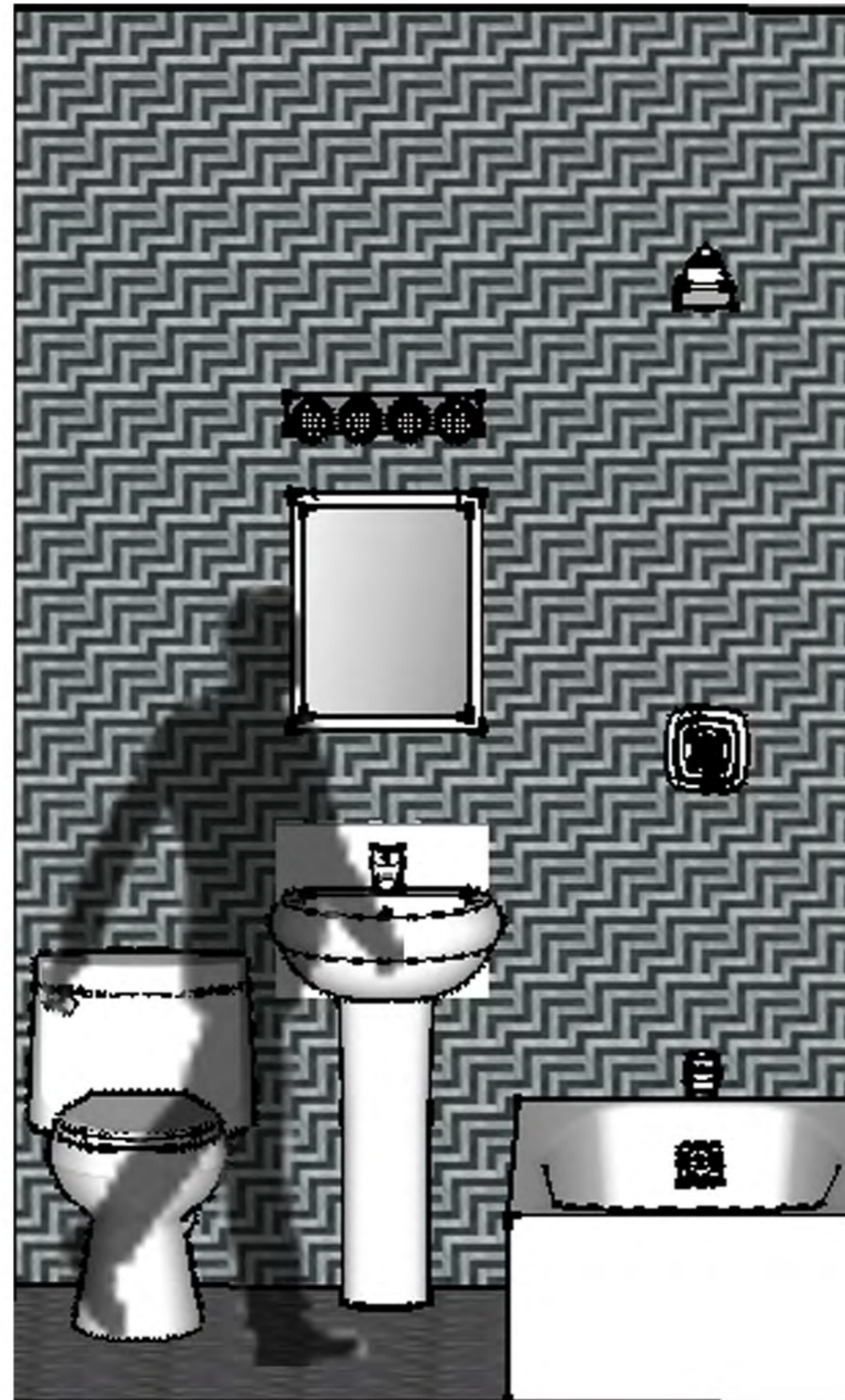
LUIS WEBER
DESIGN V
PROFESSOR BOURATOLOU



MAIN BATHROOM SECOND FLOOR



THOMAS LIGHTING MIRROR LIGHT FIXTURES



CIMARRON COMFORT HEIGHT TOILET



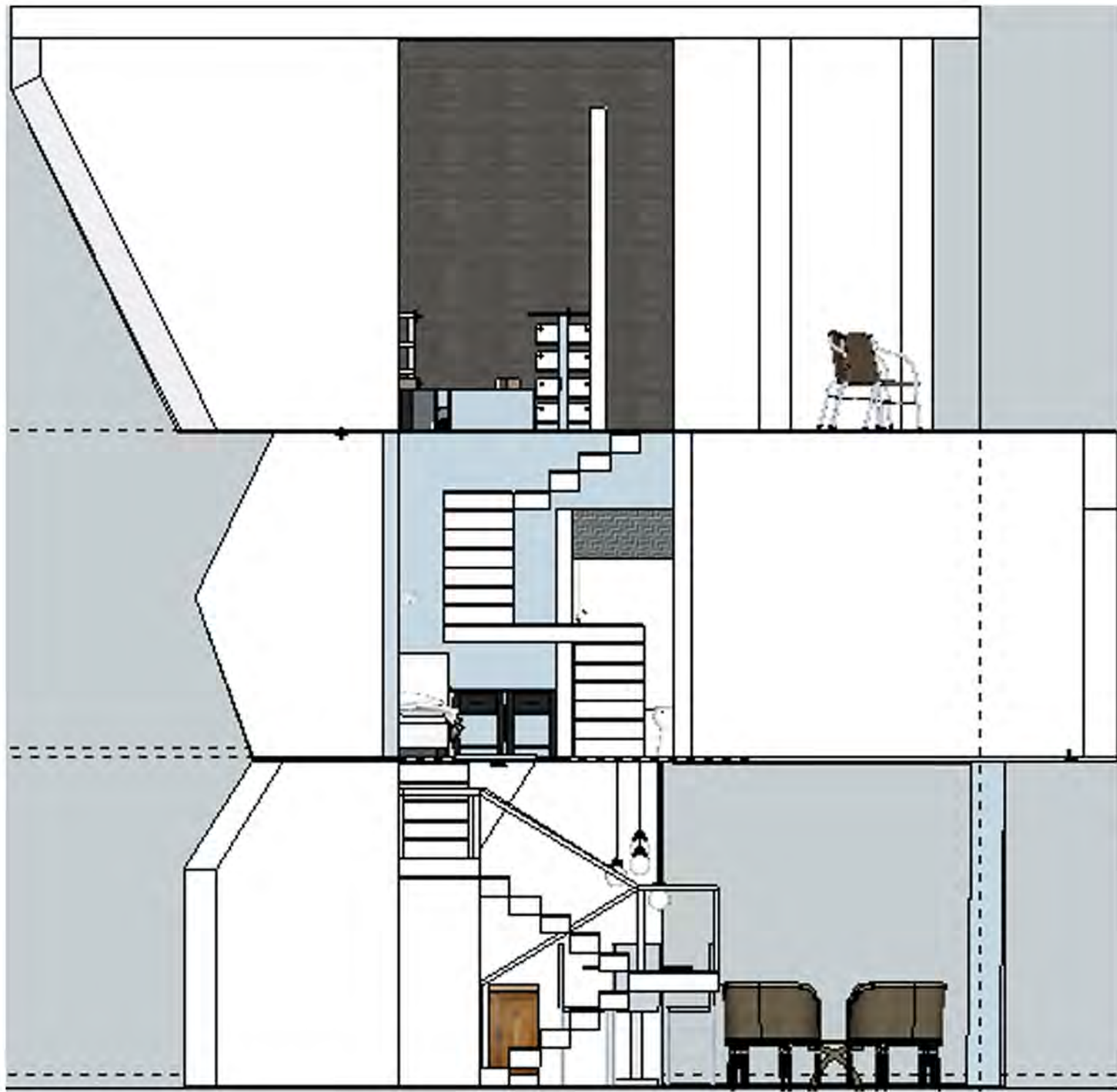
MARGAUX RITE-TEMP SHOWER HEAD



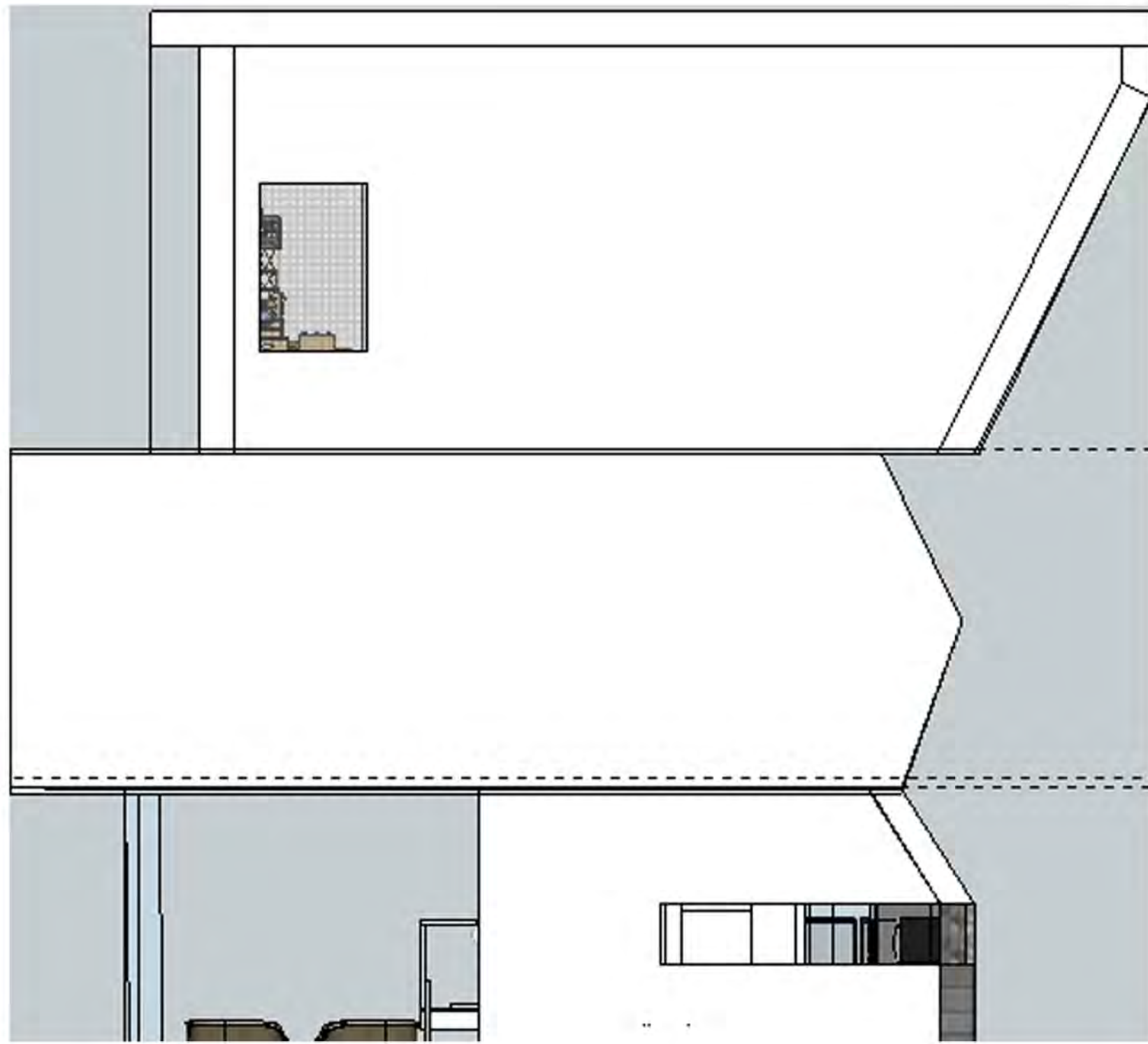
PORTRAIT PEDESTAL BATHROOM SINK

LUIS WEBER
DESIGN V
PROFESSOR BOURATOGLU

MATRIX AND BUBBLE DIAGRAM



WEST ELEVATION



EAST ELEVATION

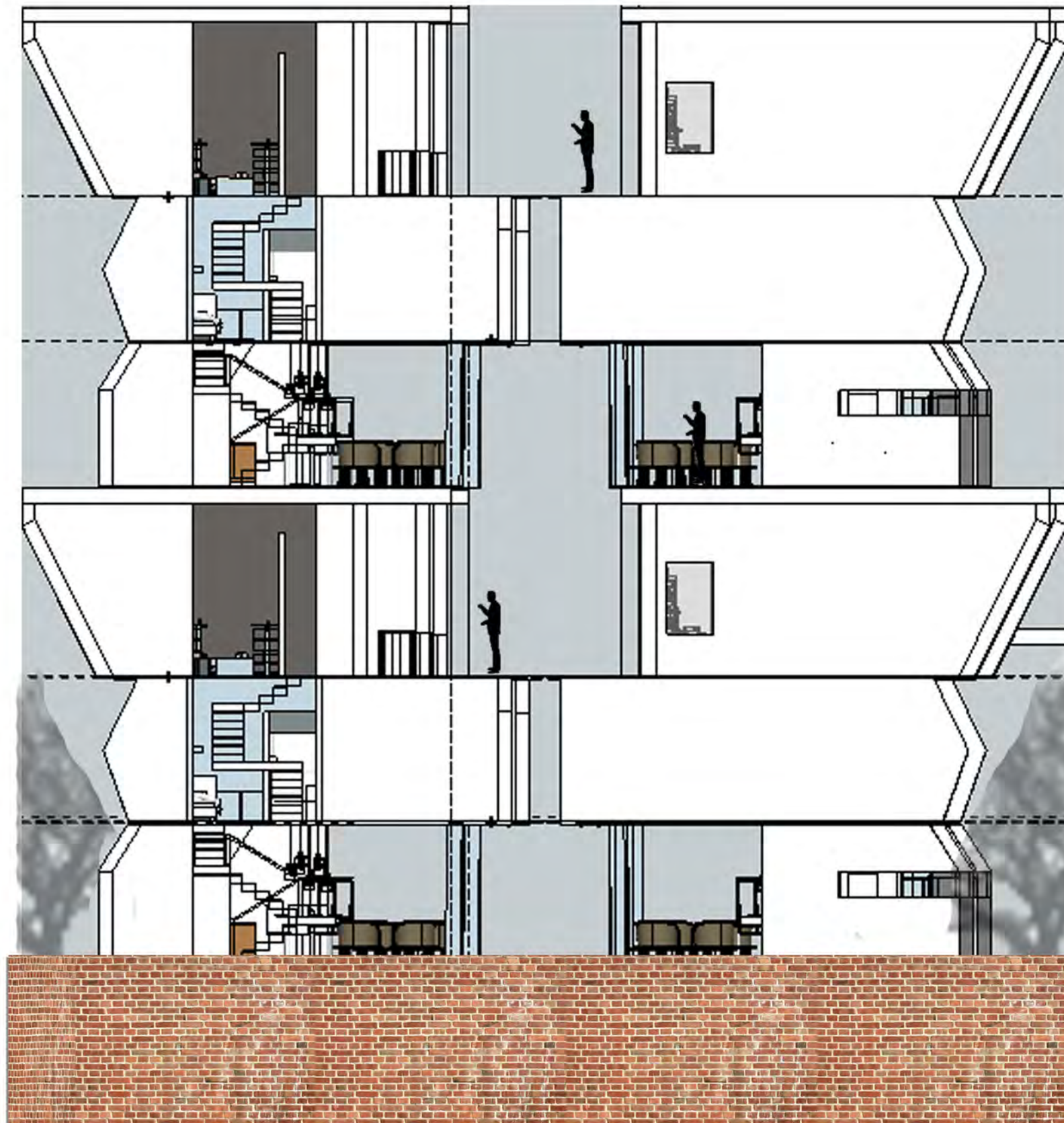
ELEVATIONS

LUIS WEBER
DESIGN V
PROFESSOR BOURATOGLU



MACRO ELEVATIONS

LUIS WEBER
DESIGN V
PROFESSOR BOURATOLOU



MACRO ELEVATIONS CONT'D

LUIS WEBER
DESIGN V
PROFESSOR BOURATOGLU