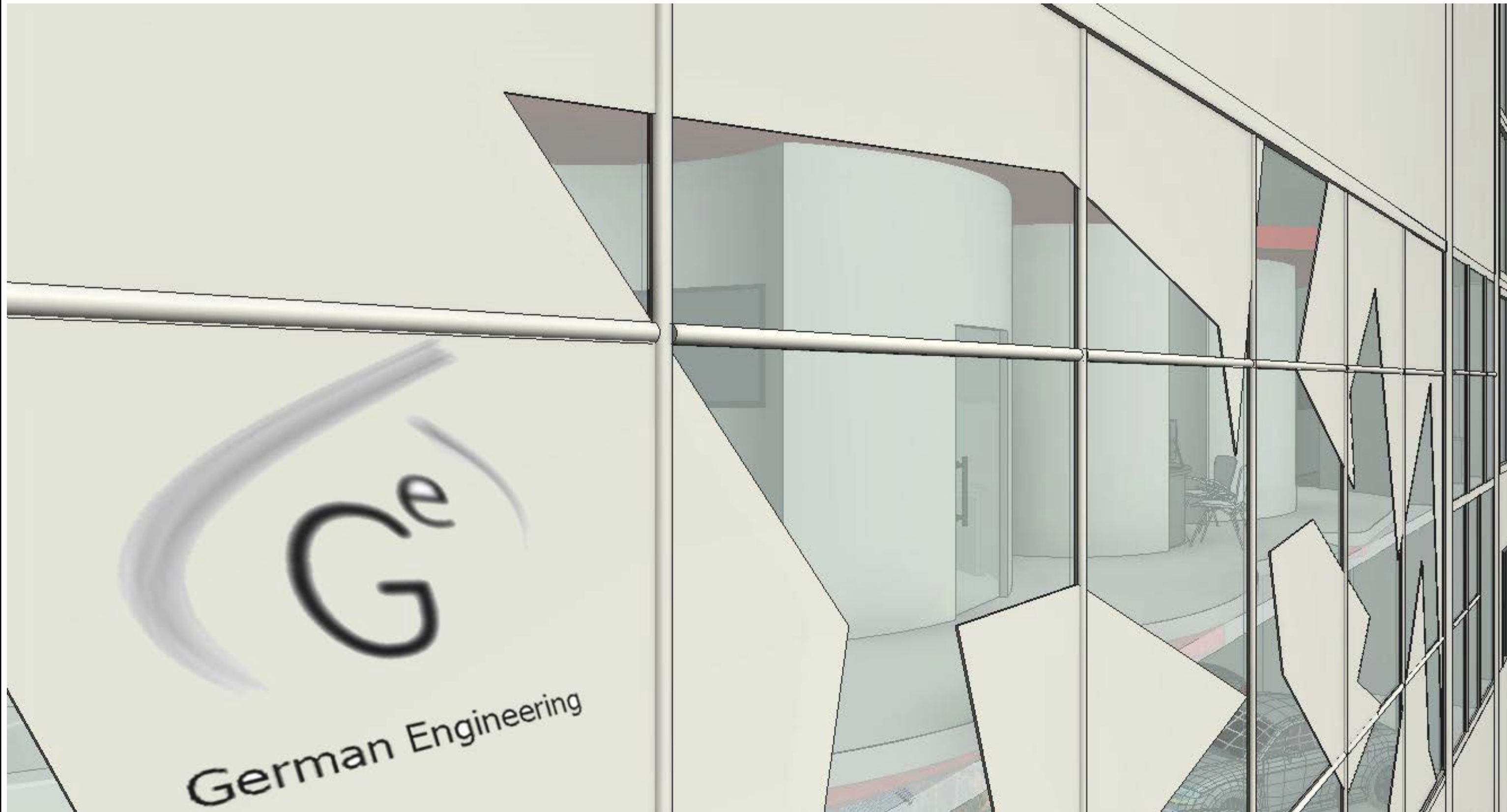
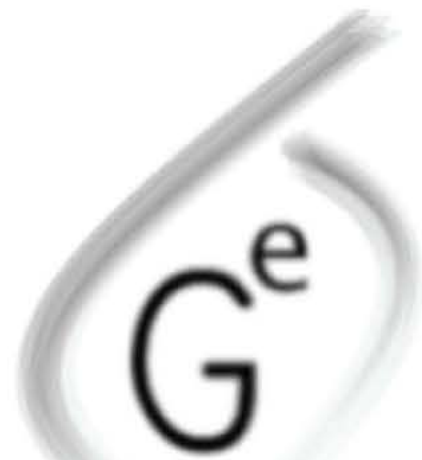


COMMERCIAL PROJECT - 37 LAFAYETTE AVENUE, BROOKLYN NY 11217



# GERMAN ENGINEERING

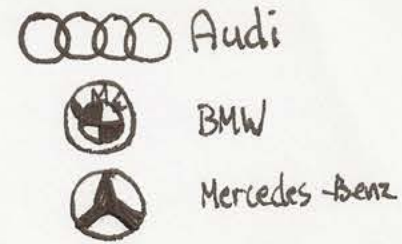
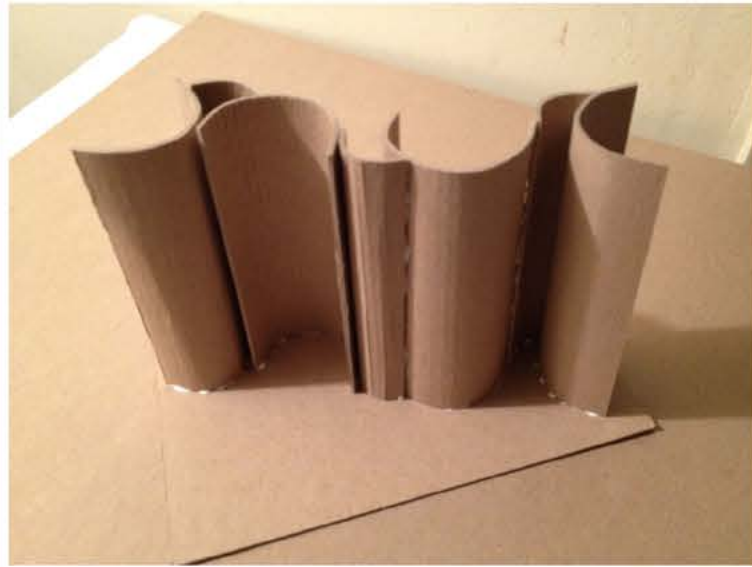


German Engineering



GERMAN ENGINEERING SPEAKS OF GERMANY'S ACHIEVEMENTS IN SCIENCE AND TECHNOLOGY. THEY REACHED SIGNIFICANT RESEARCH AND DEVELOPMENT EFFORTS THAT PROSPERED THEIR COUNTRY'S ECONOMY. GERMANY HAS BEEN THE HOME OF SOME OF THE MOST PROMINENT RESEARCHERS IN VARIOUS SCIENTIFIC DISCIPLINES, NOTABLY PHYSICS, MATHEMATICS, CHEMISTRY AND ENGINEERING. MY STORE CONCEPT IS GOING TO BE A CAR DEALERSHIP THAT SOLELY DEALS WITH GERMAN ENGINEERING, HENCE THE NAME AND LOGO. WE STRICTLY DEAL WITH MANUFACTURERS SUCH AS AUDI, BMW, AND MERCEDES. OUR GOAL IS TO INFLUENCE CUSTOMERS IN OUR LOVE FOR GERMAN VEHICLES AND HAVE OUR CUSTOMERS LEAVE THE DEALERSHIP SATISFIED AND LEARN SOMETHING NEW ABOUT WHAT MAKES GERMAN ENGINEERING SO SPECIAL.

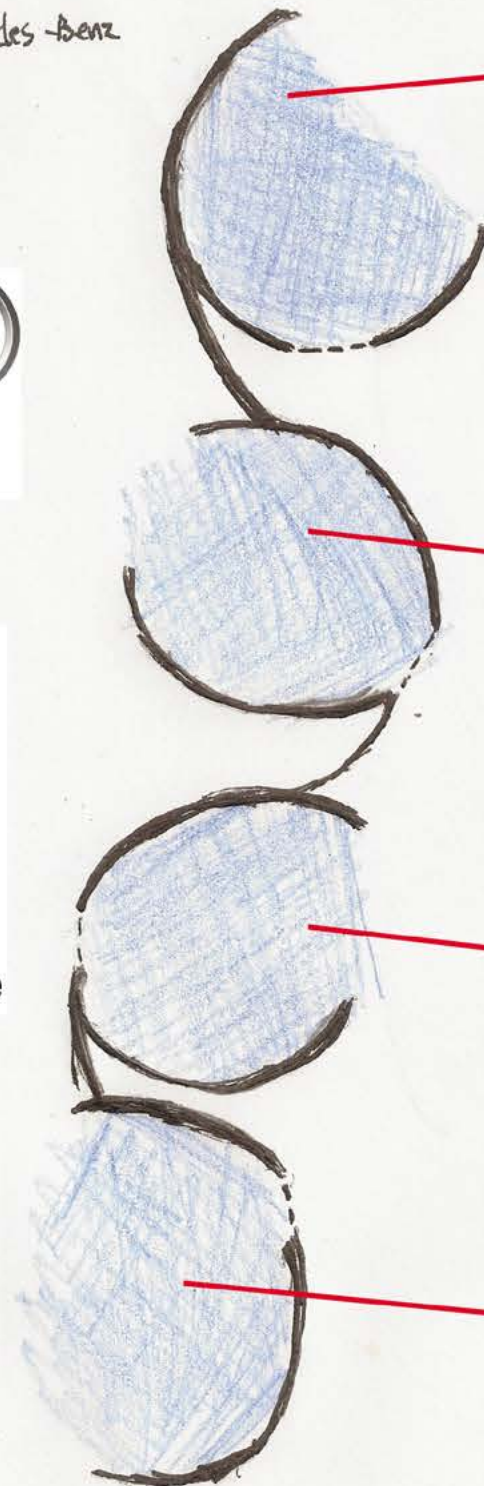
# GERMAN ENGINEERING



The Ultimate Driving Machine



Mercedes-Benz



The use of the German car companies circle geometry allows me to create a design concept consisting of circles that create voids.

Openings allow to separate customers and car salesmen or employee.

My design concept will be used for the 2nd floor.

These circular voids allows me to create conventional space for private use such as offices



In my concept, I incorporated the three insignia's of my store concept of german engineering. With the use of the three symbols that Audi, BWM, and Mercedes-Benz are well-known for, i created curves that speak of the flow of the space. Each void in the circles will be used as office space for when customers decide to speak business in purchasing a German vehicle. Each symbol have a circles as their main geometry and using these circles allowed me to create conventional space for my store concept. In my concept, I wanted to separate private and public by enclosing surfaces such as my concept model and design. When finalizing the purchase of your very own ultimate driving machine, we try our best to make sure our customers are extremely comfortable with our experience of our store. We provide customer service by our "help yourself idea" with plenty of catalogs, specifications, different models, and plenty of visuals.

# 37 LAFAYETTE AVENUE, BROOKLYN, NY 11217

- BLOCK: 2108
- LOT: 17
- AREA: 2,150 SQ.FT
- FAR: 6.0
- ZONE: C6-1

## SETBACK:

- FRONT WALL: 85' OR 6 FLRS
- NARROW STREET IS A STREET THAT IS 75' WIDE. (20')
- WIDE STREET IS A STREET THAT IS 75' OR MORE IN WIDTH. (15')

**SKY EXPOSURE PLANE** IS A VIRTUAL SLOPING PLANE THAT BEIGNS AT A SPECIFIED HEIGHT ABOVE THE STREET LINE AND RISES INWARD OVER THE ZONING LOT AT A RATIO OF VERTICAL DISTANCE TO HORIZONTAL DISTANCE SET FORTH IN DISTRICT REGULATIONS:

- NARROW ST: 2.7=1
- WIDE ST: 5.6=1

## NEIGHBORING BUILDING:

RIGHT TO LEFT

- 21.5' x 100' x 45'
- 21.5' x 100' x 40'
- 86.33' x 100' x 60'

## FUTURE REAR BUILDING:

- SIDE: 168.12', 173.17', 199.75', 54.48'
- HEIGHT: -85'

## RULES

FAR(FLOOR AREA RATIO):

\*6 TIMES THE FLOOR AREA = 6

STORIES PERMITTED

REAR YARD PERMITTED

BUILDING HEIGHT

\*120' MAXIMUM HEIGHT

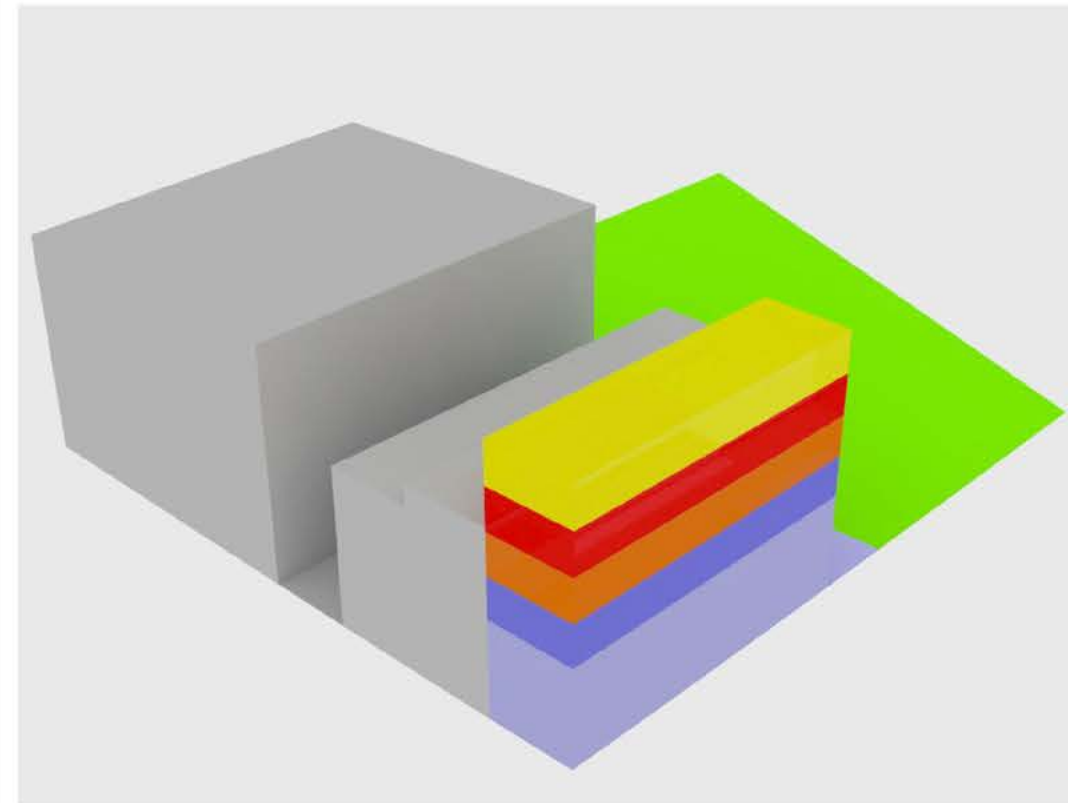
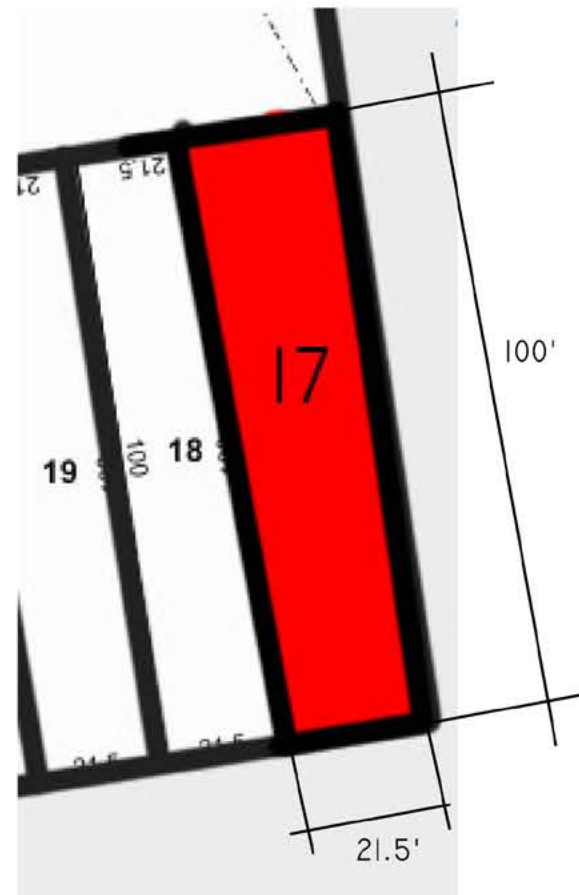
PUBLIC PLAZA:

\*EVERY 1' SQ.FT = 4' SQ.FT

FOR THE BUILDING AREA

ACCESSIBLE ROOF:

\*FLOOR AREA NOT COUNTED



## KEY

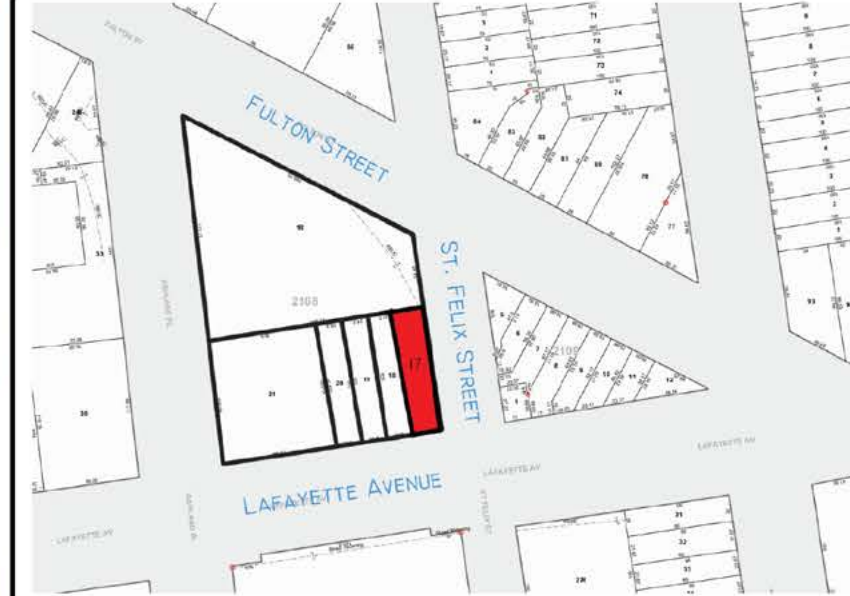
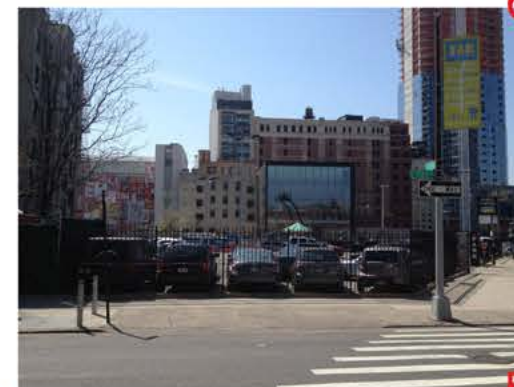
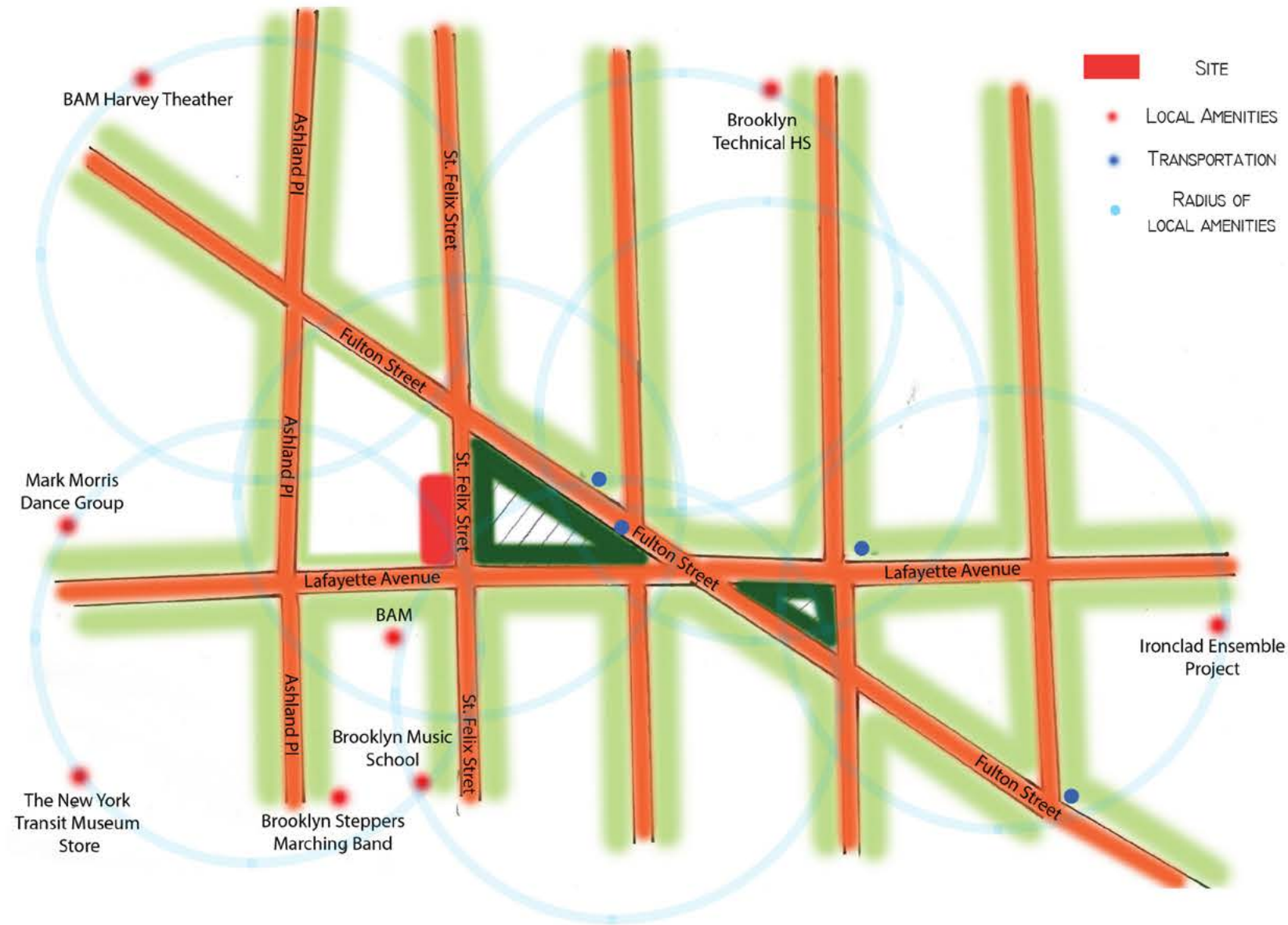
- RESIDENTIAL - 1ST FLR
- RESIDENTIAL - 2ND FLR
- RESIDENTIAL - 3RD FLR
- RESIDENTIAL - 4TH FLR
- ADJACENT BUILDINGS
- COMMERCIAL SPACE
- PARKING LOT



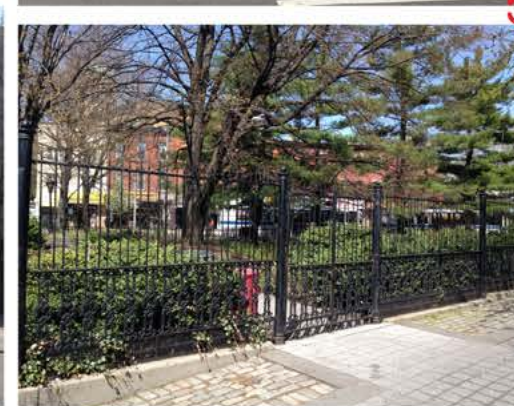
## GENERALITIES

- 2 FLOOR COMMERCIAL SPACE AT 24' HIGH
- 4 RESIDENTIAL SPACE AT 10' HIGH EACH
- DIMENSIONS: 21.5' x 80' x 64'
- SETBACK: 20' FOR REAR-YARD SPACE
- ACCESSIBLE ROOF FOR MAXIMUM AREA SPACE AND USE OF NATURAL LIGHTING.

# 37 LAFAYETTE AVENUE, BROOKLYN, NY 11217



IN THIS SITE ANALYSIS, I'VE NOTICED HOW OUR SITE LOCATION IS A HOMESTEAD FOR ART, MUSIC, DANCE AND ENTERTAINMENT. THE LOCATIONS I HAVE MARKED RED ARE THE SCHOOLS AND/OR BUILDINGS THAT RELATE TO THIS PROGRAM. FULTON STREET IS VERY IMPORTANT AND HAS MANY SUBWAY STATIONS AND BUS STOPS THAT MAKE MY SITE EASILY ACCESSIBLE THROUGH PUBLIC TRANSPORTATION. THROUGH CIRCLE DIAGRAMS, IT SHOWS THE RELATIONSHIP BETWEEN MY SITE AND THE LOCAL AMENITIES THAT IS WITHIN WALKING DISTANCE.



1

2

3

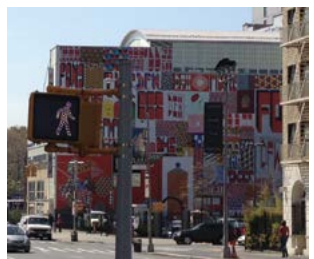
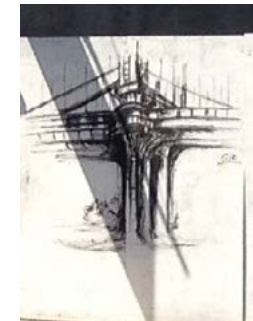
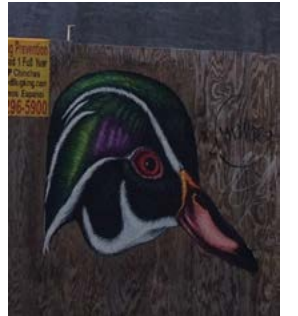
4

# 37 LAFAYETTE AVENUE, BROOKLYN NY 11217



German Engineering

## SITE INTERACTIONS



BARRY MCGEE MURAL  
3 LAFAYETTE AVENUE  
BROOKLYN, NY 11217

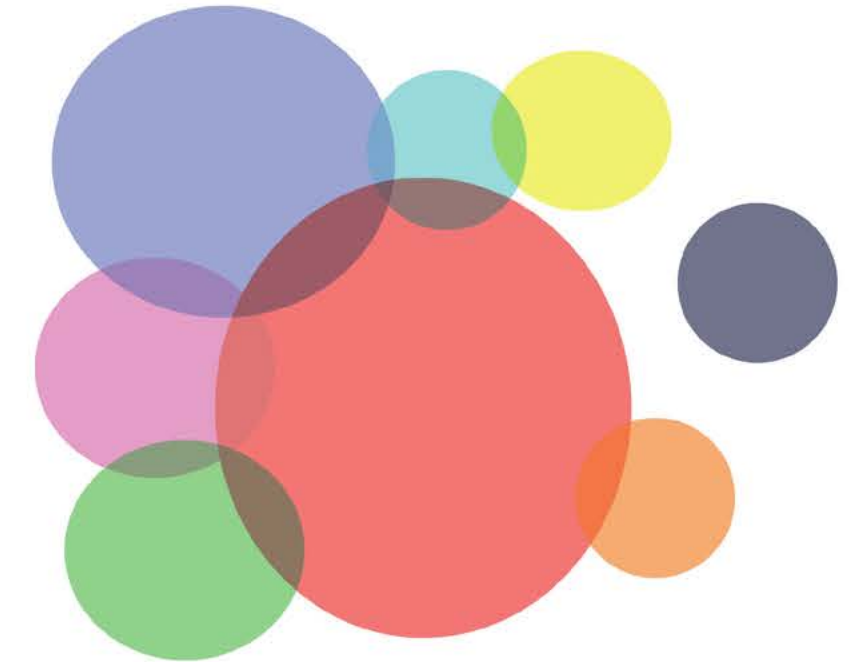
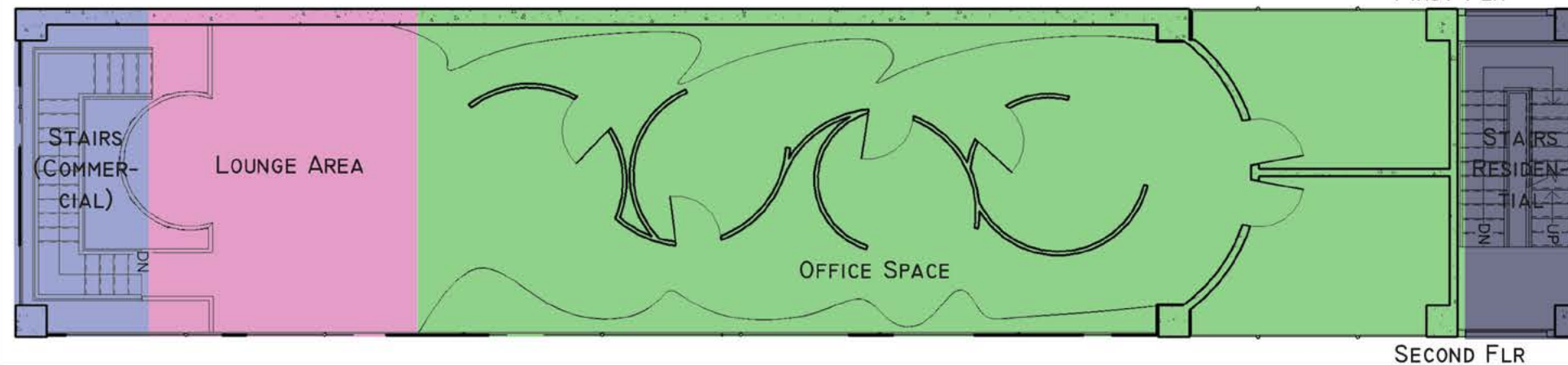
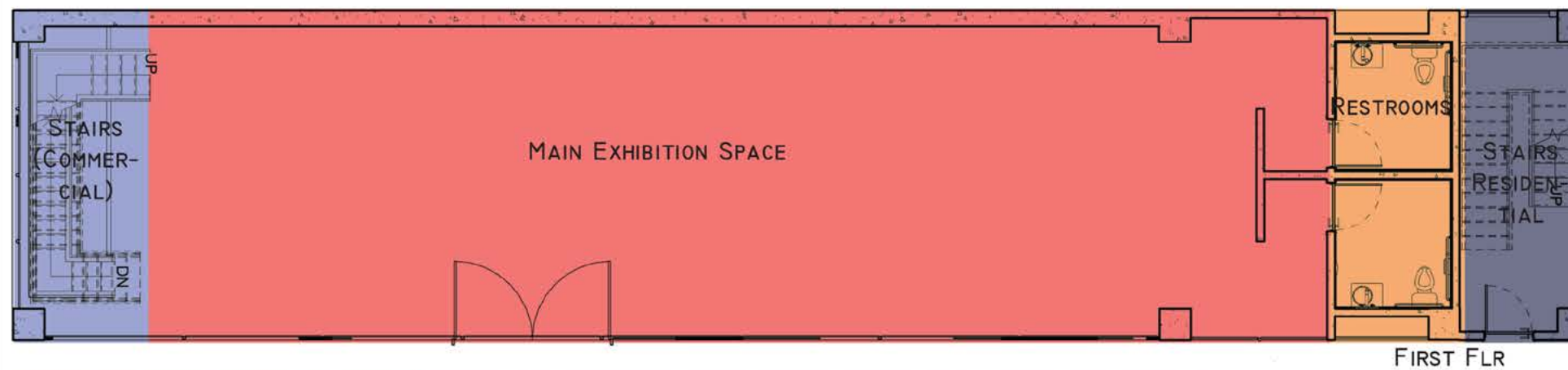
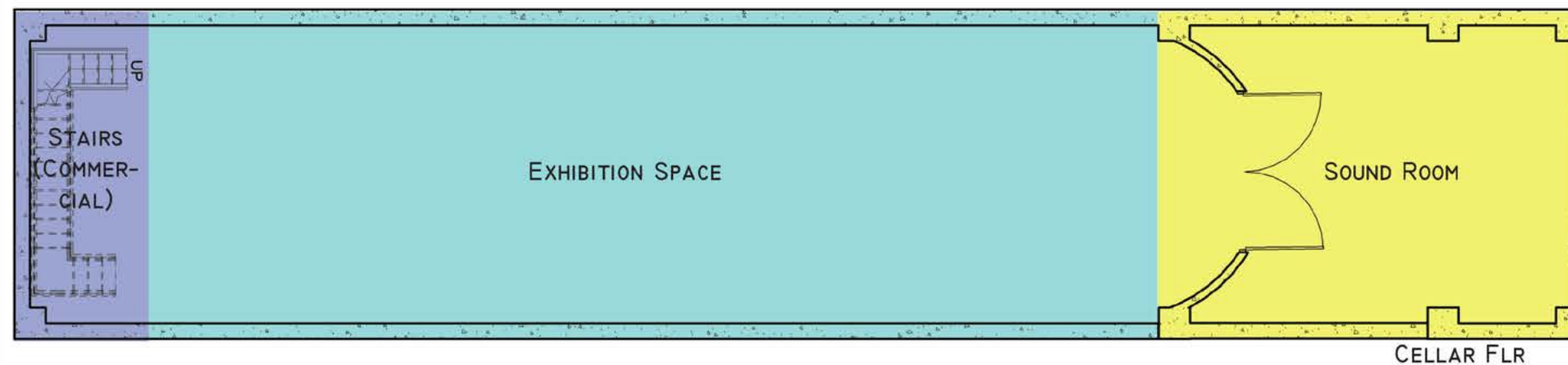
# 37 LAFAYETTE AVENUE, BROOKLYN, NY 11217



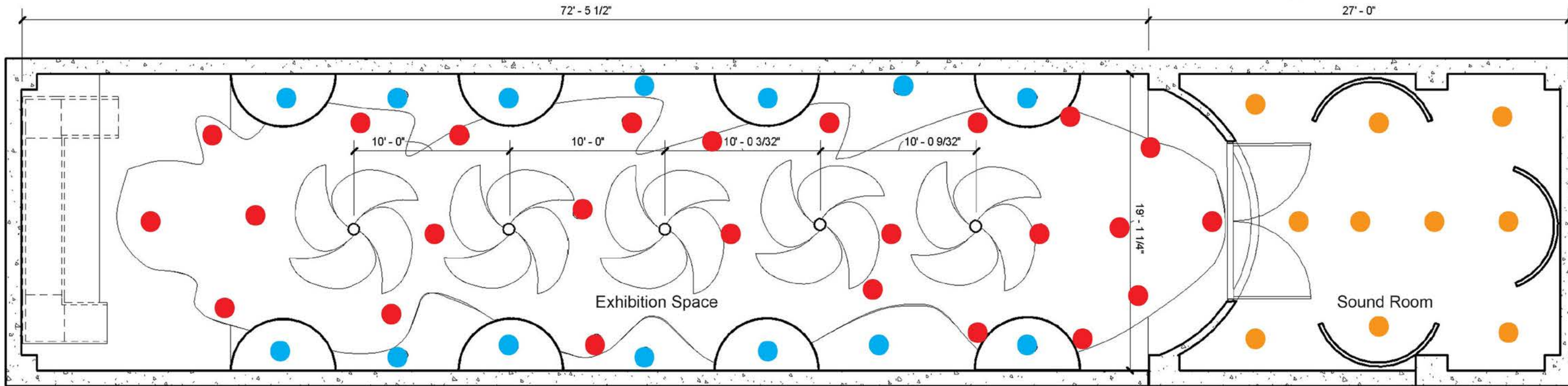
German Engineering

DIAGRAM LAYOUT

PROGRAM SPACES	PROPOSED SQ.FT	LEVEL
-ENTRANCE (COMMERCIAL)	-0 SQ.FT	-FIRST FLOOR
-ENTRANCE (RESIDENTIAL)	-0 SQ.FT	-FIRST FLOOR
-OFFICE SPACE	-1,500 SQ.FT	-SECOND FLOOR
-LOUNGE AREA	-325 SQ.FT	-SECOND FLOOR
-RESTROOMS	-180 SQ.FT	-FIRST FLOOR
-MAIN EXHIBITION SPACE	-1,800 SQ.FT	-FIRST FLOOR
-EXHIBITION SPACE	-1,400 SQ.FT	-CELLAR FLOOR
-SOUND ROOM	-600 SQ.FT	-CELLAR FLOOR
-STAIRCASE (COMMERCIAL)	-160 SQ.FT	-CELLAR/FIRST/SECOND
-STAIRCASE (RESIDENTIAL)	-170 SQ.FT	-CELLAR/FIRST/SECOND



## COMMERCIAL PROJECT - PROGRAM & LAYOUT






CELLAR FLOOR PLAN

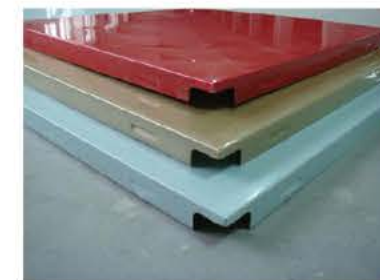
## FIXTURES



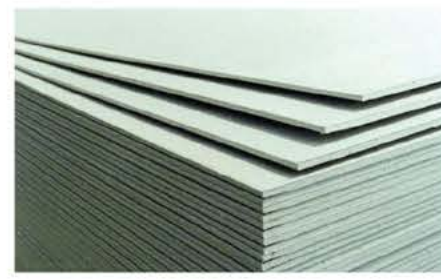
## LEGEND

-  TOPLITE I25 ADJUSTABLE DOWNLIGHT (DL-01)
-  ISOLA IP20 ADJUSTABLE DOWNLIGHT 20 BEAM LOW ENERGY 70W WHITE (DL-02)
-  6" HORIZONTAL ANTIFOG RECESSED DOWNLIGHT (DL-03)

## MATERIALS

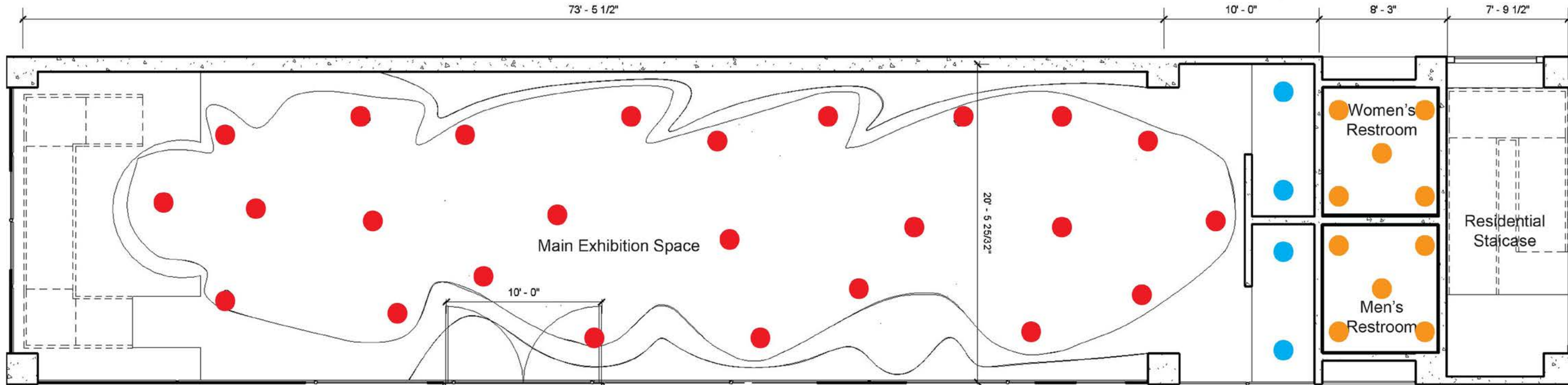


ALM-02



DW-02








FIRST FLOOR PLAN

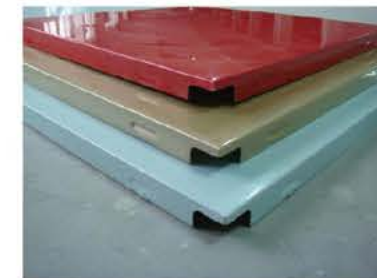
## FIXTURES



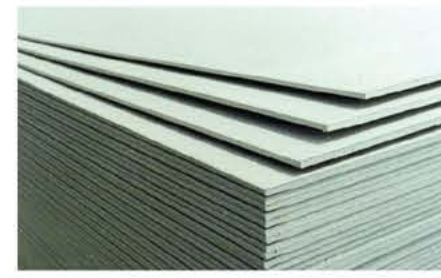
## LEGEND

-  TOPLITE I25 ADJUSTABLE DOWNLIGHT (DL-01)
-  ISOLA IP20 ADJUSTABLE DOWNLIGHT 20 BEAM LOW ENERGY 70W WHITE (DL-02)
-  6" HORIZONTAL ANTIFOG RECESSED DOWNLIGHT (DL-03)

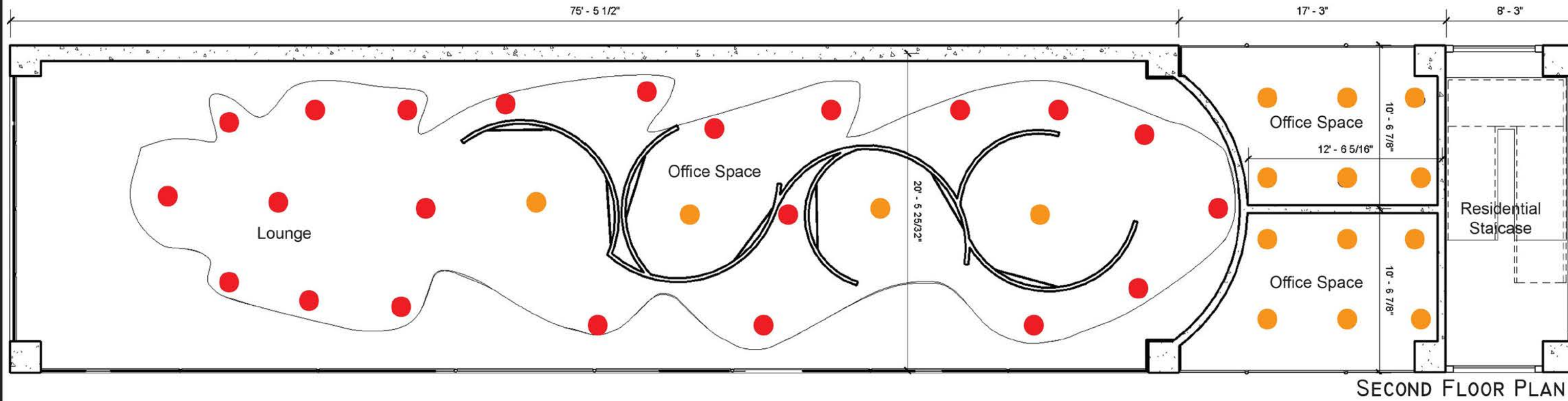
## MATERIALS



ALM-02






DW-02



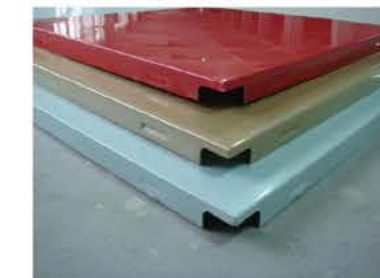
## FIXTURES



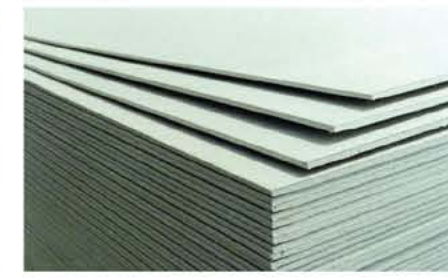
## LEGEND

-  TOPLITE I25 ADJUSTABLE DOWNLIGHT (DL-01)
-  ISOLA IP20 ADJUSTABLE DOWNLIGHT 20 BEAM LOW ENERGY 70W WHITE (DL-02)
-  6" HORIZONTAL ANTIFOG RECESSED DOWNLIGHT (DL-03)

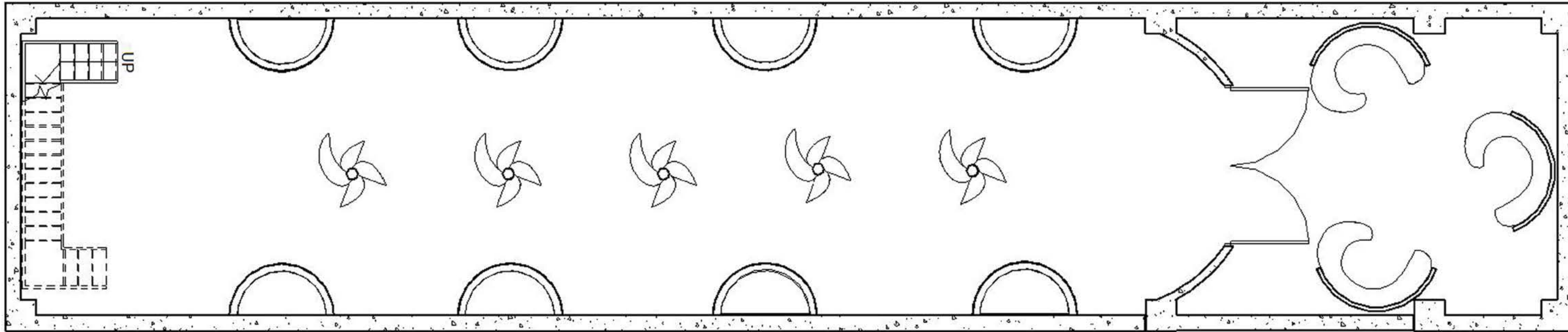
## MATERIALS



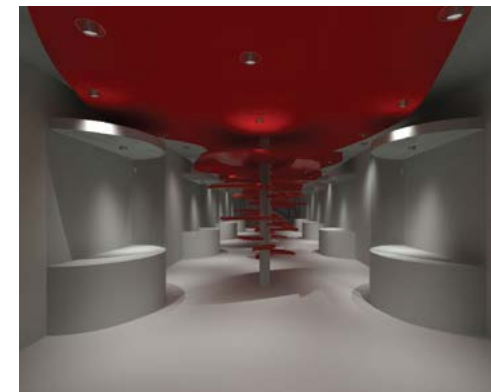
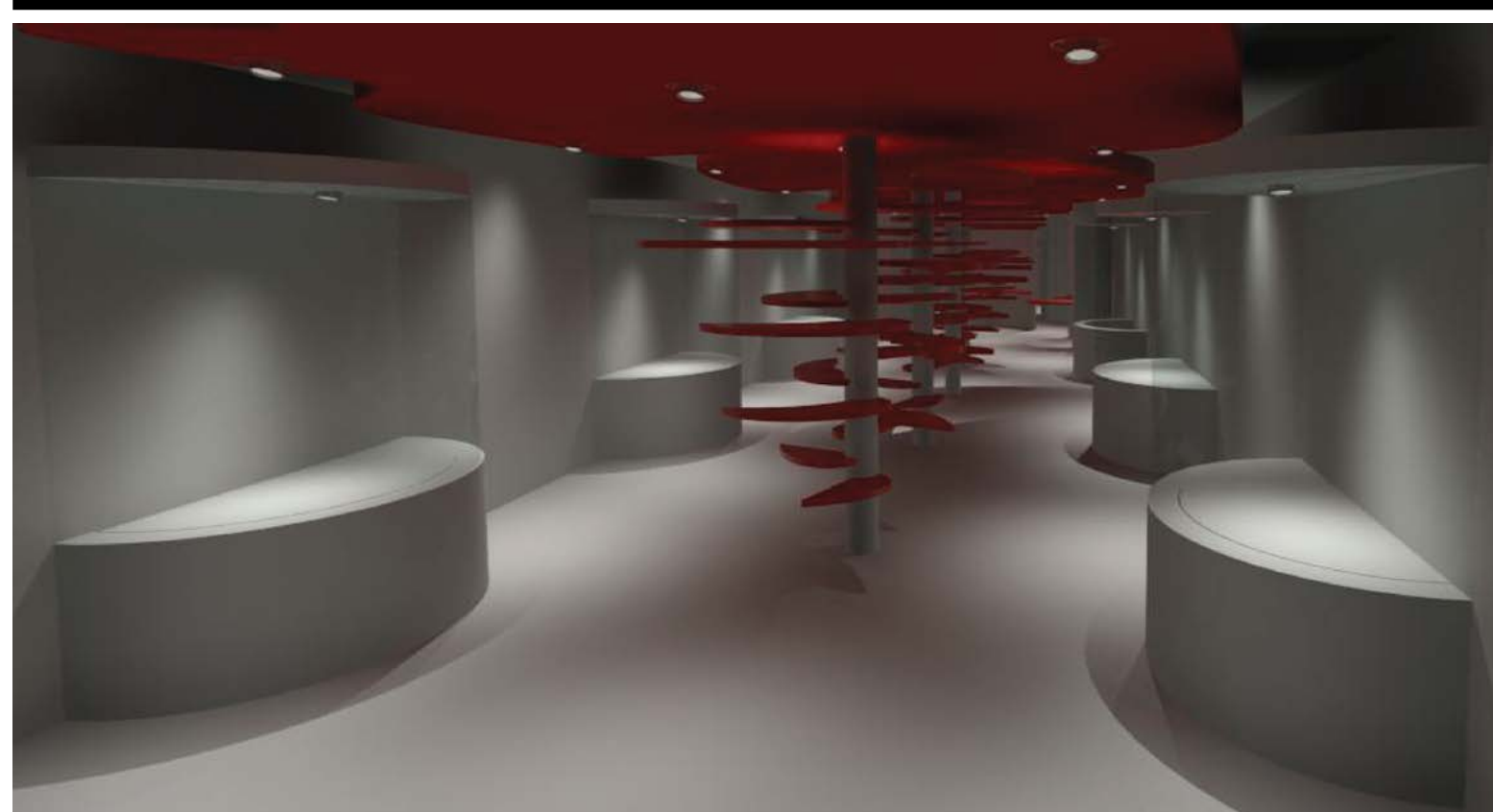
ALM-02



DW-02



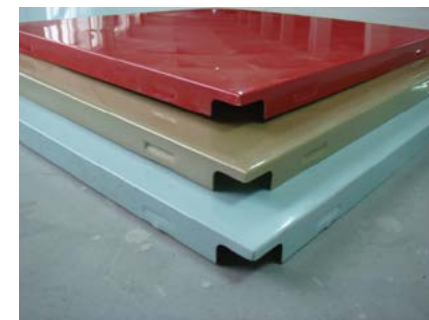
CELLAR FLOOR PLAN



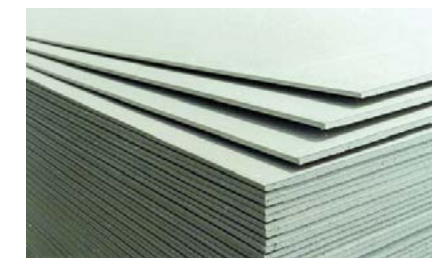
## MATERIAL



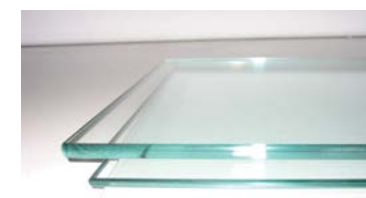
ALM-01



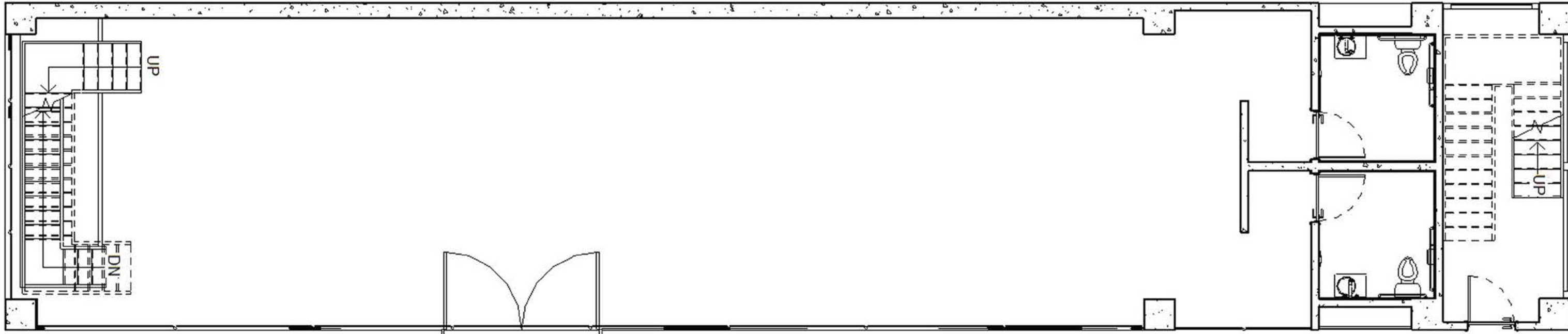
ALM-02



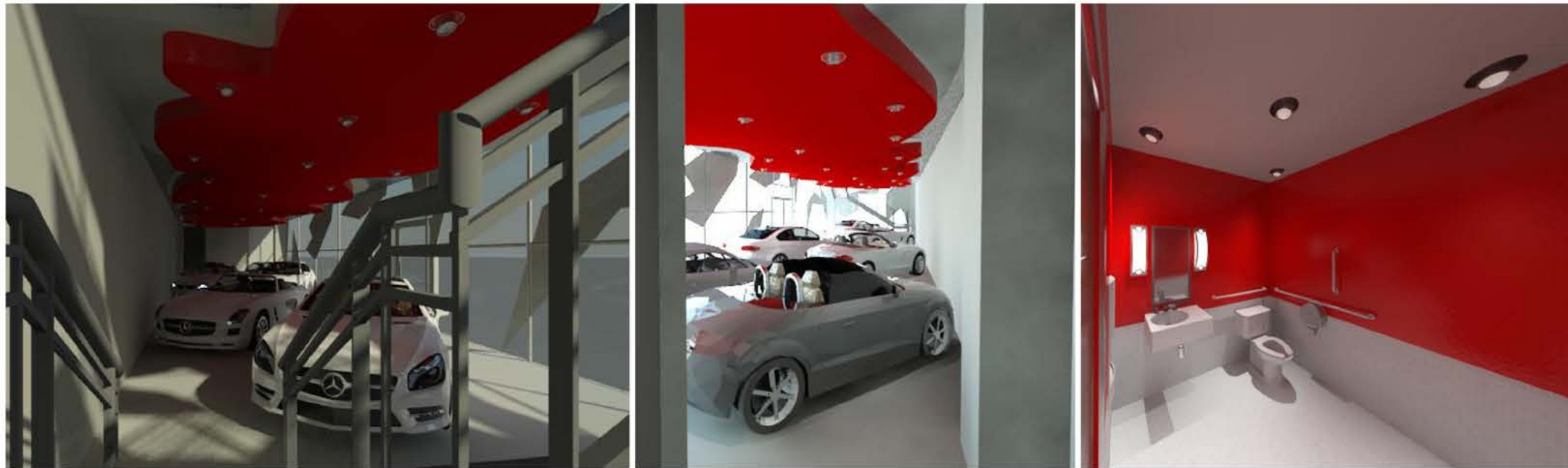
DW-02



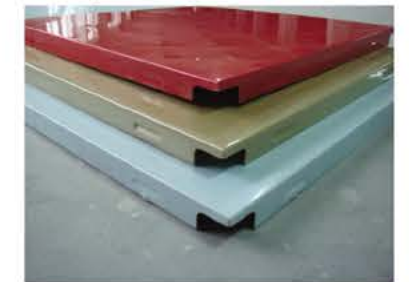
TG-01



FIRST FLOOR PLAN



## MATERIAL



ALM-02



DW-02



TG-01



ALM-05/TG-01



TG-03

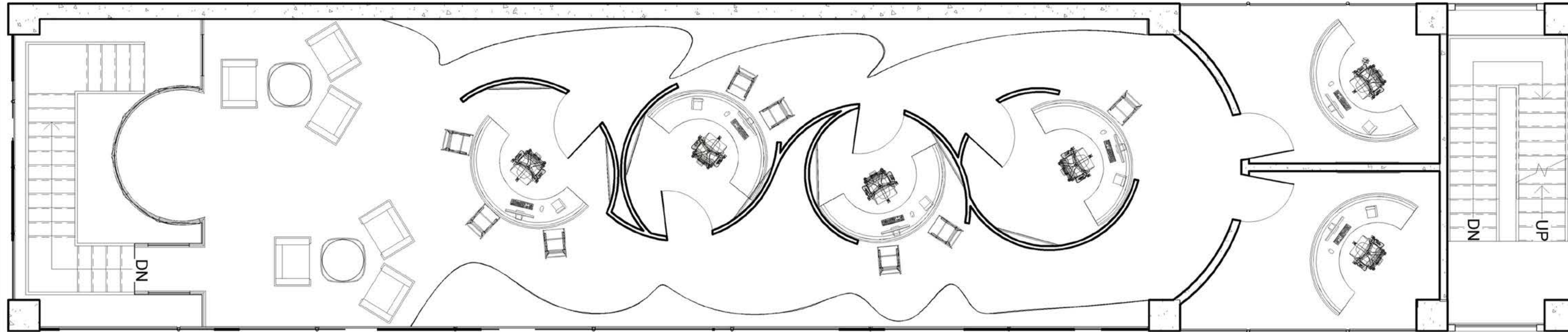


SLIDING GLASS DOORS

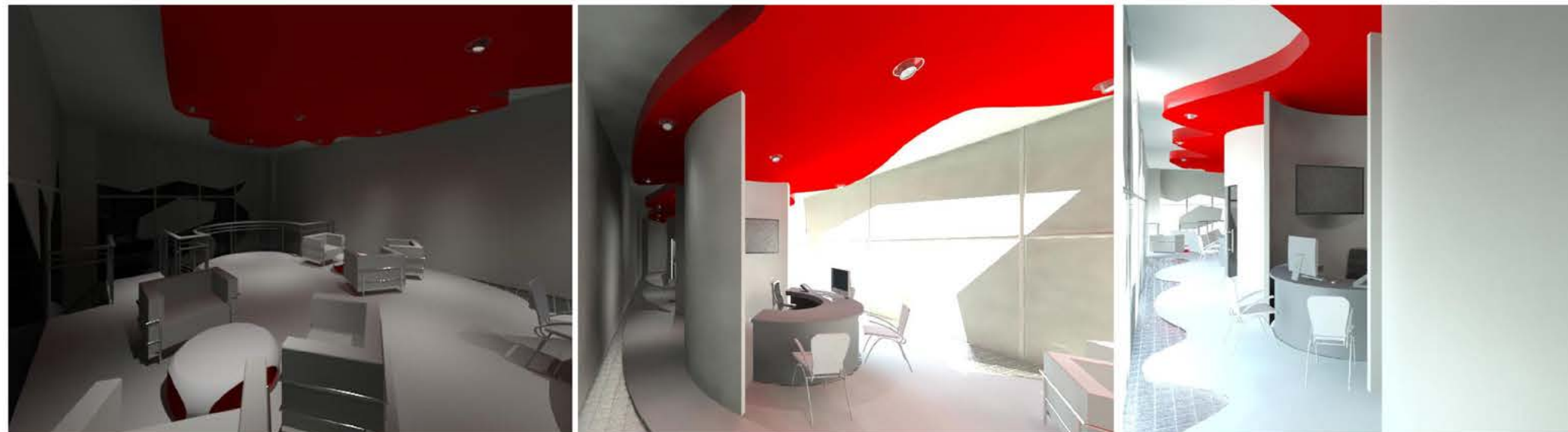
GCW-01

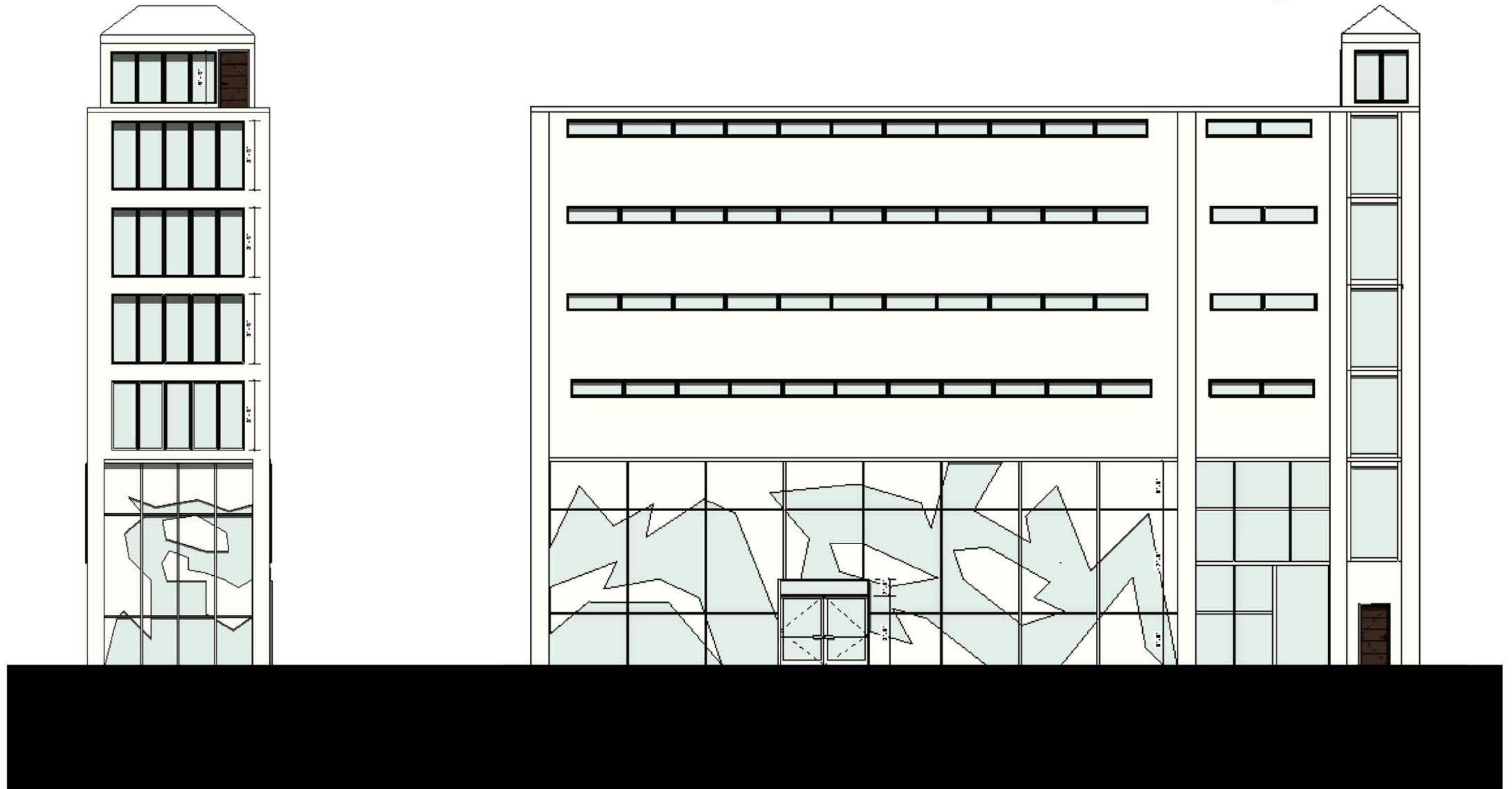


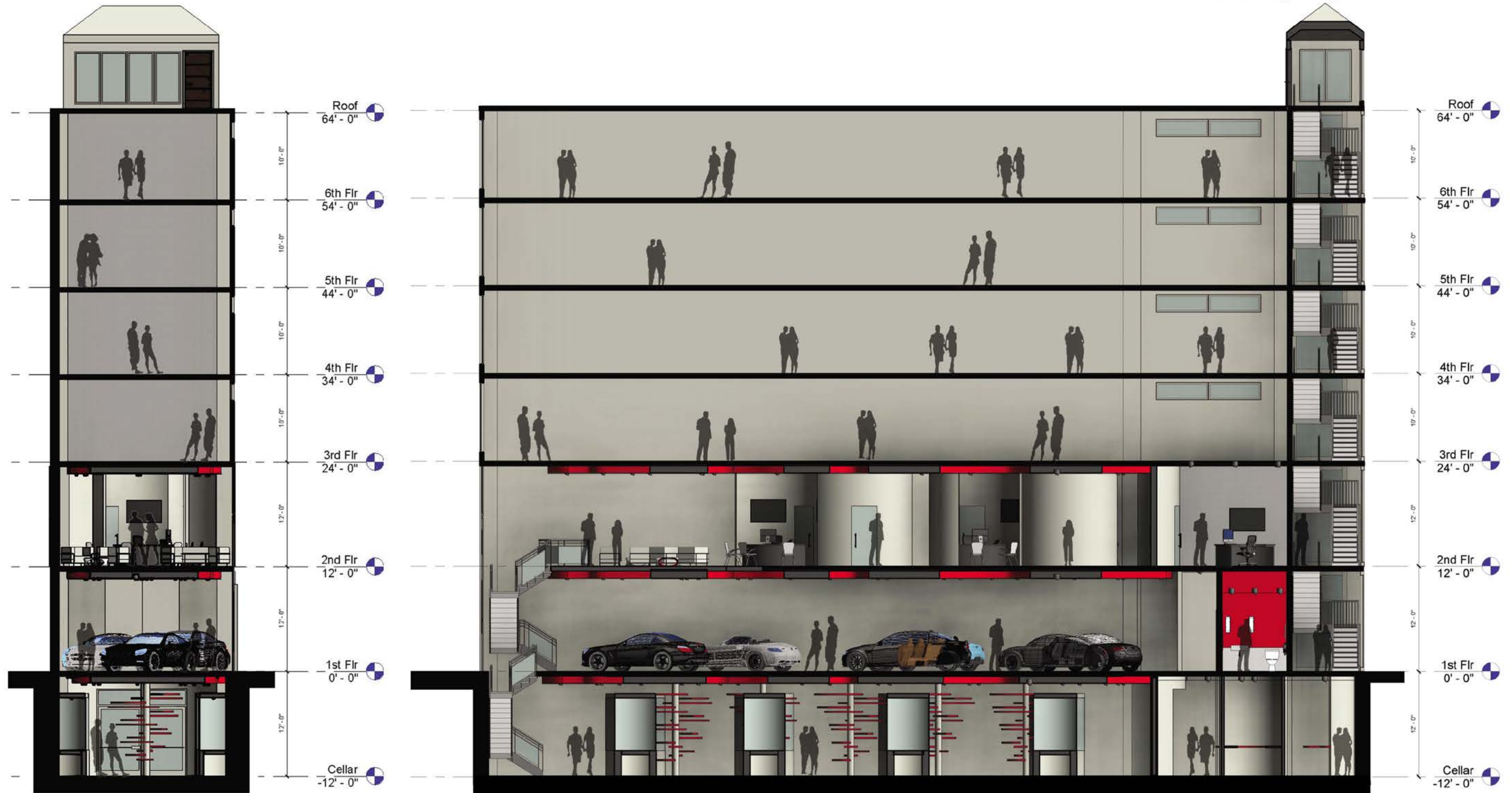
German Engineering



## SECOND FLOOR PLAN



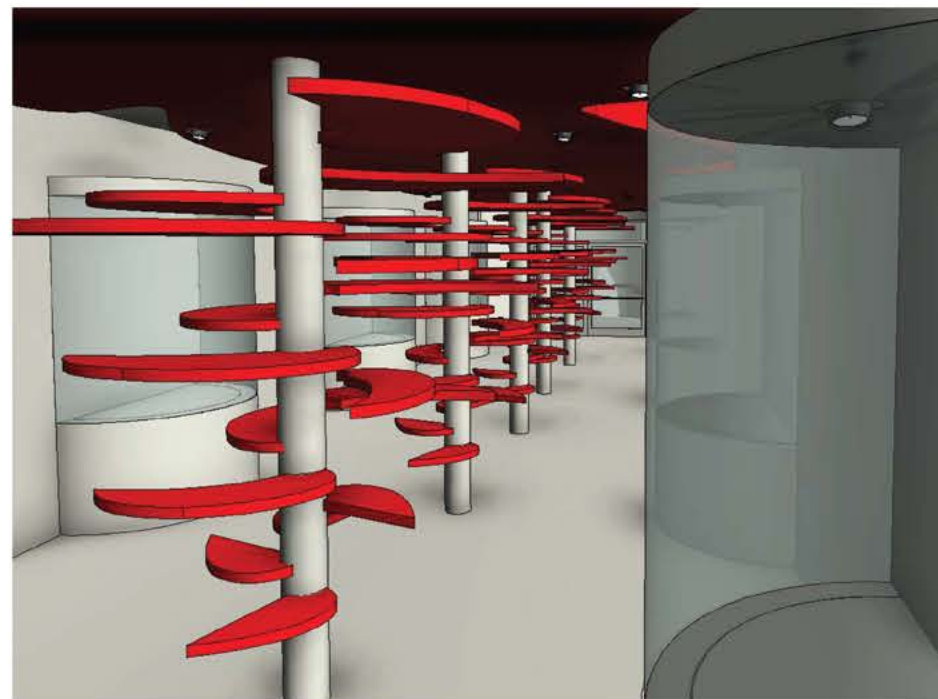
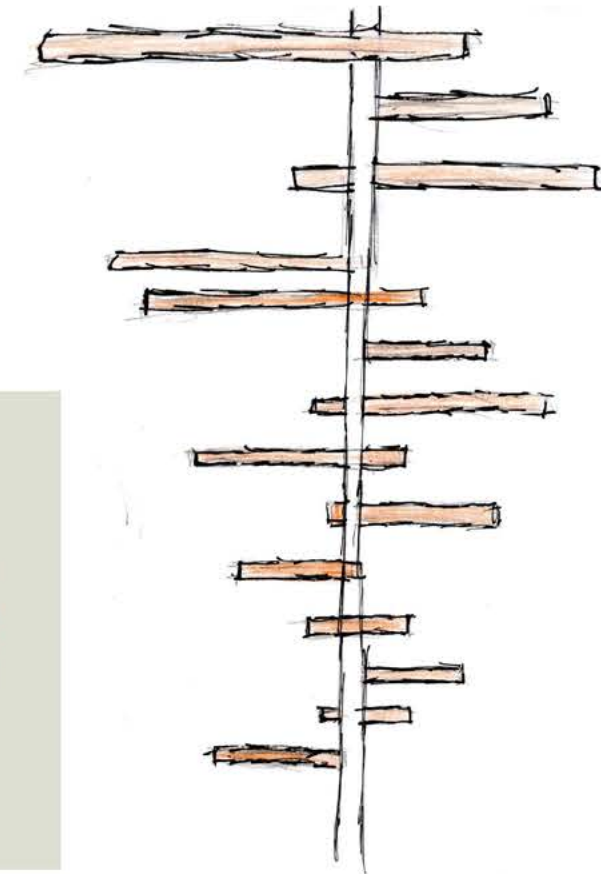
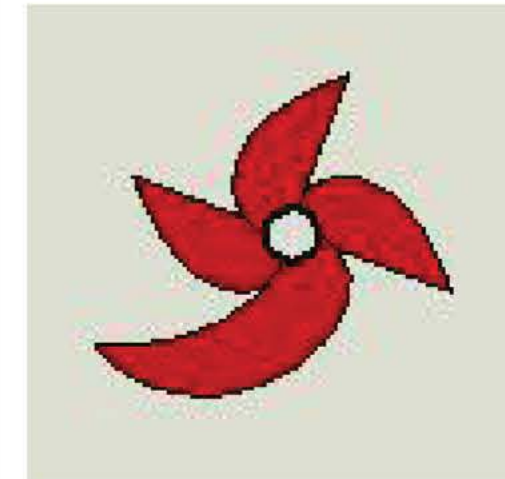




# GERMAN ENGINEERING



German Engineering



FOR MY DISPLAY CONCEPT, I USED A SINGLE COLUMN AND CREATED CURVES THAT ACT AS SHELVES, RESPECTIVELY. THESE SHELVES ARE OPEN TO THE PUBLIC AND FEATURES MANY MATERIAL THAT SPEAK OF GERMAN ENGINEERING. THESE SHELVES MAINLY CONTAIN VISUAL COMPONENTS SUCH AS CATALOGS, MAGAZINES, AND SPECIFICATIONS. IN THE TOP VIEW OF MY DISPLAY CONCEPT, IT RESEMBLES A FLOWER AND ITS PETALS, BUT IN A ELEVATION VIEW IT REPRESENTS CURVES INCREASING IN SIZE THE HIGHER IT REACHES THE PLANE. ON THE SECOND FLOOR, I USED MY STORE CONCEPT AND CREATED SPACES THAT ACT AS PRIVATE OFFICES WHERE CAR SALESMEN REPRESENTATIVES AND CUSTOMERS CAN INTERACT.



# GERMAN ENGINEERING



German Engineering

## MATERIALS



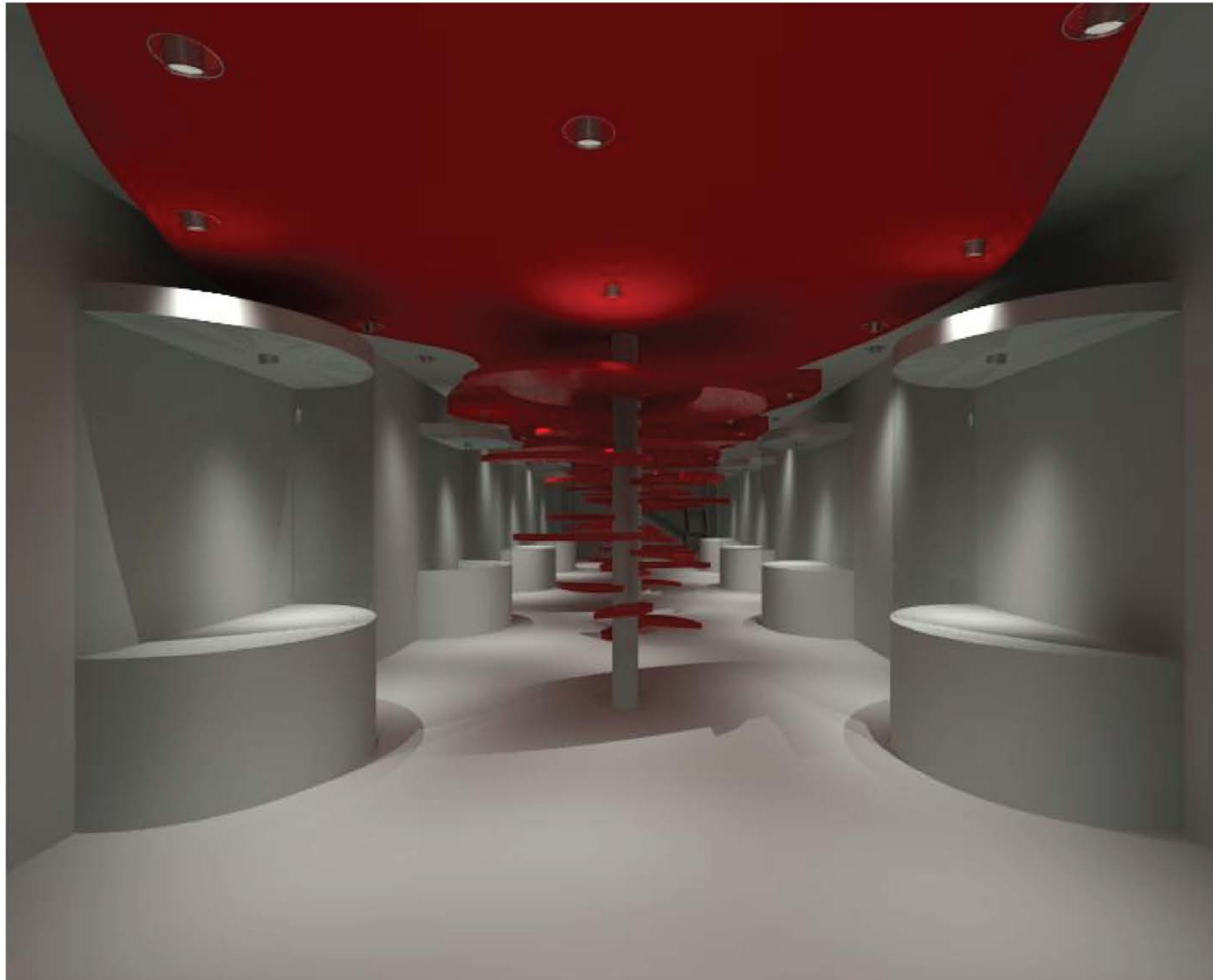
RED ALUMINUM SHELVES



TEMPERED GLASS FOR DISPLAY CASES



LED DOWNLIGHT



## EXHIBITION OF CAR PARTS AND MERCHANDISE

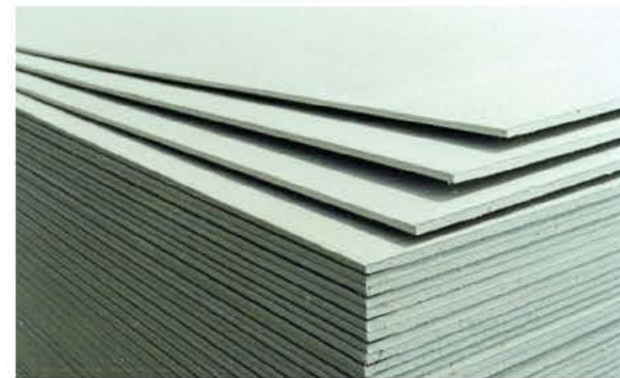


# GERMAN ENGINEERING



MATERIAL CODE	MATERIAL	LOCATION USE	MANUFACTURER
WG-01	WHITE GLASS MOSAIC TILE	MEN'S BATHROOM	MOSAIC TILE DIRECT
WG-02	---	WOMEN'S BATHROOM	---
GCW-01	GLASS CURTAIN WALL	EXTERIOR FACADE	VISTA ARCHITECTURAL PRODUCTS, INC.
DW-01	DRYWALL	CELLAR-2ND FLOOR	KAMCO SUPPLY CORP NY
DW-02	---	INTERIOR WALL	
ALM-01	ALUMINUM SHELVES W/ RED FINISH	CELLAR FLOOR	NORTHCLAD® RAINSCREEN SOLUTIONS
ALM-02	ALUMINUM MULLIONS W/ WHITE FINISH	EXTERIOR FACADE	
ALM-03	ALUMINUM SHEETS W/ WHITE FINISH	EXTERIOR FACADE	
ALM-04	ALUMINUM HAND RAILS	STAIRCASE/RAILING	
TG-01	TEMPERED GLASS	RAILING	© NYC GLASS WORKS CORP.
TG-02	---	DISPLAY CASE	
TG-03	---	GLASS FLOOR	

SLIDING GLASS DOORS





German Engineering

## FIXTURES/ACCESSORIES/LIGHTING/MATERIALS

- WSI-WALL SCNCE
- MCI-WHITE GLASS MOSAIC CERAMIC TILE
- SFI-SINK/FAUCET
- PDI-PAPER TOWEL DISPENSER
- TI-TOILET
- MI-MIRROR
- HRI-HANDICAP HANDRAIL
- PD2-TOILET PAPER DISPENSER



MCI



WSI



SFI



PDI



TI



M1

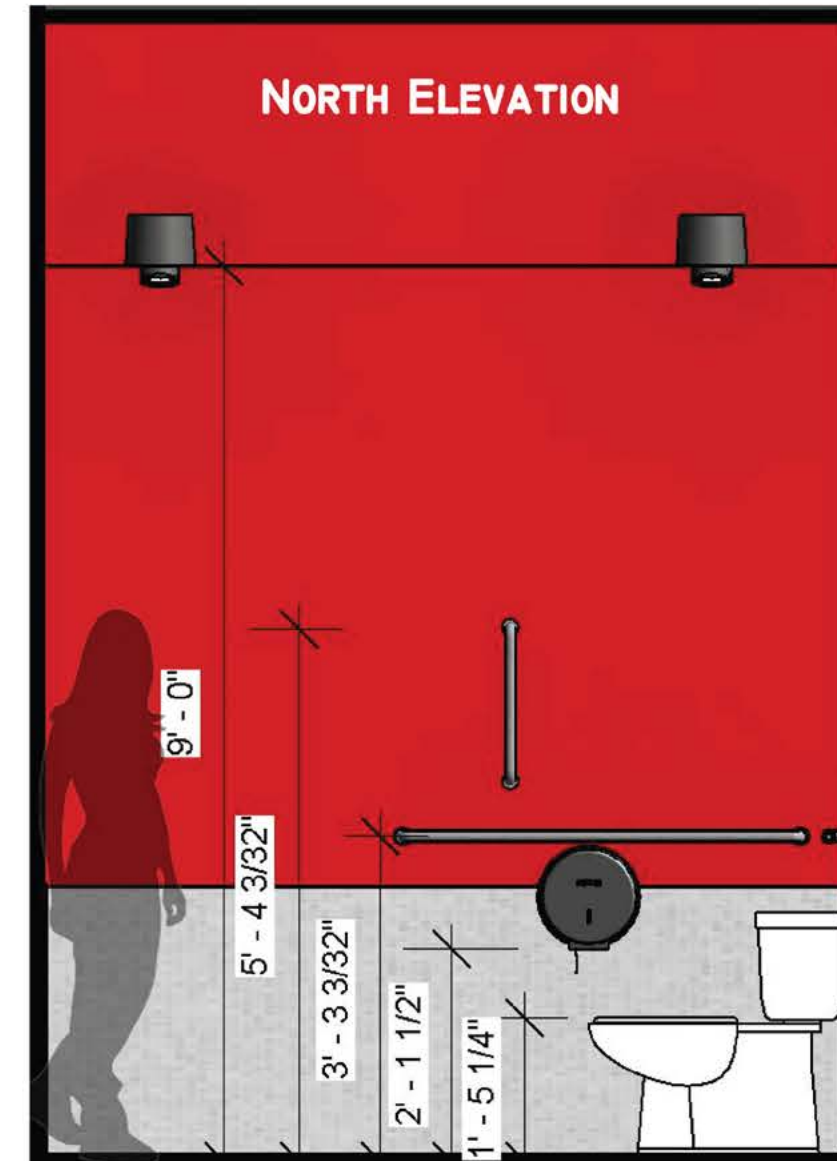
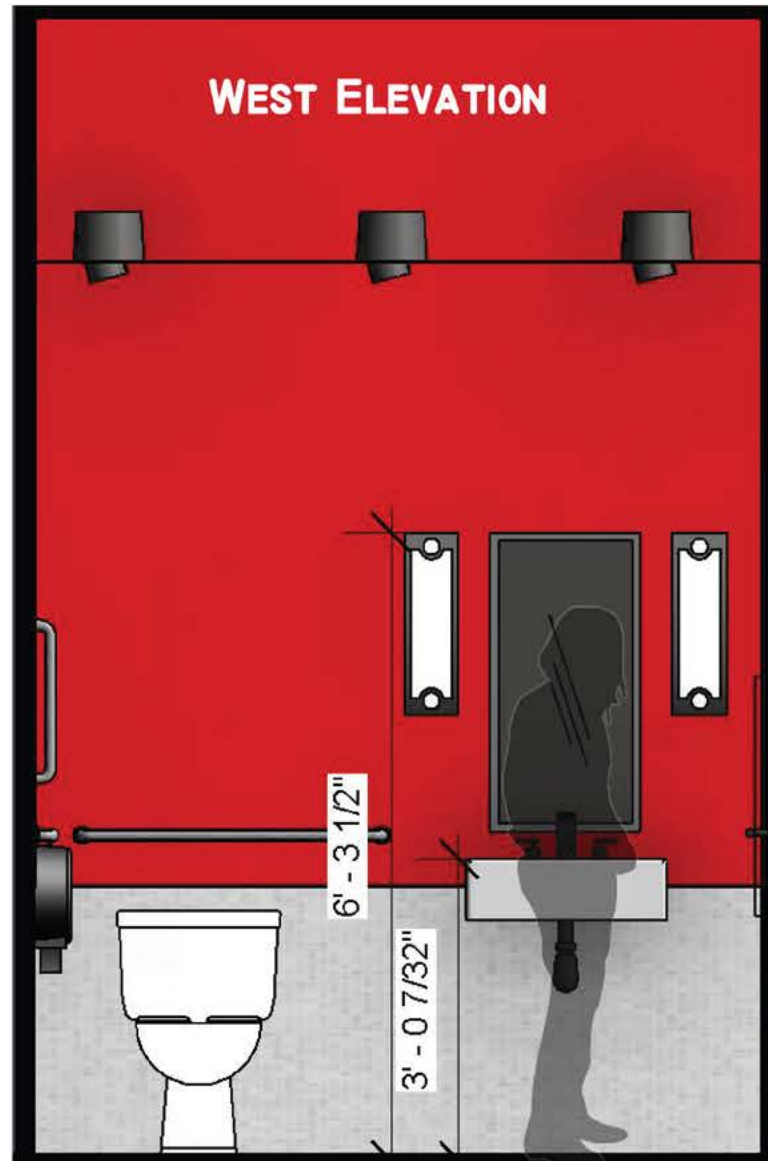
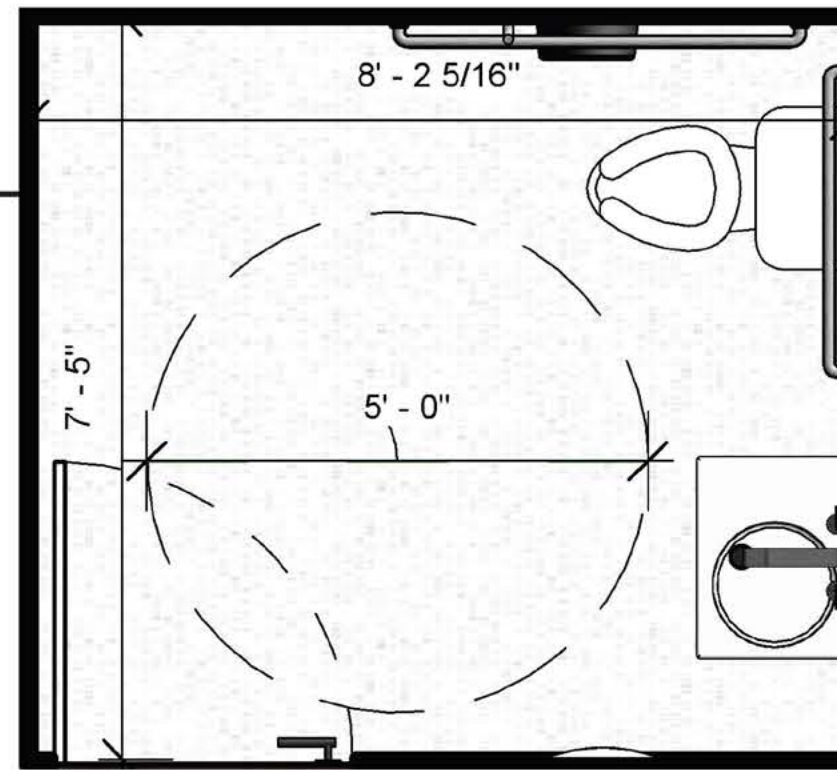


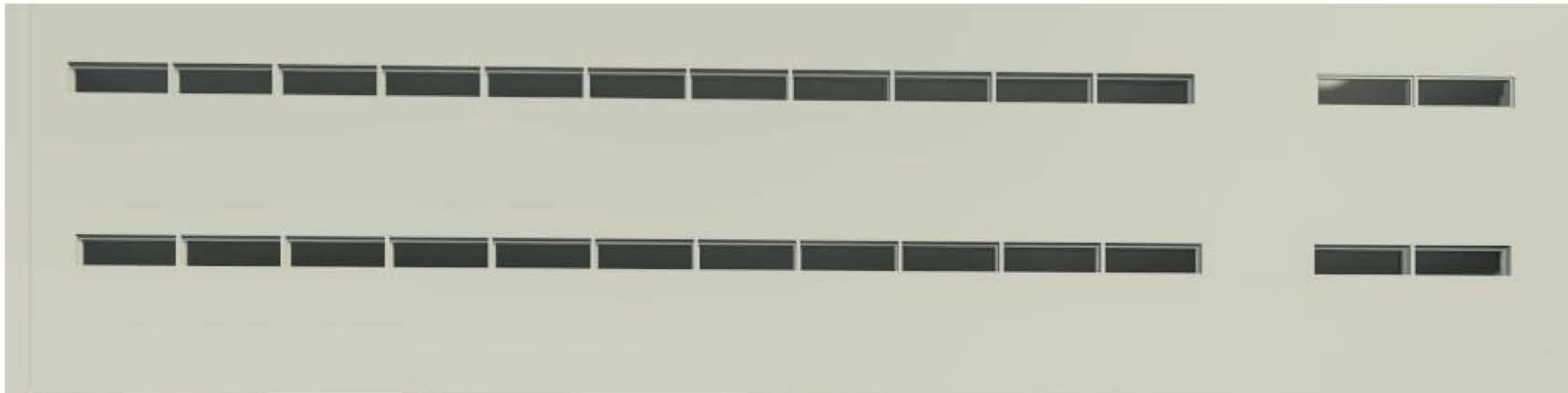
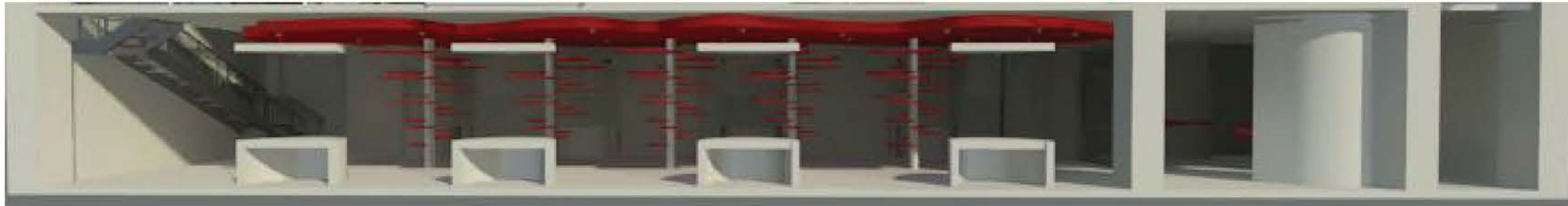
PD2



HRI

SCALE: 1/8" 1'-0"









---

---

German Engineering