

Single Family:

Architect: 35 year old husband, specializes in residential and renovation, personal business located in Brooklyn, NY.

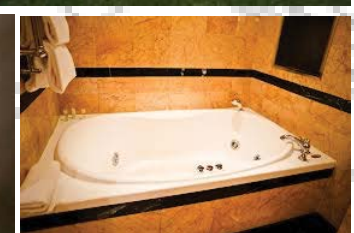
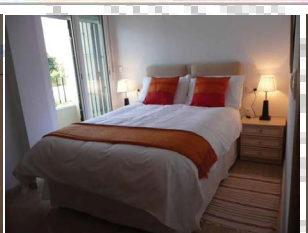
Candle Maker: 32 year old wife, works as a middle school teacher in a public school in Brooklyn, NY.

9 Year Old Girl: goes to private school and has parents who push her in her studies and in extracurricular activities.

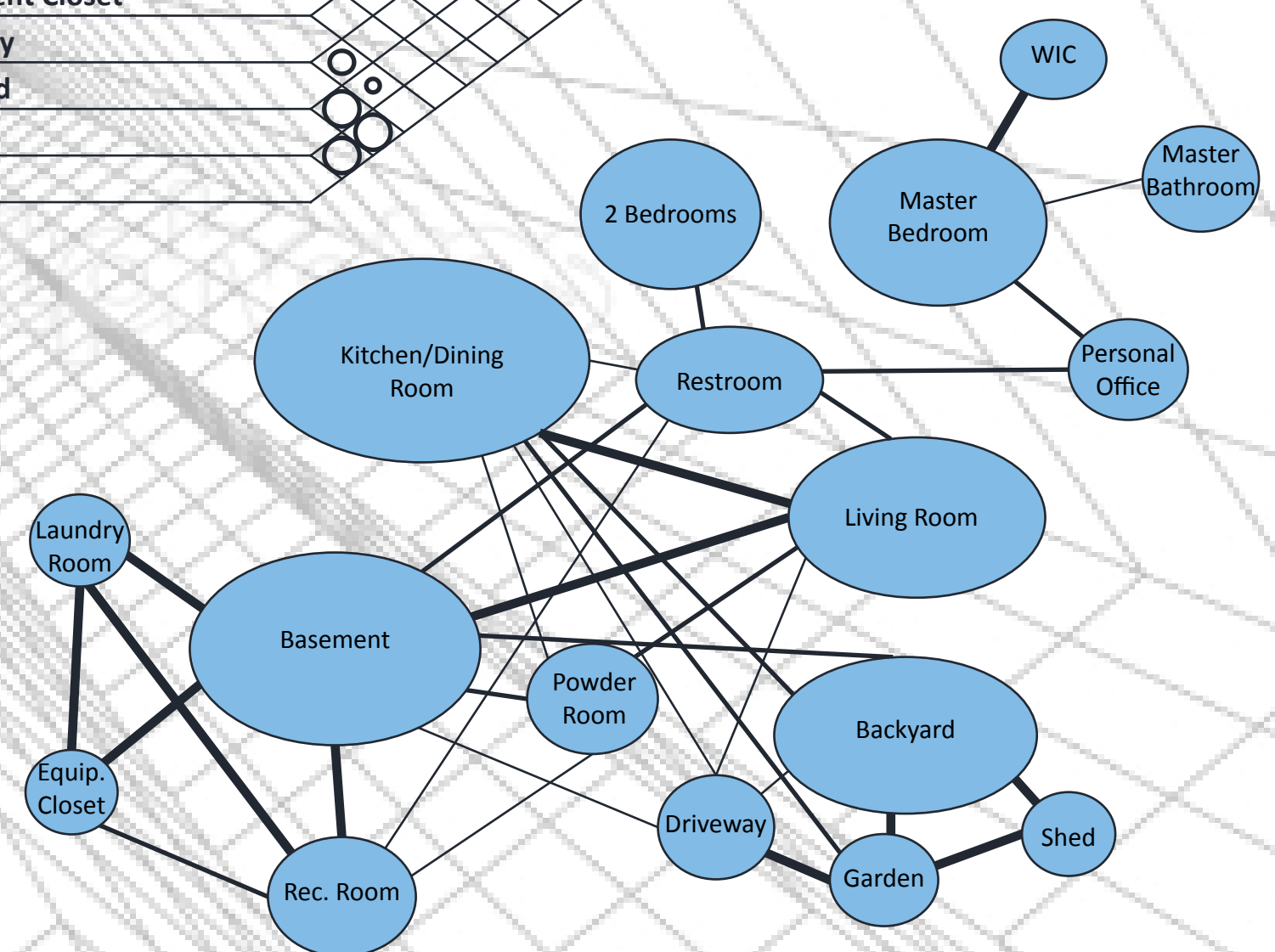
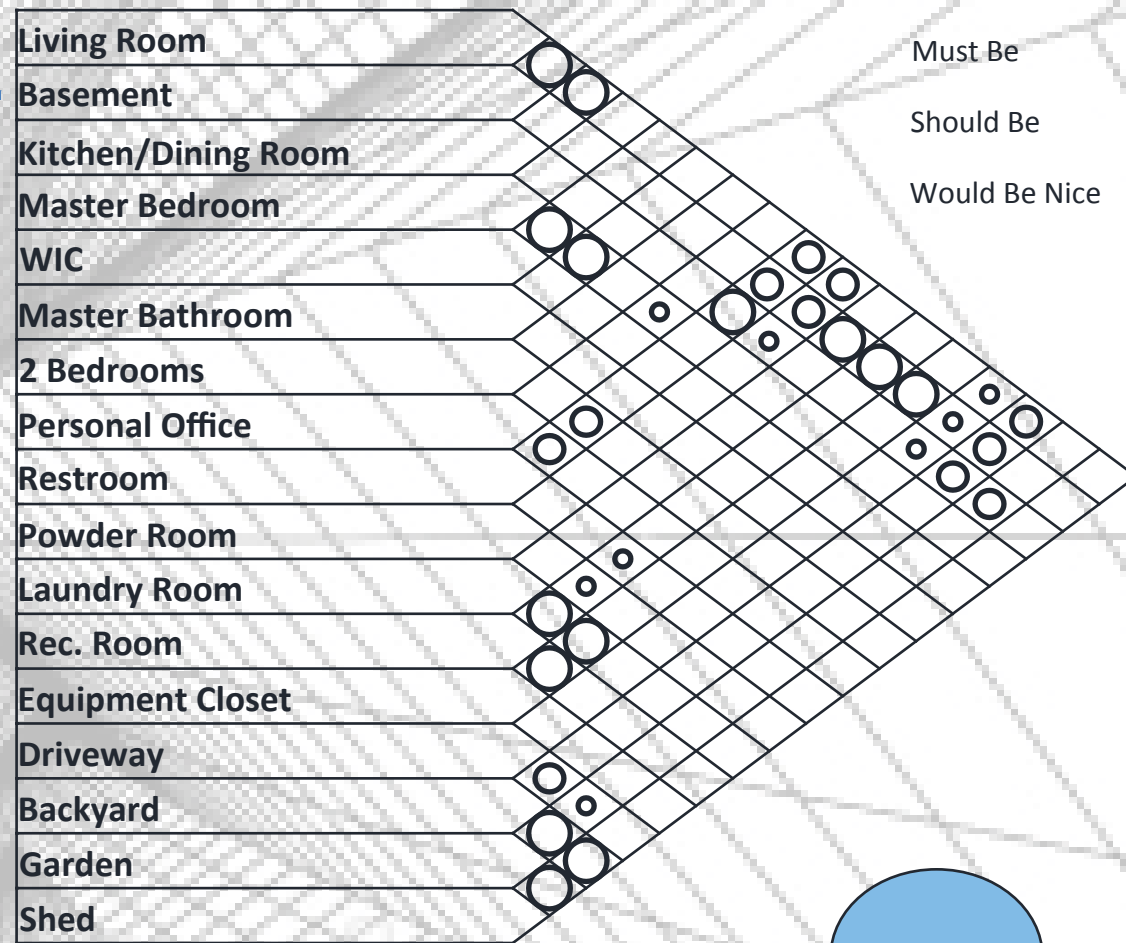
Moved to Brooklyn, NY for easier traveling. Originally lived in Upstate.

Needs:

- 2 story house with 1 basement, 2 floors, open backyard, and driveway
- One master bedroom with WIC, bathroom with jacuzzi, shower, two sinks, toilet, skylight and balcony.
- Wide windows for natural lighting, personal office space
- Recreational center in basement including dance studio, karaoke system, pool table, big screen TV, couch, etc.
- Open and spacious living rooms; double height living rooms being overlooked by second floor
- Kitchen connected to the living room

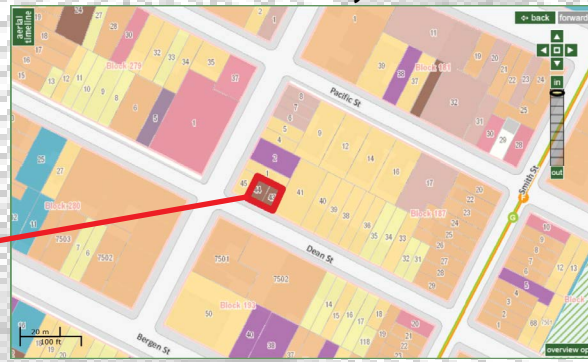


Programs	Activity in Space	Furniture	Furniture Size	Plumbing	Natural Lighting	Habitation
Living Room	Family Gathering	Couches	105"x129"			
	Family Time Relaxation	Coffee Table Television	24"x48"x16" 60"	Yes	Yes	All
Basement	Extracurricular Relaxation	Tables Television	24"x48"x16" 60"	Yes	Yes	All
		Couches	105"x129"			
Kitchen/Dining Room	Cooking & Eating	Refrigerator	36"x28"			
		Stove & Oven Sink & Counters	36"x36"x45" 42"x21"	Yes	Yes	All
Master Bedroom	Sleeping	King Size Bed	5'x6'-6"			
	Personal Space	Television Tables	48" 24"x48"x16"	Yes	Yes	Parents
WIC	Wardrobe	Shelves	30"x58"	No	No	Parents
	Shoes	Closet	112"x75"			
Master Bathroom	Relaxation	Jacuzzi	82"x79"			
	Cleaning	Shower Toilet Sink	36"x36" 28"x14" 20"x17"	Yes	Yes	Parents
2 Bedrooms	Sleeping	Twin Size Bed	38"x75"			
	Personal Space	Tables Shelves	20"x42"x16" 30"x58"	Yes	Yes	Child/Guest
Personal Office	Work Related	Tables	20"x42"x16"			
	Personal Space	Shelves Chairs	30"x58" 25"x35"	No	Yes	Father
Restroom	Cleaning	Shower	36"x36"			
		Toilet Sink	28"x14" 20"x17"	Yes	Yes	All
Powder Room	Cleaning	Toilet	28"x14"			
		Sink Mirror	20"x17" 24"x36"	Yes	No	All
Laundry Room	Wash & Dry	Washer	14"x12"x18"			
		Dryer Shelves	14"x12"x18" 30"x58"	Yes	Yes	All
Rec. Room	Game Room	Pool Table	8'x44"			
	Relaxation	Dance Studio	--	Yes	Yes	All
Equipment Closet	Maintenance	Mini-Bar	--			
		Boiler Electrical	-- --	Yes	No	Parents
Driveway	Parking Space	--	--	No	Yes	Parents
Backyard	Family Gathering	Grill	24"x16"			
	Relaxation Work Space	Tables Chairs	20"x42"x16" 24"x35"	Yes	Yes	All
Garden	Catering to Garden	--	--	No	Yes	Mother/Child
Shed	Work Space	Tables	24"x48"x16"	No	Yes	Mother/Child
		Shelves	30"x58"			

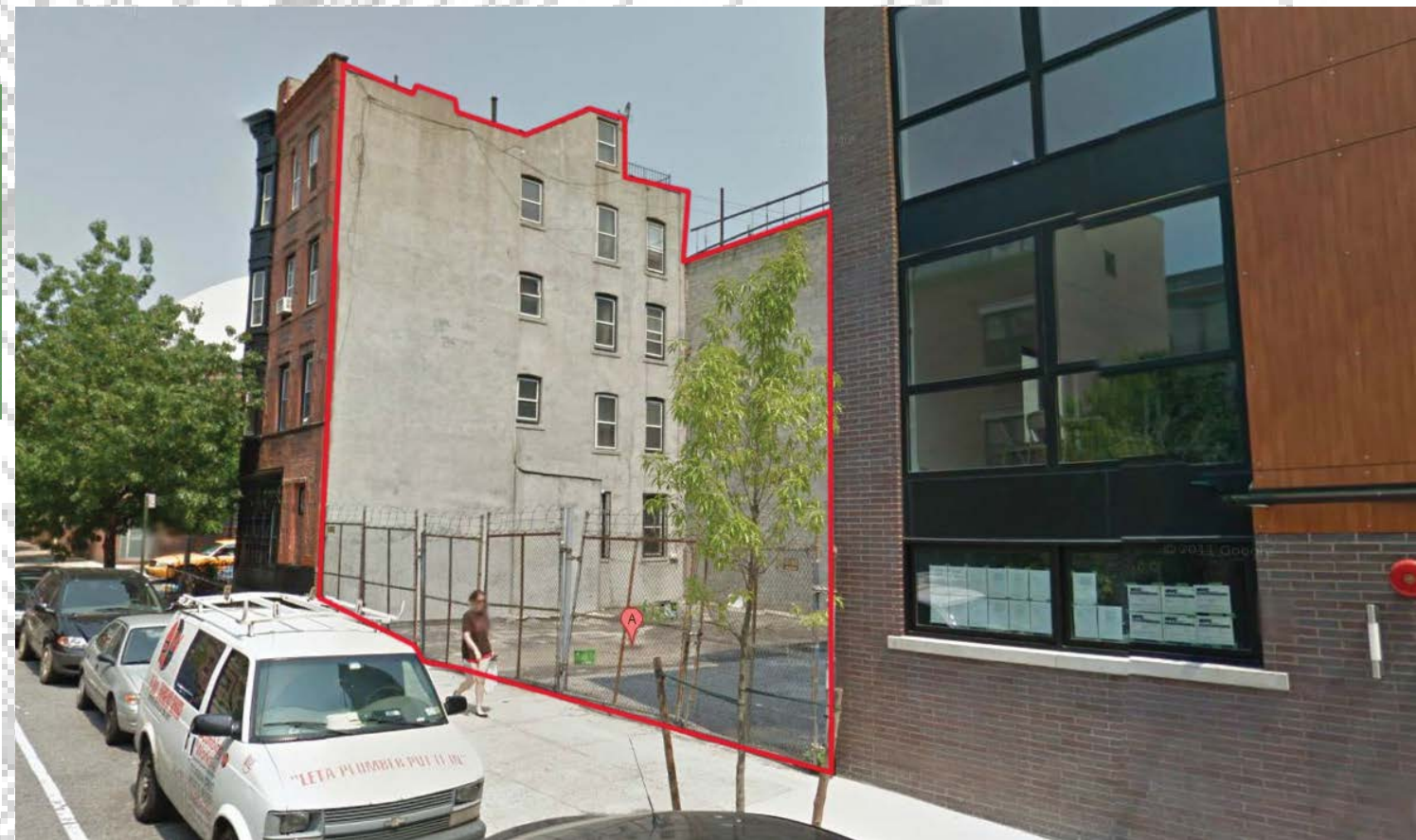


Location: 41-43 Dean St, Brooklyn, NY 11201

Neighborhood: Downtown Brooklyn
Boerum Hill: Mainly Residential



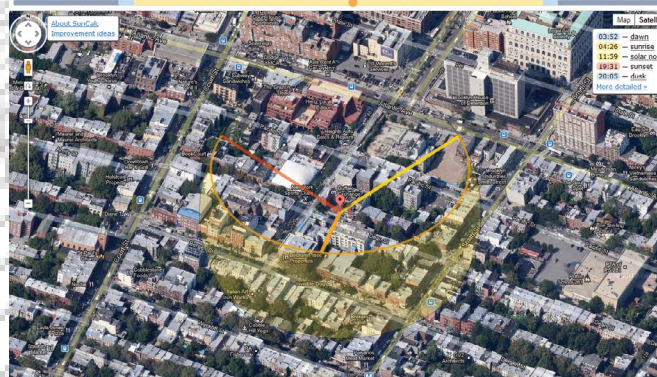
- 1 & 2 Family Residential
- Multi-family Residential
- Mixed Use
- Open space & outdoor recreation
- Commercial
- Institutions
- Industrial
- Parking
- Transportation / Utilities
- Vacant Lots



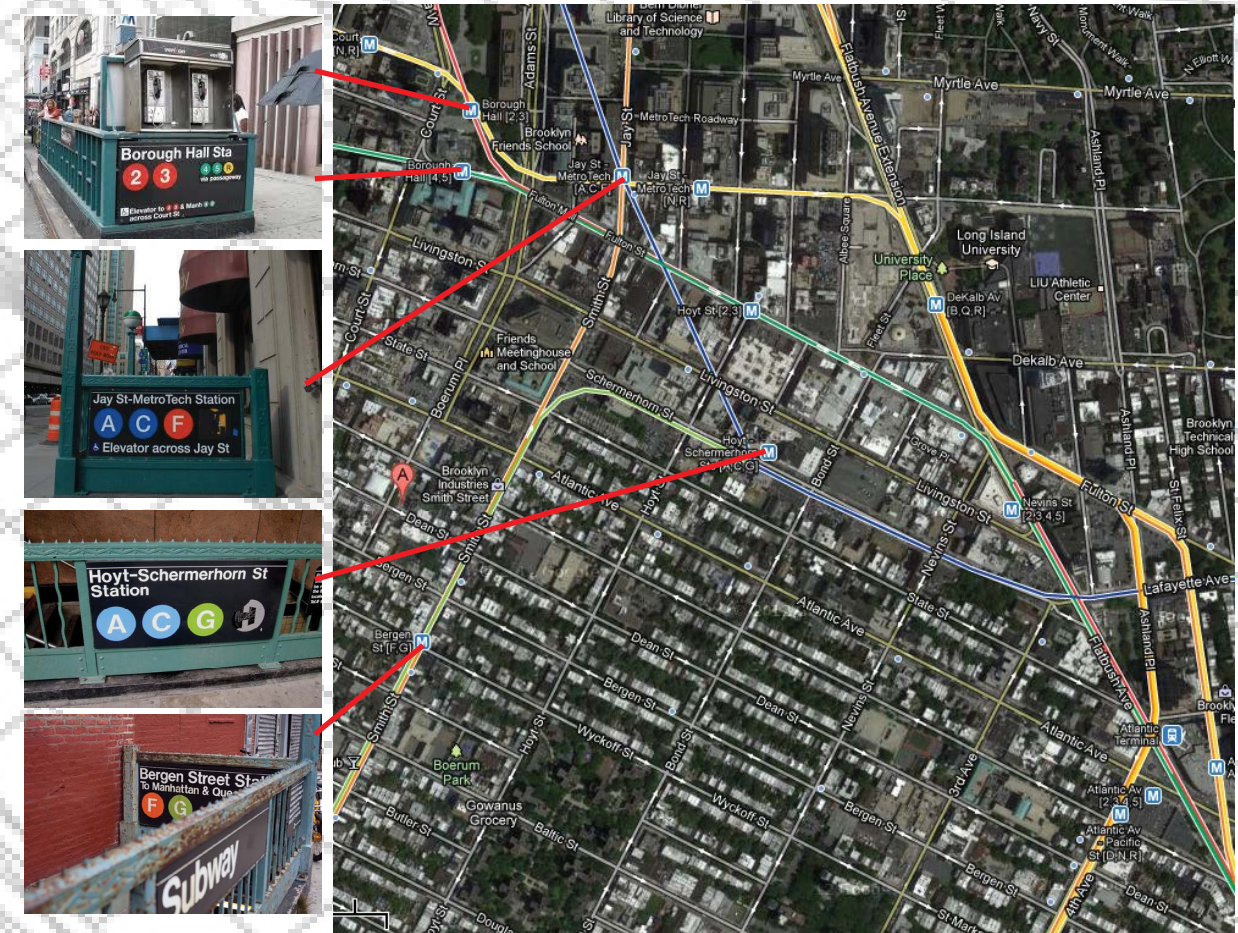
Generalities and Local Amenities



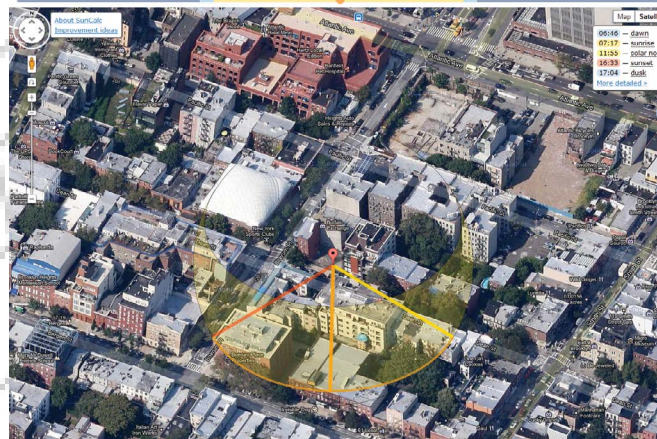
Sun Diagram: June 21st



Subways: Public Transportation MTA

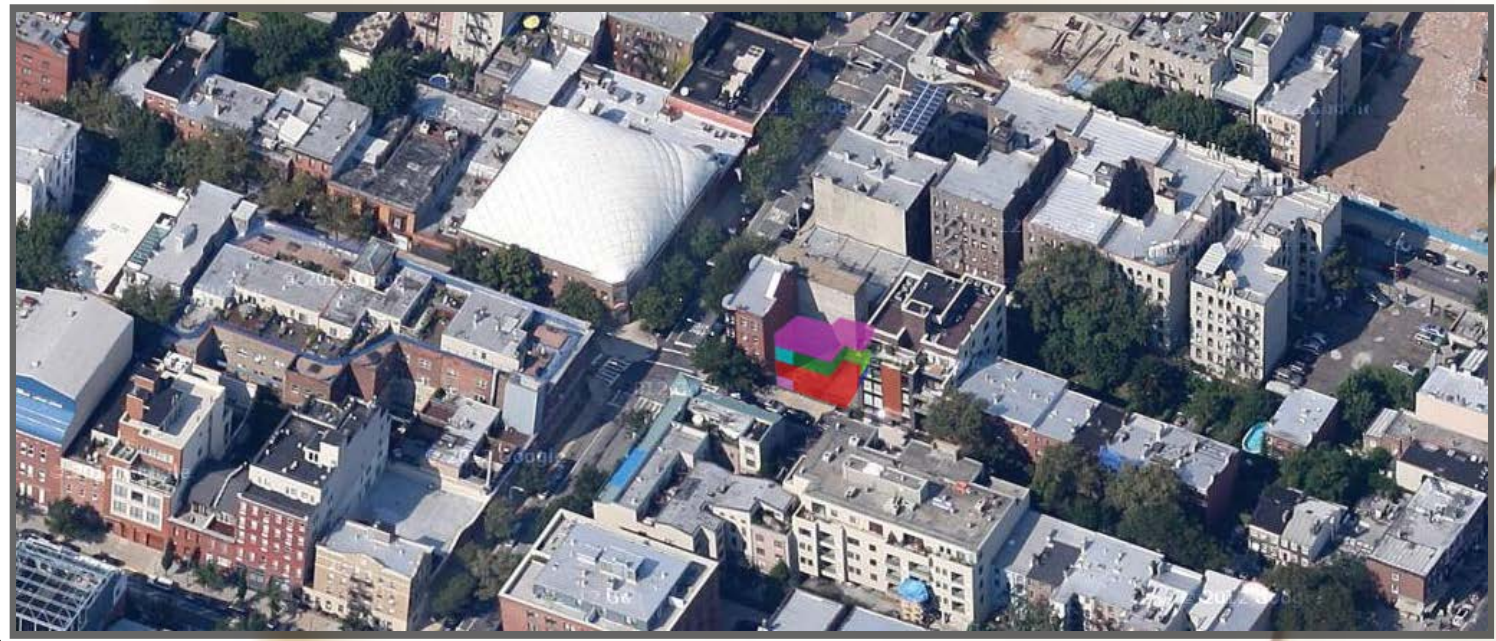
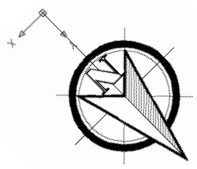


Sun Diagram: December 21st

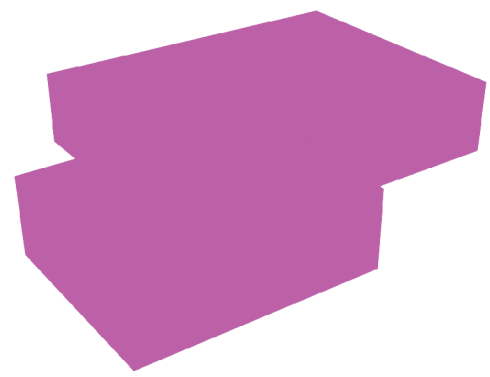


Address: 41-43 Dean Street
Brooklyn, NY 11201
Block: 187/ Lot: 43 and 44
Zoning: R6A FAR: 30
Property Area: 2,226 sq ft (53'x42')

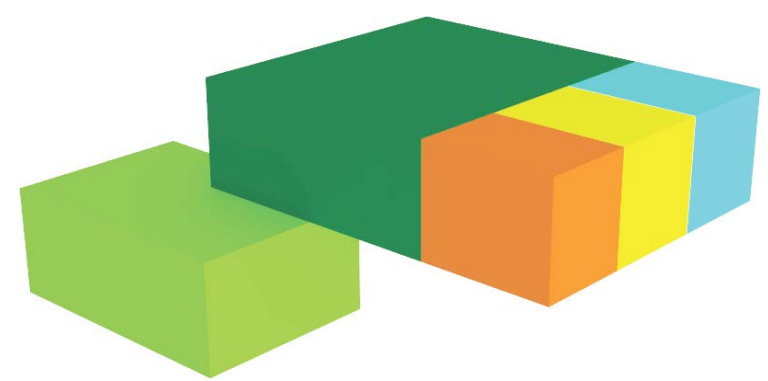
- Dean Street is located in a neighborhood consisting of 1 & 2 family residential and multi-family residential. This type of location suits my clients for they are conservative and care about privacy.
- Accessibility to public transportation is super convenient for the mother and father because their work site requires little transportation.
- Many local amenities such as sports clubs, parks, bars, bicycle shops, Fulton Mall and the Barclay's center are some of the places that make living in such an environment that much better. Seeing how they're many local amenities, it compliments the clients programs. Not only do they have to spend their time indoors at home, family activities and individual hobbies can be completed outside of their comfort zone.



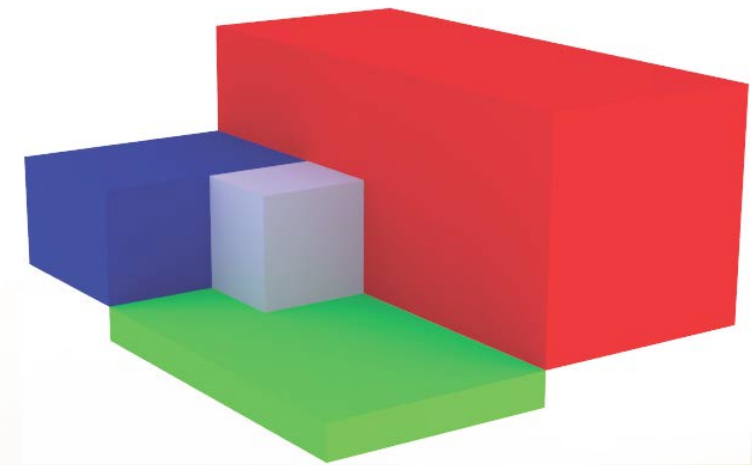
PERSPECTIVE VIEW



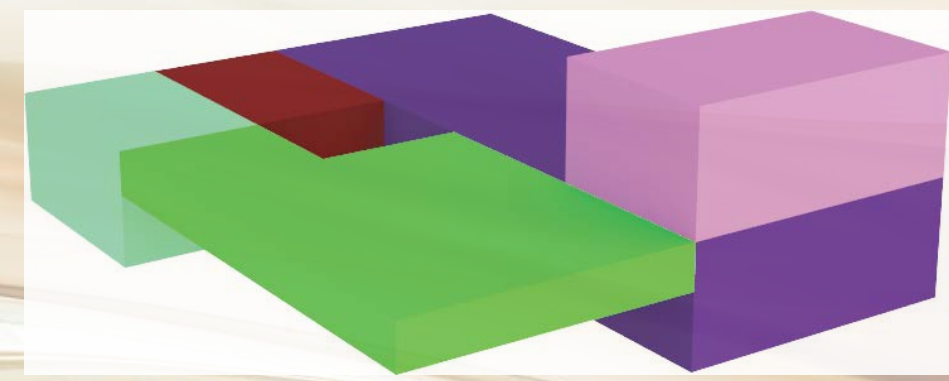
FOURTH FLOOR



SECOND & THIRD FLOOR

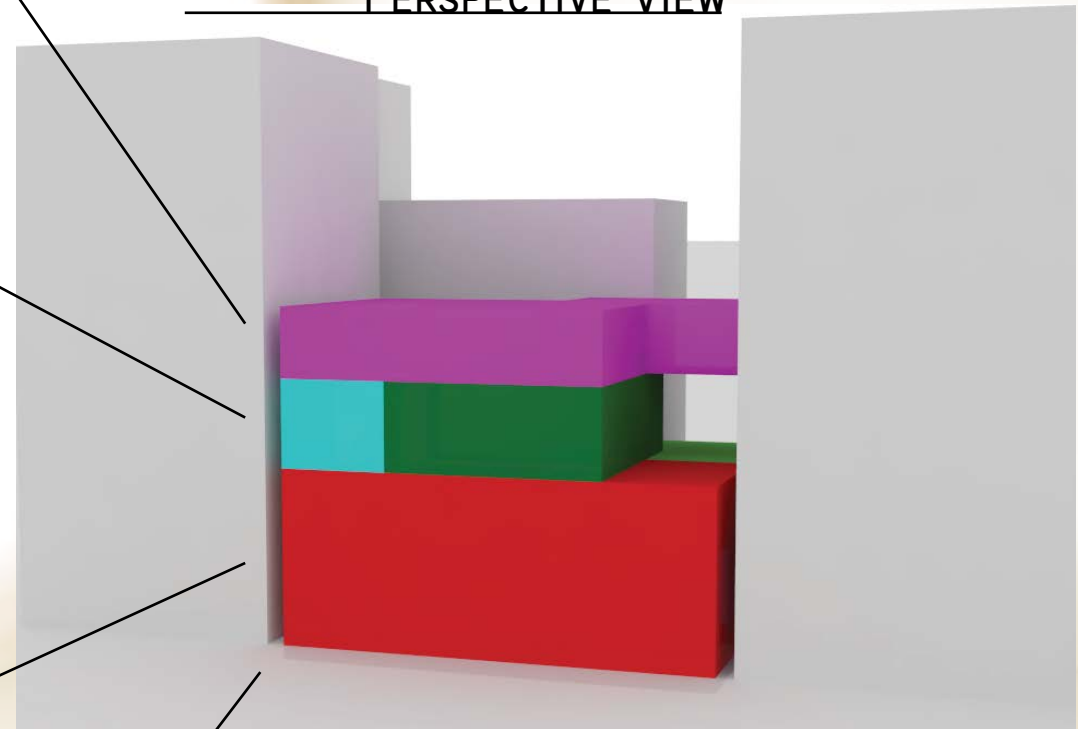


GROUND FLOOR/BACKYARD

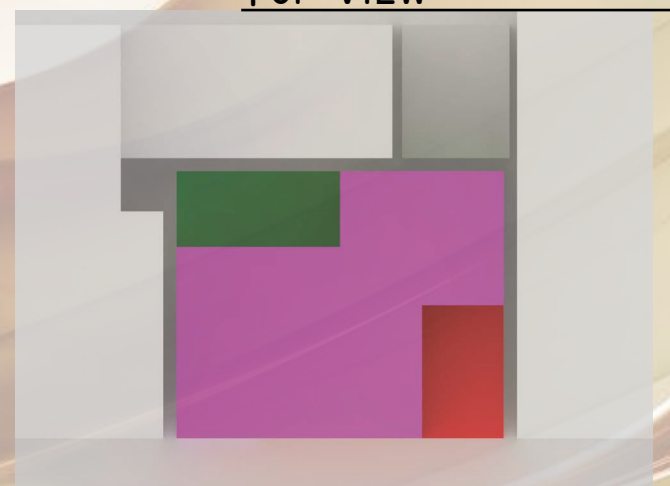


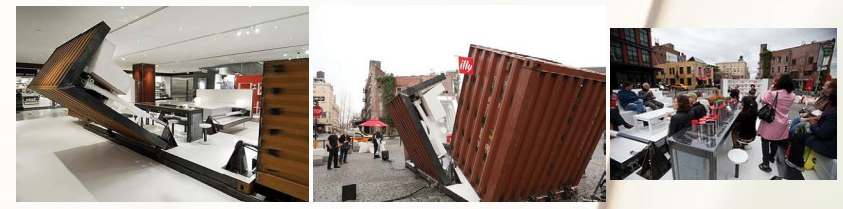
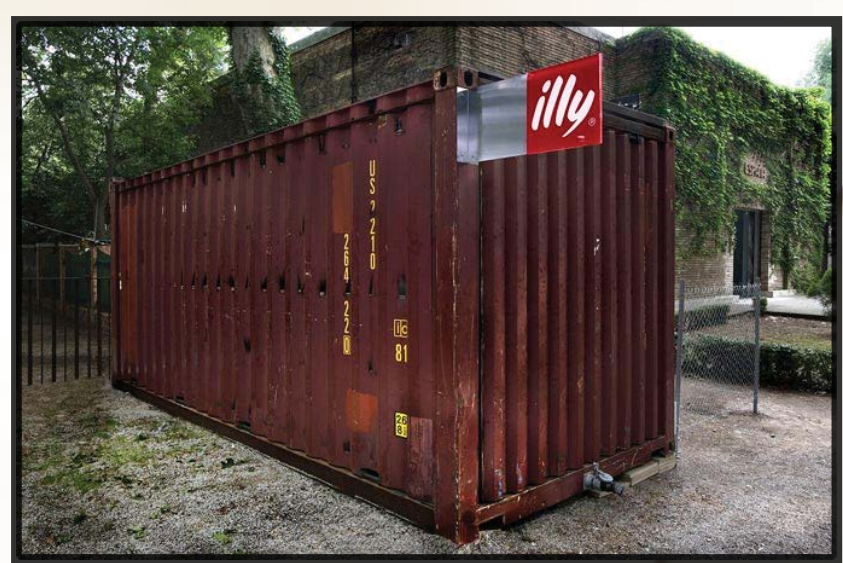
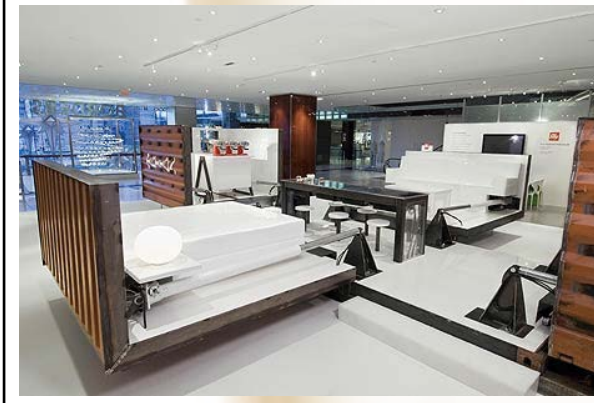
CELLAR & GARAGE

LEGEND	
	LIVING ROOM
	CELLAR
	KITCHEN/DINING RM
	MASTER BEDROOM
	WIC
	MASTER BATHROOM
	BEDROOMS
	OFFICE
	RESTROOM
	RECREATIONAL RM
	LAUNDRY ROOM
	EQUIPMENT CLOSET
	DRIVEWAY
	BACKYARD



TOP VIEW



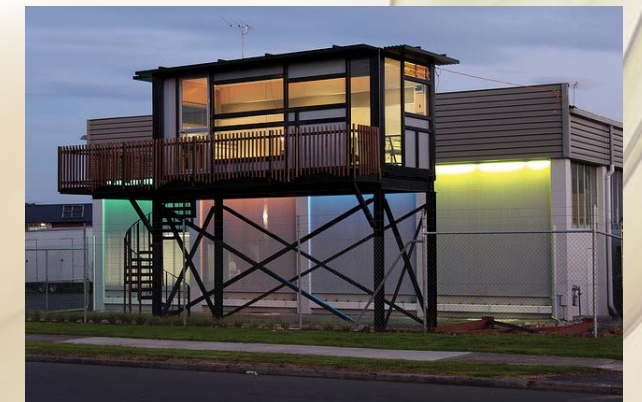


MEKA SHIPPING CONTAINER

LOCATION: CHARLES AND WASHINGTON STREET, NEW YORK NY
ARCHITECT: JASON HATLER AND CHRISTOS MARCOPOULOUS
DESCRIPTION: 320 SQ. FT, DURABLE AND SUSTAINABLE, 70% OF RECYCLED MATERIAL USED, CAN BE TRANSPORTED, ECO-FRIENDLY, AND EXTREMELY FLEXIBLE. CONTAINER IS PANELED IN CEDAR WOOD OVER A STEEL FRAME SHIPPING CONTAINER WITH DOUBLE GLAZED ARGON-FILLED WINDOWS, A BAMBOO INTERIOR, SLATE BATHROOM, AND 100% CEDAR CLADDING.

PUSH BUTTON HOUSE

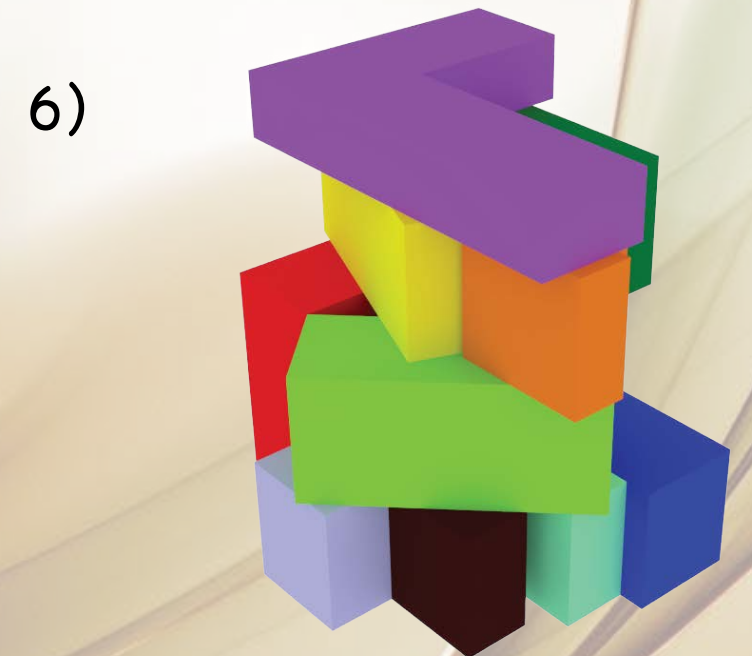
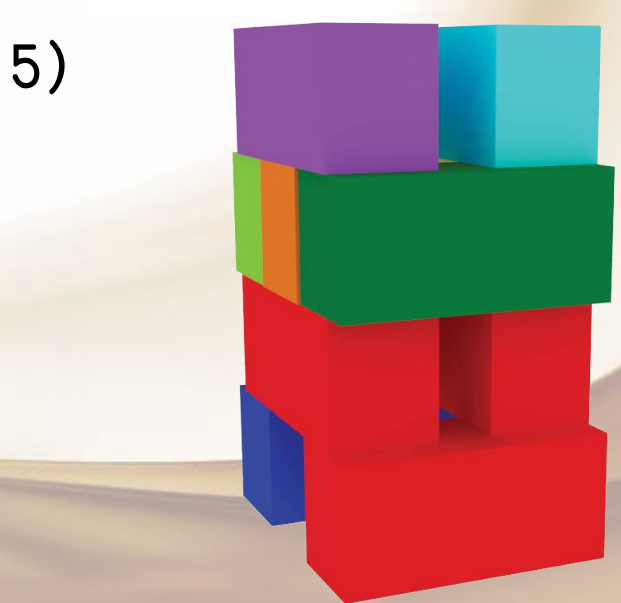
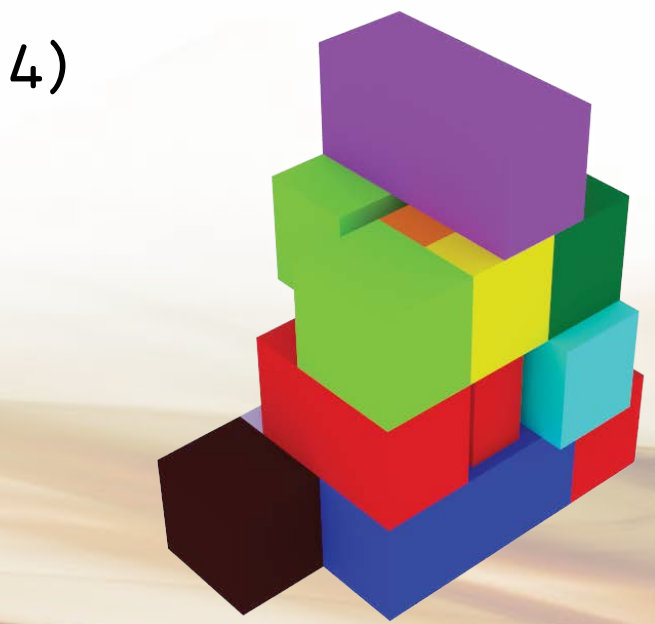
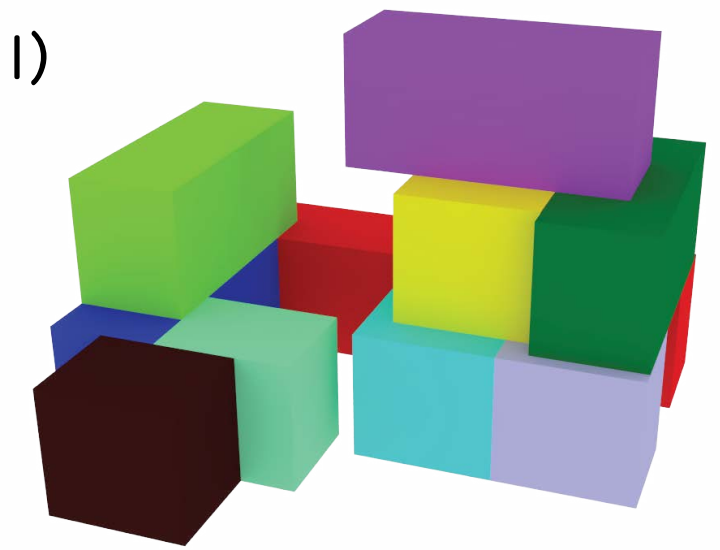
LOCATION: UNVEILED BY ILLY CAFFE AT THE 52ND INTERNATIONAL ART EXHIBITION IN VENICE BIENNALE.
ARCHITECT: ADAM KALKIN
DESCRIPTION: VIA COMPUTER CONTROLLED HYDRAULICS THAT TAKES ABOUT 90 SECONDS TO UNFOLD ITSELF. MADE FROM ABUNDANTLY AVAILABLE CARGO CONTAINERS WHICH ARE SAID TO BE WINDPROOF, FLOODPROOF, FIRE RESISTANT, ECO-FRIENDLY, LOW COST, QUICKLY ASSEMBLY, UNIQUE AND IN-HIGH DEMAND.

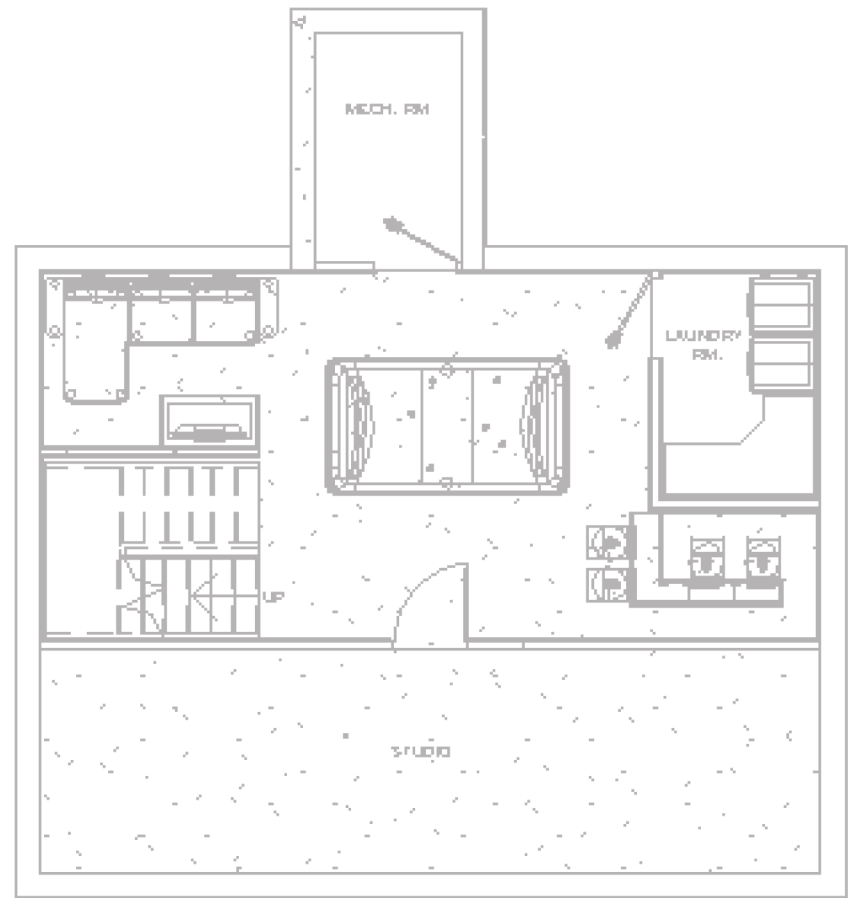


WHAT IS A SHIPPING CONTAINER?

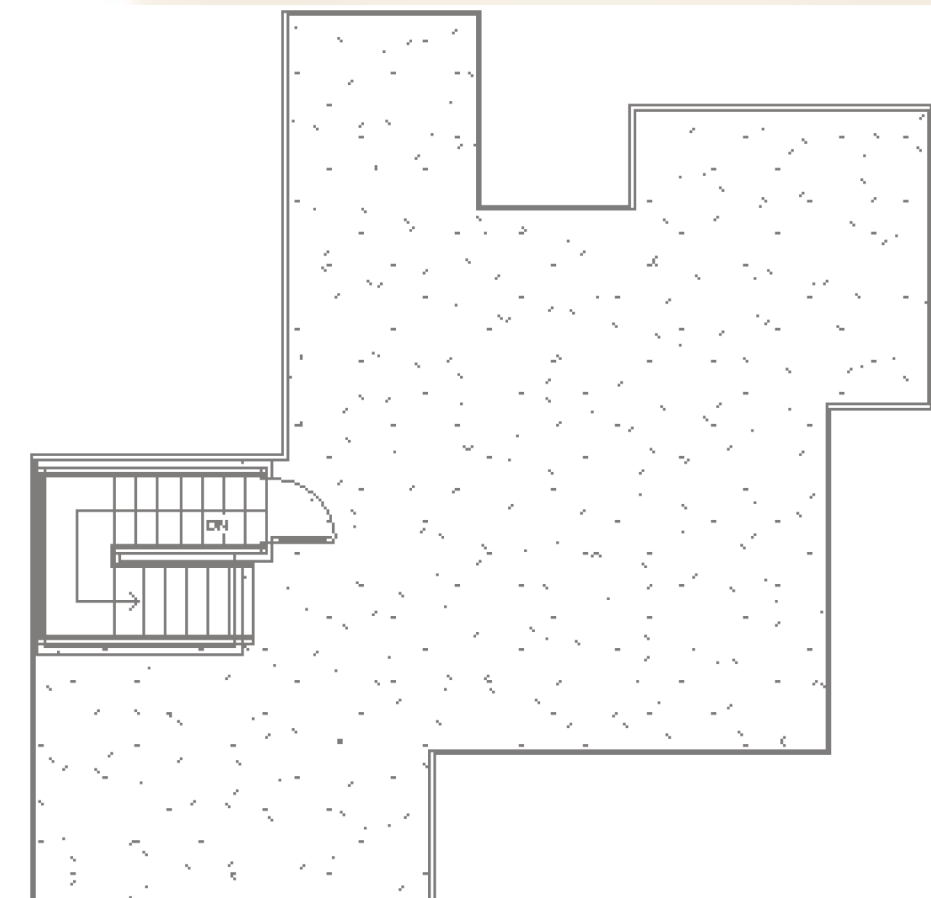
-A SHIPPING CONTAINER IS A CONTAINER WITH STRENGTH SUITABLE TO WITHSTAND SHIPMENT, STORAGE, AND HANDLING. SHIPPING CONTAINERS RANGE FROM LARGE REUSABLE STEEL BOXES USED FOR INTERMODAL SHIPMENTS TO THE UBIQUITOUS CORRUGATED BOXES. IN THE CONTEXT OF INTERNATIONAL SHIPPING TRADE, "CONTAINER" OR "SHIPPING CONTAINER" IS VIRTUALLY SYNONYMOUS WITH "INTERMODAL FREIGHT CONTAINER". THE INVENTION OF SHIPPING CONTAINERS HELPED ADVANCE THE GLOBALIZATION OF COMMERCE. TODAY, THEY ARE CONSIDERED SUSTAINABLE AND ARE BEING USED AS AN ARCHITECTURAL FOUNDATION FOR HOUSING.

LEGEND	
	LIVING ROOM
	CELLAR
	KITCHEN/DINING RM
	MASTER BEDROOM
	WIC
	MASTER BATHROOM
	BEDROOMS
	OFFICE
	RESTROOM
	RECREATIONAL RM
	LAUNDRY ROOM
	EQUIPMENT CLOSET
	DRIVEWAY
	BACKYARD

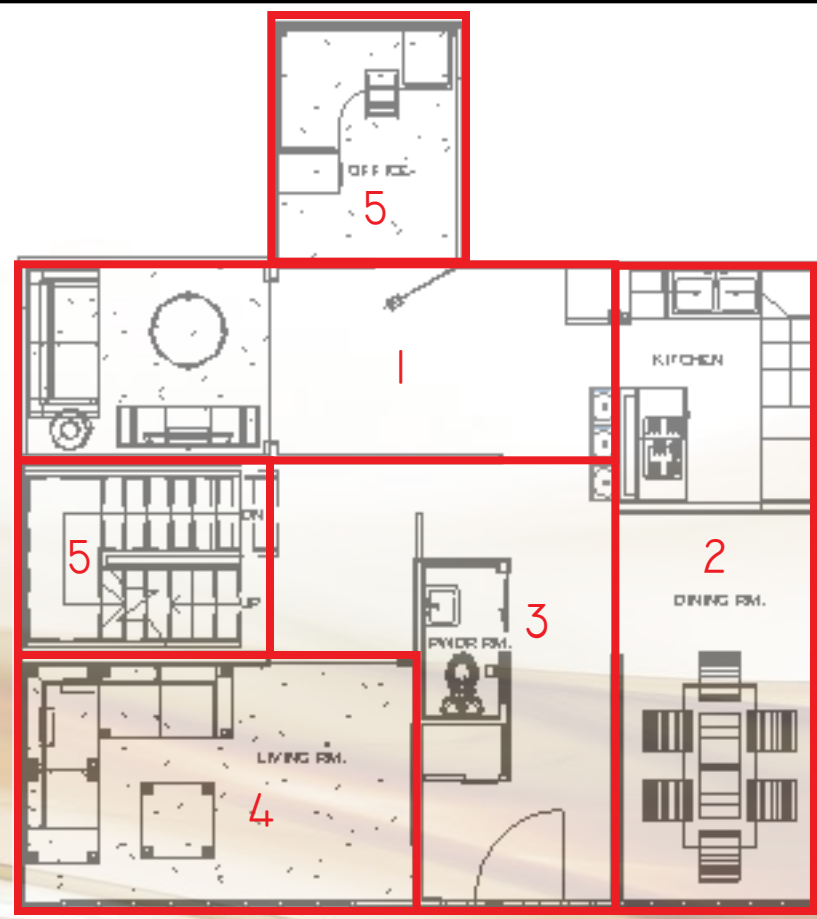




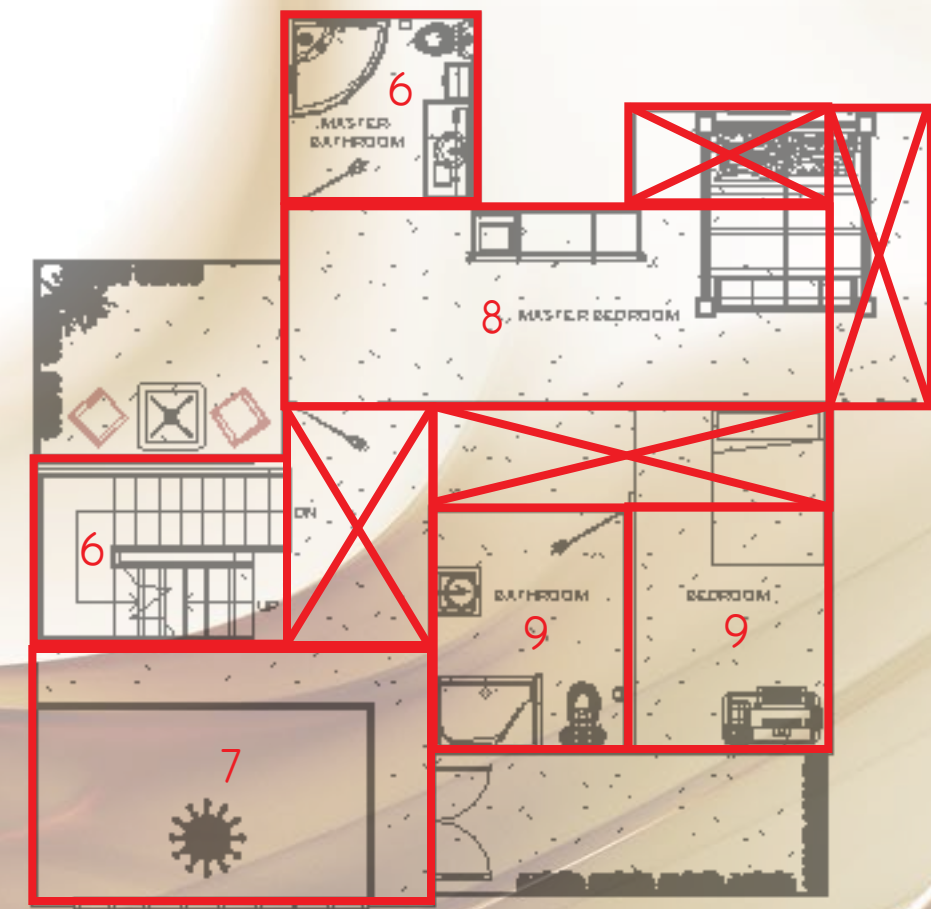
CELLAR PLAN



ROOF PLAN

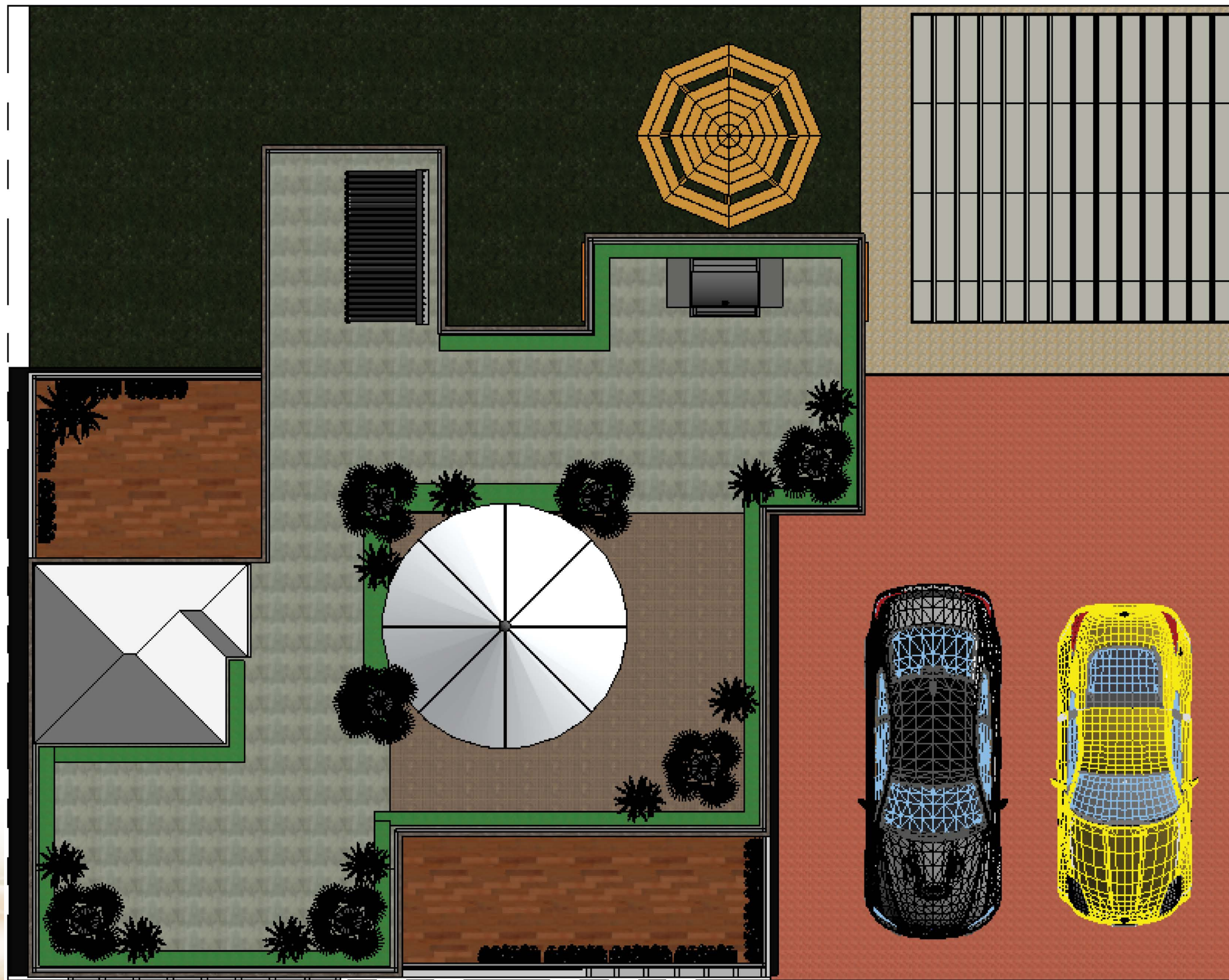
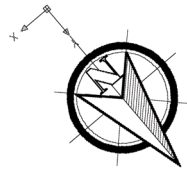


FIRST FLOOR PLAN



SECOND FLOOR PLAN

@ 1/16" = 1'-0"



— DEAN STREET —

SCALE: 1" = 10'-0"

LANDSCAPE



MATERIALS



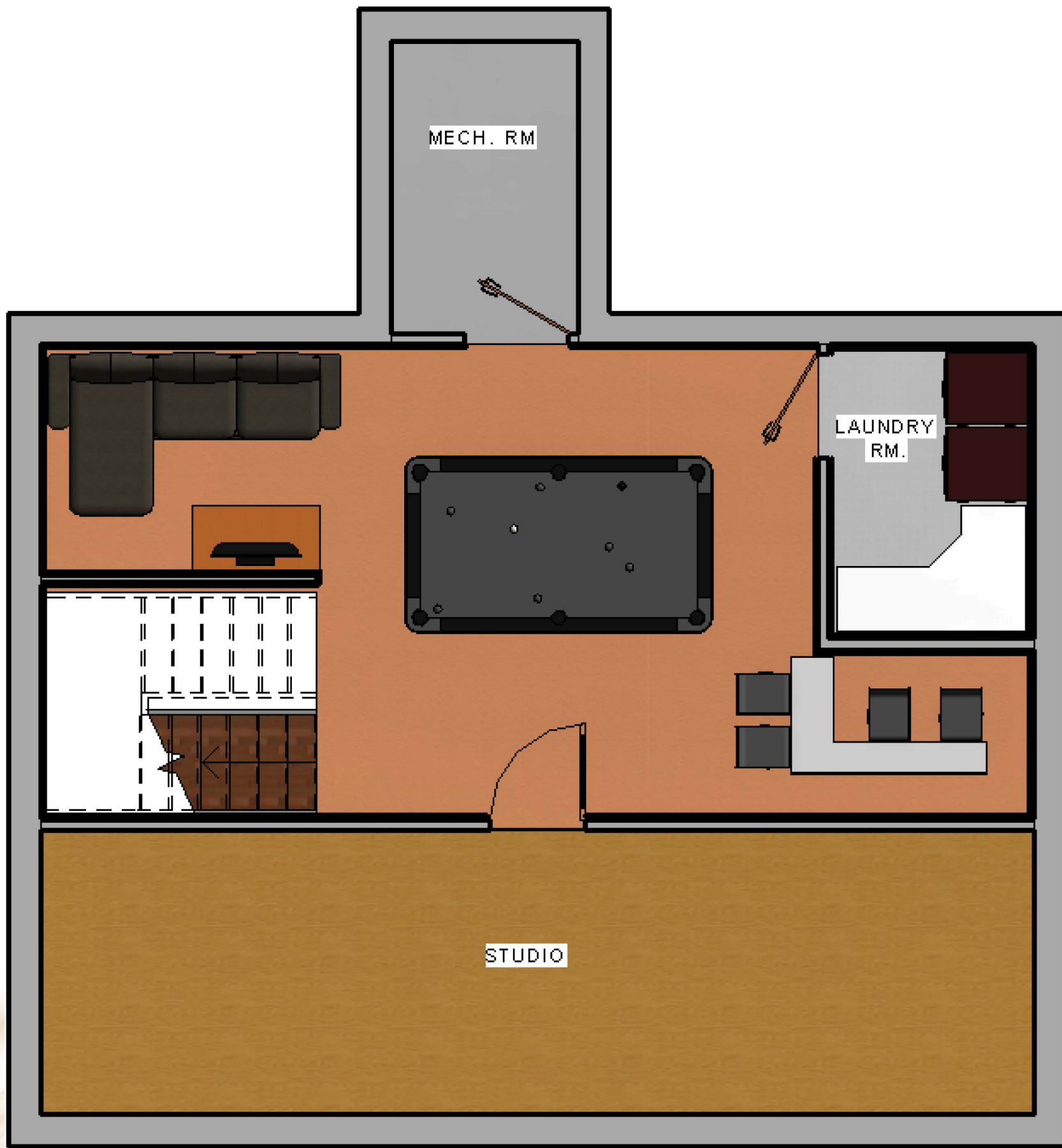
TIGER WOOD



WATERPROOF CARPET

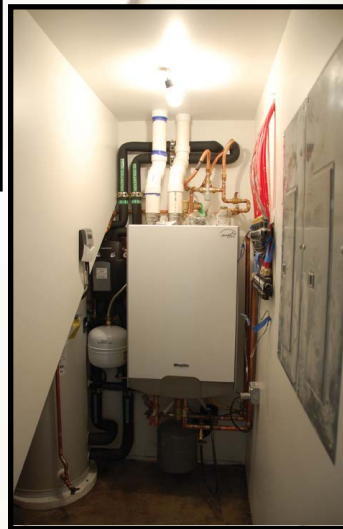
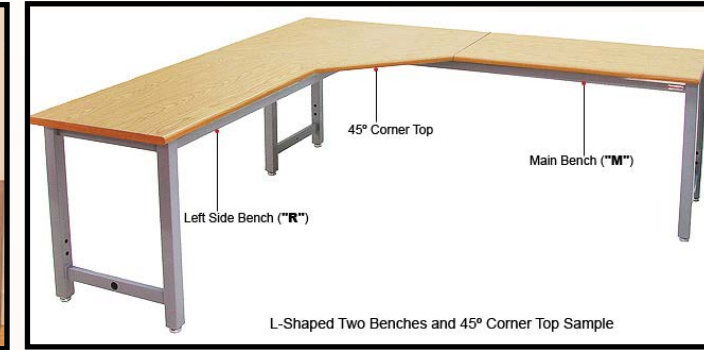


GLASS RAILING



SCALE: 1/8" = 1'-0"

FURNITURE



MATERIALS



TILES



BEIGE CARPET

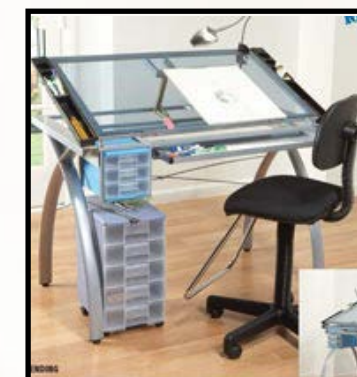


VINYL LAMINATE OAK WOOD



SCALE: 1/8" = 1'-0"

FURNITURE



MATERIALS



RED OAK



BEIGE CARPET



CERAMIC TILES



SCALE: 1/8" = 1'-0"

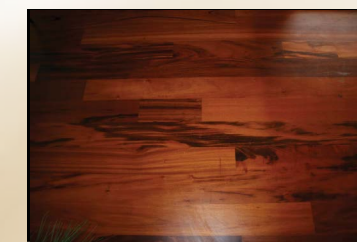
FURNITURE



MATERIALS



BEIGE CARPET



TIGER WOOD



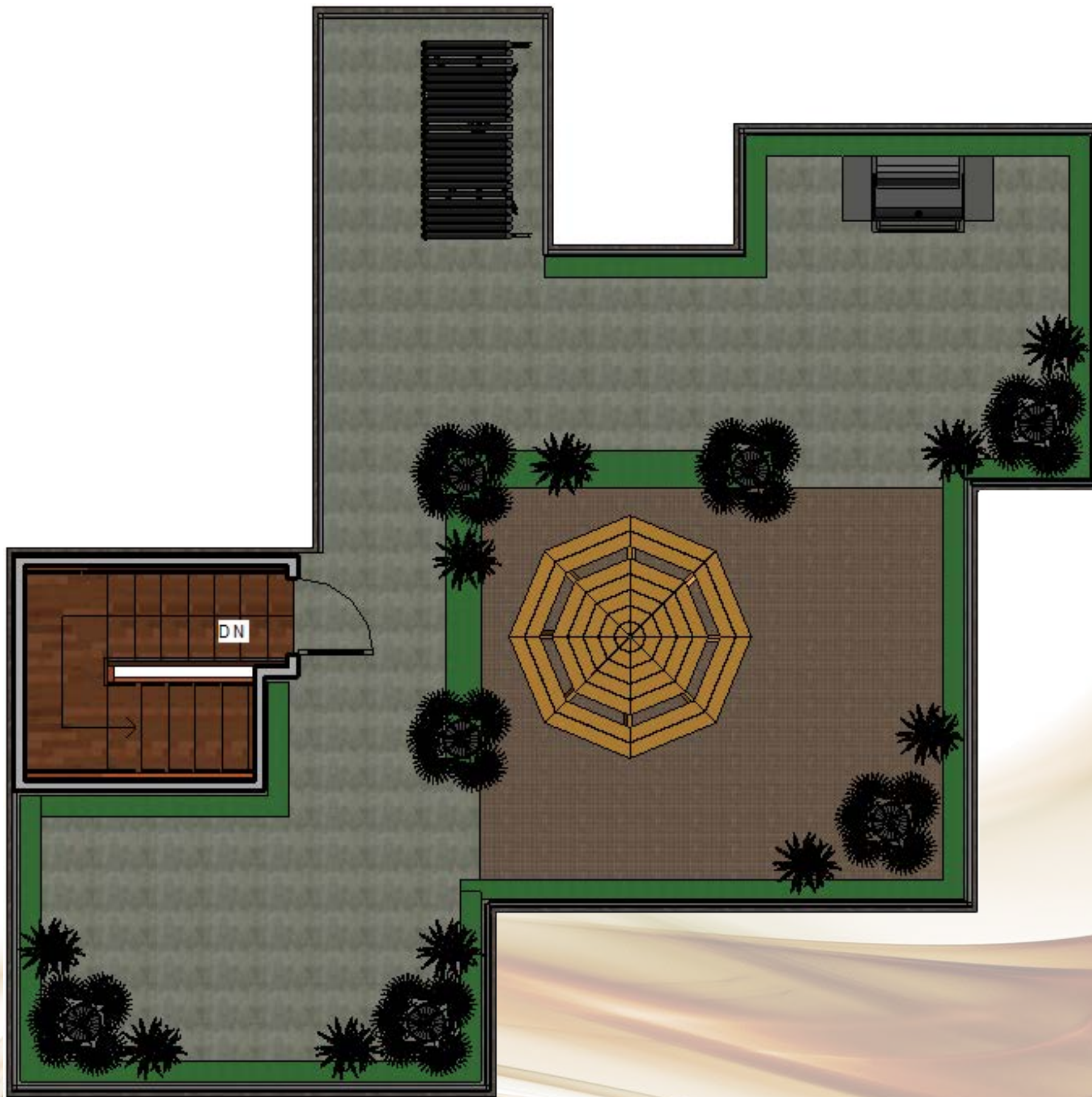
OAK



WHITE CERAMIC TILES



BATHROOM CERAMIC TILES

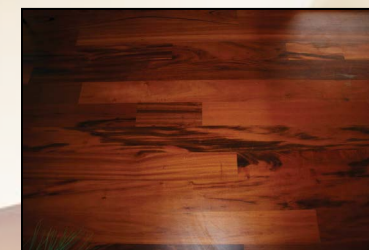


SCALE: 1/8" = 1'-0"

FURNITURE



MATERIALS



TIGER WOOD



WATERPROOF CARPET



GLASS RAILING

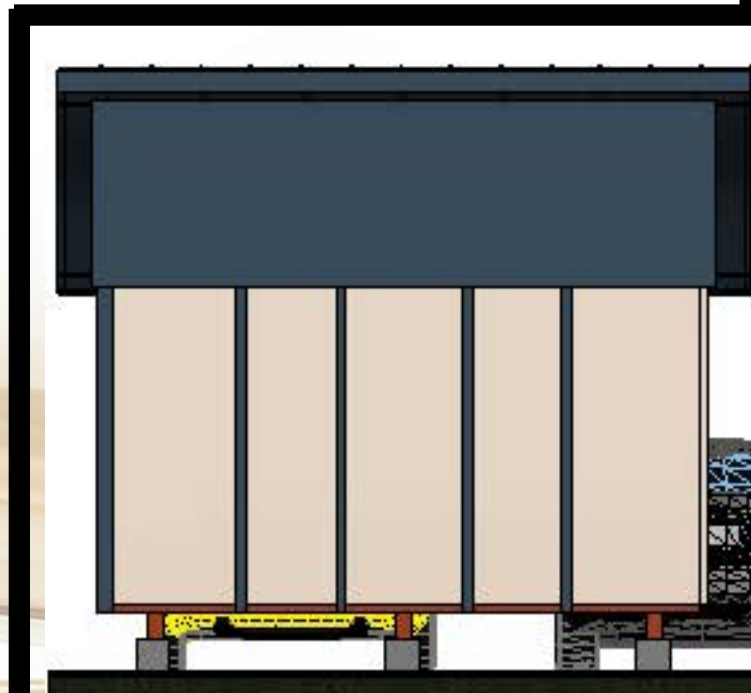
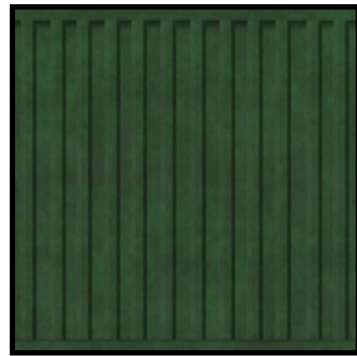


SCALE: 1/8" = 1'-0"



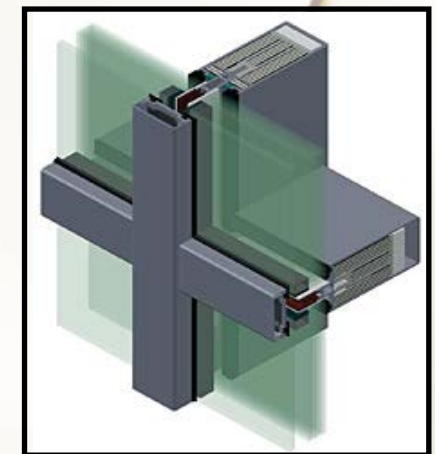
SCALE: 1/8" = 1'-0"

MATERIALS

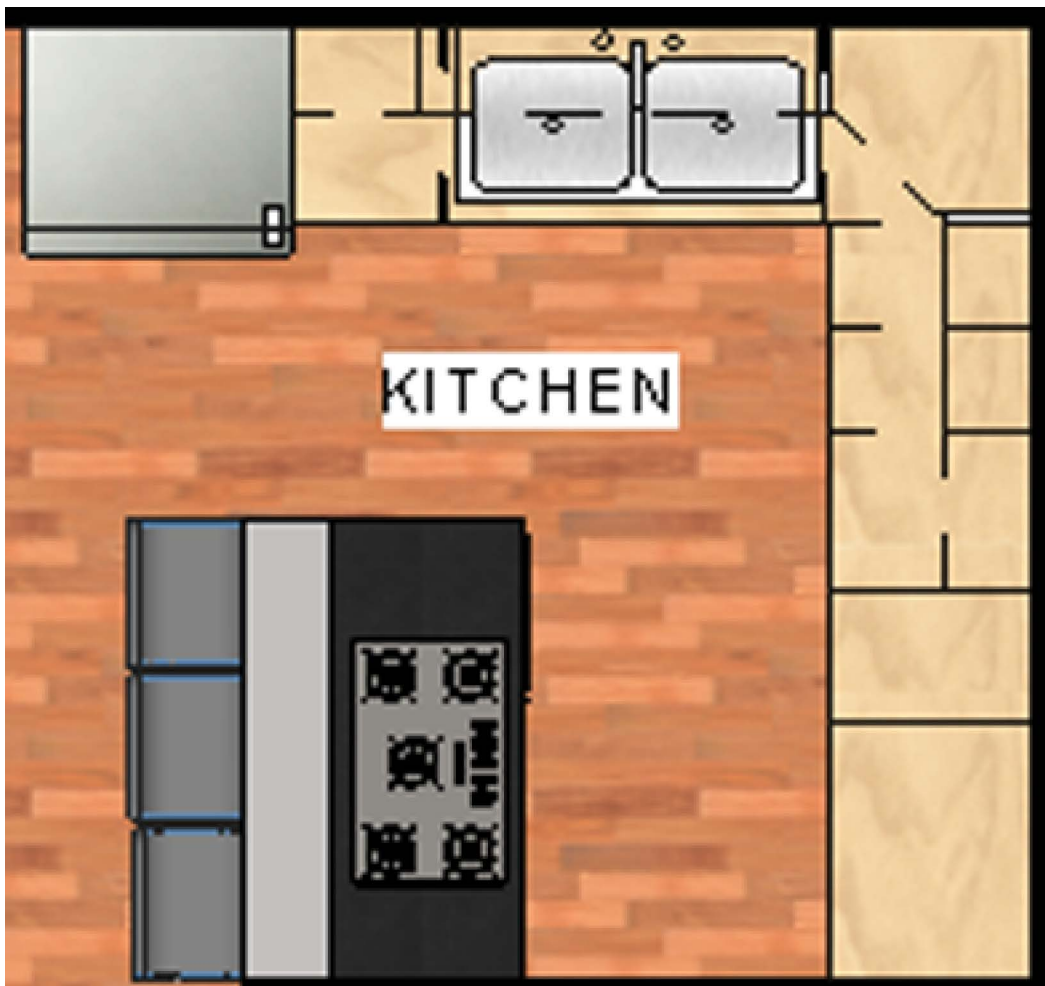


SCALE: 1/8" = 1'-0"

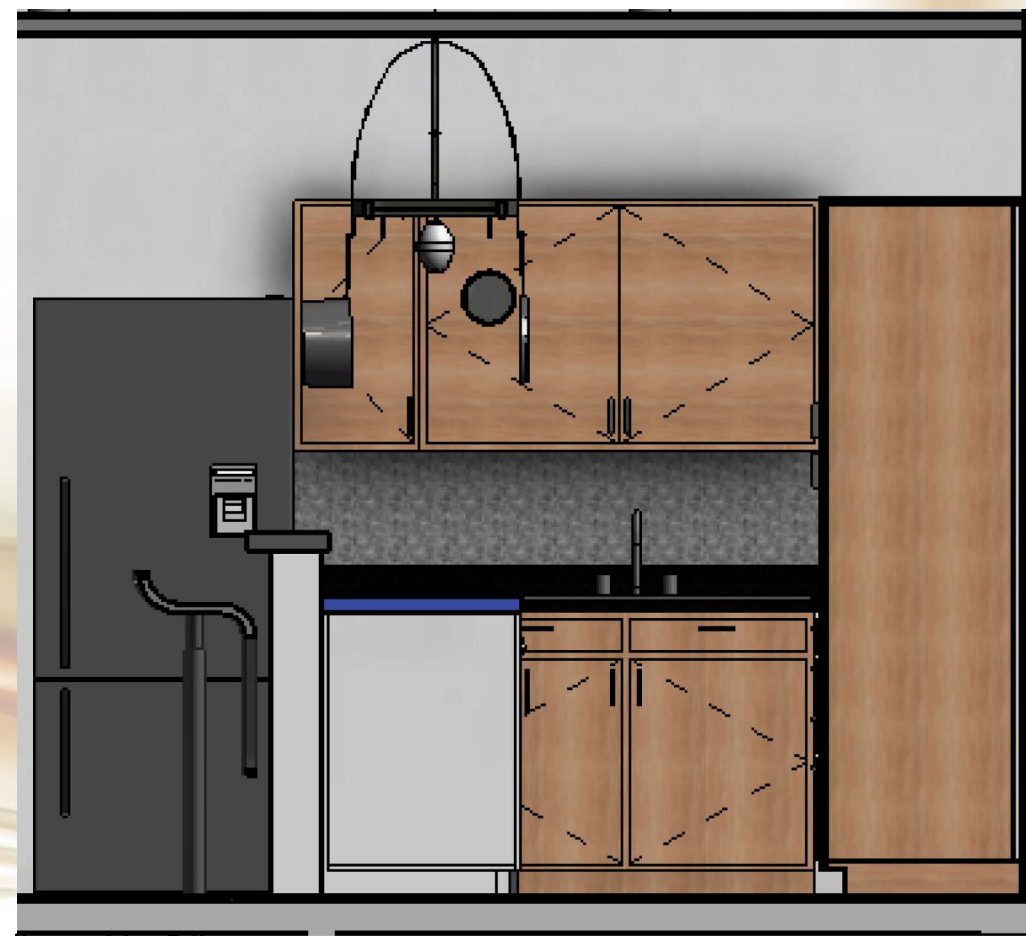
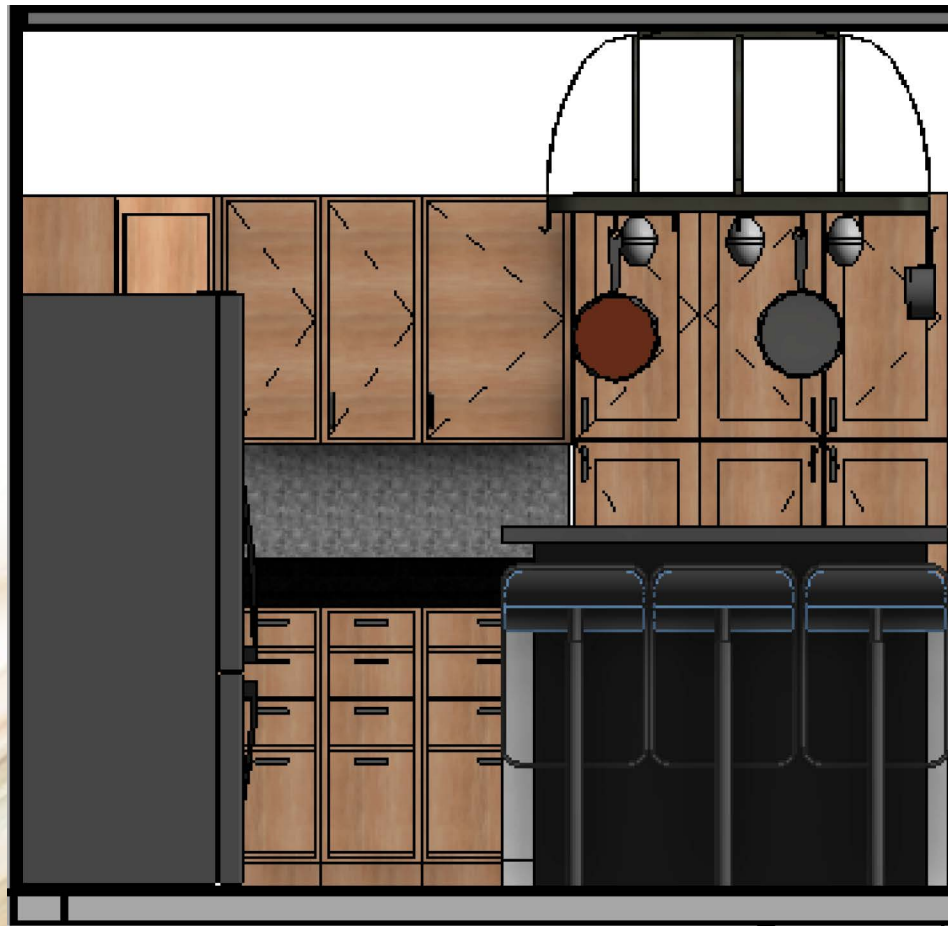
MATERIALS



SCALE: 1/8" = 1'-0"



FURNITURE

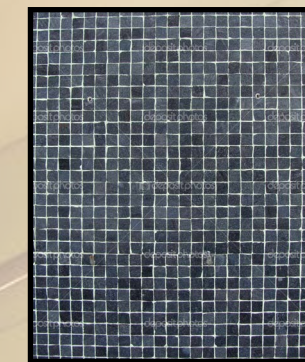


SCALE: 1/4" = 1'-0"

MATERIALS



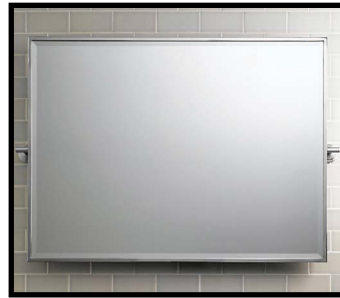
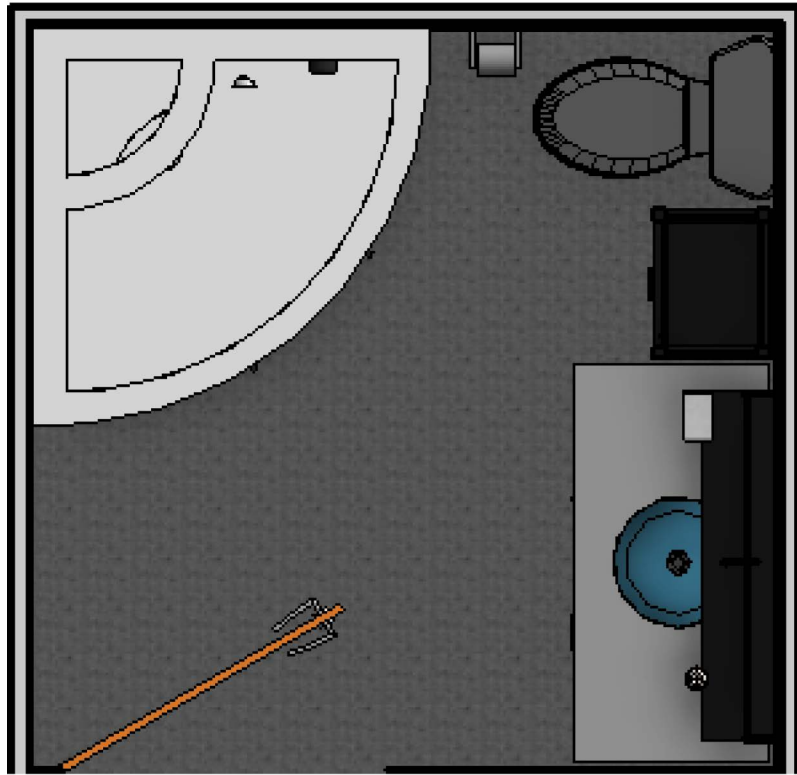
BIRCH NATURAL



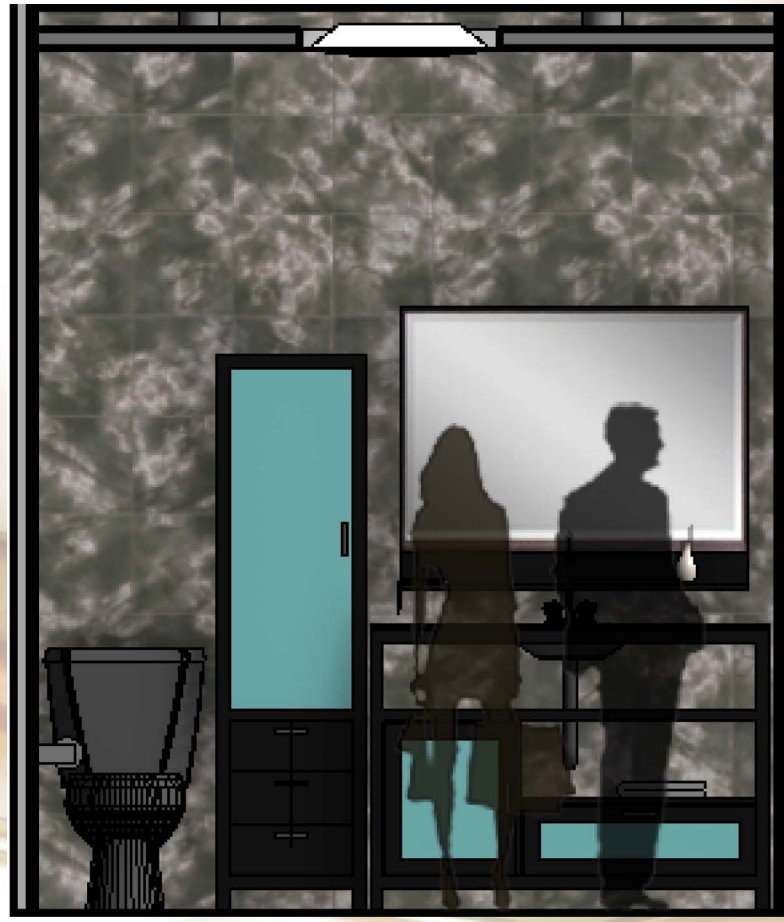
BACKSPASH CERAMIC TILE



MARBLE COUNTER TOP

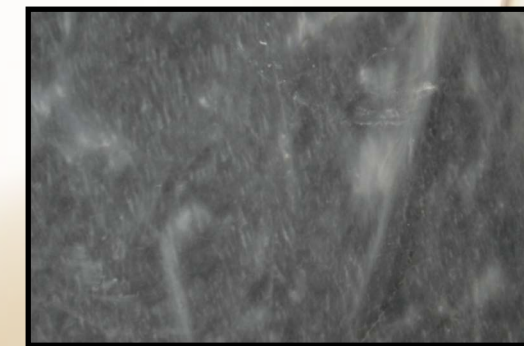


FURNITURE

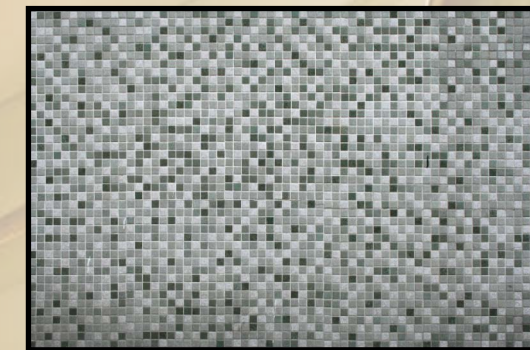


SCALE: 1/4" = 1'-0"

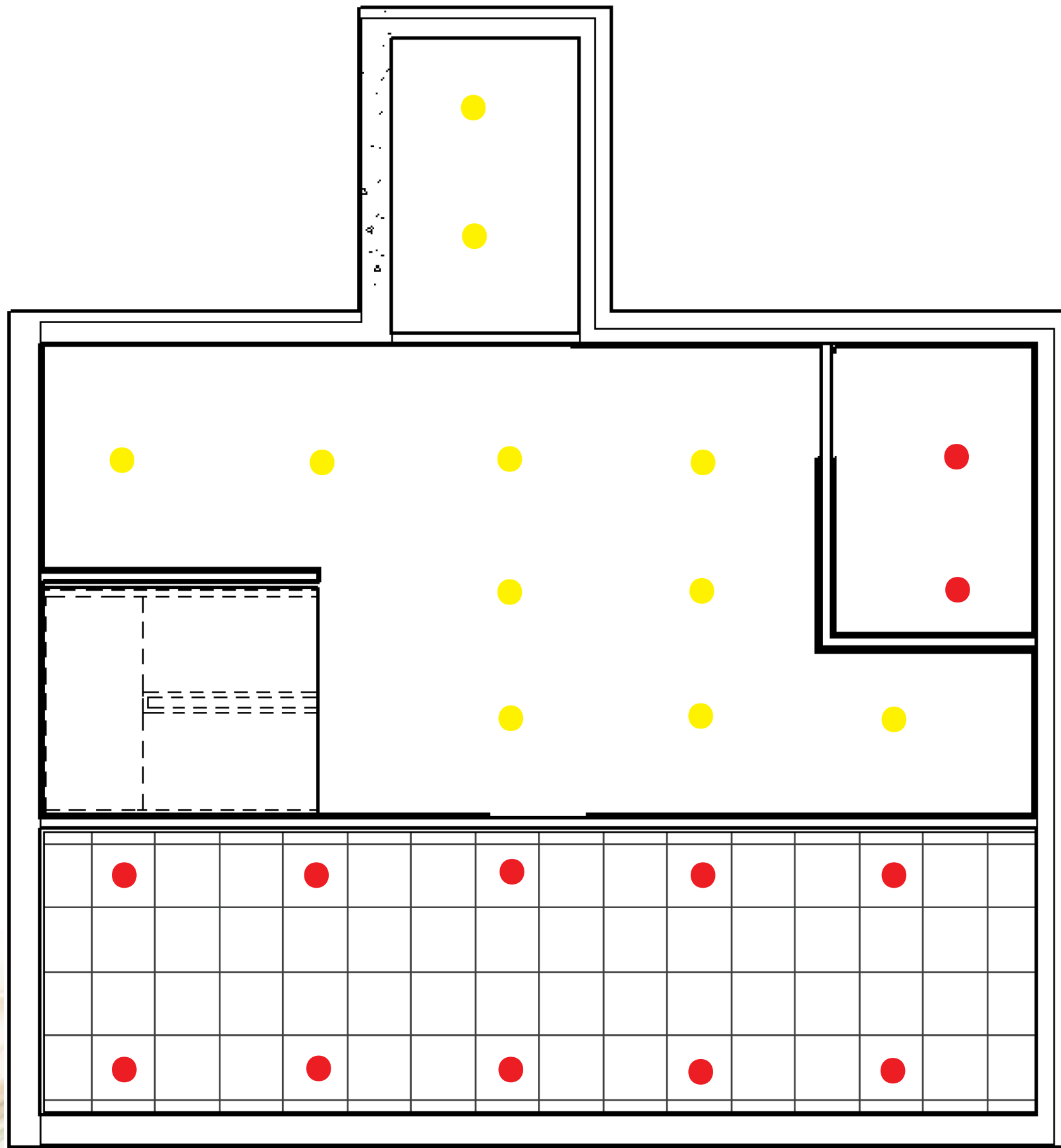
MATERIALS



MARBLE TILES




BATHROOM TILES



SCALE: 1/8" = 1'-0"

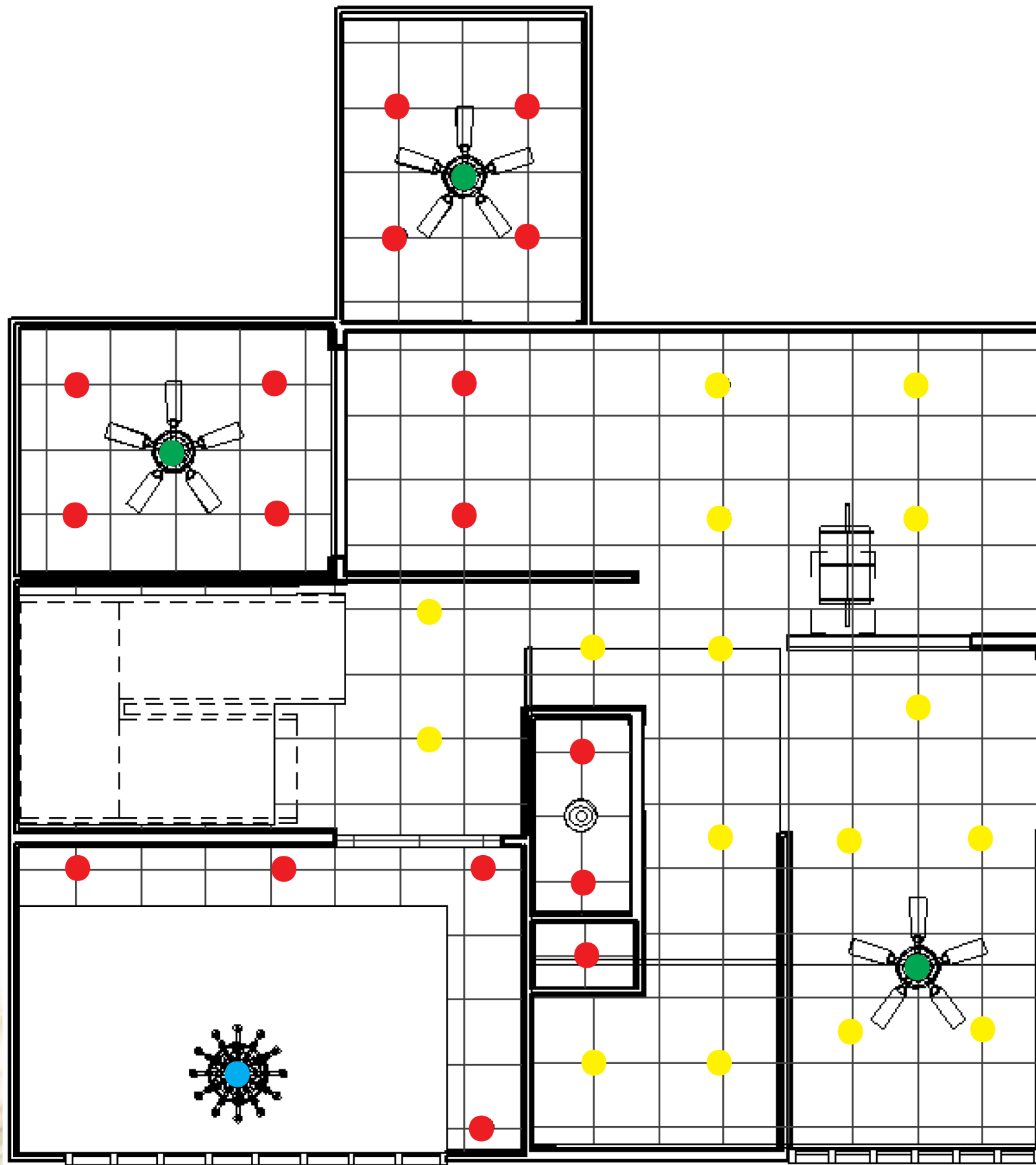
KEY LEGEND

 6" Boat Recessed Downlight: halogen (adjustable)

 6" LED Retrofit Recessed Downlight

MATERIALS





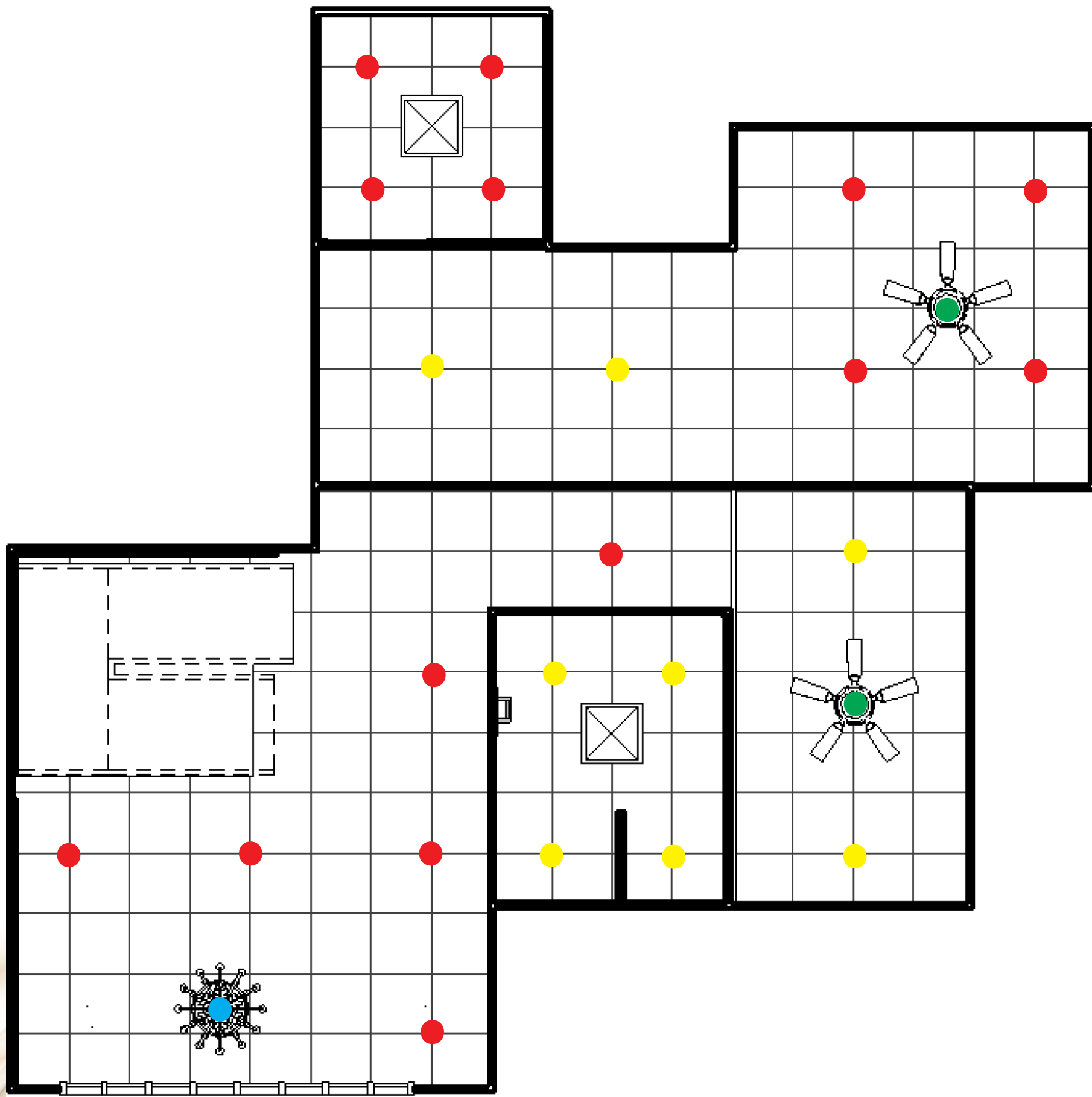
SCALE: 1/8" = 1'-0"

KEY LEGEND

- 6" Boat Recessed Downlight: halogen (adjustable)
- 6" LED Retrofit Recessed Downlight
- Contemporary 52" Brushed Nickel Ceiling Fan
- Modern Chandelier

MATERIALS





SCALE: 1/8" = 1'-0"

KEY LEGEND

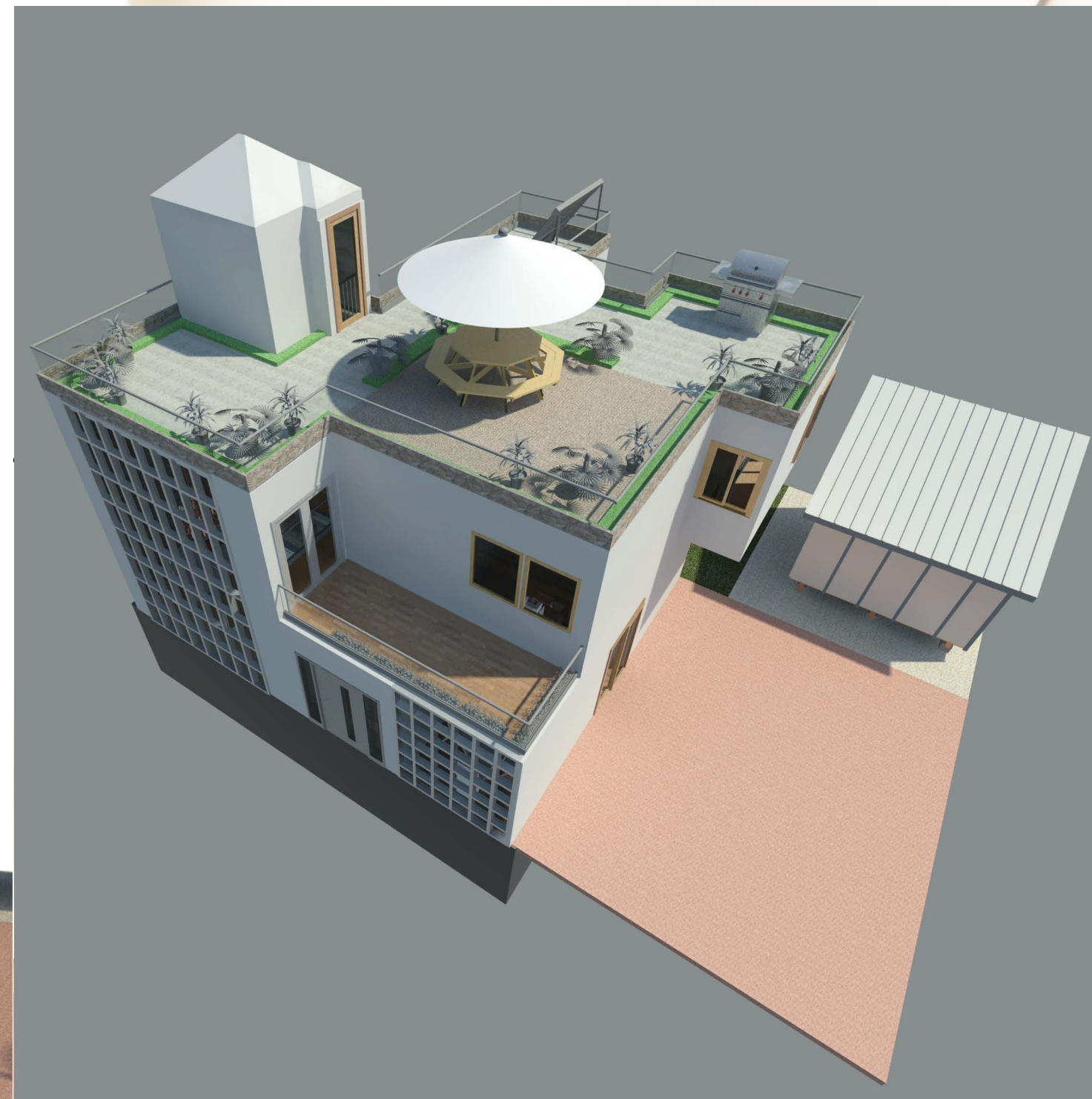
- 6" Boat Recessed Downlight: halogen (adjustable)
- 6" LED Retrofit Recessed Downlight
- Contemporary 52" Brushed Nickel Ceiling Fan
- Modern Chandelier

MATERIALS





PERSPECTIVE VIEW 1



PERSPECTIVE VIEW 2



KITCHEN LAYOUT



DOUBLE HEIGHT LIVING ROOM