



Arch 3510 Design V  
Assignment 2

By Ariandy Gomez  
Prof.Jill

## ZHONGSHUGE BOOKSTORE



- Architects X+Living
- Location Chengdu, China
- Design Director Xiang Li
- Design Team Huan Liu, Chen Fan
- Area 1000.0 m<sup>2</sup>

Lose yourself in an optical illusion of space and form.

The Zhongshuge bookstore is a commercial store that makes the user feel at ease with the mixture of nature and architecture.

The shape of bamboo shoots and landscape architectural are central to this building's design.

The building is 1000.0 m<sup>2</sup> which is 10763.9 sq ft, twice the area of our site in Dumbo.



# Program

- Commercial Space
- Bookstore
- Children's Area
- Purpose of the Building is to sell you a book and invited the average person into a space that is looks much larger than it actually is.



Children's Area

# Public vs. private

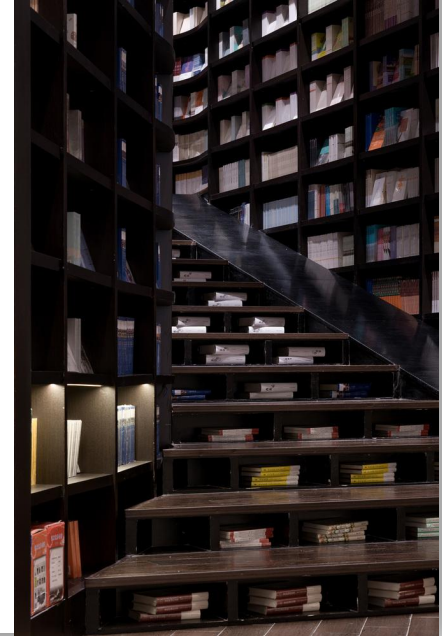
## Public

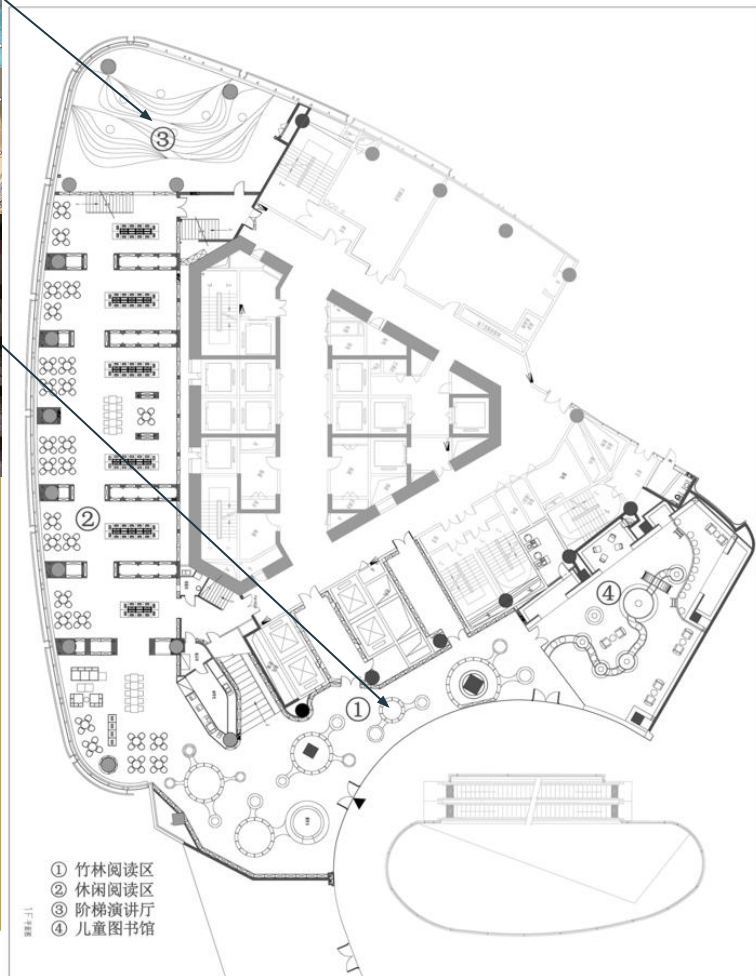
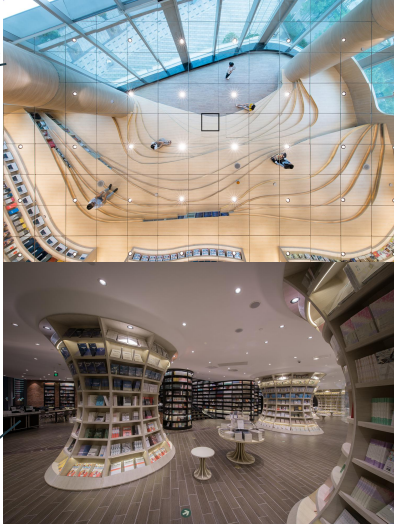
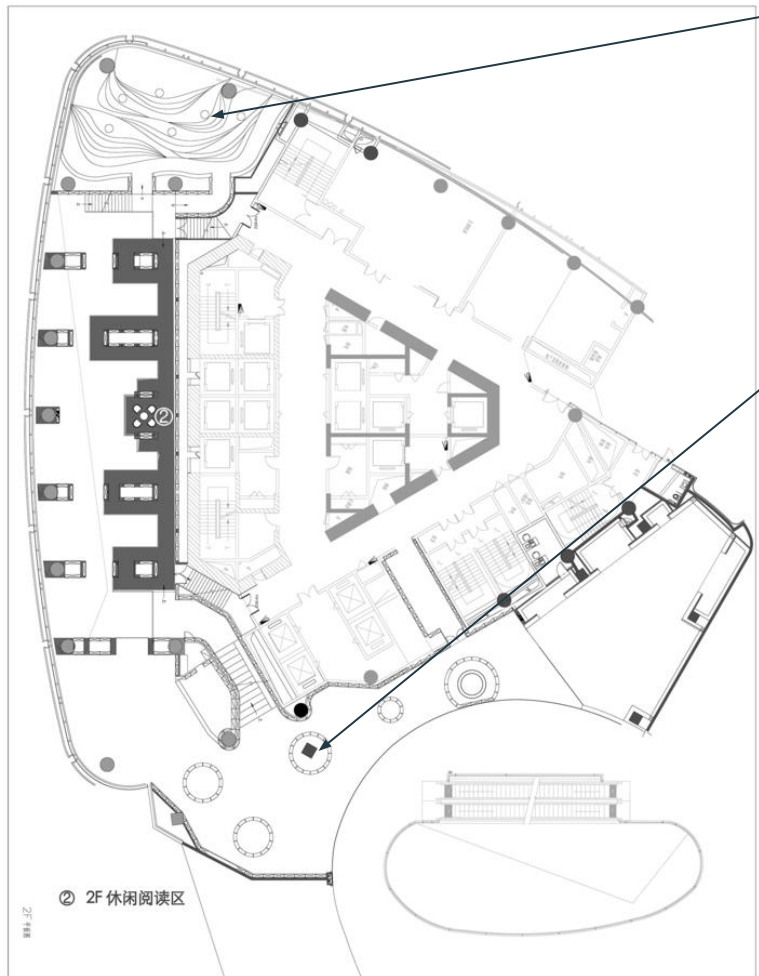
- The store is in a mall located in Yintai Center in the city of Chengdu
- During the stores open hours anyone can enter.
- There is a sitting area that is ment to allow a person to read the book they are about to purchase.



## Private

- The store employees must have their own private space.
- Restroom /Back space for storage
- No loitering?





# Floor Plans

The hierarchy of this store is more intune with use of bamboo and nature based these area have more attention to it. The bookshelves are curved to open up the space in the bookstore. The hierarchy is sized based on the importance to the customer. It is also centralized as all the space seem to be in a circulator fashion.

## Hierarchy



# Approach and Circulation etc.

The entrance in with a mall so the way to enter the store is a escalator within.



# Location

Chengdu, China

Chengdu is the capital of southwestern China's Sichuan province.







The lighting in this store is in the form of a spotlights and lights inside the ceilings.

Light/ lighting

# Scale

Compared to our site this site is much larger by the factor of two.

## Name, Logo, colors

- The name of the building is zhongshuge.
- The color of the store is mainly white space, and has another space brown wood floors and brick wall aesthetics.
- Mirror ceiling help to create the illusion of space.



## Interior Details/Interior Materials



# Zhijian Bookstore /SMY Design

Architects SMY DESIGN

Location Wuling district, Changde city, Hunan Province, China

Lead Architect Ningjian Liang

Design Team Xuepeng Jin, Piao Sun, Xinli Li

Area 795.0 m<sup>2</sup>

Project Year 2017

Photographs Lu Liao

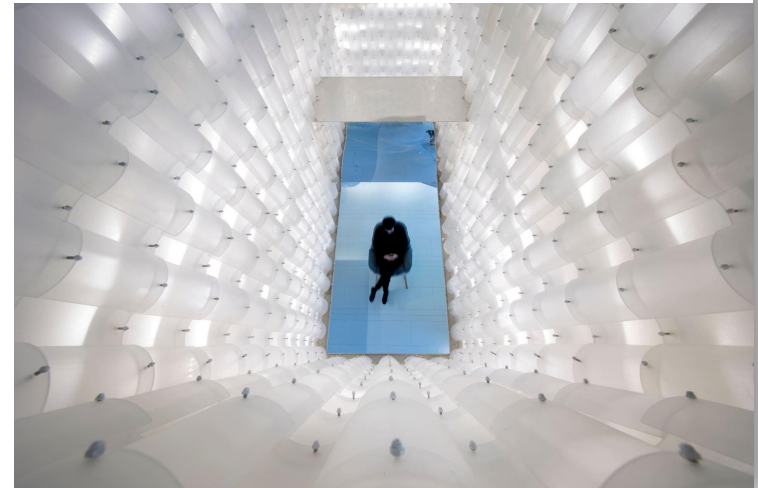
Manufacturers

Xin Wang, Hong Da, Jun Yi Construction Engineering (Shanghai) Co., Ltd., Lang Da Ke, Ka Xuan Men

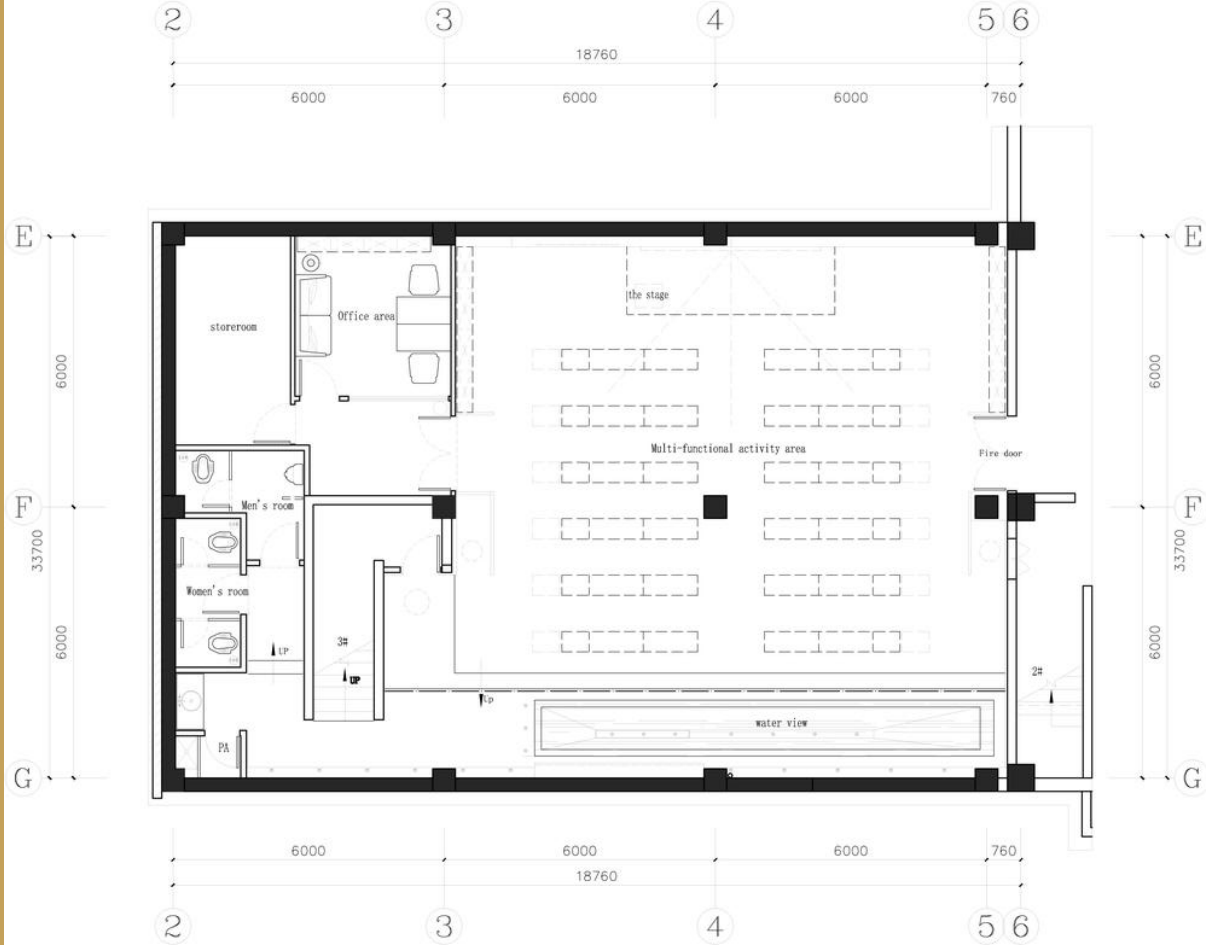


# Public vs. private

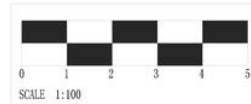
- The building is a space for public use to have people reflect on themselves and buy books or read in a quiet space.
- Public: Multi functional activity area, study areas, personalized reading area
- Private: Office spaces, bathrooms and kitchen.



# Floor Plans

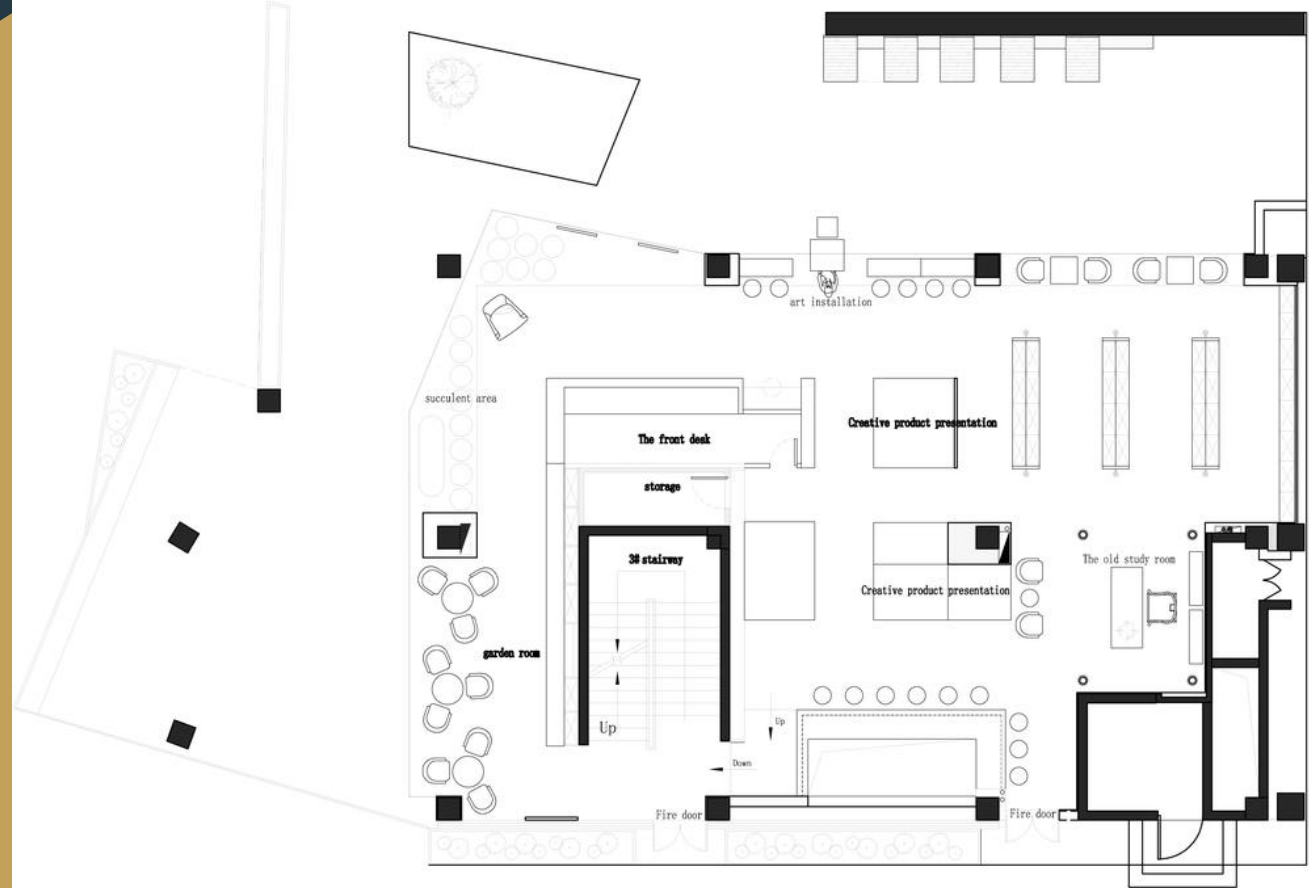


Basement Floor PLAN  
SCALE 1:100

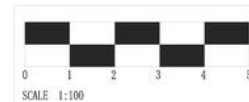




# Floor Plans

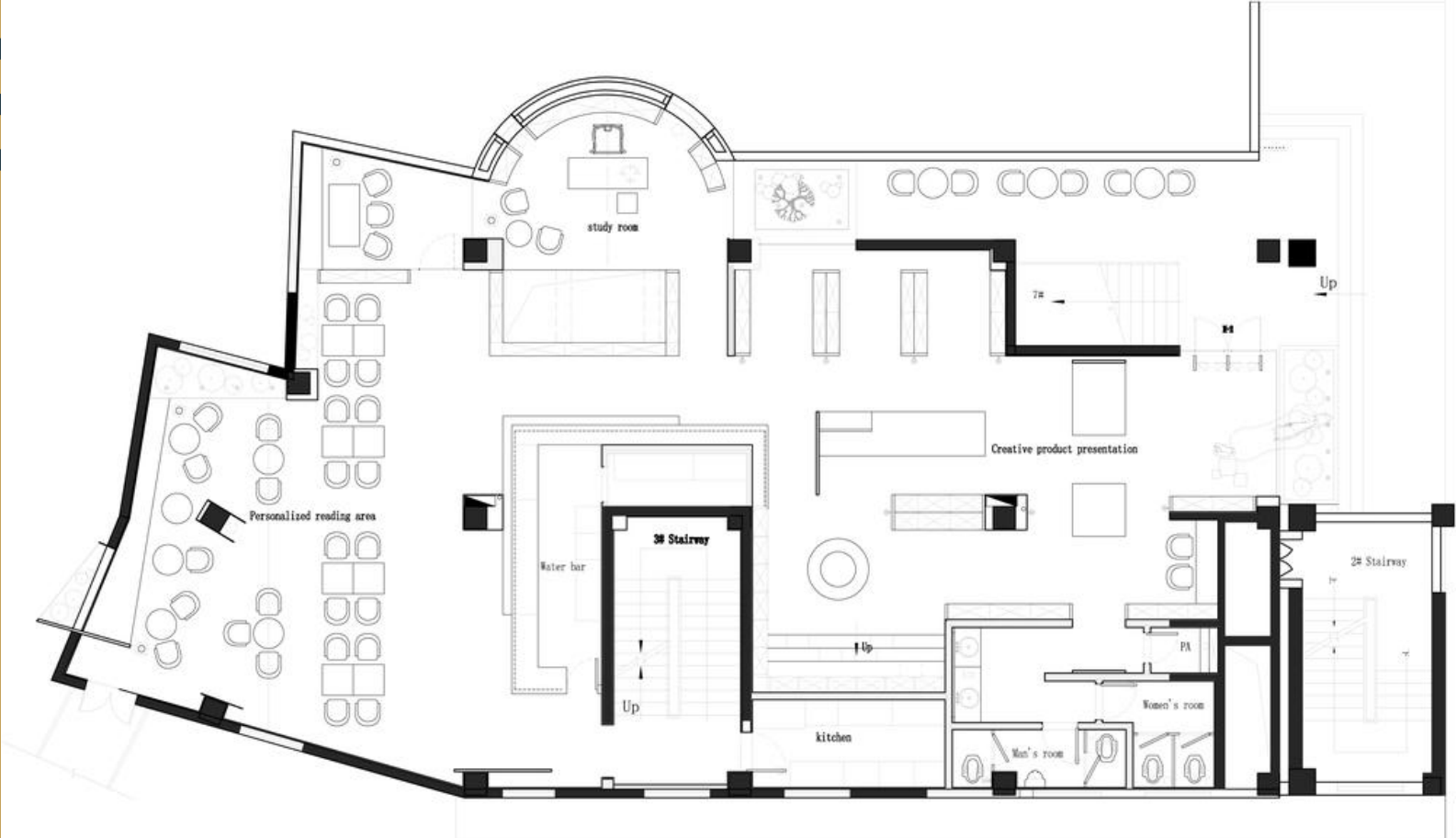


First Floor PLAN  
SCALE 1:100

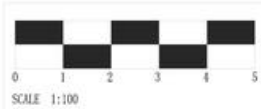




# Floor Plans



Second Floor Plan PLAN  
SCALE 1:100



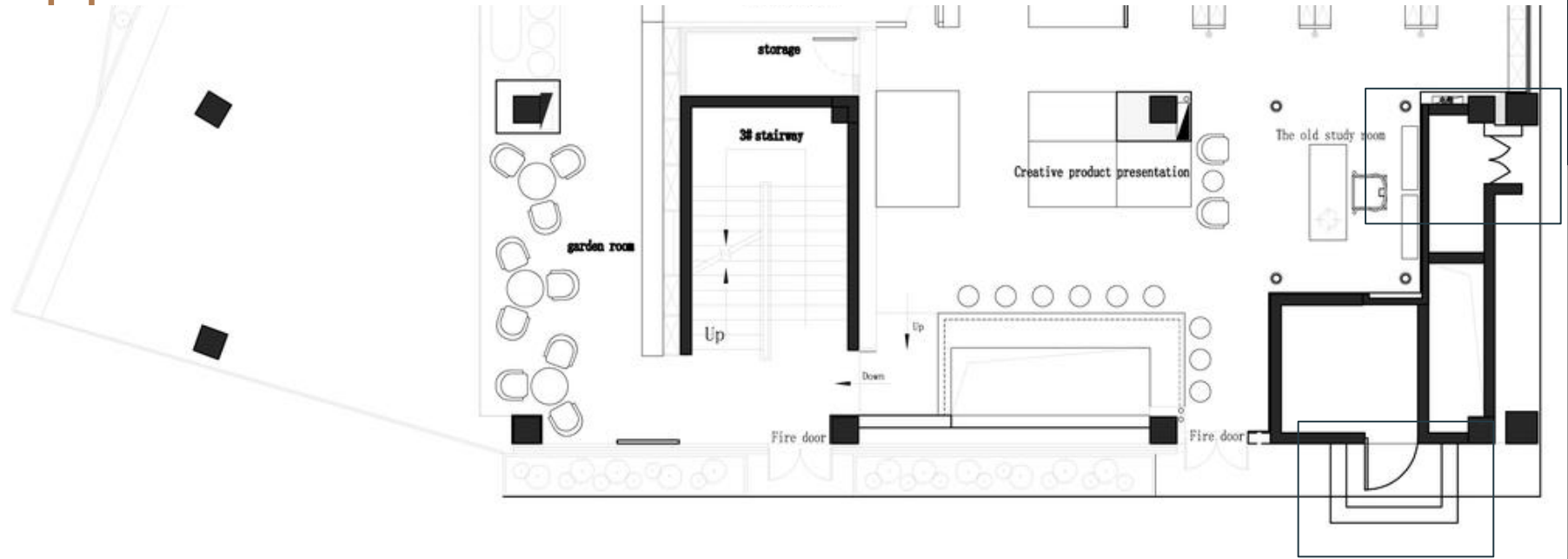
Mostly influenced by the old wall that was there before. The present is influenced by the past.



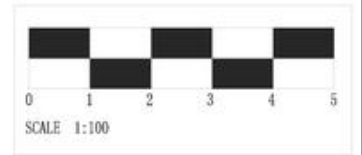
Hierarchy



# Approach and Circulation etc.



First Floor PLAN  
SCALE 1:100



# Location

Wuling District  
Changde City,  
Hunan Province,  
China

The city of Changde is a place of history and culture near the Dongting Lake.



-The lighting in this store is mainly from outside and lights are cut into the ceiling



Light/ lighting



# Scale

-795.0 m<sup>2</sup> in ft is 8557.31, which is 120% larger than our site.

# Name, Logo, colors

-White became the theme of the bookstore for its purifying theme

# Program

- Commercial space
- Bookstore
- Study area



Interior Details/Interior Materials

## Narrative Description

Both of these are architecture firms that designed their buildings created structures to enhance the area around. They had to work with the surrounding area to have contextualism work for them. The first store had an optical illusion to fool the eyes into seeing a larger space than it actually was, but they took the concept of nature and integrated this with the modern store they had to create in 2017. The second bookstore wanted a quiet and peaceful place to have the user read and meditate. The color white is used to help with the concept of purifying oneself from the aura of ignorance and obtain knowledge. The West gates played a huge role in the part the development of the building as it was the only remaining part of the building that was ancient China. This gives a concept that an Architect has to fight against, as in today world most if not all land has context, whether it be from the past or present. This helps to create a restrictive creativity, which can end up being an more interesting concept. This teaches resourcefulness and adaptability, which are important skills to learn and strengthen.

# Cite works

<https://www.archdaily.com/897895/zhijian-bookstore-smy-design>

[https://commons.wikimedia.org/wiki/File:Wuling,\\_Changde,\\_Hunan,\\_China\\_-\\_panoramio.jpg](https://commons.wikimedia.org/wiki/File:Wuling,_Changde,_Hunan,_China_-_panoramio.jpg)

<https://www.archdaily.com/873547/zhongshuge-bookstore-x-plus-living>