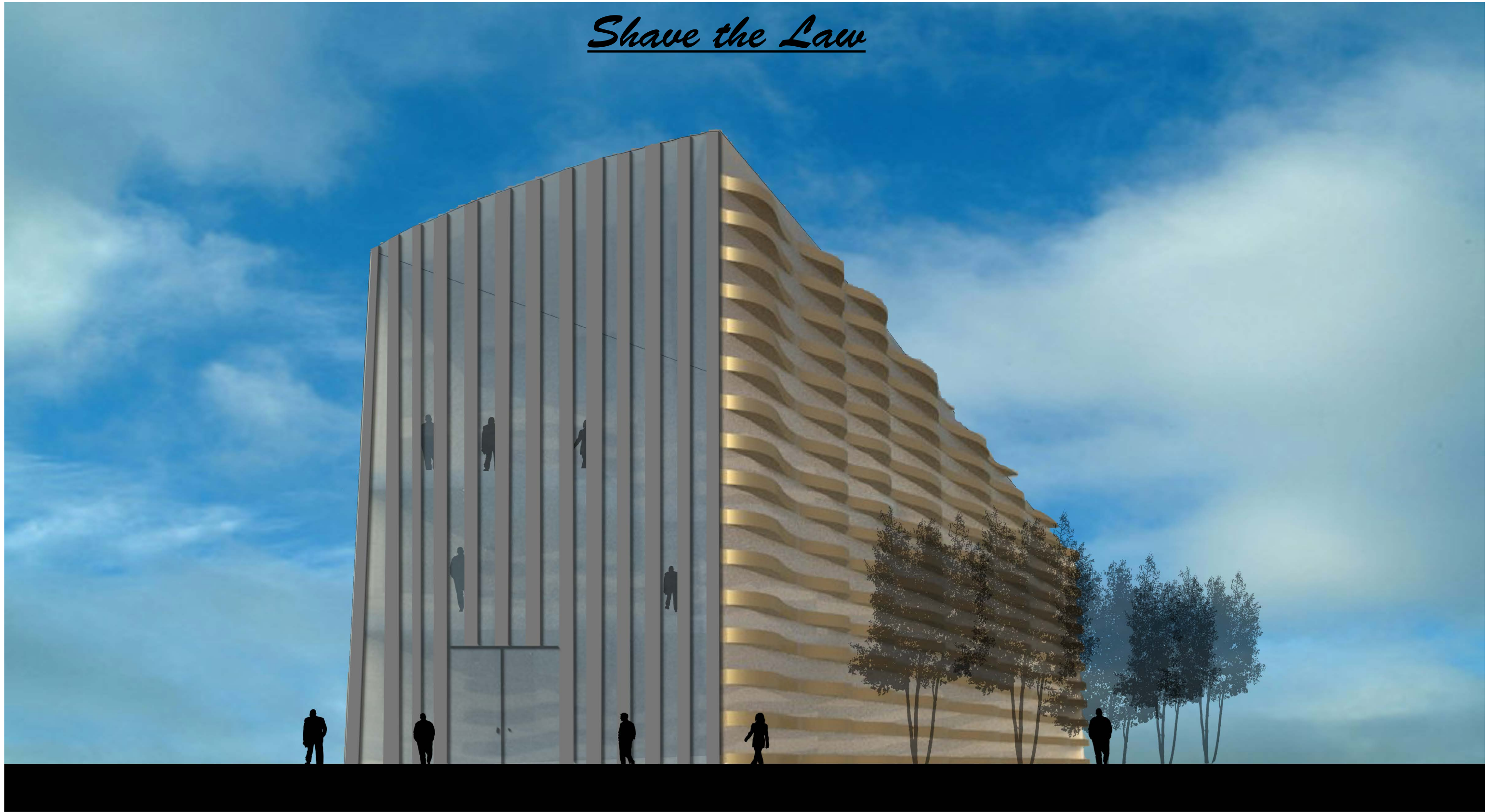


# *Shave the Law*

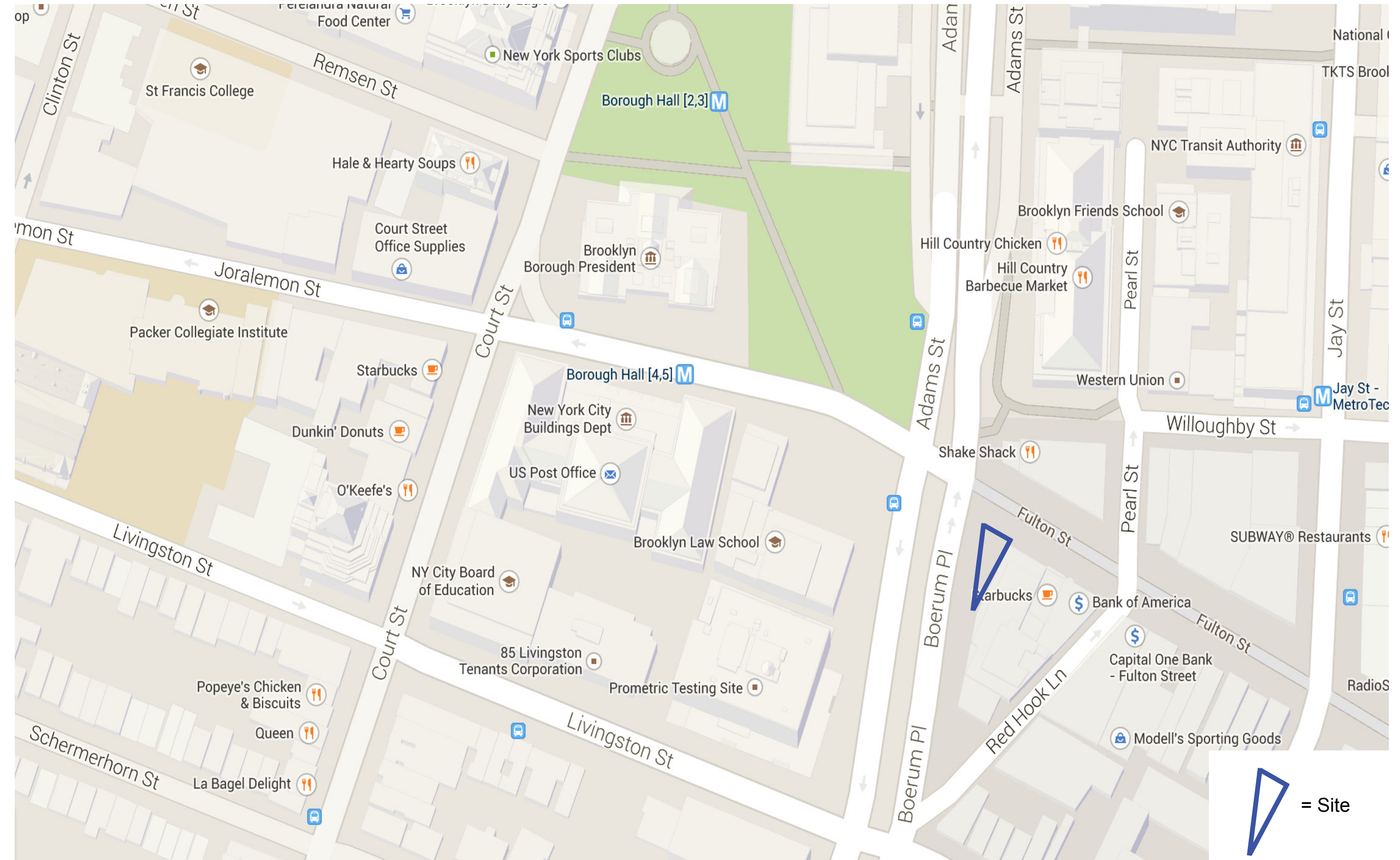
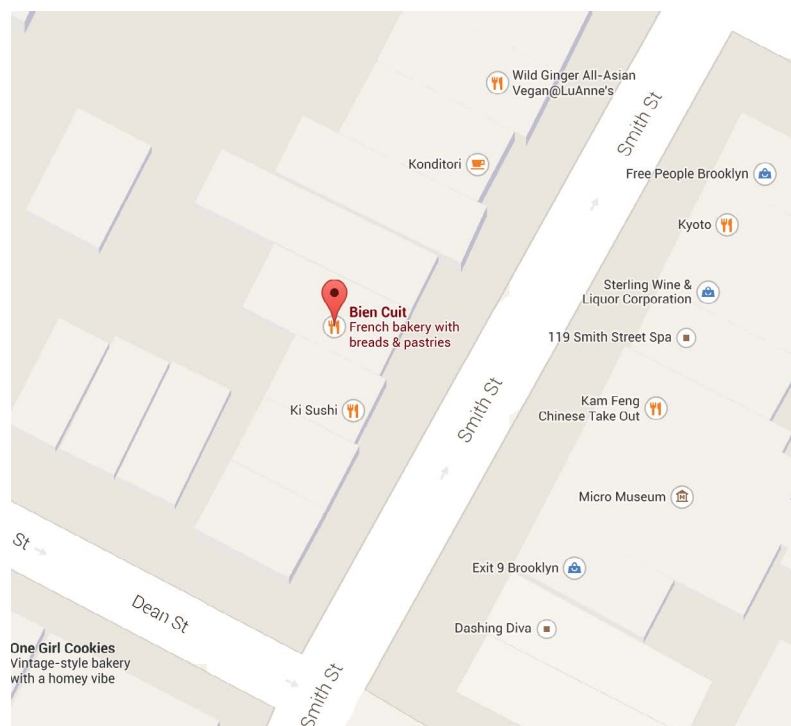
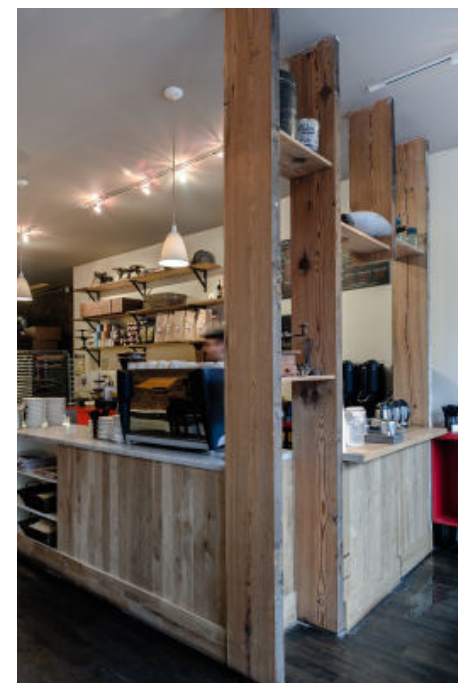


Theocharys Semertzidis  
NYCCT Fall 2014  
Project 2: Commerical

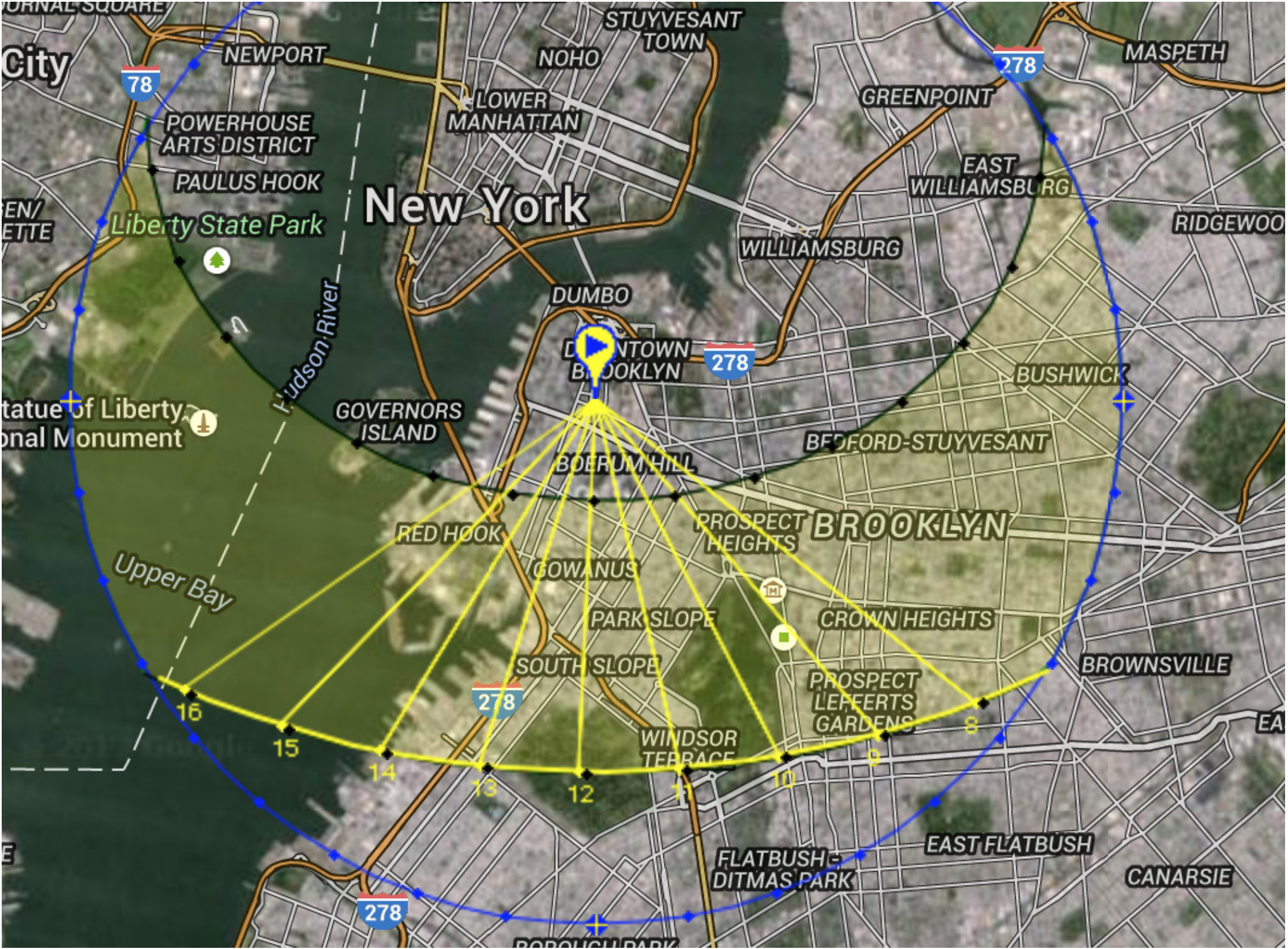
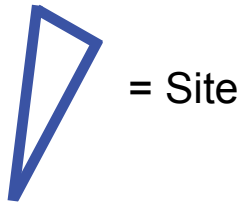
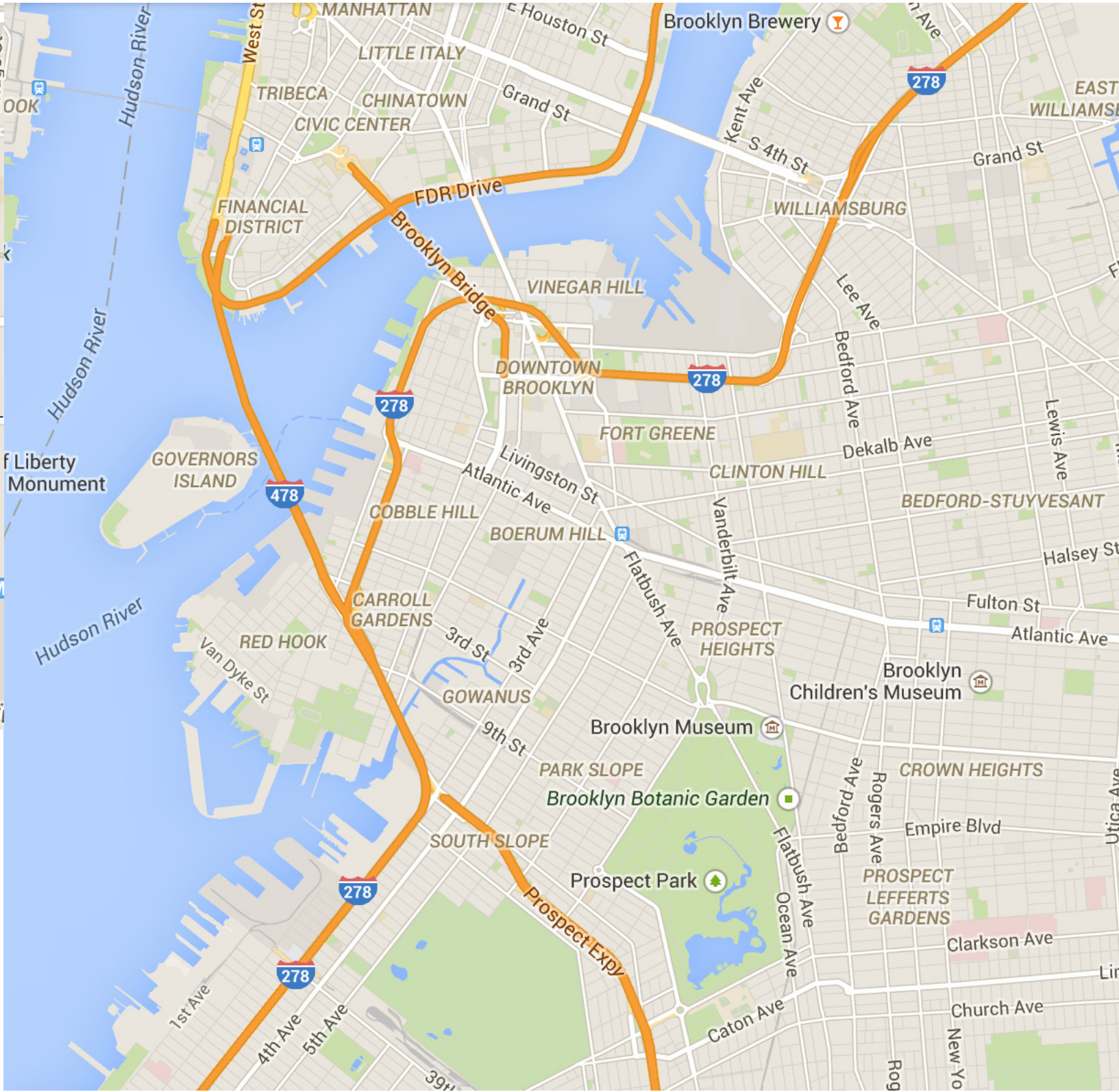
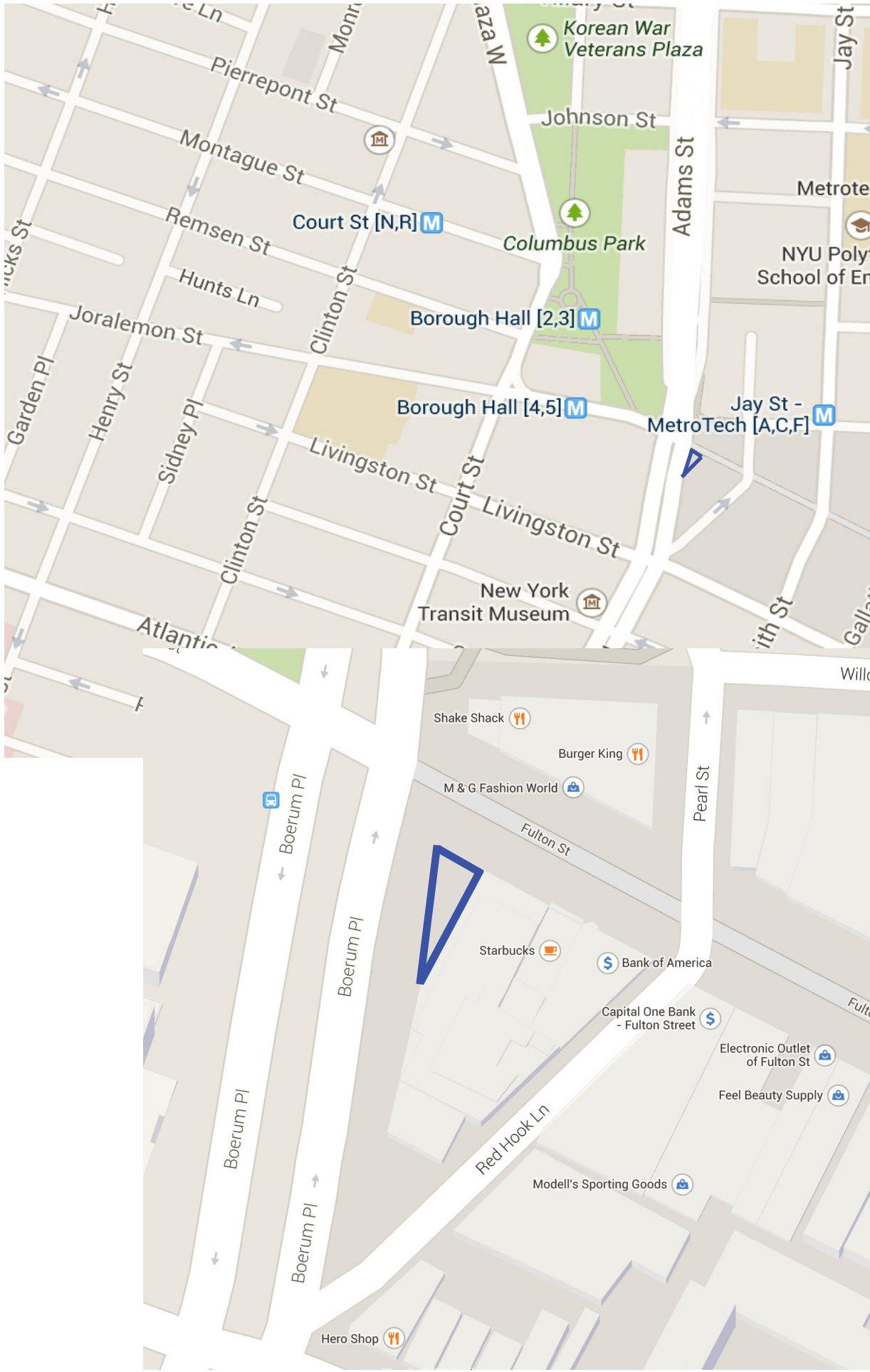


## Bein Cuit:

- 120 Smith Street Brooklyn
- Sells sandwiches, baked goods, and hot beverages.
- Busy area; residential and commercial
- Wood flooring, wood shelving, painted sheetrock walls, chalkboard signs, and brick.
- use glass display cabinets and wooden cabinets.
- layout of tthe store works great, it allows people to flow through the space without disturbing others.
- some space can definitely be smaller which can create more seating for more people.







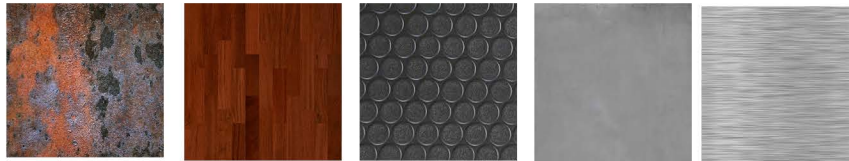
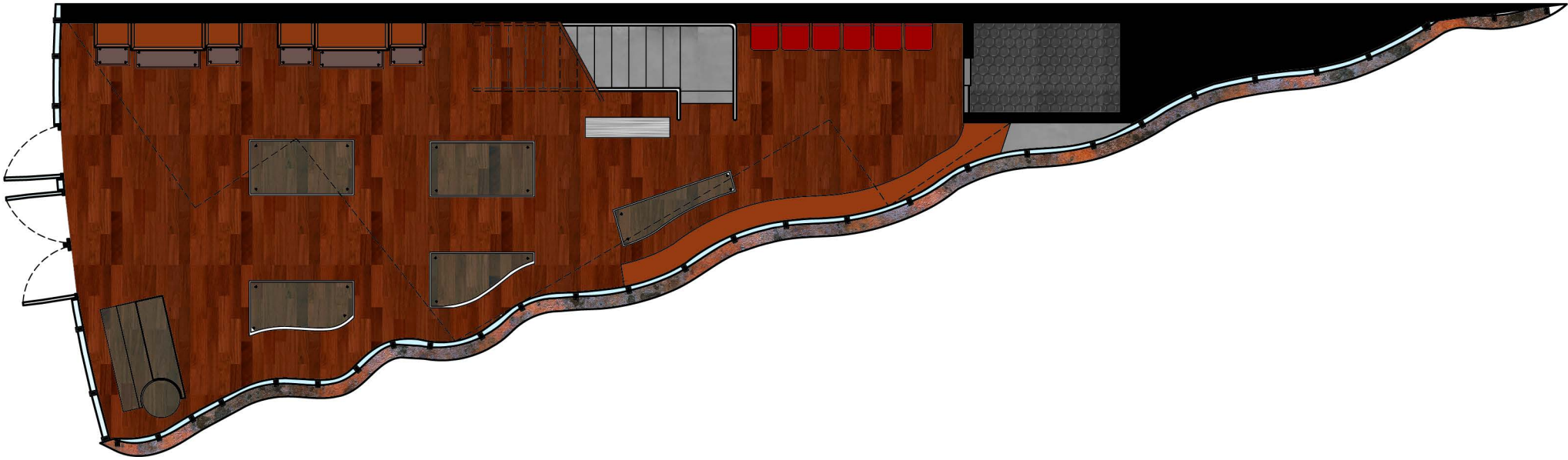
- = Sun Ray
- = Sun Path



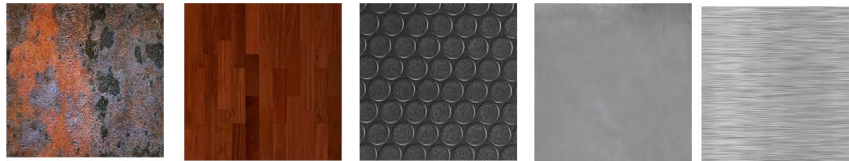
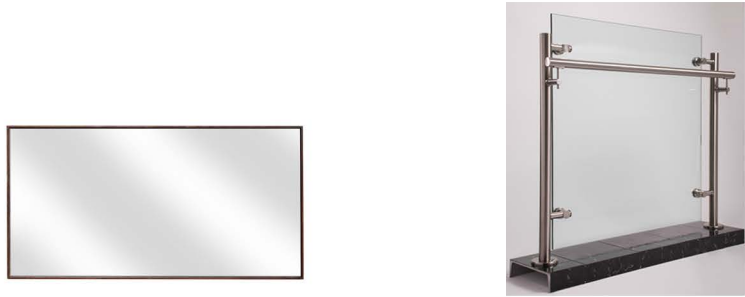
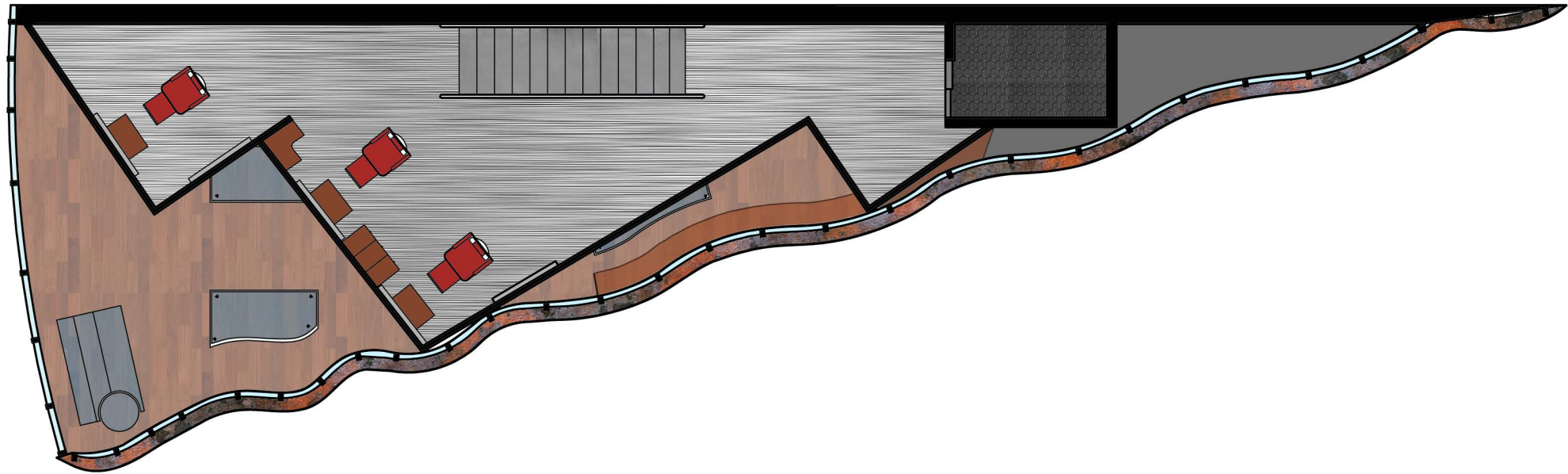




# First Floor

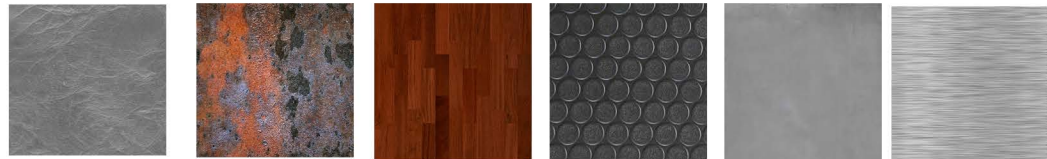
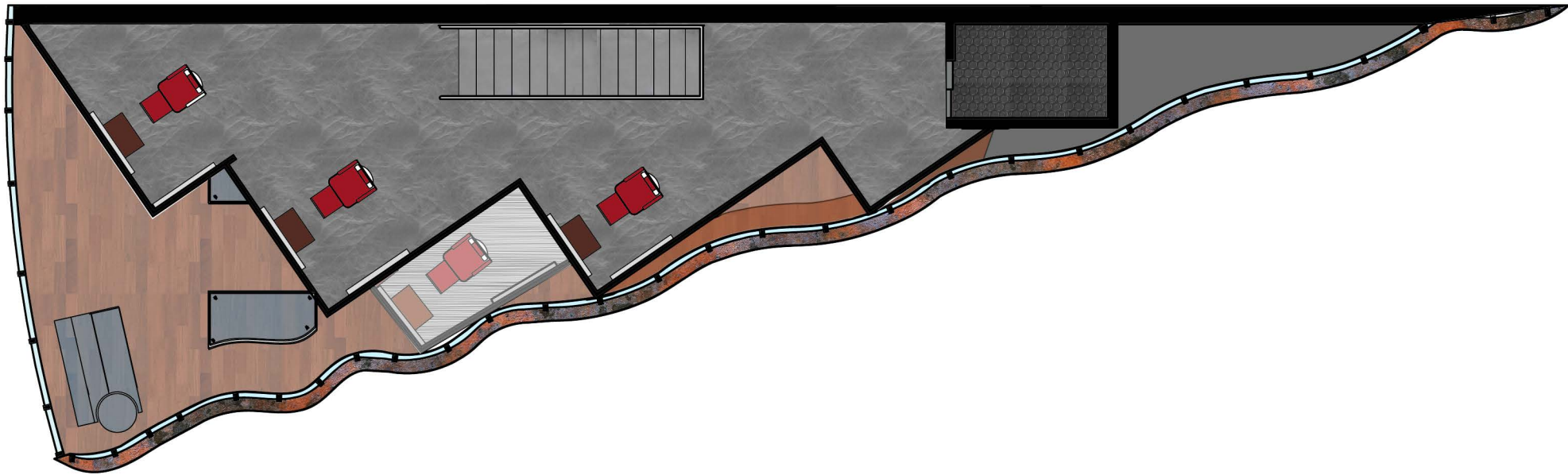


# Second Floor





# Third Floor



# Enlargered ADA Bathroom

