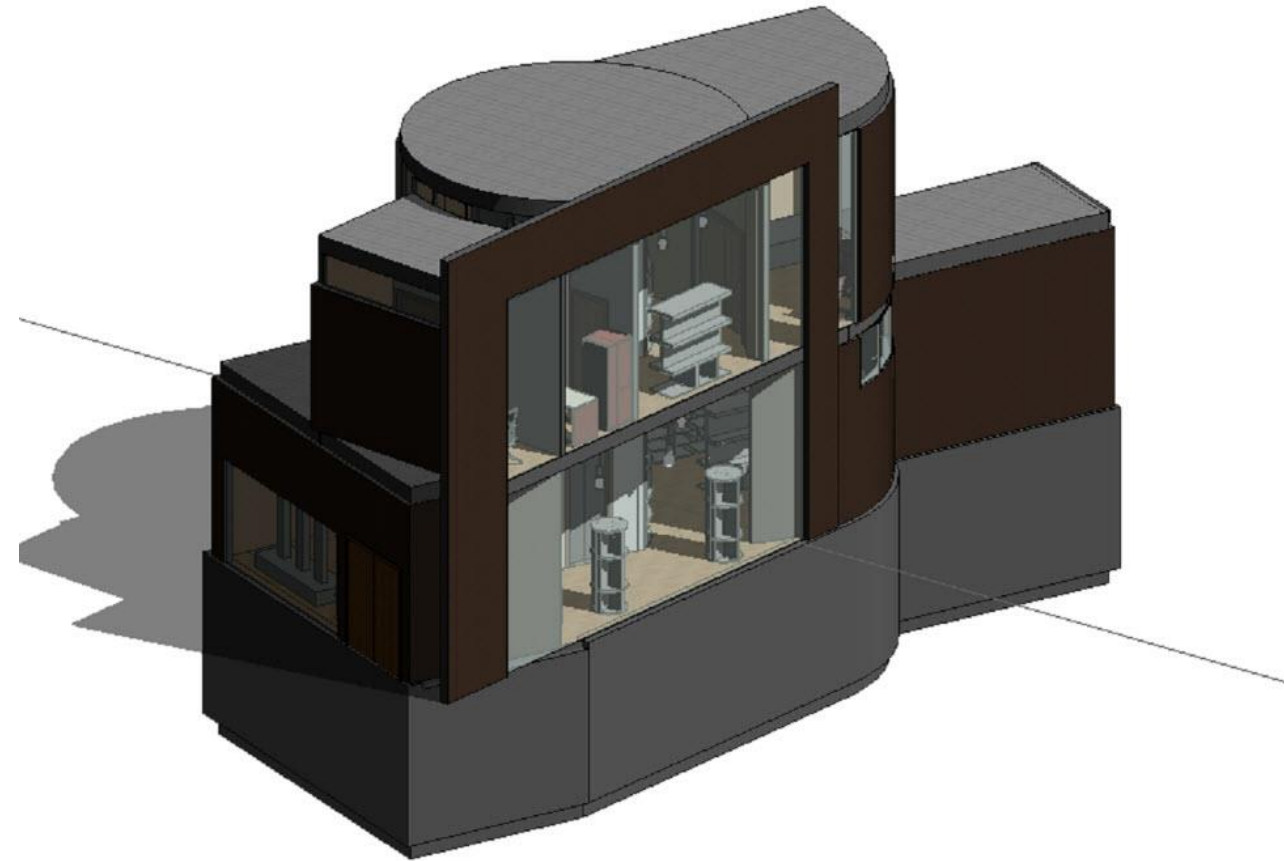
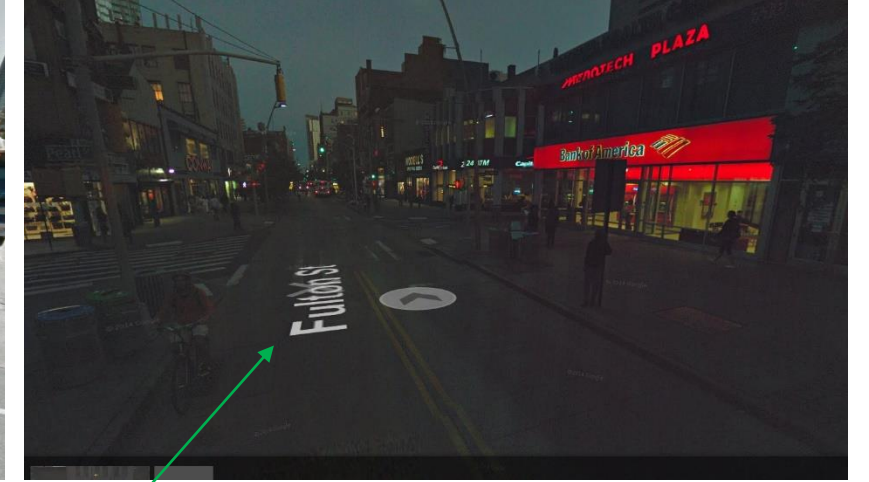


Architectural Design V

Commercial Space Design

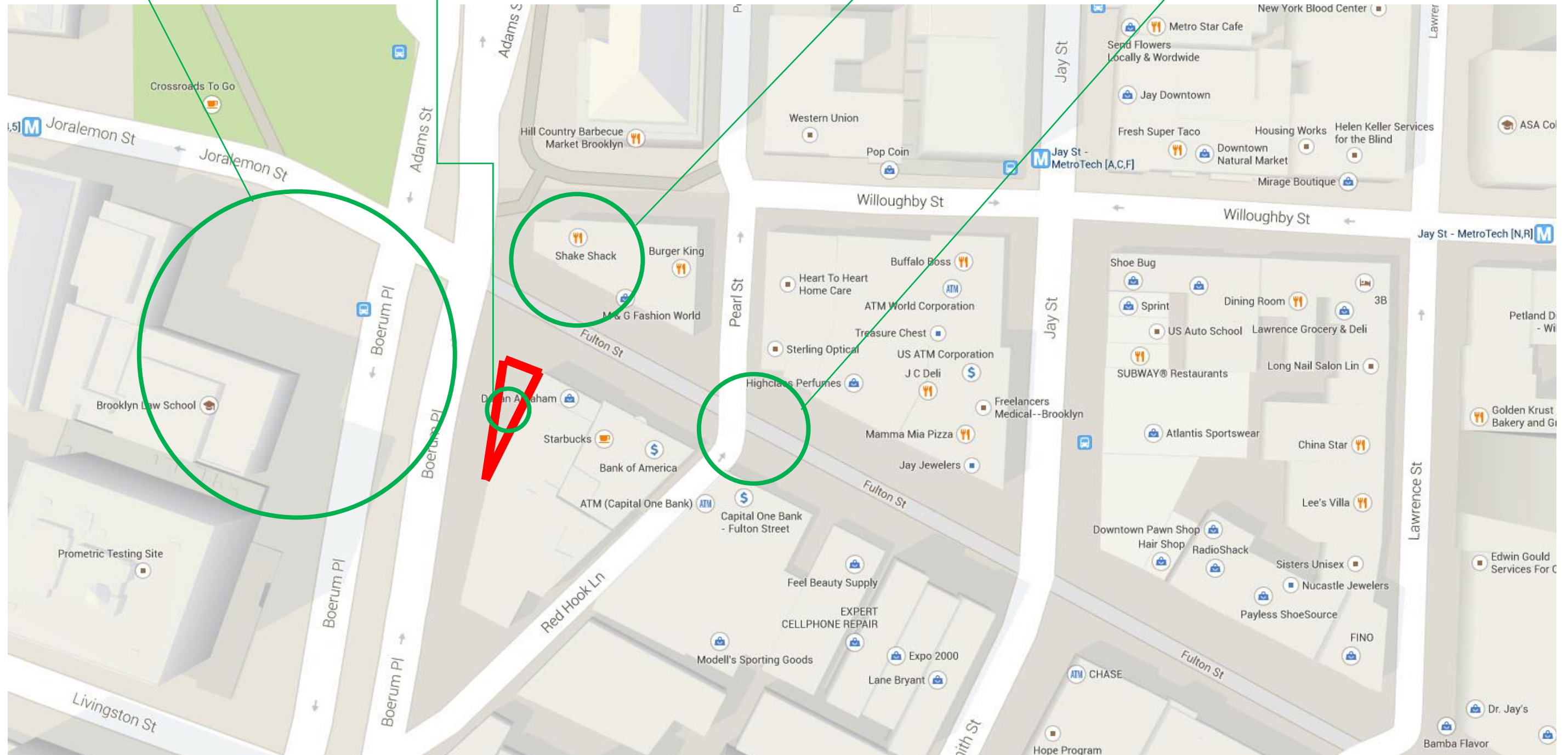


Site Analysis

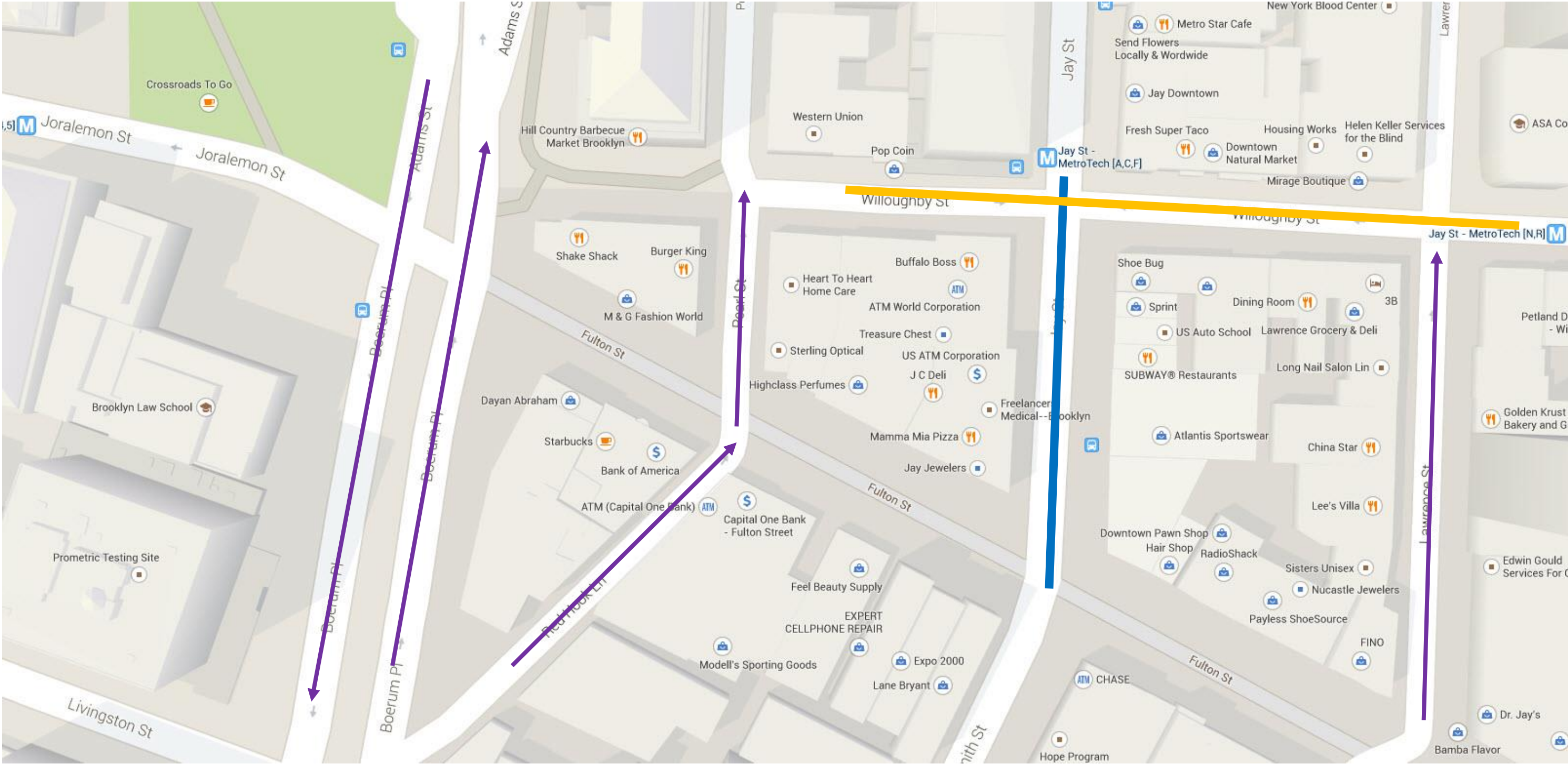


Analysis:
- Street Views of the site and around it.

- Map shows the types of stores within the area.



Circulation and Transportation



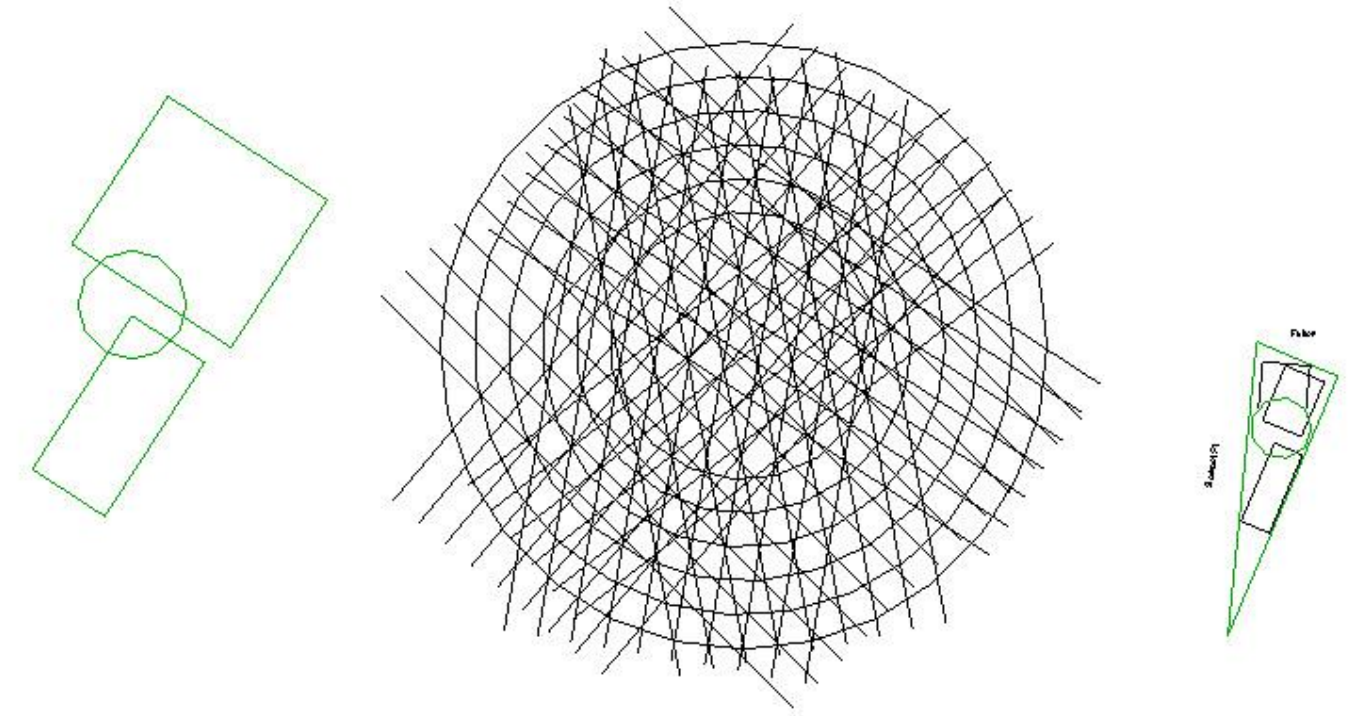
- █ Metro N, R Trains
- █ Metro A, C, F Trains

➔ Traffic Patterns & movement

- Pedestrians, High number of people in the area in general, due to Colleges, and stores. It's a large diverse area that is blooming. Fulton street is usually busy from 7am-8pm, after 8pm it begins to quiet down due to stores closing. Jay street is busy from 7am-10pm based on college students and main transportation for people to get place to place. Boerum Pl is high in traffic been its use for transporting goods, as well away to get across Brooklyn bridge.

Logo & Concept Design Idea

Dolly Dolls Clothing "Where the Runway is Brought to You"



Concept/Idea - Every piece of clothing is unique, buyer wouldn't have to worry about someone wearing the same thing. Tailor is onsite to custom make and fit. Everything is up to date and trending to vintage clothing. Everything to fit your personality. Overlapping intersecting lines that is capturing or focusing on something particular, I used to arrive at the form.

Materials



Glass



Colombian Walnut

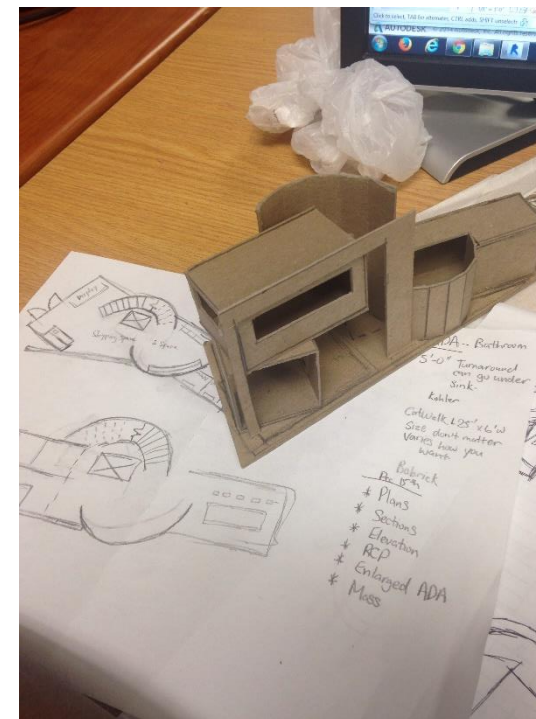


Percaline tile



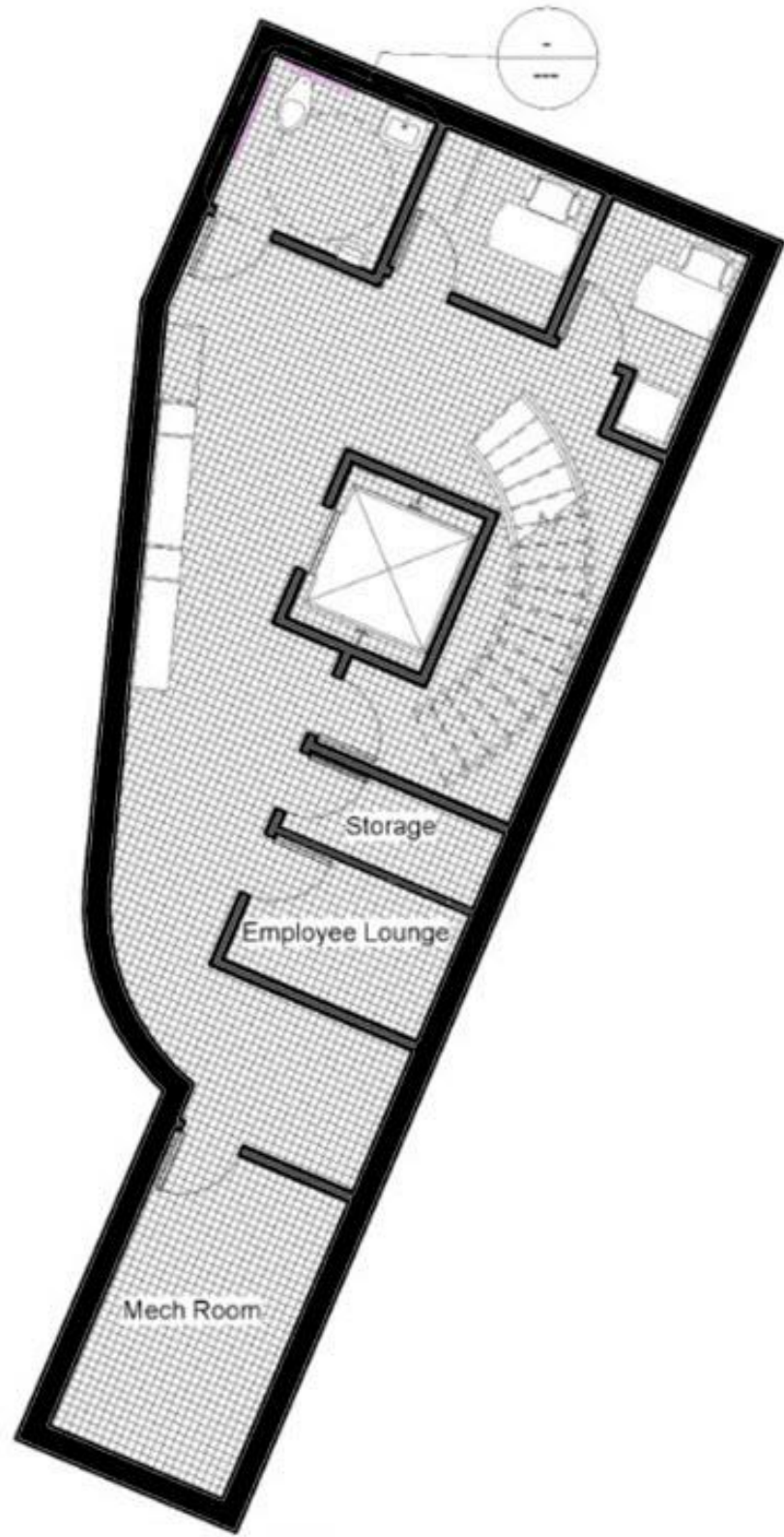
Oak

Study/Final Model

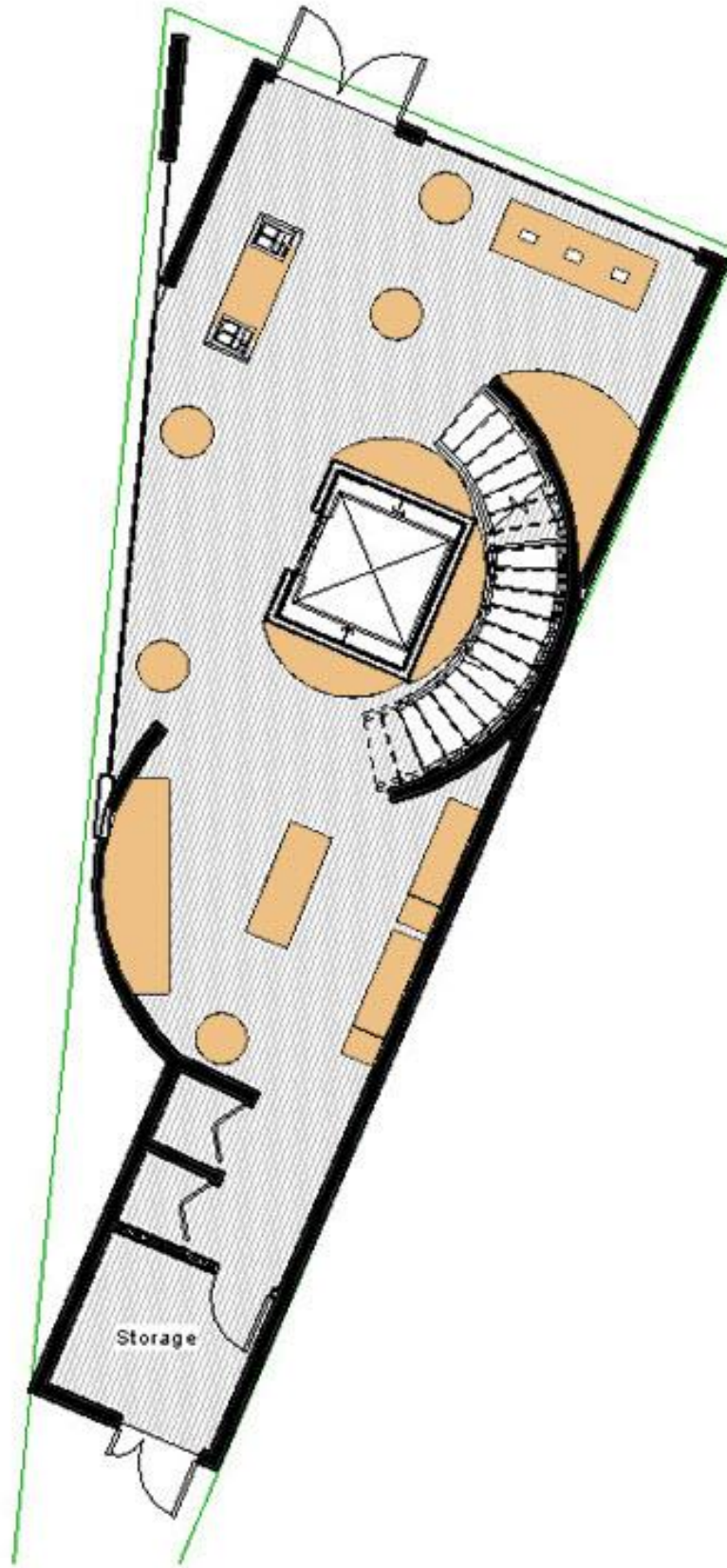


Floor Plans

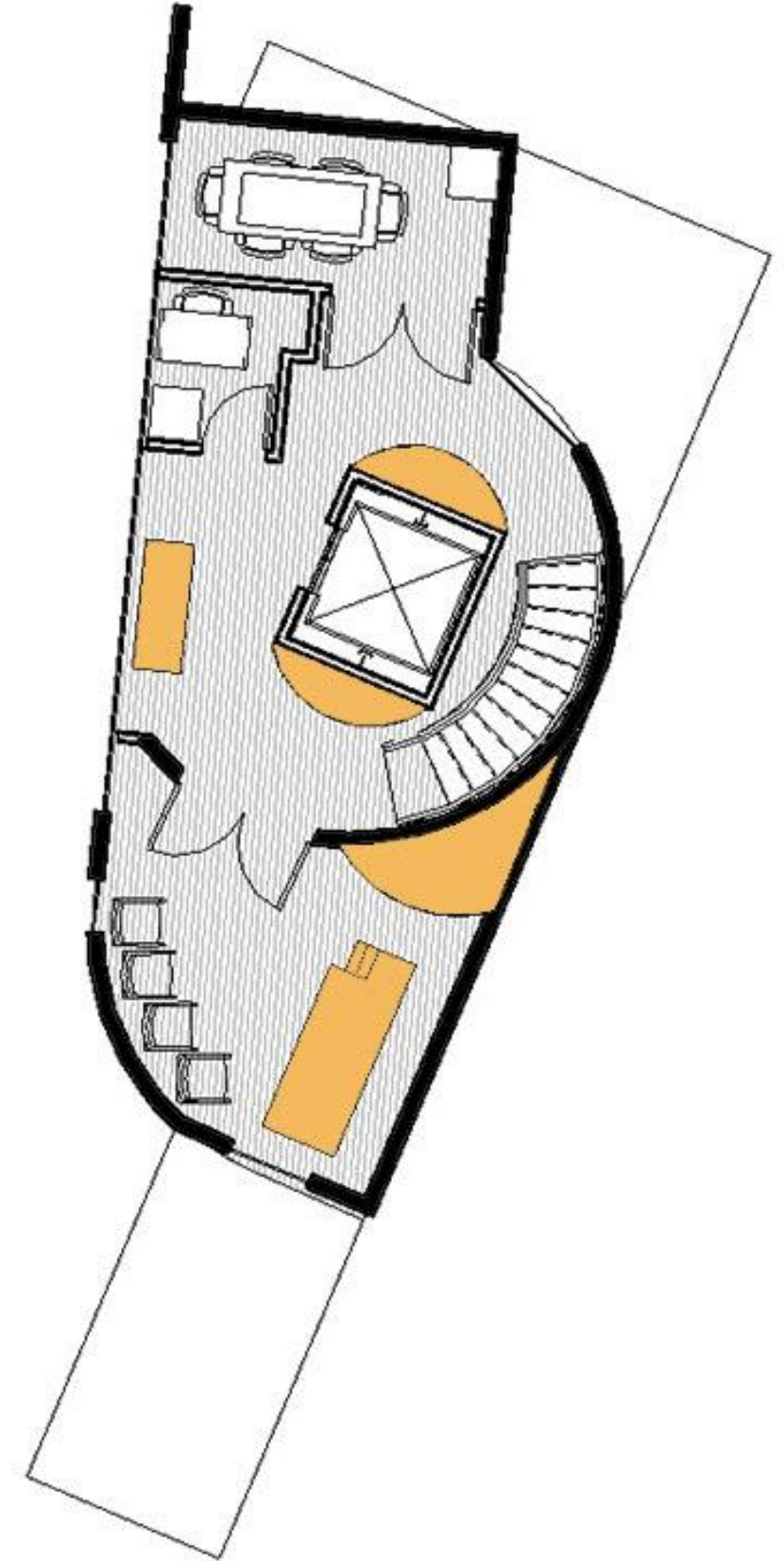
Cellar



1st Floor

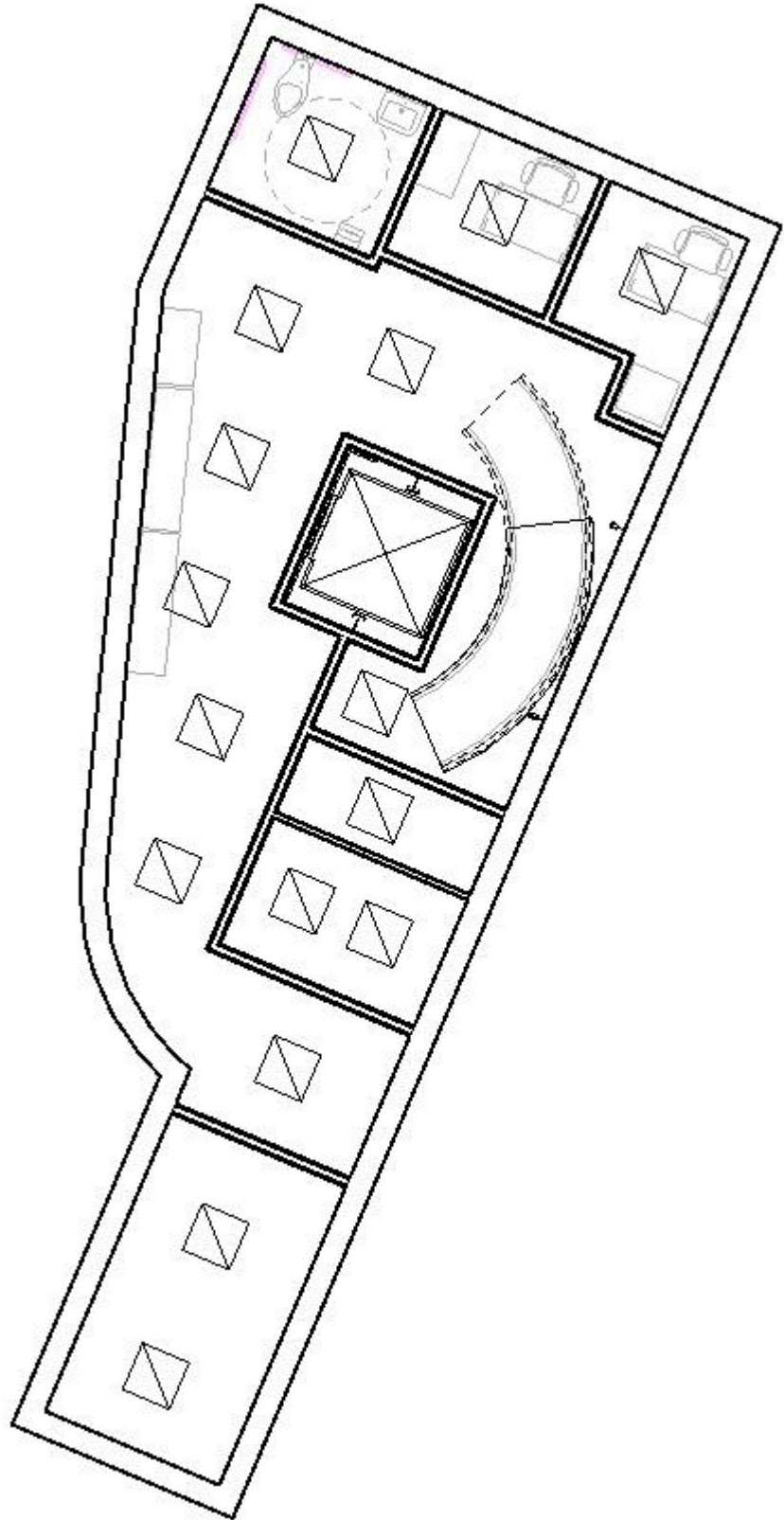


2nd Floor

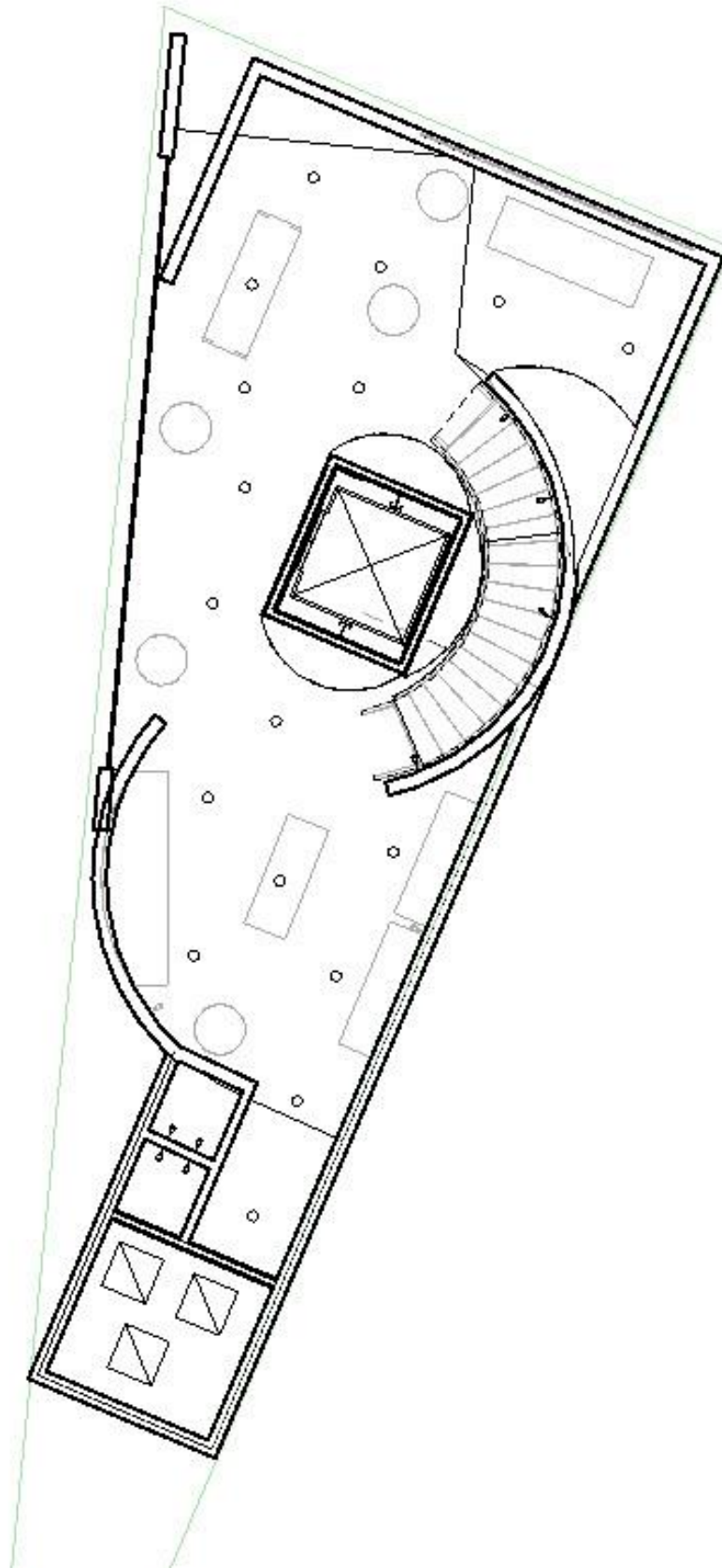


Reflective Ceiling Plans

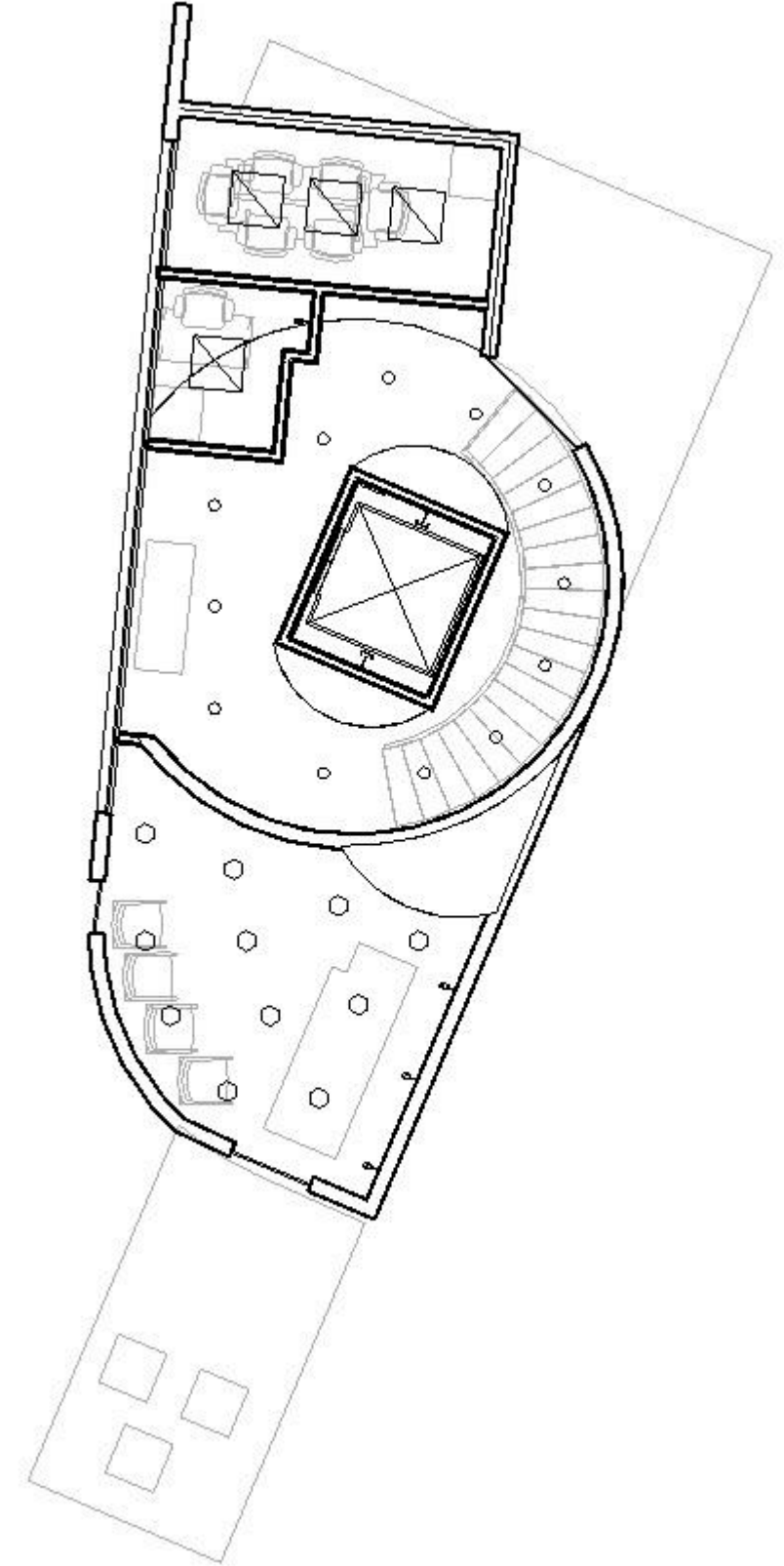
Cellar



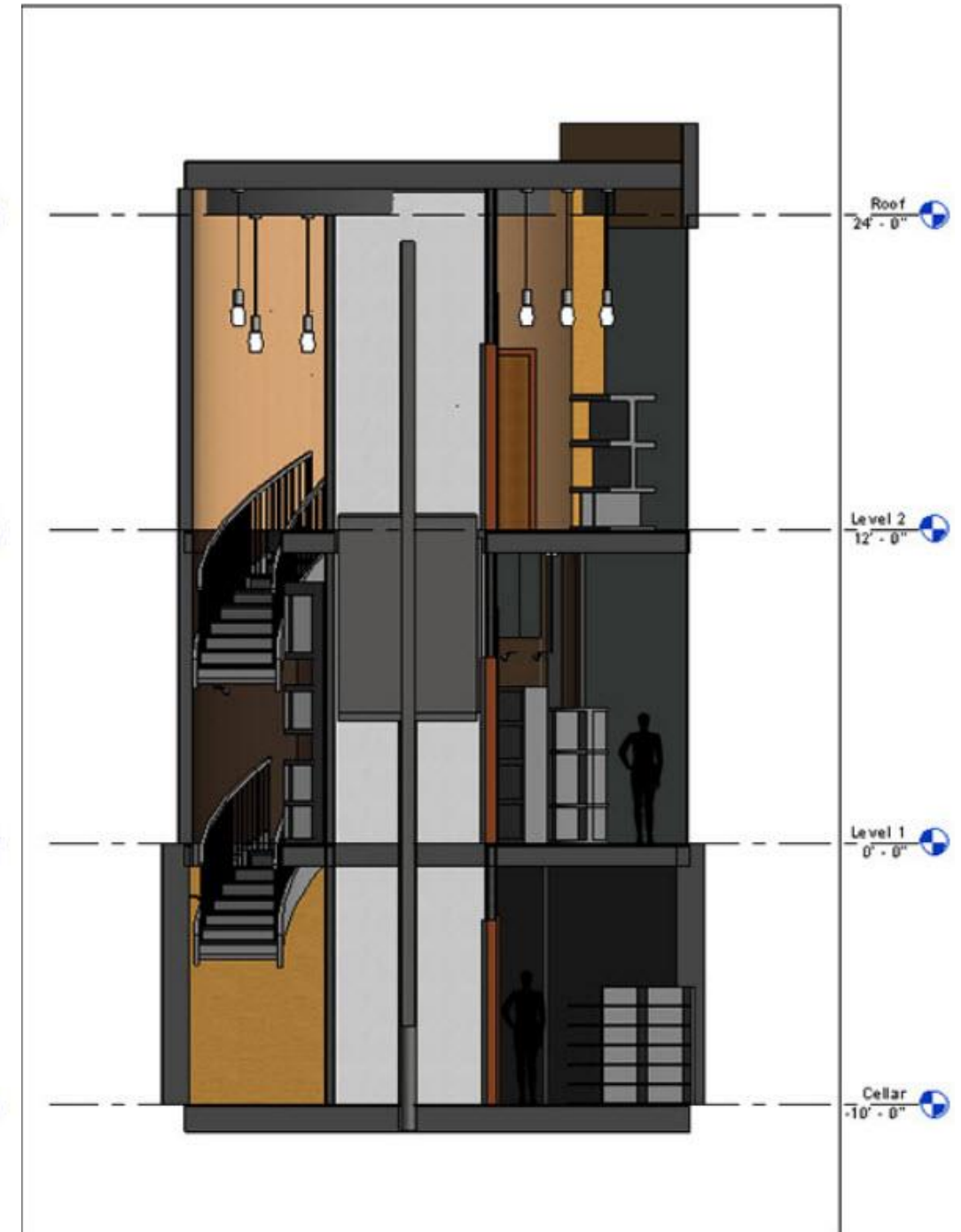
1st Floor



2nd Floor

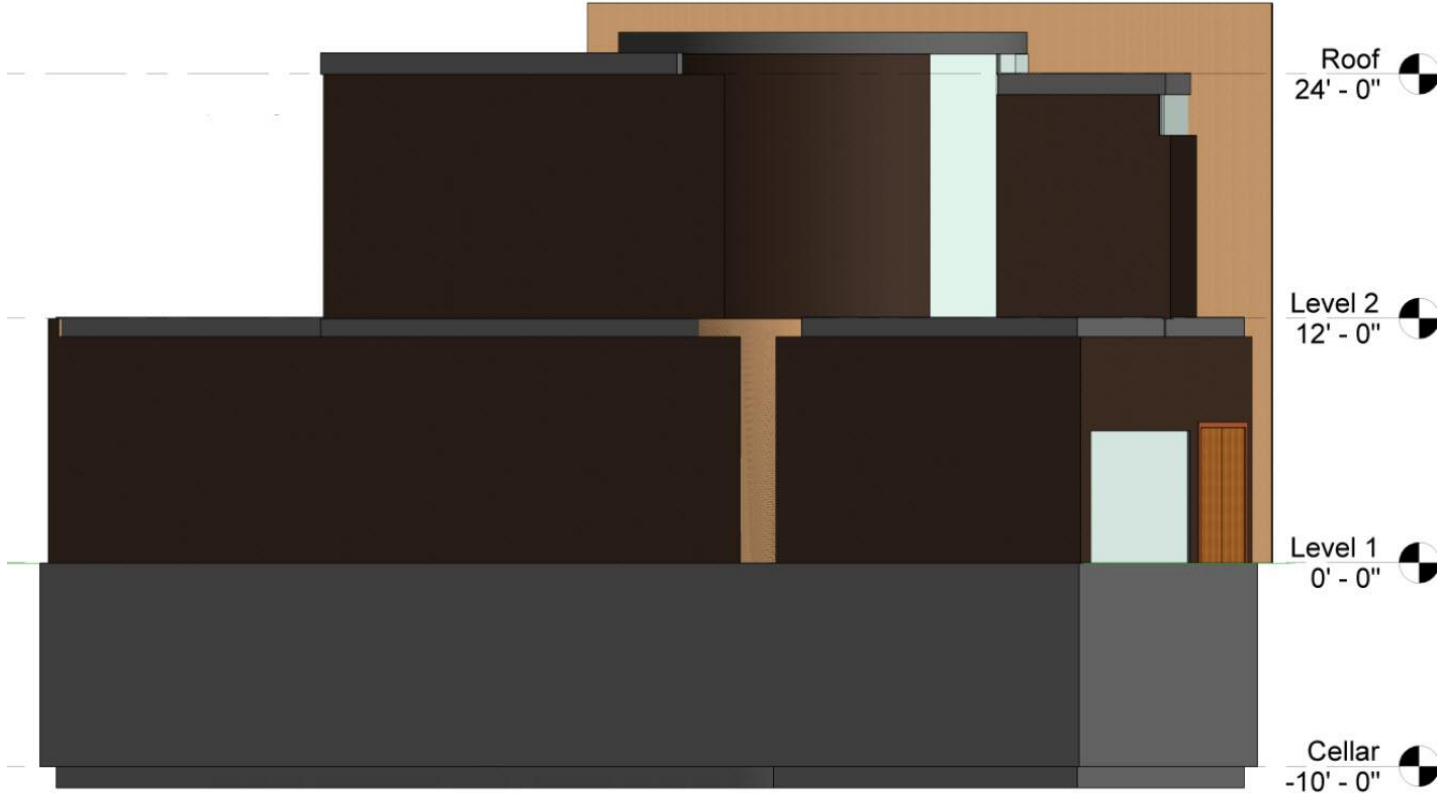


Horizontal & Vertical Sections

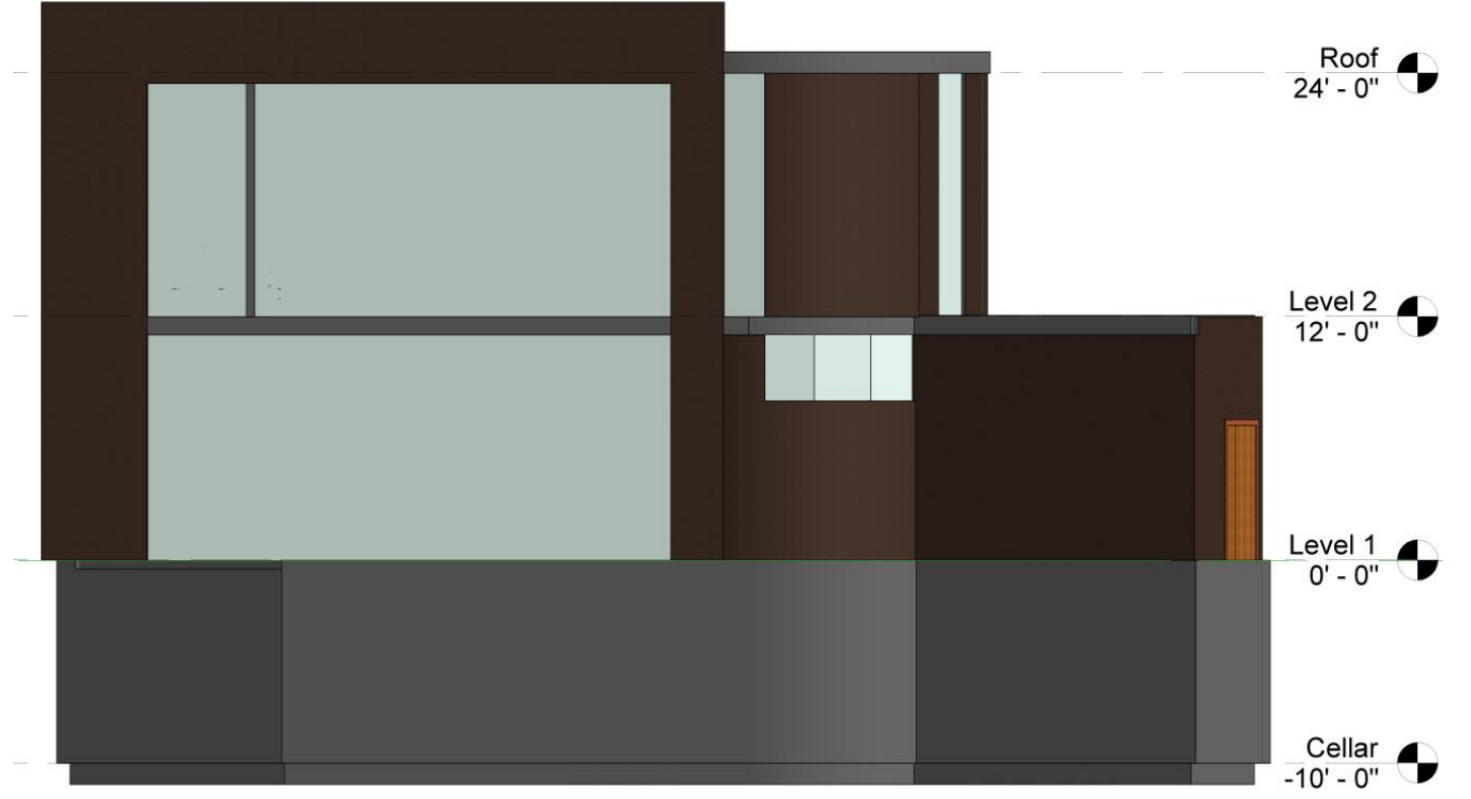


Elevations

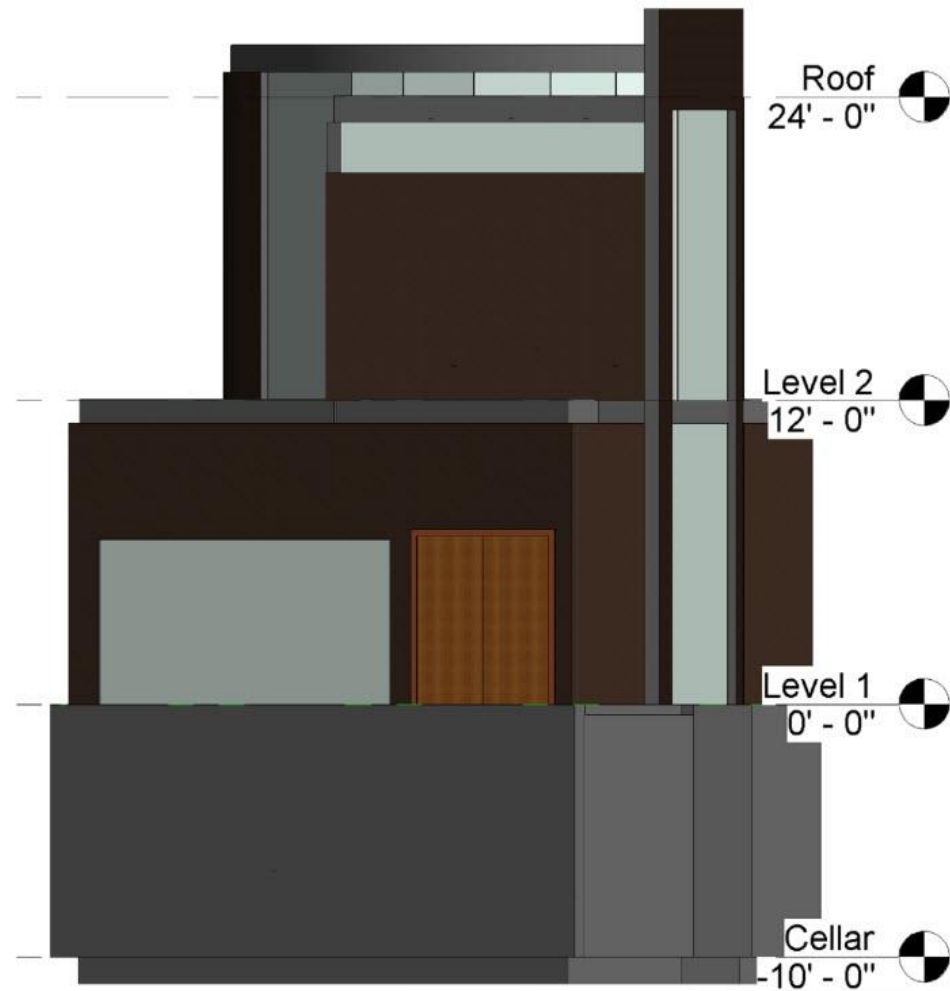
West



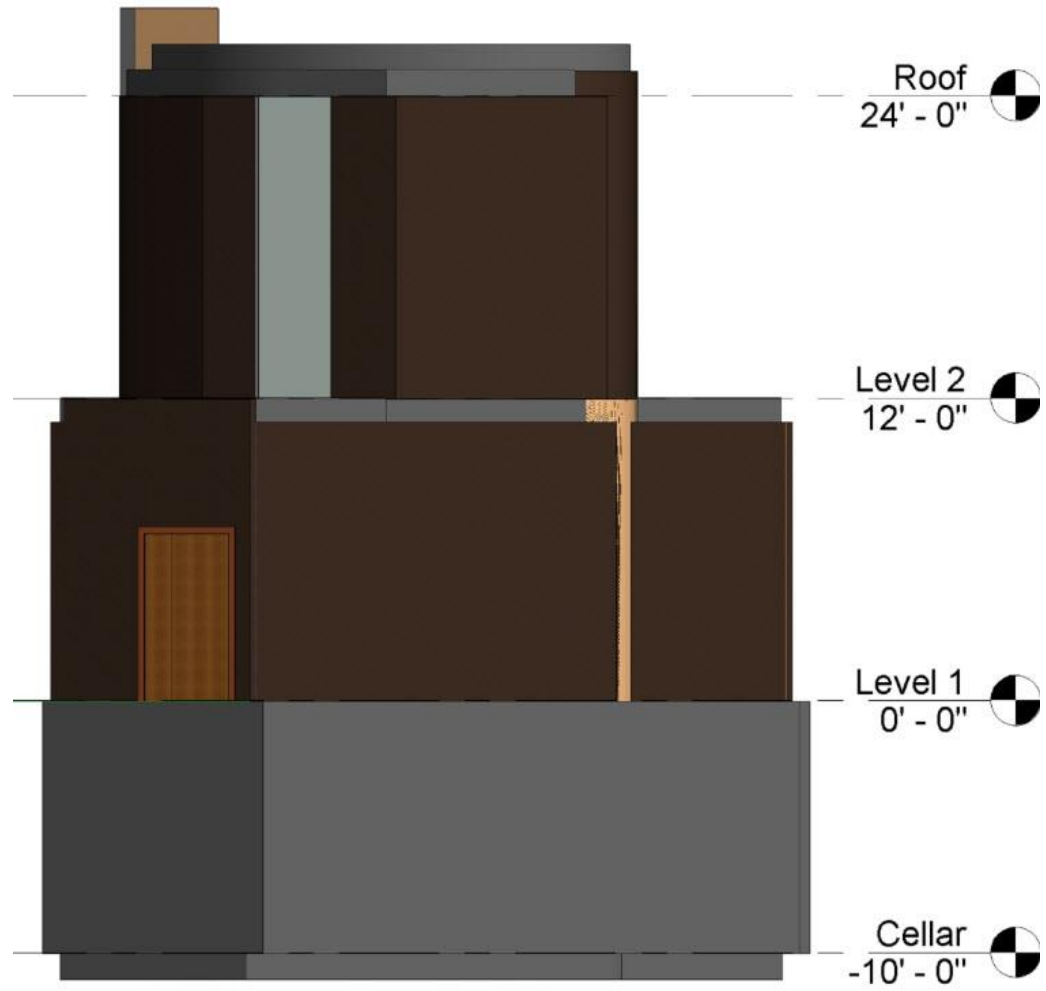
East



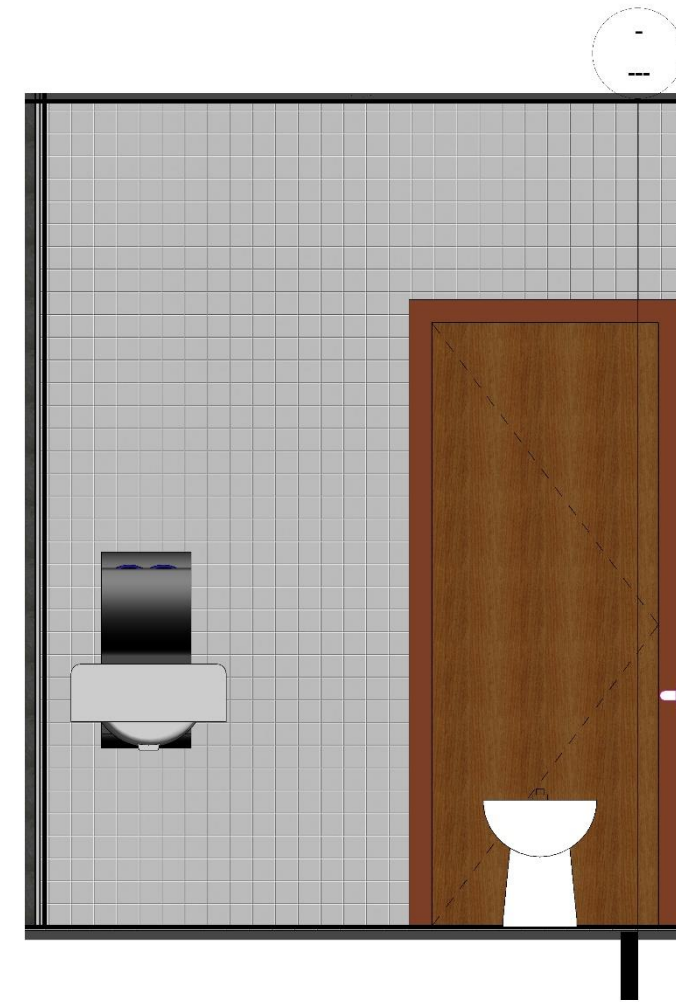
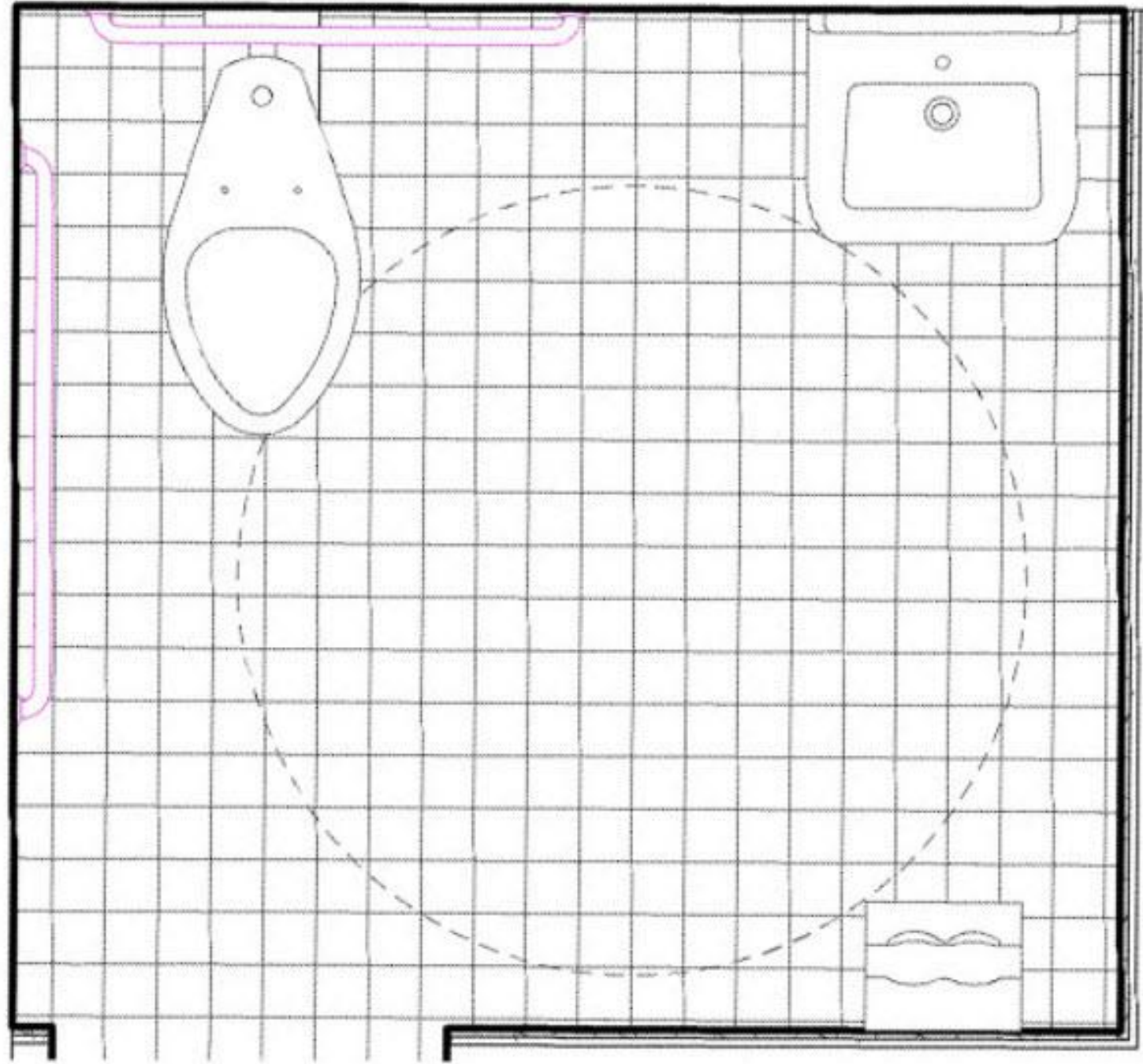
South



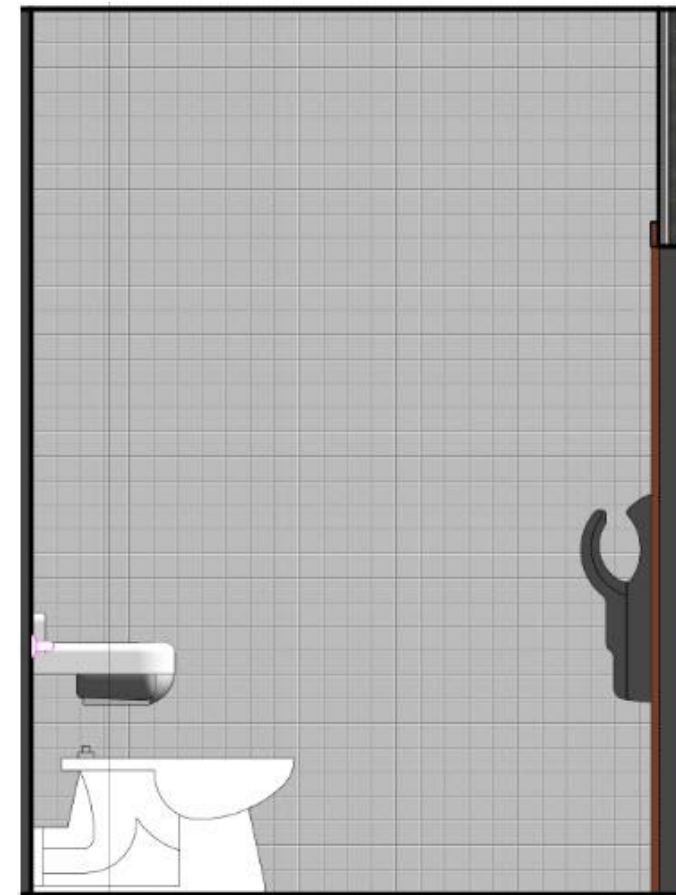
North



ADA Bathroom Detail & Elevations



Cellar
-10' - 0"



Renders

