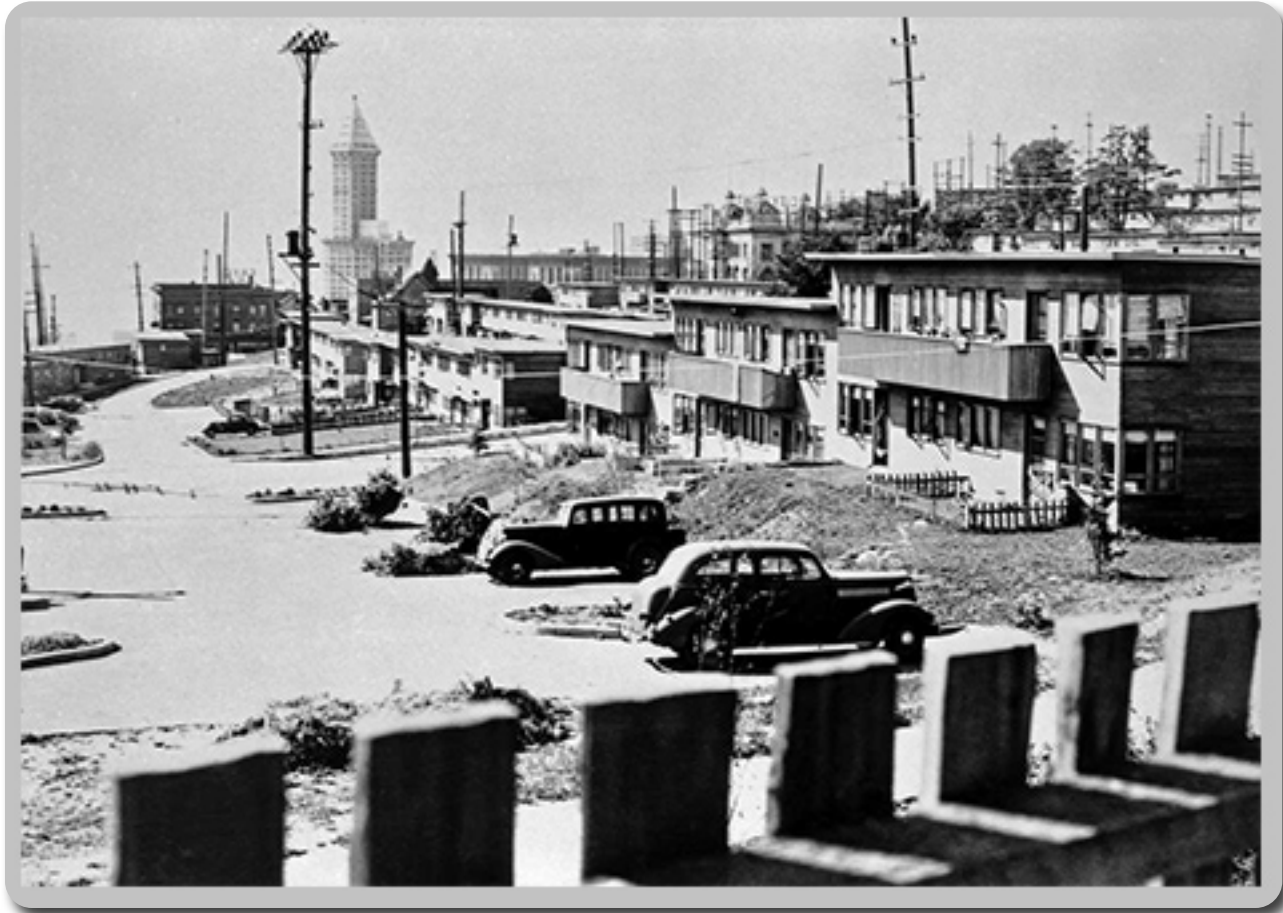


Housing Prior to World War II



Yesler Terrace is Seattle's oldest public housing project. It was revolutionary when it was completed in 1940.

Yesler Terrace apartments rented at \$4.00 to \$4.50 per room per month, including utilities.

In my opinion it was a successful housing program, even though it wasn't perfect, but it was able to provide shelter with utilities for householders at a low price.

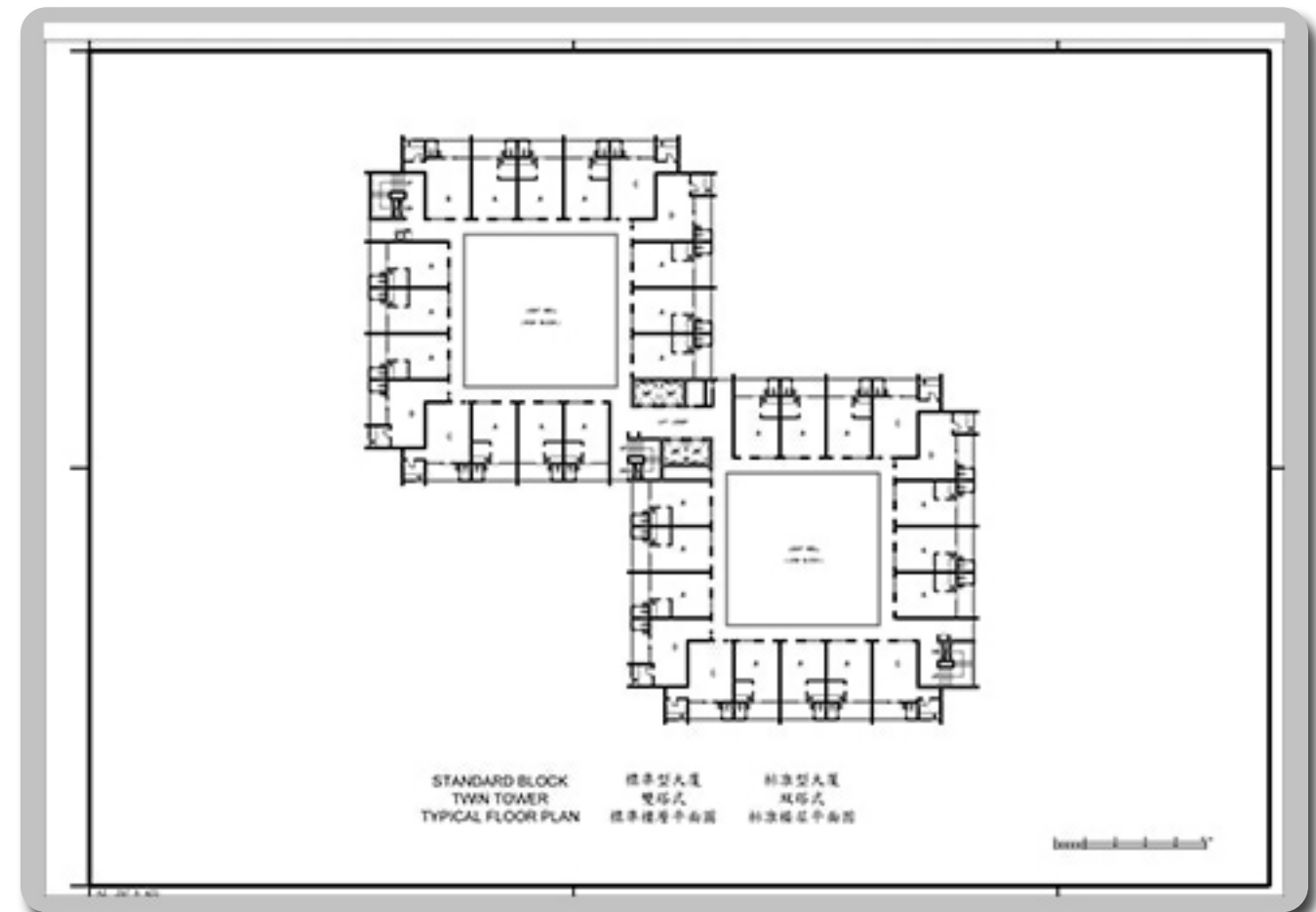


Housing In Asia



Twin Tower is a 1970s' design of residential block of Hong Kong public housing estate. The plan looks like two hollow squares joining one corner of each square. Two towers are of different heights although their shapes are the same. The flat sizes in these 20 to 23-storey towers.

The towers have very small rooms which only have the bathroom space and a very compact kitchen. I feel like the hollow space in the center of the towers could be removed and be used to make the housing space bigger.



Housing in Europe



A council house is a term used in United Kingdom to describe a low to medium density well-built homes at reasonable rents, primarily for working-class people. they are usually but not necessarily terraced or semi-detached housing.

Its a very successful concept that is being used around the world. Most of the time they do share a back yard, wich removes some of the privacy.



Housing Developed in the last 5 years



Lincoln Park is an affordable family housing project located at Lincoln Park, Newark, NJ. Construction of the project began in March 2010 and was completed in August 2011.

Each of the buildings have been designed to achieve LEED standards.

All of the buildings sit on approximately one acre, of what was, mostly vacant Brownfield sites and able to provide 83,779 square feet of residential space.

I think its a very succesful project due to the efficient use of land and achiving a gold awar in LEED.

